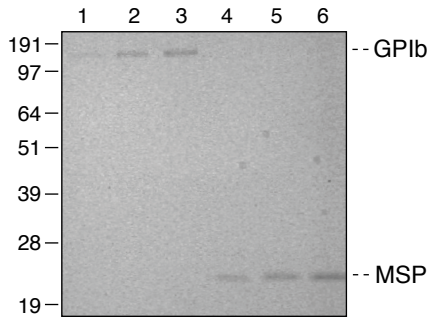
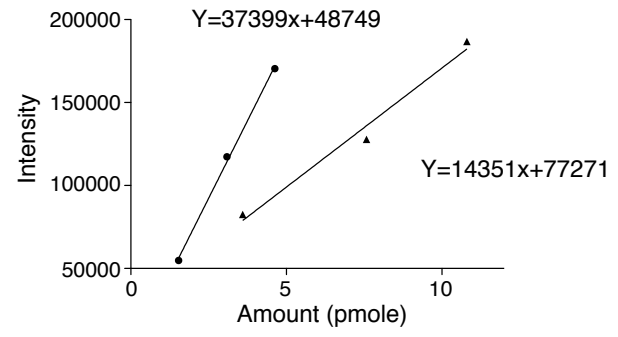


A



B



**Figure S1 Calibration of the difference between Coomassie blue staining efficiency of GPIb and MSP1D1 in SDS gels.**

(A) Various amounts of purified GPIb-IX complex (lane 1: 1.54 pmole; lane 2: 3.09 pmole; lane 3: 4.63 pmole) and MSP1D1 (lane 4: 3.6 pmole; lane 5: 7.58 pmole; lane 6: 10.8 pmole) were resolved in a 10% SDS-gel under non-reducing condition and detected by Coomassie blue staining. Concentrations of GPIb-IX and MSP1D1 stocks were determined as described in *Materials and Methods*. The gel was digitalized on a Bio-Rad Gel Doc 2000 imager. The image was inverted first and band intensities quantified. (B) The standard curves of band intensities (Y) versus the amount (x) of GPIb (●) or MSP1D1 (▲). Each plot was fitted to a linear line; the corresponding equations are shown.