

Supplementary Appendix

This appendix has been provided by the authors to give readers additional information about their work.

Supplement to: Chimowitz MI, Lynn MJ, Derdeyn CP, et al. Stenting versus aggressive medical therapy for intracranial arterial stenosis. *N Engl J Med* 2011;365:993-1003. DOI: 10.1056/NEJMoa1105335.



Online Appendix: Table of Contents

- 1. Administrative Structure and Participants**
- 2. Figure of Patient Enrollment and Follow-up in the Trial**
- 3. Expanded Version of Table 2 in the Manuscript Showing Risk Factor Measures at Baseline, 30 Days, 4 Months and 1 Year**

Appendix. Administrative Structure and Participants

Executive Committee - M Chimowitz, C Derdeyn, D Fiorella, M Lynn, T Turan, B Lane, J Malloy, S Janis (NIH/NINDS member)

*Site Representatives on Steering and Publication Committees** - H Lutsep, S Barnwell, M Waters, B Hoh, M Hourihane, E Levy, A Alexandrov, M Harrigan, D Chiu, R Klucznik, J Clark, C McDougall, M Johnson, L Pride, M Torbey, S Zaidat

Operations Committee - M Chimowitz, M Lynn, T Turan, B Lane, J Malloy, J Montgomery, S Swanson, J Cleveland, A Nizam

Clinical Coordinating Center (CCC) - M Chimowitz, T Turan, B Lane, J Malloy, Department of Neurosciences, Medical University of South Carolina, Charleston, SC.

Statistical Coordinating Center (SCC) - M Lynn, J Montgomery, A Nizam, G Cotsonis, S Swanson, J Cleveland, L Lu. Department of Biostatistics, Emory University, Rollins School of Public Health, Atlanta, GA.

Imaging Center - C Derdeyn, B Vendt, Mallinckdrodt Institute of Radiology, Washington University, St.Louis, MO

Central Neuroradiologists - H Cloft **, Z Rumboldt

Neurology Adjudication Committee - L Caplan, D Anderson, R Hart, R Bernstein

Cardiology Adjudication Committee - T O'Brien, G Hendrix, E Powers, S Chiaramida

Risk Factor Advisory Committee - T Turan, B Egan, M Lopes-Virella, K Hermayer, A Le, O Benavente, C White, M Chimowitz, W. Virgil Brown, B Lane

Interventional Credentialing Committee - C Derdeyn, D Fiorella, S Barnwell, J Dion, P Meyers, P Gobin, S Zaidat, B Lane (non-voting), M Chimowitz (non-voting)

Conflict of Interest Committee - M Williams, C Case, G Lanzino

National Institutes of Health/National Institute of Neurological Disorders and Stroke Liaison – C Moy, W Koroshetz

Safety Monitors - B Stern, G Zoarski

Data and Safety Monitoring Board (DSMB) - J Grotta (Chair), D Hess, M Johnson, J Verter

Research Assistants - J Kandl, M Steiner, A Stufflebean, N Vilardo

Clinical Sites (highest enrolling sites listed first)

Oregon Health Sciences University - S Barnwell, H Lutsep, B Petersen, G Nesbit, W Clark, J Fields, A Har-el, D Larsen, S Enochs, K Feest, B Dugan, S Jamieson

University of Florida - B Hoh, M Waters, B Miller, A Khanna, T Sheehan, L Carlton, R Boyette, N Wilson

State University of New York at Buffalo - E Levy, A Siddiqui, M Hourihane, R Sawyer, C Ionita, M Donovan, A Crumlish, M Hartney

University of Alabama - M Harrigan, A Alexandrov, J Rothrock, I Lopez, D Patterson, L Cava, T Taylor, L Nelson, B Casey, K Albright

The Methodist Hospital Houston - R Klucznik, O Diaz, D Chiu, J Ling, J Volpi, D McCane, L Katz

Barrow Neurological Institute- C McDougall, F Albuquerque, D Fiorella, J Clark, M Flaster, J Frey, G Moguel-Cobos, S Ladha, B Kasel, J Cacciola, S Porter, C Kelly, N Honea, H Jahnke

The University of Texas Southwestern Medical Center at Dallas - L Pride, P Purdy, B Welch, M Johnson, J Lee, R Novakovic, C Hall, K Johnson

Medical College of Wisconsin - O Zaidat, M Torbey, D Book, J Lynch, B Fitzsimmons, A Helms, C Pierzchalski, J Delap, C Miller, E Brandenburg

Riverside Methodist Hospital, Columbus- R Budzik, P Pema, G Eubank, K Johnson, N Sample, M Taylor, W Metz, L Allison, T Campbell, K Tanner, A Garcia, A Bailey

Wayne State University - S Chaturvedi, A Xavier, K Rajamani, C Ranganathan, R Madhavan, F Mada, K Sawaya, L Palm, D Murray, D Vaphiadis

Medical University of South Carolina - A Turk, M Chimowitz, T Turan, I Chaudry, R Turner, R Adams, N Papamitsakis, A Walker, G Starr, E Debenham, J Garry, J Peterson

MultiCare / Tacoma General Hospital - B Kott, J Huddleston, A Nohara, L Lynam, Y Zhu, M Barnhart, C Holsey

Moses Cone Health System - S Deveshwar, P Sethi, C Dohmeier, Y Yan, M Reynolds, K Willis, C Weymann, D Champey, W Hickling, W Harbison, D Parker, A Howard, S Hammonds, A Overton, T Goodpasture, P Henderson, C Martin

State University of New York at Stony Brook - H Woo, D Fiorella, C Perkins, L Donarummo, M Guido, L Krupp, P Coyle, O Gerber, S Fiore, D Madigan, M Baumeister, V Geronimo, D McHugh

Forsyth Medical Center - D Heck, C Chase, A Runheim, H Kraft, J Dodds, D Norwood, Y Whitley, T Browning, M Burdette

West Virginia University - A Rai, C Brooks, C Nance, L Gutmann, P Altemus, J Domico, M Power, T Weimer, R Whitescarver

Cleveland Clinic - P Rasmussen, T Masaryk, R Gupta, I Katzan, K Uchino, J Gebel, M Hussain, M Lu, C Bae, J Provencio, D Andrews-Hinders, T Wheeler, L Strozniak, N Tighe

Henry Ford Medical Center - M Kole, P Mitsias, A Katramados, A Russman, B Silver, N Sripathi, J Jones

Florida Hospital, Orlando - F Hellinger, D Honeycutt, L Bilanovic, B Brutsch, K Beaudry

University of Pittsburgh - T Jovin, V Reddy, L Weschler, B Jankowitz, S Zaidi, M Horowitz, R Lin, M Hammer, M Jumaa, S DeCesare, D Crowley-Lisowski, A Adams, J Oakley, J Billigen

St. Luke's Episcopal Hospital, Houston - M Mawad, H Morsi, E Bershada, J Suarez, G Lopez, S Moore, M Pierce, G DeFreitas

Columbia University Medical Center - P Meyers, M Elkind, J Willey, J Roberts, T Corporan

University of Mississippi Medical Center - R Buciu, H Uschmann, R Leacock, E Brumfield, M Bankston

Emory University - F Tong, F Nahab, J Dion, C Cawley, M Frankel, R Gupta, R Noguera, A Webb, L Ayala, K Hanson, E Holland

University of Miami - D Yavagal, J Romano, M Aziz-Sultan, M Katsnelson, S Koch, I Bustillo, M Lichtenberger

Weill Medical College of Cornell University - Y Gobin, D Leifer, H Riina, M Fink, D Jamieson, A Segal, H White, J Caronna, B Nikolov, K Salvaggio, M Velcheva, M Ogg

Rush University Medical Center - D Lopes, S Prabhakaran, V Lee, M Shanks, M Catalano, G Griffin, T Cole, C Woods

University of Pennsylvania - R Hurst, S Kasner, J Weigele, B Cucchiara, S Messe, N Shafi, M Mullen, D Rose, I Rybinnik, L Sansing, M McGarvey, E Augelli, M DeSanto, N Gallatti, L Ventura, J Luciano

University of Cincinnati - T Abruzzo, A Ringer, P Khatri, D Kanter, M Flaherty, S Kempisty, K Sullivan, C Moore, L Sprafka, C Koenig, B Reinert

Central DuPage Hospital - H Shownkeen, A Mazumdar, H Echiverri, R Bajwa, K Dzamashvelli, R Sucholeiki, J Smith, S Lidtke, P Pastore

Case Western Reserve University - R Tarr, J Sunshine, C Sila, E Westbrook, M DeGeorgia, S Pundik, S Sundararajan, A Furlan, D Korosec, D Diorio

Cedars Sinai Medical Center - M Alexander, D Palestrant, P Lyden, C Miller, R Singh, C Serrano, E Ferguson, F Lin, P Kornbluth, T Zorge

Duke University Medical Center- T Smith, C Graffagnino, V Chilukuri, J Stoner, D Bombard

Erlanger Medical Center- B Baxter, D Rankine, T Devlin, D Jones, J Sparks, D Gaddis

Baylor Medical Center, Dallas - I Thacker, J Hise, D Graybeal, R Choudry, A Okai, E Broyles, M Johnson, R Smith, M Sams

Sacred Heart Medical Center - C Zylak, M Geraghty, T Powell, W Bender, E Rawner, R Franks, B Aaron, T Cantrell

Thomas Jefferson University - R Rosenwasser, P Jabbour, C Pineda, R Bell, D Brock, D August, E Simons, A Salvatore, M Wakefield, M Sheridan, K Salgado

Scott & White Memorial Hospital - W Lesley, R Lenehan, J Clark, R Wardlow, B Wulbrecht, M Carney, S Taggart

Glendale Adventist Medical Center - G Rappard, D Thompson, L Lee, C Galicia, J Cann, I Zoltzman, A Ghosalkar

Providence Medical Center, Southfield, MI - R Fessler, J Mick, B Kole, B Silverman, P Cullis, M Holtzman, N Warra, Y, Will- Murphy, M Silverman, K Telck, V Gordon, J Kelly, M Lahey, N Zakem, C Rieck

Carolinas Medical Center - J Bernard, S Dibert, J Story, J Martin, M Price

Sentara Medical Center - J Agola, R Zweifler, J Rathbun, S Cummings

Massachusetts General Hospital - J Pryor, S Silverman, R Nogueira, F Buoanno, M Ning, A Singhal, N Rost, B Rista, A Chutinet

Inova Fairfax Medical Center - R Pergolizzi, C Putman, J Cochran, R Lipsky, R Benson, J Rosecan, M Greenberg, K John, C Restak, M Khalil, B Wyllie

University of California San Francisco - R Higashida, M Nguyen- Huynh, J Tatum, S Poisson, J Scanlon, C Yancey, S Stason

Good Samaritan Hospital, San Jose - R Malek, H Sachdev, N Sacchdev, M Emami, U Kelly-Tolley

Mayo Clinic Arizona - B Chong, B Demaerschalk, M Aguilar, D Dodick, T Ingall, B Vargas, K Noe, J Sirven, J Drazkowski, E Boyd, J Wieser

Johns Hopkins University - P Gailloud, R Wityk, P Nyquist, B Kohler, A Jones

Washington University, St Louis - C Moran, C Derdeyn, D Cross, D Carpenter, A Ford, J Lee, A Zazulia, N Hantler, J Newgent, J Rickmann, J Serna, L Carpenter

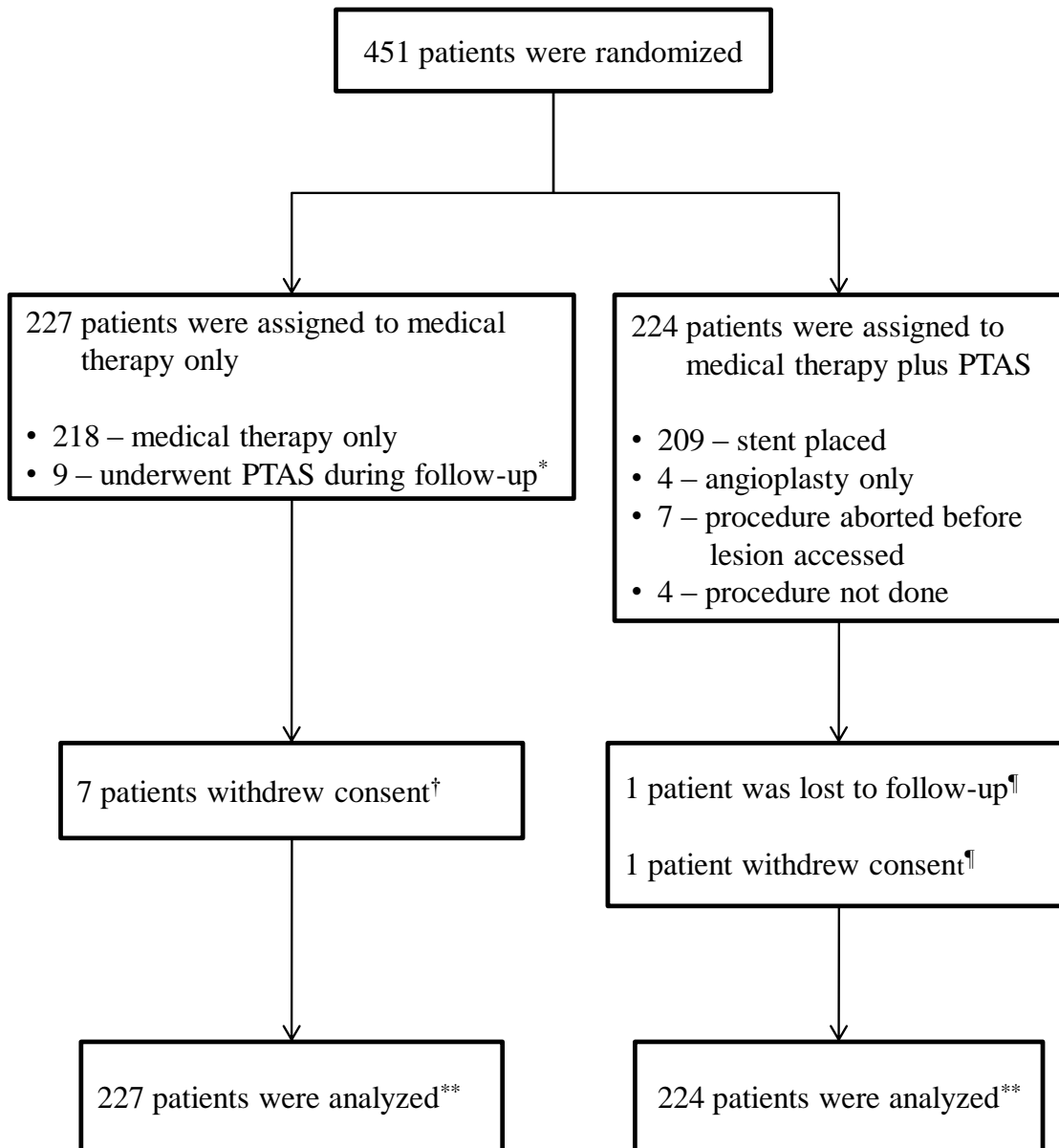
Washington Hospital, Washington, DC - W Bank, A Liu, A Hsia, M Lin, M Schlosberg, J Martin, M Cota, I Fleming

* neurologists and interventionists from the top 8 enrolling sites

** On Steering and Publication Committees

SAMMPRIS

Patient Enrollment and Follow-up



* Days after enrollment when PTAS done: 4, 28, 68, 79, 98, 117, 198, 250, 429

† Medical Therapy Only : Days after enrollment when withdrawn: 2, 3, 3, 30, 86, 121, 231

¶ PTAS: Days after enrollment when lost or withdrawn: 236, 279

** For the time to event analyses, patients who withdrew consent or were lost to follow-up were censored at the last contact date.

Table 2. Risk Factor Measures at Baseline and During follow-up

Variable	Medical Group (N=227)				PTAS Group (N=224)			
	Baseline	30 Days	4 Months	1 Year	Baseline	30 Days	4 Months	1 Year
Clinical Status								
Blood pressure–mmHg								
No. evaluated	n=227	n=216	n=179	n=104	n=220	n=213	n=173	n=109
Systolic*	146.8 ± 21.8	140.8 ± 21.7	134.8 ± 17.0	133.8 ± 17.1	143.9 ± 20.6	138.8 ± 20.0	133.1 ± 15.9	127.3 ± 15.9
Diastolic**	82.3 ± 12.0	81.1 ± 12.0	77.3 ± 10.0	77.9 ± 12.2	77.9 ± 10.7	79.3 ± 11.5	76.2 ± 9.7	73.2 ± 10.6
Lipids – mg/dl								
No. evaluated	n=226	n=215	n=175	n=94	n=219	n=210	n=174	n=87
LDL†	97.7 ± 36.6	71.7 ± 26.5	72.8 ± 26.0	68.2 ± 27.5	96.3 ± 38.5	77.6 ± 28.3	75.9 ± 40.9	65.6 ± 26.6
HDL†	38.8 ± 10.1	39.3 ± 11.6	41.9 ± 11.4	45.1 ± 13.2	37.8 ± 10.6	41.8 ± 11.4	43.2 ± 13.3	n=88 45.7 ± 12.9
Non-HDL†	116.6 ± 40.3	89.9 ± 30.0	90.9 ± 30.8	n=93 91.4 ± 30.9	116.6 ± 43.9	96.1 ± 30.4	94.3 ± 50.2	89.2 ± 28.9
Glycated hemoglobin in			6 Months:				6 Months:	

diabetic patients [§]								
No. evaluated	n=98		n=47	n=42	n=102		n=50	n=38
Level -%	8.3 ± 2.3		7.5 ± 2.0	7.2 ± 1.1	7.9 ± 2.1		7.8 ± 2.4	7.6 ± 2.0
Weight			4 Months:				4 Months:	
No. evaluated	n=227	n=215	n=180	n=108	n=224	n=211	n=170	n=110
Body Mass Index – Kg/m ²	30.7 ± 6.3	30.4 ± 6.3	30.4 ± 6.4	29.9 ± 5.8	30.3 ± 6.2	30.3 ± 6.2	30.0 ± 6.2	29.9 ± 6.2
Lifestyle Factor								
No. evaluated	n=227	n=218	n=181	n=109	n=223	n=212	n=173	n=113
Current smoker -%	30	21	20	24	24	15	17	19
Moderate or Vigorous Exercise [□] -%	29	44	n=182 57	61	34	43	56	54

Values are mean ± SD or percent of the number evaluated. To convert cholesterol values to millimoles per liter, multiply by 0.02586.

Lipid levels are performed at the Central Lipid Laboratory at baseline, 30 days, and 4 months with direct LDL measurement. Lipid levels at 1 year are performed at the local site and may include LDL values calculated using the Friedewald Equation.

Non-HDL = non-high density lipoprotein which is total cholesterol minus HDL cholesterol or the sum of low density lipoprotein (LDL) plus very low density lipoprotein (VLDL).

* The comparison between the two groups is significant at 1 year ($p=0.005$), but not at other time points.

** The comparison between the two groups is significant at baseline ($p<0.001$) and 1 year ($p=0.003$), but not at other time points.

† The comparison between the two groups is significant at 30 days (LDL $p=0.03$, non-HDL $p=0.03$; HDL $p=0.02$), but not at other time points.

§ According to the American Diabetes Association 2010 definition of diabetes. Values were not required at 30 days or 4 months.

□ defined by a PACE score of 4-8 with 4 defined by vigorous exercise less than 3 times per week or moderate exercise less than 5 times per week, and 8 defined by vigorous exercise at least 3 days a week for at least the last 6 months. Examples of moderate exercise are brisk walking, gardening, slow cycling that lasts at least 10 minutes. Examples of vigorous exercise are jogging, running, fast cycling that lasts at least 20 minutes.