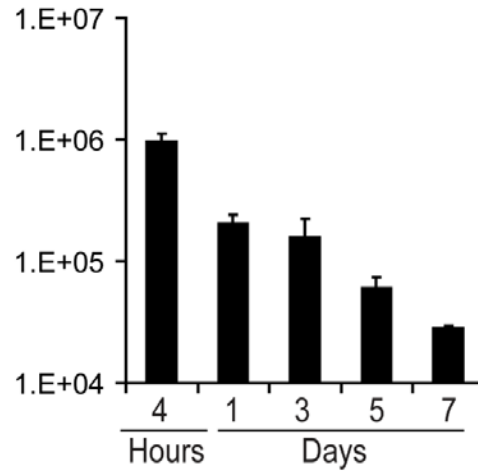


A *in vivo* bioluminescence (log scale)



B Total MRSA CFUs harvested from the infected skin (log scale)

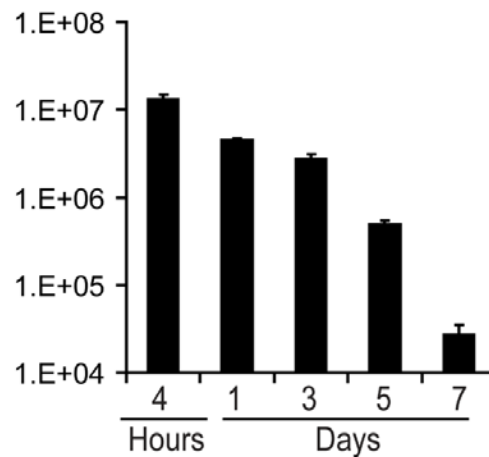


Figure S1. *In vivo* bioluminescent signals of CA-MRSA-infected wounds and *ex vivo*

bacterial CFU counts. Scalpel wounds on the backs of mice were inoculated with USA300

LAC::*lux* (2×10^6 CFU/10 μ l). (A) Bacterial counts as measured by *in vivo* bioluminescent signals

(mean total flux [photons/s] \pm sem) (logarithmic scale) from mice (n=6 mice per group) imaged

at 4-h and on days 1, 3, 5 and 7. (B) Mean CFU \pm SEM (logarithmic scale) recovered from 8-mm

lesional punch biopsies from euthanized mice (n=6 mice per group) performed at 4-h and on

days 1, 3, 5 and 7.