

Fig. S1a - Sample level rarefaction

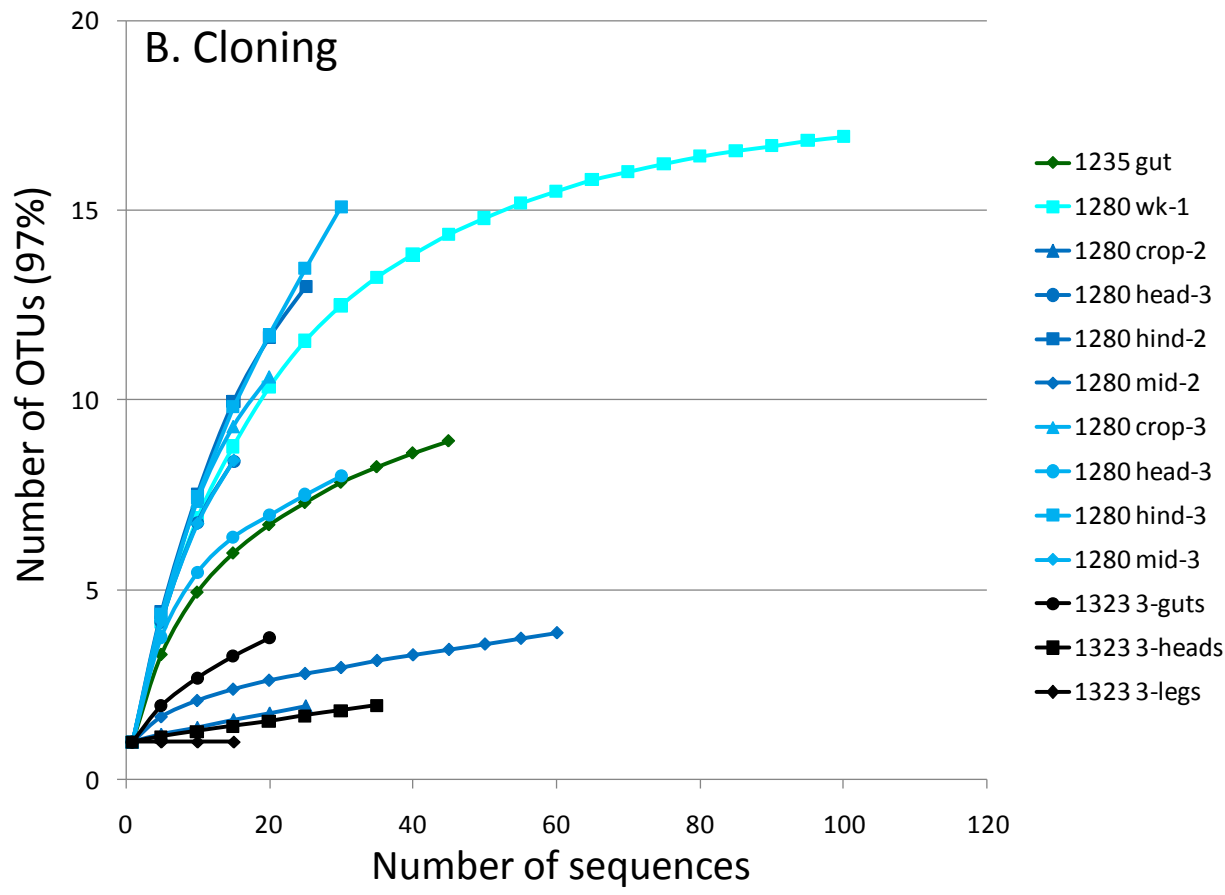
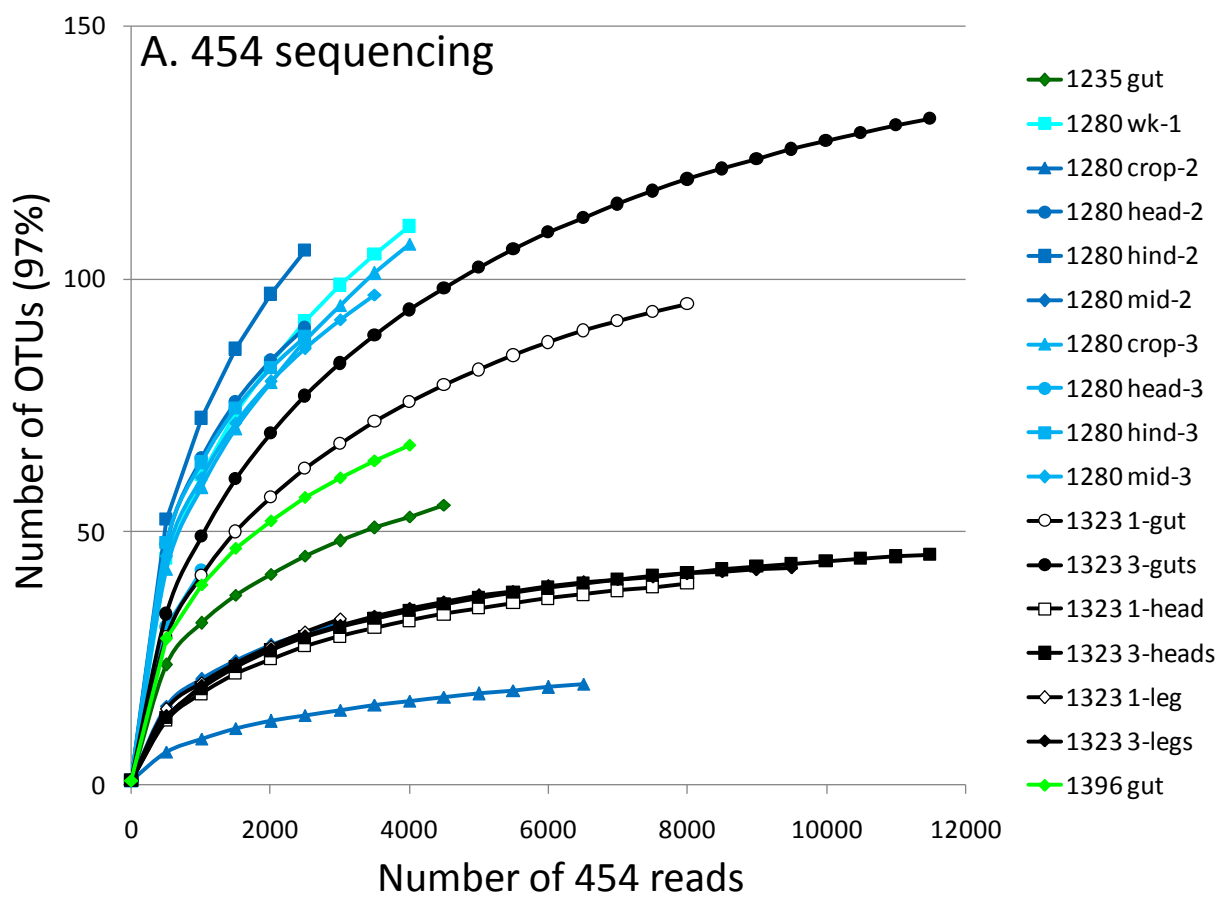


Fig. S1b - Individual level rarefaction

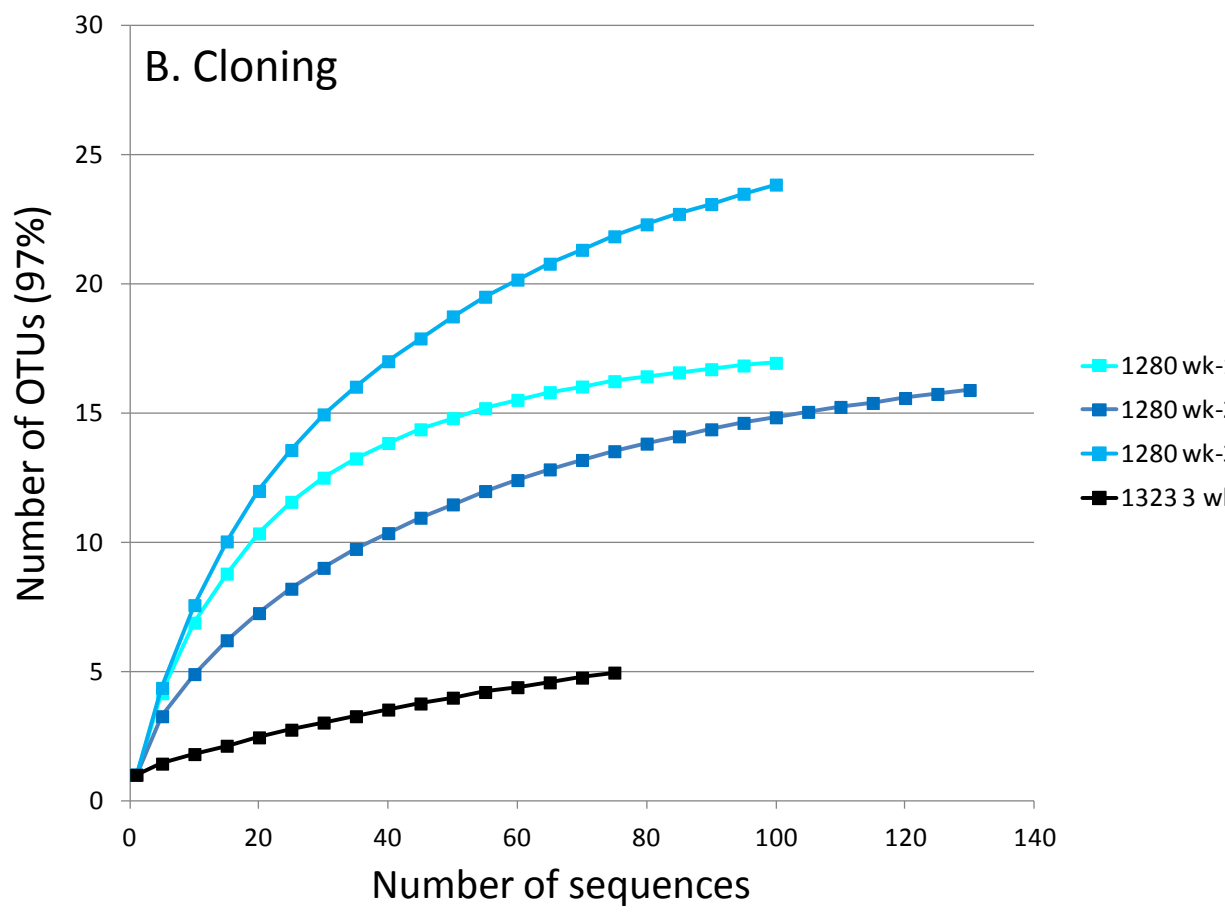
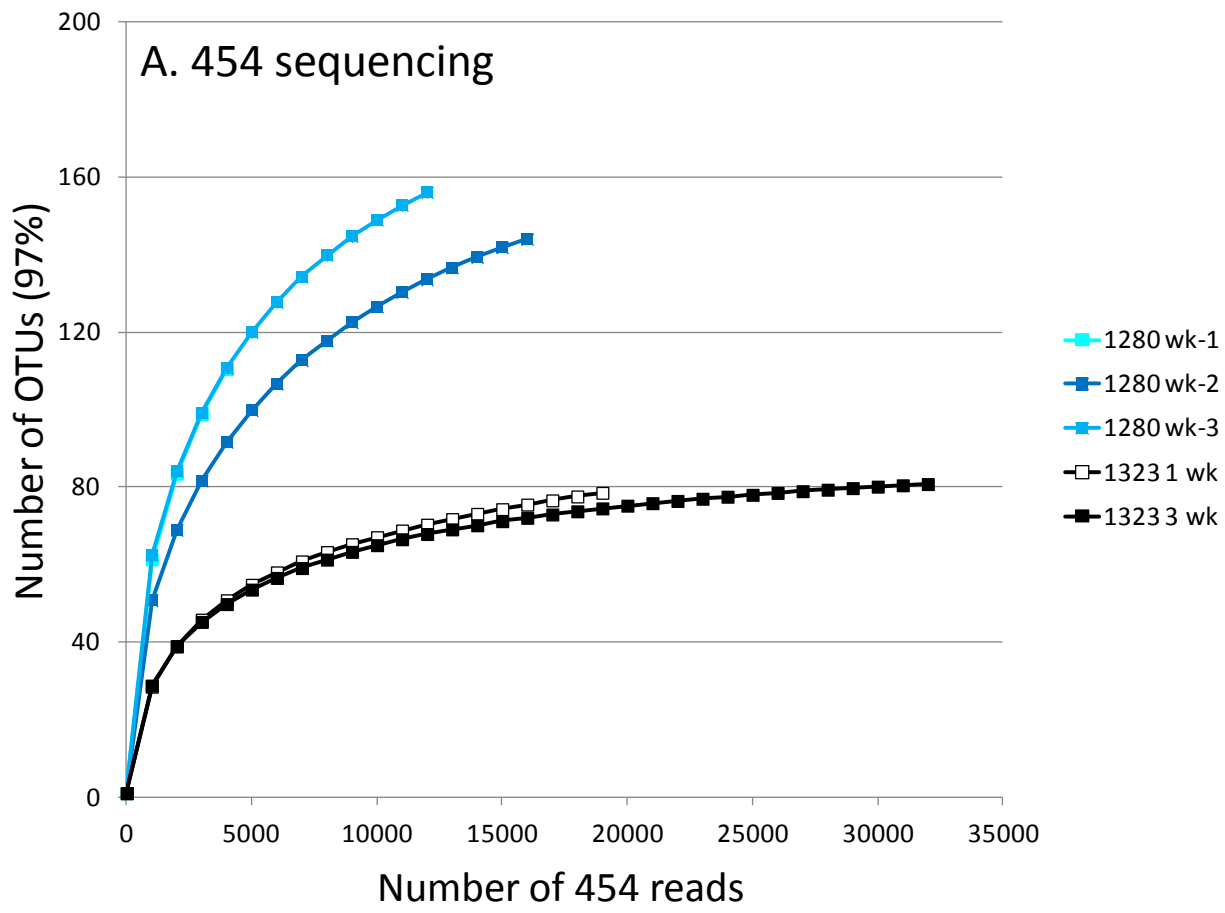


Fig S1c - Rarefaction - guts

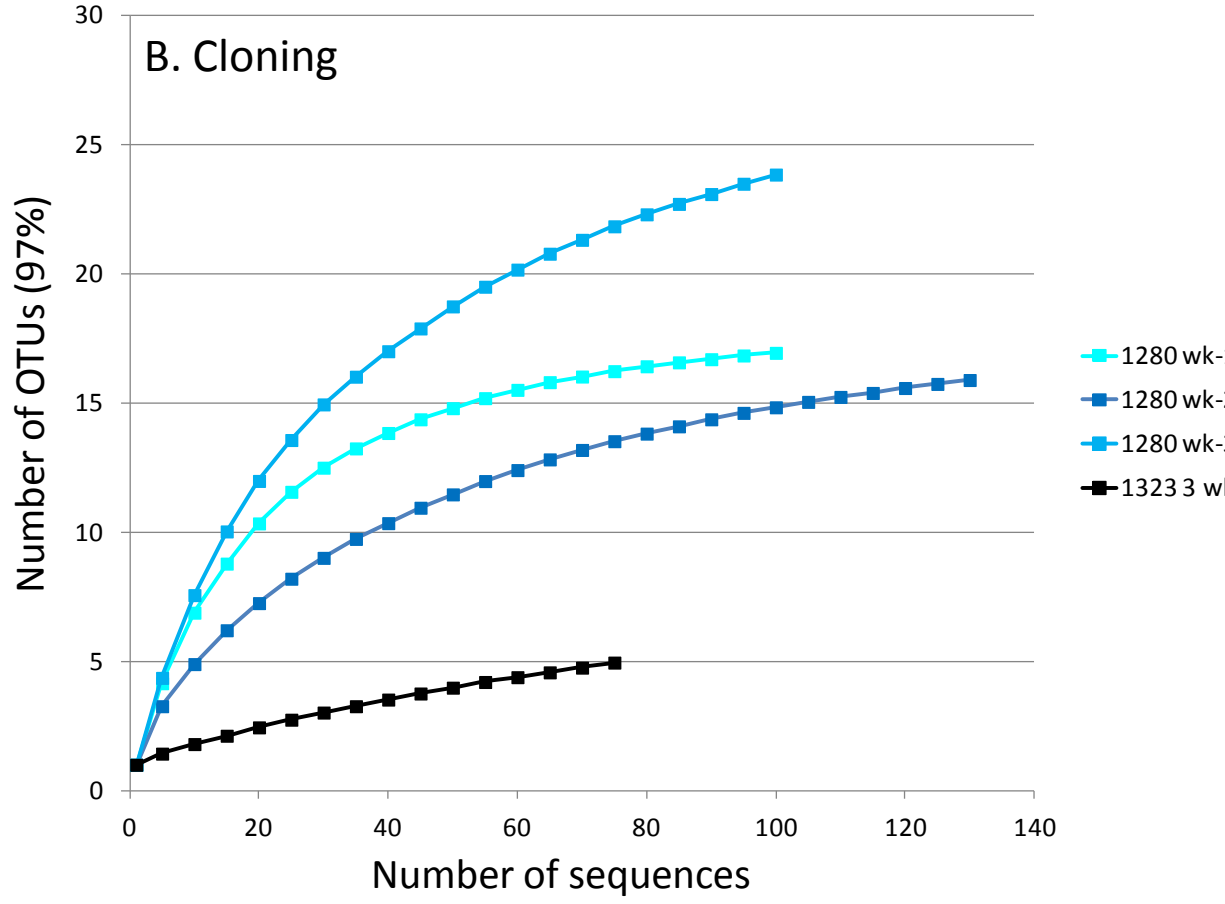
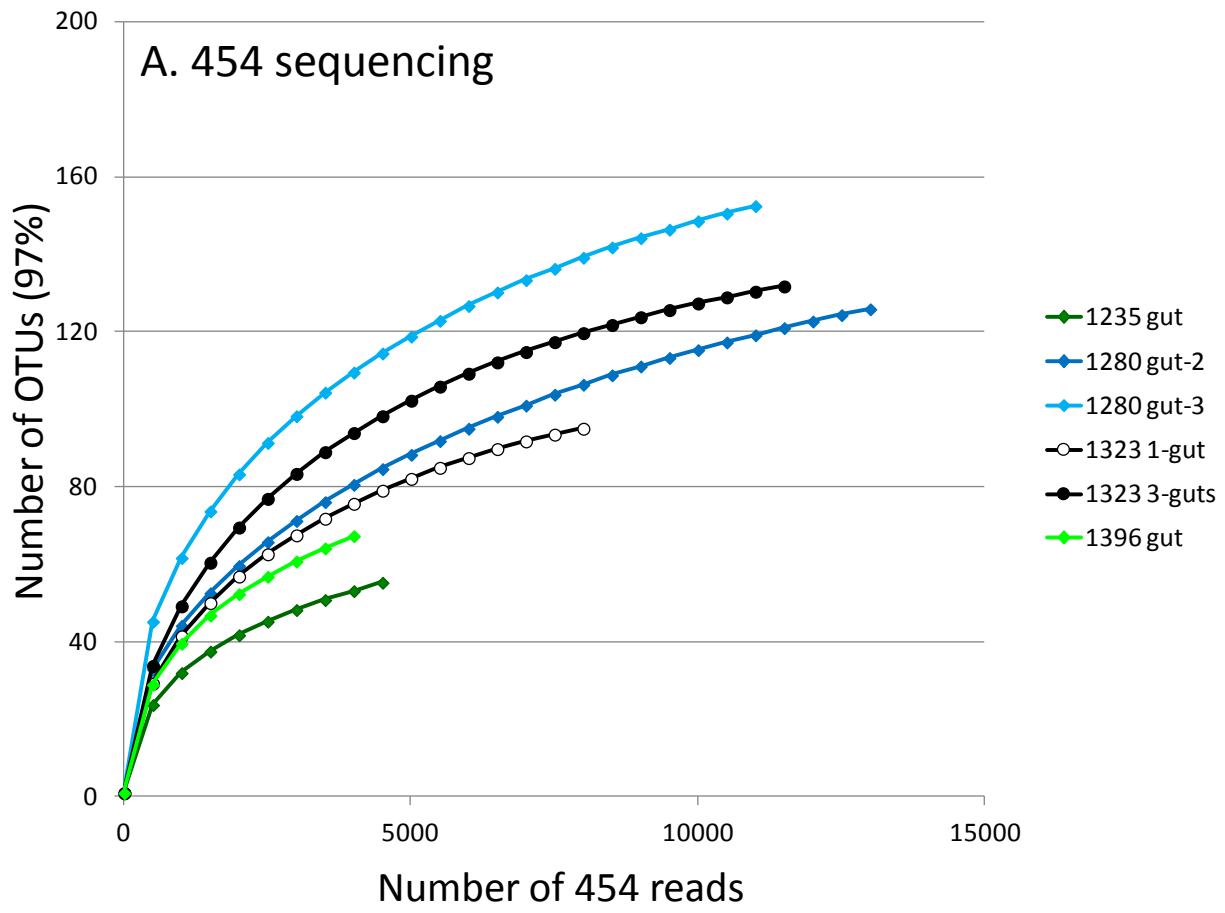


Fig S1d - Colony level rarefaction

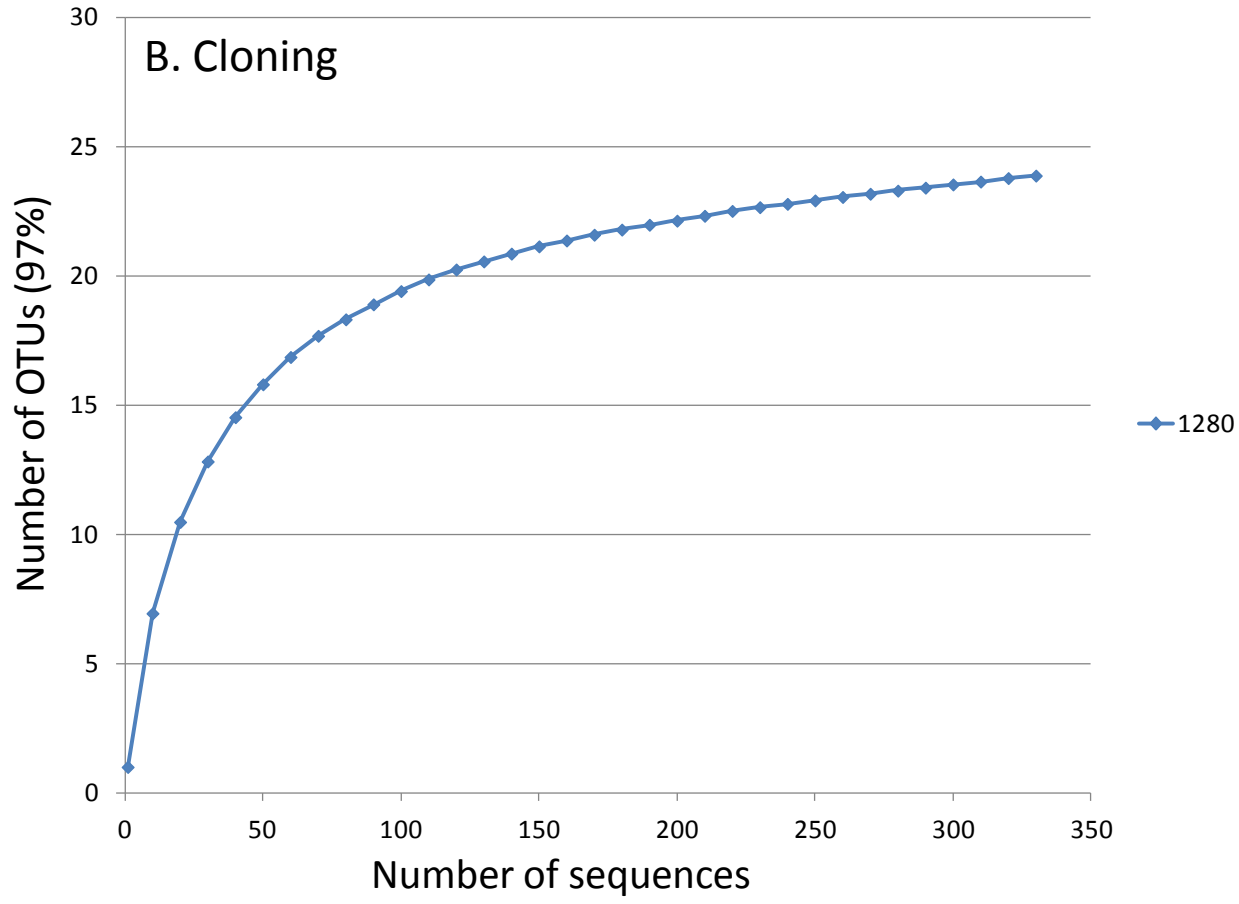
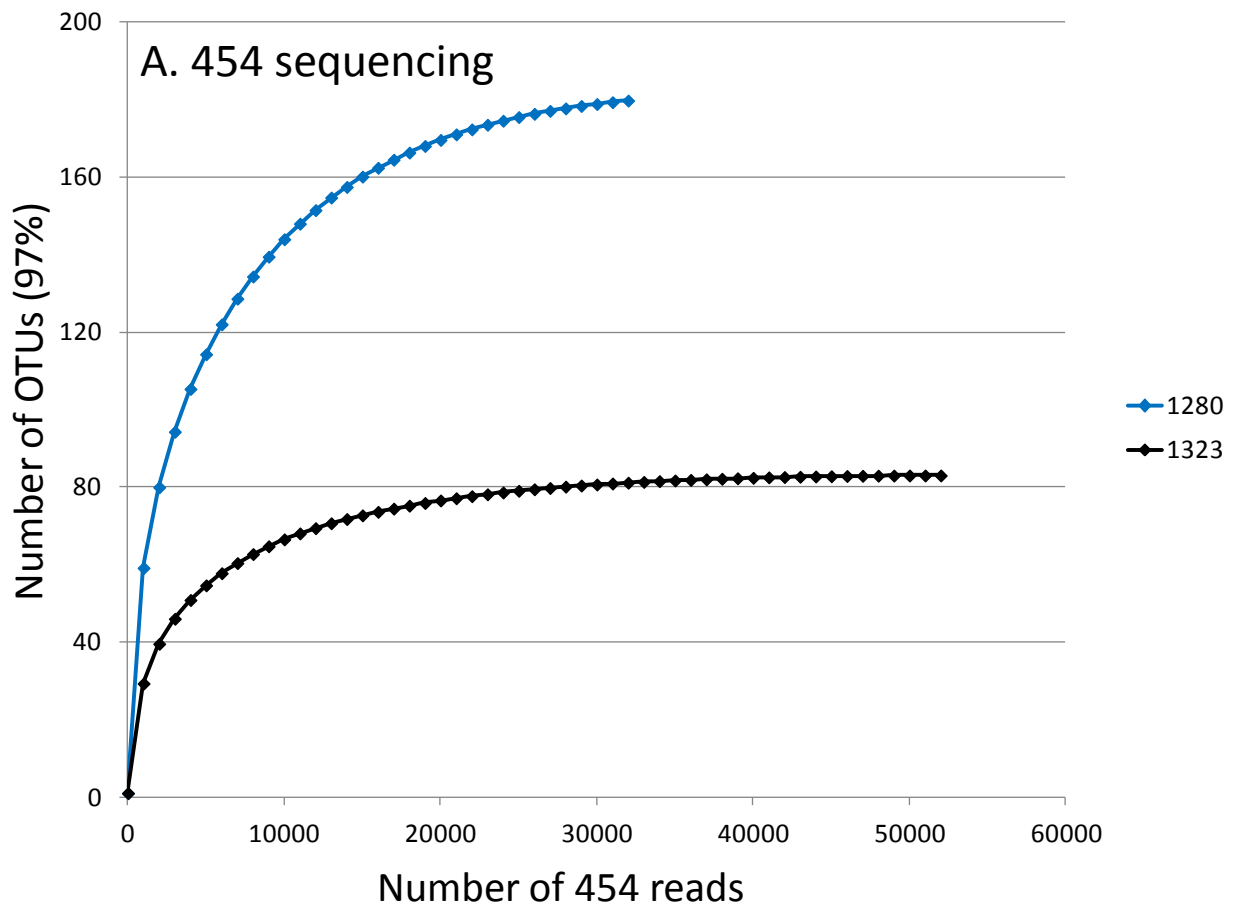


Fig S1e – Species level rarefaction

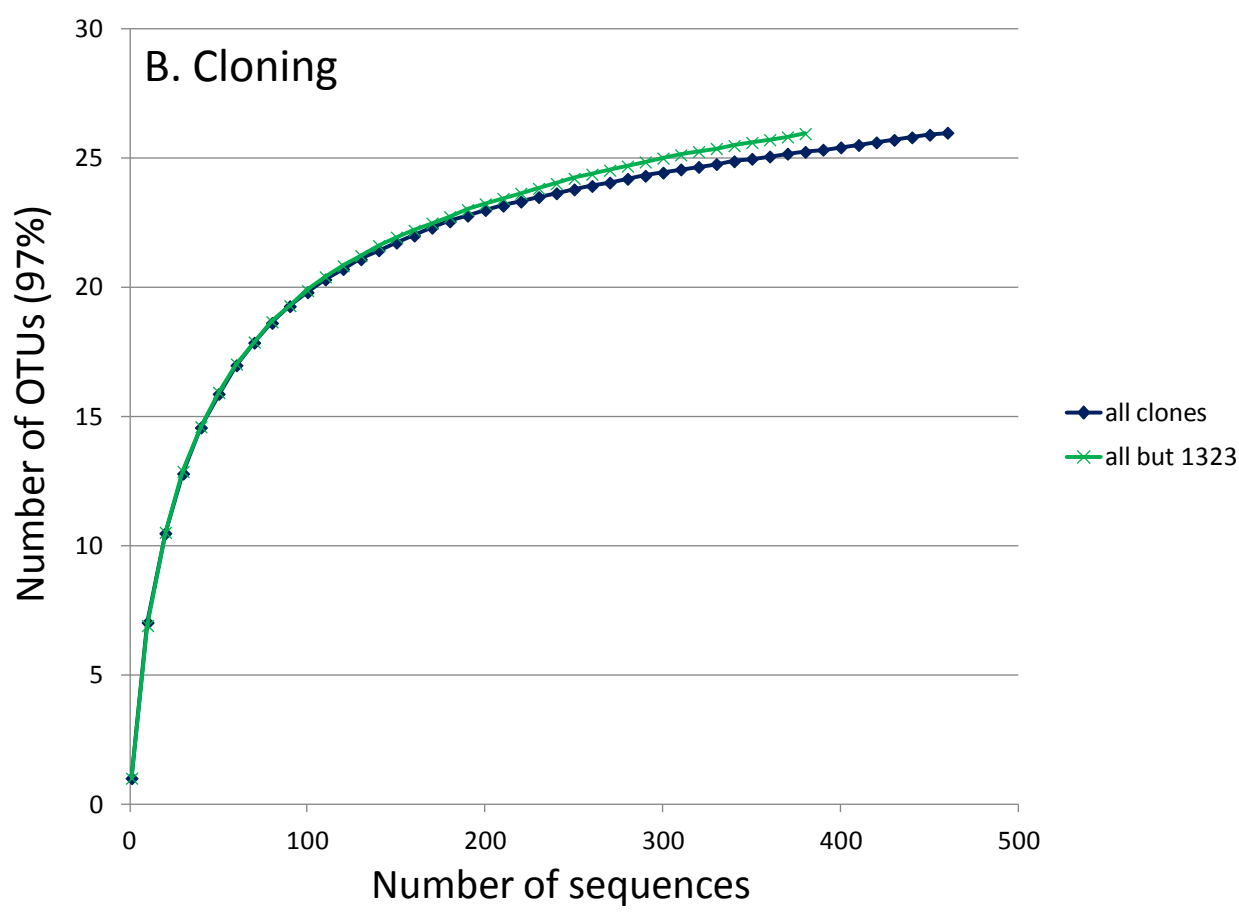
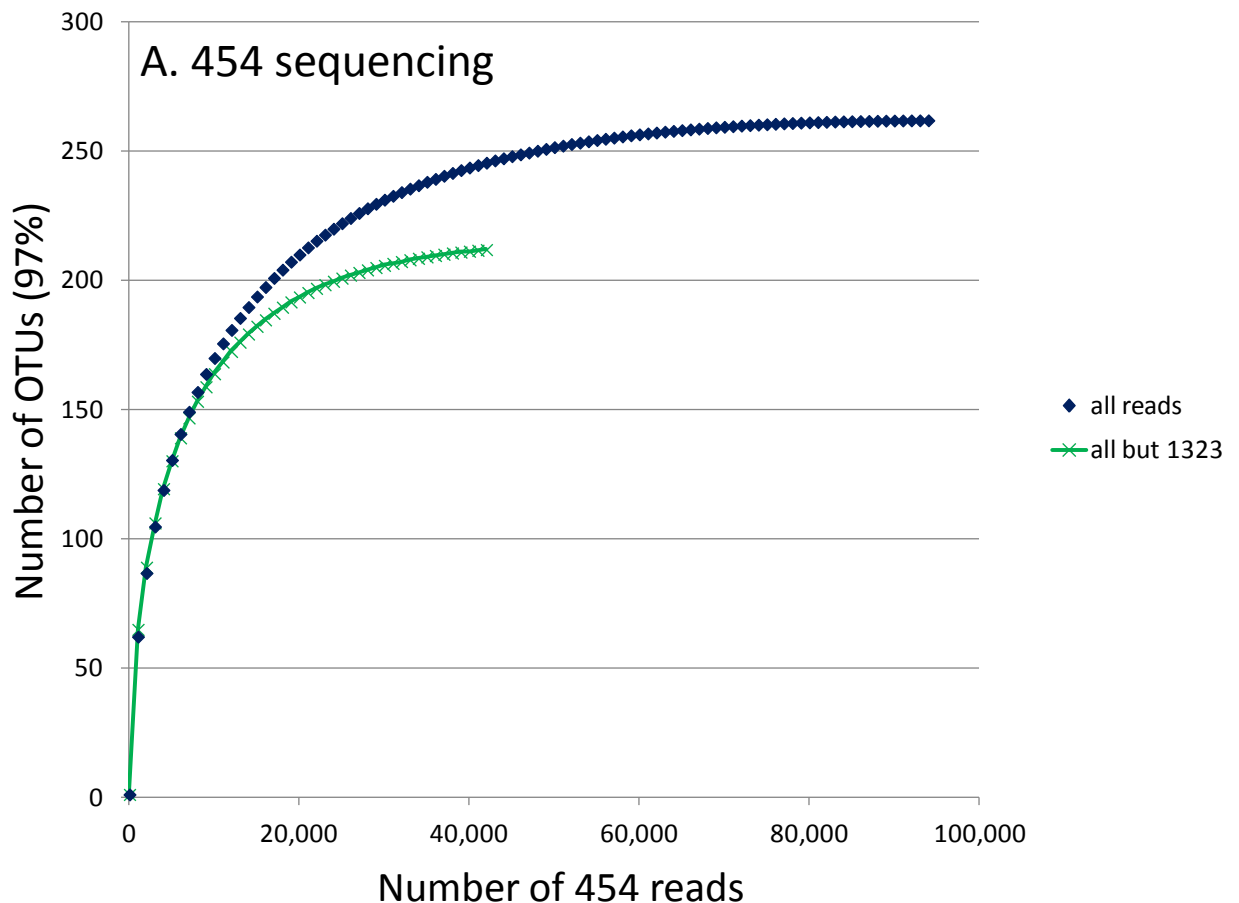


Fig S1. Ant bacteria species richness rarefaction curves. Curves were generated of the 97% OTUs for all samples that were subjected to (A) Sanger sequencing of clone libraries and (B) 454 pyrosequencing. To facilitate comparison, in S1b, S1c, S1d, and S1e samples were pooled to combine all reads or clones for each individual ant, gut, colony, and species, respectively if we had analyzed several sub-parts for each level. Note that in S1e, rarefaction curves are displayed for all samples and also for all samples, but excluding the *Spiroplasma* infected colony CSM1323. Bacterial sample origins are denoted by colored lines and shapes as denoted in the legend. Note that "hind" refers to the hindgut, "mid" to the midgut, and "wk" to an entire worker.