

*csaB*

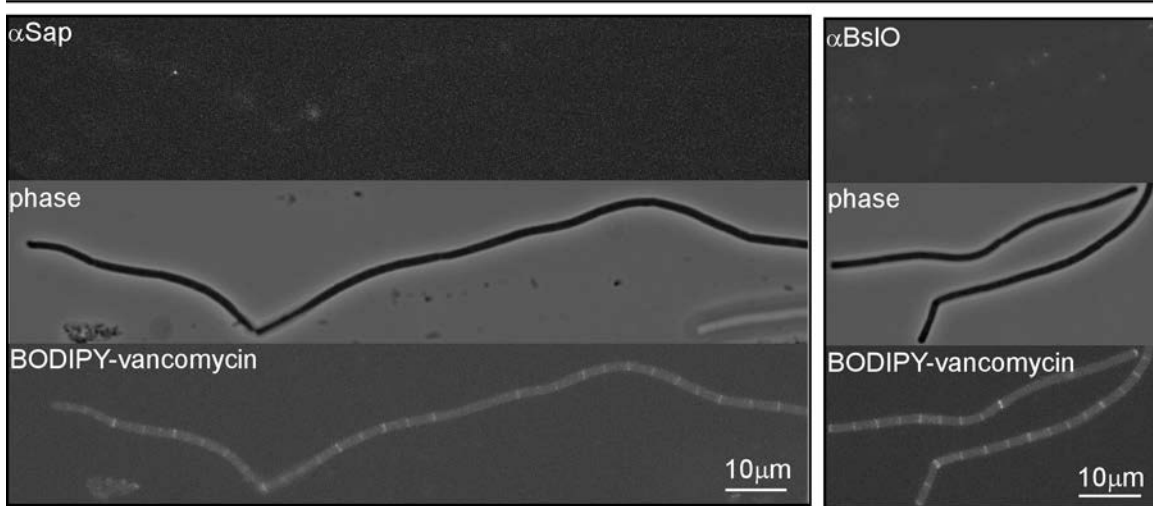


FIG. S1. The *B. cereus* G9241 *csaB* mutant cannot assemble S-layer proteins and S-layer associated proteins in the bacterial envelope. Phase contrast and fluorescence microscopy images of *csaB* mutant *B. cereus* G9241 grown to exponential phase in BHI. Bacilli were stained with rabbit antisera specific for Sap and BsIO and with Alexa-Fluor 594 conjugated secondary antibody (red). Cell wall septa between adjacent bacilli were revealed by staining with BODIPY-vancomycin (green).