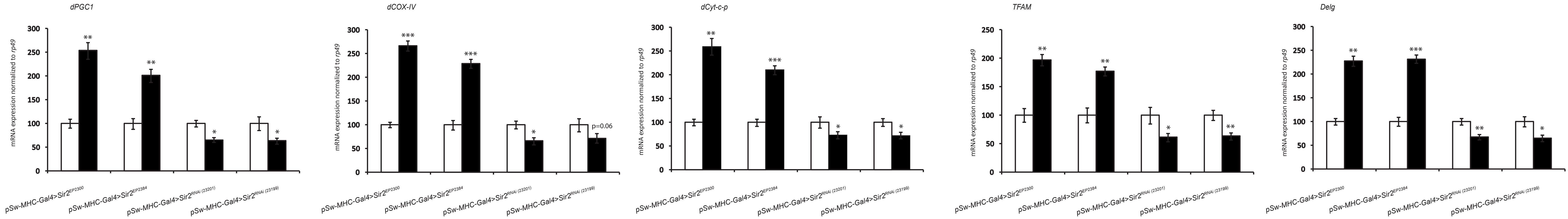
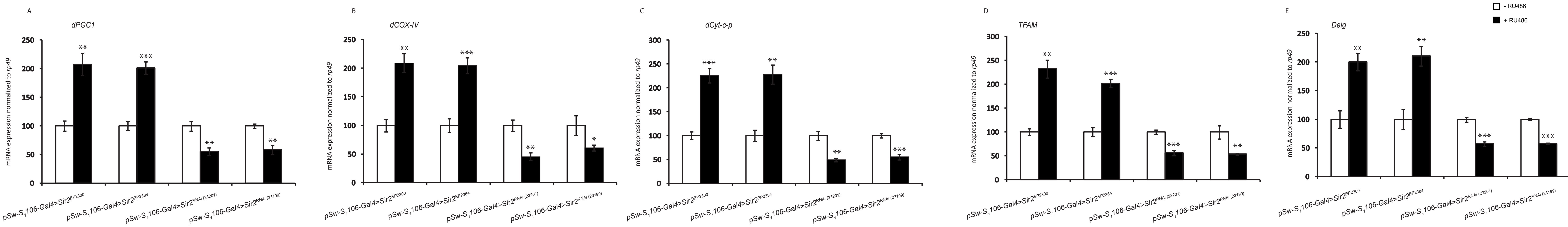


SUPPLEMENTARY FIGURE 1

□ - RU486
 ■ + RU486

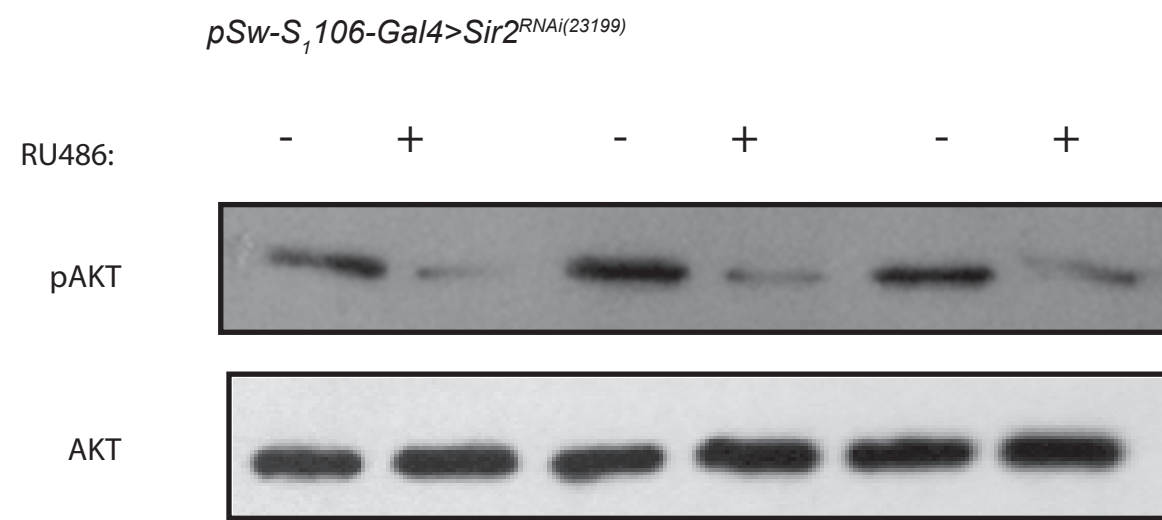


SUPPLEMENTARY FIGURE 2

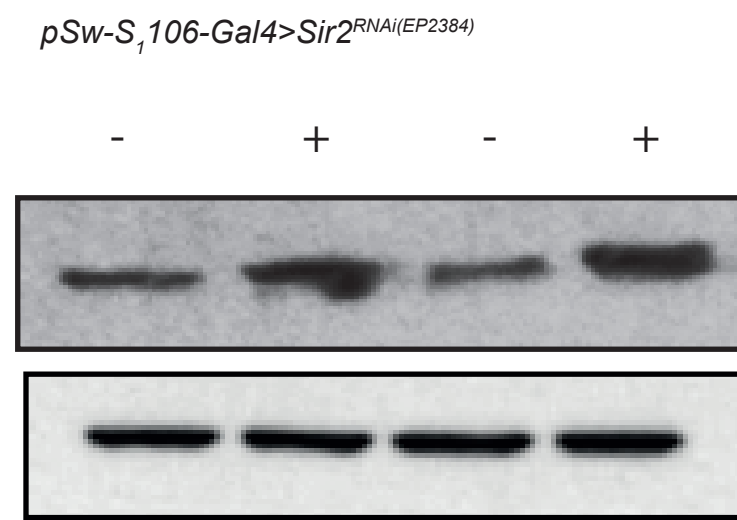


SUPPLEMENTARY FIGURE 3

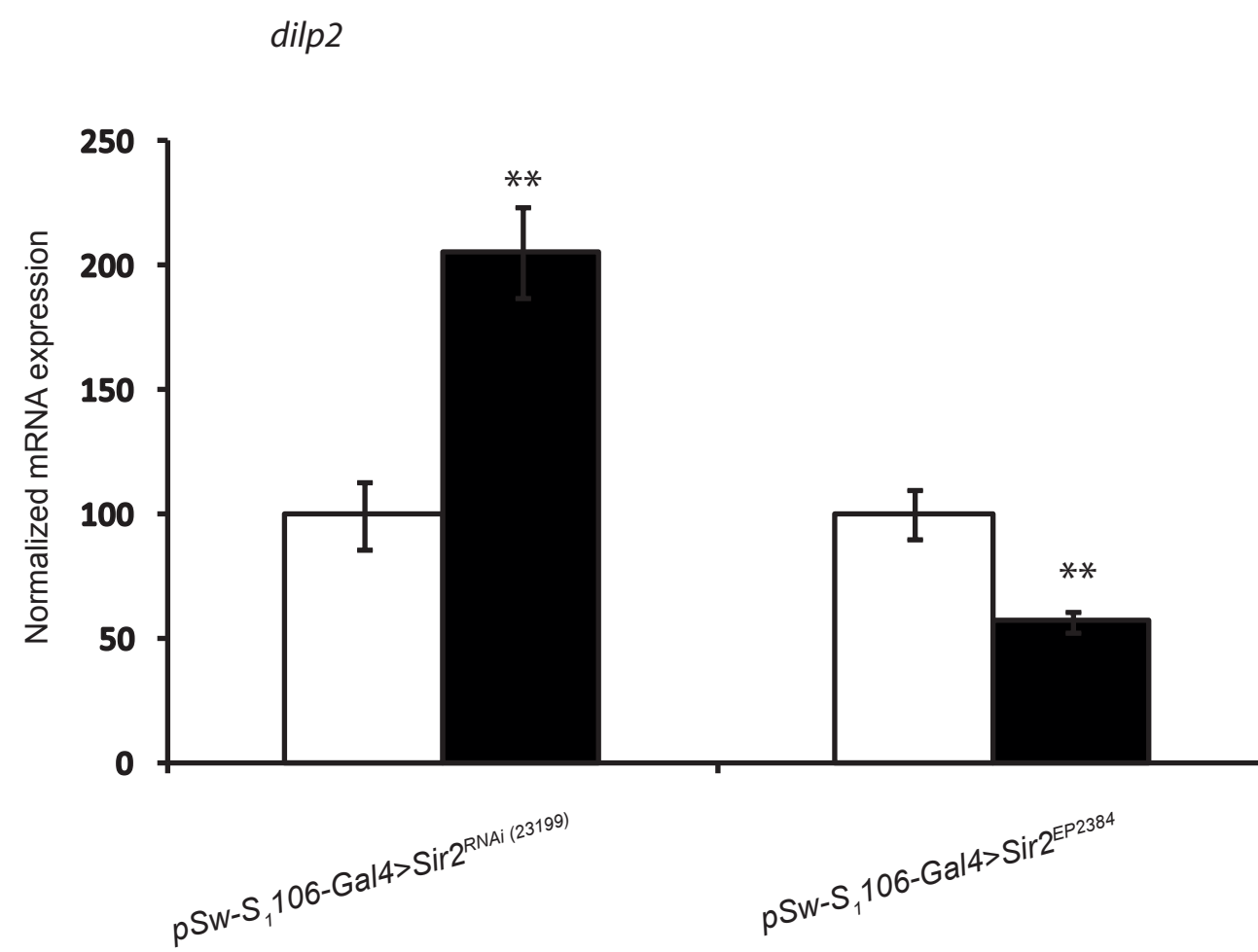
A



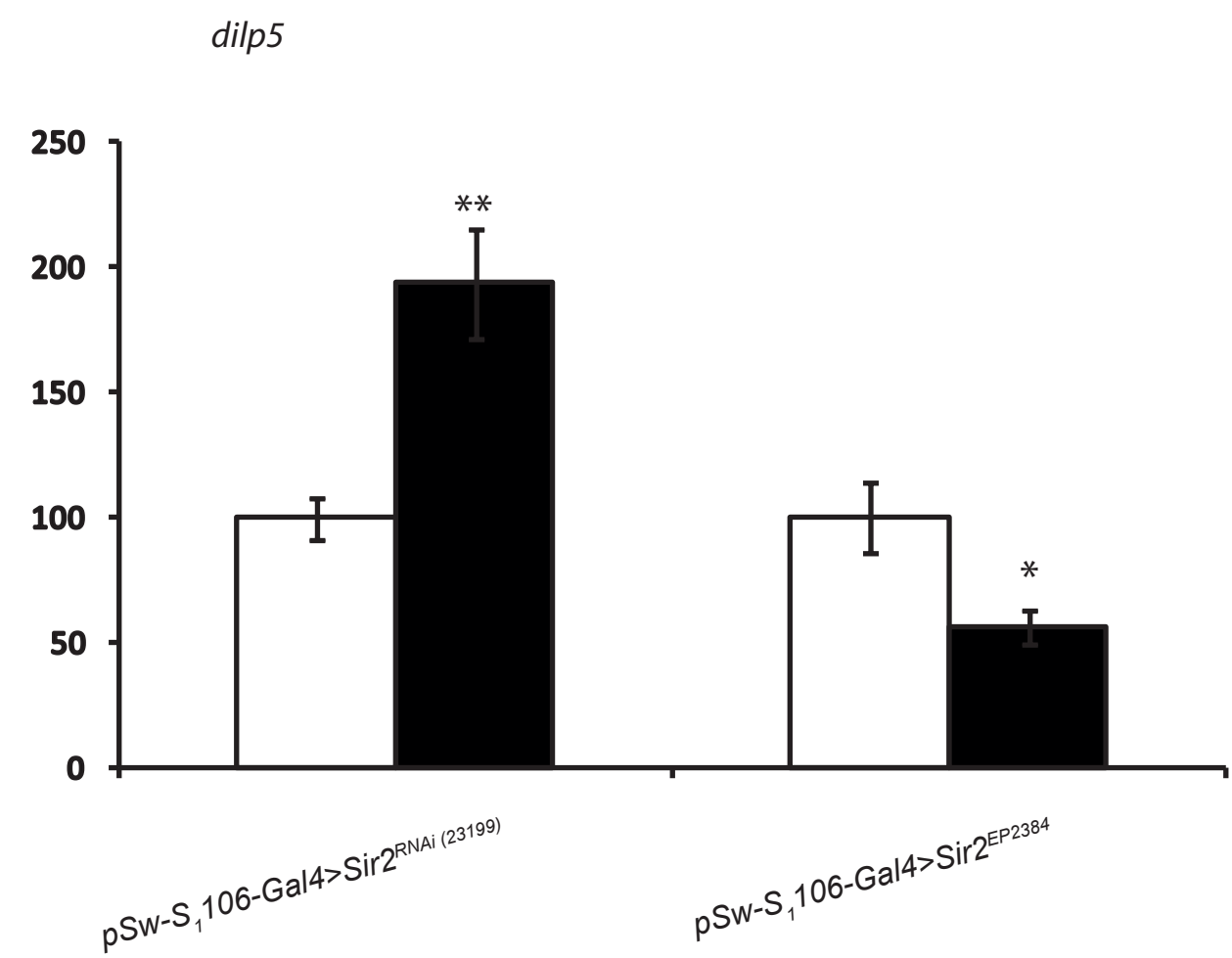
B



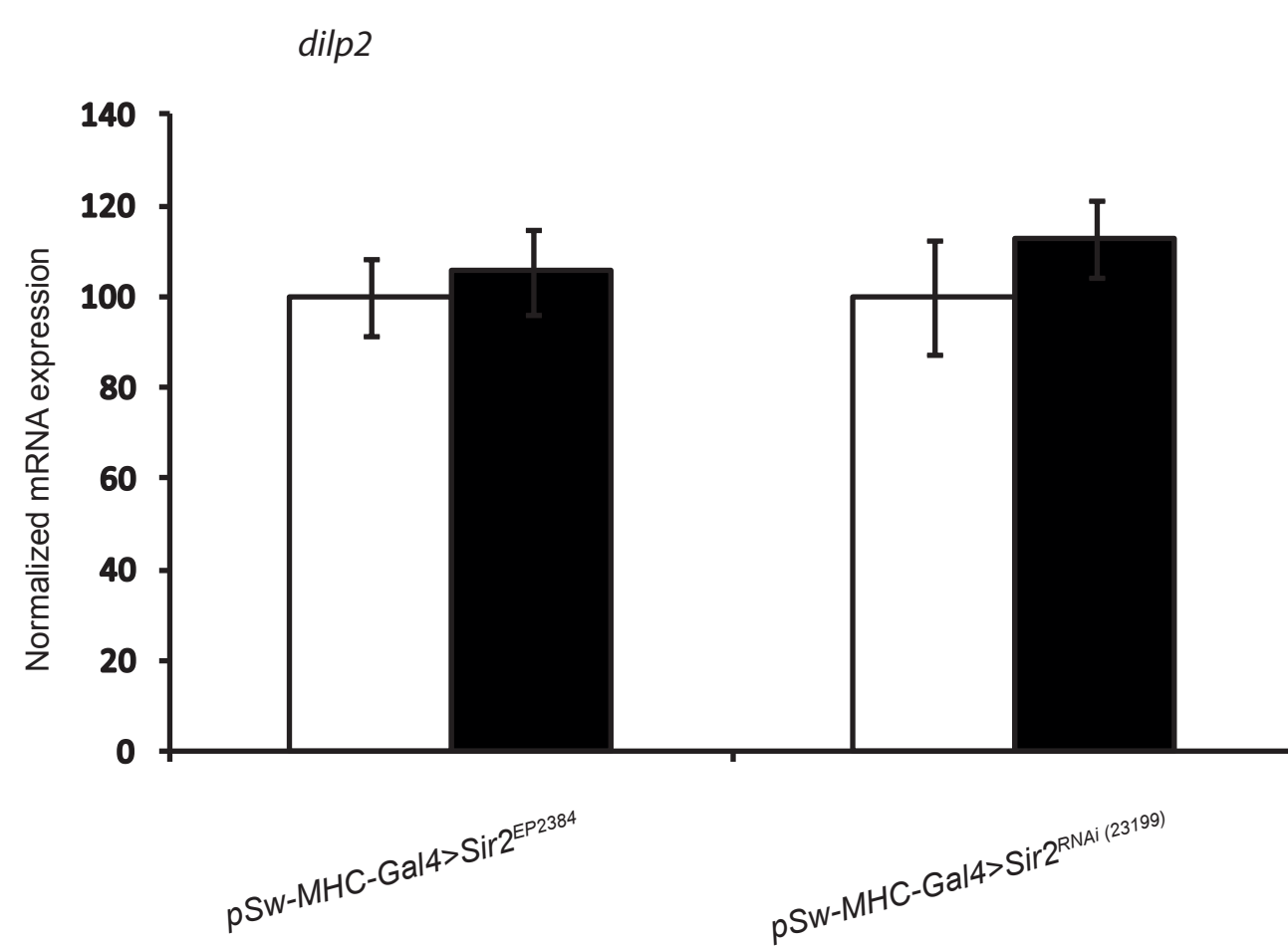
C



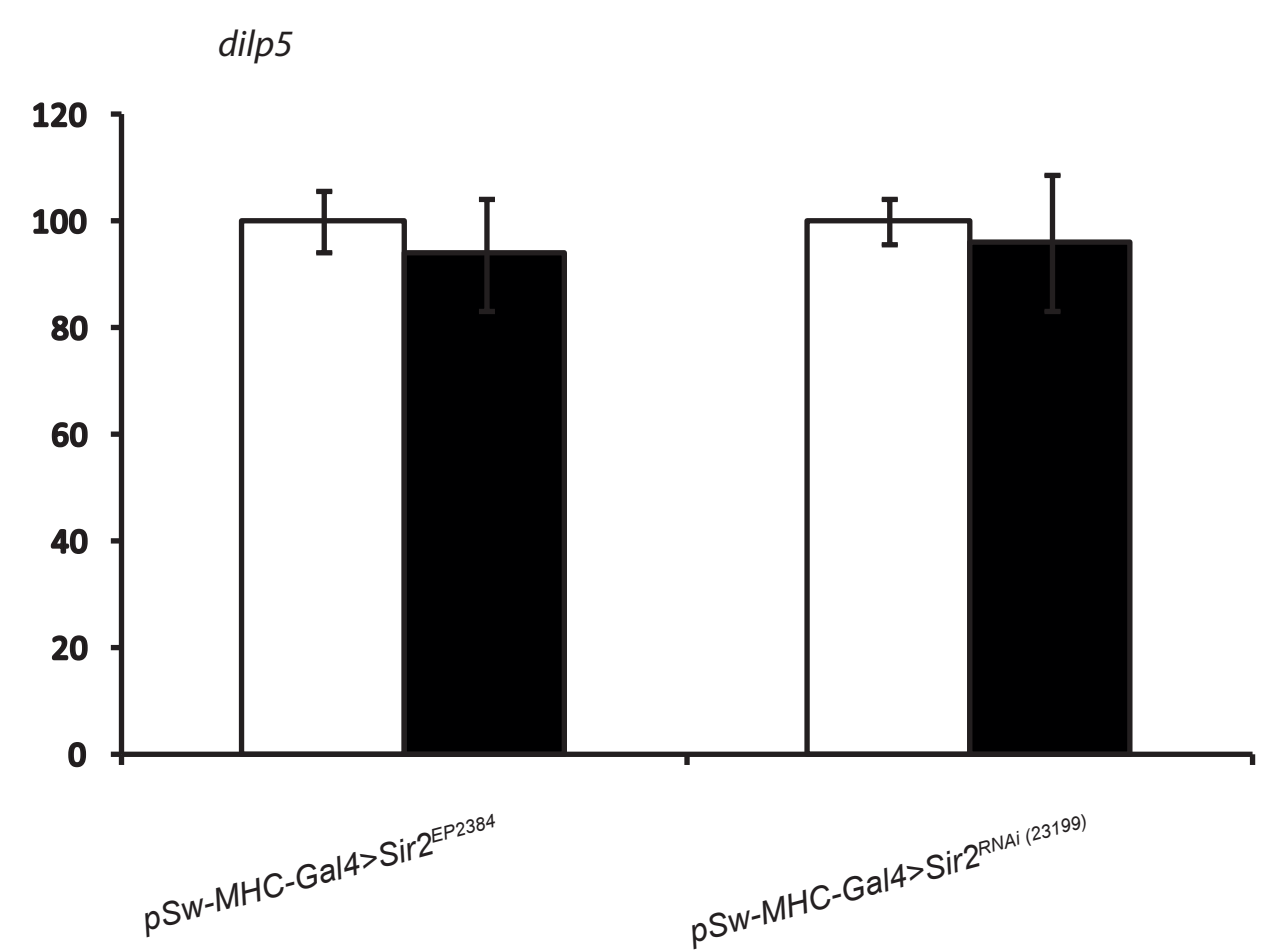
D

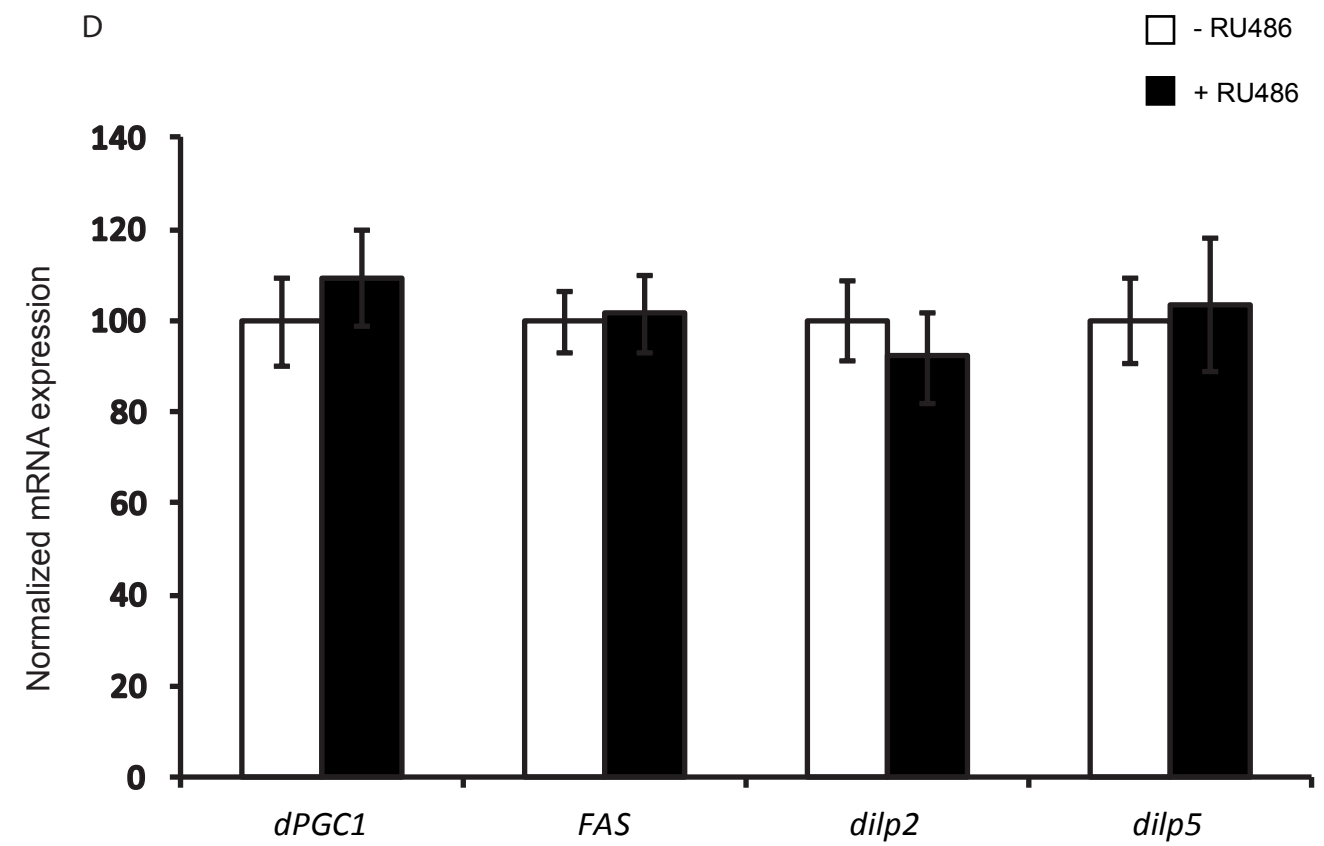
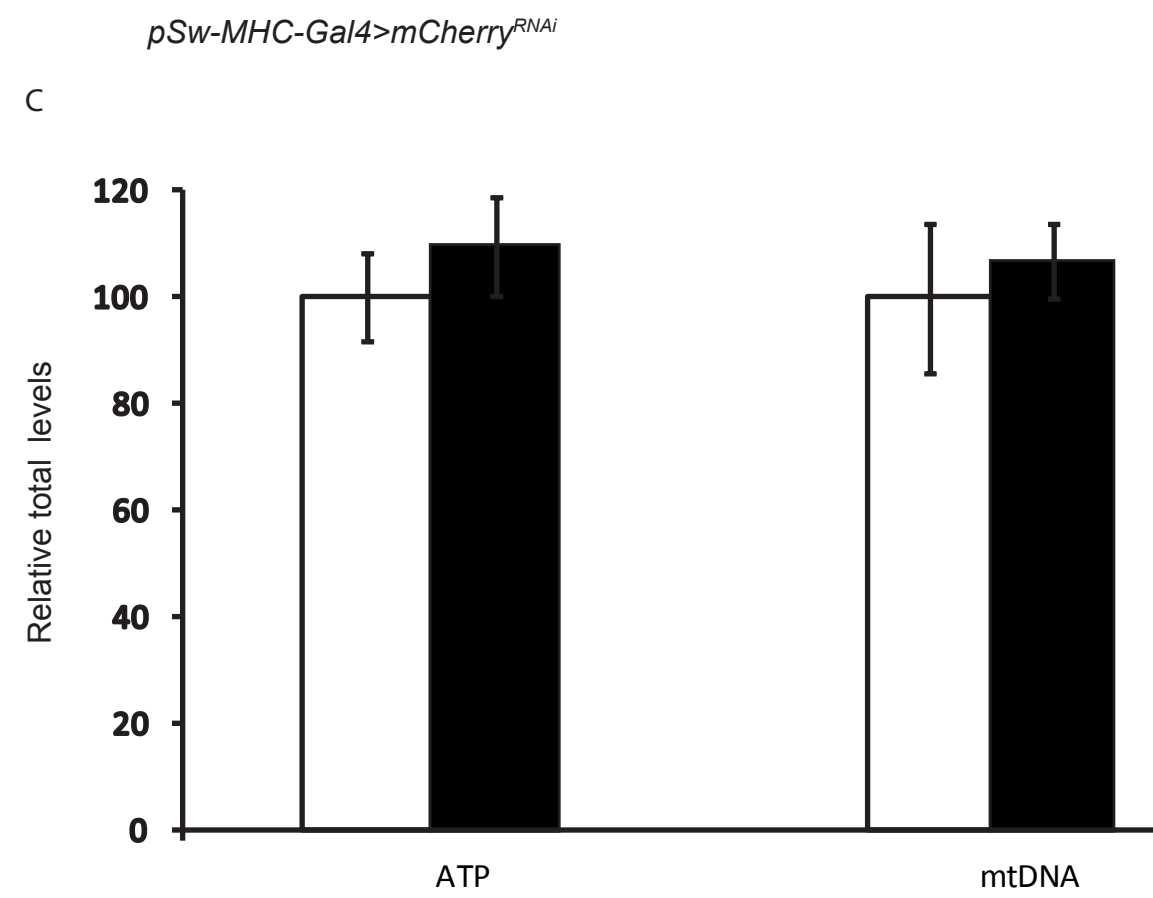
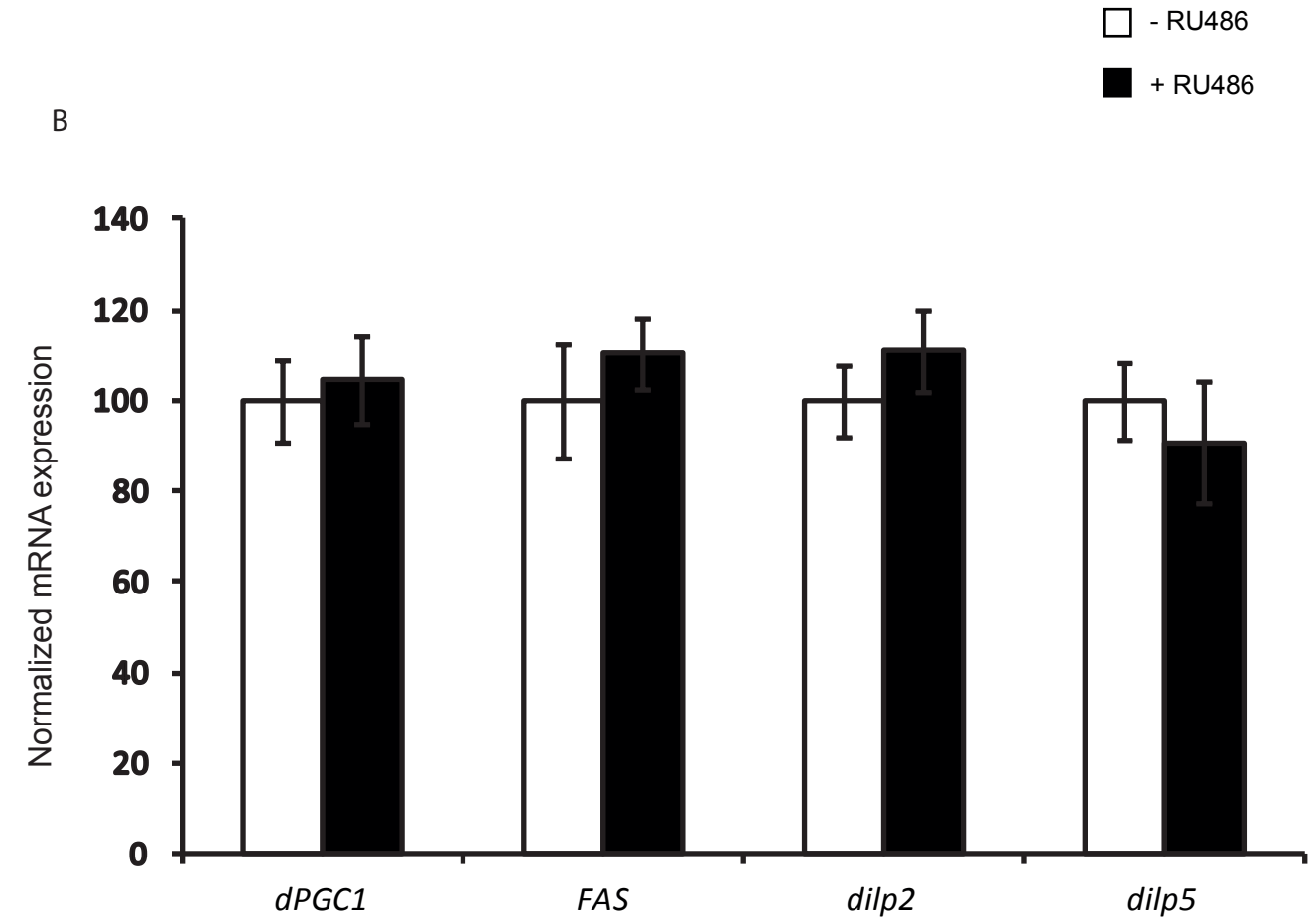
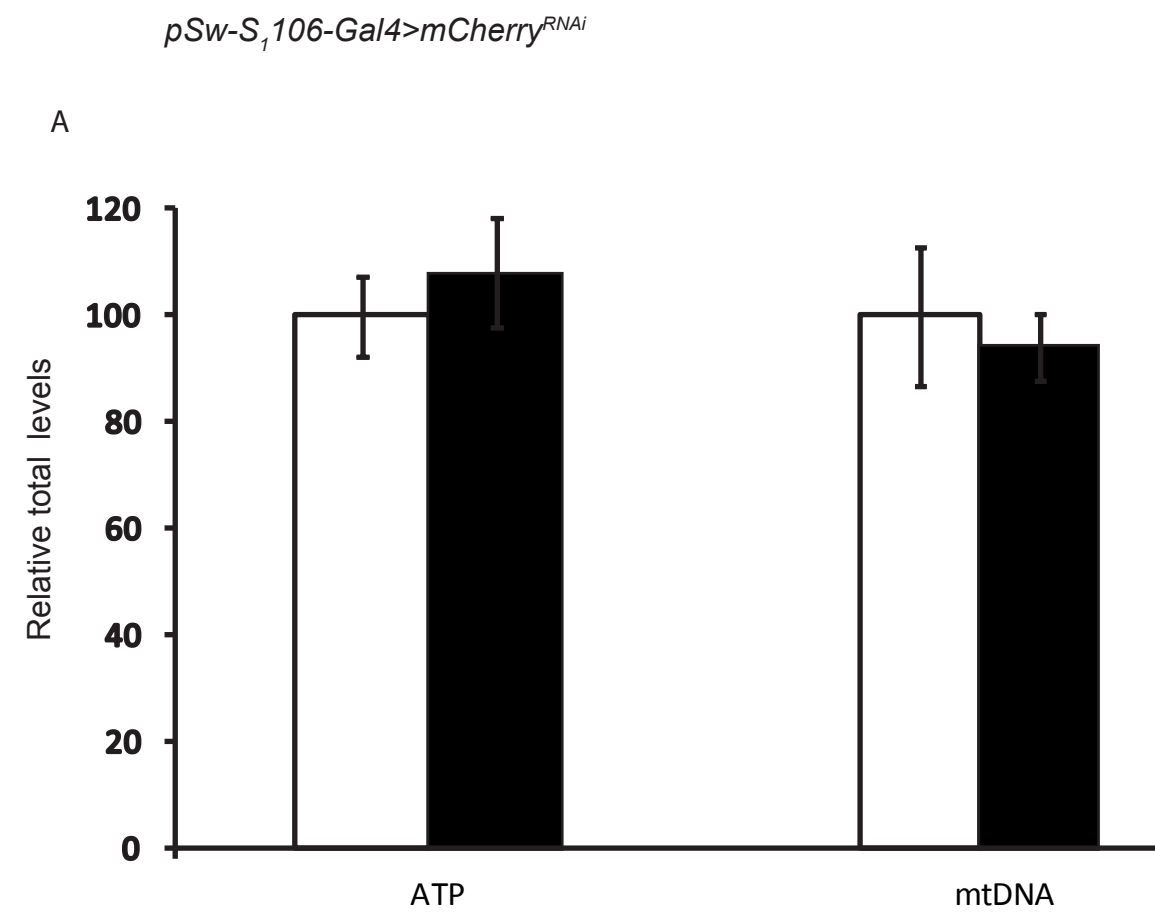


E



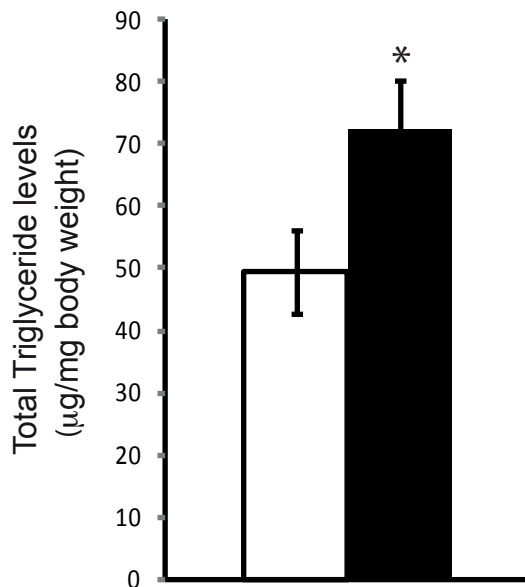
F



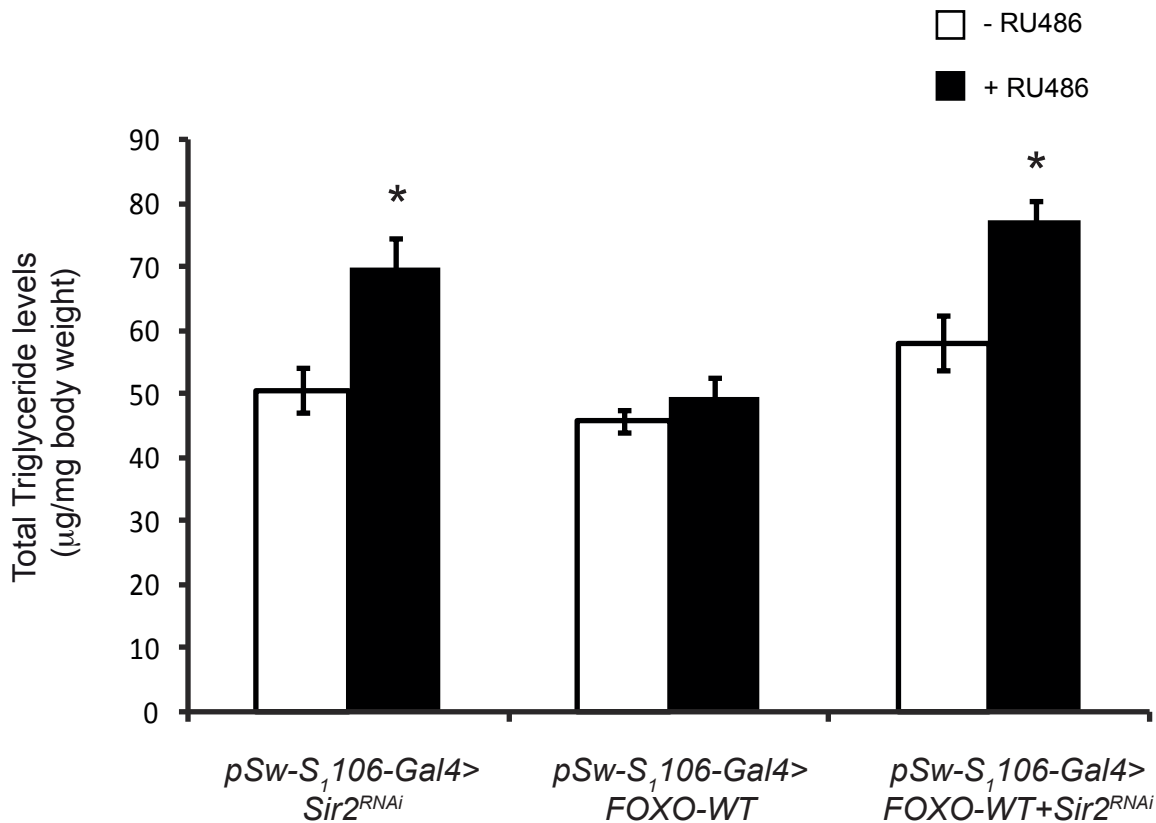


pSw-S₁106-Gal4>Sir2^{RNAi(23201)}

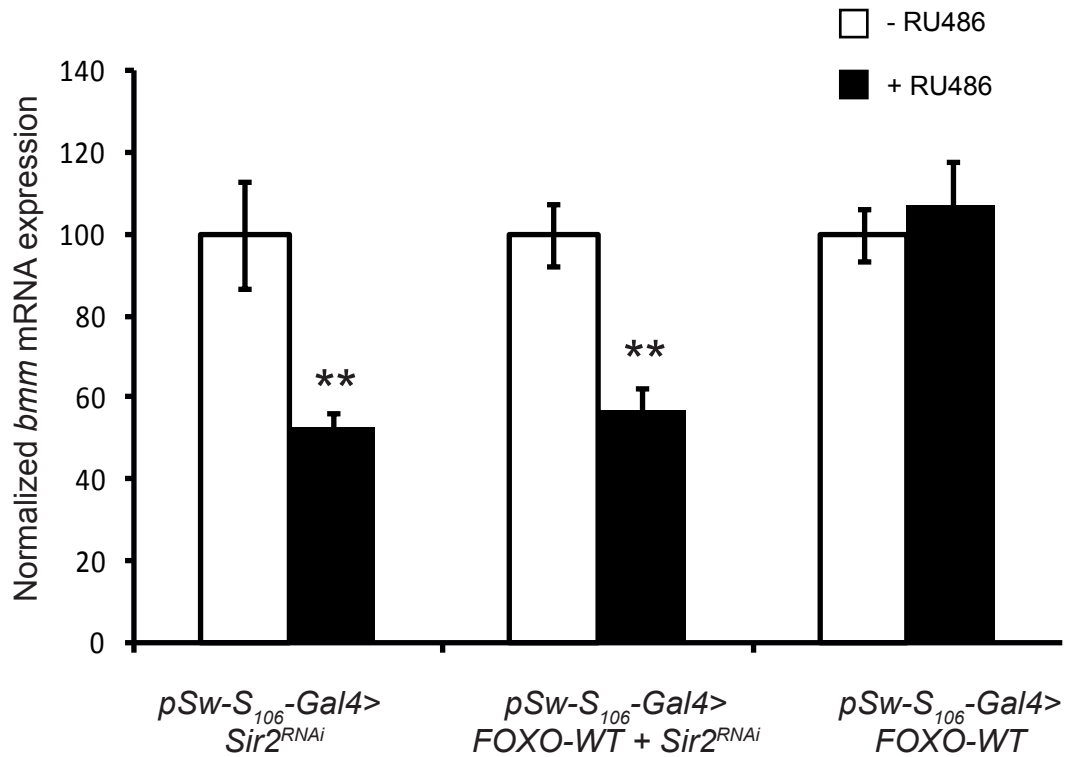
□ - RU486
■ + RU486



SUPPLEMENTARY FIGURE 6



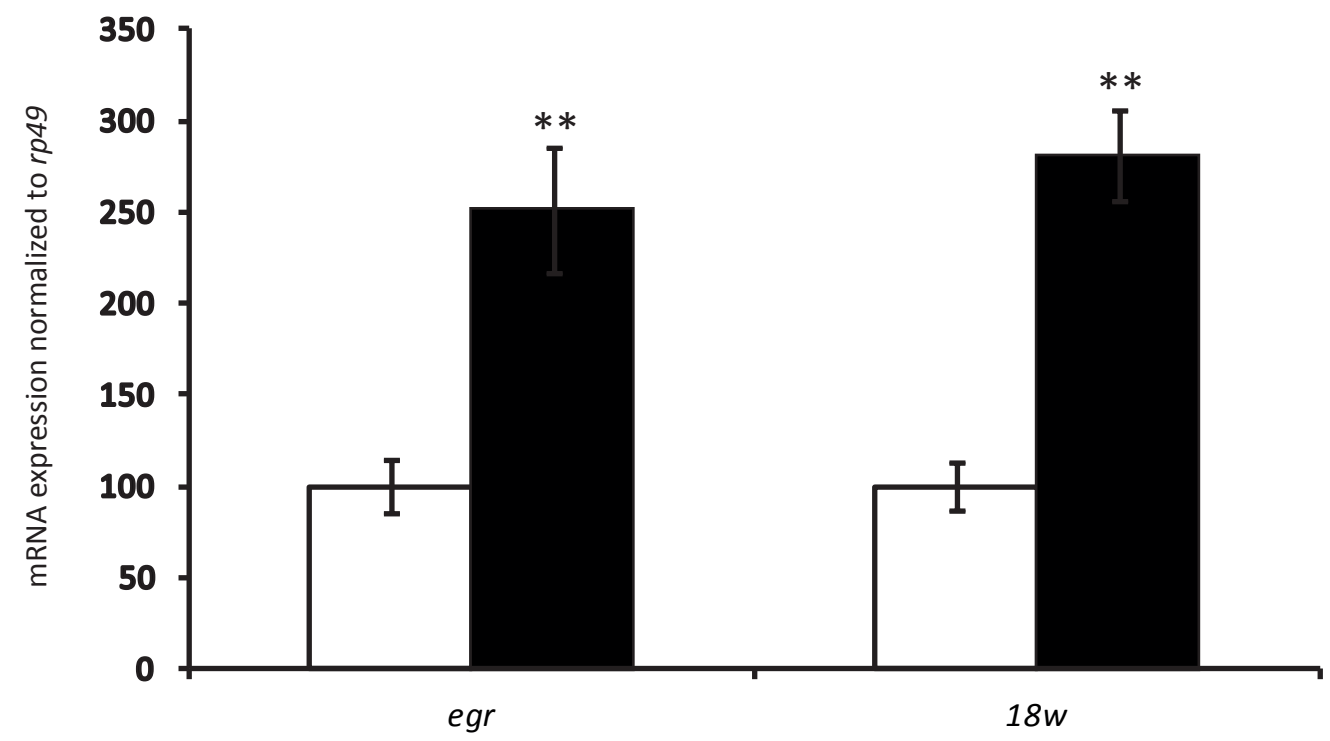
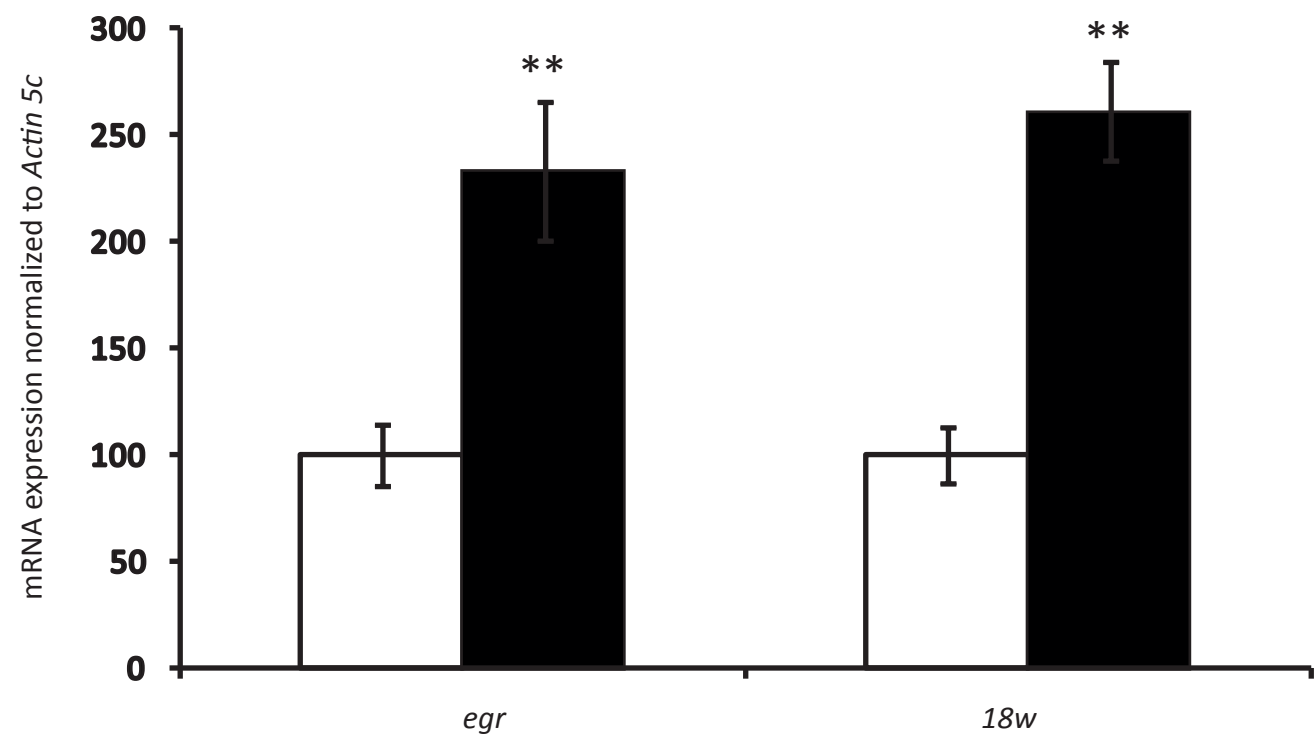
SUPPLEMENTARY FIGURE 7



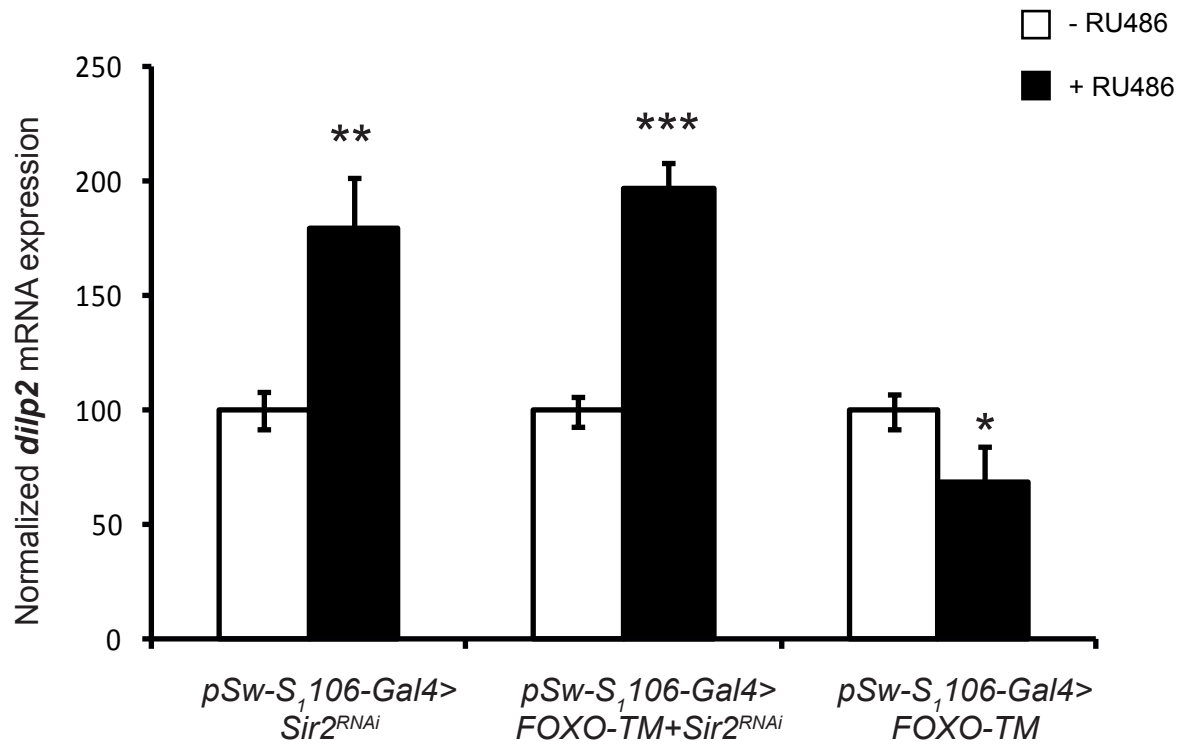
SUPPLEMENTARY FIGURE 8

pSw-S₁106-Gal4>Sir2^{RNAi}
(Fatbody)

□ - RU486
■ + RU486

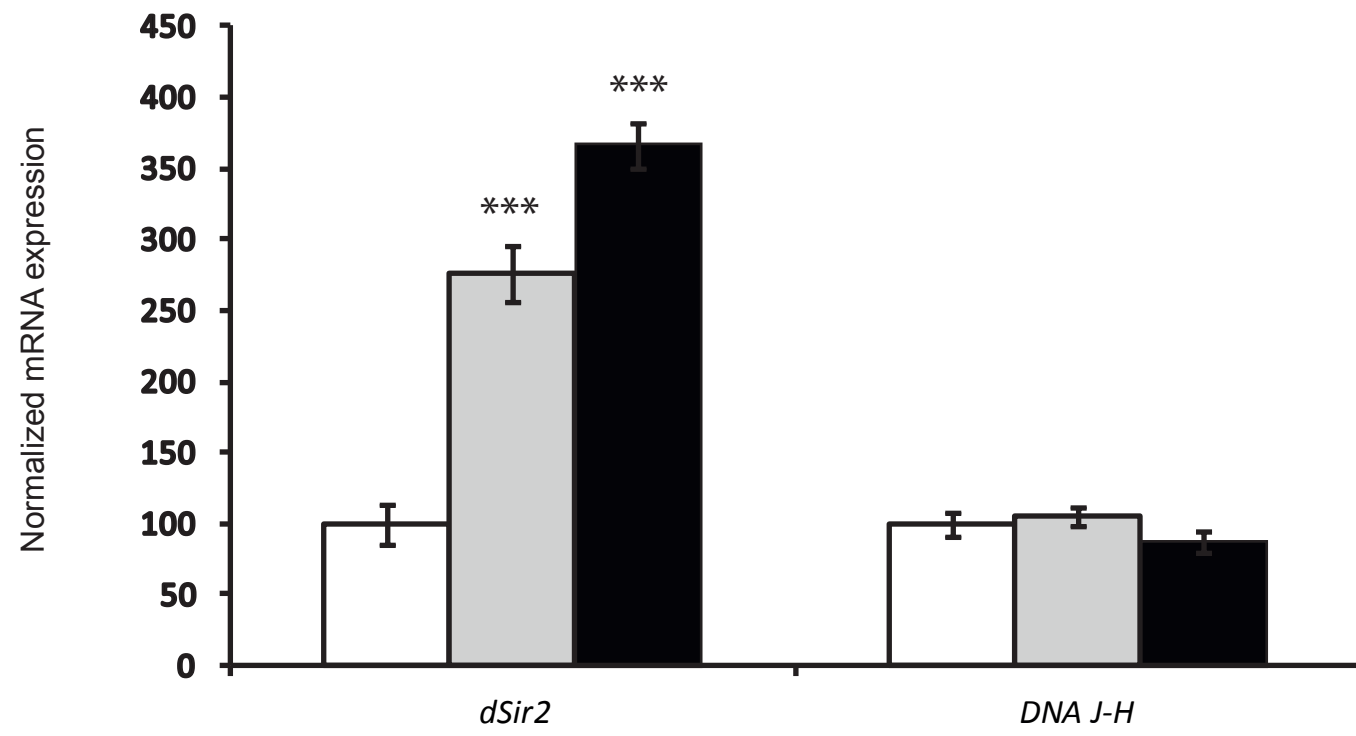


SUPPLEMENTARY FIGURE 9

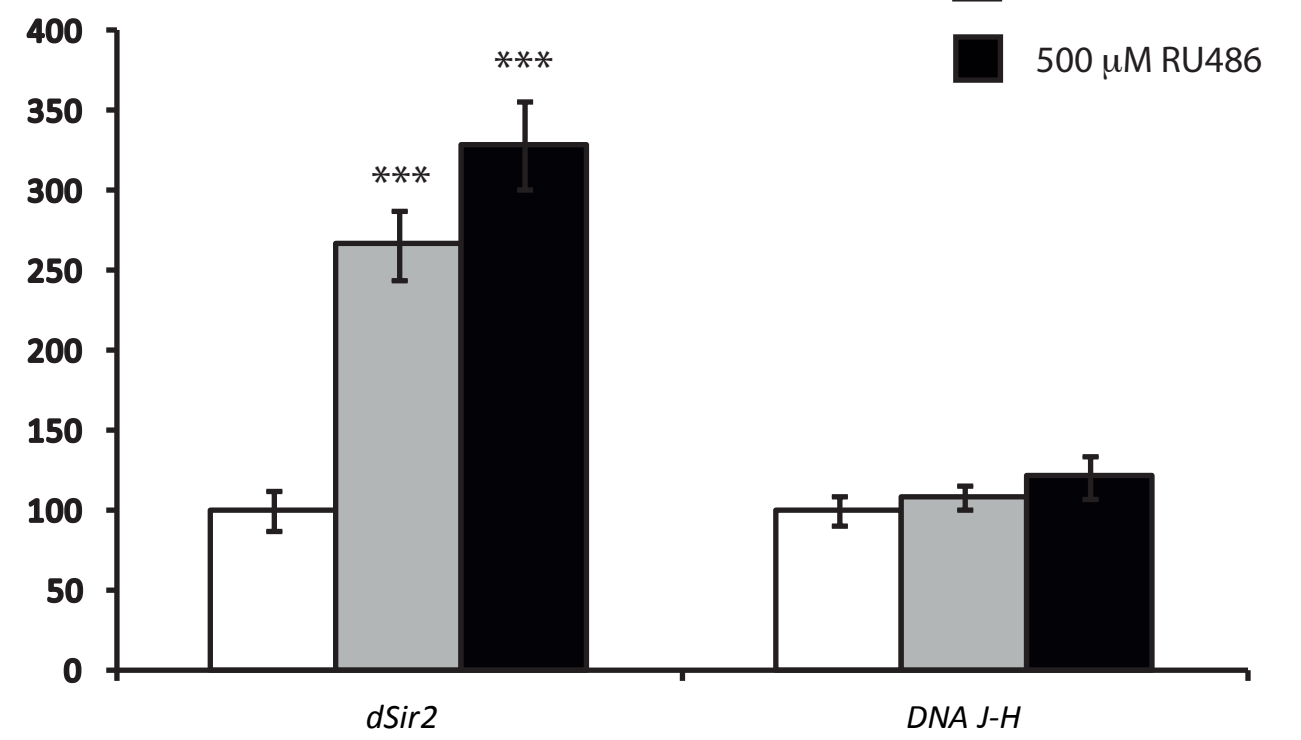


SUPPLEMENTARY FIGURE 10

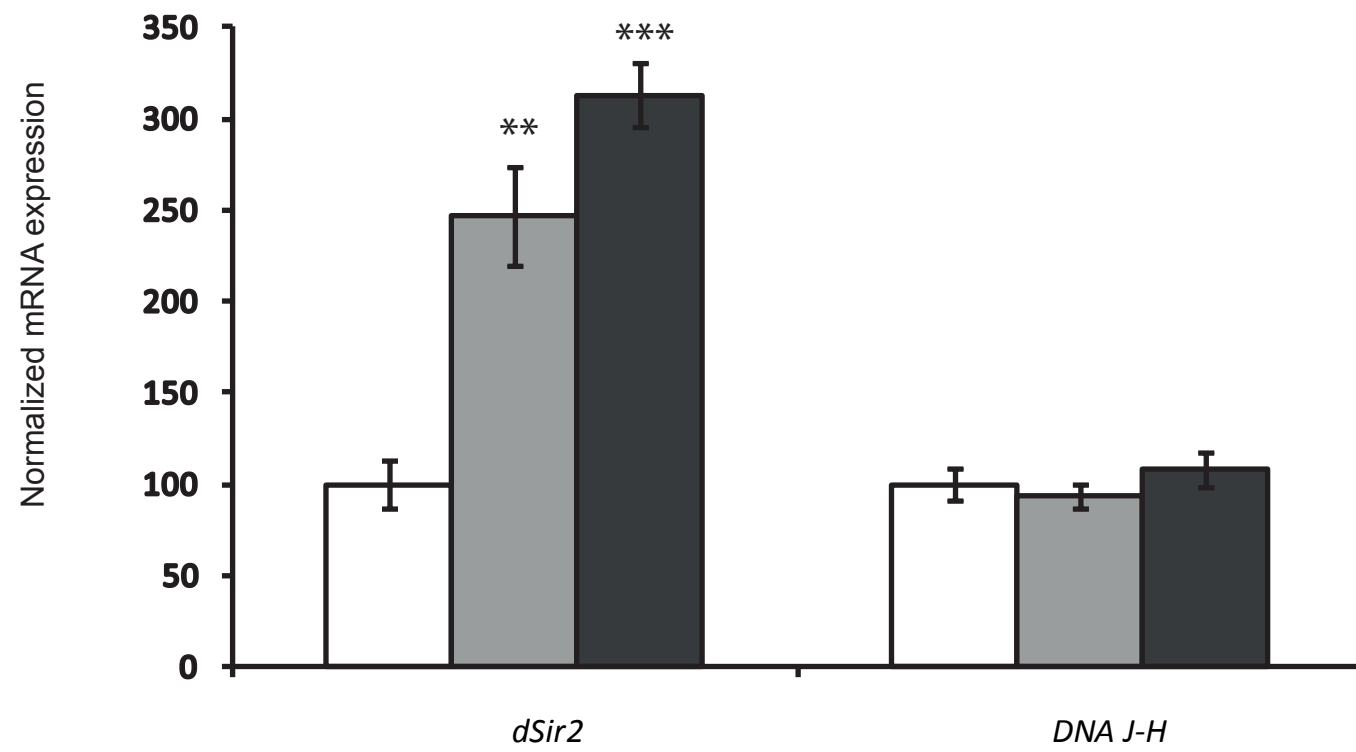
pSw-S₁106-Gal4>Sir2^{EP2300}
(Fatbody)



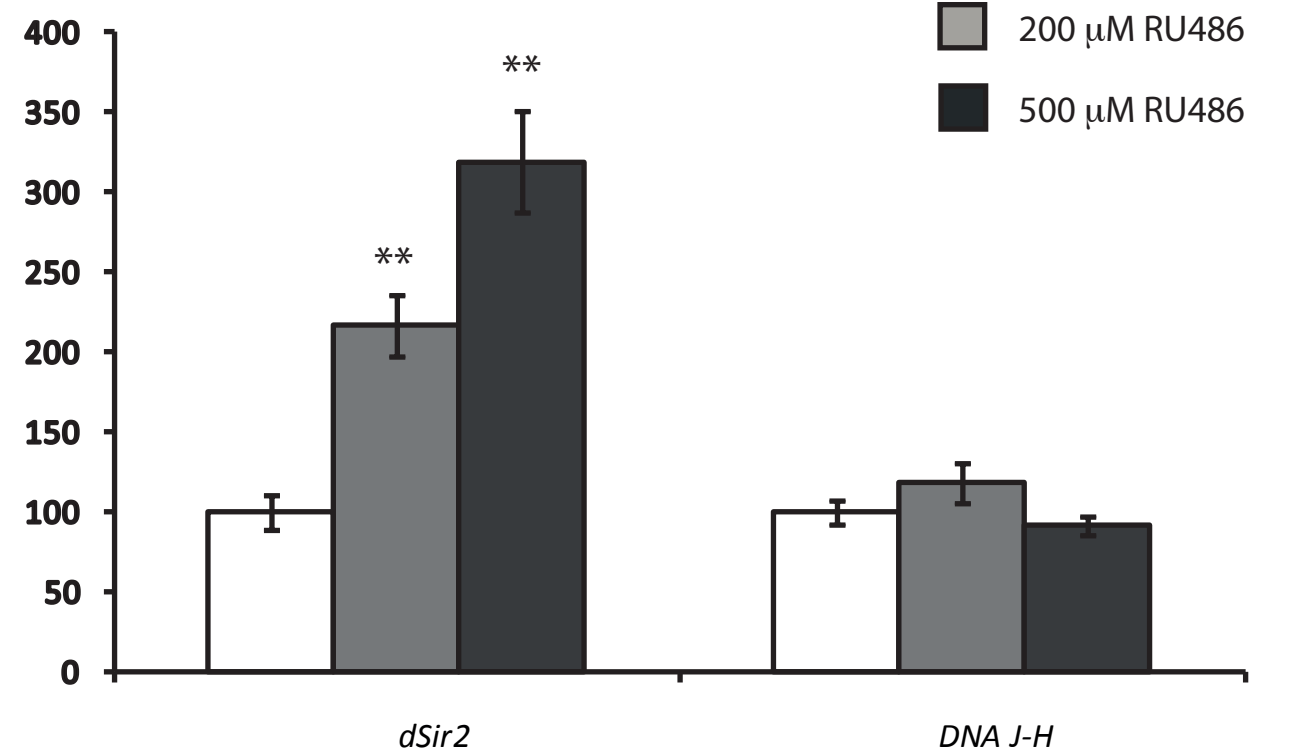
pSw-MHC-Gal4>Sir2^{EP2300}
(MuscleS)



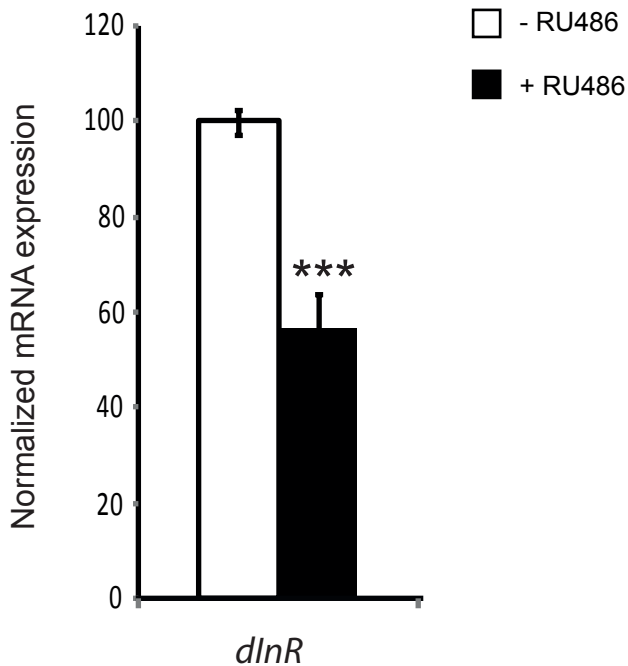
pSw-S₁106-Gal4>Sir2^{EP2384}
(Fatbody)



pSw-MHC-Gal4>Sir2^{EP2384}
(MuscleS)



pSw-MHC-Gal4>Sir2^{RNAi(23201)}
(Muscles)



SUPPLEMENTARY FIGURE 12