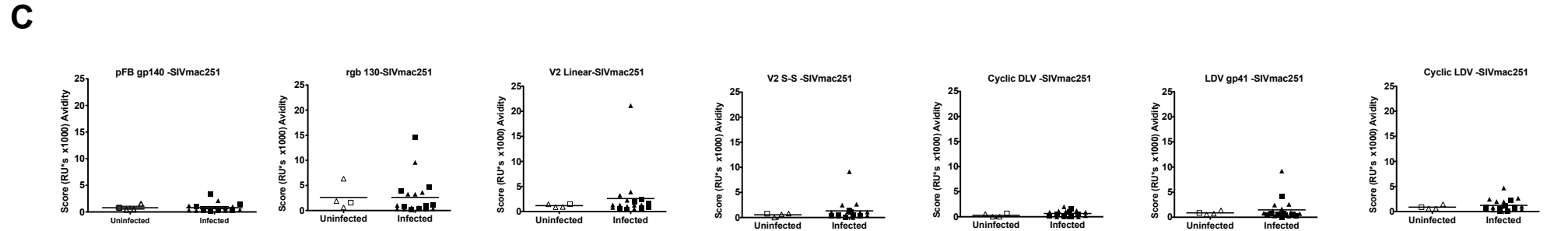
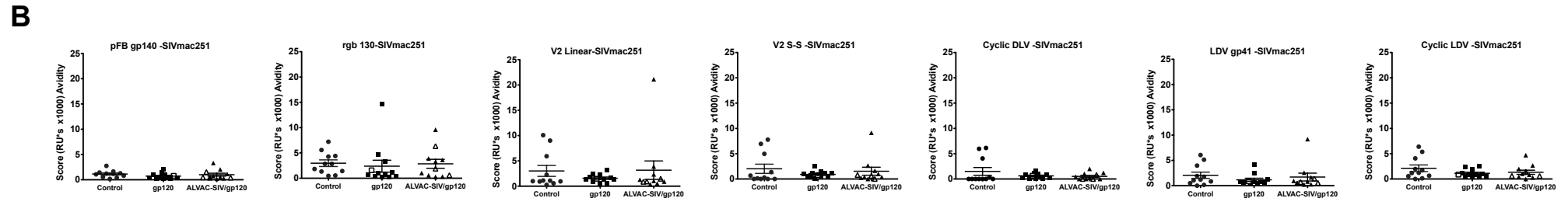


# Supplementary Fig 1

- A**
- 10-24 SIV mac251 V2 (linear): KRDKTKEYNETWYSTDLVCEQGNSTDNESR
- 10-23 SIV mac251 V2 (S-S disulfide): KRDKTKEYNETWYSTDLVCEQGNSTDNESRC
- 10-22 Cyclic DLV (SIV mac251): CTDLVC
- 10-25 SIV mac251 LDV (gp41): LAGIVQQQQLLDVVKRQQELLRLc
- 10-21 Cyclic LDV (control): CWLDVC



**Supplementary Figure 1:** Sequence of the peptide used in the Resonance Plasmon assay on mucosal secretions. **(A).** Avidity IgG to the gp140 and gp130 Envelope proteins of SIV<sub>mac251</sub>, to the SIV<sub>mac251</sub> mucosal **(B)** V2-linear, DLV, V2 S-S peptides, cyclic DLV, LDV and cyclic LDV SIVmac251 peptides. **(B).** Avidity of mucosal IgG to the same peptide used in B in uninfected and SIV-infected macaques **(C).**