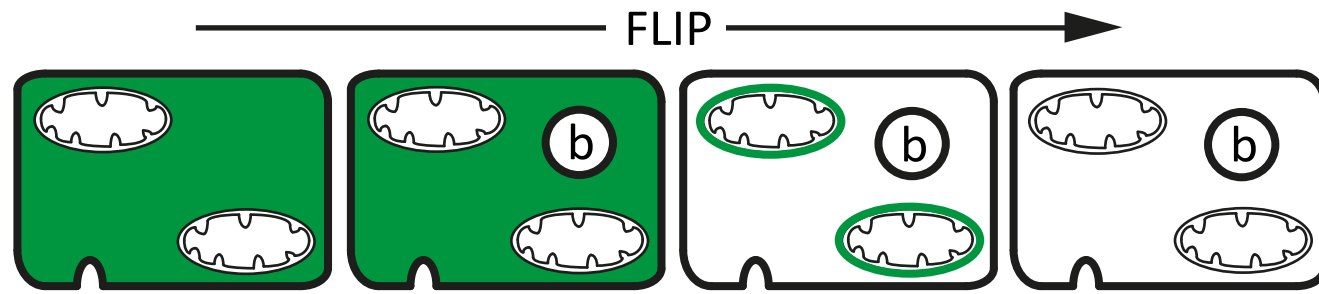
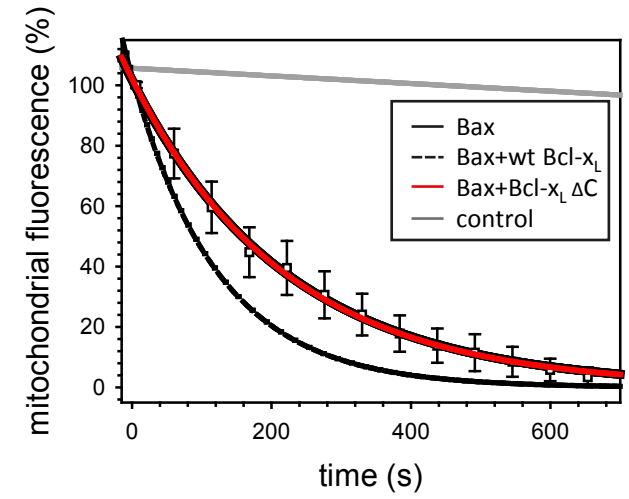


Figure 1.

A



C



B

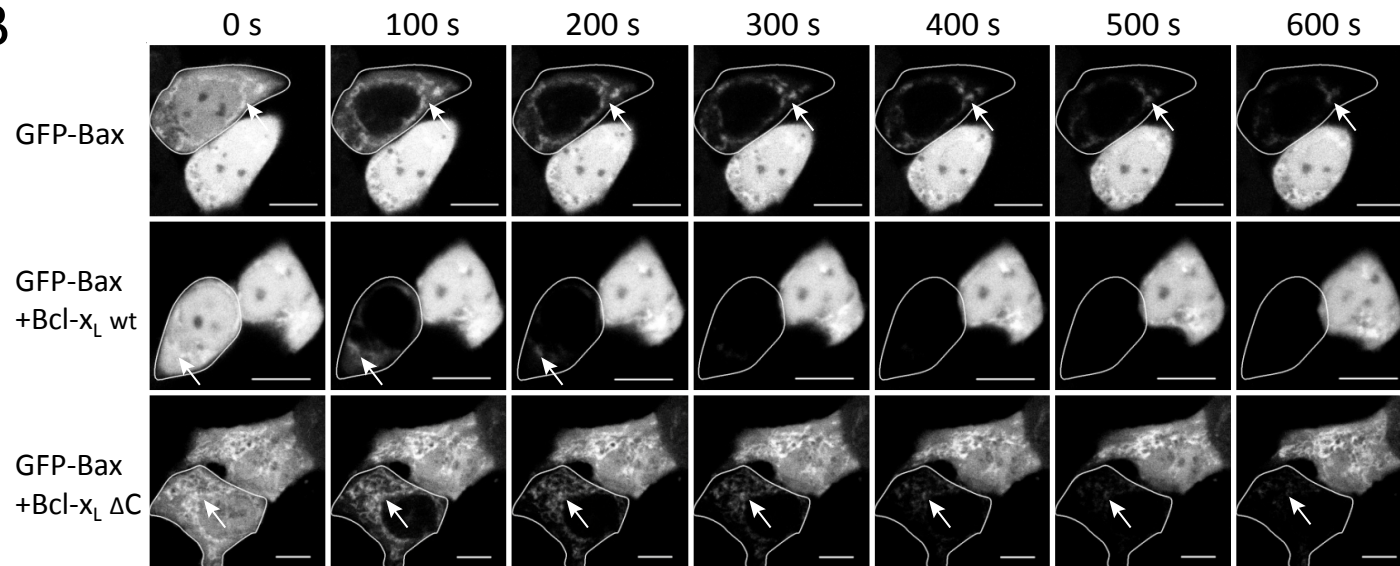
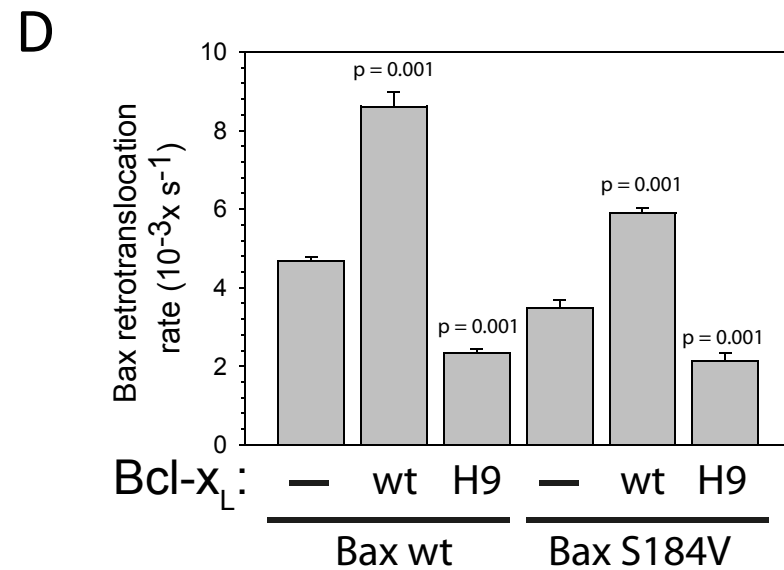
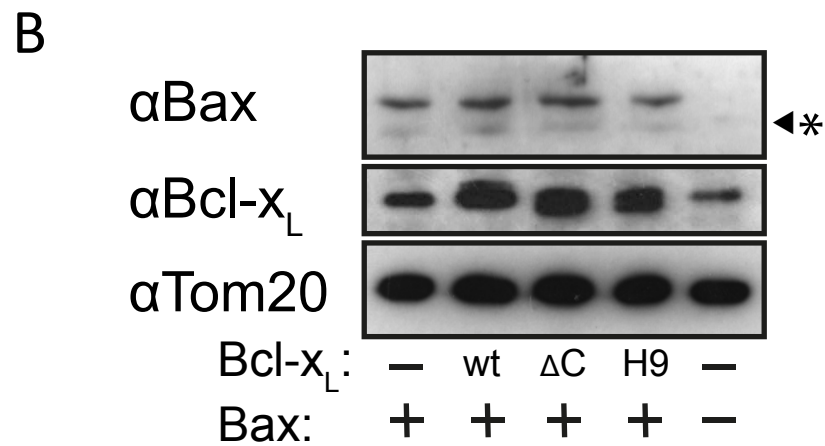
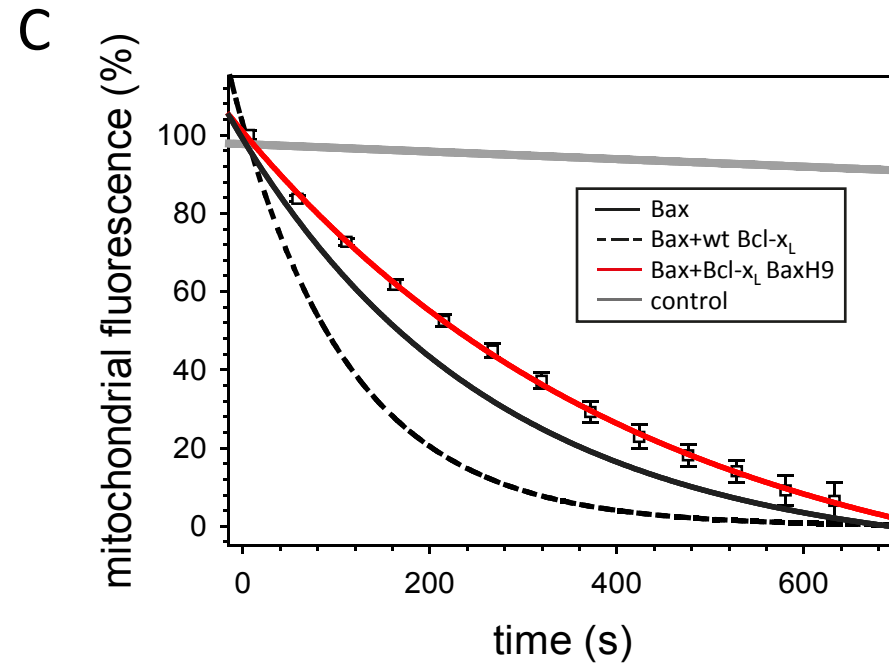
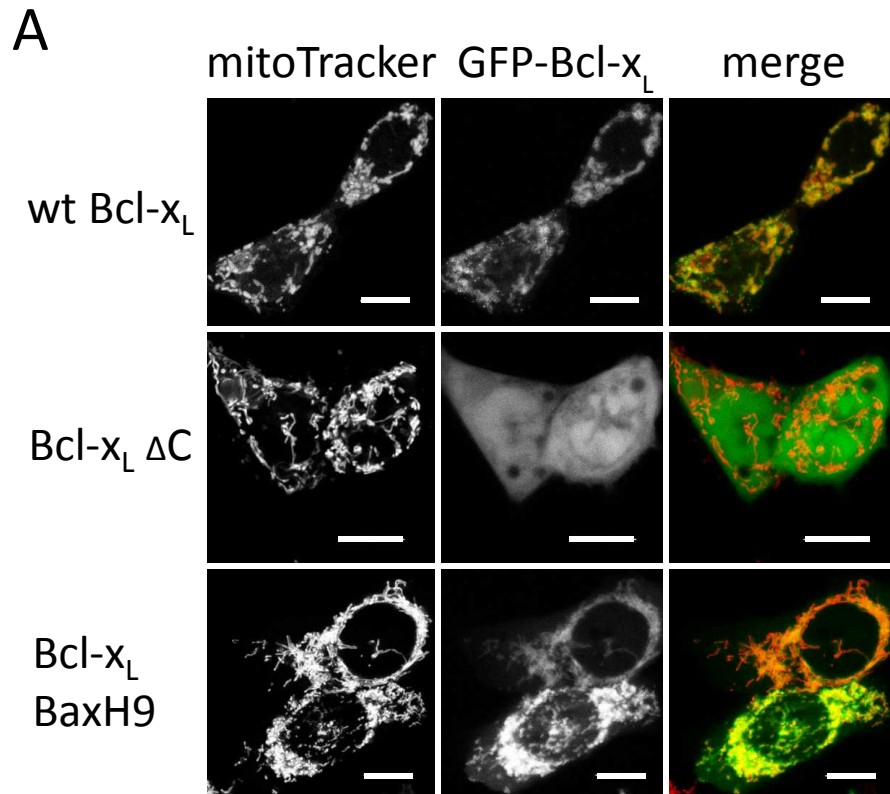


Figure 2.



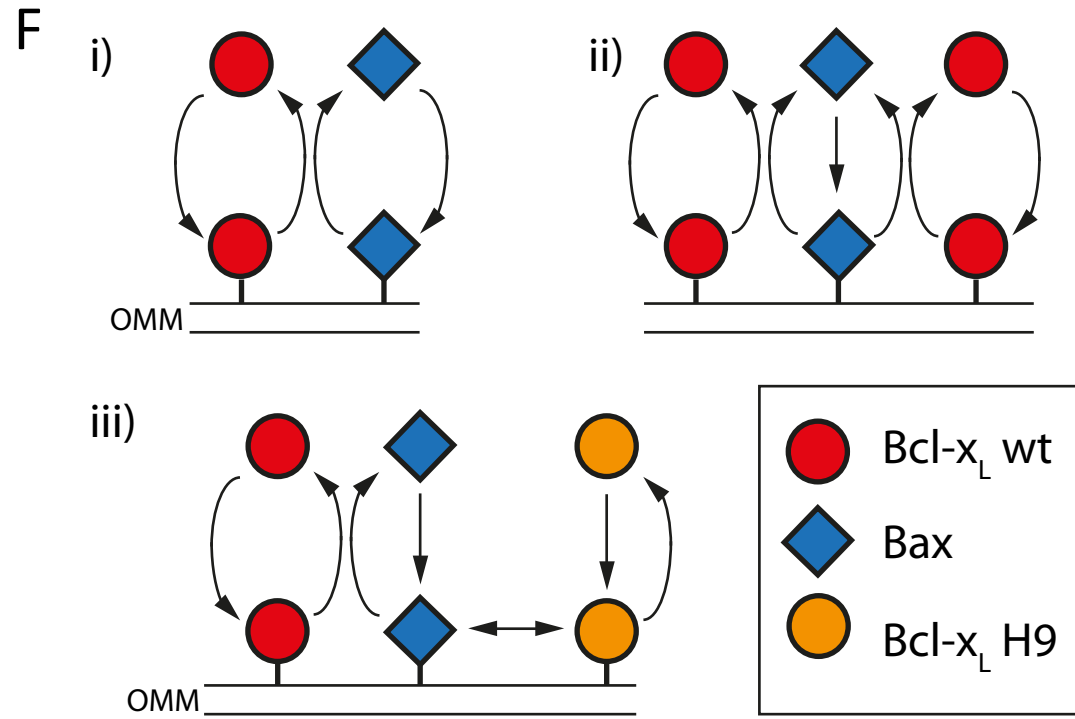
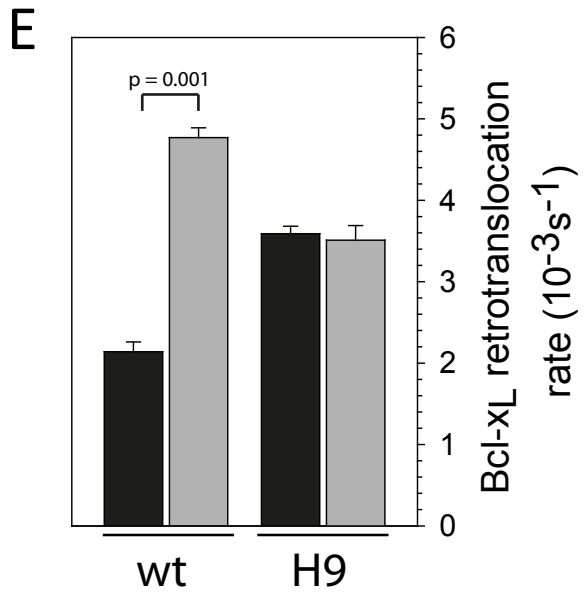


Figure 3.

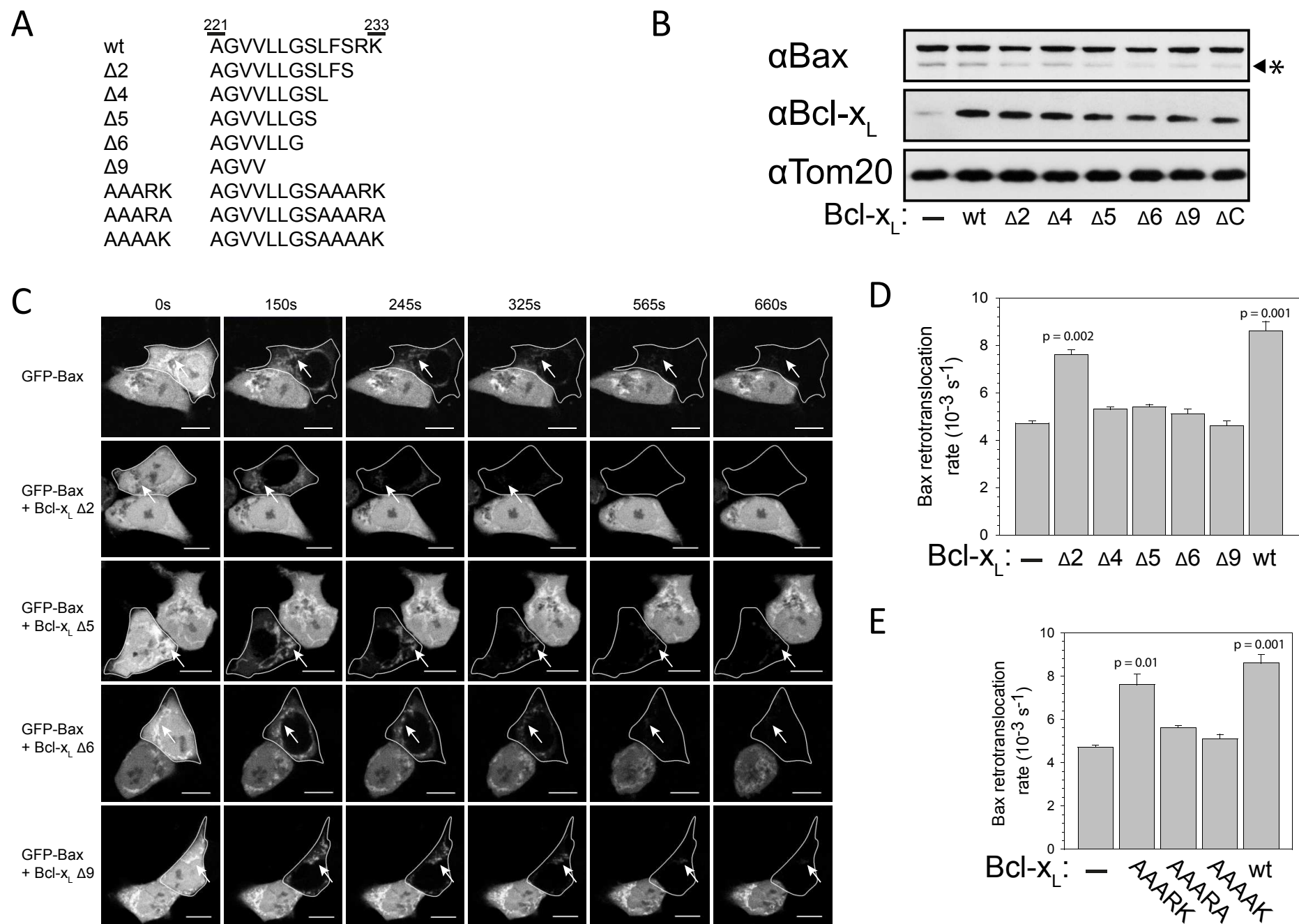
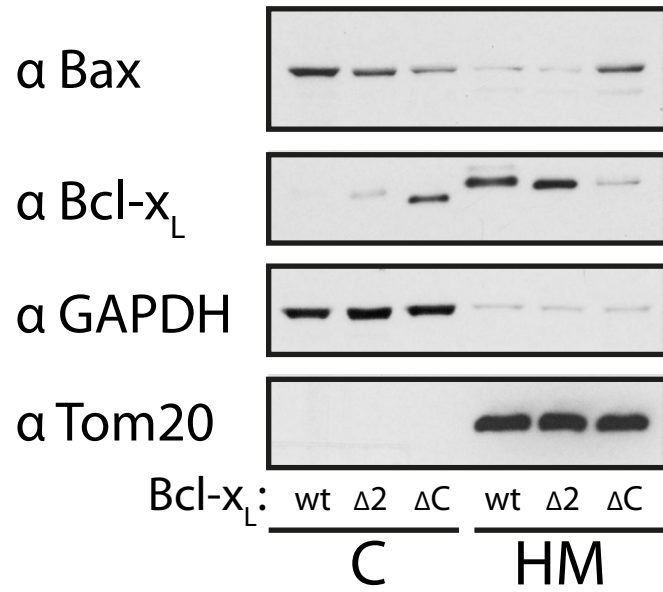
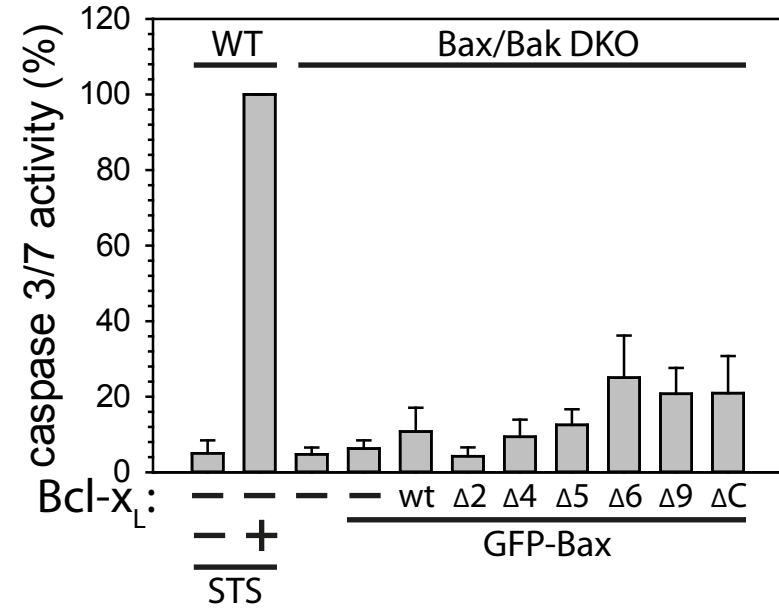


Figure 4.

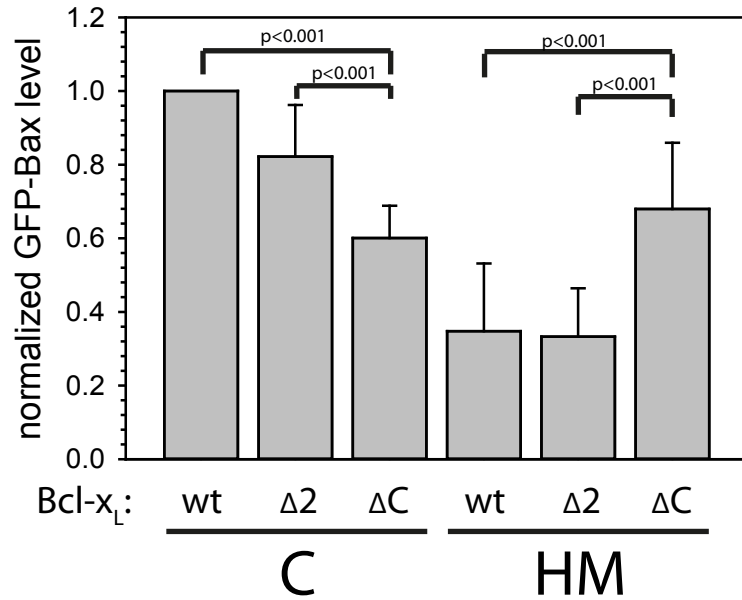
A



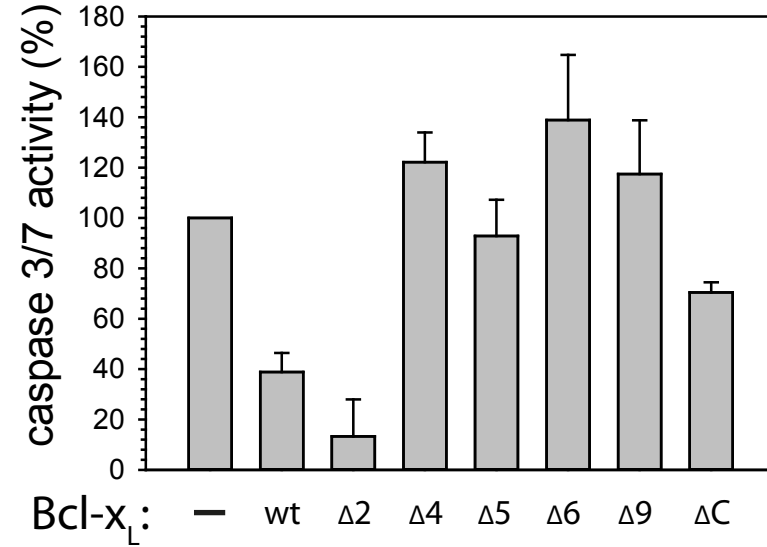
C



B



D



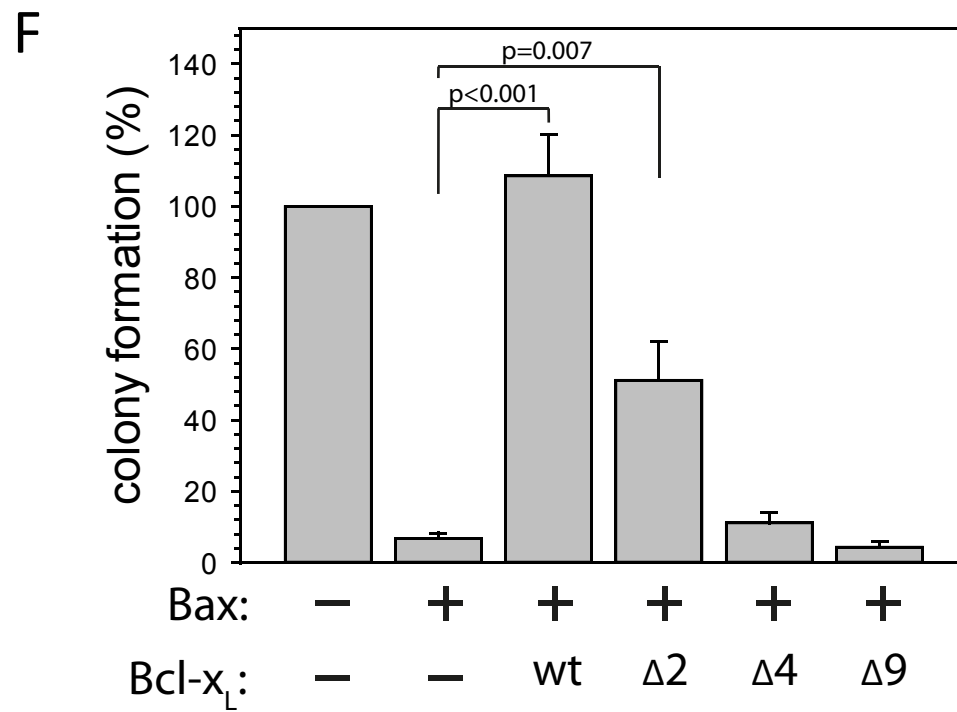
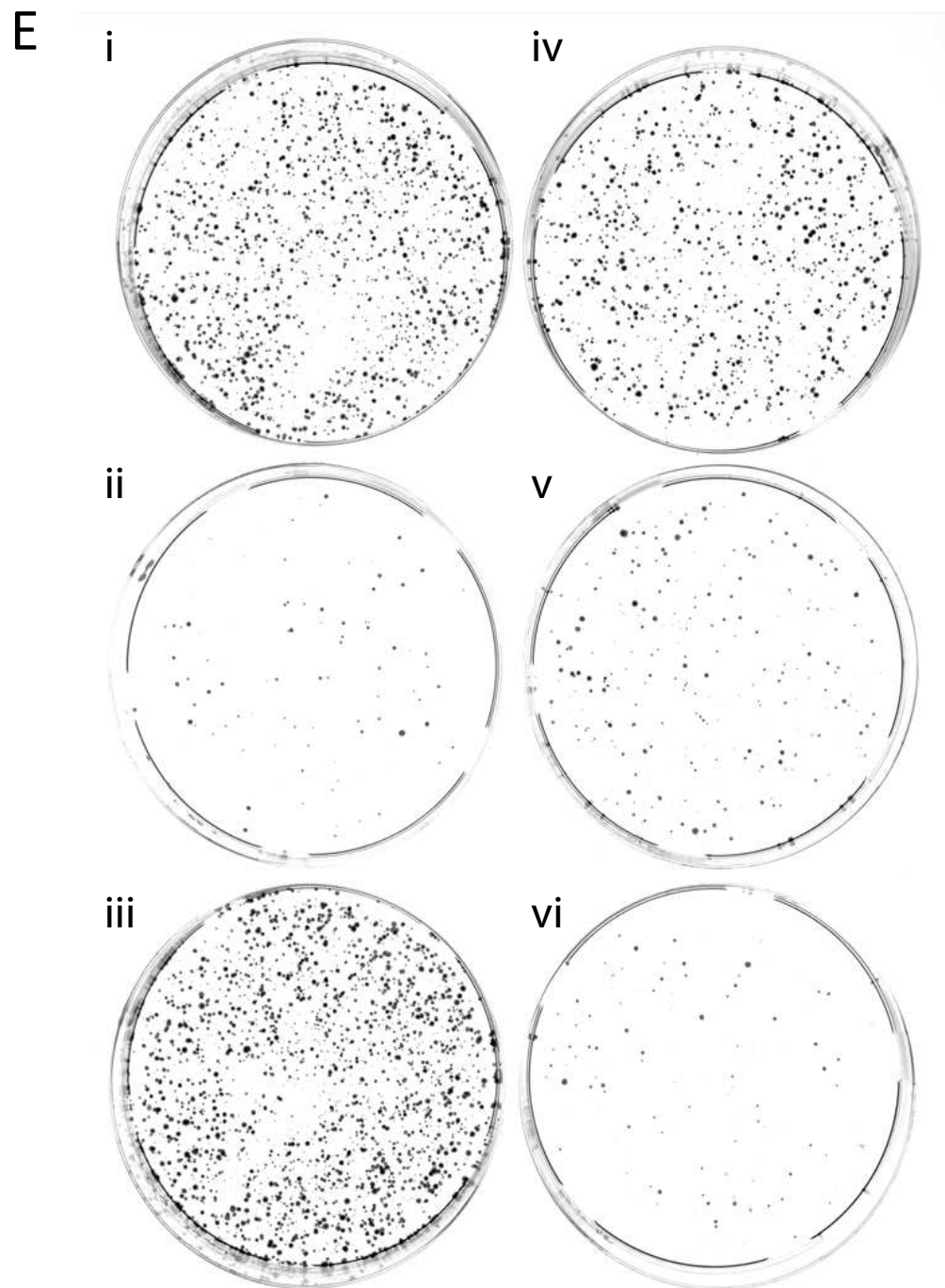


Figure 5.

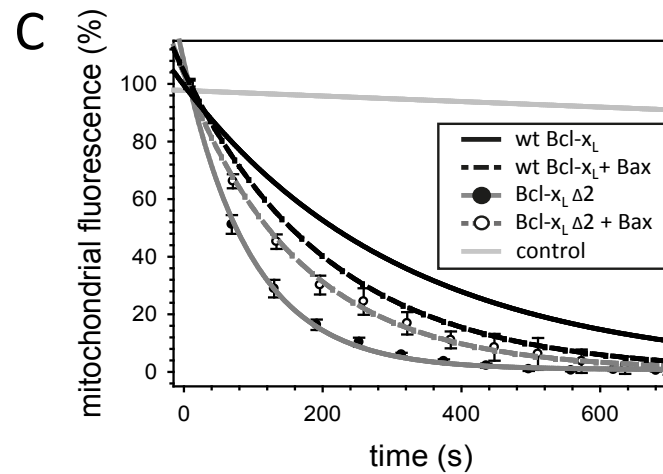
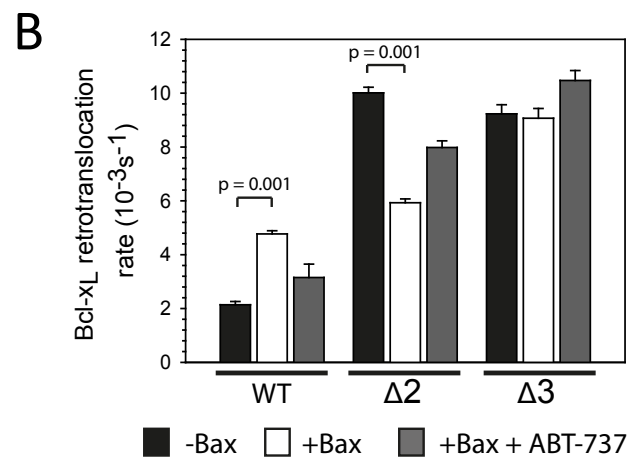
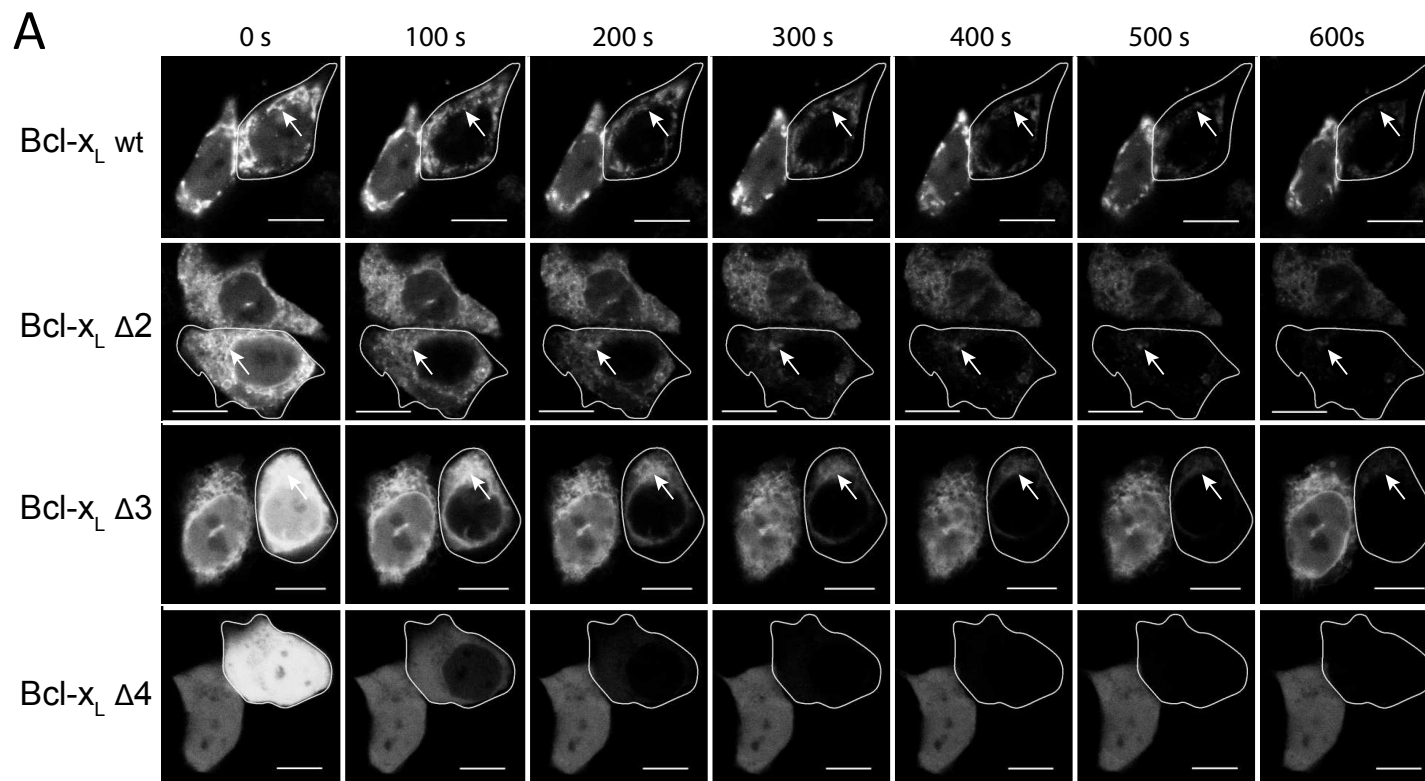
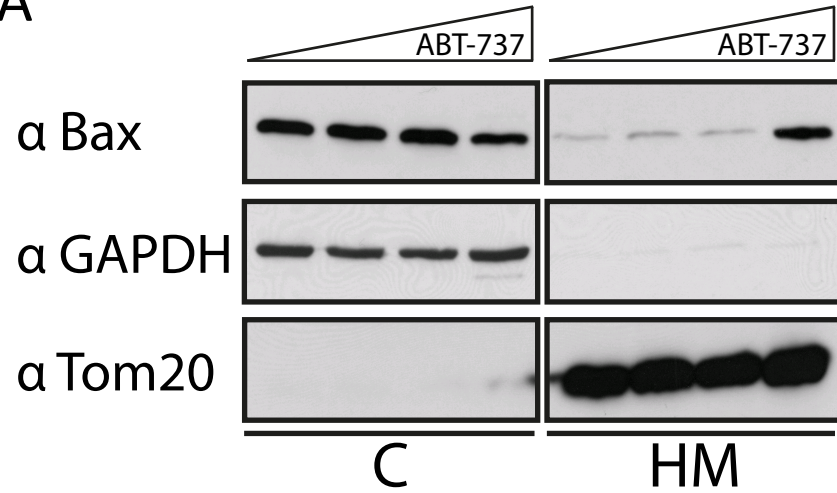
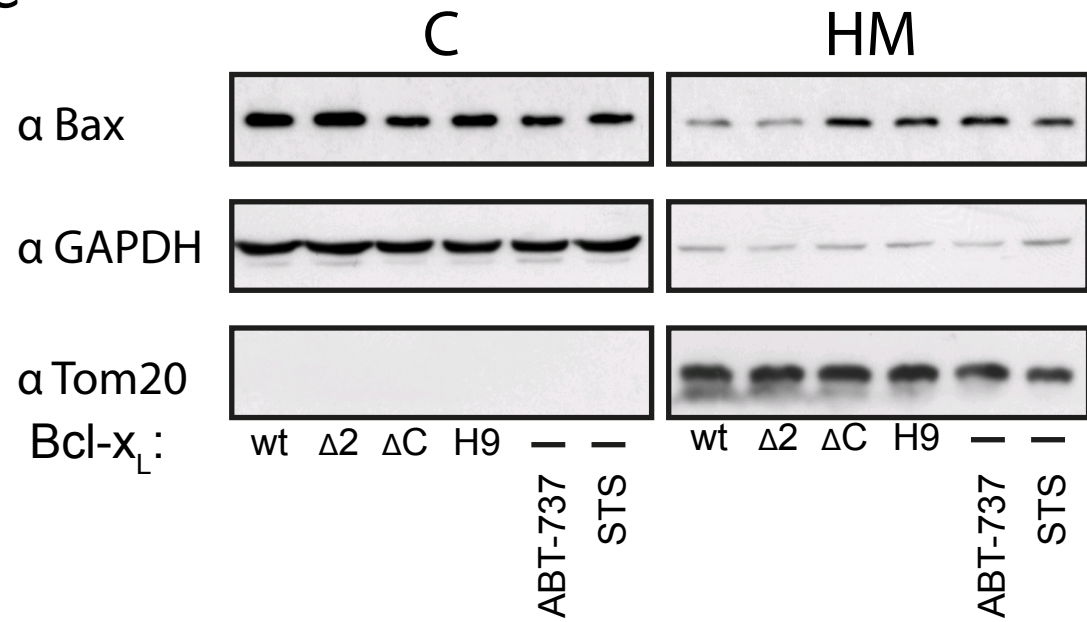


Figure 6.

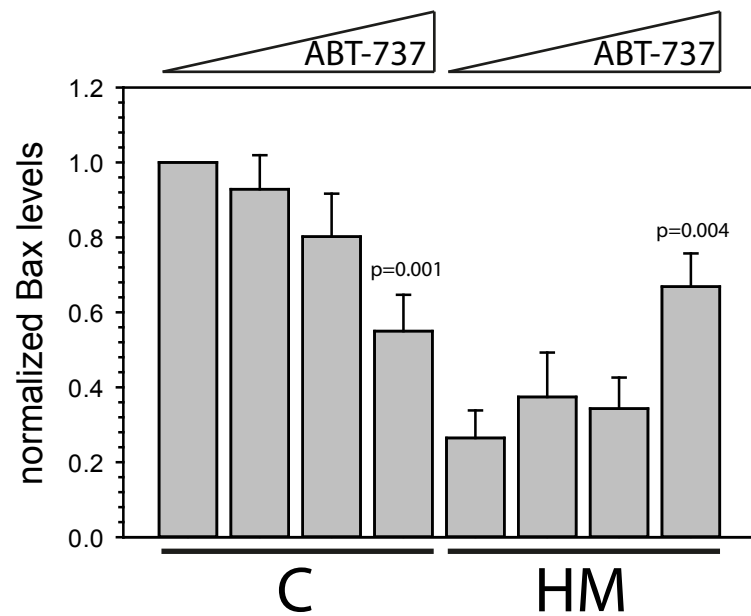
A



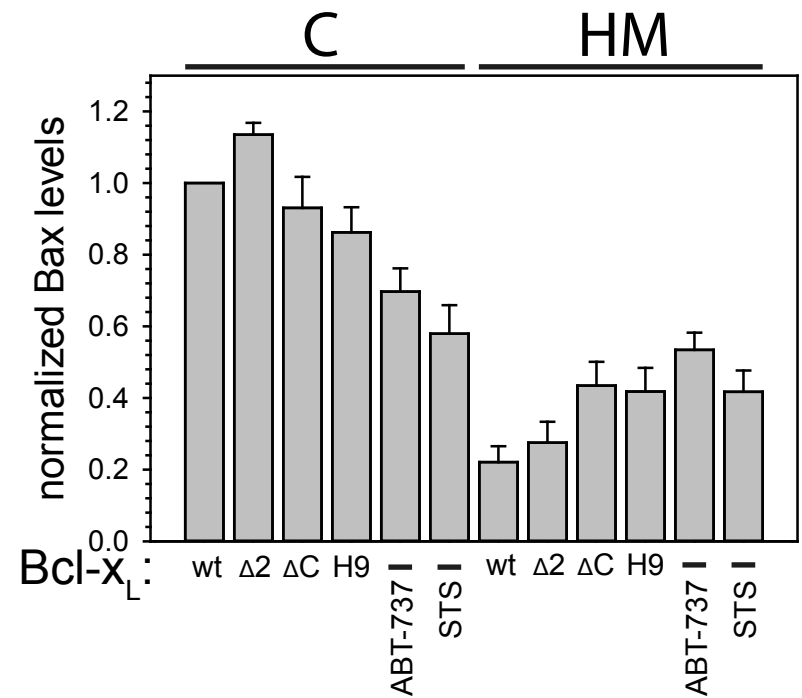
C



B



D



E

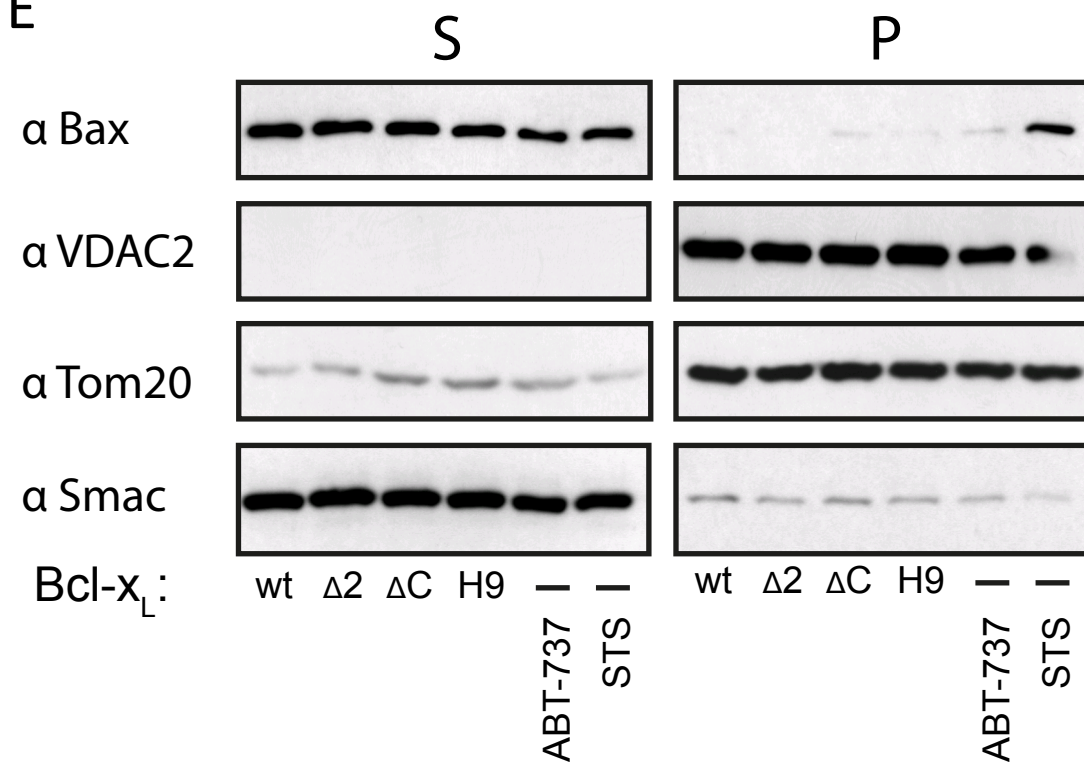
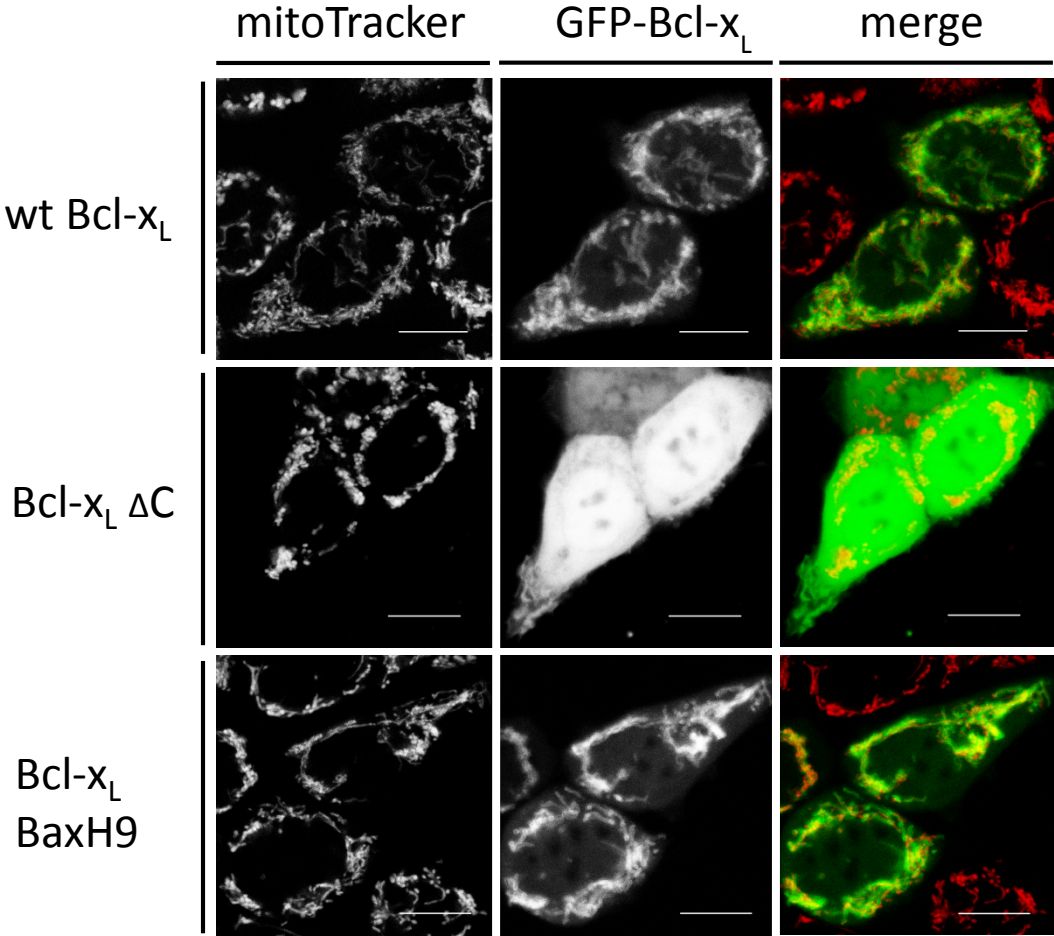


Table S1. Bcl-x_L C-terminal deletions diminish Bax retrotranslocation and inhibition

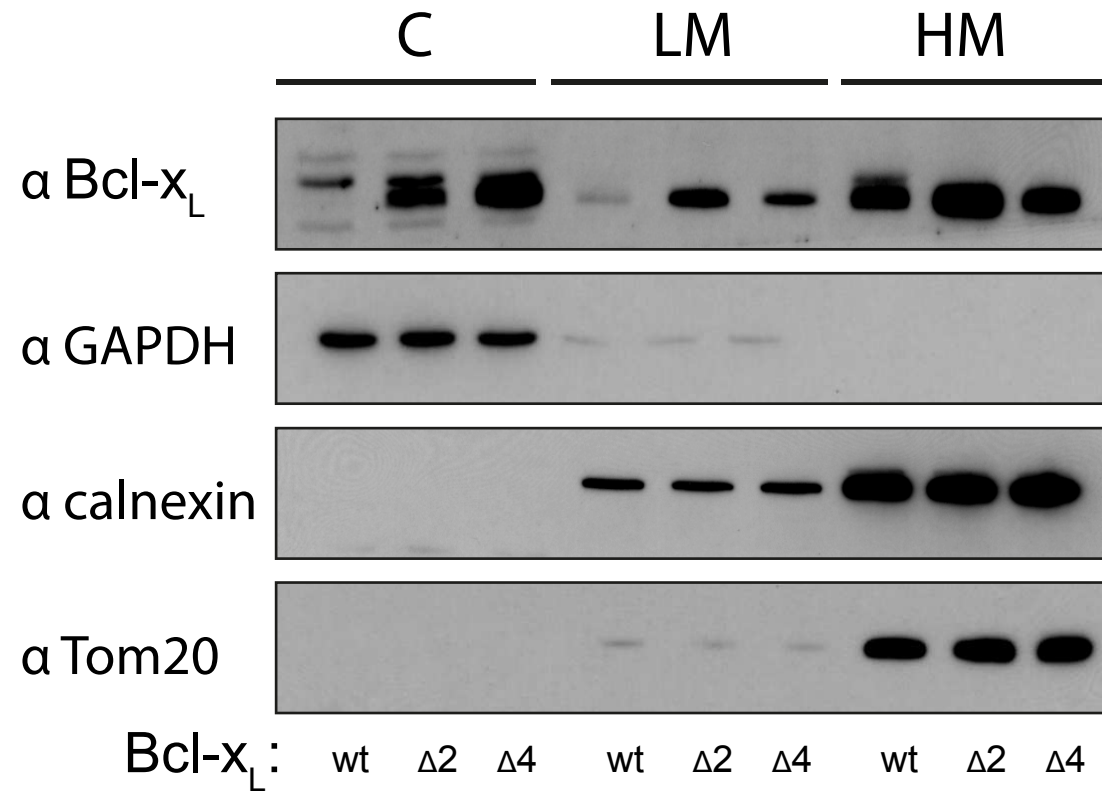
Bcl-x _L	Bax retro-translocation	inhibition of Bax activation	cell survival after STS treatment	mitochondrial localization
wt	++++	++++	++++	++++
Δ2	+++	++++	++	++
Δ4	+	-	-	++
Δ5	+	-	ND	-
Δ6	+	-	-	ND
Δ9	-	-	-	ND
ΔC	-	-	ND	ND
AAARK	+++	ND	ND	++ ¹
AAARA	+	ND	ND	++ ¹
AAARA	-	ND	ND	++ ¹

1 = see Jeong et al.²²

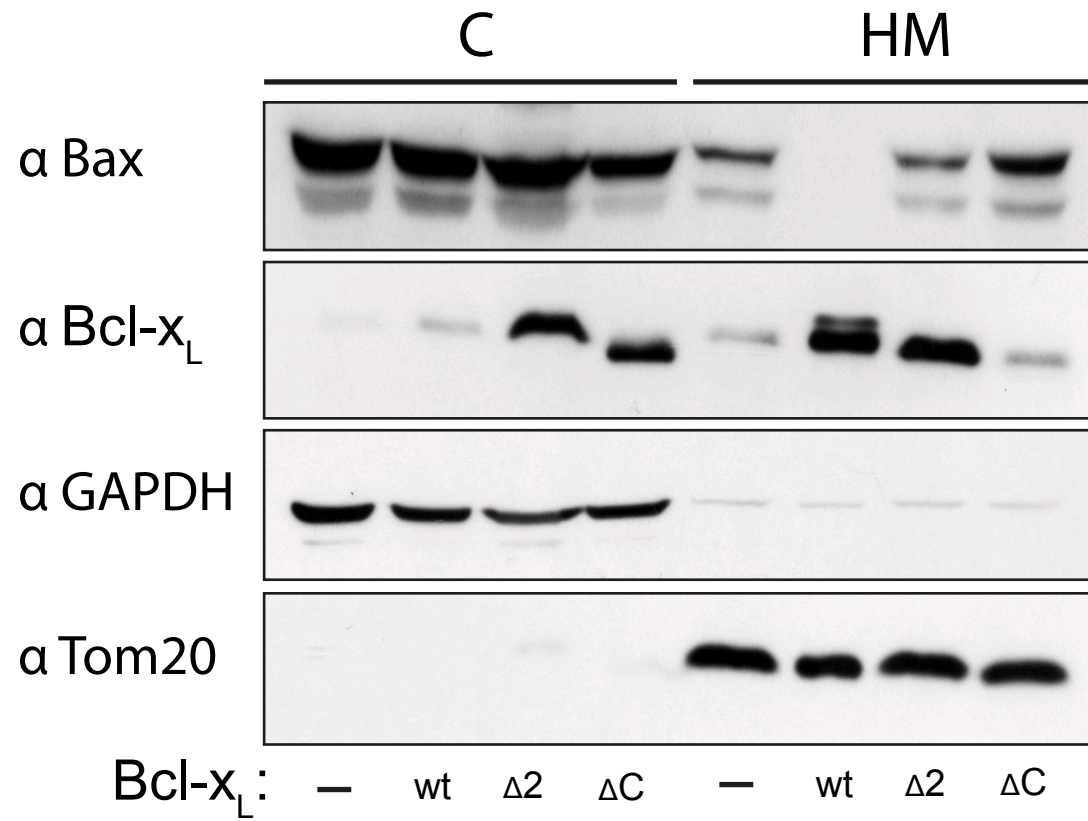
Supplementary Figure 1



Supplementary Figure 2



Supplementary Figure 3



Supplementary Figure 4

