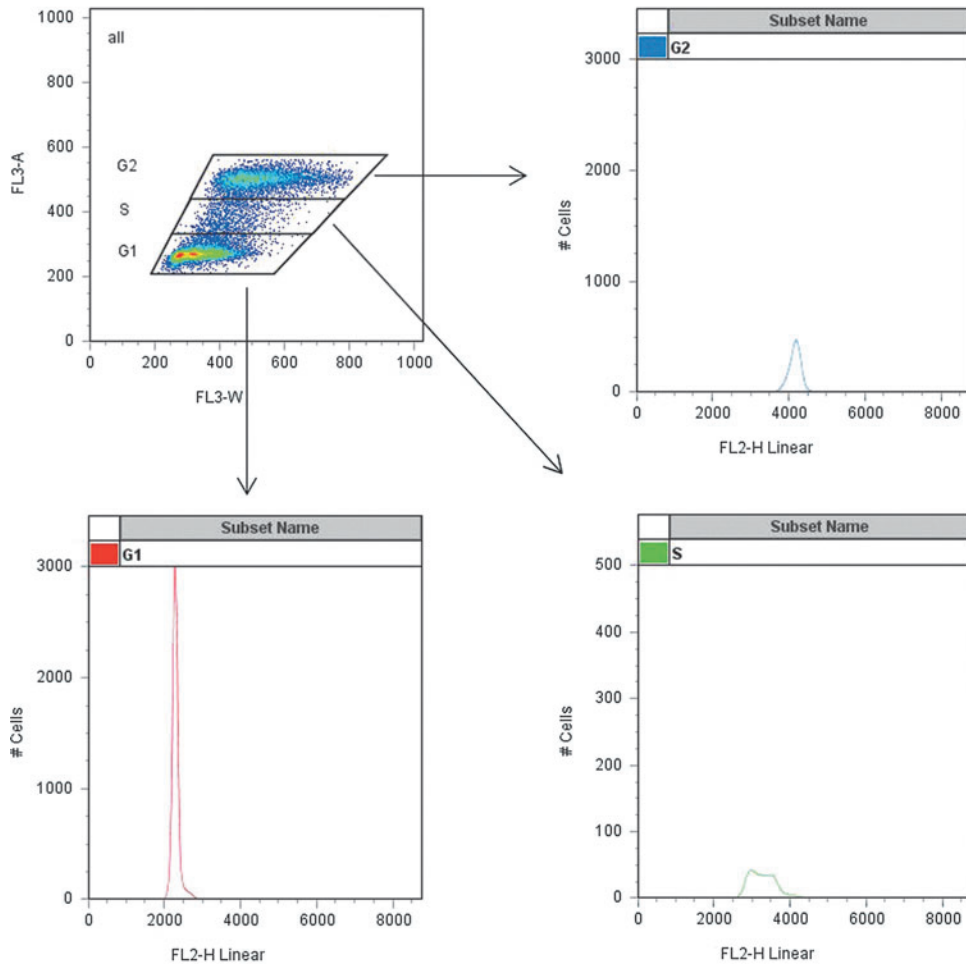
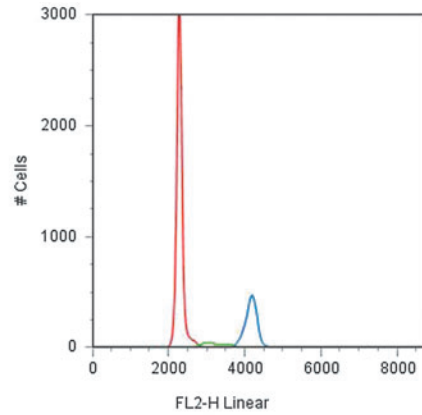


Supplementary Data

U-2 OS w/o cytostatics

	Subset Name	Count	Freq. of Parent
■	G2	5340	22,91
■	S	1169	5,02
■	G1	16787	72,03



SUPPLEMENTARY FIG. S1. Analysis of cell-cycle profile. Cells were synchronized by serum starvation for one day before incubation with cytostatic drugs. At 24 h and 48 h after treatment, cells were fixed in ethanol, stained with propidium iodide, and analyzed by flow cytometry. The percentage of cells in G1, S, and G2/M phase was determined by plotting cells as FL3-W versus FL3-A. Correct gate setting was verified by plotting respective cell populations as FL2-H versus cell counts. Overlay of the three populations yields a typical cell-cycle profile (top right panel). Analysis is shown exemplarily for untreated U-2 OS cells.