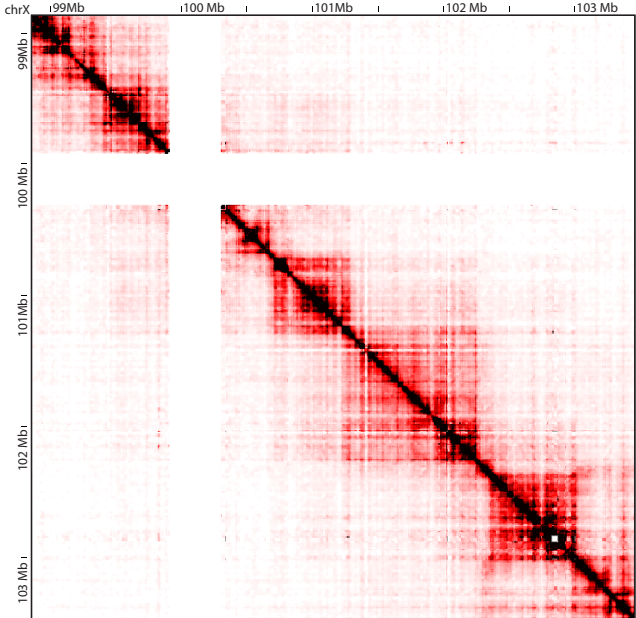
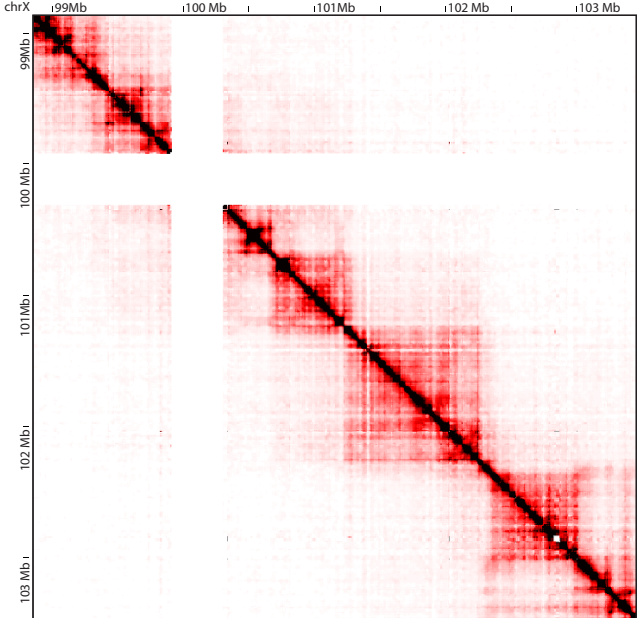


a

Undifferentiated mESCs

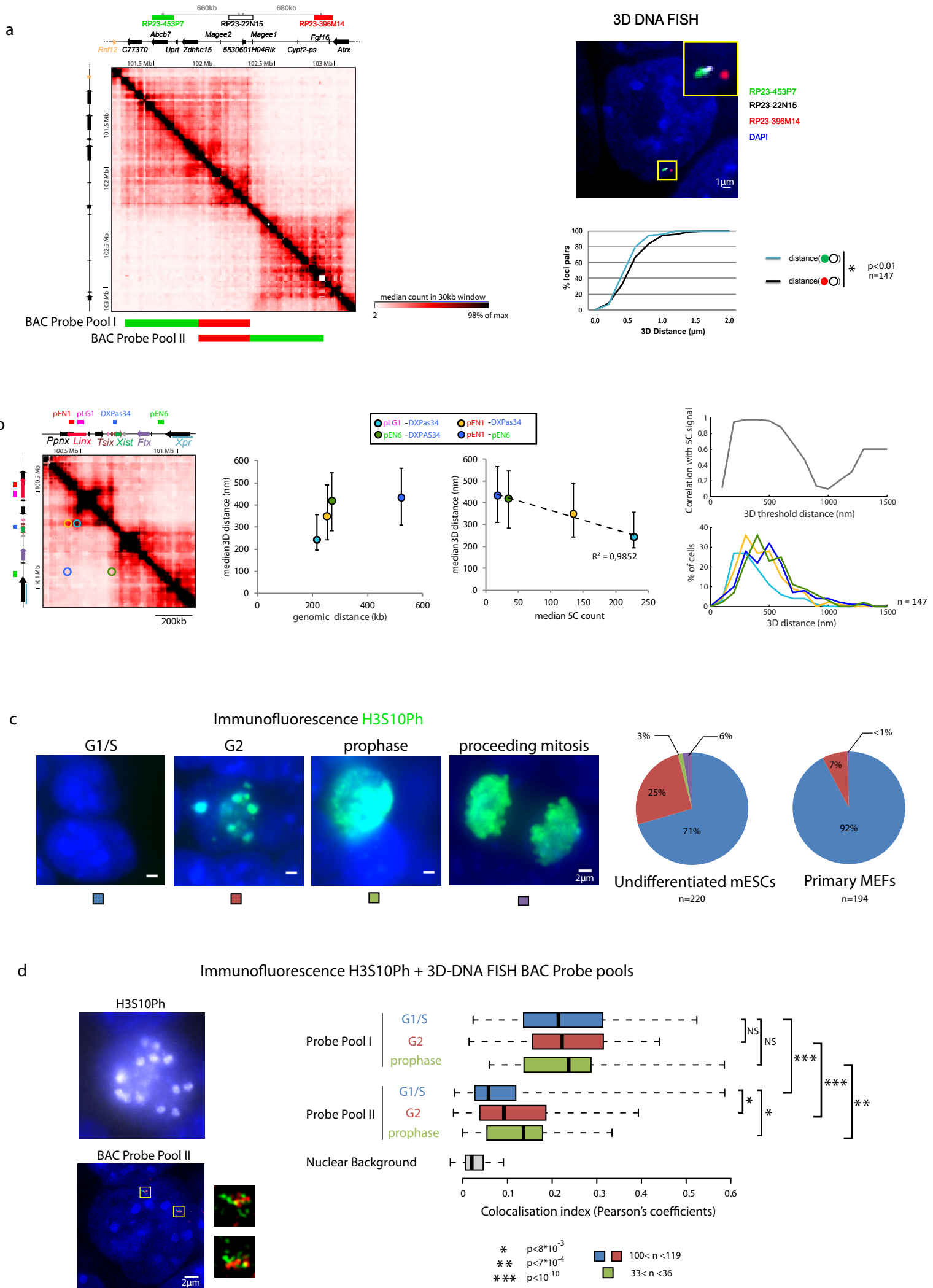
XY

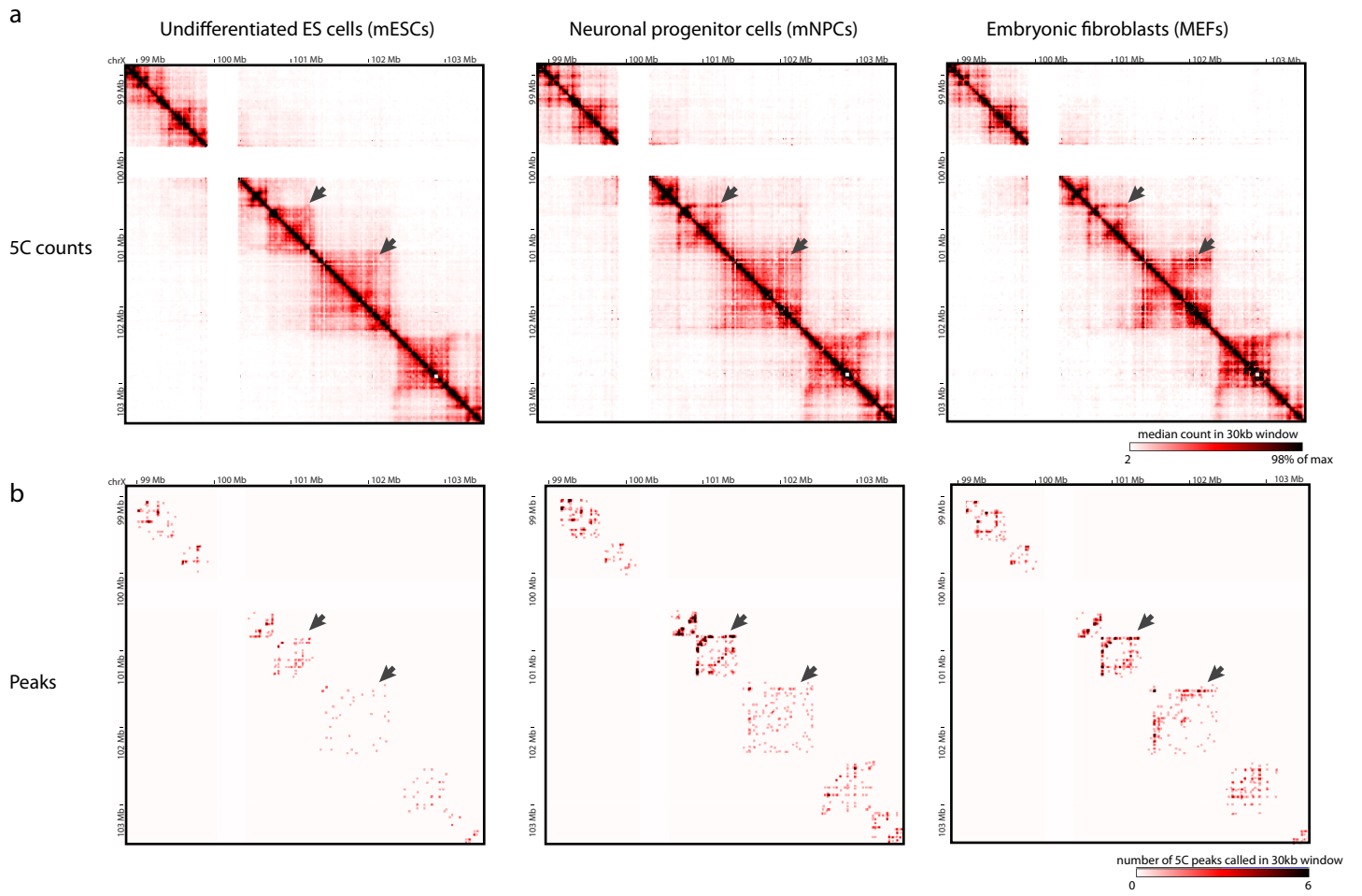
XX

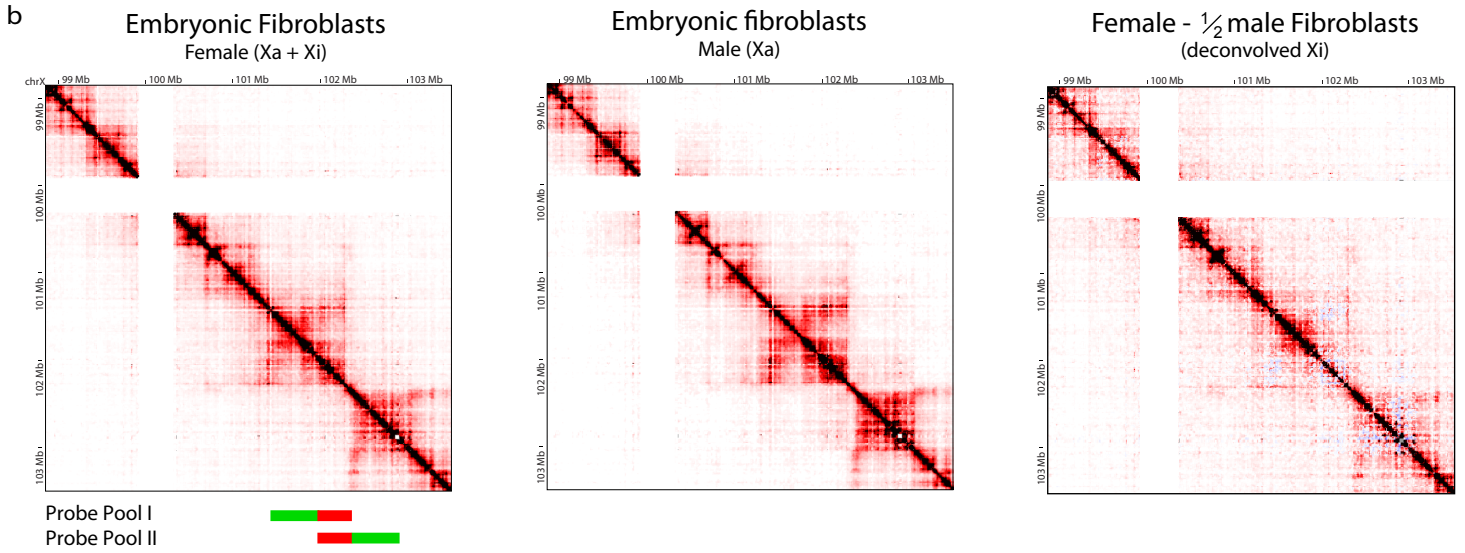
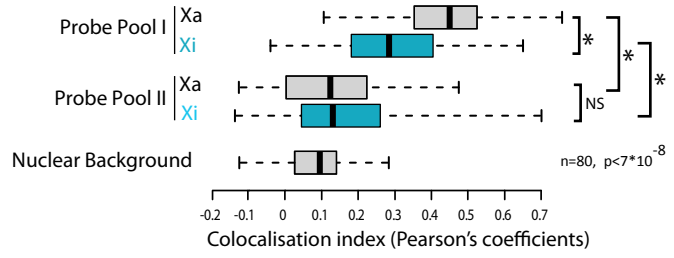
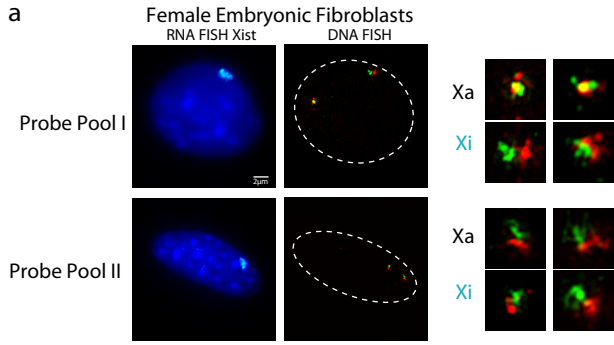


1Mb

median count in 30kb window
2 98% of max



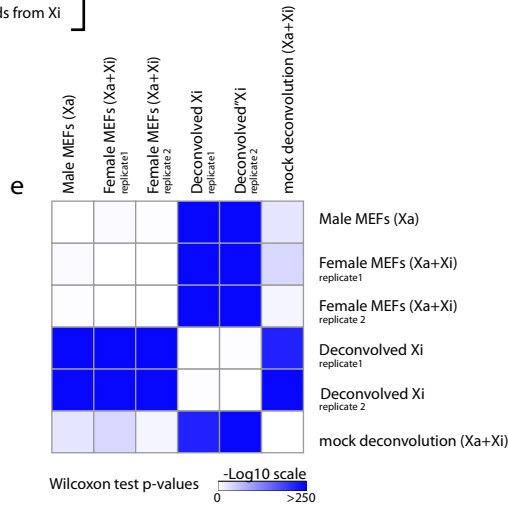
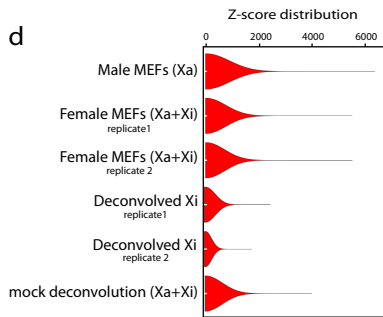




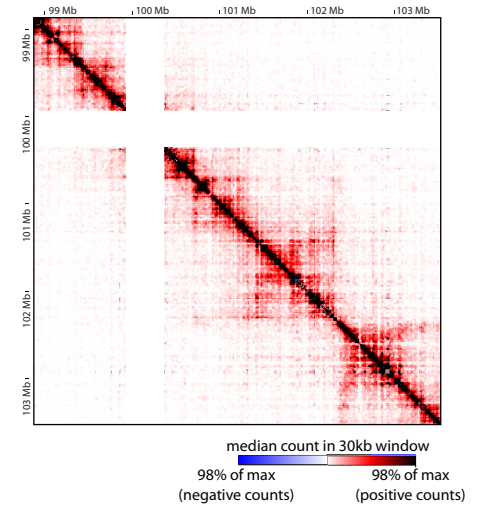
c

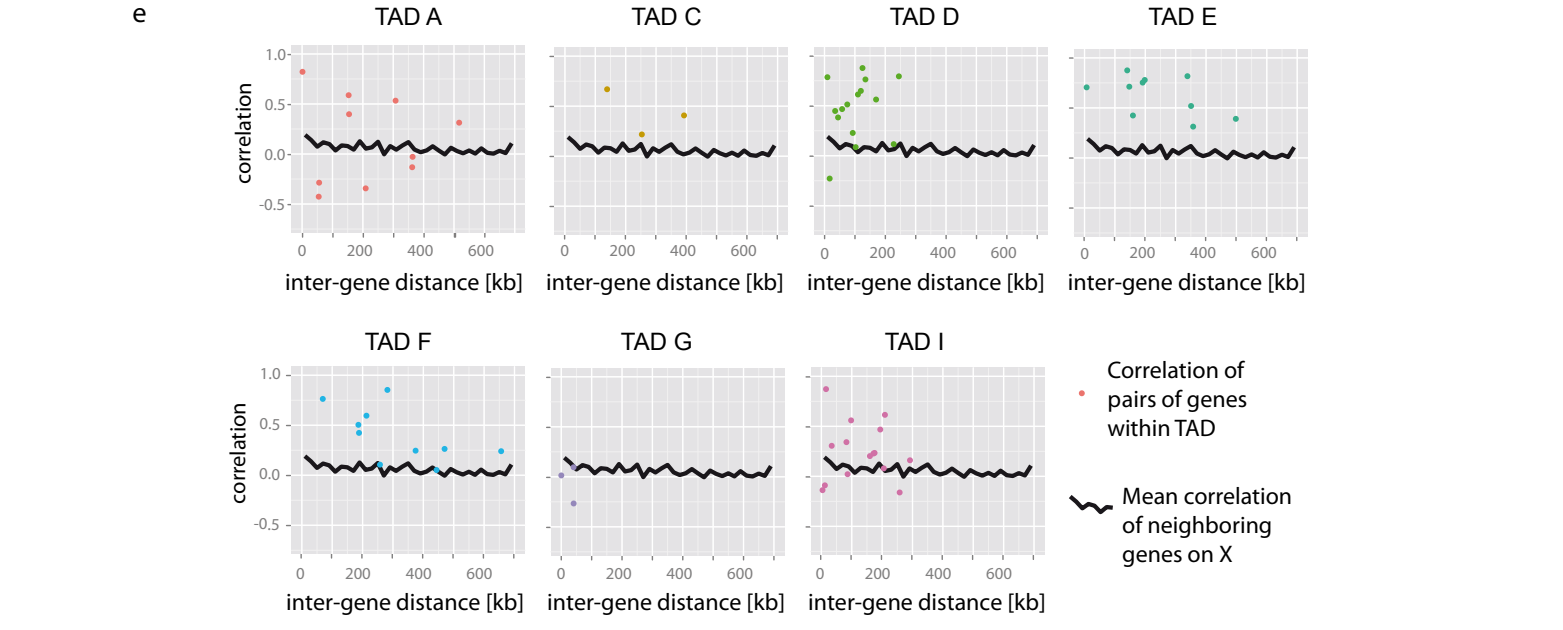
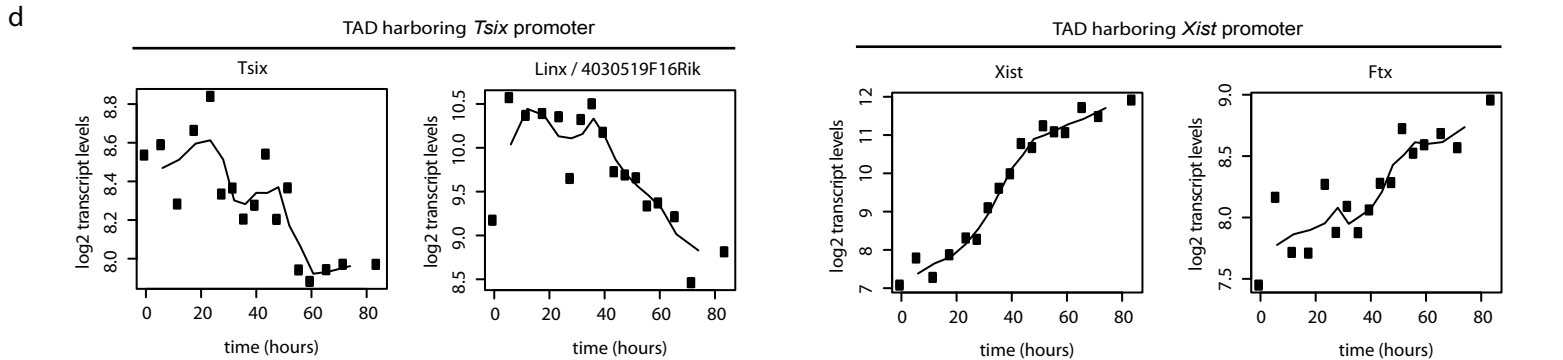
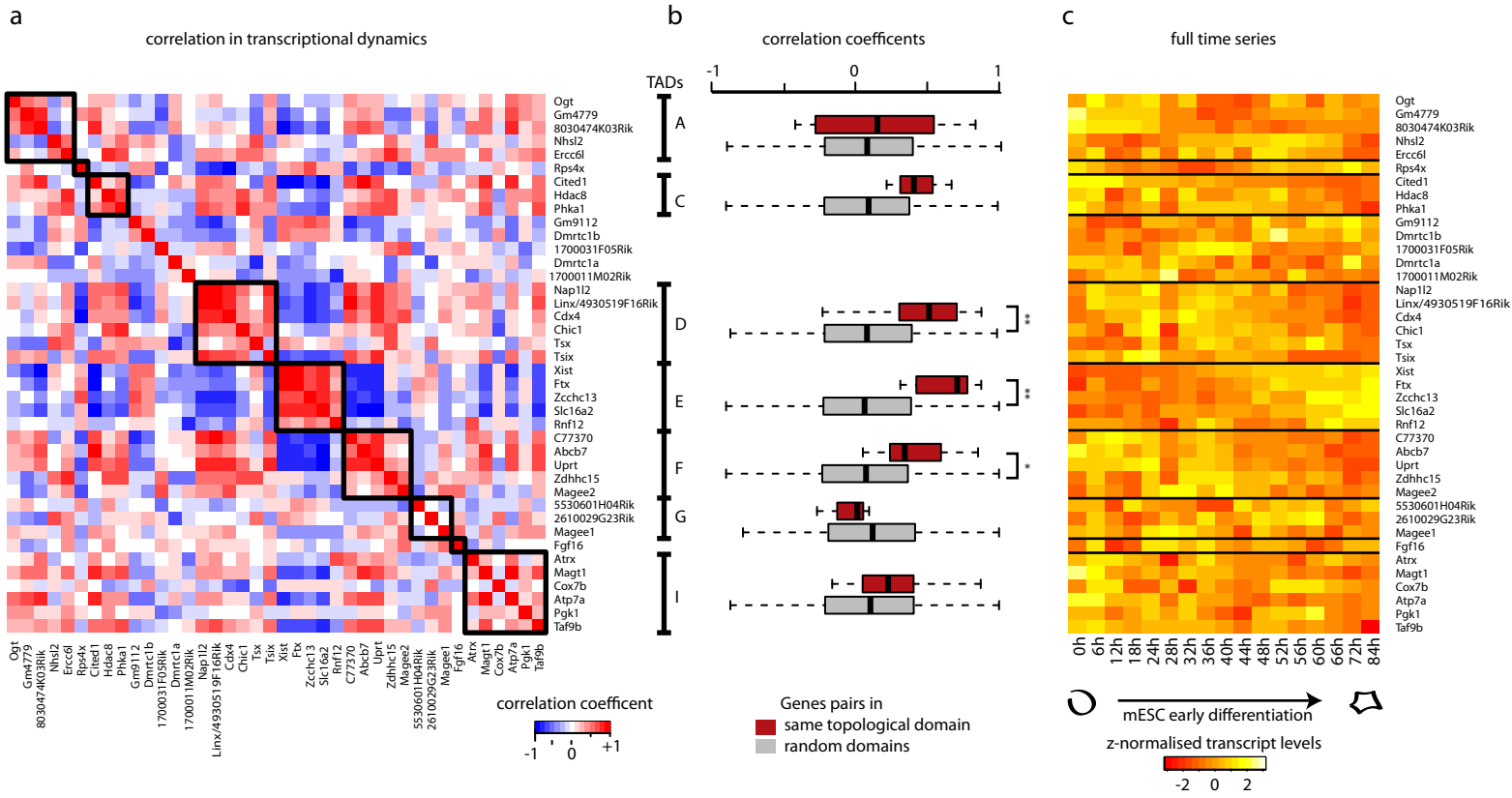
$$\begin{bmatrix} \text{Female} \\ 50\% \text{ reads from Xa} \\ 50\% \text{ reads from Xi} \end{bmatrix} - \frac{1}{2} \begin{bmatrix} \text{Male} \\ 100\% \text{ reads from Xa} \end{bmatrix} = \begin{bmatrix} \text{deconvolved Xi} \\ 50\% \text{ reads from Xi} \end{bmatrix}$$

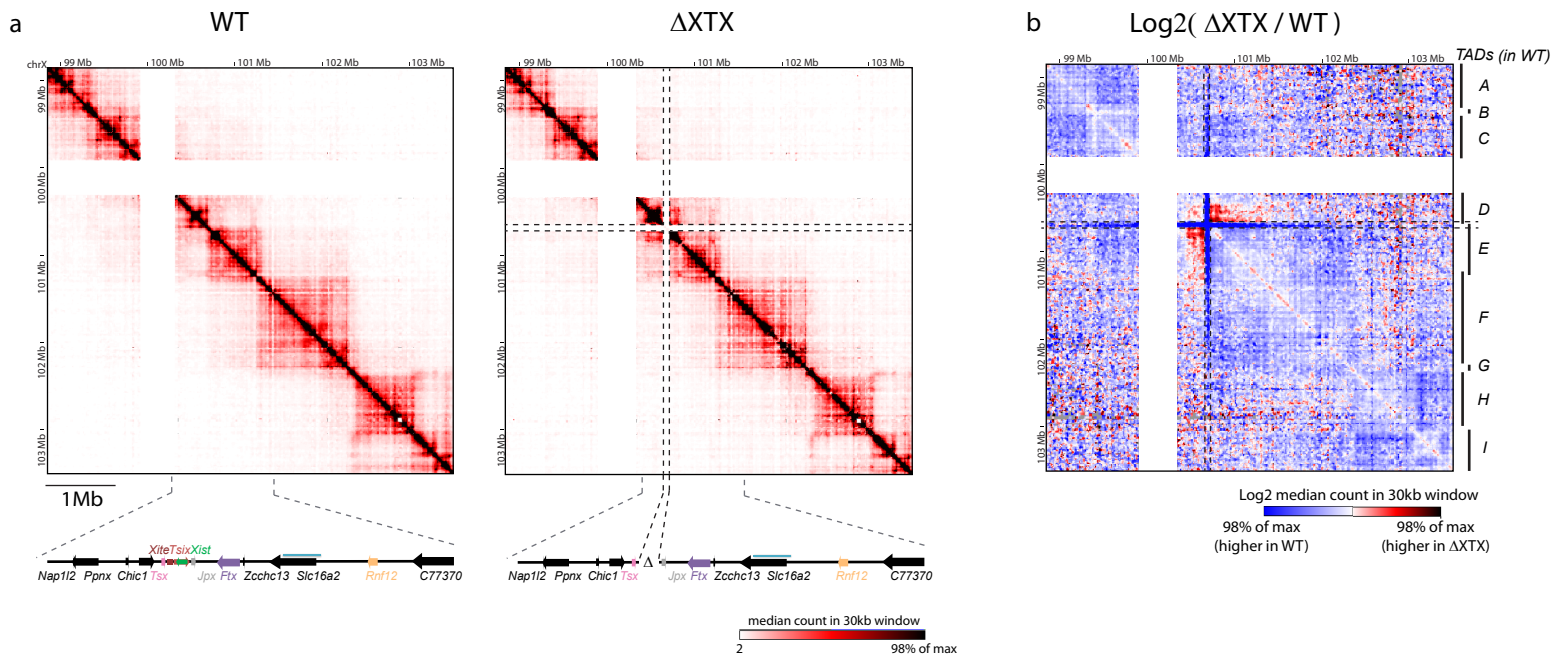
$$\begin{bmatrix} \text{Female replicate 1} \\ 50\% \text{ reads from Xa} \\ 50\% \text{ reads from Xi} \end{bmatrix} - \frac{1}{2} \begin{bmatrix} \text{Female replicate 2} \\ 50\% \text{ reads from Xa} \\ 50\% \text{ reads from Xi} \end{bmatrix} = \begin{bmatrix} \text{mock deconvolution} \\ 25\% \text{ reads from Xa} \\ 25\% \text{ reads from Xi} \end{bmatrix}$$

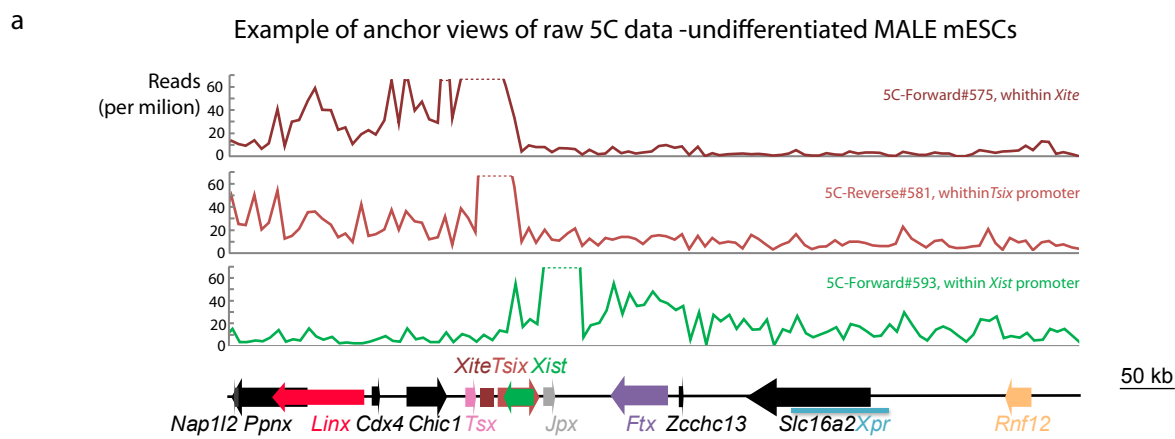


f Female replicate 1 - 1/2 Female replicate 2 (mock deconvolution: Xa+Xi)

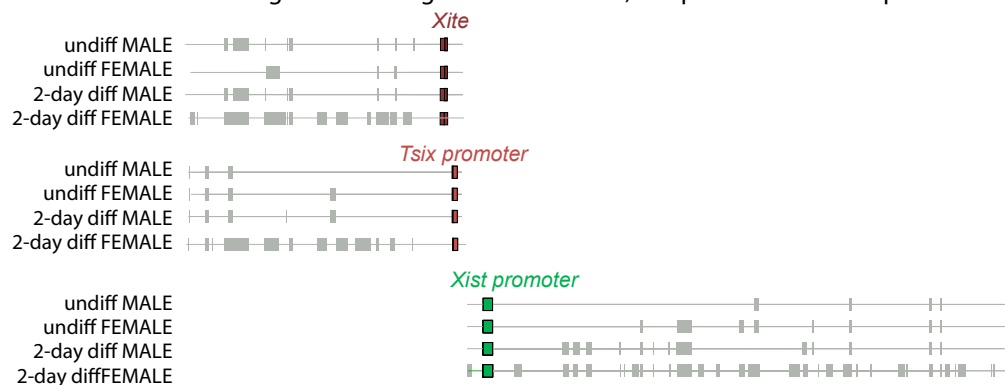




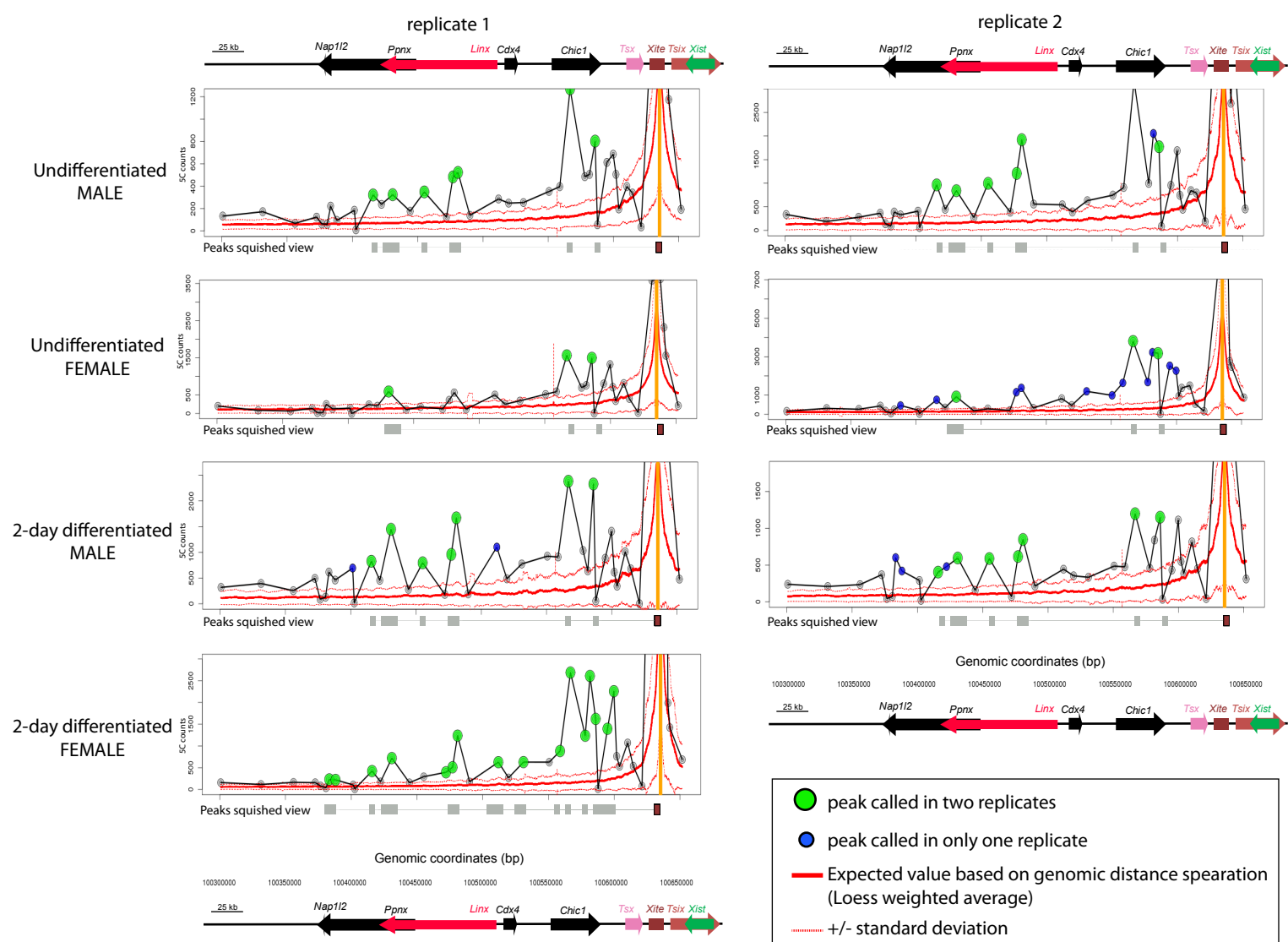


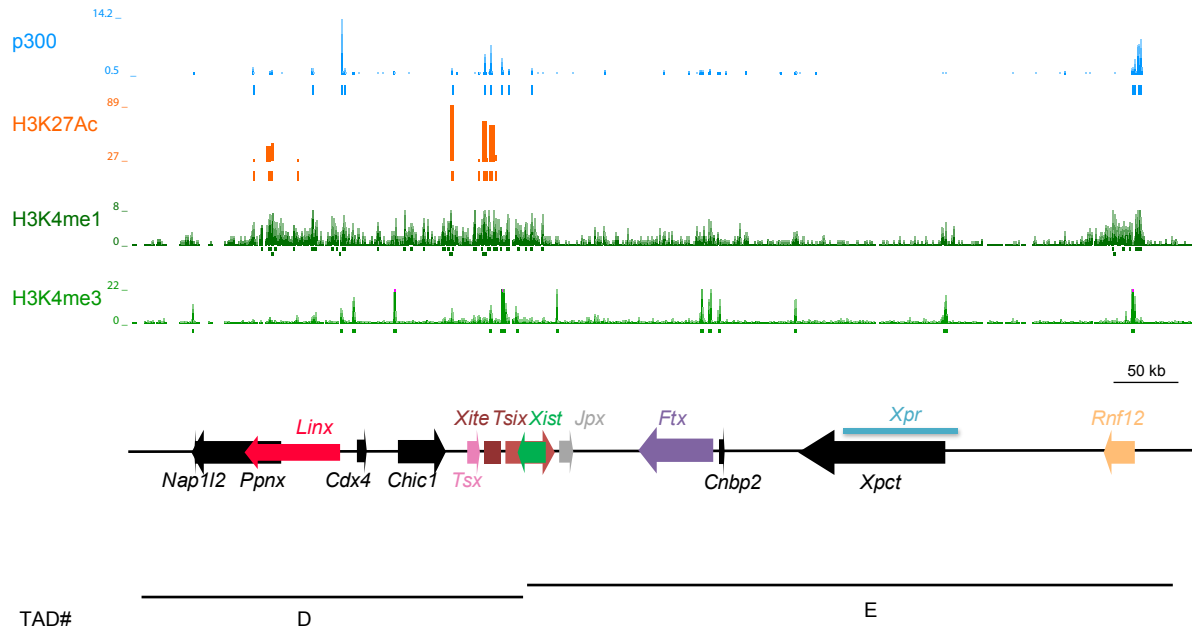


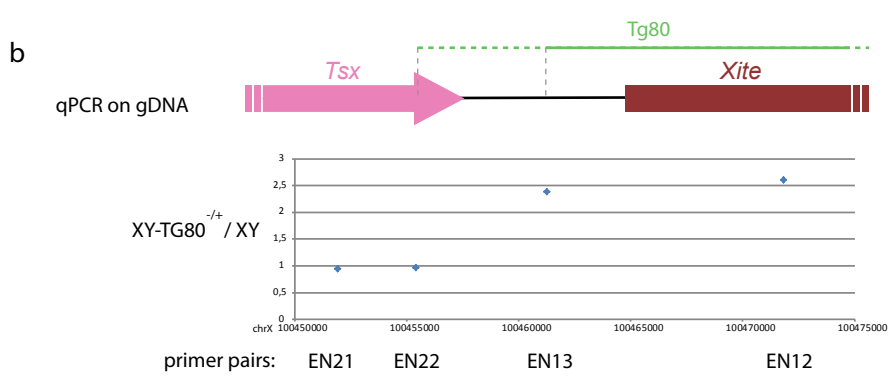
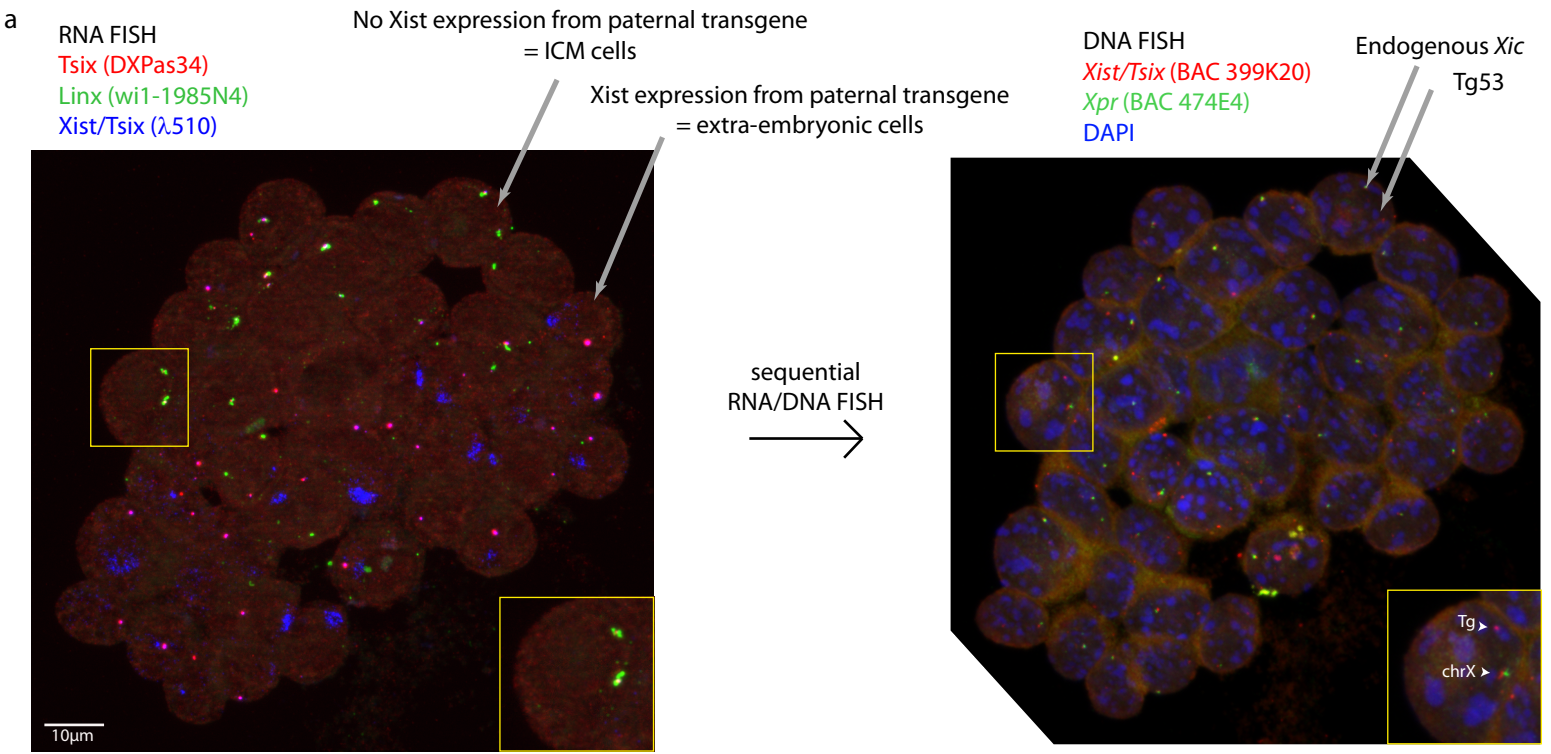
b Peak calling for all 5C fragments within *Xite*, *Tsix* promoter and *Xist* promoter

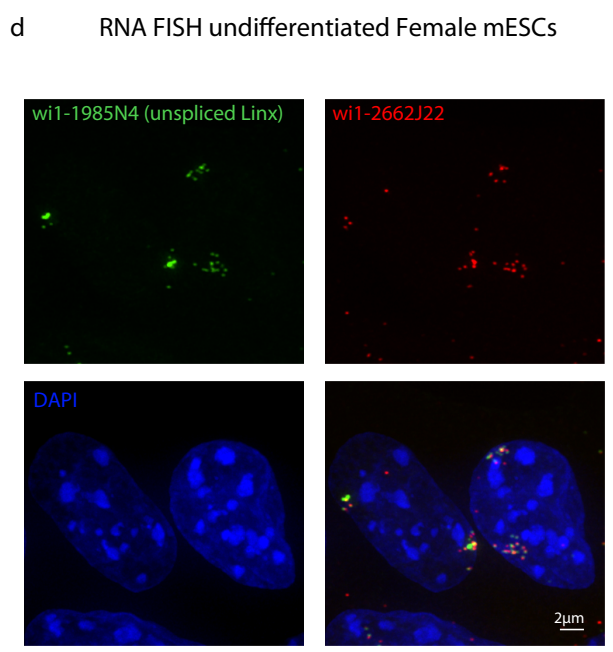
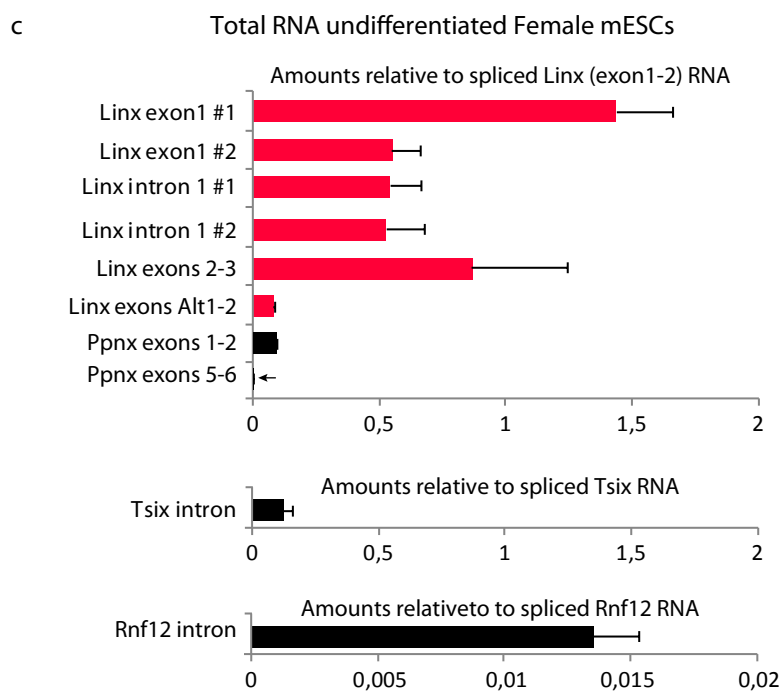
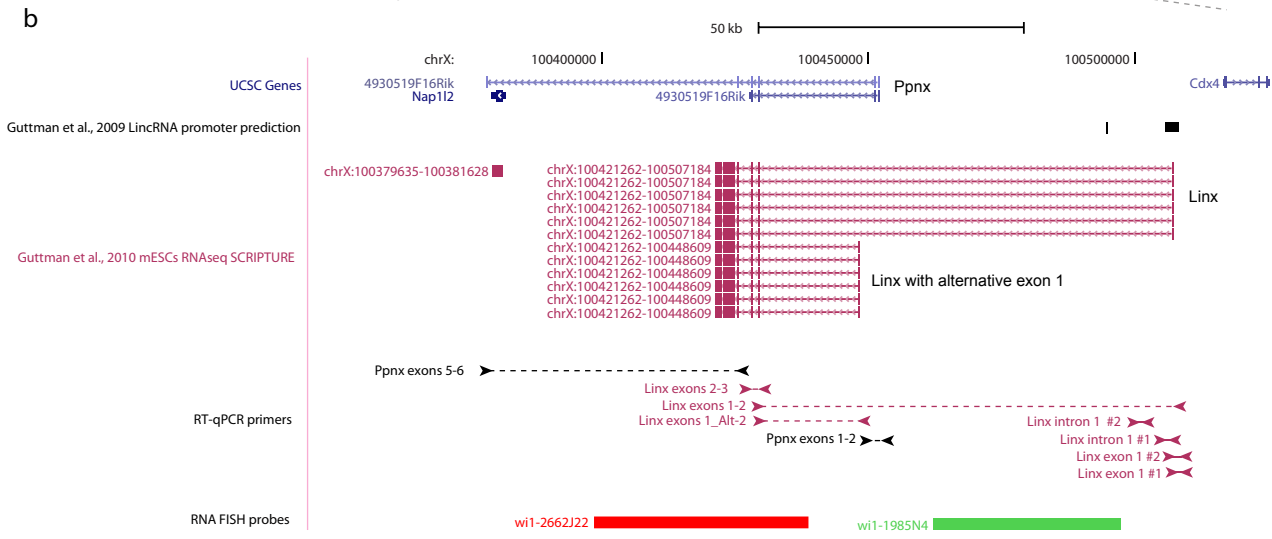
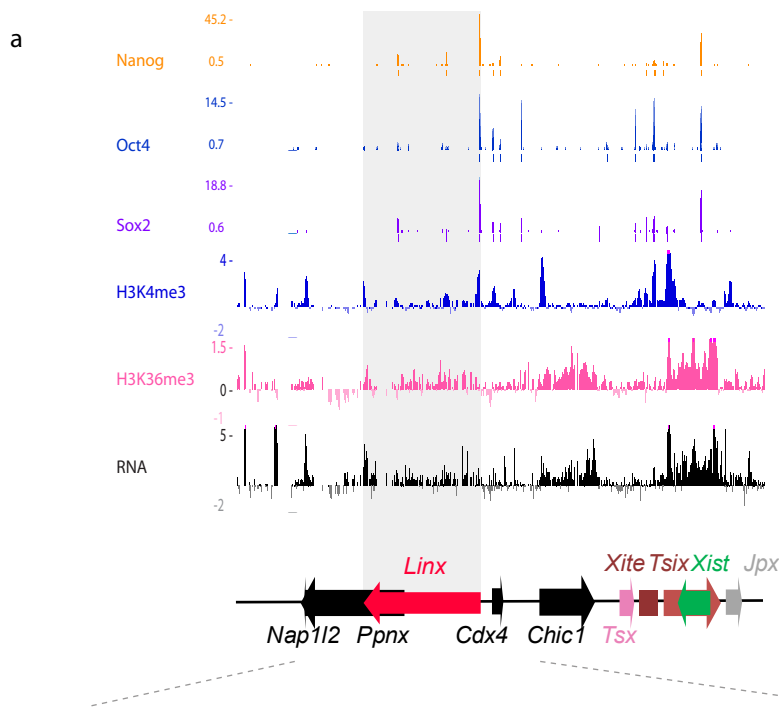


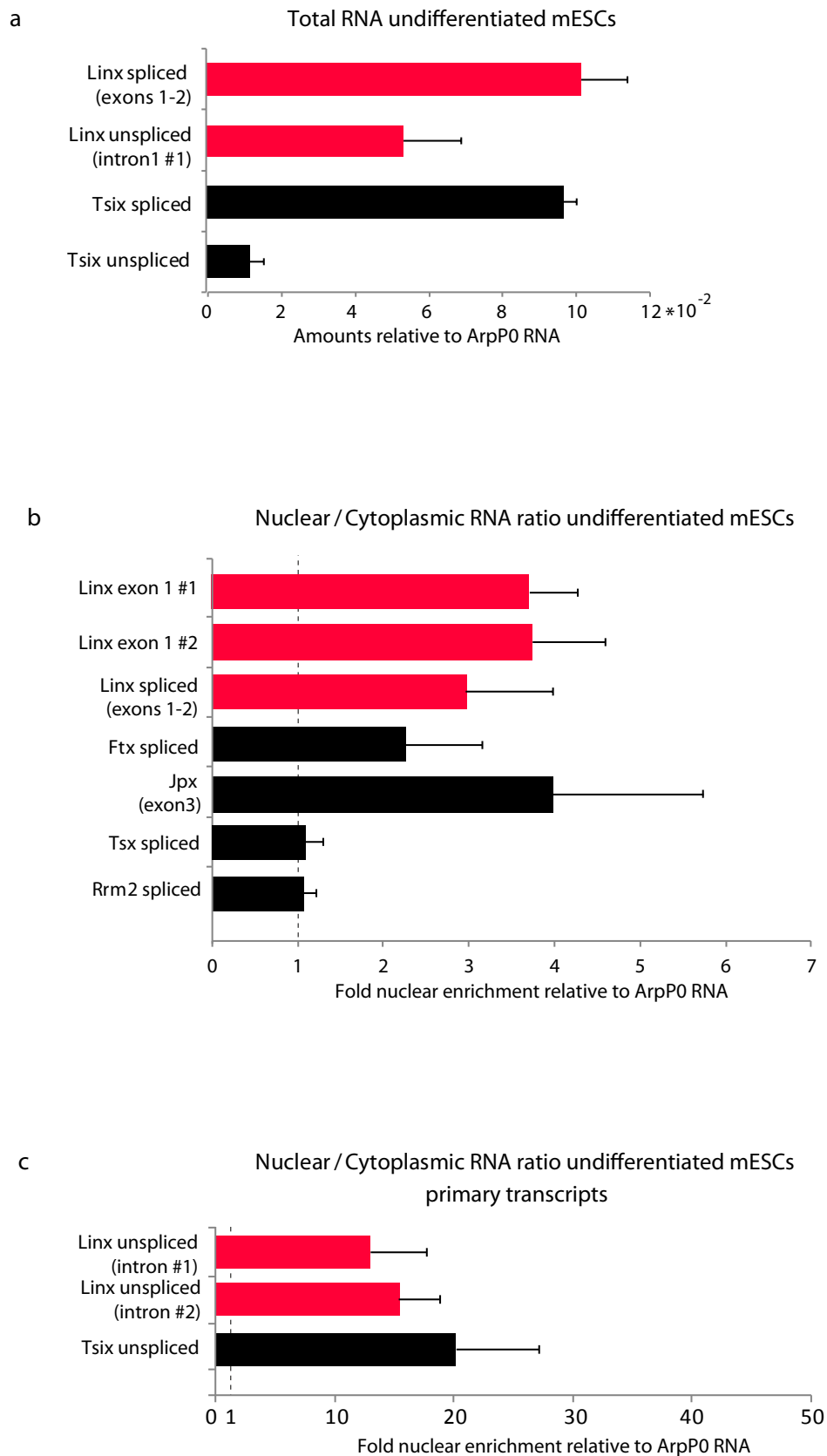
c Detailed anchor views of 5C-Reverse #576 (within *Xite*) across TAD#D





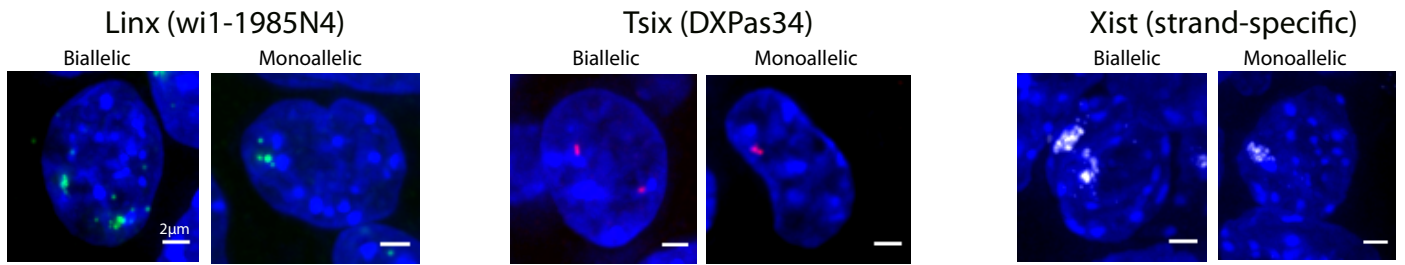




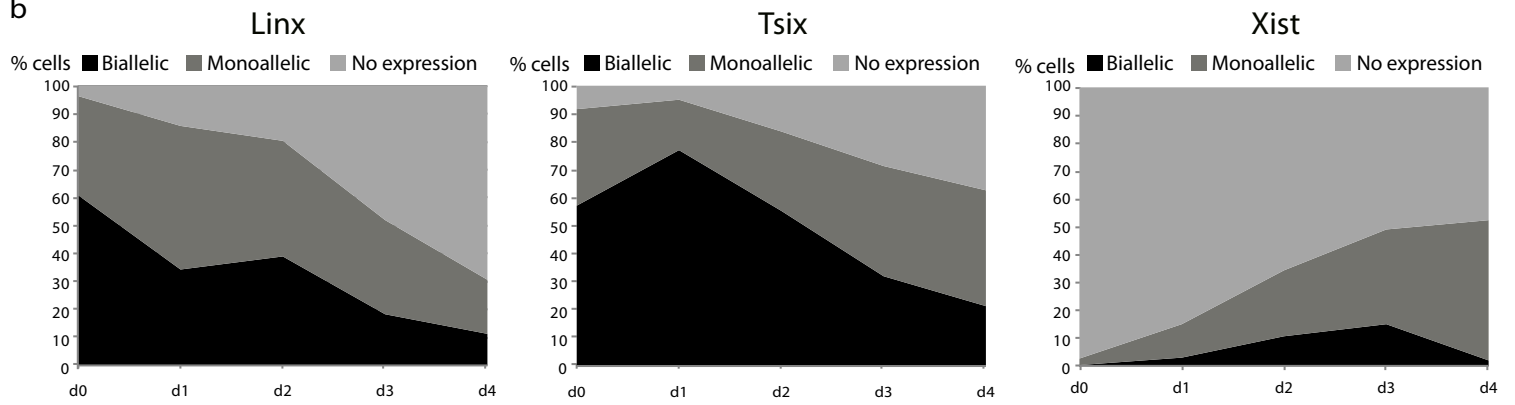


a

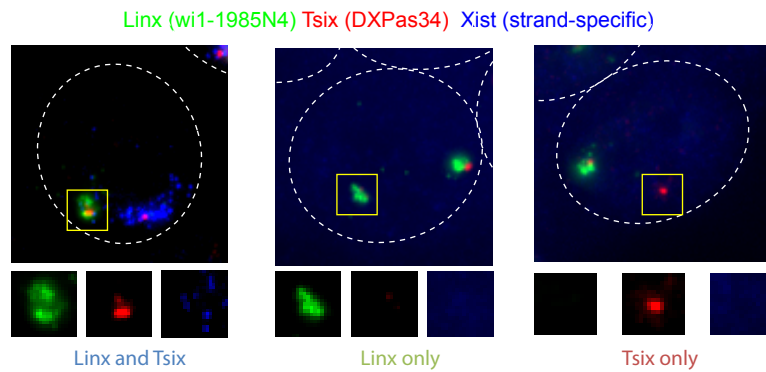
RNA FISH on differentiating female mESCs



b



c



d

