

## SUPPLEMENTARY DATA

FIG. S1. Unrooted UPGMA tree constructed using Euclidian genetic distances (Rogers, 1972), based on 13 microsatellite markers, to show the genetic relationships among 81 African and Indian Ocean *Coffea* populations. The tree was obtained from 500 bootstrap iterations. Key: West and West-Central Africa (W/WCA) = pink; East Africa (EA) = green; Madagascar (MAD) = dark blue; Mascarenes including the Comoros (MAS) = black. Species/population names are according to the Appendix in the text.

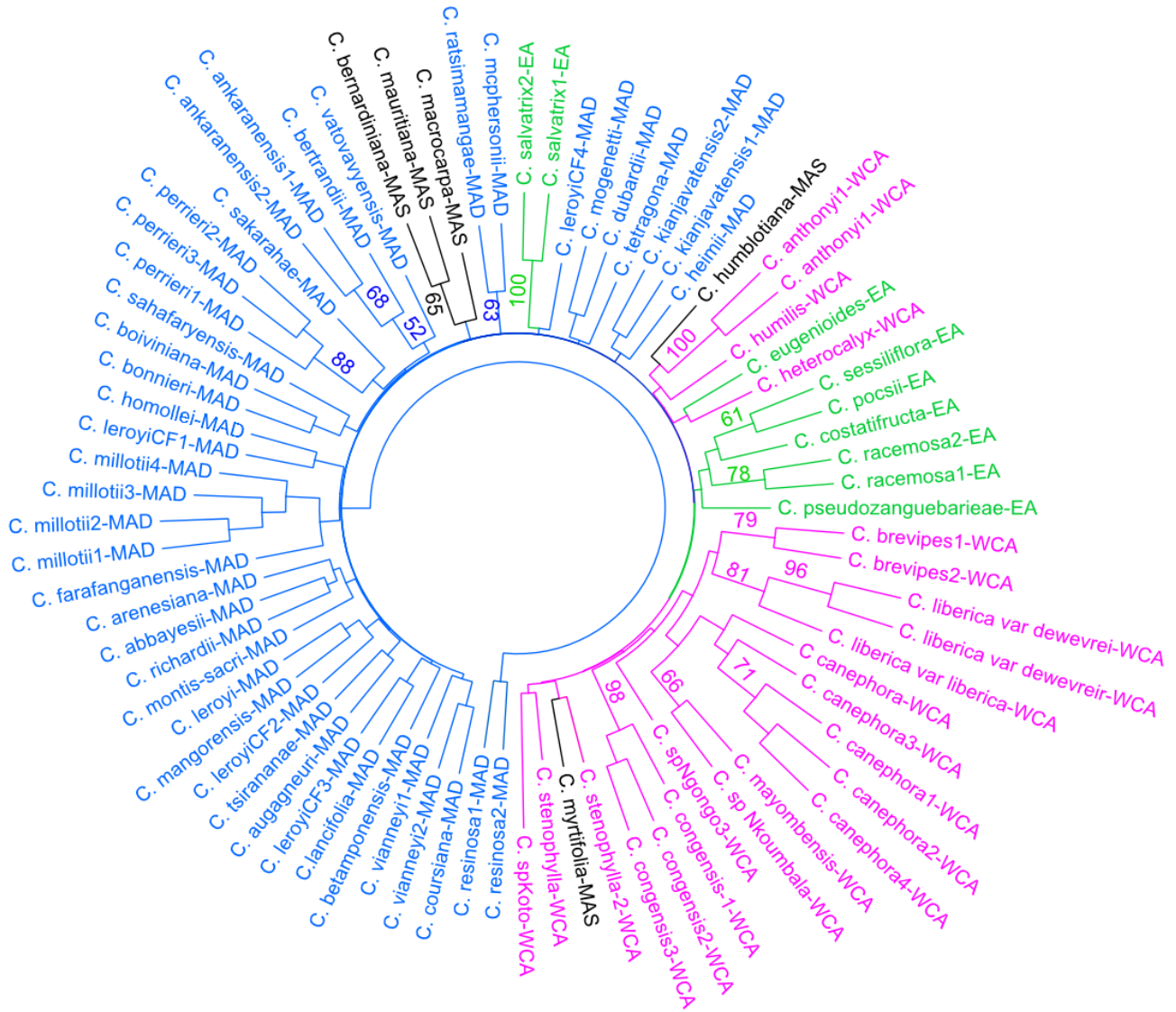


FIG. S2. Relationship between  $K$ -value and delta- $K$  by (A, B) regions and (C–H) sub-regions. The delta- $K$  value was calculated according to Evanno *et al.* (2005). The best  $K$ -value is given by the highest delta- $K$  value.

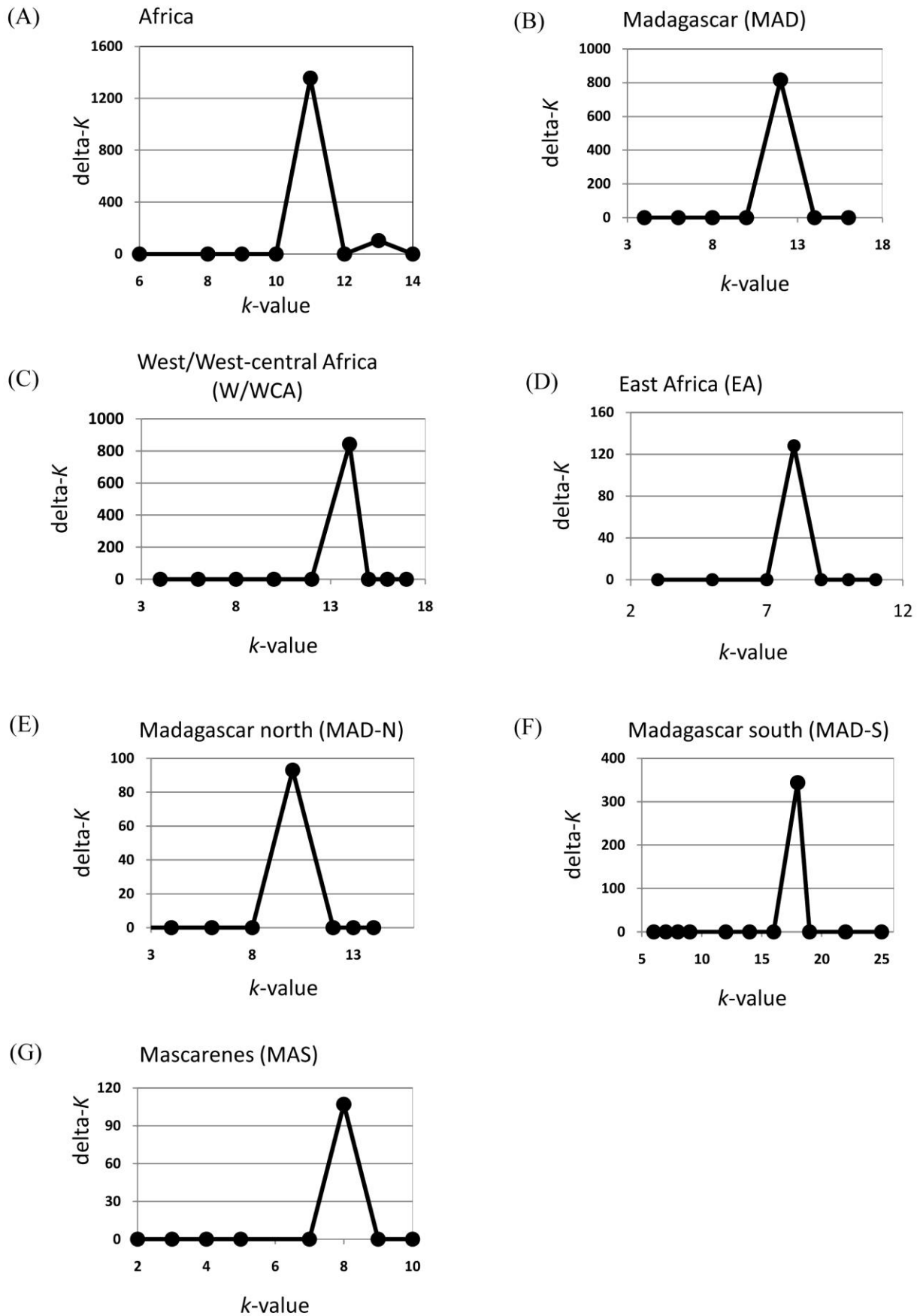


TABLE S1. Species' genetic parameters for each region or sub-region.  $A_{N,Total}$ : total number of alleles;  $A_N$ : number of alleles;  $A_{N,e}$ : efficient alleles;  $H_o$ : observed heterozygosity;  $H_e$ : expected heterozygosity;  $rb$ : null alleles. Regions and sub-regions: West and West-Central Africa (W/WCA); East Africa (EA); Indian Ocean Island Madagascar north (IOI: MAD-N); Indian Ocean Island Madagascar south (IOI: MAD-S); Indian Ocean Island Mascarenes (IOI:MAS).

Species	Region/sub-region	$A_{N,Total}$	$A_N$	$A_{N,e}$	$H_o$	$H_e$	$F$	$rb$
<i>C. costatifructa</i>	EA	7.3	2.38	1.78	0.31	0.39	0.13	0.05
<i>C. eugenoides</i>	EA	10.23	2.54	1.74	0.28	0.35	0.19	0.05
<i>C. pocsii</i>	EA	8.85	2.00	1.38	0.16	0.24	0.44	0.06
<i>C. pseudozanguebarieae</i>	EA	13.62	2.69	1.92	0.47	0.41	-0.13	-0.04
<i>C. racemosa1</i>	EA	7.54	2.38	1.88	0.34	0.37	0.07	0.02
<i>C. racemosa2</i>	EA	9.15	2.92	2.20	0.37	0.48	0.27	0.08
<i>C. salvatrix</i>	EA	13.54	2.31	1.61	0.29	0.27	-0.02	-0.01
<i>C. sessiliflora</i>	EA	9.38	2.15	1.68	0.19	0.29	0.48	0.07
<i>C. ankaranensis1</i>	IOI : MAD-N	4.62	2.31	1.91	0.45	0.36	-0.26	-0.06
<i>C. augagneuri</i>	IOI : MAD-N	7.31	2.77	2.26	0.43	0.50	0.11	0.04
<i>C. bonnieri</i>	IOI : MAD-N	9.77	2.62	1.94	0.29	0.41	0.23	0.08
<i>C. dubardii</i>	IOI : MAD-N	9.62	2.38	1.90	0.38	0.35	-0.11	-0.02
<i>C. heimii</i>	IOI : MAD-N	9.69	2.15	1.53	0.28	0.27	-0.03	0.00
<i>C. mcphersonii</i>	IOI : MAD-N	8.92	2.62	1.97	0.30	0.38	0.19	0.05
<i>C. ratsimamangae</i>	IOI : MAD-N	5.54	2.15	1.84	0.27	0.39	0.32	0.08
<i>C. sahafaryensis</i>	IOI : MAD-N	8.54	2.15	1.56	0.19	0.25	0.19	0.04
<i>C. tsirananae</i>	IOI : MAD-N	9.85	2.92	2.07	0.35	0.48	0.29	0.09
<i>C. abbayesii</i>	IOI : MAD-S	9.69	1.92	1.45	0.21	0.21	-0.01	0.00
<i>C. arenesiana</i>	IOI : MAD-S	7.92	1.50	1.30	0.25	0.18	-0.29	-0.09
<i>C. bertrandii</i>	IOI : MAD-S	10.62	1.92	1.36	0.20	0.20	0.01	0.00
<i>C. coursiana</i>	IOI : MAD-S	8.54	2.00	1.61	0.29	0.27	-0.06	-0.01
<i>C. farafanganensis</i>	IOI : MAD-S	7.23	2.38	1.58	0.25	0.30	0.10	0.03
<i>C. kianjavatensis1</i>	IOI : MAD-S	9.69	2.77	1.99	0.28	0.34	0.13	0.04
<i>C. kianjavatensis2</i>	IOI : MAD-S	9.69	1.92	1.35	0.14	0.22	0.24	0.05
<i>C. lancifolia</i>	IOI : MAD-S	9.85	2.31	1.54	0.23	0.27	0.10	0.03

<i>C. leroyi</i>	IOI : MAD-S	9.85	2.15	1.49	0.25	0.26	0.06	0.01
<i>C. leroyi CF1</i>	IOI : MAD-S	4.54	1.92	1.51	0.28	0.26	-0.07	-0.02
<i>C. leroyi CF2</i>	IOI : MAD-S	8.77	3.00	2.43	0.36	0.42	0.13	0.04
<i>C. leroyi CF4</i>	IOI : MAD-S	4.62	1.31	1.18	0.12	0.11	-0.13	-0.01
<i>C. mangoroensis</i>	IOI : MAD-S	5.46	2.38	2.01	0.50	0.45	-0.09	-0.03
<i>C. millotii2</i>	IOI : MAD-S	9.85	3.23	2.43	0.31	0.40	0.14	0.05
<i>C. millotii3</i>	IOI : MAD-S	9.85	2.38	1.78	0.26	0.31	0.14	0.03
<i>C. millotii4</i>	IOI : MAD-S	6.92	2.62	1.90	0.28	0.35	0.17	0.04
<i>C. montis-sacri</i>	IOI : MAD-S	9.00	2.08	1.48	0.23	0.29	0.16	0.04
<i>C. perrieri1</i>	IOI : MAD-S	9.85	2.62	1.88	0.35	0.29	-0.20	-0.04
<i>C. perrieri2</i>	IOI : MAD-S	8.54	2.38	1.68	0.35	0.35	0.04	0.00
<i>C. perrieri3</i>	IOI : MAD-S	5.00	1.85	1.69	0.31	0.32	0.03	0.01
<i>C. perrieri4</i>	IOI : MAD-S	9.62	1.77	1.60	0.27	0.26	-0.02	-0.01
<i>C. resinosa1</i>	IOI : MAD-S	9.85	2.23	1.95	0.40	0.33	-0.24	-0.05
<i>C. resinosa2</i>	IOI : MAD-S	9.77	2.46	1.92	0.26	0.32	0.19	0.04
<i>C. richardii</i>	IOI : MAD-S	8.54	1.62	1.34	0.23	0.16	-0.32	-0.04
<i>C. sakarahaе</i>	IOI : MAD-S	9.62	2.54	1.82	0.26	0.34	0.19	0.05
<i>C. tetragona</i>	IOI : MAD-S	7.46	1.54	1.24	0.13	0.14	0.12	0.01
<i>C. vatovavyensis</i>	IOI : MAD-S	10.00	2.15	1.62	0.24	0.26	0.03	0.01
<i>C. vianneyi1</i>	IOI : MAD-S	10.00	1.69	1.39	0.15	0.21	0.24	0.04
<i>C. vianneyi2</i>	IOI : MAD-S	10.00	1.46	1.46	0.44	0.23	-0.91	-0.14
<i>C.millotii1</i>	IOI : MAD-S	10.00	2.38	1.70	0.26	0.28	0.01	0.01
<i>C. bernardiniana</i>	IOI : MAS	8.38	1.92	1.42	0.19	0.23	0.15	0.03
<i>C. humblotiana</i>	IOI : MAS	5.00	1.23	1.12	0.08	0.08	0.07	0.00
<i>C. macrocarpa</i>	IOI : MAS	10.54	2.38	1.68	0.28	0.29	0.10	0.01
<i>C. mauritiana</i>	IOI : MAS	9.85	2.00	1.38	0.15	0.20	0.29	0.04
<i>C. myrtifolia</i>	IOI : MAS	7.38	1.77	1.31	0.12	0.18	0.14	0.04
<i>C. anthonyi1</i>	W/WCA	11.69	1.62	1.39	0.10	0.13	0.35	0.02
<i>C. anthonyi2</i>	W/WCA	7.00	1.77	1.53	0.11	0.20	0.06	0.13
<i>C. brevipes1</i>	W/WCA	6.00	3.77	2.99	0.50	0.58	0.16	0.05
<i>C. brevipes2</i>	W/WCA	9.77	3.62	2.74	0.49	0.51	0.11	0.02
<i>C. canephora</i>	W/WCA	13.69	4.38	2.51	0.46	0.52	0.05	0.03
<i>C. canephora1</i>	W/WCA	12.31	3.85	2.52	0.48	0.50	0.03	0.01

<i>C. canephora</i> 3	W/WCA	6.54	2.15	1.62	0.17	0.26	0.31	0.06
<i>C. canephora</i> 4	W/WCA	12.85	4.77	3.36	0.55	0.60	0.05	0.03
<i>C. canephora-r</i>	W/WCA	7.23	3.46	2.62	0.49	0.52	0.05	0.02
<i>C. congensis</i> 1	W/WCA	7.85	2.85	1.93	0.36	0.39	0.04	0.02
<i>C. congensis</i> 2	W/WCA	6.92	2.46	1.78	0.37	0.38	0.06	0.01
<i>C. congensis</i> 3	W/WCA	9.54	4.00	2.59	0.42	0.54	0.21	0.08
<i>C. humilis</i>	W/WCA	10.62	3.23	2.41	0.42	0.48	0.22	0.05
<i>C. liberica</i> var <i>dewevrei</i>	W/WCA	9.46	3.46	2.59	0.45	0.47	0.04	0.01
<i>C. liberica</i> var <i>dewevrei-r</i>	W/WCA	11.54	2.46	1.89	0.35	0.37	0.03	0.01
<i>C. liberica</i> var <i>liberica</i>	W/WCA	10.92	3.15	1.86	0.29	0.35	0.11	0.04
<i>C. sp.Congo</i>	W/WCA	7.38	4.15	2.96	0.35	0.56	0.35	0.13
<i>C. sp.Koto</i>	W/WCA	4.31	1.54	1.32	0.23	0.16	-0.41	-0.13
<i>C. stenophylla</i> 1	W/WCA	7.69	2.38	1.58	0.23	0.30	0.26	0.05
<i>C. stenophylla</i> 2	W/WCA	10.08	2.62	1.65	0.25	0.35	0.18	0.06
<i>C.sp.Nkoumbala</i>	W/WCA	6.54	3.00	2.20	0.35	0.43	0.14	0.06