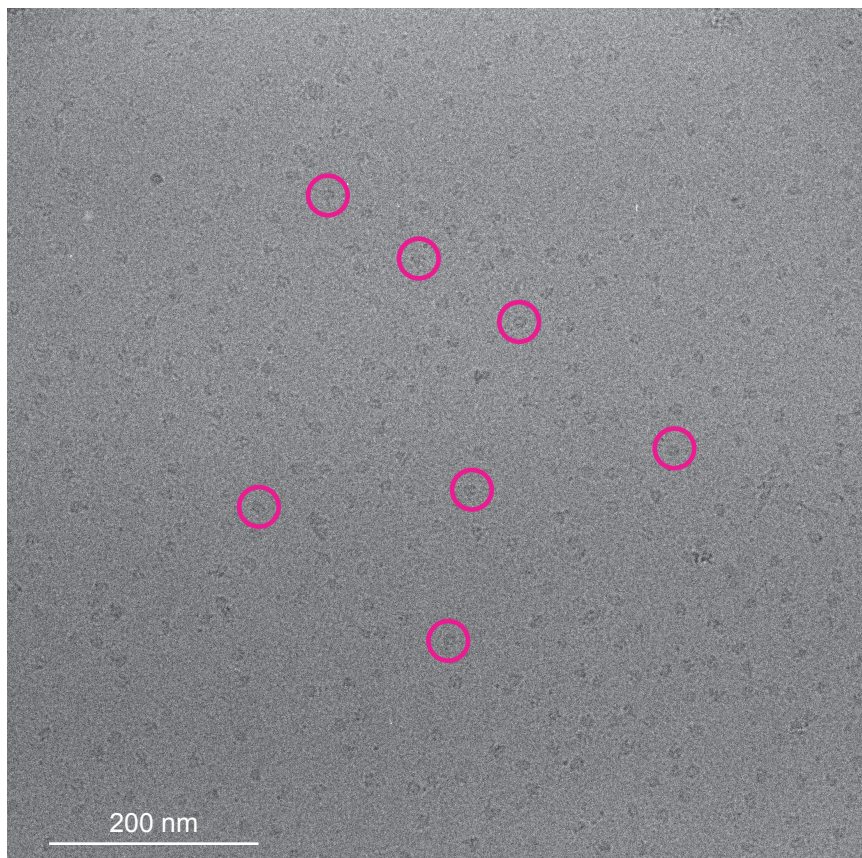
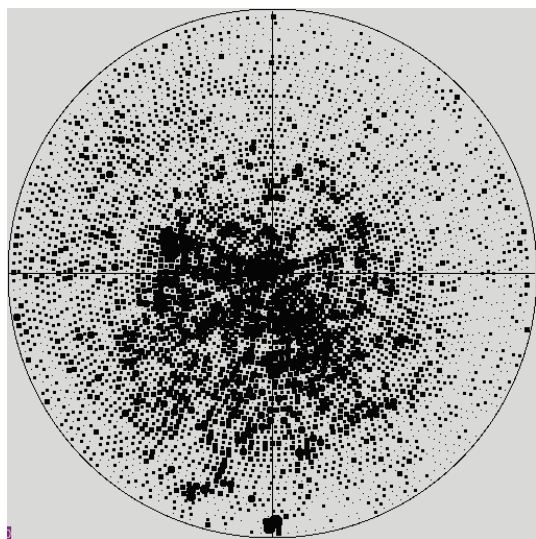
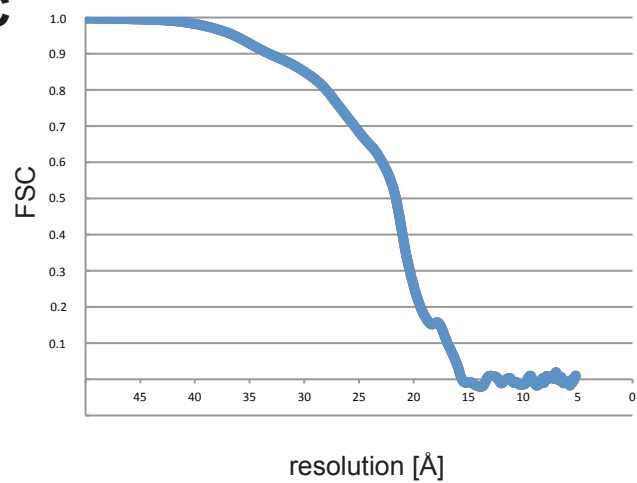
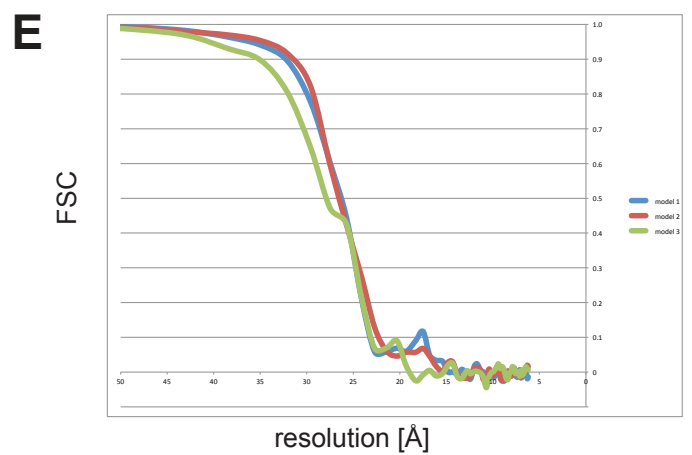
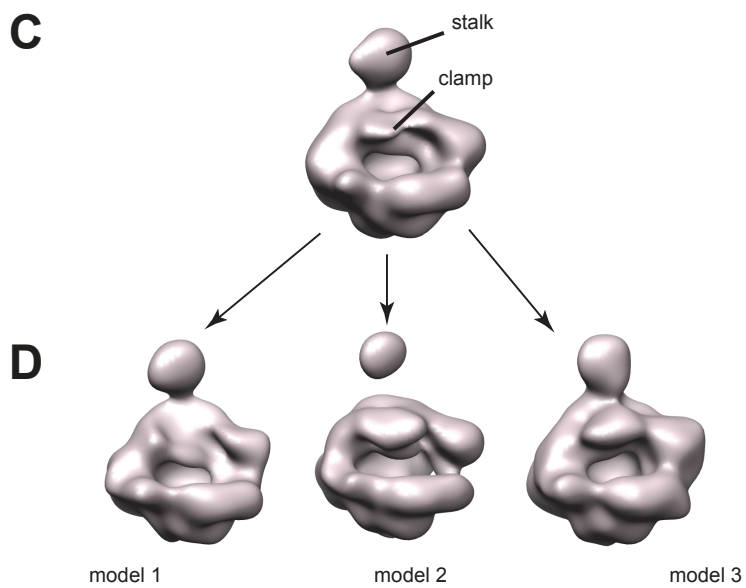
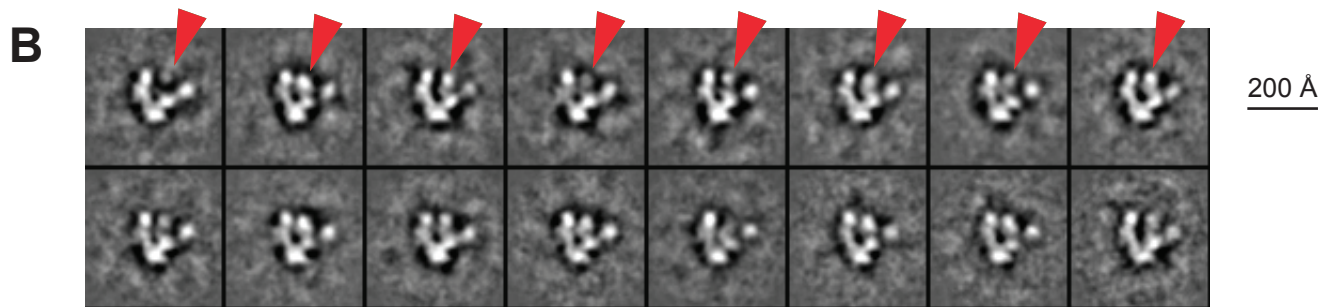
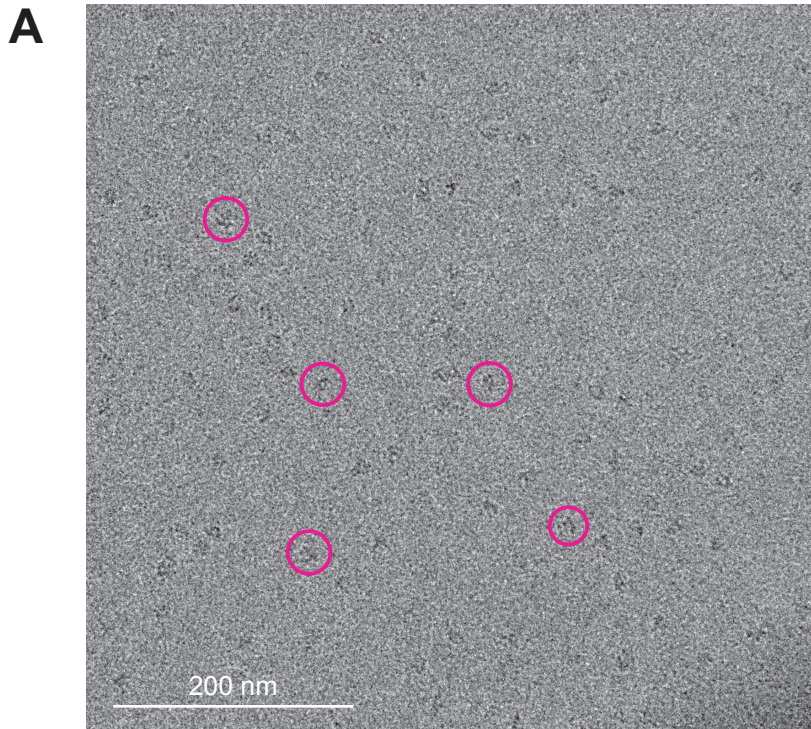


A**B****C**



Supplementary Figure 2, Kassube et al., 2012

SUPPLEMENTARY FIGURE CAPTIONS

Supplementary Figure 1. Cryo-EM analysis of the hPol II / scAlu complex.

- (A) Cryo-EM micrograph of the hPol II / scAlu complex. Particles in the center of the micrograph are highlighted with pink circles.
- (B) Angular distribution.
- (C) Fourier shell correlation curve.

Supplementary Figure 2. Cryo-EM analysis of the apo hPol II complex.

- (A) Cryo-EM micrograph of the apo hPol II complex. Particles are highlighted with pink circles.
- (B) Reference free 2D class averages. Arrowheads in the upper row point at flexible elements. (The images were binned to a final pixel size of ~ 6 Å for the 2D classification step).
- (C) Reconstruction of apo hPol II. In comparison with the ncRNA-bound structures, the clamp is less well defined due to unresolved flexibility.
- (D) Coexisting clamp conformations of apo hPol II.
- (E) Fourier shell correlation curves.