

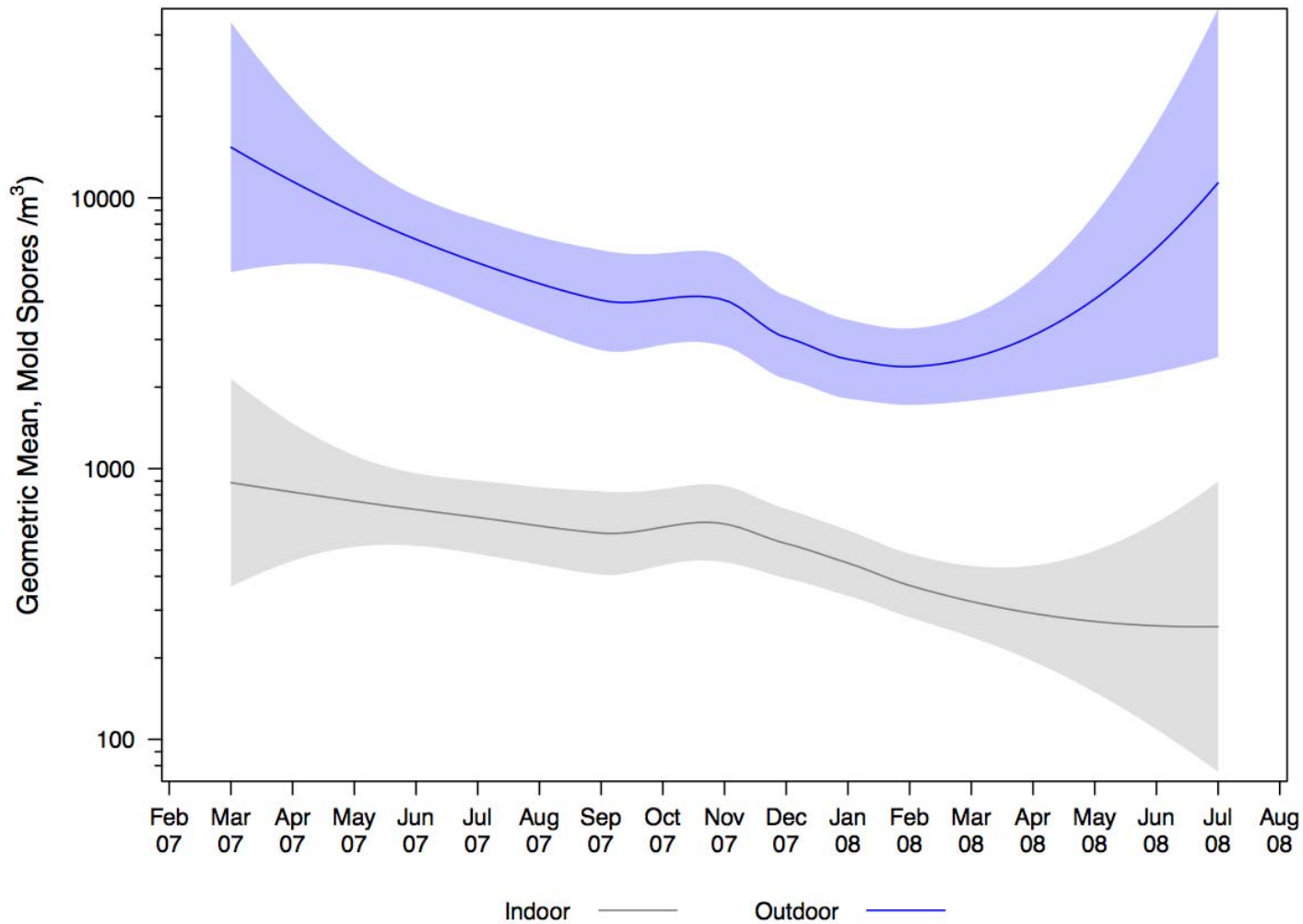
Supplemental Material

Indoor Environmental Exposures for Children with Asthma Enrolled in the HEAL Study, Post-Katrina New Orleans

L. Faye Grimsley, Patricia C. Chulada, Suzanne Kennedy, LuAnn White, Jeremy Wildfire, Richard D. Cohn, Herman Mitchell, Eleanor Thornton, Jane El-Dahr, Mosanda M. Mvula, Yvonne Sterling, William J. Martin, Kevin U. Stephens, Maureen Lichtveld

Contents

Supplemental Material, Figure S1. Baseline home environmental evaluations took place over a 17-month period, from March 2007 through August 2008. The lines (smoothed plot) represent all indoor and outdoor airborne mold levels (spores/m ³) measured during the baseline home environmental evaluations. The shaded areas around the lines depict the 95% confidence intervals.	2
Supplemental Material, Table S1: Concentrations of airborne mold in Flooded HEAL homes at baseline (N=68 homes)	3
Supplemental Material, Table S2: Concentrations of airborne mold in Non-Flooded HEAL homes at baseline (N=114 homes).....	4



Supplemental Material, Figure S1. Baseline home environmental evaluations took place over a 17-month period, from March 2007 through August 2008. The lines (smoothed plot) represent all indoor and outdoor airborne mold levels (spores/ m^3) measured during the baseline home environmental evaluations. The shaded areas around the lines depict the 95% confidence intervals.

Supplemental Material, Table S1: Concentrations of airborne mold in Flooded HEAL homes at baseline (N=68 homes)

Rank	Indoor Molds			Outdoor Molds		
	Mold Type	N (%) Detectable	Geometric Mean (GSE)	Mold Type	N (%) Detectable	Geometric Mean (GSE)
1 st	Basidiospores	68 (100%)	225 (45.0)	Basidiospores	68 (100%)	2055 (483.6)
2 nd	<i>Cladosporium</i>	66 (97%)	67 (13.0)	<i>Cladosporium</i>	67 (99%)	435 (91.2)
3 rd	Ascospores	65 (97%)	43 (7.4)	Ascospores	68 (100%)	323 (65.8)
4 th	<i>Penicillium-Aspergillus</i>	56 (82%)	20 (4.5)	<i>Penicillium-Aspergillus</i>	53 (78%)	22 (5.3)
5 th	<i>Curvularia</i>	55 (81%)	14 (2.6)	<i>Ganoderma</i>	52 (76%)	18 (4.3)
6 th	Unidentified	47 (69%)	7 (1.1)	<i>Curvularia</i>	47 (69%)	11 (2.7)
7 th	<i>Bipolaris</i>	39 (57%)	5 (0.9)	<i>Cercospora</i>	47 (69%)	9 (1.9)
8 th	<i>Pithomyces</i>	58 (66%)	5 (0.8)	<i>Alternaria</i>	43 (63%)	7 (1.5)
9 th	<i>Alternaria</i>	29 (43%)	3 (0.5)	Unidentified	42 (63%)	7 (1.7)
10 th	<i>Ganoderma</i>	26 (38%)	3 (0.4)	<i>Bipolaris</i>	37 (54%)	6 (1.2)
11 th	<i>Epicoccum</i>	19 (28%)	2 (0.3)	<i>Epicoccum</i>	34 (50%)	3 (0.6)
12 th	<i>Chaetomium</i>	15 (22%)	2 (0.2)	<i>Pithomyces</i>	28 (41%)	3 (0.4)
13 th	<i>Arthrinium</i>	10 (15%)	2 (0.2)	<i>Pestalotia</i>	15 (22%)	2 (0.2)
14 th	<i>Ulocladium</i>	11 (16%)	1 (0.2)	<i>Chaetomium</i>	10 (15%)	1(0.2)
15 th	<i>Cercospora</i>	10 (15%)	1 (0.1)	<i>Arthrinium</i>	5 (7%)	1(0.1)
16 th	<i>Pestalotia</i>	6 (9%)	1 (0.1)	<i>Stemphylium</i>	5 (7%)	1(0.1)
17 th	<i>Stemphylium</i>	3 (4%)	1 (0.1)	<i>Stachybotrys</i>	3 (4%)	1(0.1)
18 th	<i>Stachybotrys</i>	3 (4%)	1 (0.1)	<i>Ulocladium</i>	2 (3%)	1(0.1)
19 th	<i>Trichoderma</i>	0 (0%)	0 (0)	Rust	2 (3%)	1(0.1)
20 th	Rust	0 (0%)	0 (0)	<i>Trichoderma</i>	1 (1%)	1(0.1)
21 st	Other	0 (0%)	0 (0)	Other	0 (0%)	0 (0)

Supplemental Material, Table S2: Concentrations of airborne mold in Non-Flooded HEAL homes at baseline (N=114 homes)

Rank	Indoor Molds			Outdoor Molds		
	Mold Type	N (%) Detectable	Geometric Mean (GSE)	Mold Type	N (%) Detectable	Geometric Mean (GSE)
1 st	Basidiospores	111 (97%)	110 (16.9)	Basidiospores	113 (99%)	1002 (200.1)
2 nd	<i>Cladosporium</i>	110 (96%)	63 (9.2)	<i>Cladosporium</i>	113 (99%)	510 (80.2)
3 rd	Ascospores	102 (89%)	27 (3.9)	Ascospores	114 (100%)	215 (30.5)
4 th	<i>Penicillium-Aspergillus</i>	86 (75%)	16 (3.1)	<i>Penicillium-Aspergillus</i>	80 (70%)	17 (3.4)
5 th	<i>Curvularia</i>	85 (75%)	12 (2.1)	<i>Ganoderma</i>	82 (72%)	13 (2.3)
6 th	<i>Bipolaris</i>	67 (59%)	5 (0.7)	<i>Curvularia</i>	75 (66%)	11 (2.2)
7 th	Unidentified	64 (56%)	5 (0.7)	Unidentified	75 (66%)	9 (1.6)
8 th	<i>Pithomyces</i>	62 (54%)	5 (0.9)	<i>Cercospora</i>	47 (59%)	6 (1.0)
9 th	<i>Alternaria</i>	43 (37%)	2 (0.3)	<i>Alternaria</i>	75 (66%)	7 (1.0)
10 th	<i>Ganoderma</i>	34 (30%)	2 (0.2)	<i>Bipolaris</i>	71 (62%)	5 (0.8)
11 th	<i>Epicoccum</i>	32 (28%)	2 (0.2)	<i>Epicoccum</i>	48 (42%)	3 (0.4)
12 th	<i>Ulocladium</i>	21 (18%)	2 (0.2)	<i>Pithomyces</i>	39 (34%)	3 (0.4)
13 th	<i>Pestalotia</i>	14 (12%)	1 (0.1)	<i>Pestalotia</i>	27 (24%)	2 (0.1)
14 th	<i>Cercospora</i>	13 (11%)	1 (0.1)	<i>Arthrinium</i>	8 (7%)	1 (0.1)
15 th	<i>Chaetomium</i>	12 (11%)	1 (0.1)	<i>Chaetomium</i>	7 (6%)	1 (0.1)
16 th	<i>Arthrinium</i>	7 (6%)	1 (0.1)	<i>Ulocladium</i>	7 (6%)	1 (0.1)
17 th	<i>Stemphylium</i>	5 (4%)	1 (0.1)	<i>Stachybotrys</i>	5 (4%)	1 (0.1)
18 th	<i>Stachybotrys</i>	3 (3%)	1 (0.04)	<i>Stemphylium</i>	3 (3%)	1 (0.04)
19 th	Rust	2 (2%)	1 (0.02)	Rust	3 (3%)	1 (0.03)
20 th	<i>Trichoderma</i>	1 (1%)	1 (0.1)	<i>Trichoderma</i>	0 (0%)	0 (0)
21 st	Other	0 (0%)	0 (0)	Other	0 (0%)	0 (0)