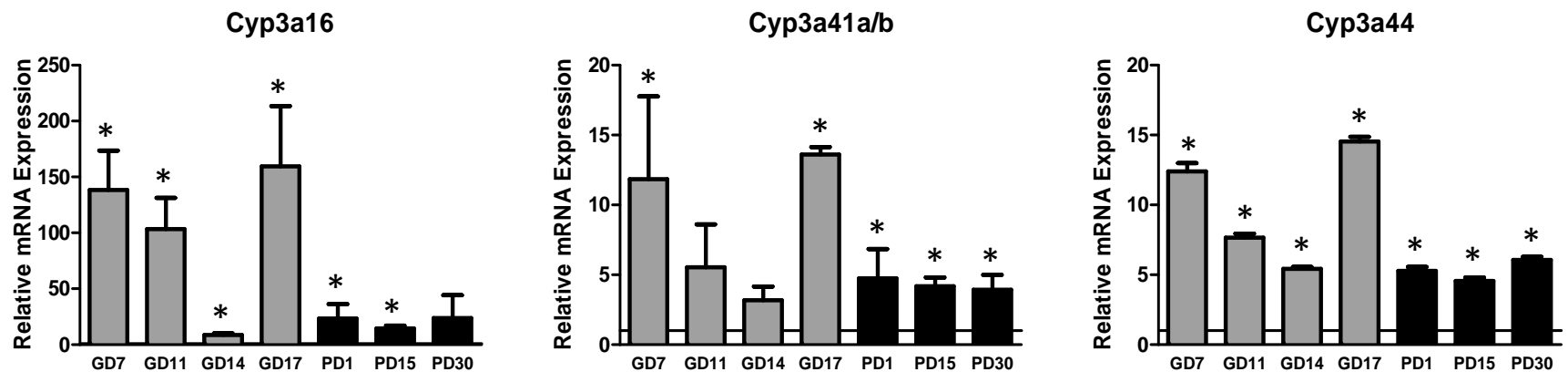


# Alteration of the Expression of Pesticide-Metabolizing Enzymes in Pregnant Mice: Potential Role in the Increased Vulnerability of the Developing Brain

Marie C. Fortin, Lauren M. Aleksunes, Jason R. Richardson

## Drug Metabolism and Disposition

### Supplemental Figure 1



**Supplemental Figure 1: Relative mRNA expression of juvenile specific (Cyp3a16) and female specific (Cyp3a41a/b and Cyp3a44) Cytochromes P450.** Mean relative mRNA  $\pm$  SE (n=3 or 4) at different time points during gestation (GD; grey bars) and postpartum periods (PD; black bars). mRNA data were normalized to Gapdh and compared to virgin mice by paired t-tests. An asterisk “\*” indicates a statistically significant (p<0.05) difference between the pregnant or postpartum mice group and the corresponding age-matched control virgin mice. The lines at 1.0 represent the normalized virgin data.