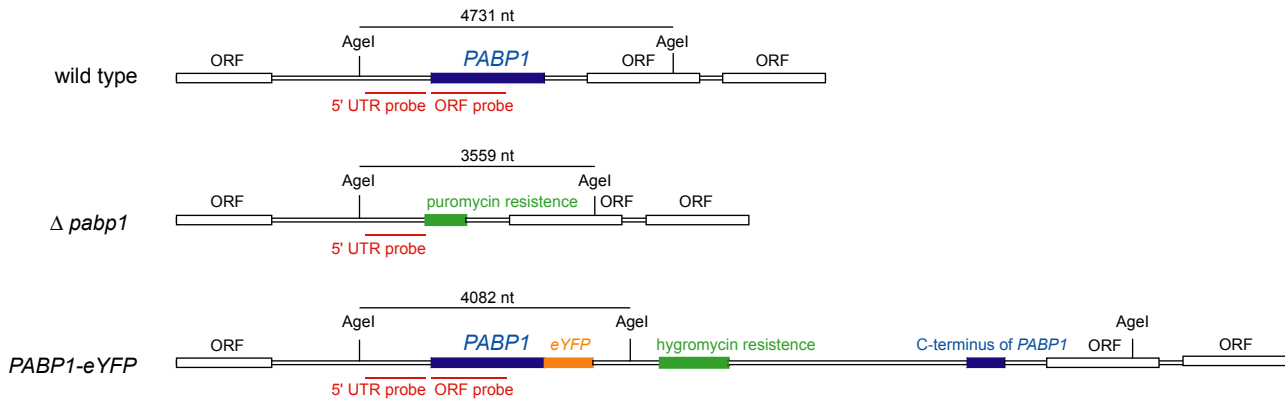
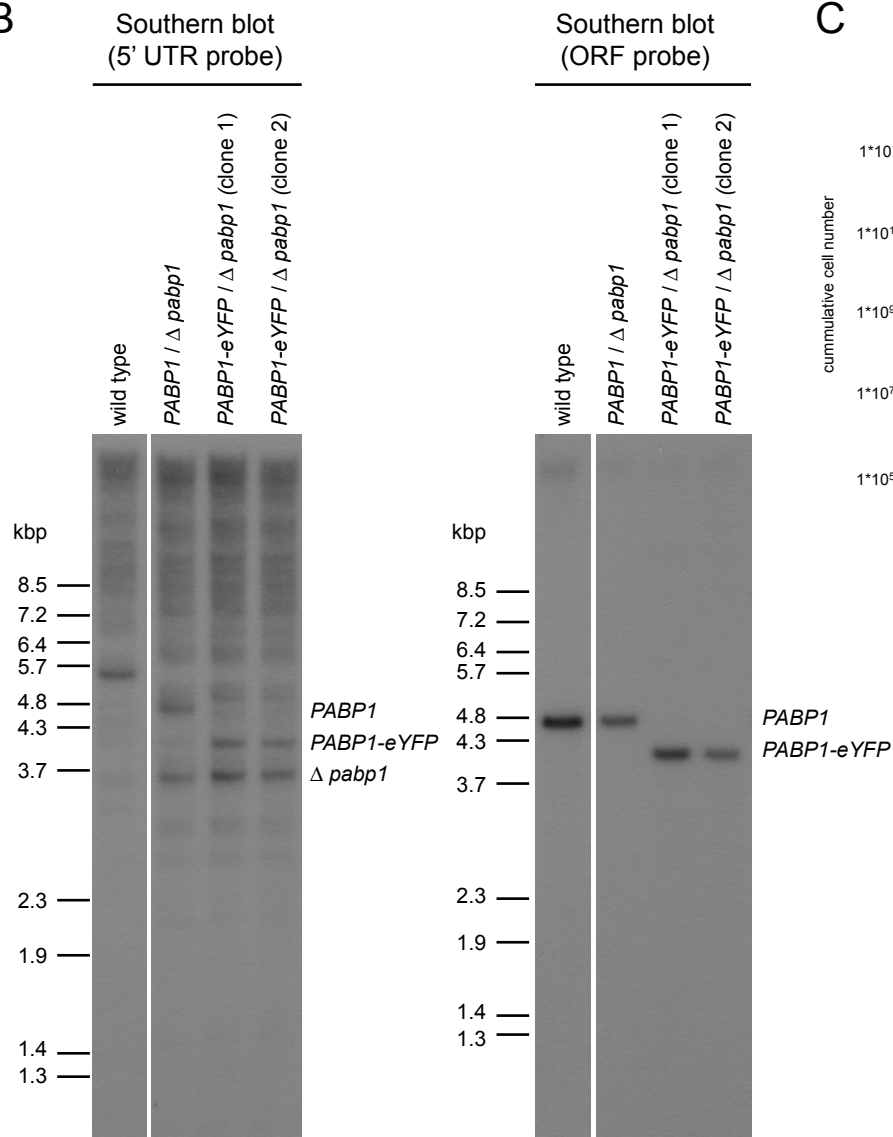


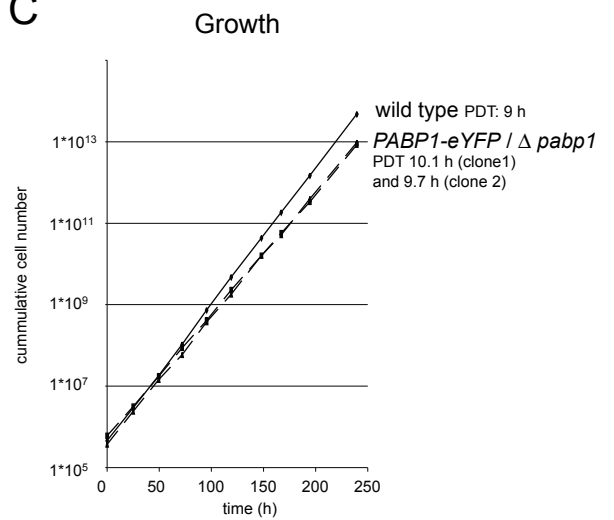
A



B



C



**Figure S2: Verification and analysis of PABP1-eYFP /  $\Delta$ pabp1 procyclic cells**

**A)** To-scale maps of the PABP1 genomic locus: wild type (top), after replacement of the PABP1 gene by a puromycin resistance gene ( $\Delta$ PABP1, middle) and after integration of PABP1-eYFP (bottom). Agel restriction enzyme sites and positions of the probes used for the Southern Blot in B) are indicated.

**B)** Verification of the transgenic cell lines by Southern blot.

**C)** Growth curves of wild type cells and transgenic cell lines. Population doubling times (PDT) are indicated.