

The evolution of vertebrate somatostatin receptors and their gene regions involves extensive chromosomal rearrangements

Daniel Ocampo Daza^{*1}, Görel Sundström^{1, 2}, Christina A. Bergqvist¹ and Dan Larhammar¹

¹ Department of Neuroscience, Uppsala University, Box 593, SE-75124 Uppsala, Sweden

² Present address: Department of Medical Biochemistry and Microbiology, Uppsala University, Box 582, SE-75123 Uppsala, Sweden

* Corresponding author

Telephone: +46-18-4714173

Fax: +46-18-511540

SUPPLEMENTAL FIGURES 4-20

Figures S4-20: Bootstrapped Neighbor Joining (NJ) and Phylogenetic Maximum Likelihood (PhyML) trees of the *SSTR1*, -4 and -6-neighboring gene families. The topologies are supported by non-parametric bootstrap analyses with 1000 (NJ) or 100 (PhyML) replicates (see Methods). Branch support is shown at the nodes. The trees are rooted with the identified fruit fly sequences, unless specified in Table 2. Species abbreviations are applied as follows: *Homo sapiens* (Hsa), *Mus musculus* (Mmu), *Canis familiaris* (Cfa), *Monodelphis domestica* (Mdo), *Macropus eugenii* (Meu), *Gallus gallus* (Gga), *Meleagris gallopavo* (Mga), *Taeniopygia guttata* (Tgu), *Anolis carolinensis* (Aca), *Silurana (Xenopus) tropicalis* (Xtr), *Danio rerio* (Dre), *Oryzias latipes* (Ola), *Gasterosteus aculeatus* (Gac), *Tetraodon nigroviridis* (Tni), *Takifugu rubripes* (Tru), *Ciona intestinalis* (Cin), *Ciona savignyi* (Csa), *Branchiostoma floridae* (Bfl), *Caenorhabditis elegans* (Cel) and *Drosophila melanogaster* (Dme). See Methods – “*Identification and analysis of neighboring gene families/Conserved syntenic analysis*” - for the choice of species representation. HGNC symbols are used for all human sequences. Other species' sequences are identified by chromosomal/genomic scaffold assignment. Lowercase a, b and c are used to distinguish sequences located on the same chromosomes. Comprehensive information about each sequence is available in Additional file 8, Table S2.

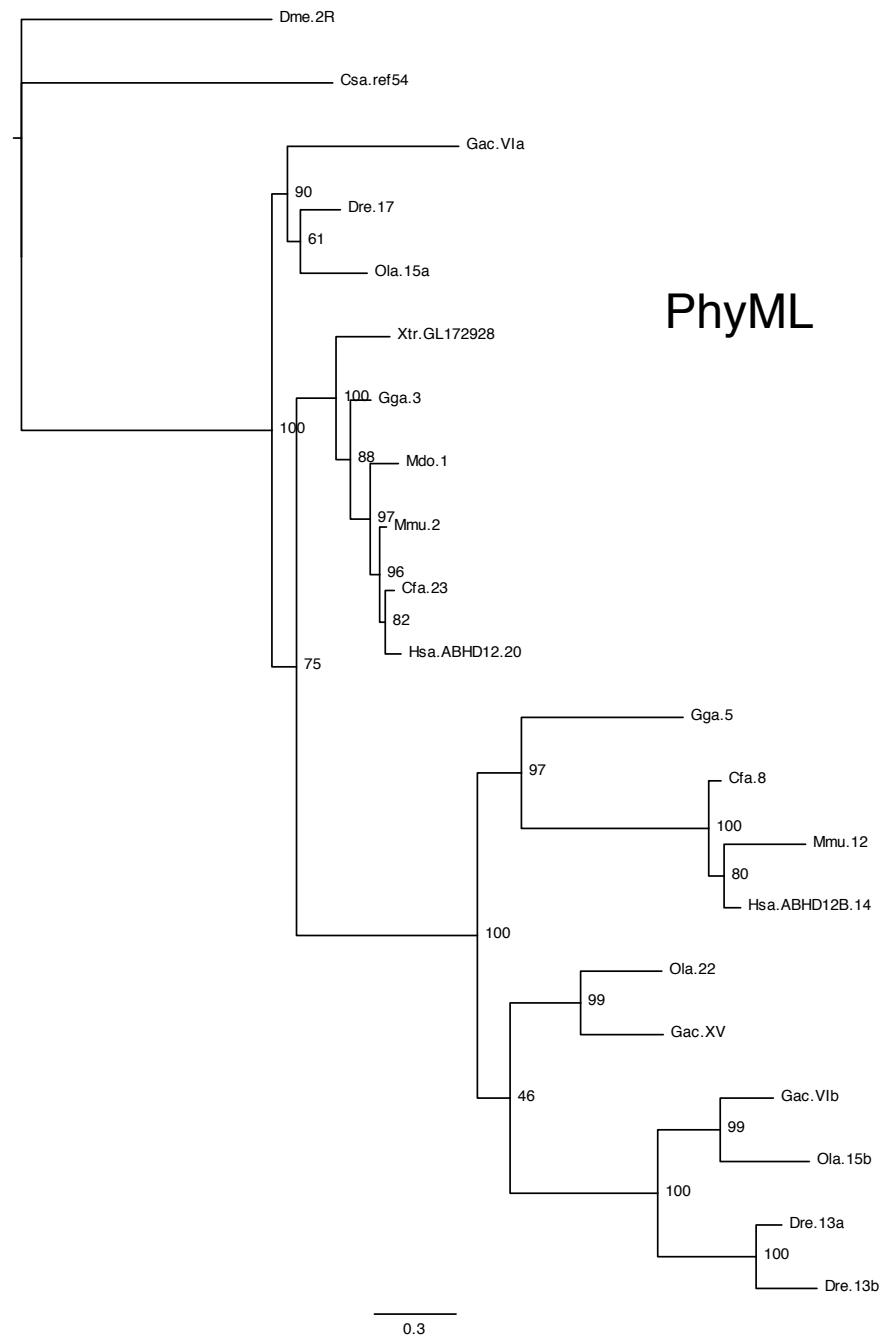
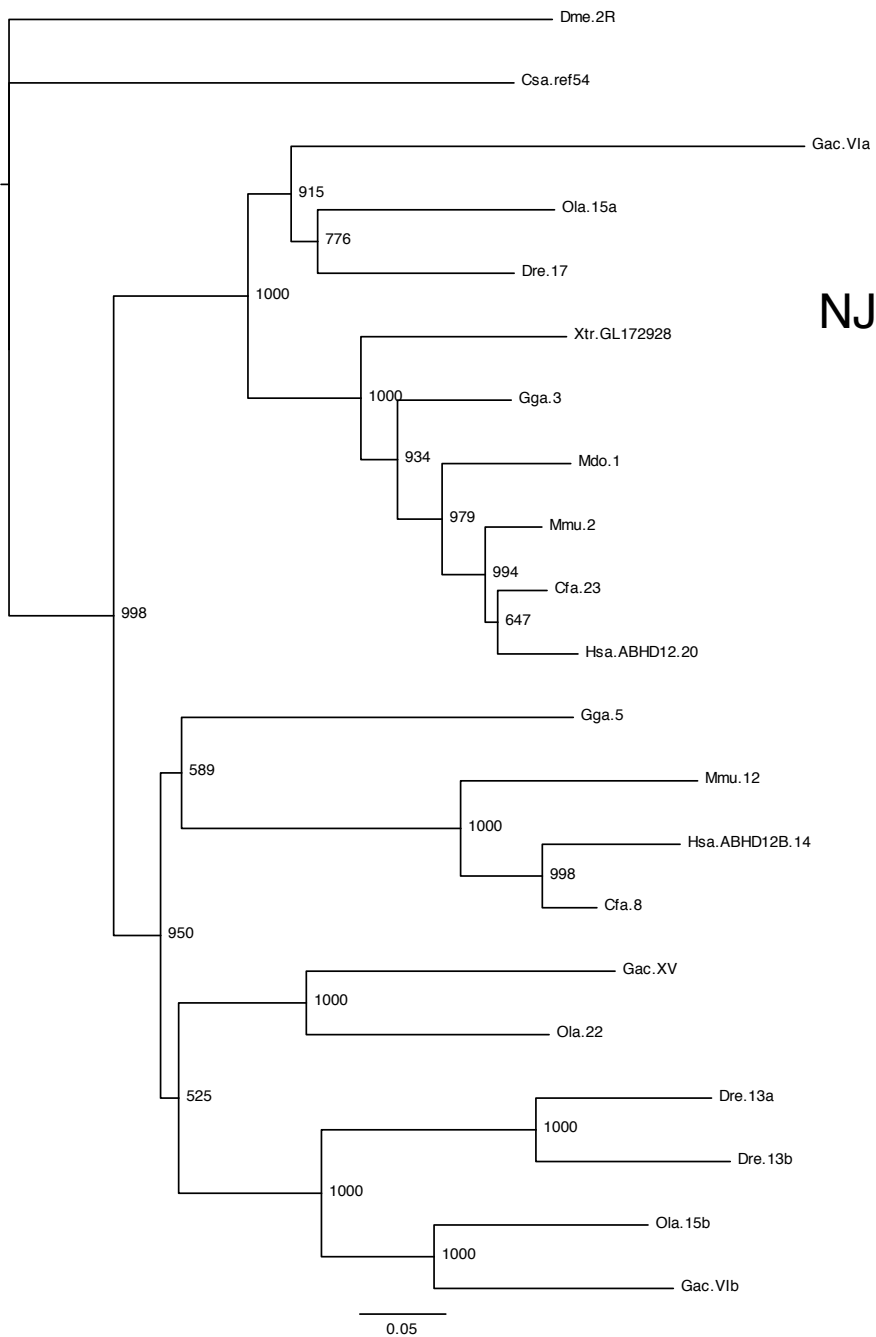


Figure S4. ABHD12

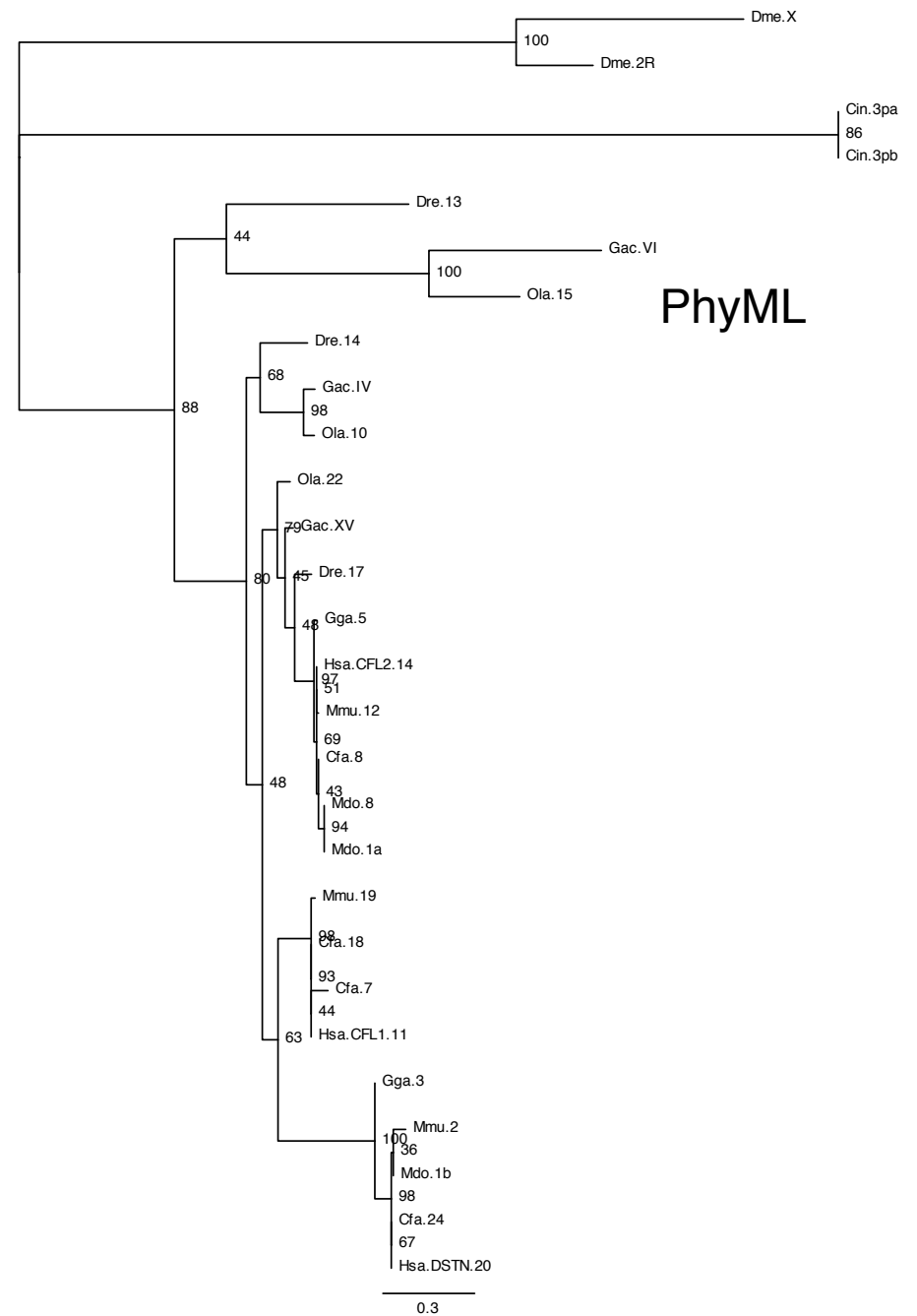
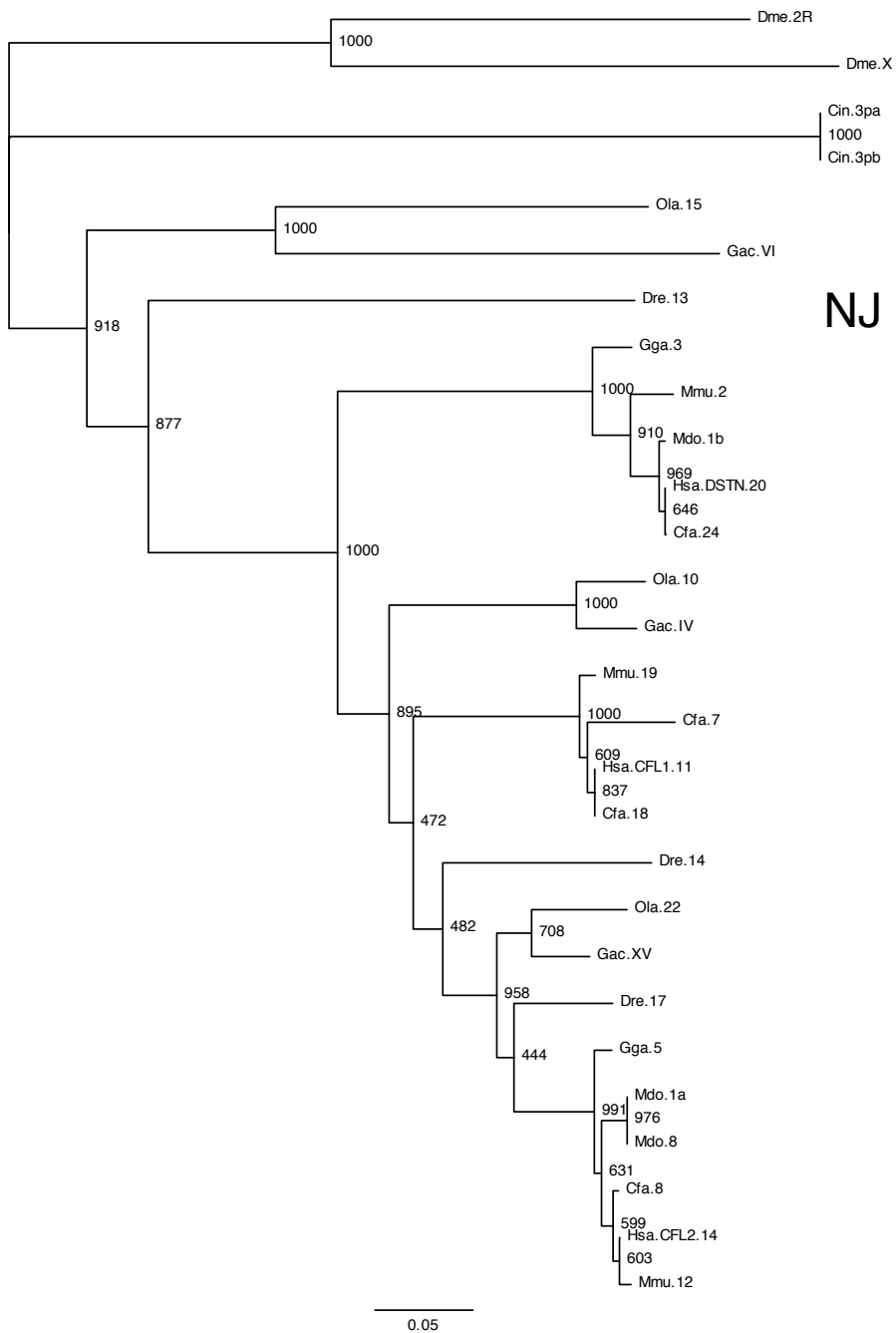


Figure S5. CFL

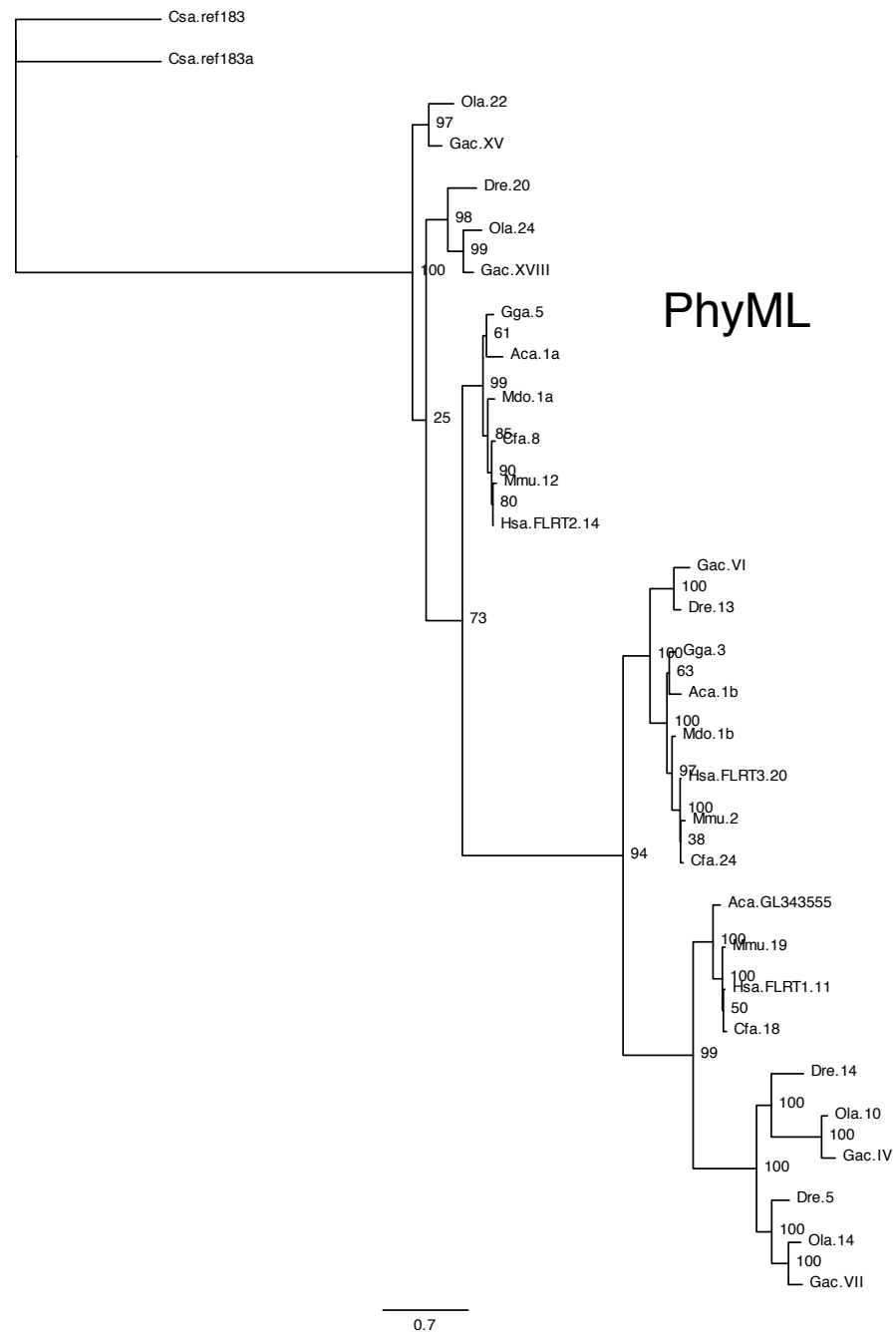
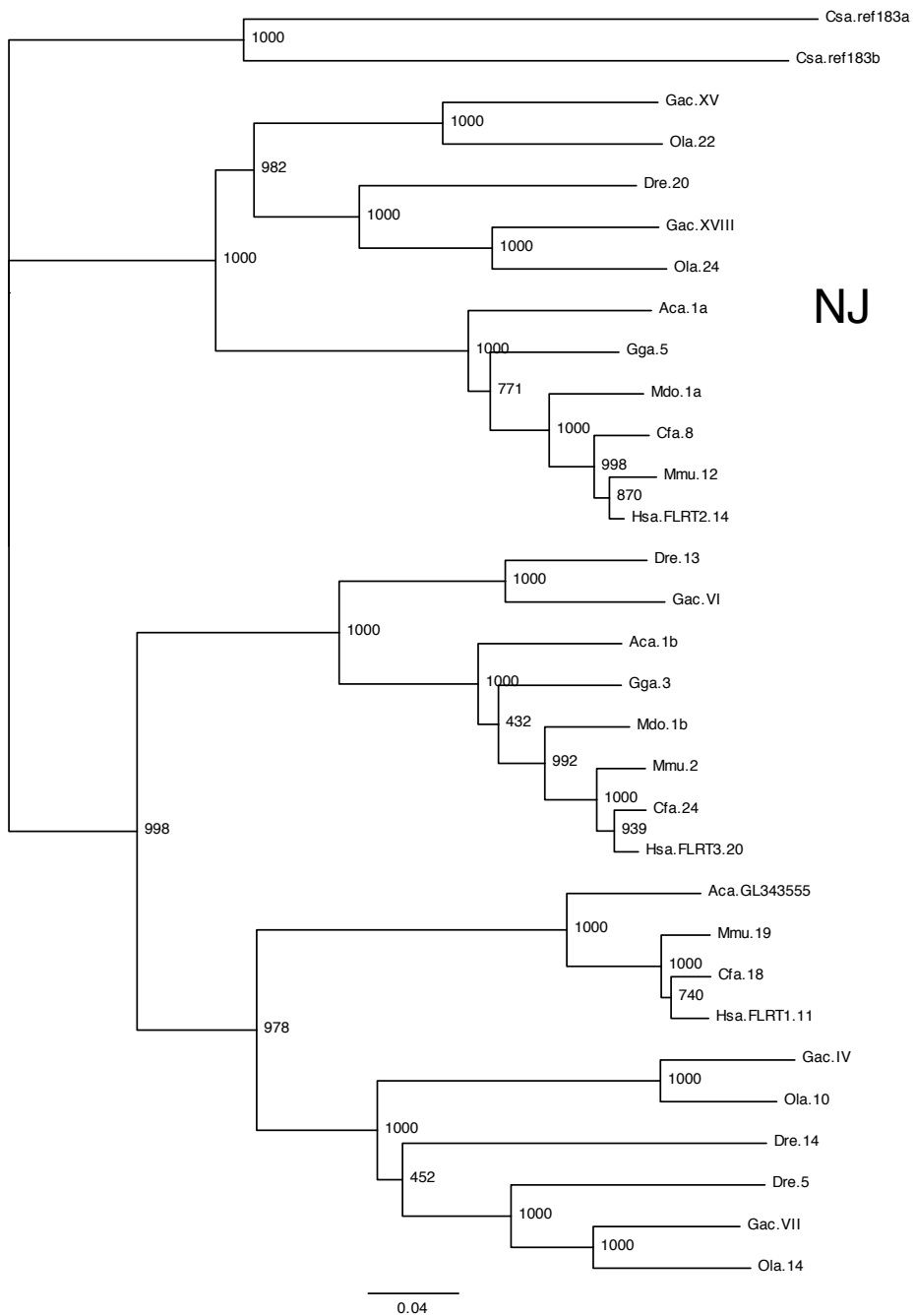


Figure S6. FLRT

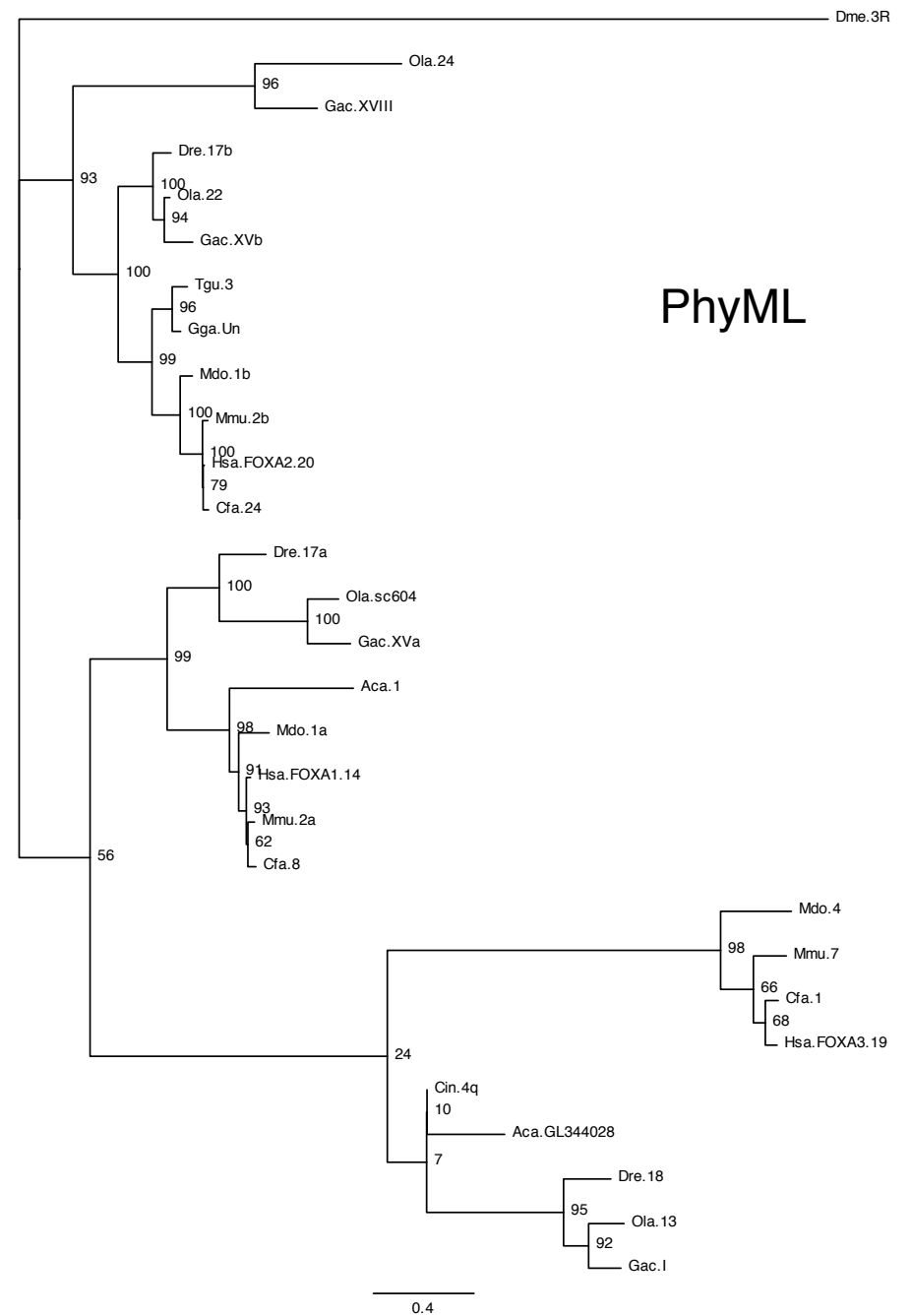
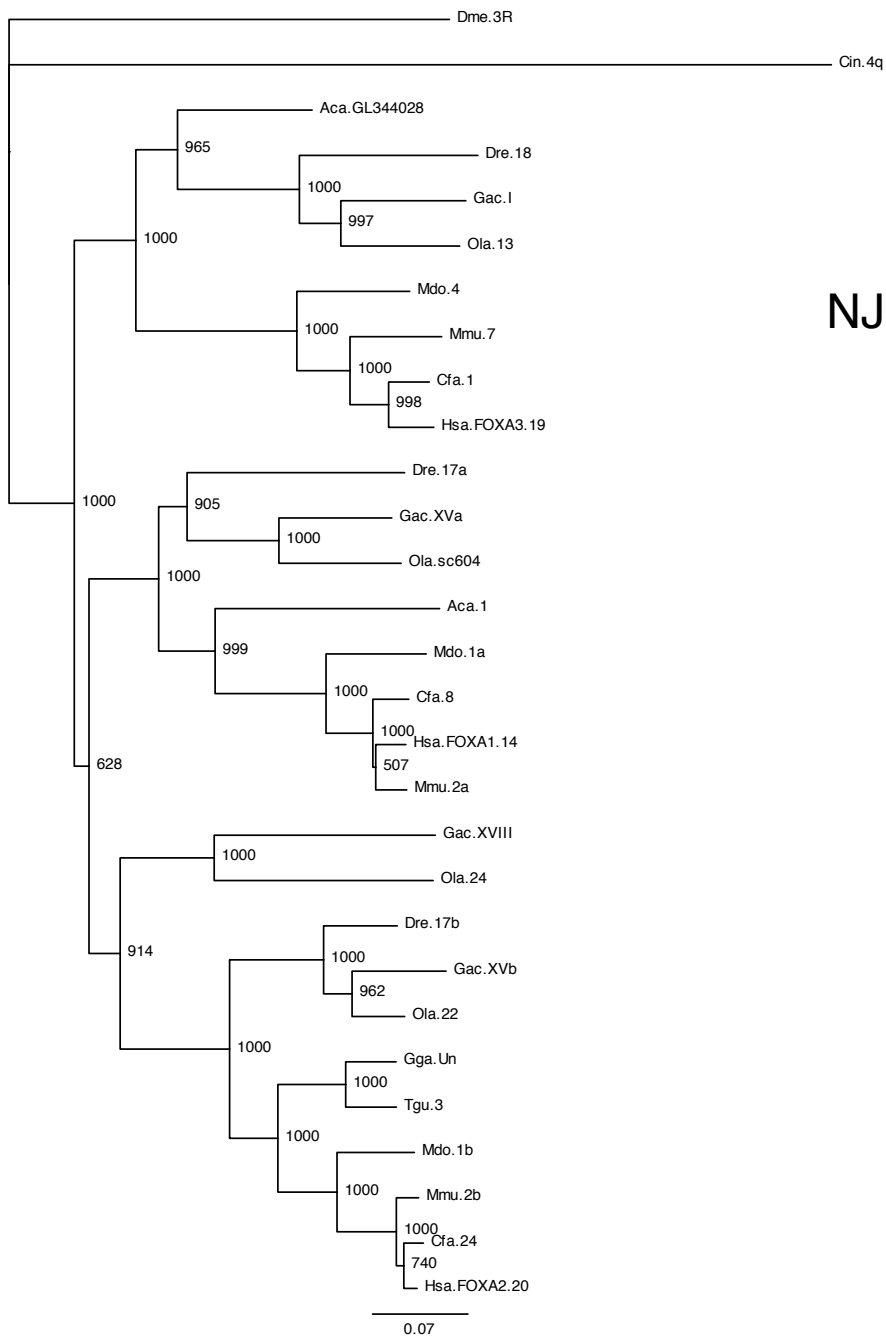


Figure S7. FOXA

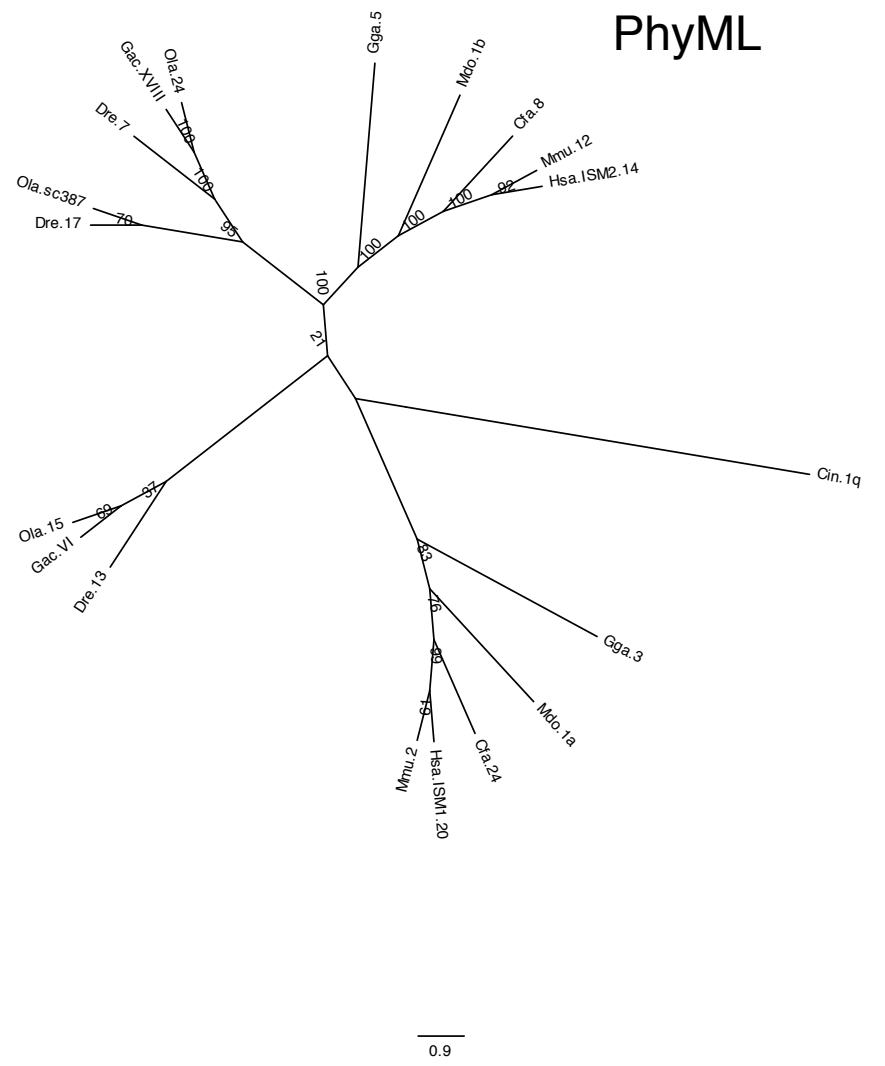
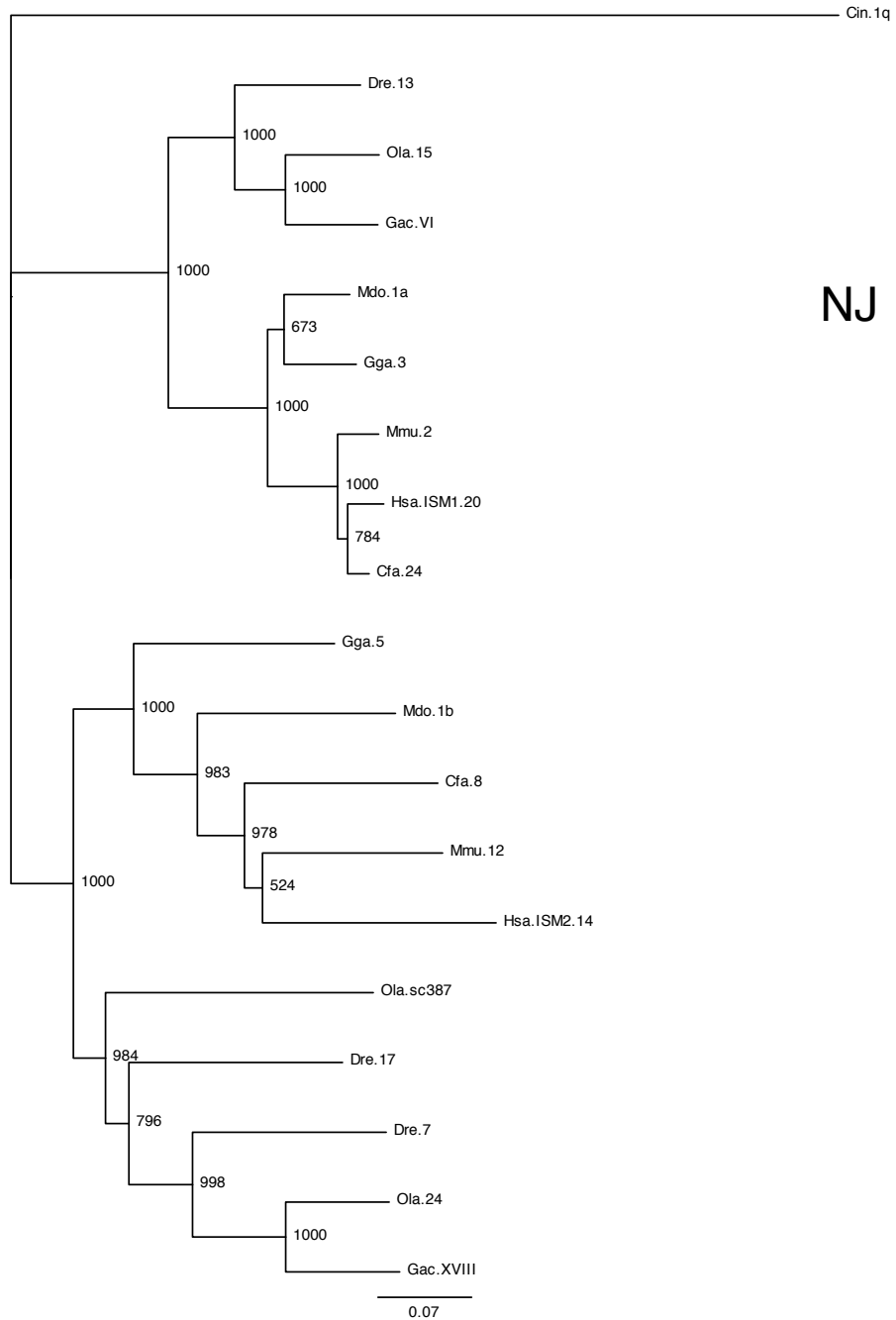


Figure S8. ISM

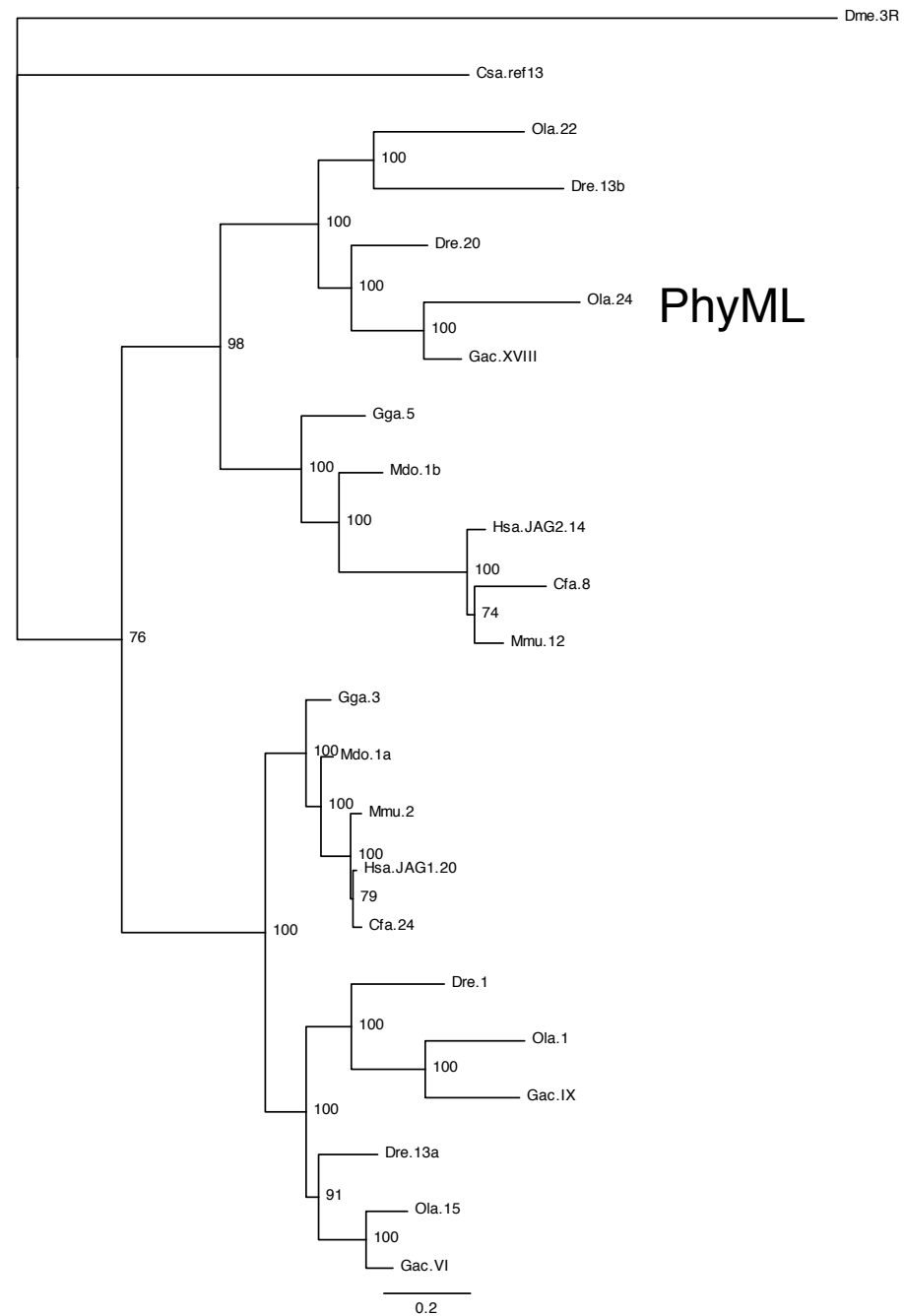
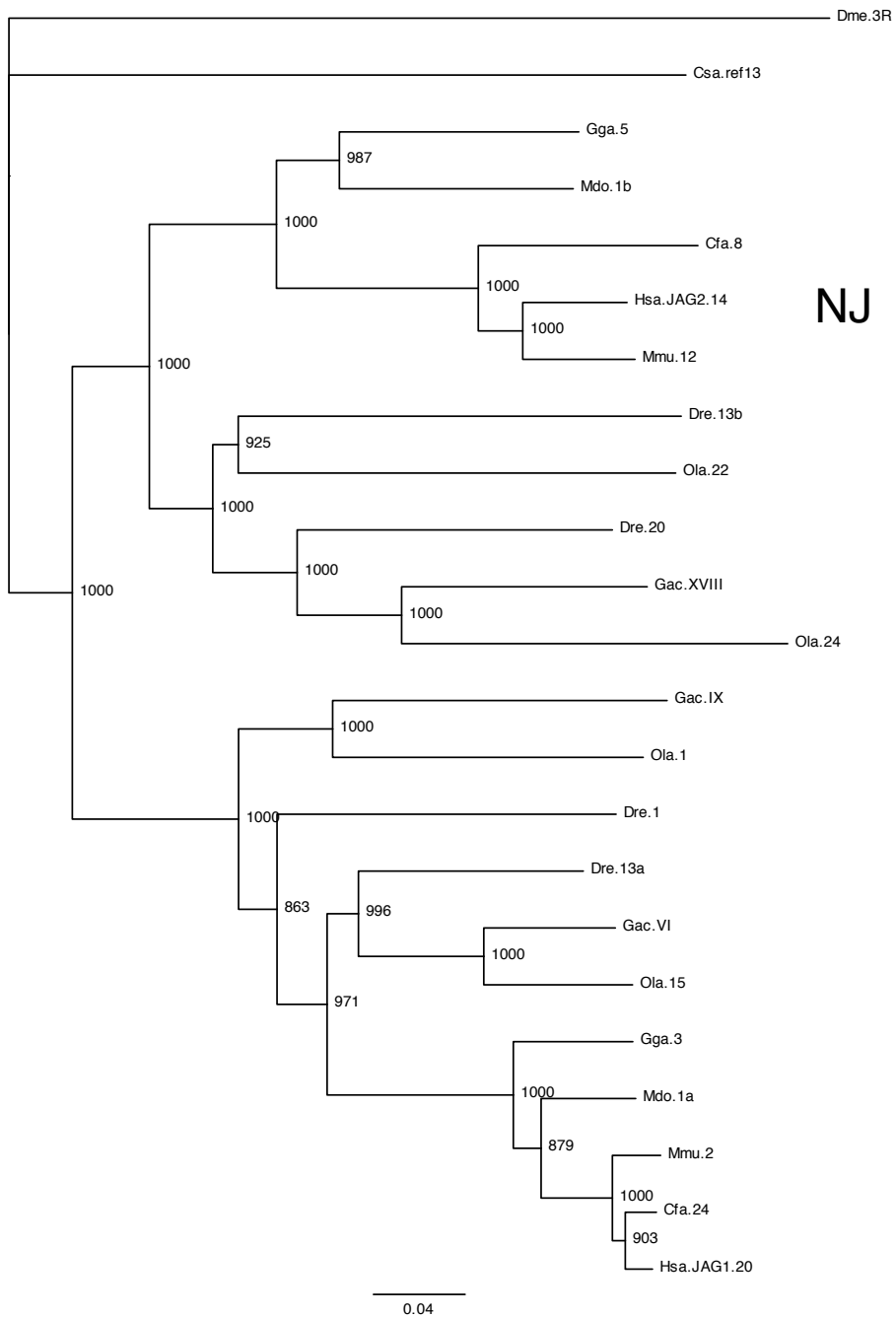


Figure S9. JAG

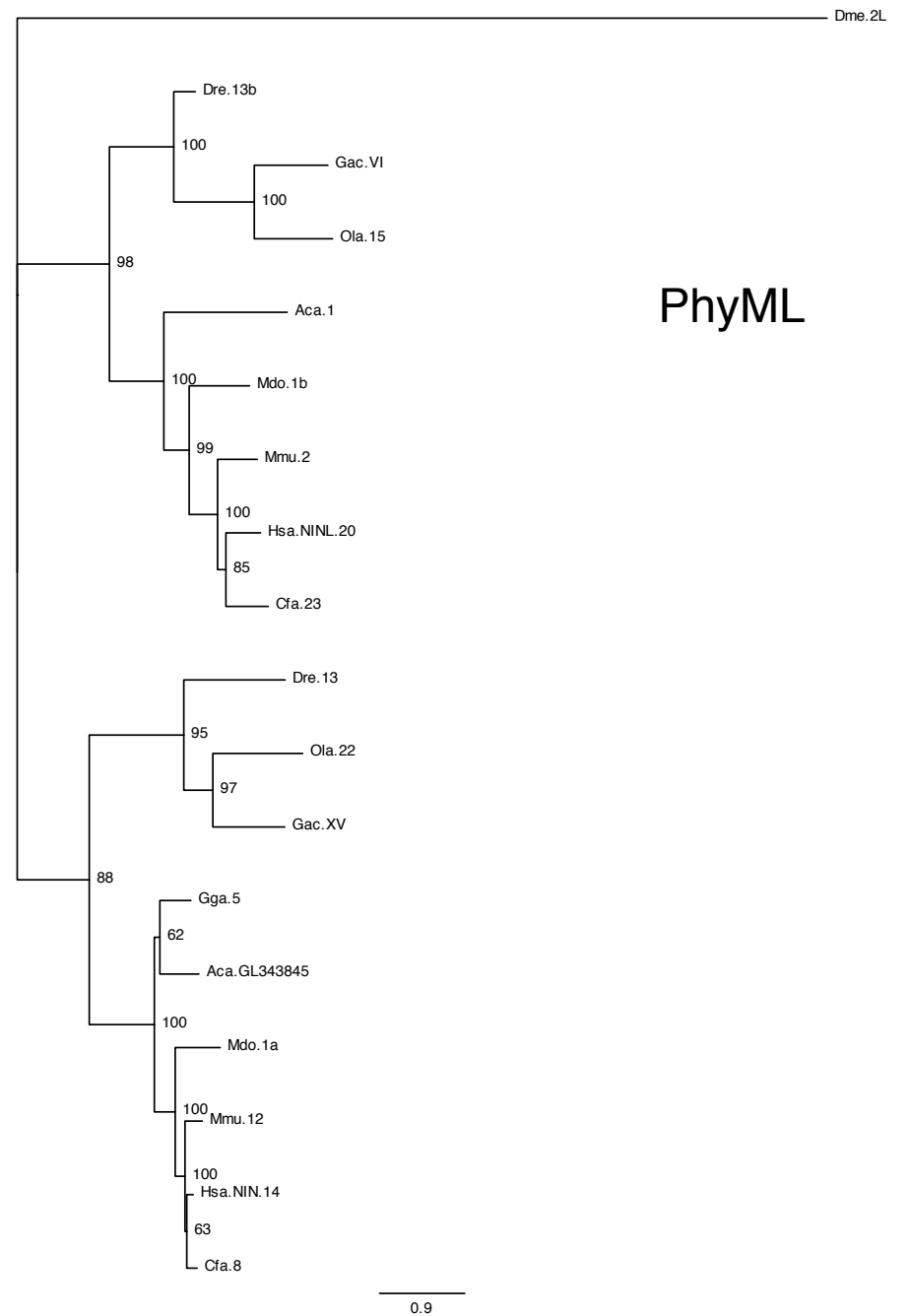
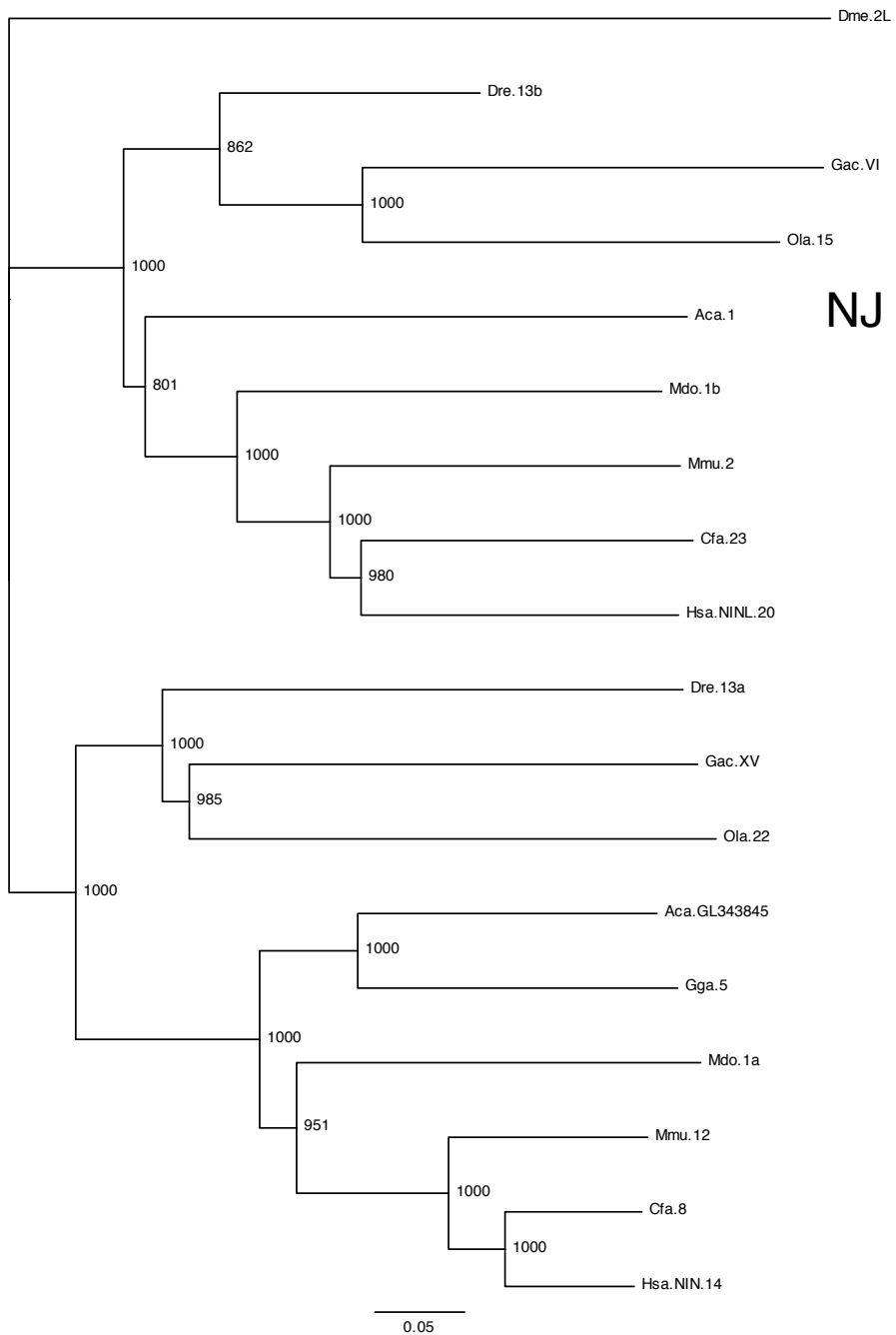


Figure S10. NIN

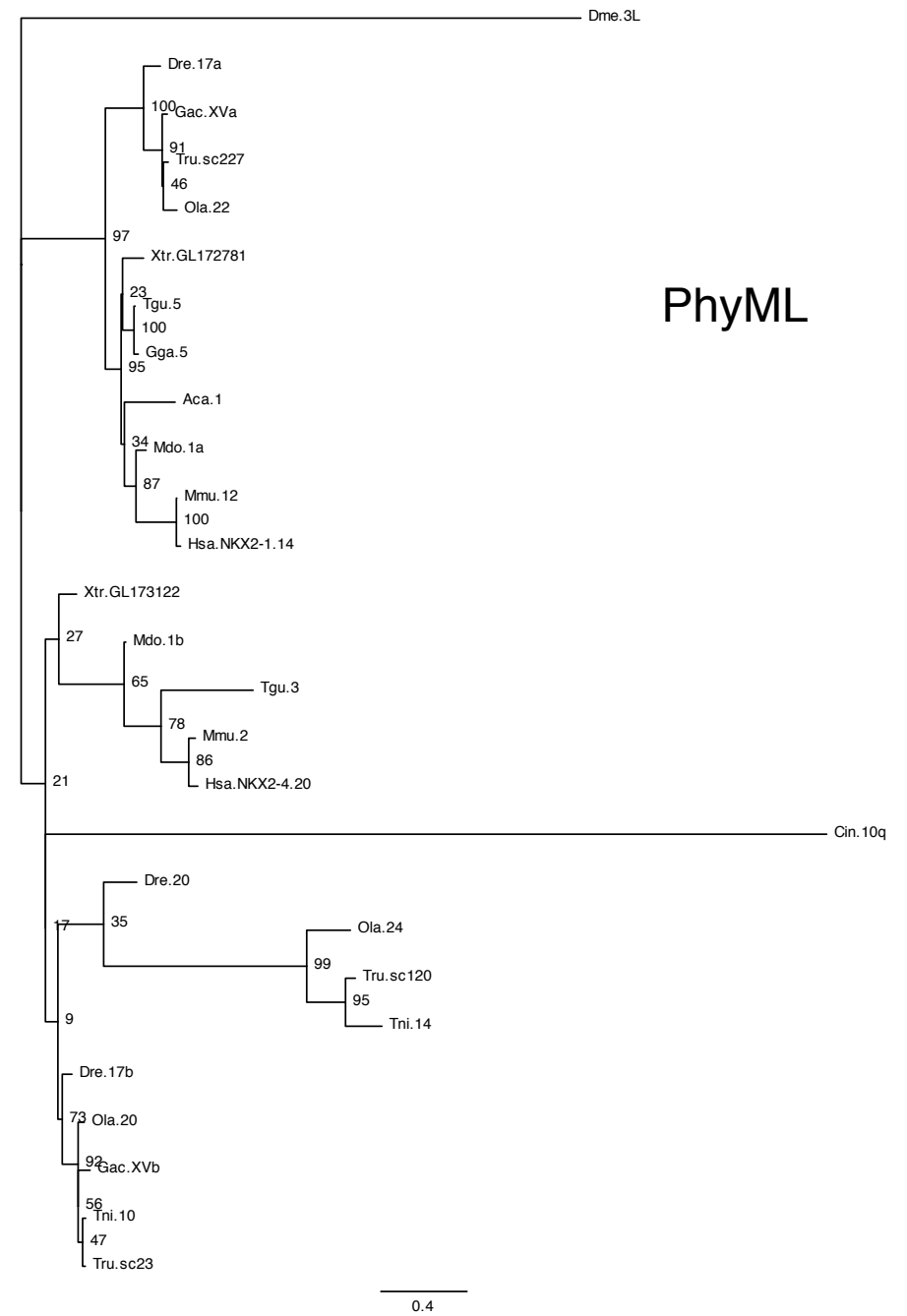
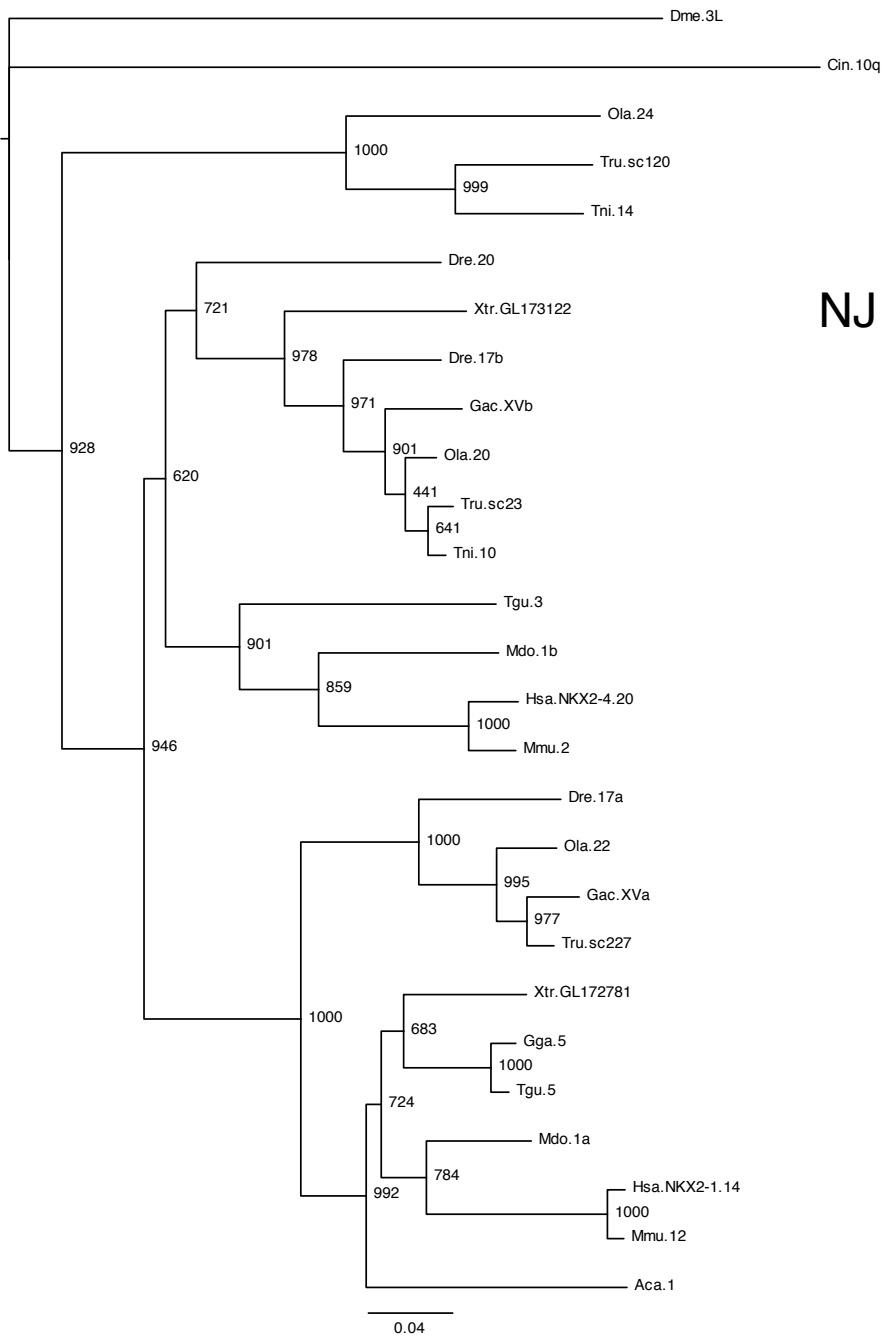


Figure S11. NKX2

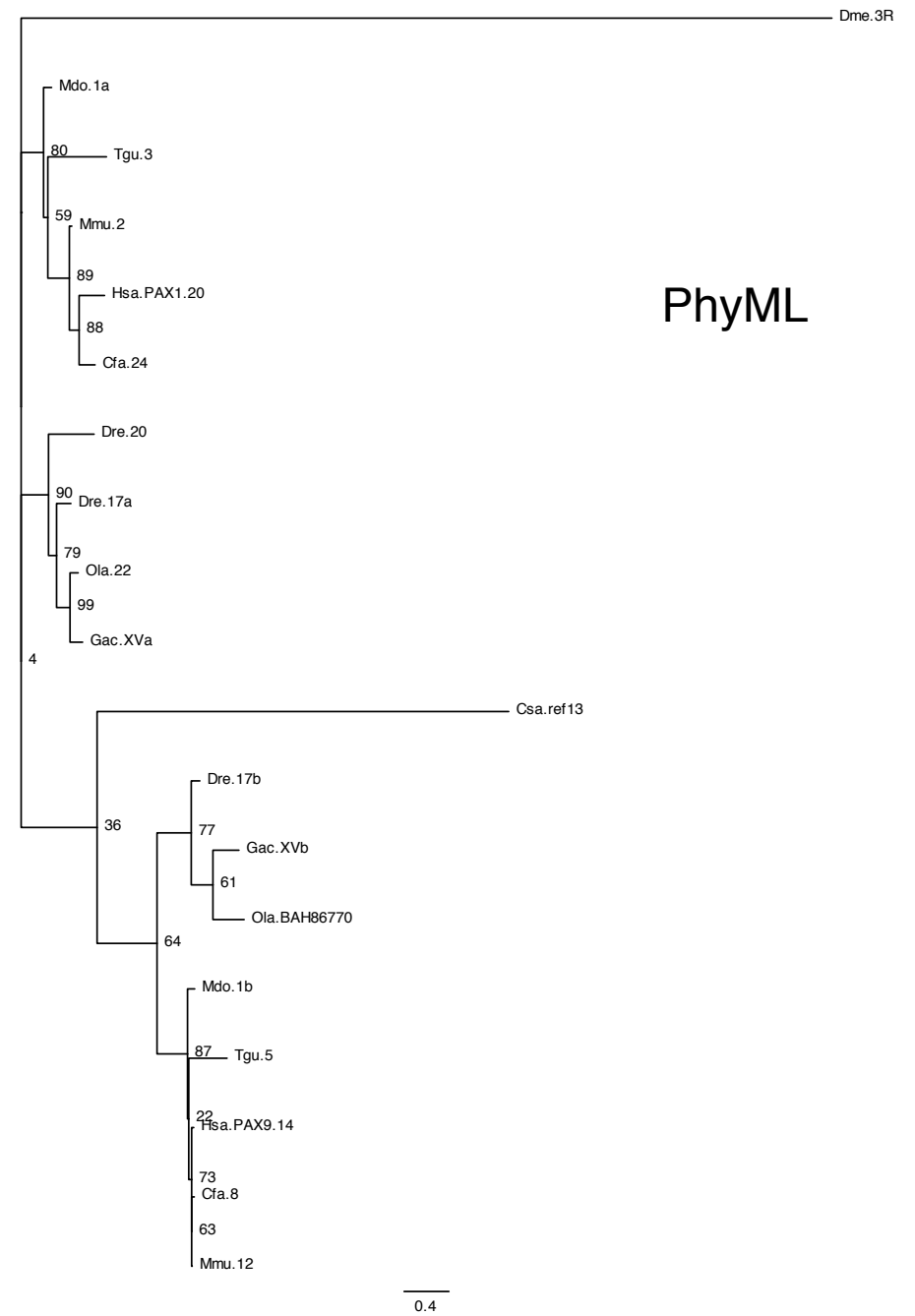
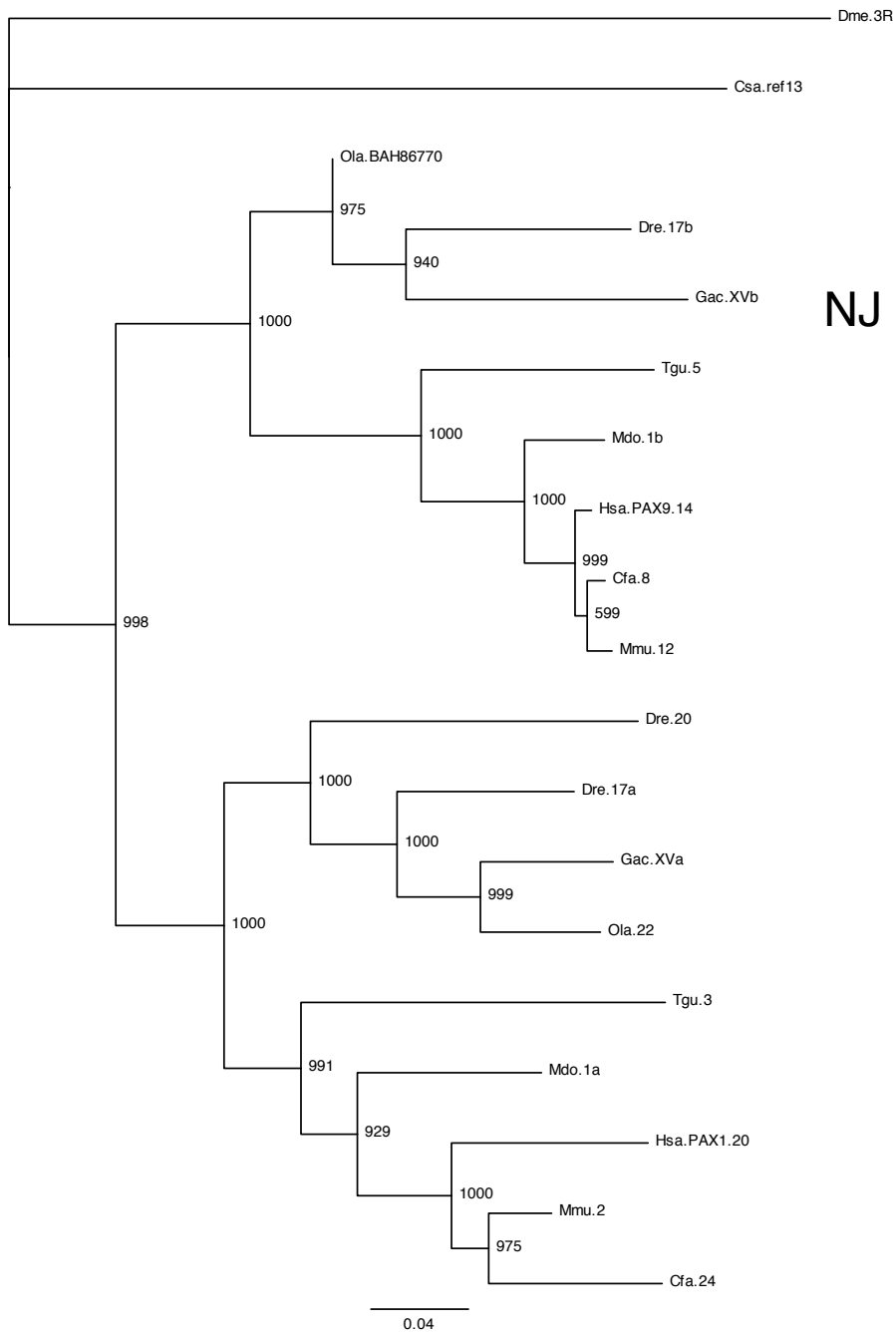
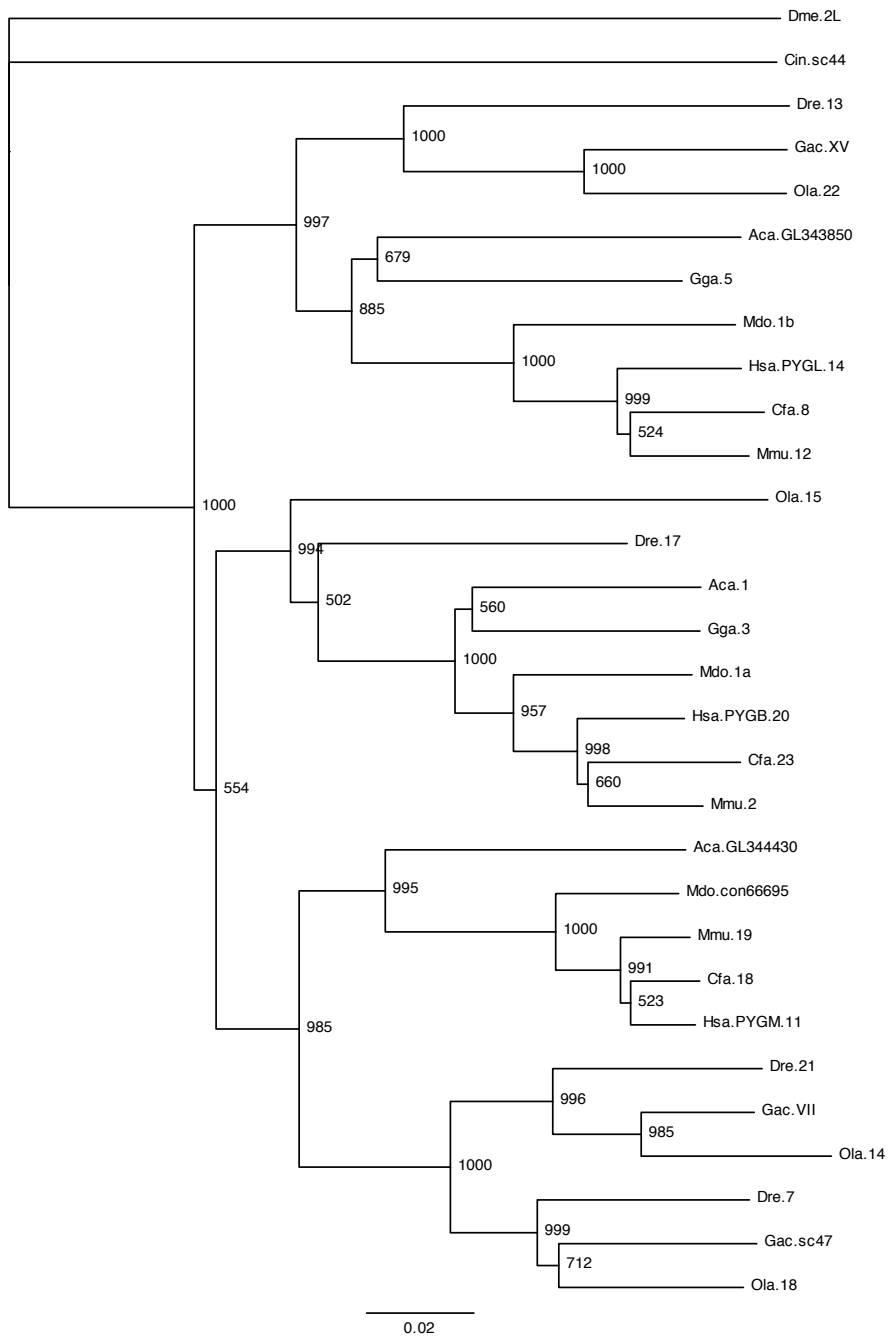
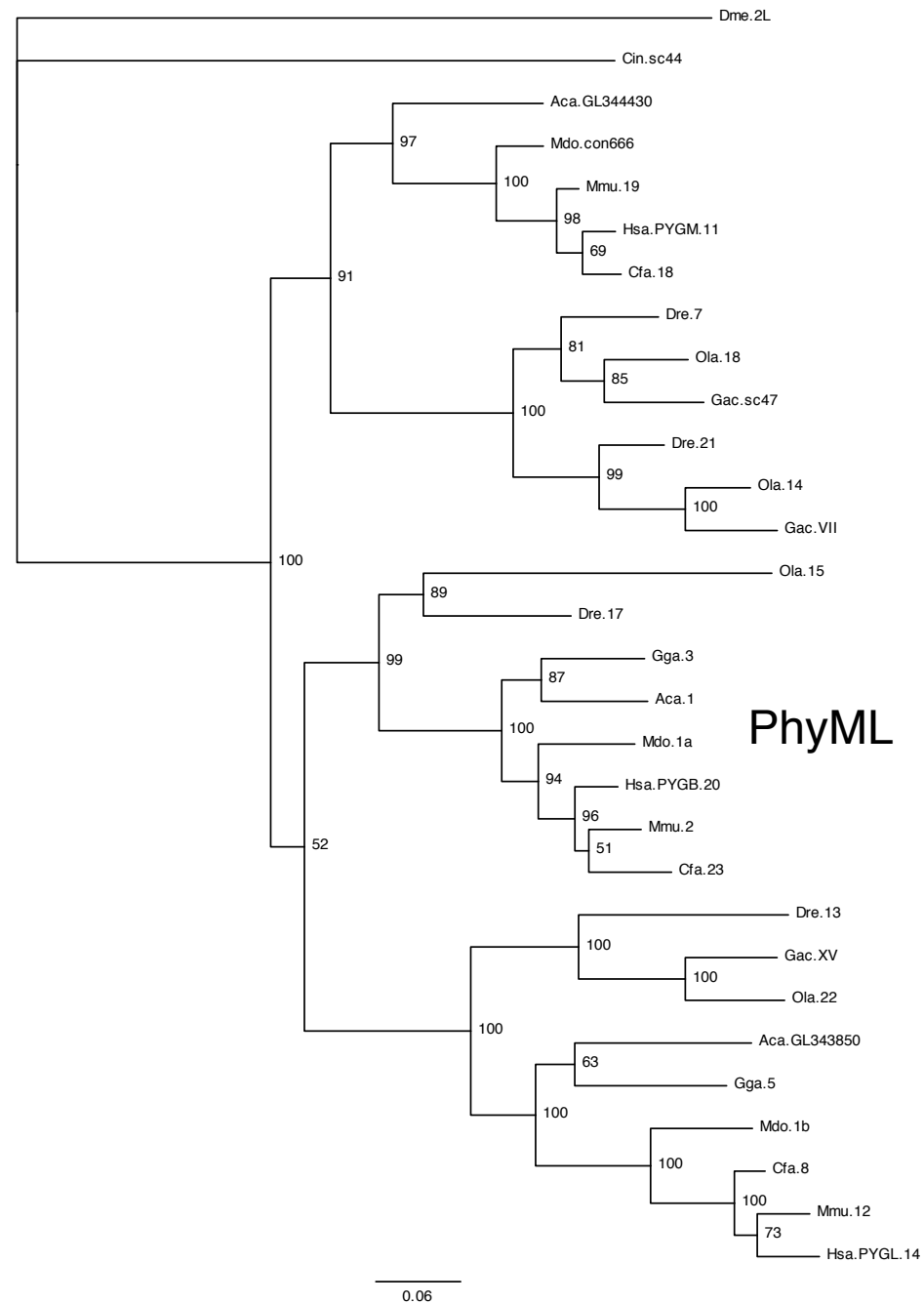


Figure S12. PAX



NJ



PhyML

Figure S13. PYG

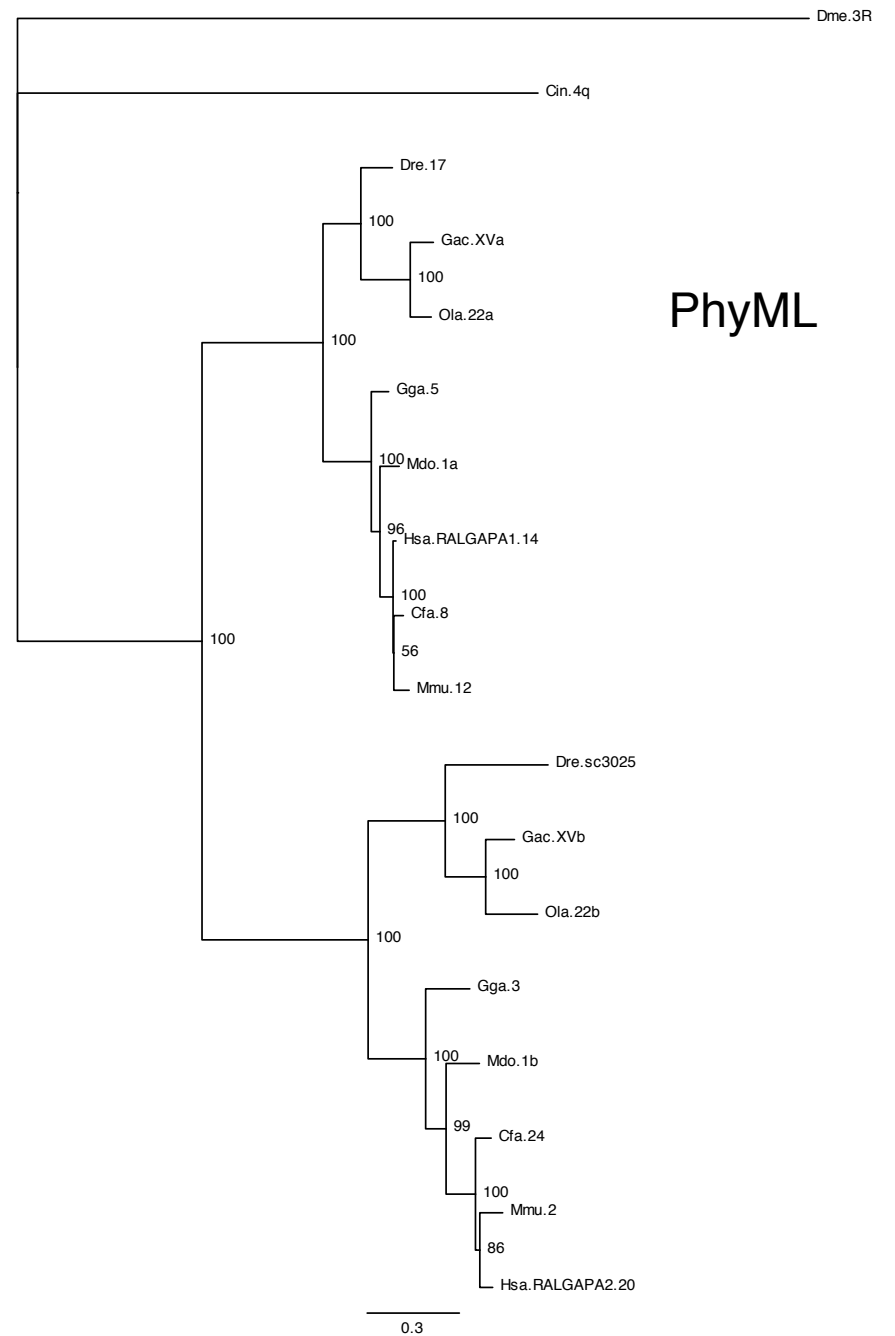
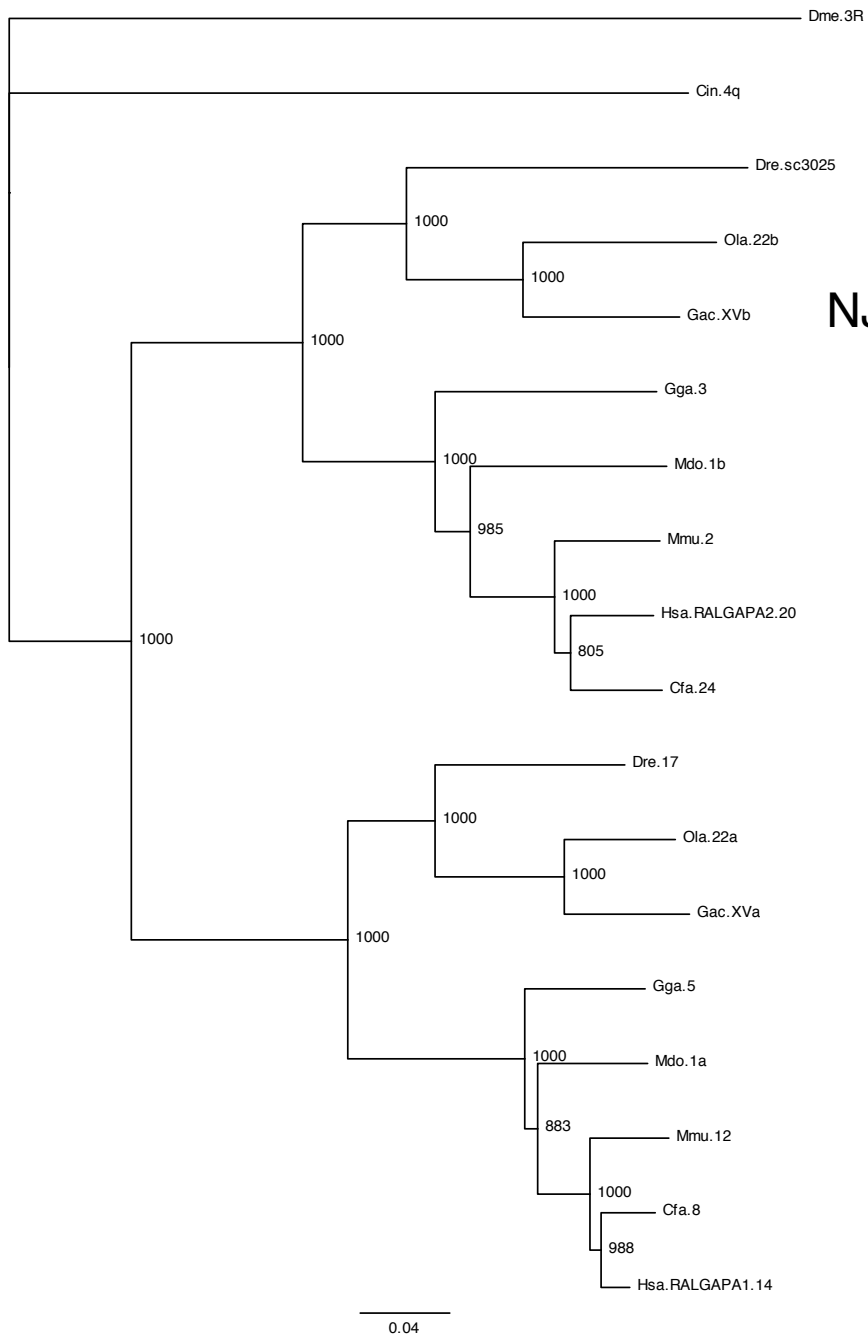
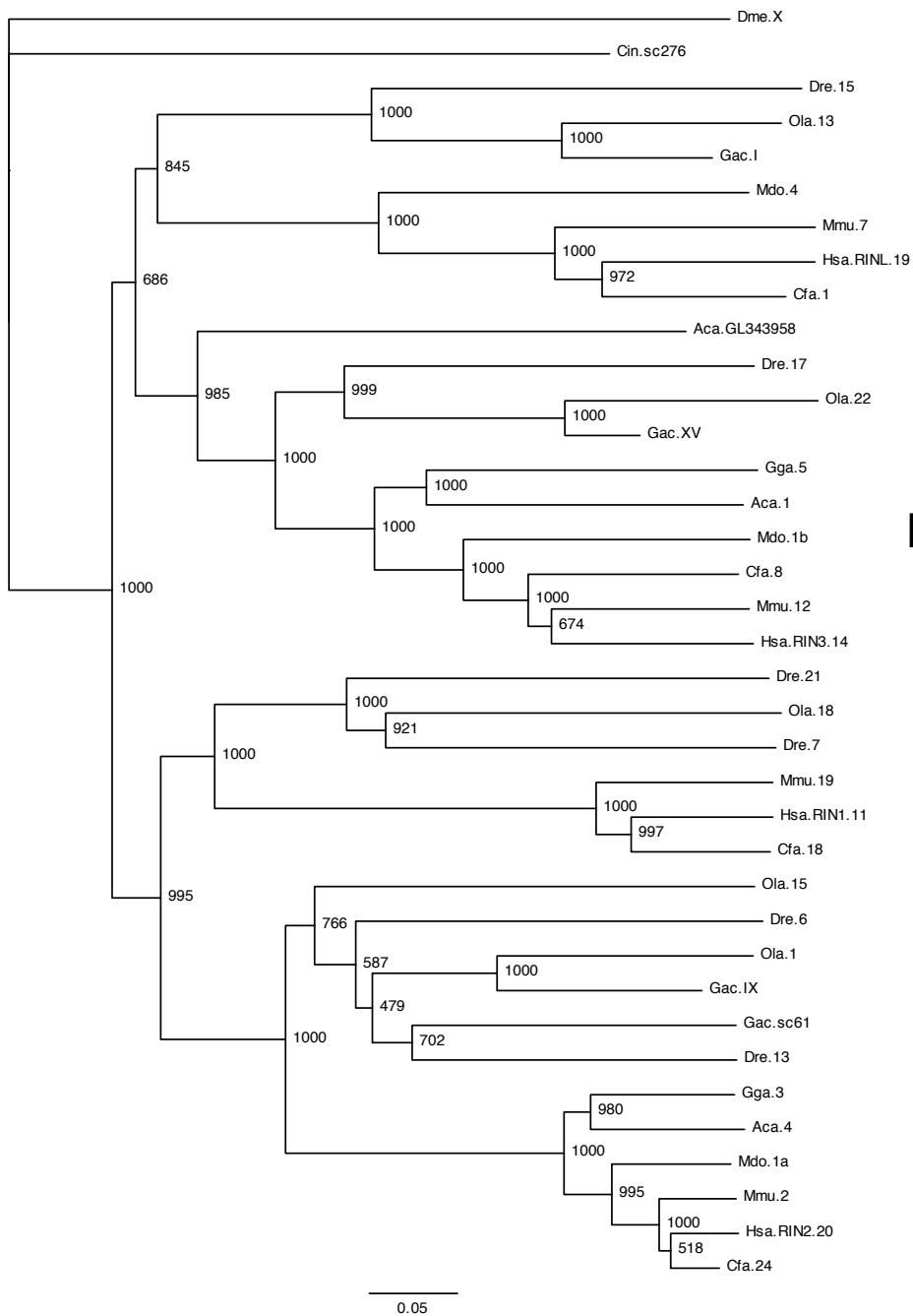
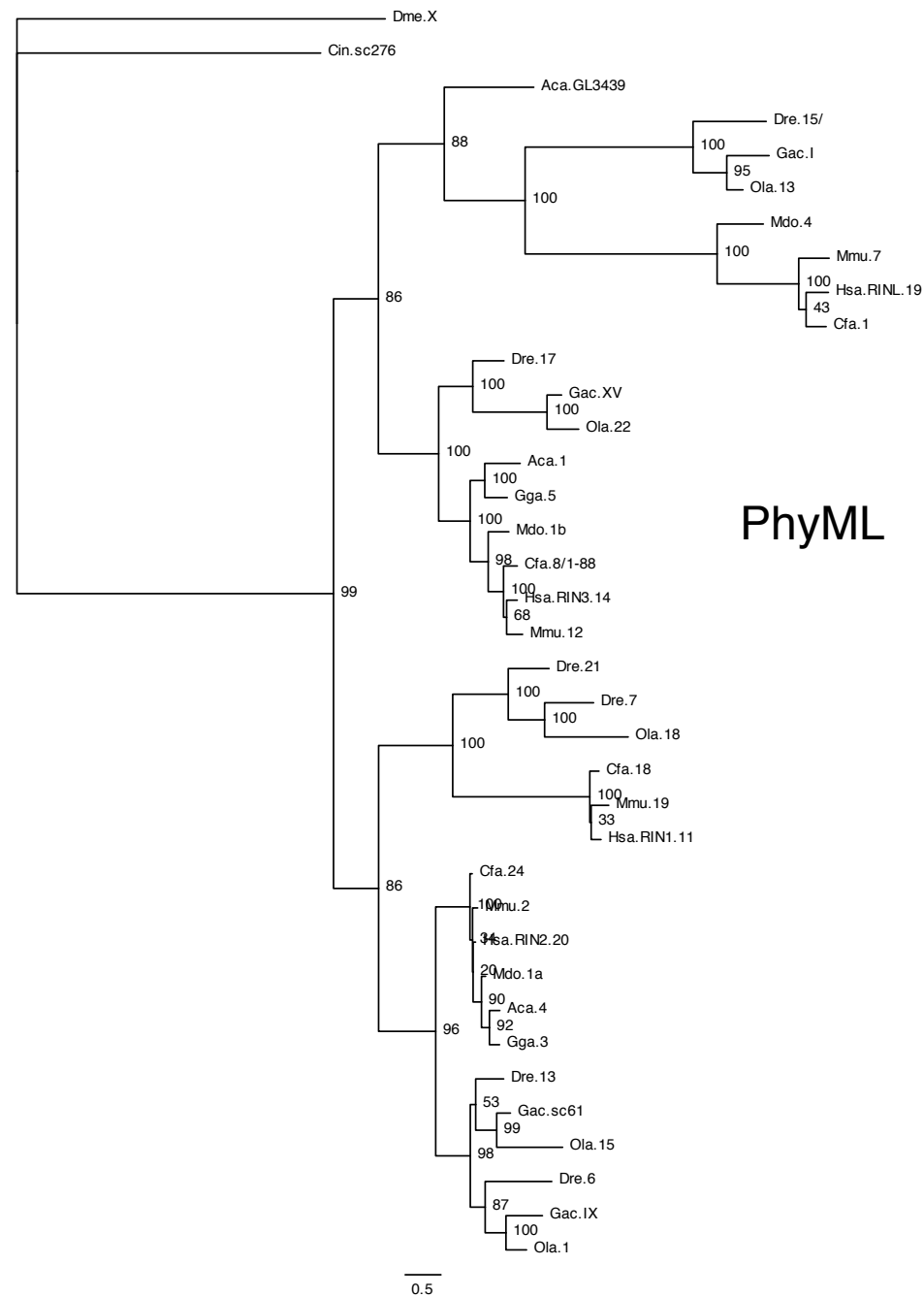


Figure S14. RALGAPA



NJ



PhyML

Figure S15. RIN

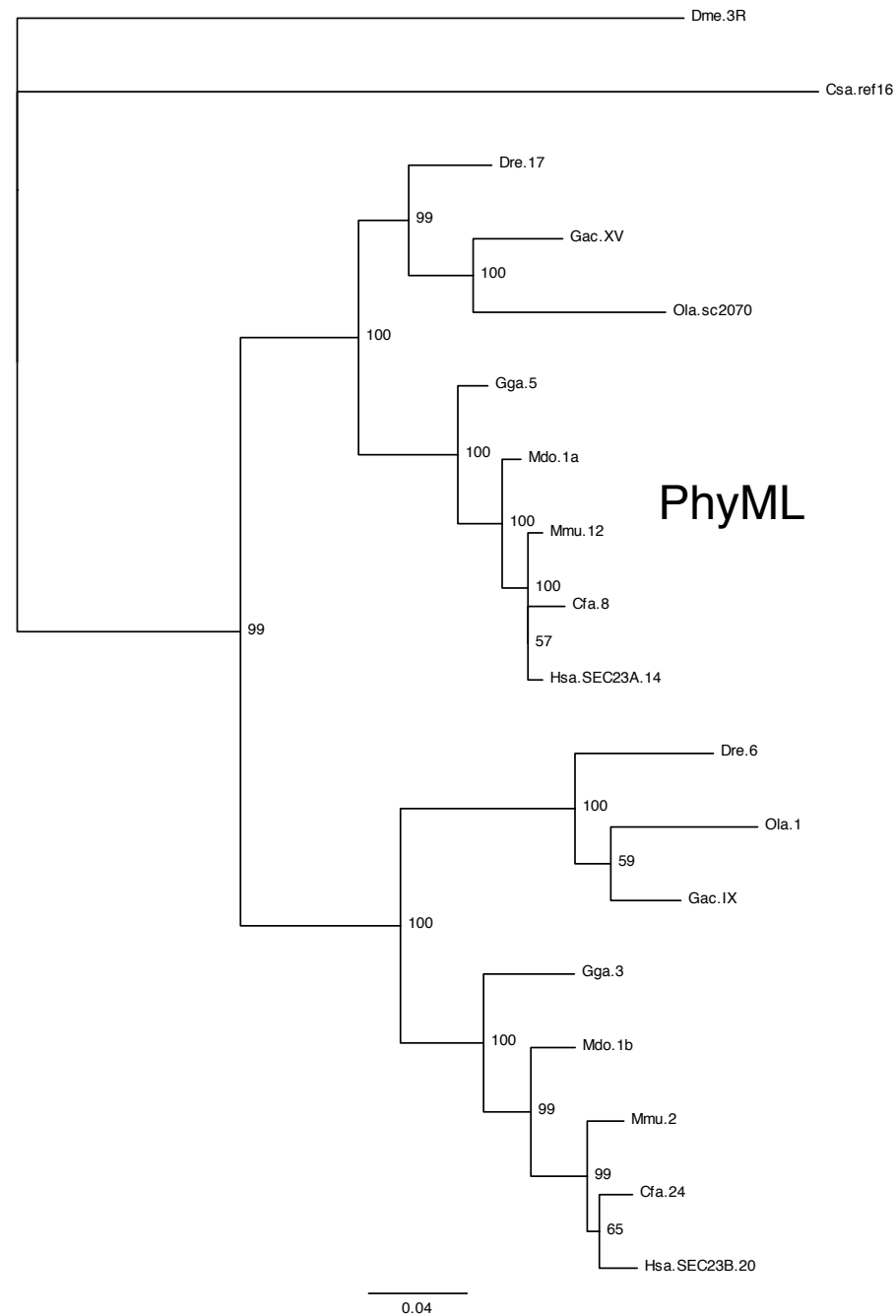
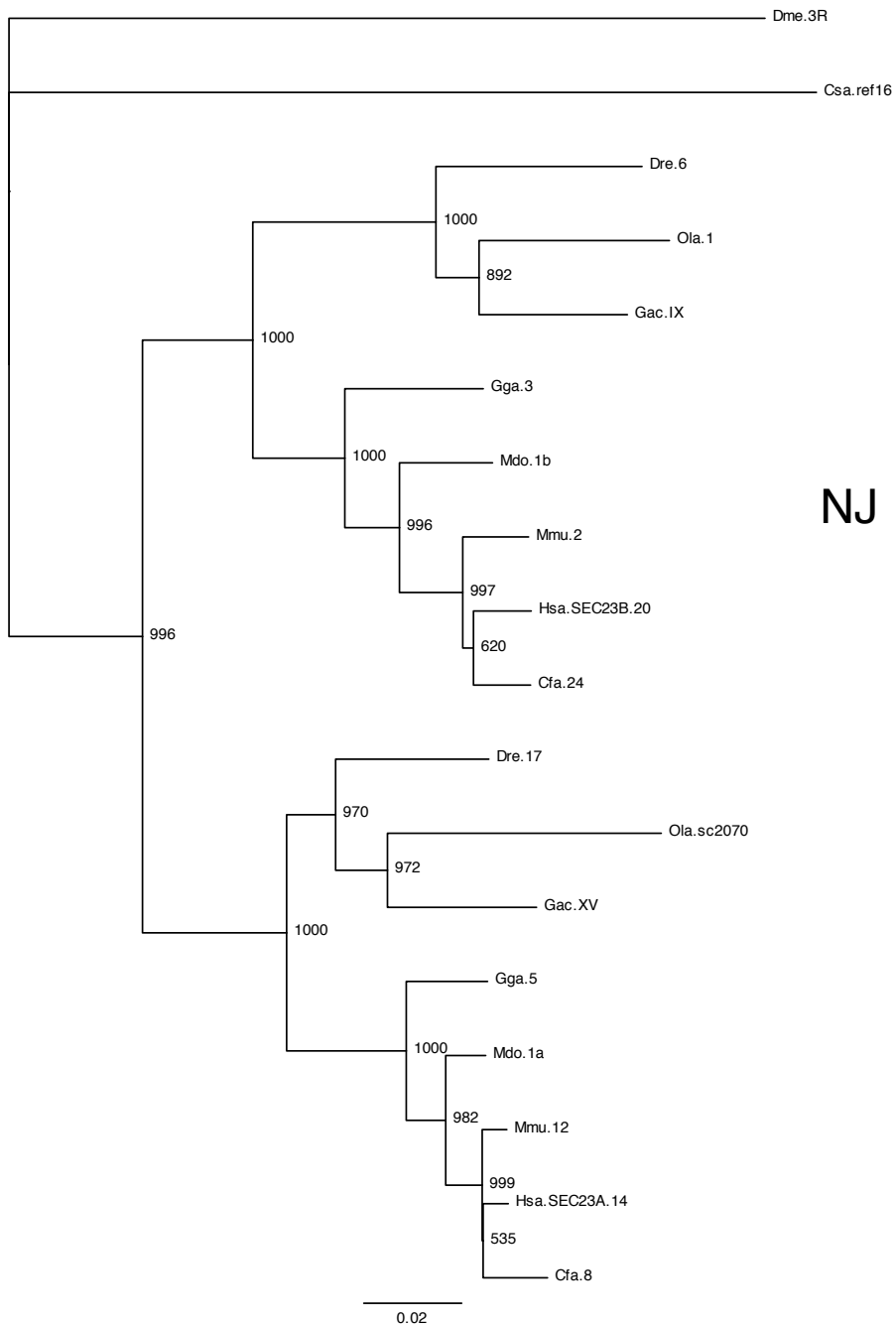


Figure S16. SEC23

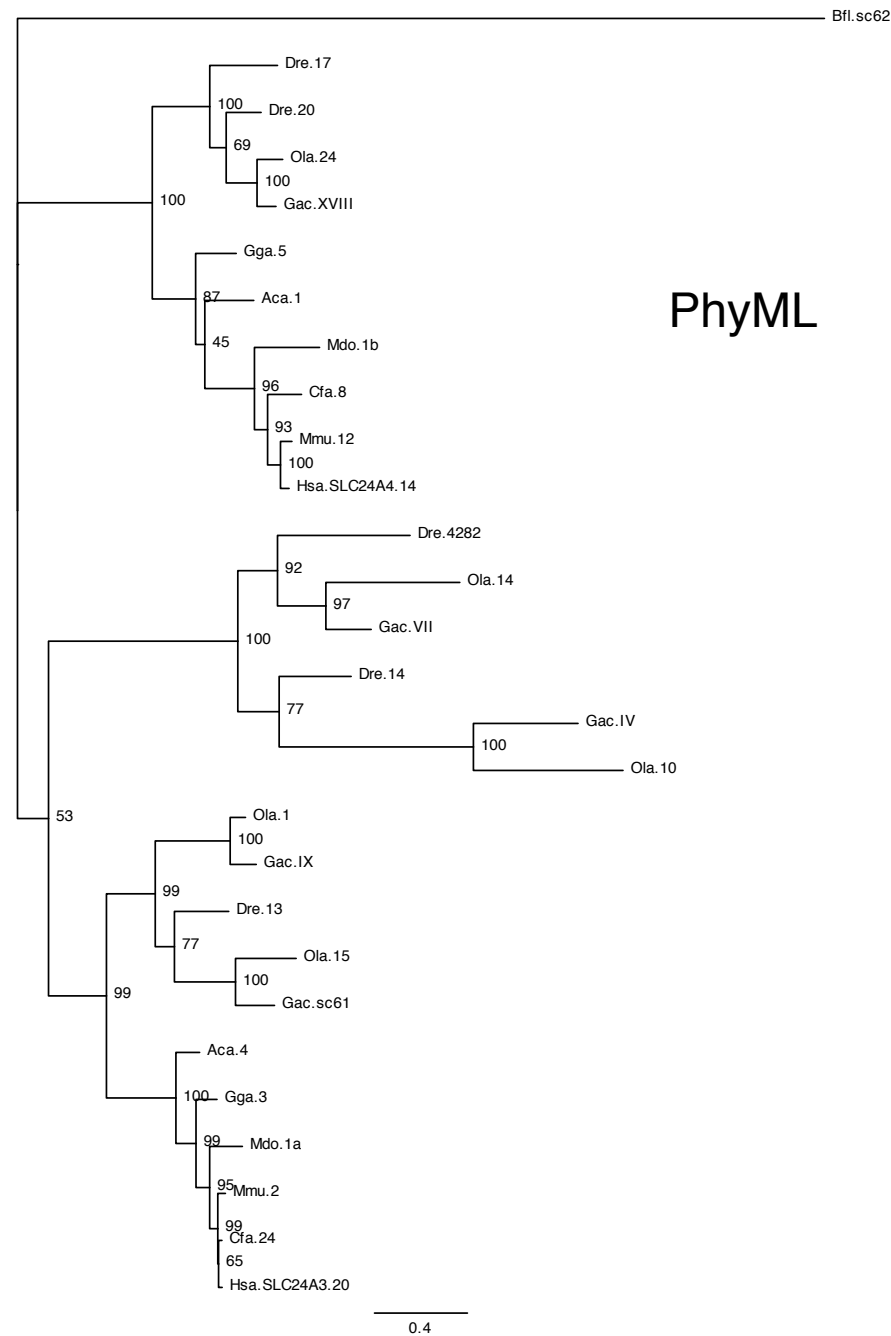
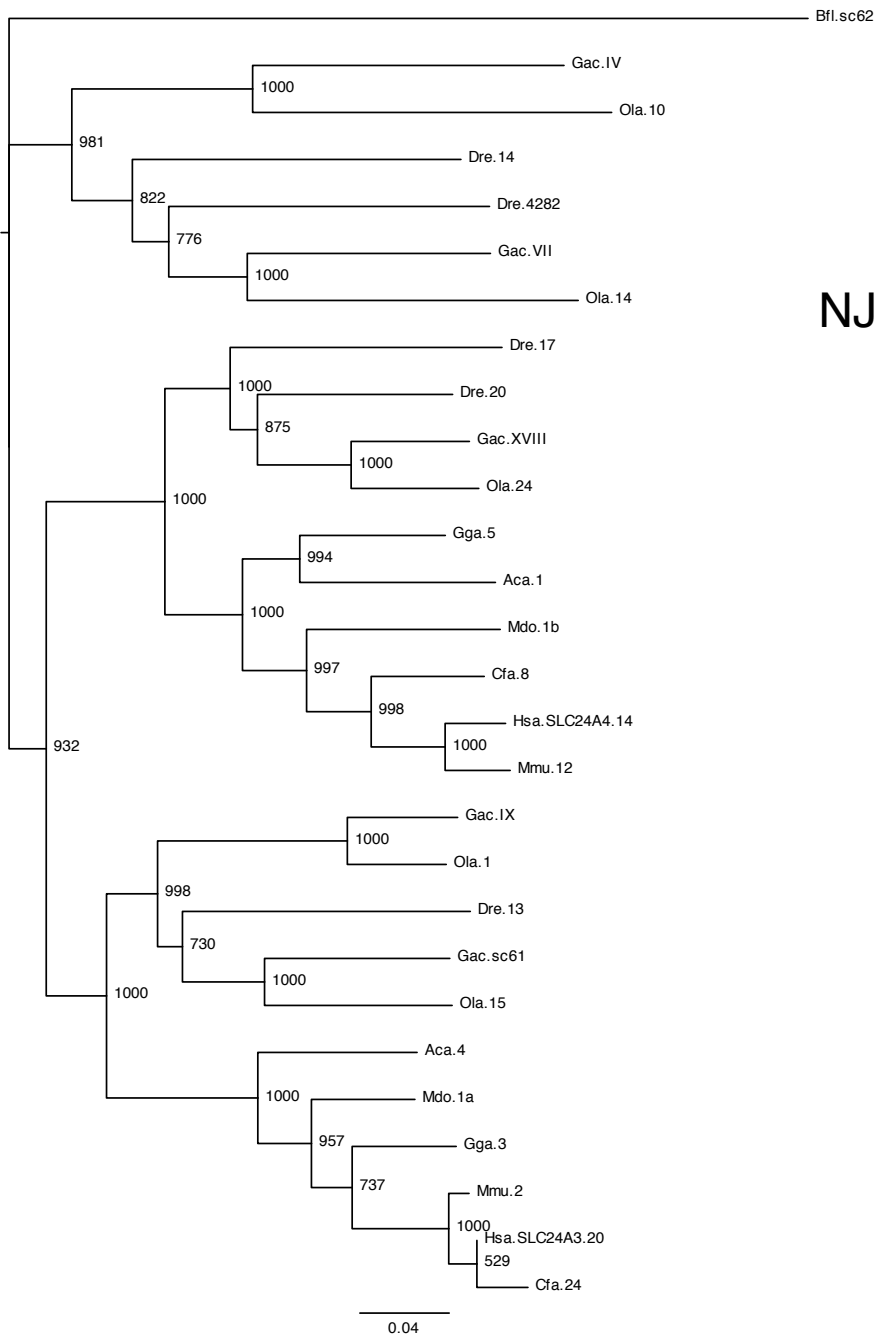


Figure S17. SLC24A

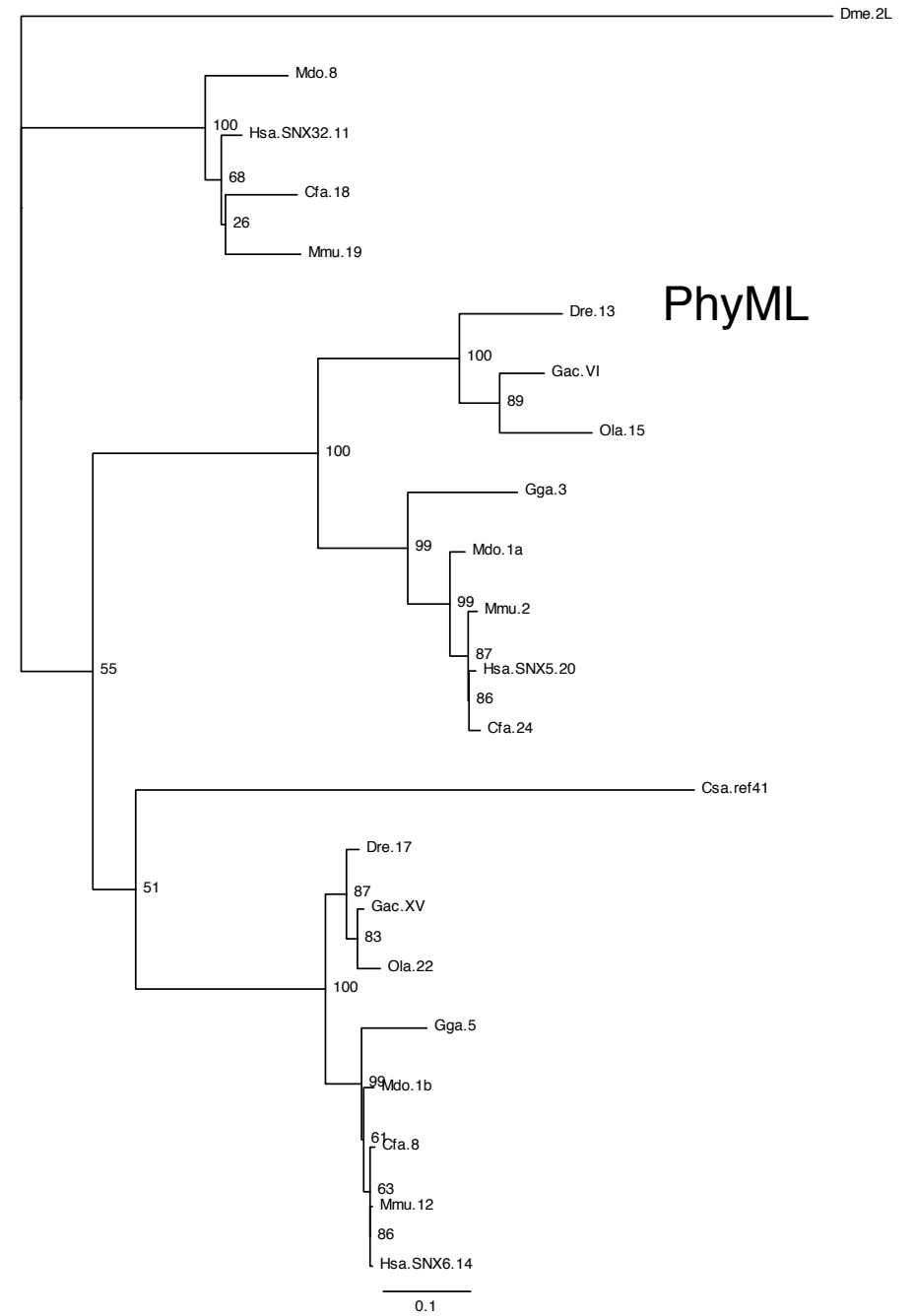
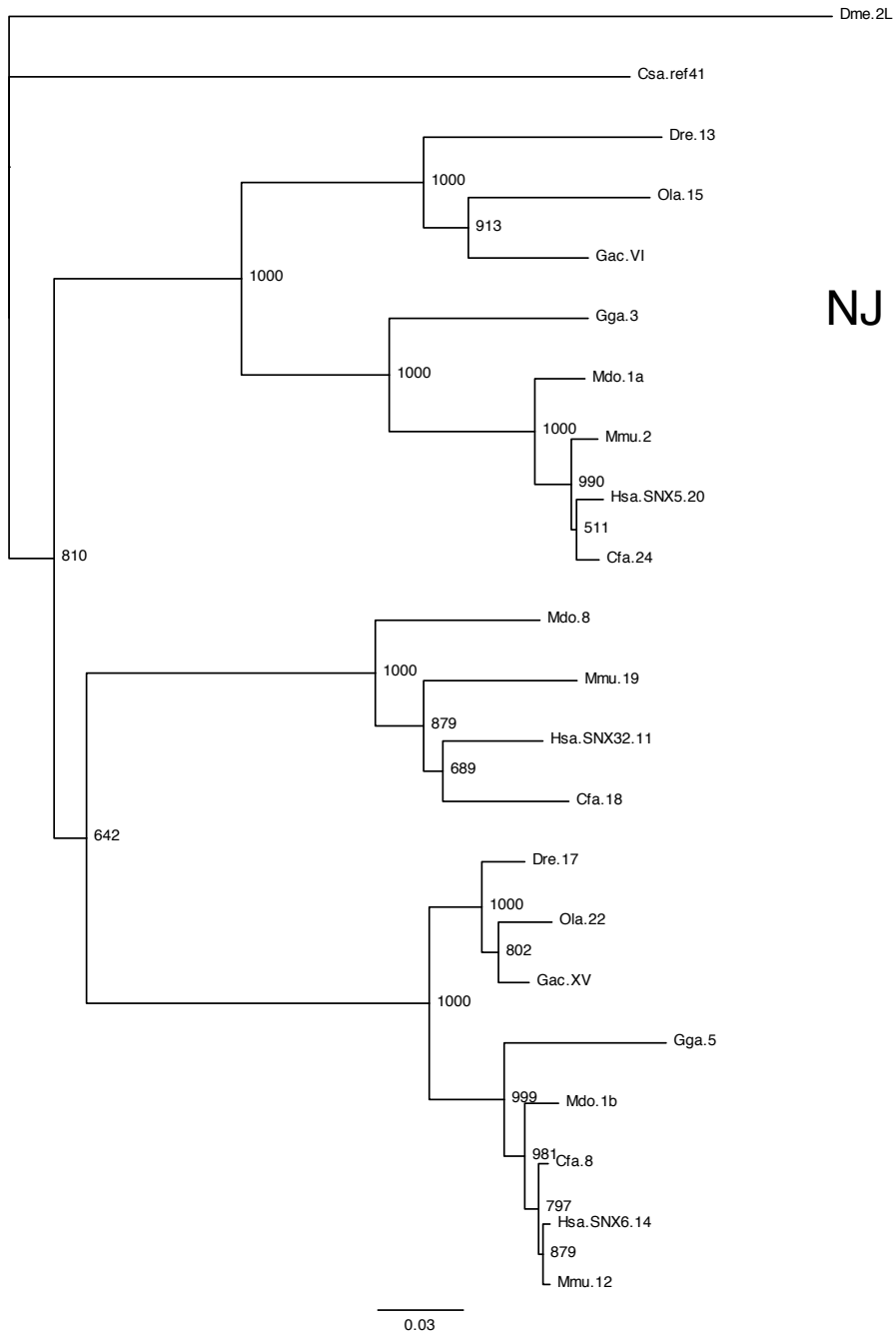


Figure S18. SNX

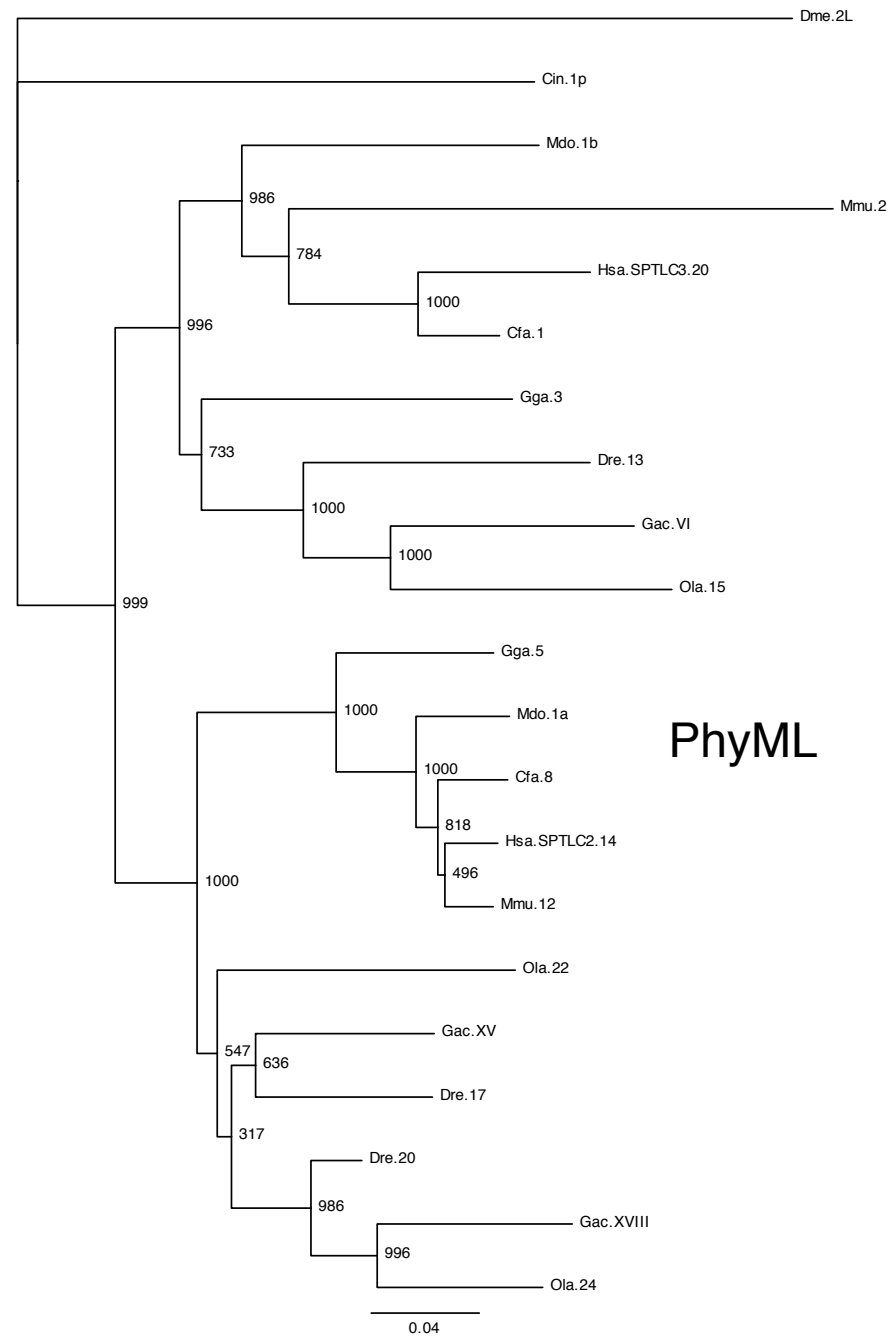
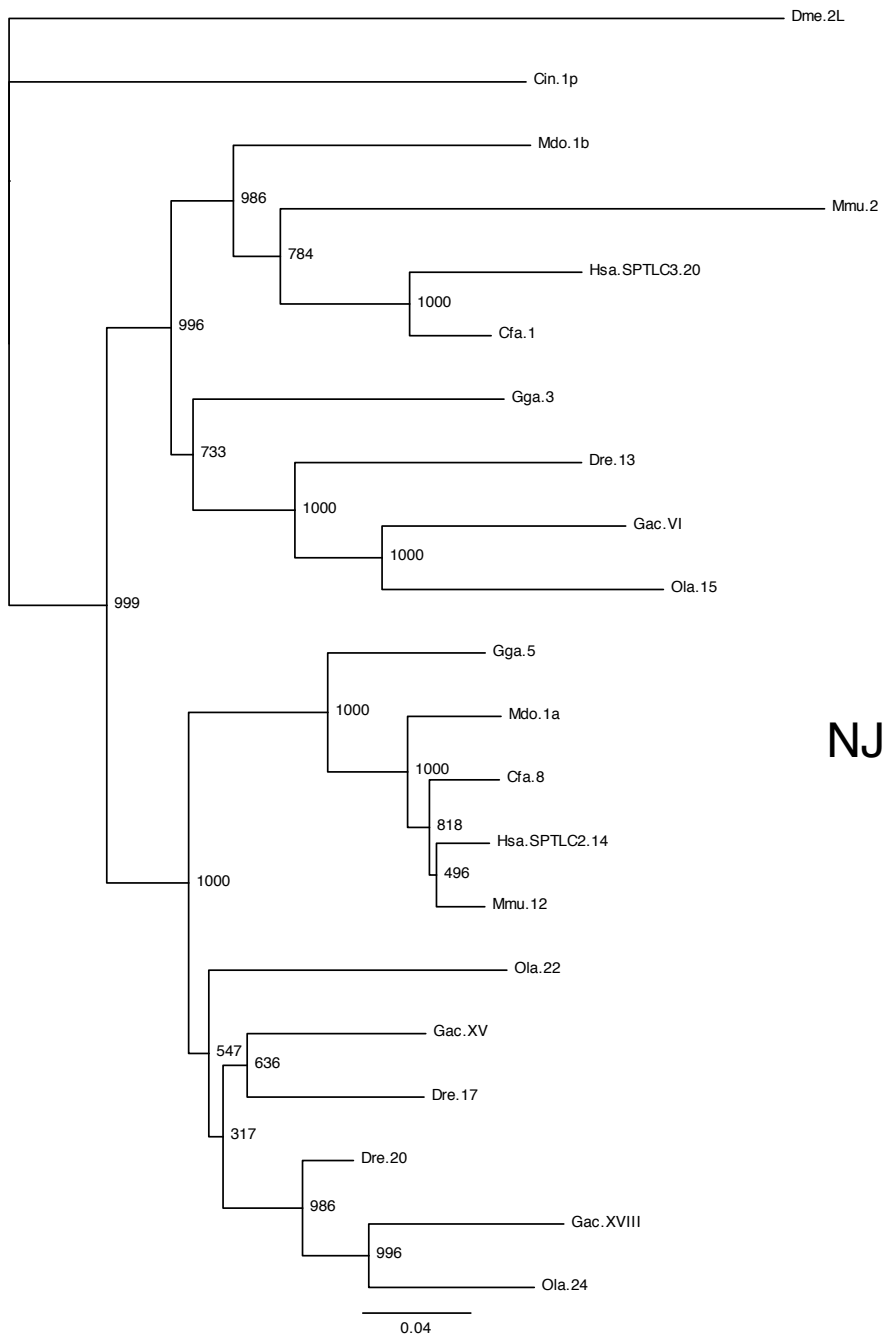


Figure S19. SPTLC

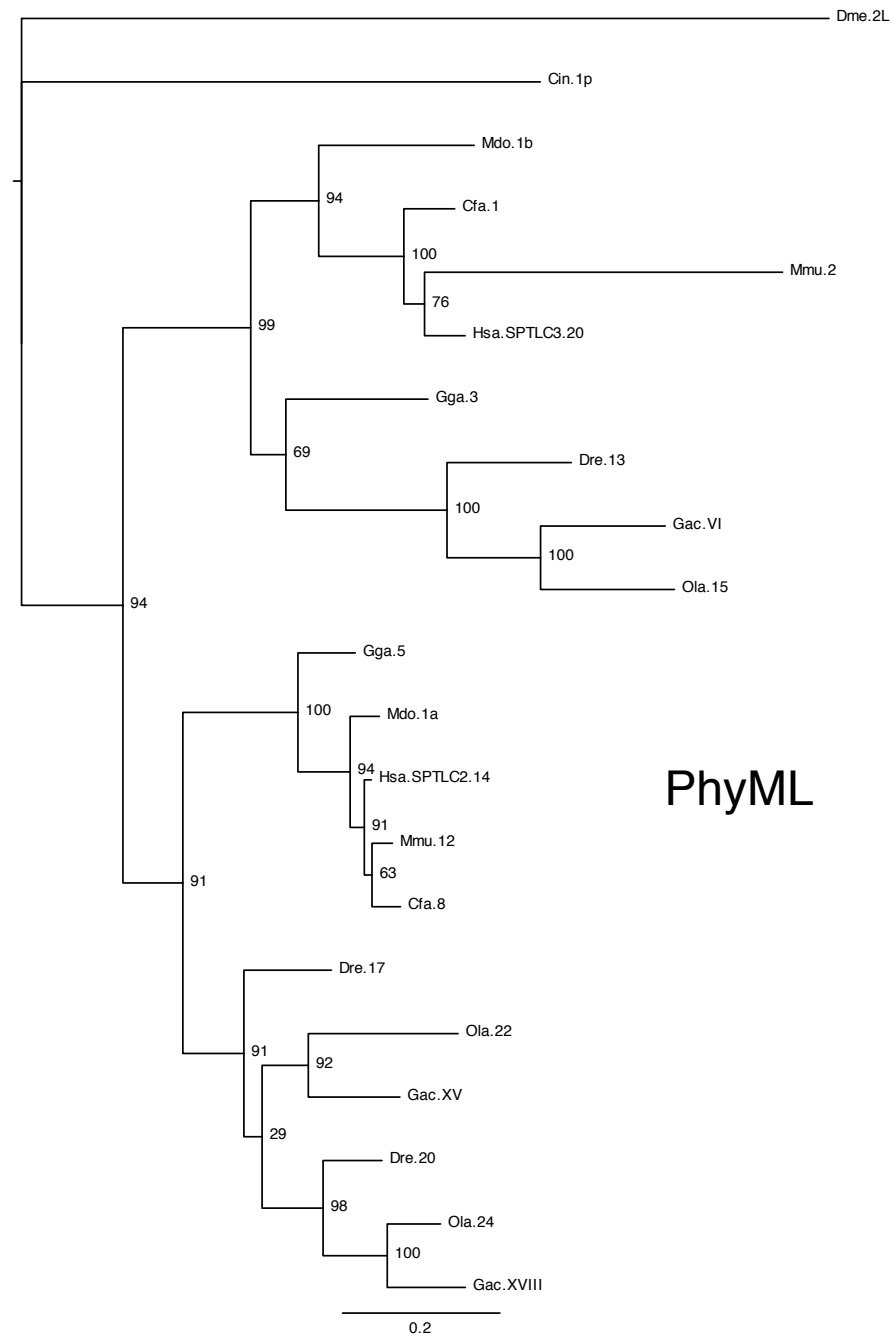
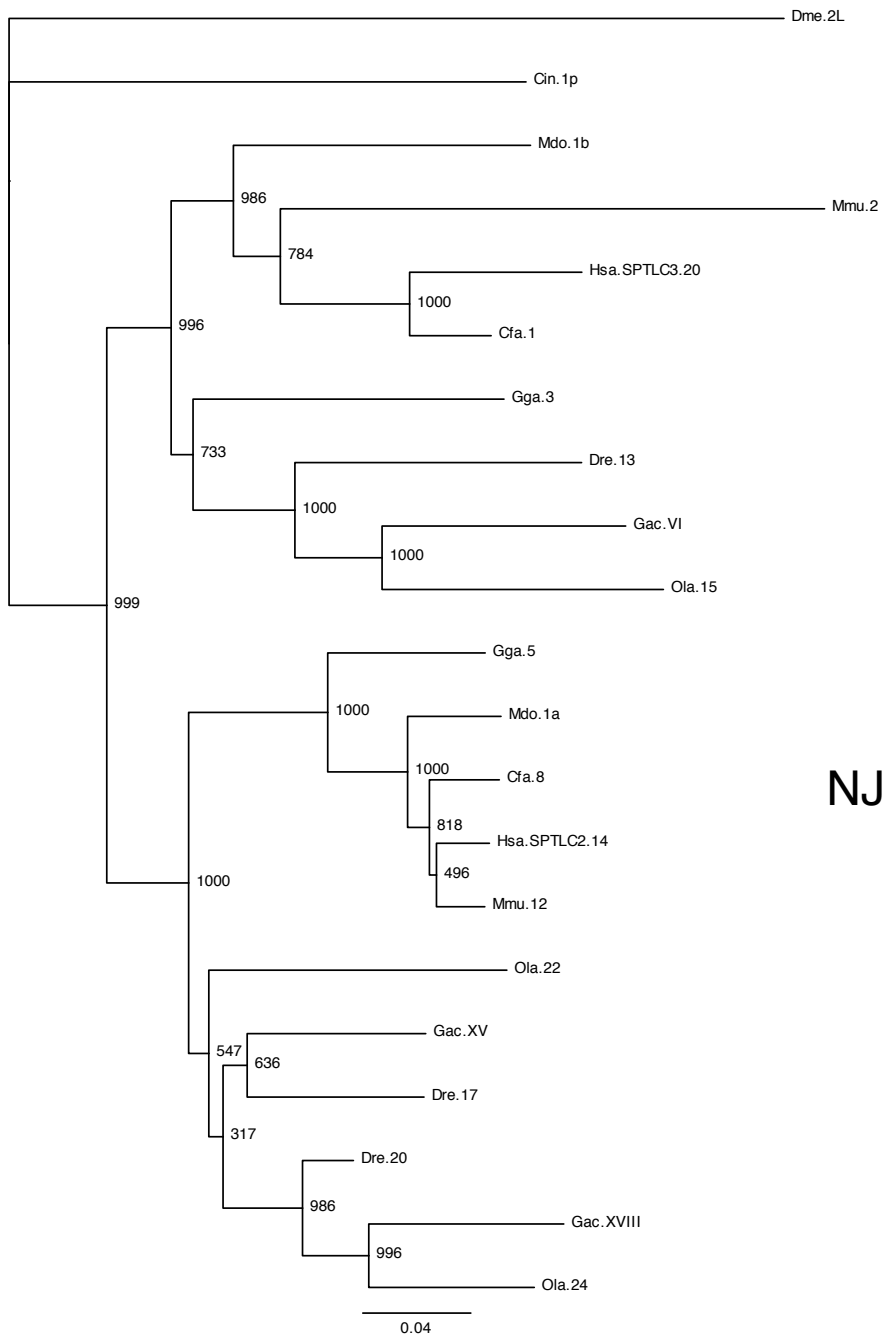


Figure S20. VSX