

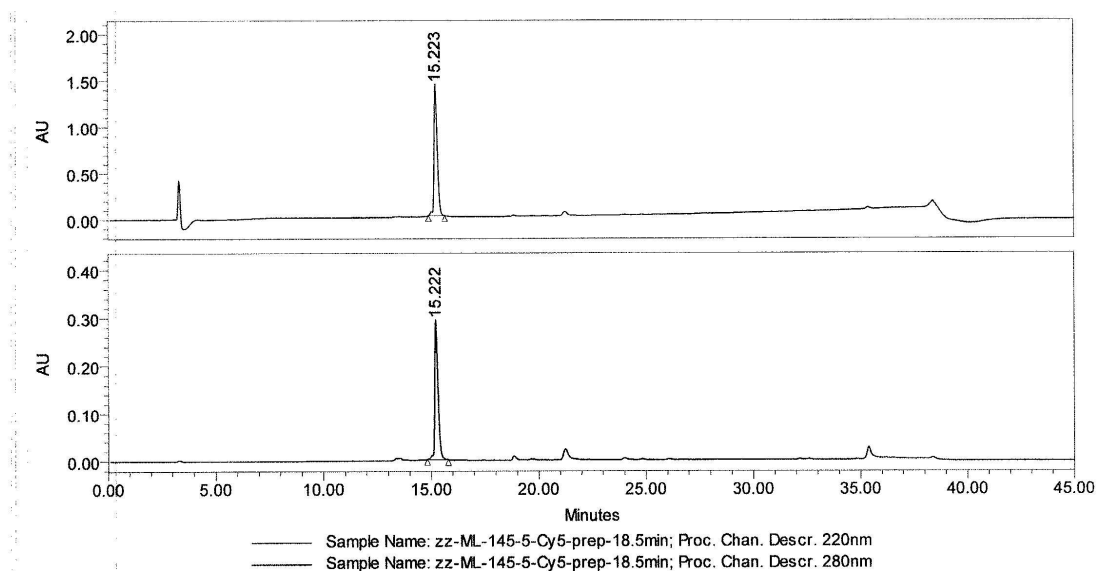
## Synthesis and Characterization of a Melanoma-Targeted Fluorescence Imaging Probe by Conjugation of a Melanocortin 1 Receptor (MC1R) Specific Ligand

Narges K Tafreshi<sup>†</sup>, Xuan Huang<sup>†</sup>, Valerie E Moberg<sup>†</sup>, Natalie M. Barkey<sup>†</sup>, Vernon K. Sondak<sup>‡</sup>, Haibin Tian<sup>†</sup>, David L Morse<sup>†\*</sup> and Josef Vagner<sup>§\*</sup>

**Authors' Affiliations:** <sup>†</sup>Dept. Cancer Imaging and Metabolism, <sup>‡</sup>Department of Cutaneous Oncology, H. Lee Moffitt Cancer Center & Research Institute, Tampa, FL; <sup>§</sup>BIO5 Institute, University of Arizona, Tucson, AZ

\*Corresponding Authors: J. V., The BIO5 Institute, University of Arizona, 1657 E Helen Street, Tucson, Arizona 85721, Phone 520-626-4179, fax 520-626-4824; e-mail [vagner@email.arizona.edu](mailto:vagner@email.arizona.edu); and D.L.M., H. Lee Moffitt Cancer Center and Research Institute, 12902 Magnolia Drive, Tampa, FL 33612; [David.Morse@moffitt.org](mailto:David.Morse@moffitt.org)

Supporting Information:



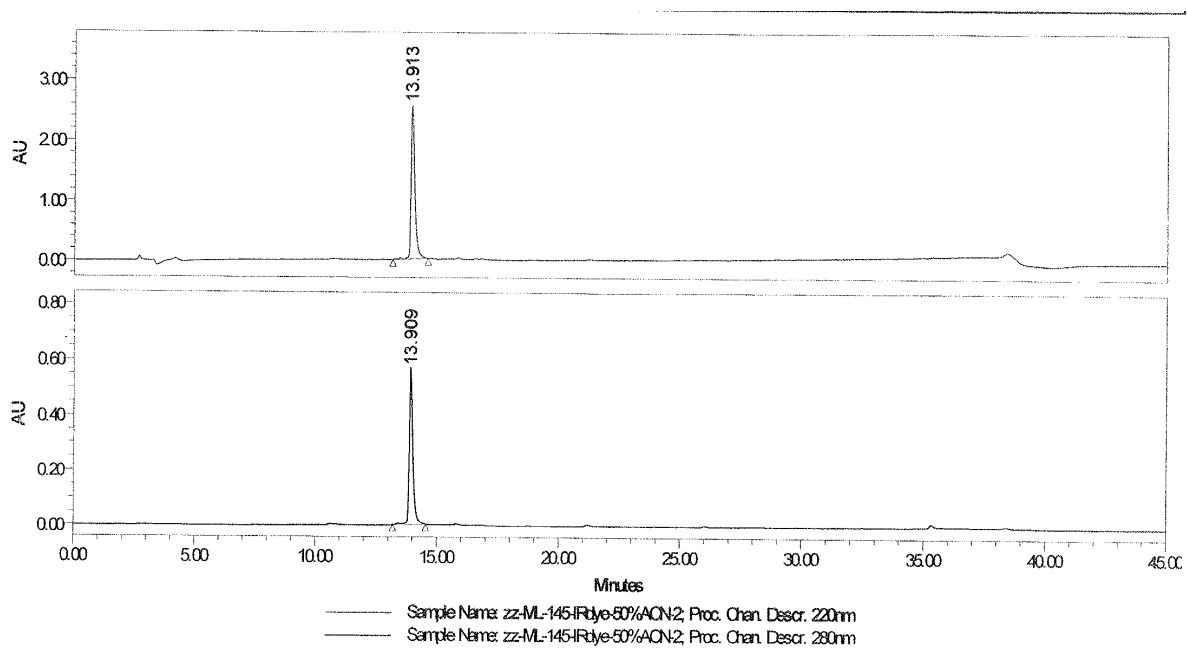
**Channel 220 nm**  
**Channel: 2487Channel 1**

	<b>RT</b>	<b>Area (<math>\mu\text{V}\cdot\text{sec}</math>)</b>	<b>% Area</b>	<b>Channel</b>
<b>1</b>	<b>15.223</b>	<b>1.50e+007</b>	<b>100.00</b>	<b>2487Channel 1</b>

**Channel 280 nm**  
**Channel: 2487Channel 2**

	<b>RT</b>	<b>Area (<math>\mu\text{V}\cdot\text{sec}</math>)</b>	<b>% Area</b>	<b>Channel</b>
<b>1</b>	<b>15.222</b>	<b>3.15e+006</b>	<b>100.00</b>	<b>2487Channel 2</b>

Figure S1. HPLC of the MC1RL-Cy5 compound.



**Channel 220 nm**  
**Channel: 2487Channel 1**

	RT	Area ( $\mu\text{V}^2\text{sec}$ )	%Area	Channel
1	13.913	2.90e+007	100.00	2487Channel 1

**Channel 280 nm**  
**Channel: 2487Channel 2**

	RT	Area ( $\mu\text{V}^2\text{sec}$ )	%Area	Channel
1	13.909	6.18e+006	100.00	2487Channel 2

Figure S2. HPLC of the MC1RL-800 compound.