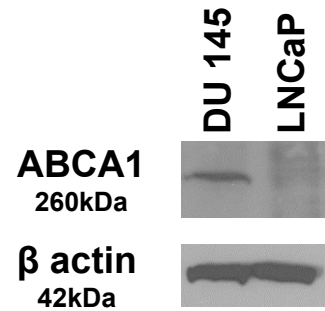
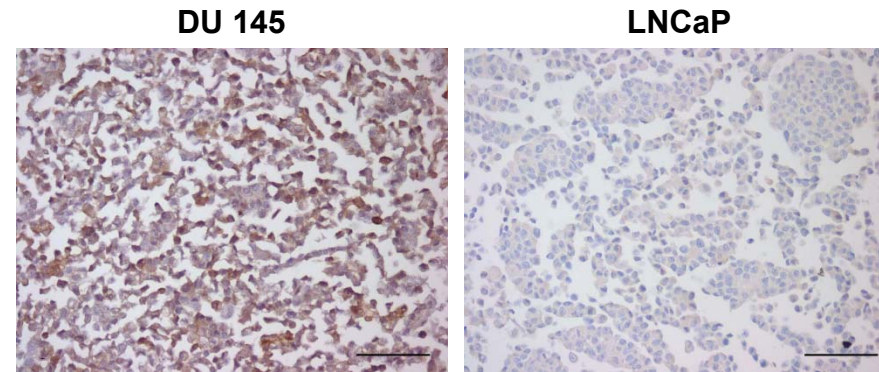


Supplementary Figure S1

A

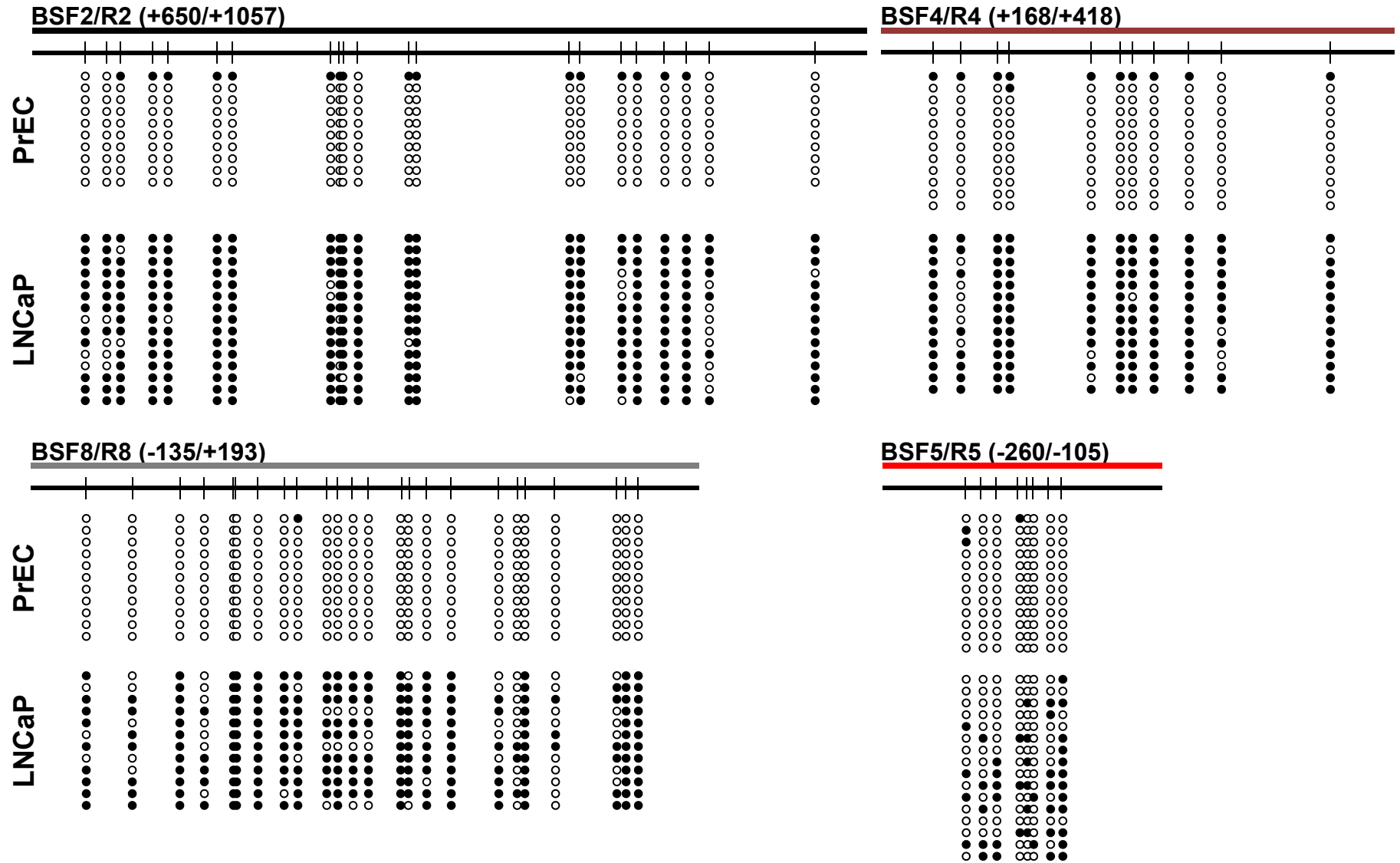


B



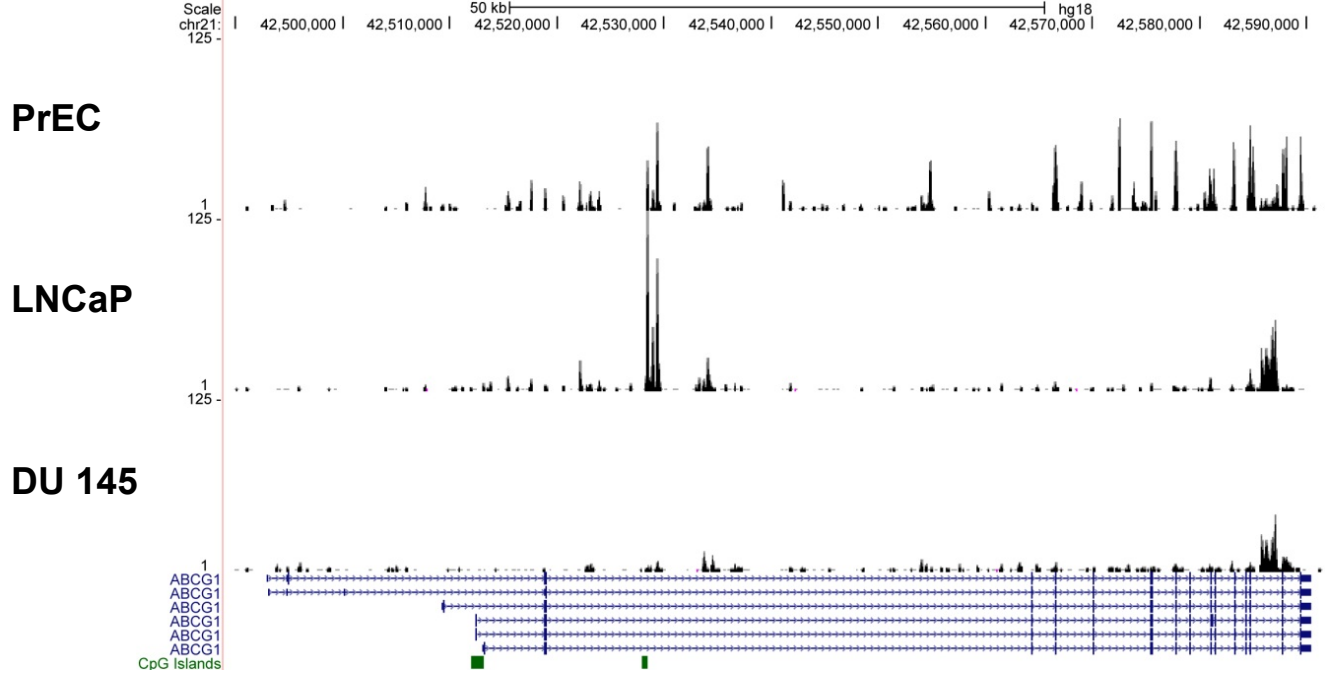
Supplementary Figure S1. Validation of custom rabbit anti-ABCA1 antibody. (A) Western blotting of DU 145 and LNCaP cells using the custom rabbit anti-ABCA1 antibody and commercial mouse anti-ACTB (β -actin) as loading control. (B) Immunohistochemistry of DU 145 and LNCaP cell blocks using the custom rabbit anti-ABCA1 antibody. Cells were formalin fixed and paraffin embedded for sectioning and staining. The scale bar represents 0.1 mm.

Supplementary Figure S2



Supplementary Figure S2. Additional *ABCA1* bisulfite sequencing validation in PrEC and LNCaP cells. Black circles represent methylated CpG sites, and white circles represent unmethylated CpG sites.

Supplementary Figure S3



Supplementary Figure S3. DNA methylation patterns at the *ABCG1* locus. UCSC genome browser snapshot displaying the DNA methylation sequencing signals in PrEC, LNCaP, and DU 145 cells at the *ABCG1* locus (UCSC Hg18, chr21:42,489,000-42,592,000).