

Figure S3. Young leaf- and mature leaf-preferred expression of AQP. Difference of expression level is indicated as Log₂ ratio of young relative to mature leaf samples. Differential AQP transcript accumulations between young and mature leaves were hierarchically clustered using Euclidean distance. Each row corresponds to an AQP gene. Color scale depicts Log₂ ratio value: Green represents young leaf-preferred expression and red represents mature leaf-preferred expression. Columns correspond to 10 comparisons from distinct experiments. Samples were collected from *Populus balsamifera* AP1006 trees grown on soil without water limitation (2: midday harvest) or from *P. fremontii* x *P. angustifolia* trees grown in hydroponics (genotype RM5 wounded (5), RM5 control (9), genotype 3200 grown with 0.125 mM nitrogen (8) or with 5 mM nitrogen (7), genotype 1979 grown with 0.125 mM nitrogen (4) or with 5 mM nitrogen (6)). During a time-course study carried on 30-year old *P. deltoides* tree, foliar tissues were collected in March, prior to the terminal bud opening, in April, May and June 2006. Impact of leaf maturity was assessed at three time points during leaf expansion, namely in March (10), May (3) and April (1) relatively to June (mature leaf). Microarray data were found under the series accession numbers: GSE13990 (2), GSE16786 (4 to 9) and GSE24349 (1, 3 and 10).

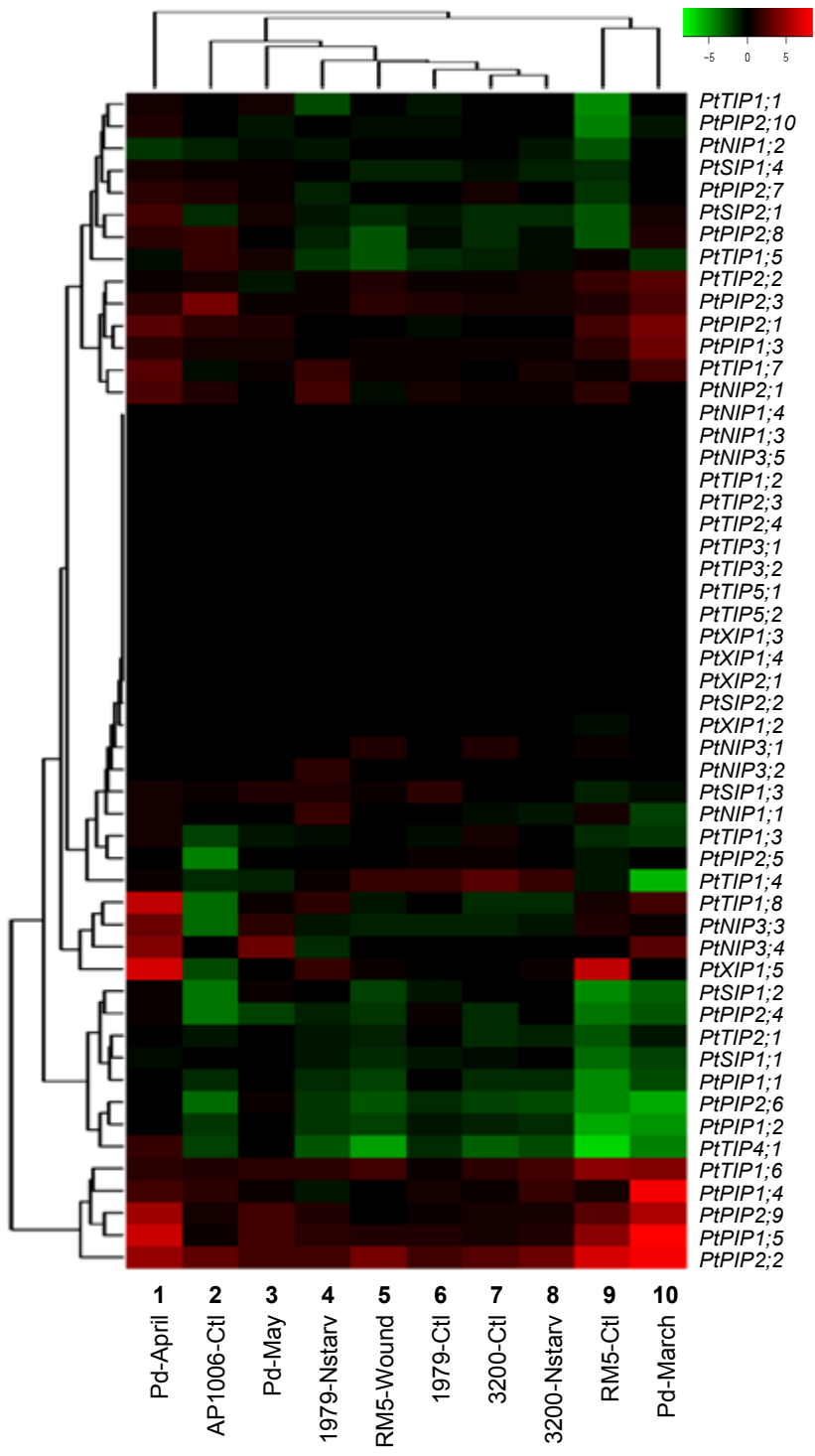


Figure S3