

Figure S1A

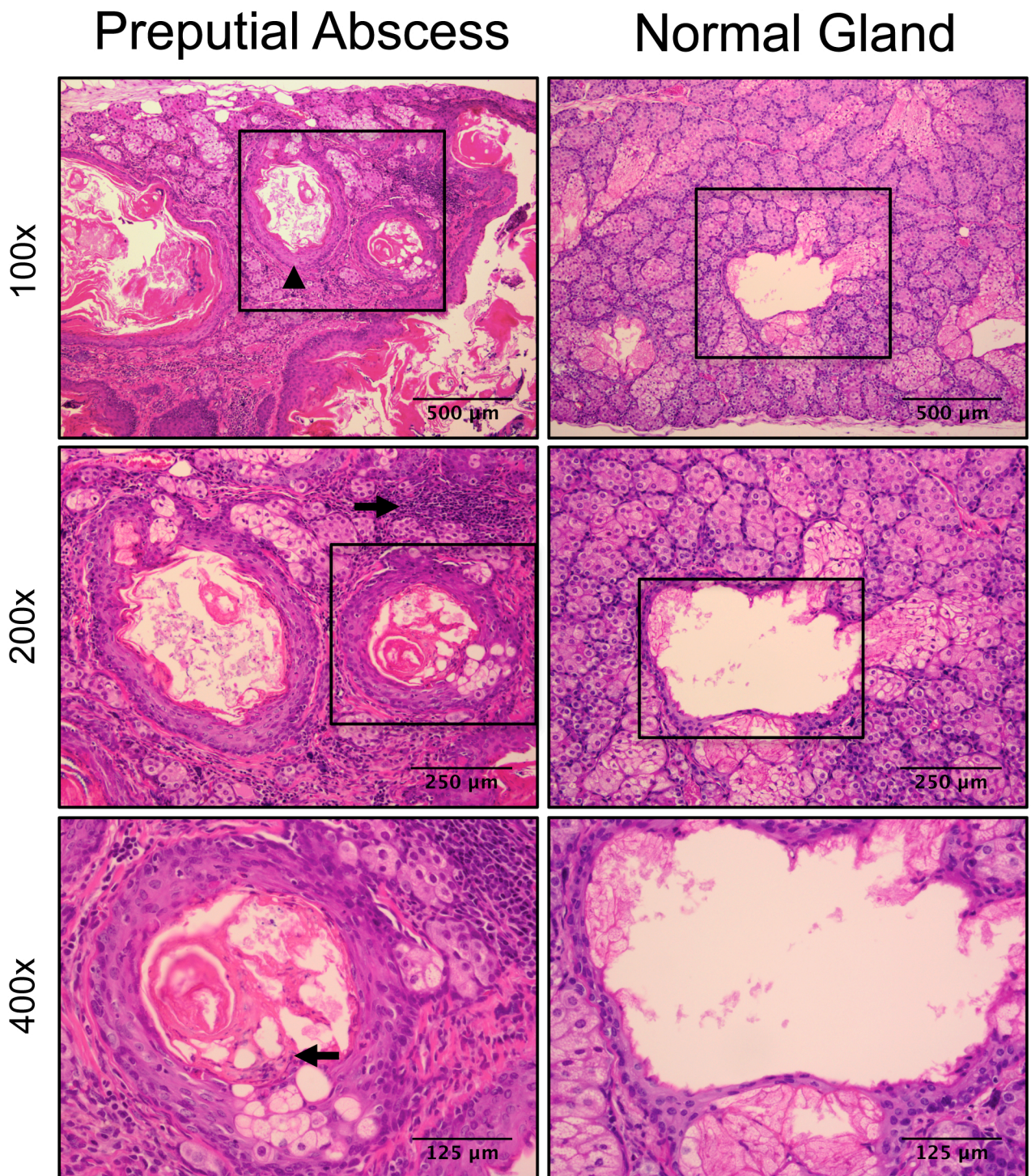


Figure S1B

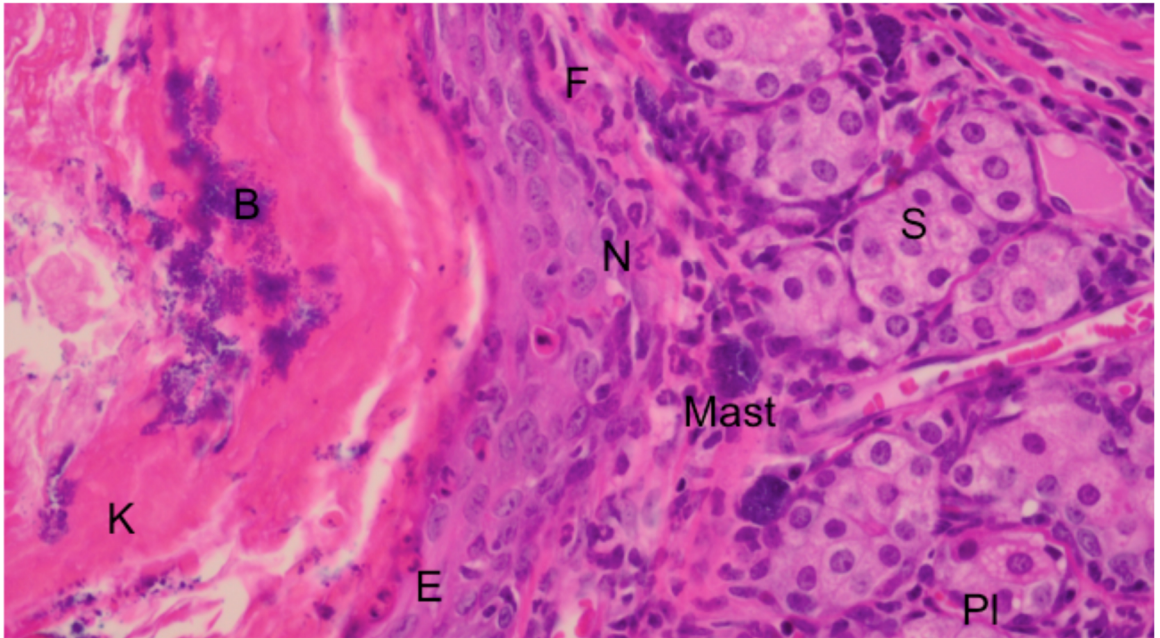


Figure Legend. Representative mouse with abscess of the preputial gland.

Preputial Abscess, 500X magnification. Key:

B=Bacteria

K=Keratin production inspissated within the ducts

E=Hyperplastic duct squamous epithelium

F=Fibrosis, concentric (chronic inflammatory changed)

N=Transmigrating and migrated neutrophils

S=Sebaceous glands

PI=Plasma cells