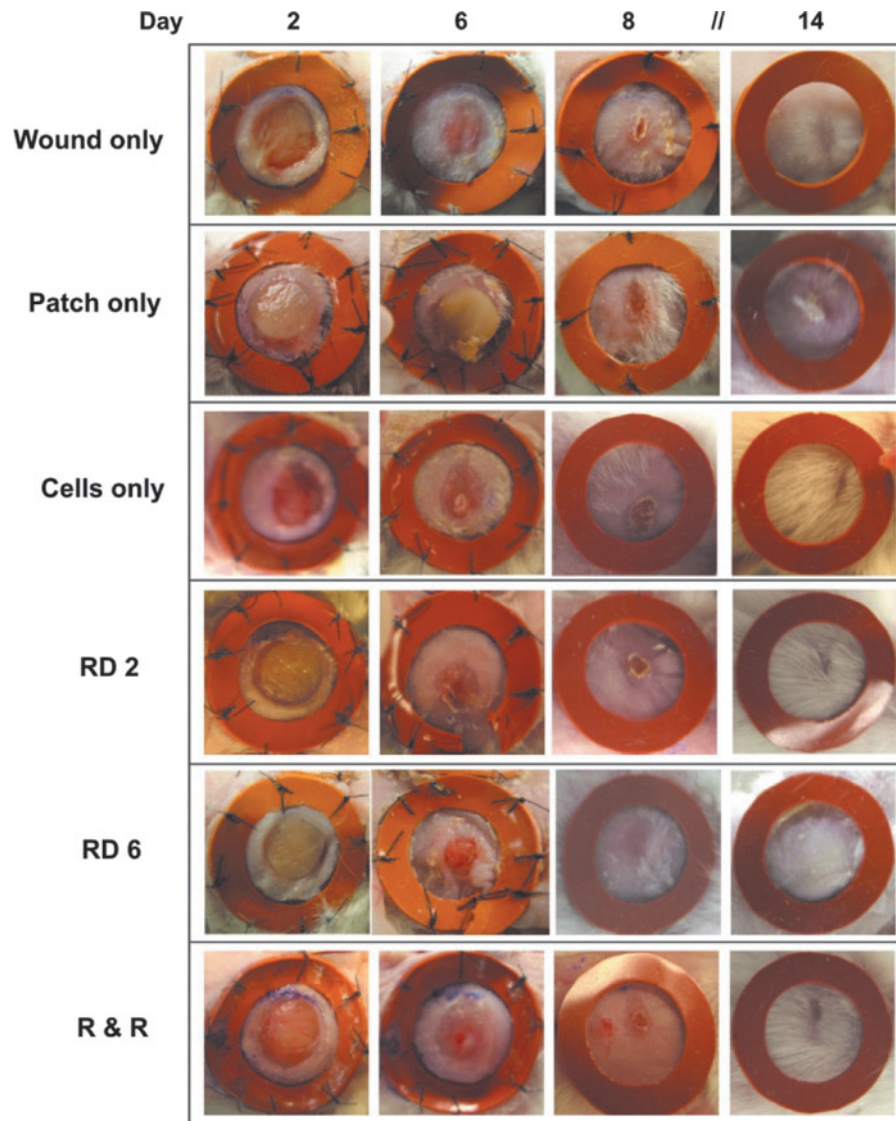


Supplementary Data



SUPPLEMENTARY FIG. S1. Gross images of the wounds at progressive time points through the healing process in the mice. Rubber rings sutured around the wound allowed for minimization of contracture, better mimicking human wound healing. As contracture minimized and the wounds began to close due to re-epithelialization, sutures were not needed, and rings were used primarily for reference measurement purposes. As the wounds healed, their diameter decreased gradually, with most groups showing full wound closure by day 14. RD 2, remove day 2; RD 6, remove day 6; R & R, remove and replace.