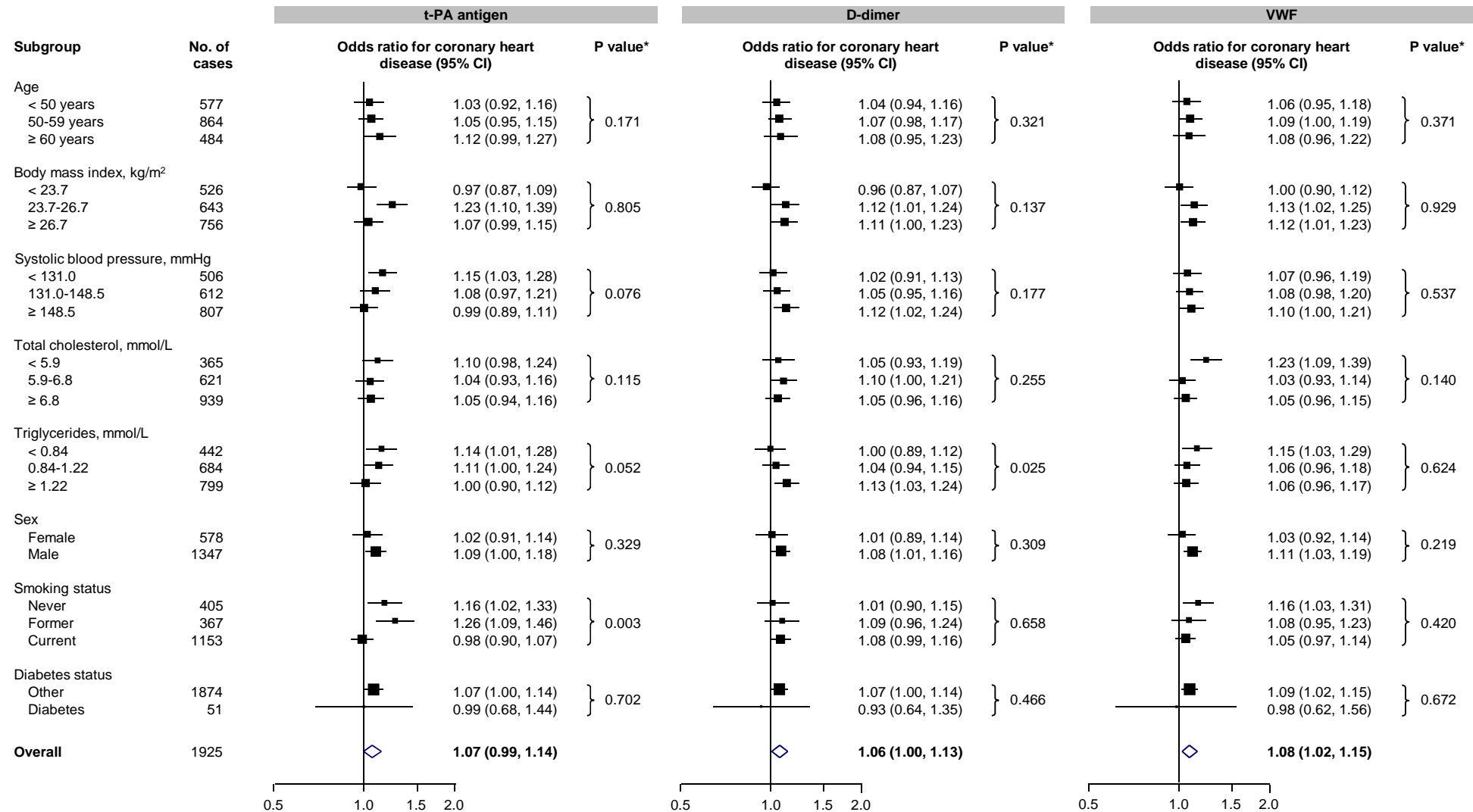


Figure S6. Explorative analysis of effect modification of the associations of baseline levels of t-PA antigen, D-dimer and VWF with coronary heart disease risk in the Reykjavik study.



Continuous variables were categorized based on tertile cut-offs in controls. All models are adjusted for age, sex, period of recruitment, smoking status, body mass index, systolic blood pressure, history of diabetes at baseline, total cholesterol, and log_e triglycerides. *P values were calculated using likelihood ratio tests comparing models with and without interaction terms.