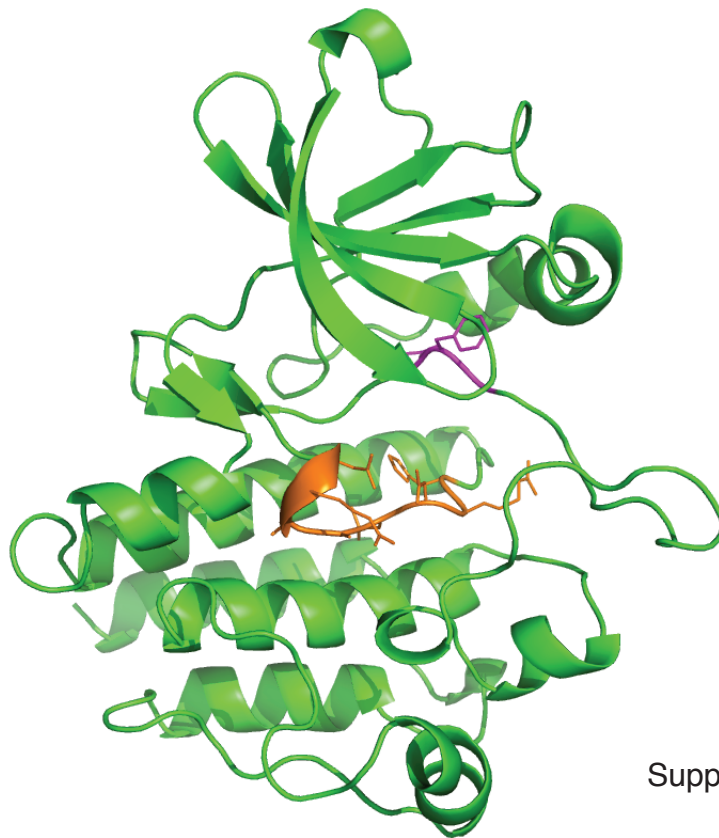


A

mCsk	188	WALNMKELKLLQTIQKGEFGDVMLGDYRGNKVAVKCIKN--DATAQAF LAEASVMTQLRH
MbCsk	187	HVIEPKDLIKGAKLGSQFGDVEEGTYCGQRVAIKTLKKNYEQSLRDEF LAEASVMTKLKH
CoCsk	241	WEIQRSEVILGNILGSGNFGEVYEATWRSQKVAVKTLKG--ENAMEDFLAEASVMTRLRH
mCsk	246	SNLVQLLGVIVEEKGGLYIVTEYMAKGSIVDYLRSRGRSVLGGDCLLKFSLDVCEAMEYLL
MbCsk	247	PNLVKLEGVVTEGKE-TMLVTEYMAKGNLLDFLRSRGRSVVKKDLLFKFTQDICEGMAFL
CoCsk	299	KNLVQLLGVCLDITP-IYIITEFMSKGSLODYLRSRGRREIPMATLFSFAQQVSSAMVYL
mCsk	306	EGNNFVHRDLAARNVLVSEDNVAKVSDFGLTKEAS-S-TQDTGKLPVKWTAPEALREKKF
MbCsk	306	EKQNVVHRDLAARNVLISEEDVAKVADFG LAKRSD-WGDIDSGKLPVKWTAPEVLKHKVS
CoCsk	358	ESRNFVHRDLAARNVLVGDNDTAKVADFG LAKNANEQDVVEGGKIPIKWTAPEALLNNTY
mCsk	364	STKSDVWSFGILLWEIYSFGRVPYPRIPKDVVPRVEKGYKMDAPDGCPPAVY-EVMKNC
MbCsk	365	TSKSDVWSFGITMWEIYSYGRSPYPRMSQKDVVDALPKGYRMERPDDCPETLYTAVMRAC
CoCsk	418	TNKSDVWSFGVVLWEVYSFGRIPYPRMSHTEVVQEIKRGYRMESPEGCPTAIY-NIMLAC
mCsk	423	WHLDAAMRPSFLQLREQLEHIKTHELHL
MbCsk	425	WEMDPLSRPTFNRLKRTLAKFKGS----
CoCsk	477	WQIEVDRRPSFREIETOLEKAAGTAM--

B



Supplemental Figure 3