

Supplementary information, Figure S7

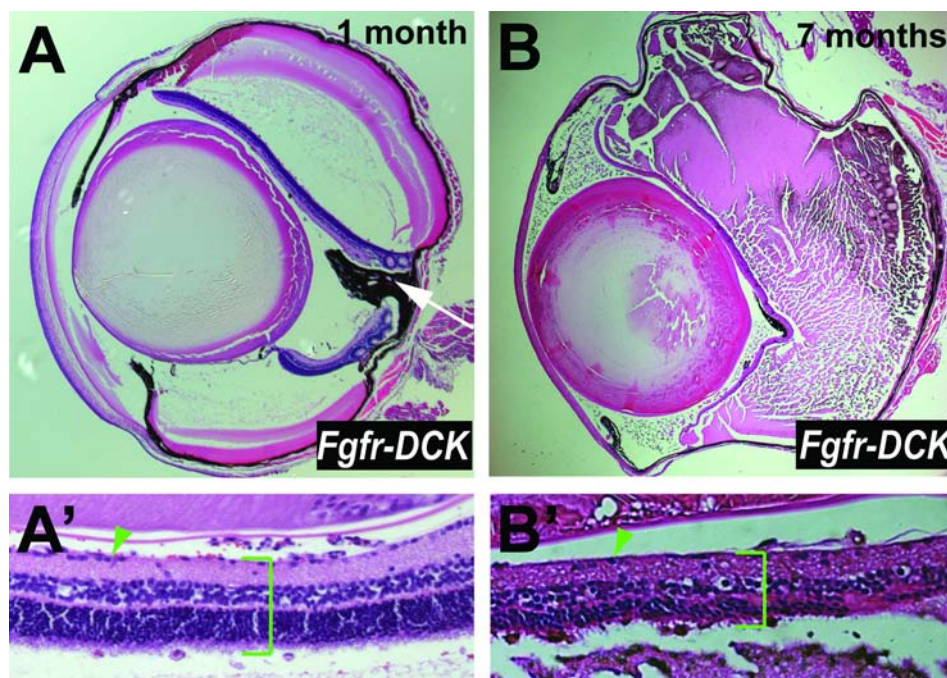


Figure S7 Retinal cells gradually degenerate in *Fgfr-DCK* eyes. (A, B) HE stained sections of 1-month (A) and 7-month (B) old *Fgfr-DCK* mutant eyes. In the adult *Fgfr-DCK* eyes, excessive extracellular matrix proteins (pink) accumulate between the neural retina and the RPE. By comparing 1-month (A') and 7-month (B') ages, the retinal thickness (green brackets) and RGCs (green arrowheads) decrease dramatically with age. Note that the unclosed fissure (arrow) remains in the one-month old mutant eye (A).