

Supporting information

Heffer et al. 10.1073/pnas.1210847110

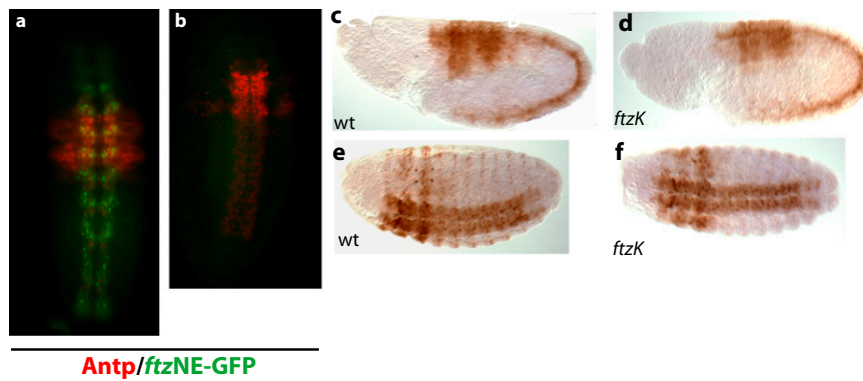


Fig. S1. Fushi tarazu (Ftz) CNS expression does not overlap with Antennapedia (Antp) or activate Antp expression in the CNS. (A) While Ftz CNS expression appears earlier in development, once Antp CNS expression was detectable, Ftz expression (green) was in a different subset of neurons than Antp (red), and Antp expression persists later into development (B). (C–F) Antp expression is indistinguishable in WT and *ftzK* mutants at early (C and D) and later (E and F) stages of CNS development, suggesting loss of *ftz* CNS expression does not affect Antp expression.