

Supporting Information for:

Synthesis of Cyclopentanyl Carbocyclic 5-Fluorocytosine ((-)-5-Fluoro-Carbodine) Using a Facially Selective Hydrogenation Approach

Jong Hyun Cho,[†] Franck Amblard,[†] Steven J. Coats,[‡] Raymond F. Schinazi,^{†}*

Center for AIDS Research, Laboratory of Biochemical Pharmacology, Department of Pediatrics, Emory University School of Medicine, and Veterans Affairs Medical Center, Decatur, GA 30033, USA, and RFS Pharma, LLC, 1860 Montreal Road, Tucker, GA 30084, USA
rschina@emory.edu

Contents

Table 1. Condition Optimization for the Formation of 18	S2
Table 2. Condition Optimization for the Formation of Compound 19 from 18 using 2 nd Generation Grubbs' Catalyst D	S2
¹ H, ¹³ C and ¹⁹ F NMR Spectra for compounds 12 , 13 , 15-23 and 6	S3-S24

Table 1. Condition Optimization for the Formation of **18**

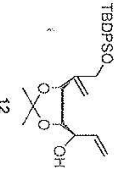
Entry	Reaction conditions	4-pentenoyl chloride	Yield (%)
1	Pyridine, rt, 24 h	4.0 equiv	15
2	DMAP, Pyridine, rt, 12 h	3.0 equiv	24
3	Et ₃ N, Pyridine, rt, 12 h	3.0 equiv	28
4	Et ₃ N, DMAP, CH ₂ Cl ₂ , rt, 12 h	4.0 equiv	56
5	Et ₃ N, CH ₂ Cl ₂ , 0 °C, 3 h	4.0 equiv	97
6	Et ₃ N, CH ₂ Cl ₂ , 0 °C, 4 h	3.0 equiv	97

Table 2. Condition Optimization for the Formation of Compound **19** from **18** using 2nd Generation Grubbs' Catalyst **D**

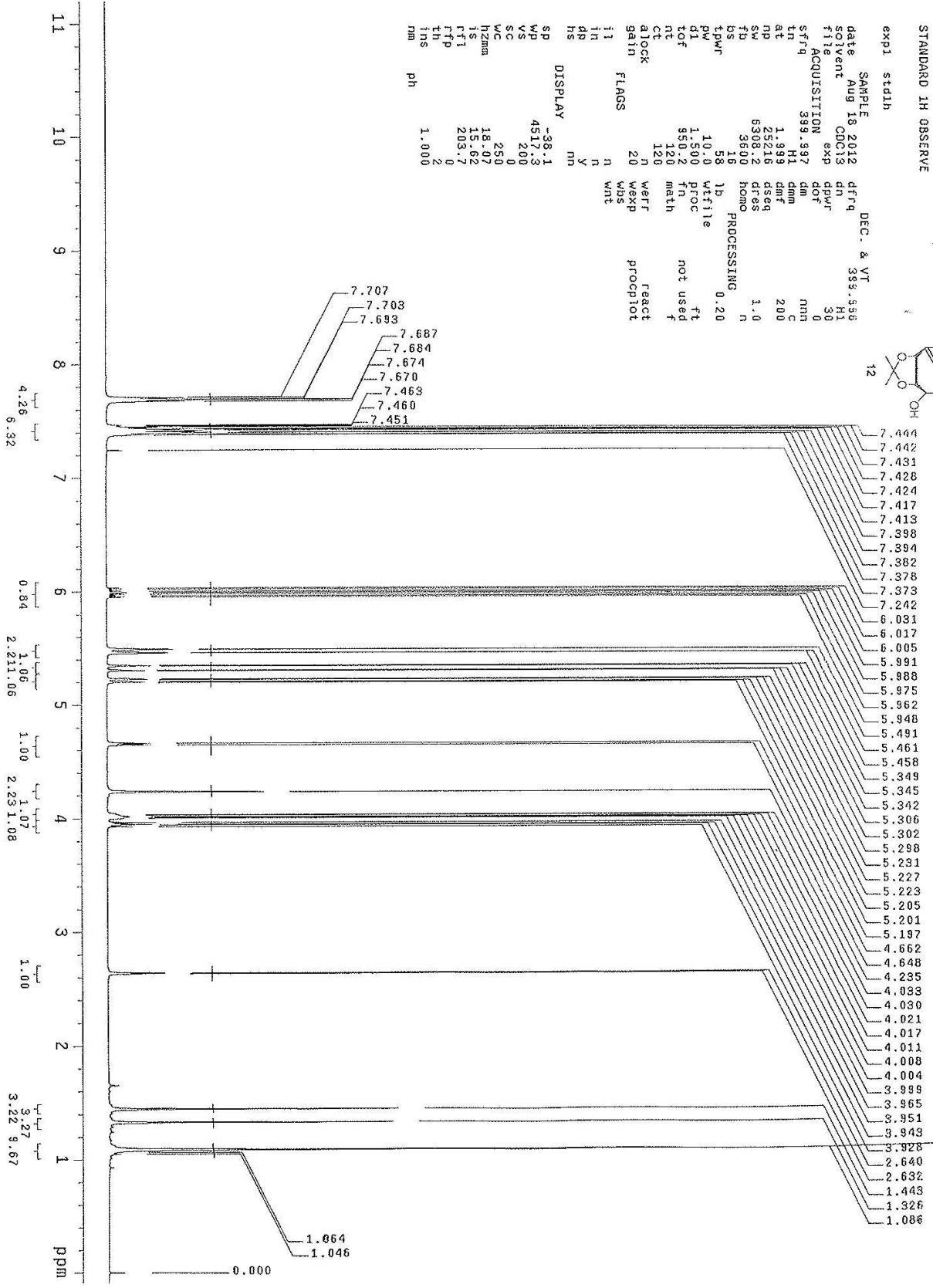
Entry	Solvent ^a	Reaction conditions	RCM % yield (recovered SM %) ^b
1	CH ₂ Cl ₂	5.0 mol% D , rt, 48 h	25 (45)
2	CH ₂ Cl ₂	1.0 mol% D , rt, 72 h	30 (40)
3	CH ₂ Cl ₂	2.5 mol% D , 40 °C, 12 h	43 (32)
4	Cl(CH ₂) ₂ Cl	2.5 mol% D , 40 °C, 24 h	35 (30)
4	Toluene	5.0 mol% D , rt, 24 h	32 (40)
5	Toluene	5.0 mol% D , 40 °C, 6 h	70 (15)
6	Toluene	5.0 mol% D , 80 °C, 0.5 h	87
7	Toluene	2.0 mol% D , 80 °C, 1 h	90
8	Toluene	2.0 mol% D , 80 °C, 6 h	78 (5)

^a1mM concentration. ^bYields of isolated compounds **18** and **19** after column chromatography.

STANDARD 1H OBSERVE



exp1 stidh
 SAMPLE date Aug 18 2012 DEC. & VT 353.536
 solvent CDC13 dn HI
 title exp qpwr 30
 ACQUISITION dot 0
 sfrq 399.997 dm nmh
 tn HI dmh 200
 at 1.999 dmf C
 mp 232.16 dseq 1.0
 SW 6309.2 dres home n
 TD 3900
 DS 56
 TPR 1b
 PW 10.0 utfile 0.20
 DI 5.00 Proc ft
 TOR 15.00 not used f
 nt 539.2 math f
 ct 120
 aLock n
 gain 20 welf
 wexp WMS
 wht
 i1 n
 in n
 dn y
 hs nm
 DISPLAY -38.1
 SP 4517.3
 WD 2.00
 SC 250
 h2mm 18.07
 j2mm 15.62
 rF1 203.7
 rF2 0
 tH 2
 ins 1.000
 nm



STANDARD 1H OBSERVE

expl stath

SAMPLE DEC. & VI 359.996

date Aug 18 2012

solvent CDCl3

file exp

ACQUISITION

sfreq 399.997

in HI

at 1.999

np 25216

sw 6308.2

fb 3690

bs 16

tpwr 58

pw 10.0

dl 1.500

tof 350.2

nt 120

cl 120

alock 20

gain

fl

in

dp

hs

DISPLAY

sp -63.1

wp 893.2

vs 300

sc 0

wc 250

hzmm 3.28

ls 15.82

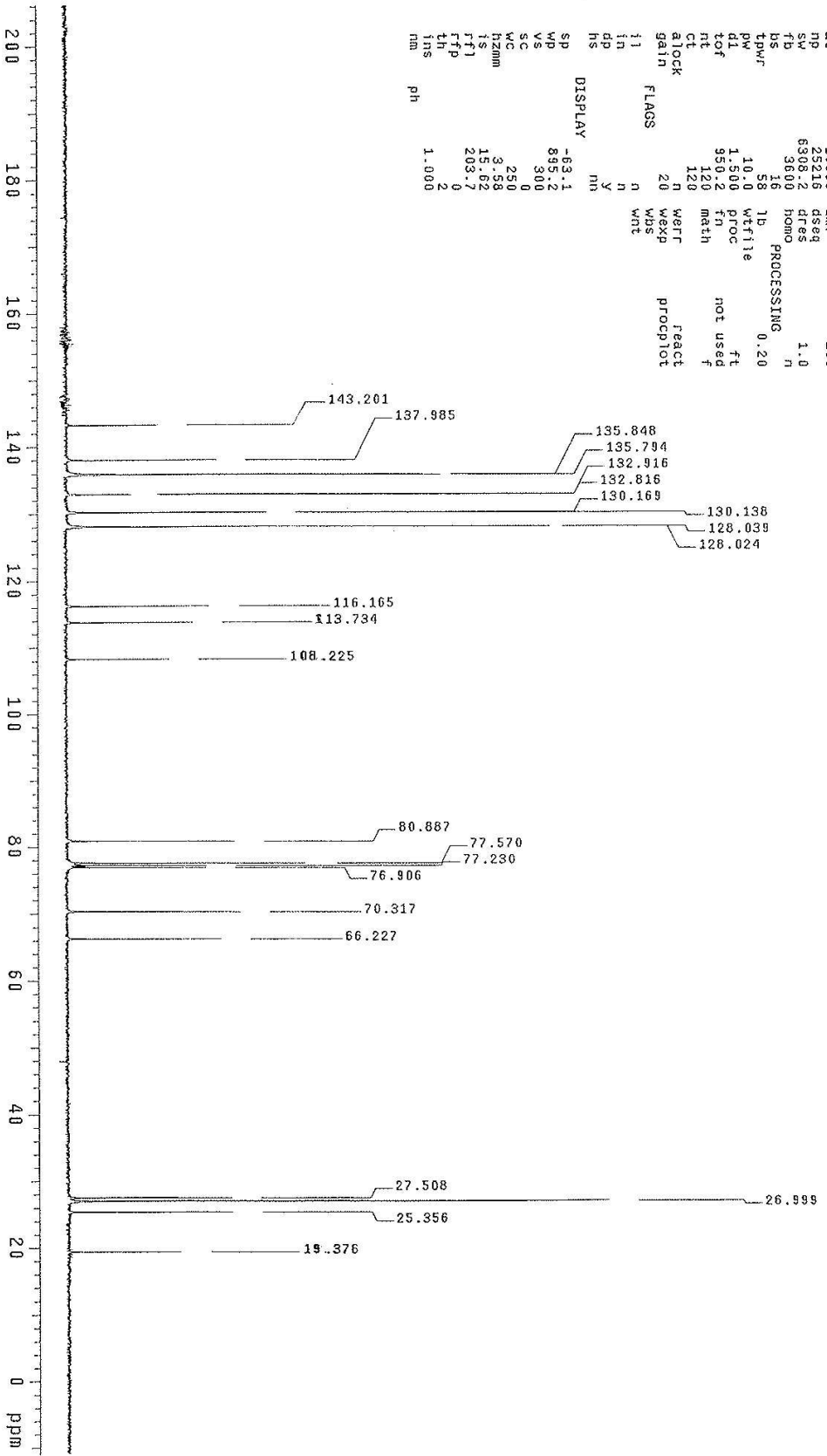
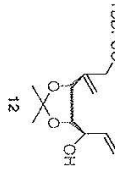
lsl 203.7

rlp 2

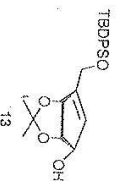
rh 1.900

rms

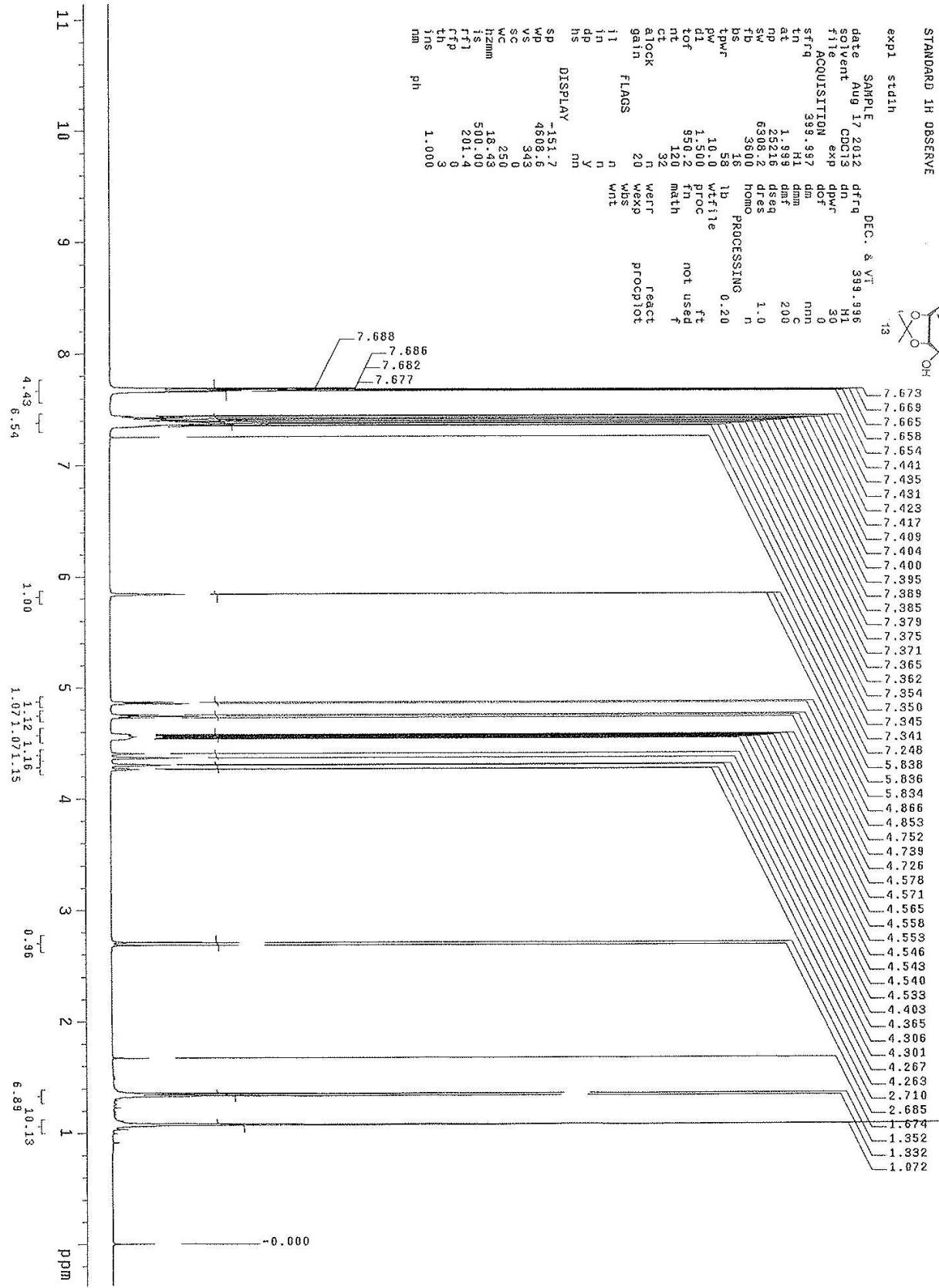
TBDPSO



STANDARD 1H OBSERVE



exp1 stidh
 SAMPLE date Aug 17 2012 DEC. & VT 399.996
 solvent CDCl3 H1 30
 file exp 0
 ACQUISITION 399.997 dm nmh
 stfrq H1 dm C
 tn at 1.999 dnt 200
 np 23246 dseq 1.0
 sw 630872 dres homo n
 fd 3690
 ds 16 PROCESSING 0.20
 tpwr 58 lb
 pw 10.0 wffile
 di 1.500 proc ft
 tot 53072 tn not used
 nt 120 math f
 ct 32
 atock n react
 gain 20 wexp procpilot
 i1 n
 in n
 dp y
 hs nm
 DISPLAY
 sp -151.7
 wp 4609.16
 vs 343
 sc 250
 wc 18.95
 hzmm 500.90
 ls 201.9
 f11 9
 f1p 2
 tns 1.000
 nm ph



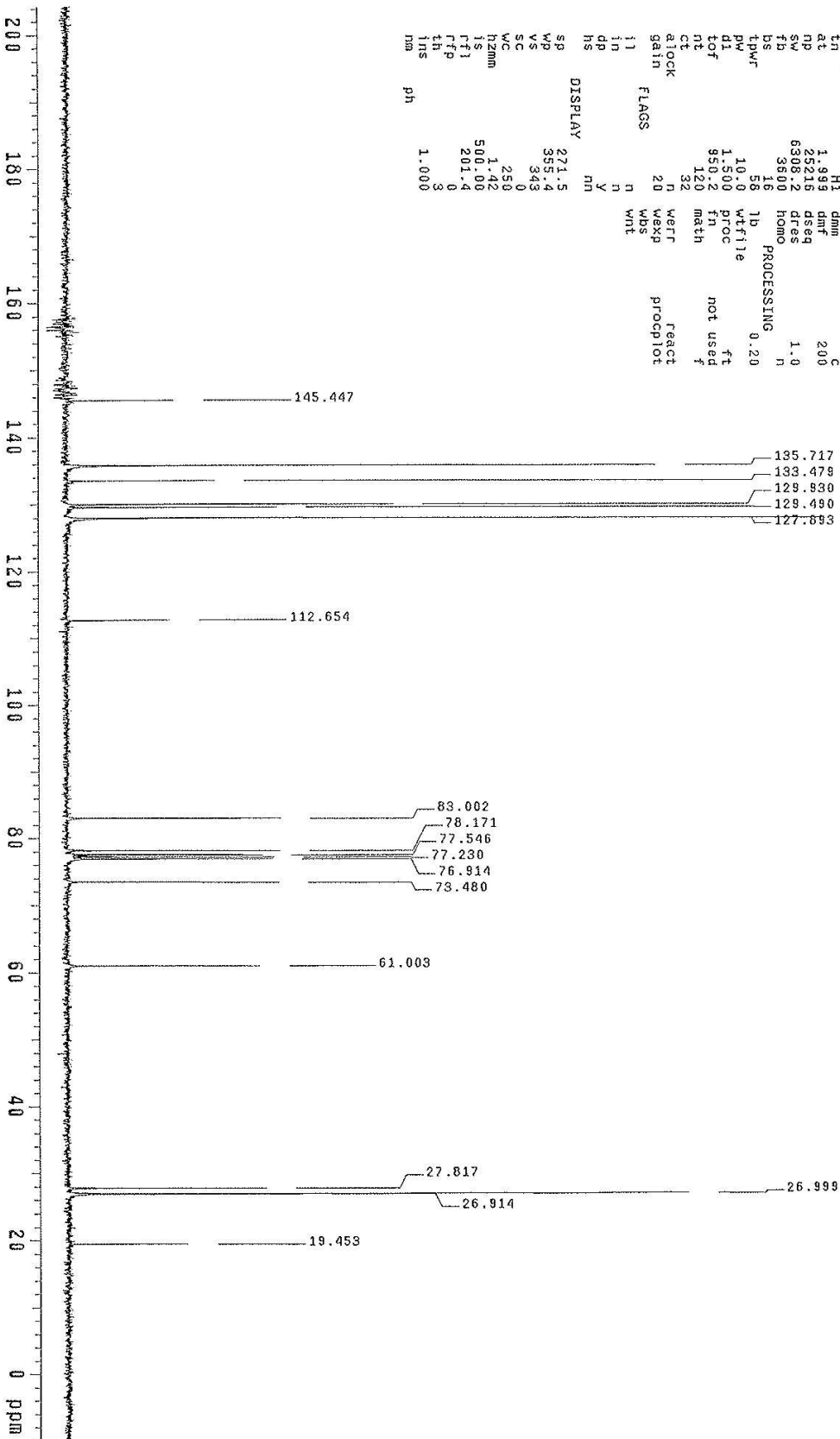
STANDARD 1H OBSERVE

TEBPSO



```

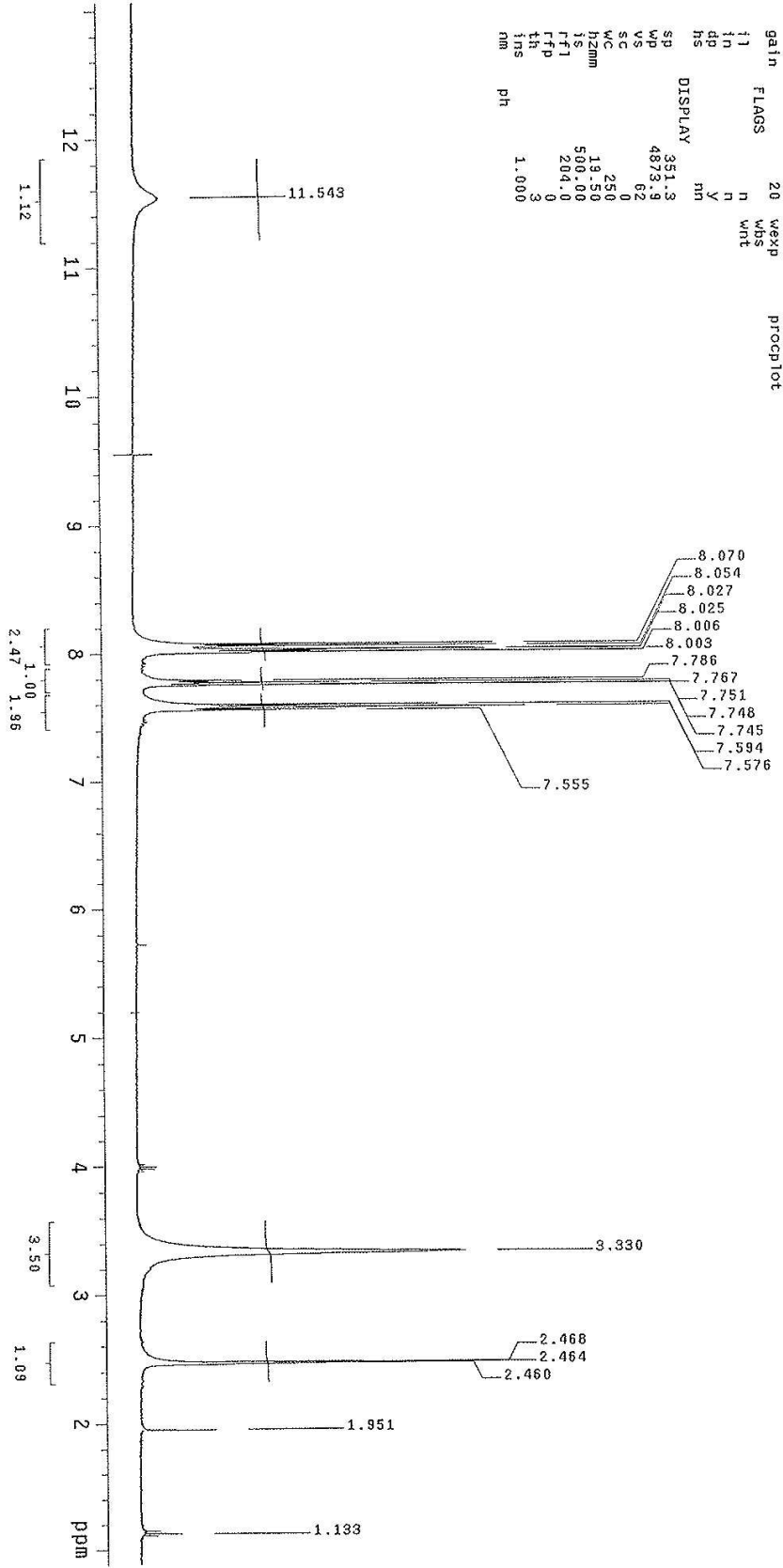
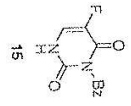
exp1 sid1h
SAMPLE
date Aug 17 2012 DEC. & VI 399.996
solvent CDCl3 dn H1
file exp dpr 30
ACQUISITION dof 0
sfreq 399.997 dm nmh
tn H1 dhm C
at 1.999 dmf 200
np 25216 dseq
sw 6308.2 dres 1.0
fb 3600 Homo n
bs 16 PROCESSING 0.20
tpwr 58 1d
pw 10.0 wf11e
di 1.500 proc ft
tof 959.2 fn not used
nt 120 math f
ct 32 react
atlock n werr procplot
gain 20 wexp
i1 n wbs
in n wht
dp n
hs Y
DISPLAY
sp 271.5
wp 335.4
vs 343
sc 0
wc 259
h2mm 1.42
ls 500.00
rf1 201.4
rfp 0
th 3
ins 1.000
dia ph
  
```



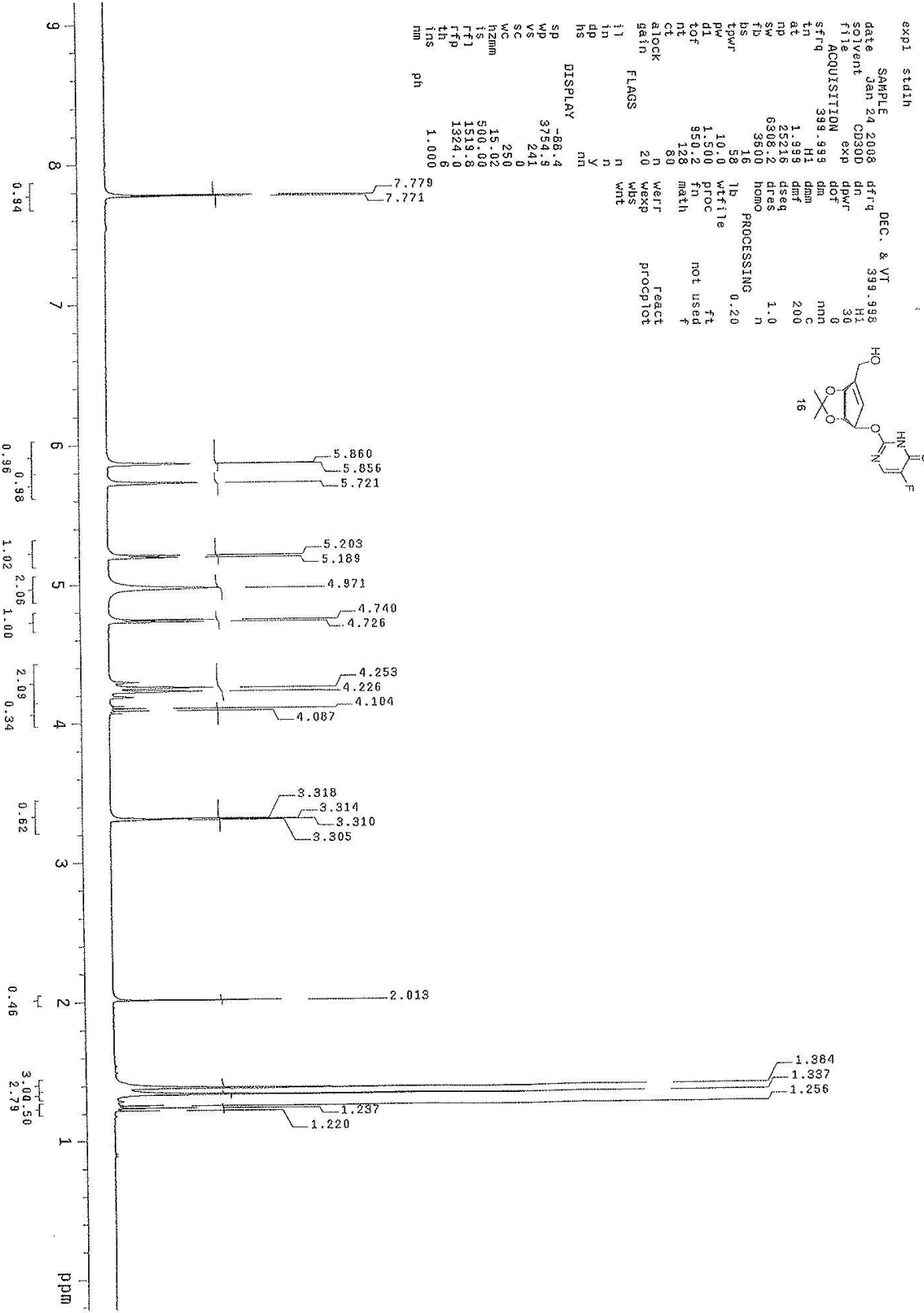
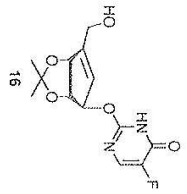
STANDARD 1H OBSERVE

```

expt sidln
SAMPLE 2 2007 DEC. 2 VT
date NOV 2007 dtrq 399.999
solvent DMSO dn H1
file exp 30
ACQUISITION 399.999 dm nmh
sfrq H1 dnm
in 1.999 dnt C
at 25216 dseg 200
np 6308.2 dres 1.0
sw 3600 homo n
bs 16 PROCESSING 0.20
tpwr 58 lb
pw 10.0 wflie
di 1.500 proc ft
tof 950.2 fr not used
nt 64 math f
ct gain 64
alock gain 20 n
flags n wexp proact
gain n wexp procpio
in n n
dp y n
hs nm
DISPLAY 351.3
sp 4873.9
wp 62
vs 0
wc 250
sc 0
h2mm 19.50
ts 500.00
fft 204.0
fth 0
fms 3
nm 1.000
ph
  
```



STANDARD 1H OBSERVE



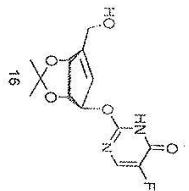
```

expt  stdIn
SAMPLE  Jan 24 2008  DEC. & VI  399.998
solvent  CD300  dn  H1
file  exp  dpwr  30
ACQUISITION  8  dof  30
sfreq  399.999  tn  dm  mn  C
at  1.999  dmf  200
np  25216  dseg
sw  6308.2  dres  1.0
fb  3500  homo
bs  16  PROCESSING  0.20
tpwr  58  lb  wfile
pw  10.0  proc  ft
dl  1.500  fn  not used
tof  950.2  math  f
nt  128
ct  80
alock  n  weff  React
gain  20  wexp  procpilot
il  n  wbs
in  n  wnt
dp  Y
hs  m

DISPLAY  -68.4  sp
          3754.9  wp
          241  vs
          0  sc
          250  wc
          15.02  hzmm
          500.00  is
          1519.8  rfl
          1324.0  rfp
          6  lh
          1.000  ins
          nm
          ph
  
```

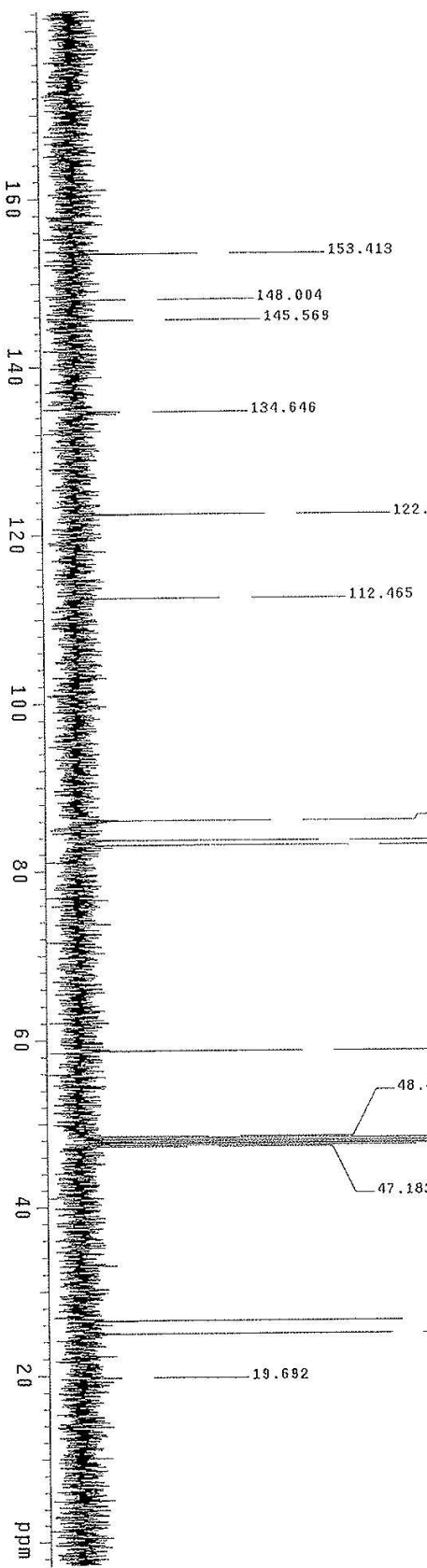

13C OBSERVE

EXPI std13c



SAMPLE 7 2008 DEC. 8 VT
 date Apr 7 2008 399.998
 solvent CD3OD dn
 file C050D exp 38
 ACQUISITION exp 38
 stfrq 100.589 dm -200.0
 tn C13 dm
 at 1.439 dm 9000
 np 5998 dseg
 sw 25907.0 dres
 fb 13690 homo 1.0
 bs 16 PROCESSING 1.00
 tpwr 7.0 lb
 pw 7.0 wlfite
 dl 3.000 proc ft
 tof 0 tn not used
 nt 400 meth f
 ct 144
 gain 50
 flags n werr react
 in n n wexp procpilot
 tn n n wbs testun
 dp y
 hs nn

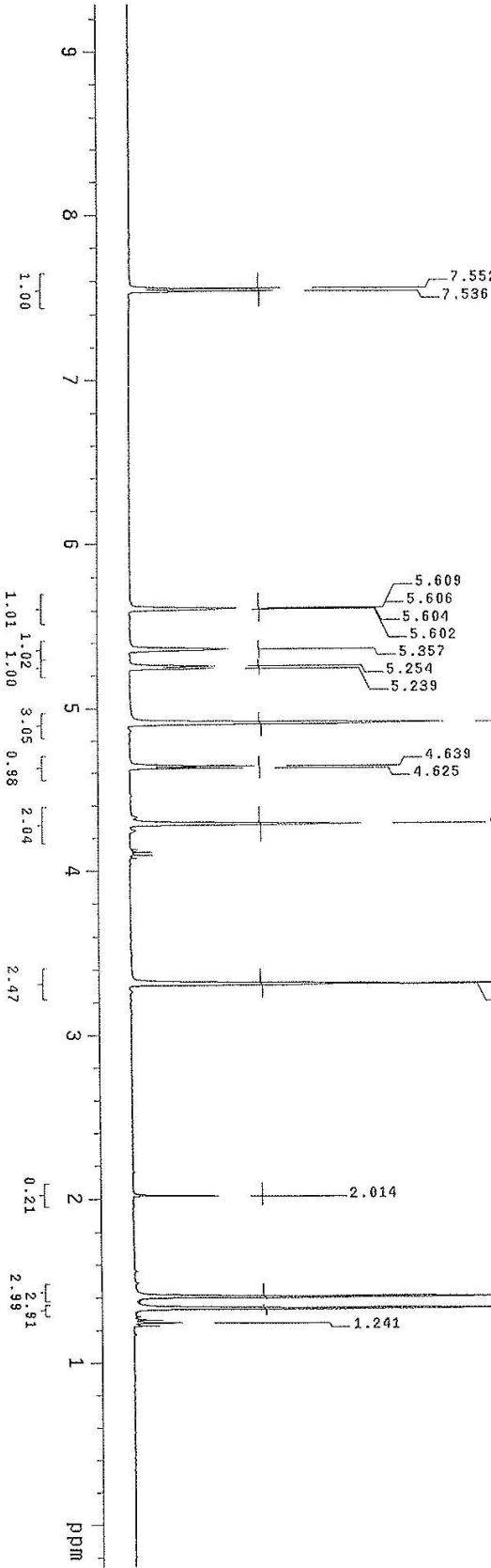
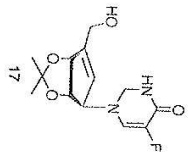
DISPLAY
 sp -518.8
 wp 17019.4
 vs 141
 sc 250
 wc 68.97
 hzmm 500.00
 ls 2982.5
 ffl 8
 ftd 8
 fns 100.000
 ph



STANDARD 1H OBSERVE

expt std1h

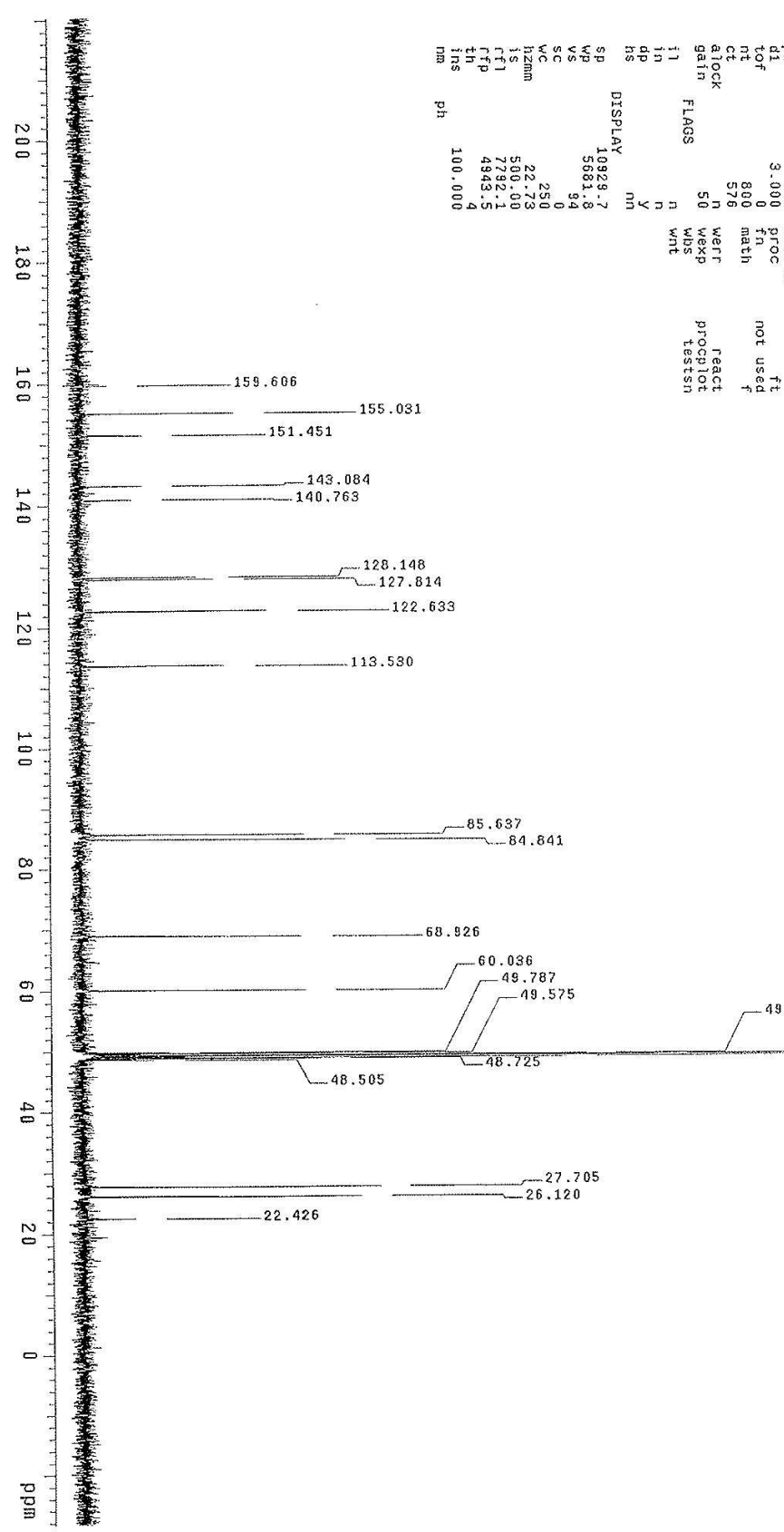
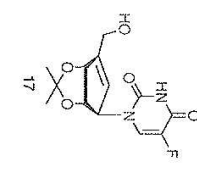
date	Jan 24 2008	DEC. & VT	399.998
solvent	CD3OD	dn	H1
file	exp	dpwr	30
ACQUISITION	exp	dof	0
strq	399.999	dm	nmn
tn	H1	dmm	C
at	1.993	dmt	200
np	25215	dset	1.0
sw	6308.2	dres	n
fb	3600	homo	
bs	16	PROCESSING	0.20
tpwr	58	td	wtfile
pv	10.0	proc	ft
di	1.500	fn	not used
tof	550.2	math	f
nt	128	react	
ct	128	werr	procp1ot
alock	n	wexp	
gain	20	wds	
ll	n	wt	
in	y		
dp	n		
hs	nm		



13C OBSERVE

exp1 sta13c

SAMPLE 7 2008 DEC. & VT
date Apr 7 2008 dfrq 399.998
solvent CD3OD dn H1
file exp CD3OD -200.0
ACQUISITION dof 38
sfreq 100.589 dm W
tn C13 dnm W
at 1.199 dnt 9000
np 59988 dseq
sw 25000.0 dres 1.0
fb 13890 homo n
bs 16 PROCESSING 1.00
tpwr 58 id wtfile
pw 7.0 proc ft
d1 3.000 fn not used
tof 0 math f
nt 890 math
ct 576
clock n werr react
gain 50 n wexp procpilot
flags 50 wds teststn
wnt



DISPLAY 10929.7
wp 5681.8
vs 94
sc 0
wc 250
hzmm 22.73
ts 509.00
rf1 7292.1
rfp 4943.5
th 4
ins 100.000
nm

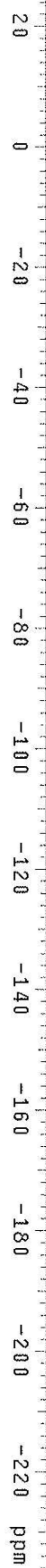
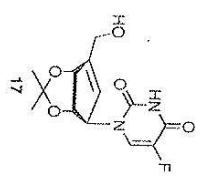
F19 STD

expt std1h

date	NOV 5 2012	DEC. & VT	399.998
solvent	CD3OD	dn	41
file	exp	bpwr	30
ACQUISITION	exp	ROT	-208.0
sfreq	375.333	dm	nmn
in	F19	dmm	C
at	0.640	dmt	200
np	128000	dseq	
sw	100000.0	dres	1.0
fb	51200	homo	n
bs	16	PROCESSING	
twvr	58	lb	0.34
pw	12.0	wffile	
dl	2.000	proc	ft
tof	950.2	fn	not used
nt	120	math	f
ct	32		
rtlock	n	wart	react
gain	20	wexp	procpol
in	n	wbs	
in	n	wht	
dp	y		
hs	nh		

DISPLAY

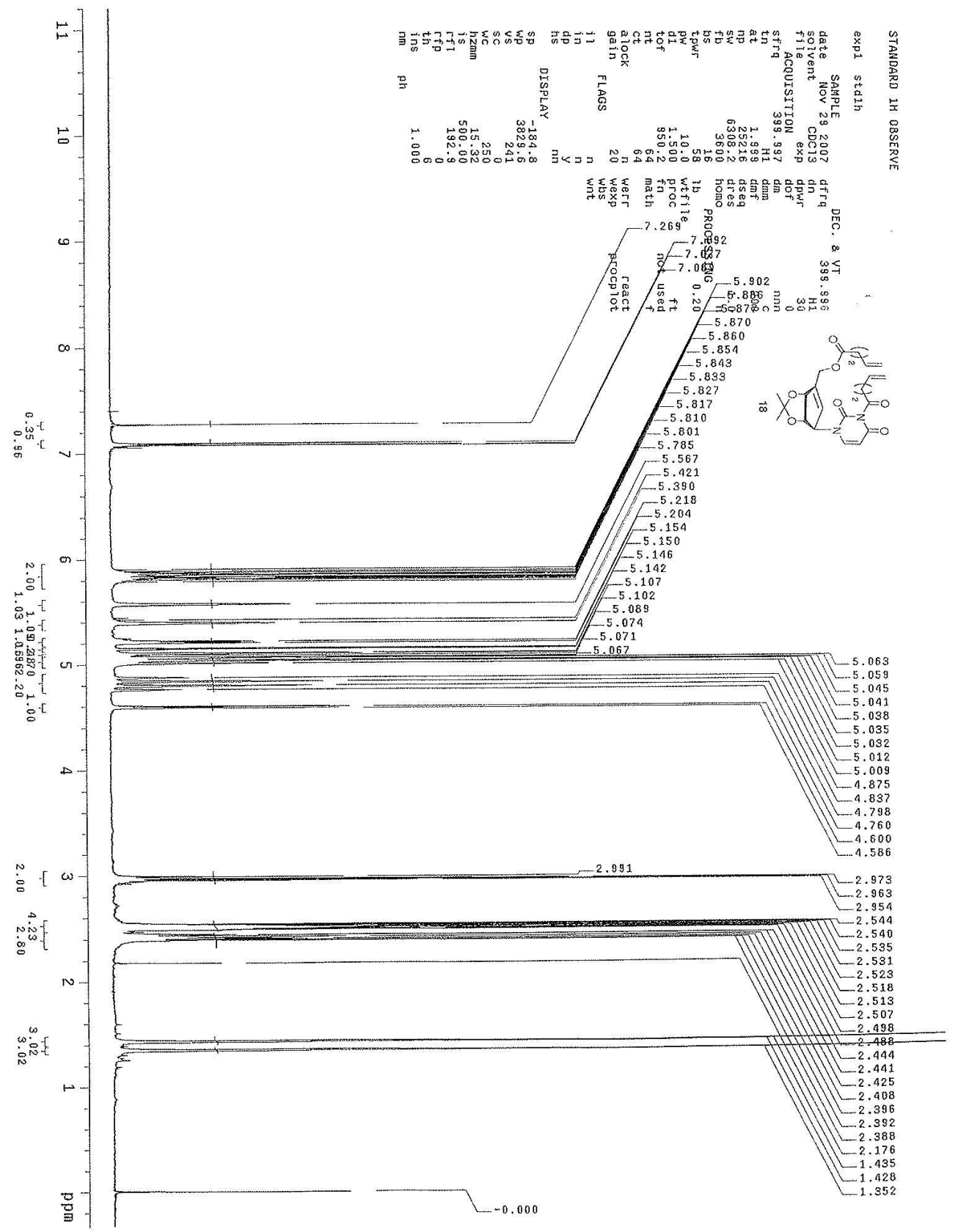
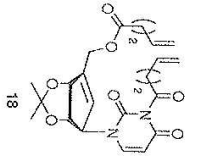
sp	-89137.9
wp	100000.0
vs	2905
sc	0
wc	250
hzmm	400.00
is	500.00
lft	25275.0
lfp	-63862.8
lfs	9
als	100.000
at	



-169.680
-169.696

STANDARD 1H OBSERVE

exp1 st41h
 SAMPLE NOV 29 2007
 SOLVENT CDCl3
 file exp
 ACQUISITION 399.997
 tn H1
 at 1.999
 np 25216
 sw 6398.2
 fb 3600
 bs 16
 tpwr 58
 pw 10.0
 di 1.500
 tof 890.2
 nt 64
 ct 64
 alock n
 gain 20
 flags n
 in n
 in dp y
 hs m
 DISPLAY -184.8
 WP 3829.6
 VS 241
 SC 0
 WC 250
 hzmm 15.32
 IS 500.00
 rfi 192.9
 rfp 0
 lh 6
 ins 6
 nm 1.000
 ph



DEC. & VT 399.996
 dfrq H1
 dn 30
 dpvr 0
 dof
 dm
 dmm
 dmf
 dseq
 dres
 homo
 1b
 wtitle
 proc
 fn
 math
 react
 react
 plot
 wnt

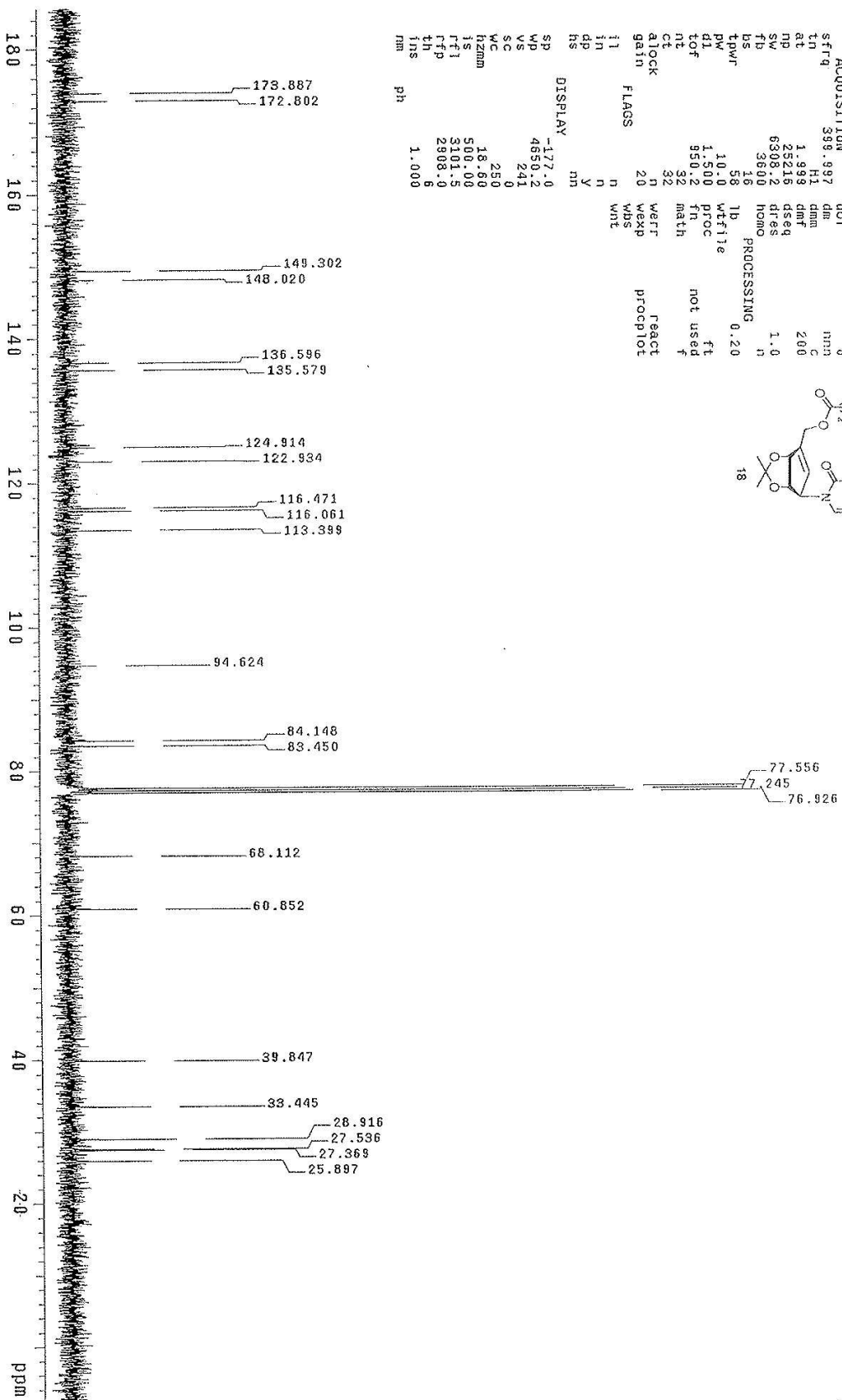
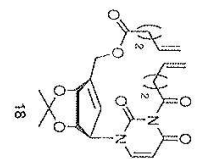
5.063
 5.059
 5.045
 5.041
 5.038
 5.035
 5.032
 5.012
 5.009
 4.875
 4.837
 4.798
 4.760
 4.600
 4.586
 2.991
 2.973
 2.963
 2.954
 2.544
 2.544
 2.540
 2.535
 2.531
 2.523
 2.518
 2.513
 2.507
 2.498
 2.488
 2.444
 2.441
 2.425
 2.408
 2.396
 2.392
 2.388
 2.176
 1.435
 1.428
 1.352

STANDARD 1H OBSERVE

expi staih

SAMPLE DEC. & VT
 date Apr 8 2008 dfirq 399.996
 solvent CDC13 dn H1
 file exp dprf 30
 ACQUISITION dcf 0
 sfrq 399.997 dm mnm
 tn H1 dmm C
 at 1.999 dmf 200
 np 25216 dseq
 sw 6398.2 dres 1.0
 fb 3600 homo n
 bs 16 PROCESSING
 tpwr 58 lb 0.20
 pw 10.0 wffite
 d1 1.500 PROC ft
 tof 950.2 fn not used
 nt 32 math f
 ct 32
 alock n
 gain 20 weff react
 flags n wexp wbs procpilot
 i1 n wnt
 in y
 dp n
 hs m

DISPLAY
 sp -177.0
 wp 4650.2
 vs 241
 sc 0
 wc 250
 hzmm 18.60
 is 509.00
 rfi 3191.5
 rfp 2998.0
 th 6
 ins 1.000
 nm

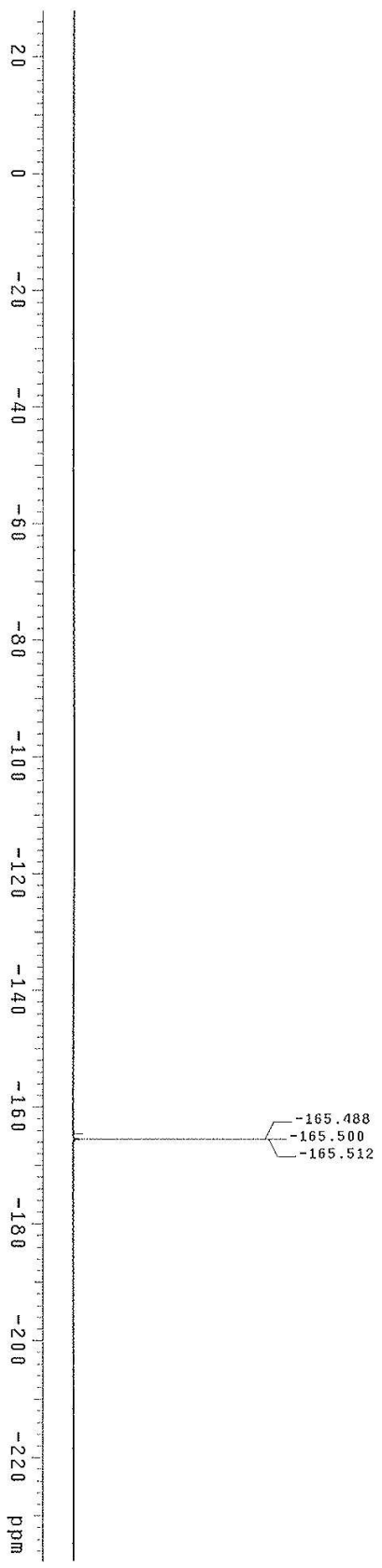
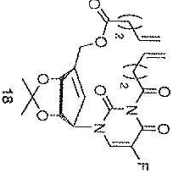


F19_STD

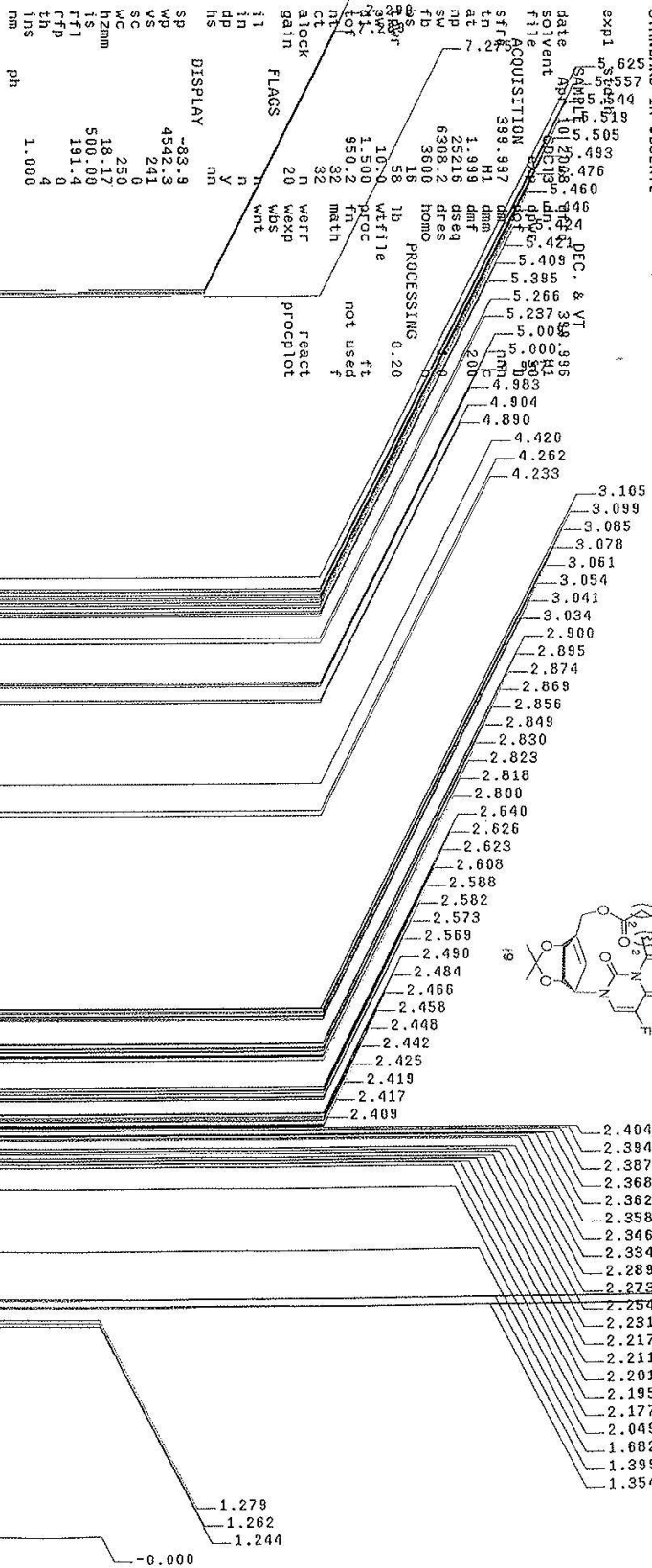
expi stdih

SAMPLE 5 2012 DEC. & VT 399.995
 date Nov 5 2012
 solvent CDC13
 file
 ACQUISITION exp dn 30
 sfrq 378.932 dm -208.0
 th 9.543 dmm mm
 tl 129800 dteq 200
 sp 100000 dfeq 1.0
 fp 51200 home
 bs 16
 tpwr 58 1b wtfile 0.34
 pu 12.0
 dt 2.000 proc ft
 tof 950.2 fn not used
 nt 120 math f
 ct 148
 atock h weff react
 gain 20 wexp procpjot
 flags
 il n
 in n
 dp y
 hs m

DISPLAY
 sp -89508.5
 wp 100000.0
 vs 1258
 sc 0
 wc 250
 hzmm 400.00
 is 500.00
 tfti 27219.0
 tftp -62289.4
 th 5
 fns 100.000
 ai ph



STANDARD 1H OBSERVE

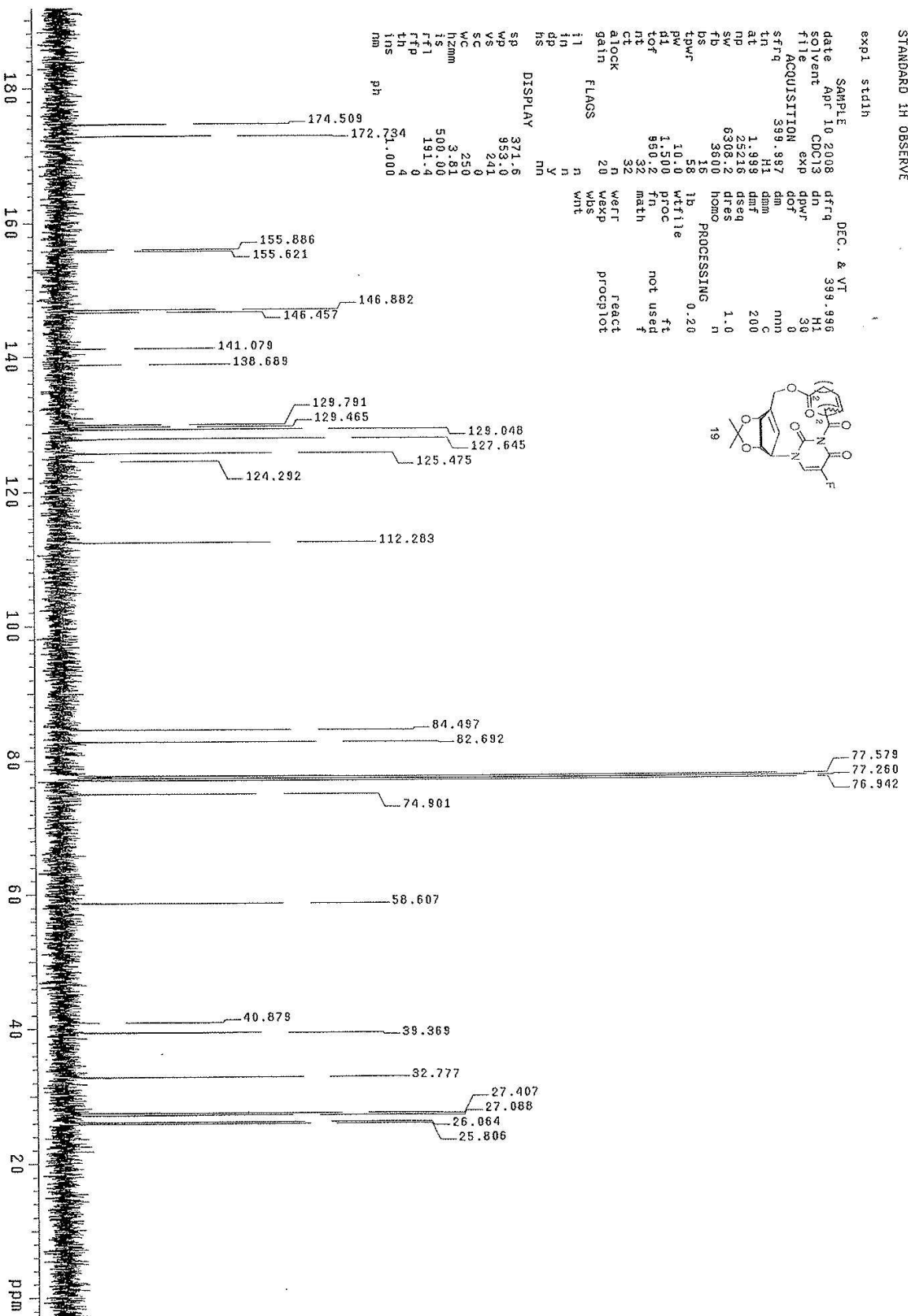
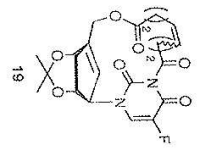


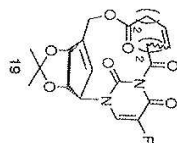
STANDARD 1H OBSERVE

expl stath

SAMPLE
 date Apr 10 2008
 solvent CDCl3
 file exp
 ACQUISITION
 sfrq 399.987
 in H1
 at 1.999
 np 25216
 sw 6398.2
 fb 3600
 bs 16
 tpwr 58
 pw 10.0
 d1 1.500
 tof 850.2
 nt 32
 ct 32
 alock n
 gain 20
 flags n
 i1 n
 in y
 dp n
 hs nm
 sp 371.6
 wp 953.0
 vs 241
 sc 0
 wc 250
 hzmm 3.81
 is 509.00
 rfr 191.4
 rfp 0
 lh 4
 ins 4
 nm

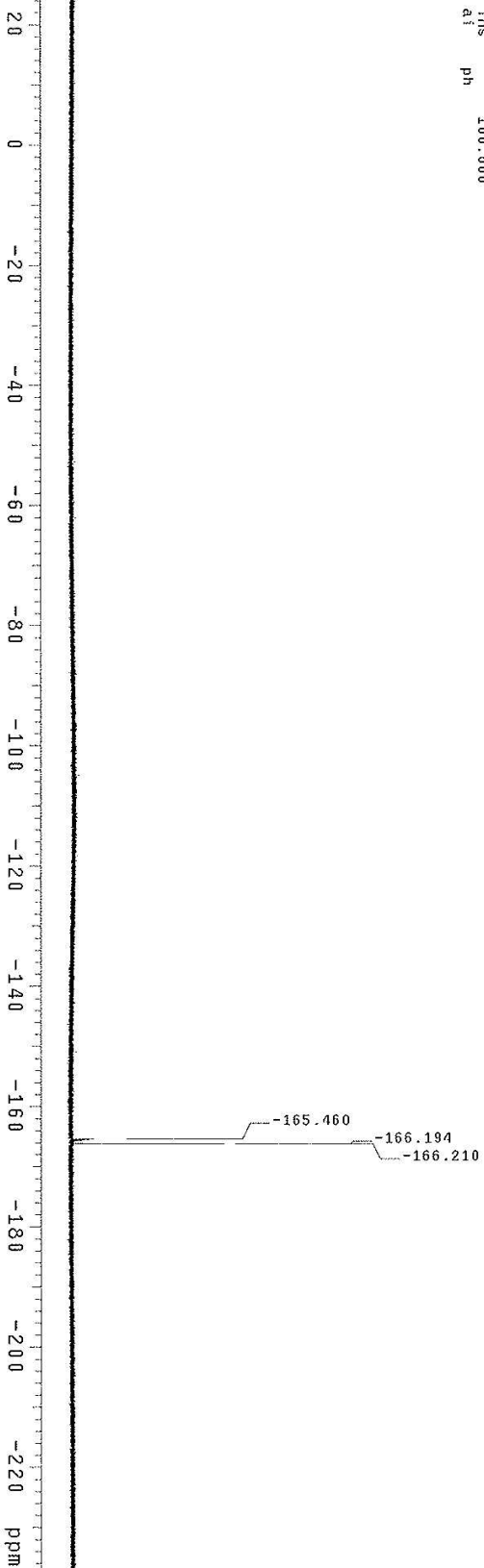
DEC. & VT
 dfrq 399.996
 dn H1
 dpwr 30
 dof 0
 dm nm
 dnm C
 dmf 200
 dseq
 dres 1.0
 homo n
 PROCESSING
 lb 0.20
 wfile
 proc
 fn not used
 math f
 weft n
 wexp n
 wbs react
 wnt procpilot



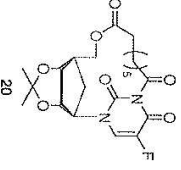


```

F19_STD
exp1 std1h
SAMPLE 5 2012 DEC. & VT
date Nov 5 339.936
solvent CDC13 dn HI
file ACQUISITION exp qpwr -208.0
strq 378.932 dm
tn 0 f13 dmm
at 0 f140 dmt 209
nd 12300 dsetd
zv 10000 dtes 1.0
bz 51210 Home PROCESSING
tpwr 58 1b 0.34
rtw 120 wtfile
rt 2000 proc ft
tof 950.2 fn not used
nt 246 math f
ct 32
atock n weff React
gain 20 wexp wplot
i1 n
in n
dp y
hs n
DISPLAY
SP -89504.1
WP 100000.0
VS 3593
WC 0
h2mm 250
ls 400.00
rfi 500.00
rfp 26947.4
th -62556.6
ins 2
ai ph 100.000
  
```



STANDARD 1H OBSERVE										
exp1	010									0.069
exp2	016									0.000
exp3	088									0.000
exp4	444									0.000
exp5	888									0.000
exp6	888									0.000
exp7	888									0.000
exp8	888									0.000
exp9	888									0.000
exp10	888									0.000
exp11	888									0.000
exp12	888									0.000
exp13	888									0.000
exp14	888									0.000
exp15	888									0.000
exp16	888									0.000
exp17	888									0.000
exp18	888									0.000
exp19	888									0.000
exp20	888									0.000
exp21	888									0.000
exp22	888									0.000
exp23	888									0.000
exp24	888									0.000
exp25	888									0.000
exp26	888									0.000
exp27	888									0.000
exp28	888									0.000
exp29	888									0.000
exp30	888									0.000
exp31	888									0.000
exp32	888									0.000
exp33	888									0.000
exp34	888									0.000
exp35	888									0.000
exp36	888									0.000
exp37	888									0.000
exp38	888									0.000
exp39	888									0.000
exp40	888									0.000
exp41	888									0.000
exp42	888									0.000
exp43	888									0.000
exp44	888									0.000
exp45	888									0.000
exp46	888									0.000
exp47	888									0.000
exp48	888									0.000
exp49	888									0.000
exp50	888									0.000
exp51	888									0.000
exp52	888									0.000
exp53	888									0.000
exp54	888									0.000
exp55	888									0.000
exp56	888									0.000
exp57	888									0.000
exp58	888									0.000
exp59	888									0.000
exp60	888									0.000
exp61	888									0.000
exp62	888									0.000
exp63	888									0.000
exp64	888									0.000
exp65	888									0.000
exp66	888									0.000
exp67	888									0.000
exp68	888									0.000
exp69	888									0.000
exp70	888									0.000
exp71	888									0.000
exp72	888									0.000
exp73	888									0.000
exp74	888									0.000
exp75	888									0.000
exp76	888									0.000
exp77	888									0.000
exp78	888									0.000
exp79	888									0.000
exp80	888									0.000
exp81	888									0.000
exp82	888									0.000
exp83	888									0.000
exp84	888									0.000
exp85	888									0.000
exp86	888									0.000
exp87	888									0.000
exp88	888									0.000
exp89	888									0.000
exp90	888									0.000
exp91	888									0.000
exp92	888									0.000
exp93	888									0.000
exp94	888									0.000
exp95	888									0.000
exp96	888									0.000
exp97	888									0.000
exp98	888									0.000
exp99	888									0.000
exp100	888									0.000



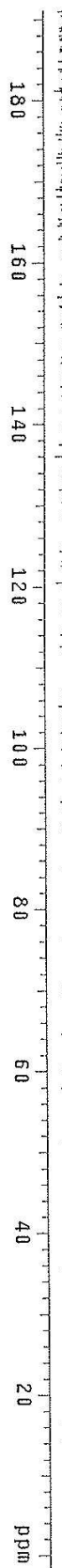
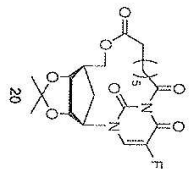
1.12
 0.88 1.00
 1.02 1.04
 0.95 0.96 4.31 0.94 3.23 7.28
 0.96 4.17

STANDARD IN OBSERVE

```

expi stidh
SAMPLE 2008 DEC. & VI 399.996
date Apr 15 2008 dfreq
solvent CDCl3 dn HI
file ACQUISITION exp dpvr 30
sfrq 399.997 dm min 0
ln HI dnm C 200
at 1.999 dmf
np 28216 dseq
sw 6398.2 dres 1.0
fb 3690 homo n
bs 18 1b PROCESSING 0.20
tpwr 58 1b
pw 10.0 wtitle ft
d1 1.500 proc
tof 950.2 fn not used f
nt 32 math
ct 32
atlock n werr React
gain 20 wexp procplot
flags n wnt
il n
in n y
dp y
hs mm
DISPLAY -77.8
sp wp 375.8
vs 244
sc 250
wc 15
hzmax 540.10
ls 193.7
f1 4
f2 4
f3 1.000
f4
f5
f6
f7
f8
f9
f10
f11
f12
f13
f14
f15
f16
f17
f18
f19
f20
f21
f22
f23
f24
f25
f26
f27
f28
f29
f30
f31
f32
f33
f34
f35
f36
f37
f38
f39
f40
f41
f42
f43
f44
f45
f46
f47
f48
f49
f50
f51
f52
f53
f54
f55
f56
f57
f58
f59
f60
f61
f62
f63
f64
f65
f66
f67
f68
f69
f70
f71
f72
f73
f74
f75
f76
f77
f78
f79
f80
f81
f82
f83
f84
f85
f86
f87
f88
f89
f90
f91
f92
f93
f94
f95
f96
f97
f98
f99
f100
f101
f102
f103
f104
f105
f106
f107
f108
f109
f110
f111
f112
f113
f114
f115
f116
f117
f118
f119
f120
f121
f122
f123
f124
f125
f126
f127
f128
f129
f130
f131
f132
f133
f134
f135
f136
f137
f138
f139
f140
f141
f142
f143
f144
f145
f146
f147
f148
f149
f150
f151
f152
f153
f154
f155
f156
f157
f158
f159
f160
f161
f162
f163
f164
f165
f166
f167
f168
f169
f170
f171
f172
f173
f174
f175
f176
f177
f178
f179
f180
f181
f182
f183
f184
f185
f186
f187
f188
f189
f190
f191
f192
f193
f194
f195
f196
f197
f198
f199
f200
f201
f202
f203
f204
f205
f206
f207
f208
f209
f210
f211
f212
f213
f214
f215
f216
f217
f218
f219
f220
f221
f222
f223
f224
f225
f226
f227
f228
f229
f230
f231
f232
f233
f234
f235
f236
f237
f238
f239
f240
f241
f242
f243
f244
f245
f246
f247
f248
f249
f250
f251
f252
f253
f254
f255
f256
f257
f258
f259
f260
f261
f262
f263
f264
f265
f266
f267
f268
f269
f270
f271
f272
f273
f274
f275
f276
f277
f278
f279
f280
f281
f282
f283
f284
f285
f286
f287
f288
f289
f290
f291
f292
f293
f294
f295
f296
f297
f298
f299
f300
f301
f302
f303
f304
f305
f306
f307
f308
f309
f310
f311
f312
f313
f314
f315
f316
f317
f318
f319
f320
f321
f322
f323
f324
f325
f326
f327
f328
f329
f330
f331
f332
f333
f334
f335
f336
f337
f338
f339
f340
f341
f342
f343
f344
f345
f346
f347
f348
f349
f350
f351
f352
f353
f354
f355
f356
f357
f358
f359
f360
f361
f362
f363
f364
f365
f366
f367
f368
f369
f370
f371
f372
f373
f374
f375
f376
f377
f378
f379
f380
f381
f382
f383
f384
f385
f386
f387
f388
f389
f390
f391
f392
f393
f394
f395
f396
f397
f398
f399
f400
f401
f402
f403
f404
f405
f406
f407
f408
f409
f410
f411
f412
f413
f414
f415
f416
f417
f418
f419
f420
f421
f422
f423
f424
f425
f426
f427
f428
f429
f430
f431
f432
f433
f434
f435
f436
f437
f438
f439
f440
f441
f442
f443
f444
f445
f446
f447
f448
f449
f450
f451
f452
f453
f454
f455
f456
f457
f458
f459
f460
f461
f462
f463
f464
f465
f466
f467
f468
f469
f470
f471
f472
f473
f474
f475
f476
f477
f478
f479
f480
f481
f482
f483
f484
f485
f486
f487
f488
f489
f490
f491
f492
f493
f494
f495
f496
f497
f498
f499
f500
f501
f502
f503
f504
f505
f506
f507
f508
f509
f510
f511
f512
f513
f514
f515
f516
f517
f518
f519
f520
f521
f522
f523
f524
f525
f526
f527
f528
f529
f530
f531
f532
f533
f534
f535
f536
f537
f538
f539
f540
f541
f542
f543
f544
f545
f546
f547
f548
f549
f550
f551
f552
f553
f554
f555
f556
f557
f558
f559
f560
f561
f562
f563
f564
f565
f566
f567
f568
f569
f570
f571
f572
f573
f574
f575
f576
f577
f578
f579
f580
f581
f582
f583
f584
f585
f586
f587
f588
f589
f590
f591
f592
f593
f594
f595
f596
f597
f598
f599
f600
f601
f602
f603
f604
f605
f606
f607
f608
f609
f610
f611
f612
f613
f614
f615
f616
f617
f618
f619
f620
f621
f622
f623
f624
f625
f626
f627
f628
f629
f630
f631
f632
f633
f634
f635
f636
f637
f638
f639
f640
f641
f642
f643
f644
f645
f646
f647
f648
f649
f650
f651
f652
f653
f654
f655
f656
f657
f658
f659
f660
f661
f662
f663
f664
f665
f666
f667
f668
f669
f670
f671
f672
f673
f674
f675
f676
f677
f678
f679
f680
f681
f682
f683
f684
f685
f686
f687
f688
f689
f690
f691
f692
f693
f694
f695
f696
f697
f698
f699
f700
f701
f702
f703
f704
f705
f706
f707
f708
f709
f710
f711
f712
f713
f714
f715
f716
f717
f718
f719
f720
f721
f722
f723
f724
f725
f726
f727
f728
f729
f730
f731
f732
f733
f734
f735
f736
f737
f738
f739
f740
f741
f742
f743
f744
f745
f746
f747
f748
f749
f750
f751
f752
f753
f754
f755
f756
f757
f758
f759
f760
f761
f762
f763
f764
f765
f766
f767
f768
f769
f770
f771
f772
f773
f774
f775
f776
f777
f778
f779
f780
f781
f782
f783
f784
f785
f786
f787
f788
f789
f790
f791
f792
f793
f794
f795
f796
f797
f798
f799
f800
f801
f802
f803
f804
f805
f806
f807
f808
f809
f810
f811
f812
f813
f814
f815
f816
f817
f818
f819
f820
f821
f822
f823
f824
f825
f826
f827
f828
f829
f830
f831
f832
f833
f834
f835
f836
f837
f838
f839
f840
f841
f842
f843
f844
f845
f846
f847
f848
f849
f850
f851
f852
f853
f854
f855
f856
f857
f858
f859
f860
f861
f862
f863
f864
f865
f866
f867
f868
f869
f870
f871
f872
f873
f874
f875
f876
f877
f878
f879
f880
f881
f882
f883
f884
f885
f886
f887
f888
f889
f890
f891
f892
f893
f894
f895
f896
f897
f898
f899
f900
f901
f902
f903
f904
f905
f906
f907
f908
f909
f910
f911
f912
f913
f914
f915
f916
f917
f918
f919
f920
f921
f922
f923
f924
f925
f926
f927
f928
f929
f930
f931
f932
f933
f934
f935
f936
f937
f938
f939
f940
f941
f942
f943
f944
f945
f946
f947
f948
f949
f950
f951
f952
f953
f954
f955
f956
f957
f958
f959
f960
f961
f962
f963
f964
f965
f966
f967
f968
f969
f970
f971
f972
f973
f974
f975
f976
f977
f978
f979
f980
f981
f982
f983
f984
f985
f986
f987
f988
f989
f990
f991
f992
f993
f994
f995
f996
f997
f998
f999

```



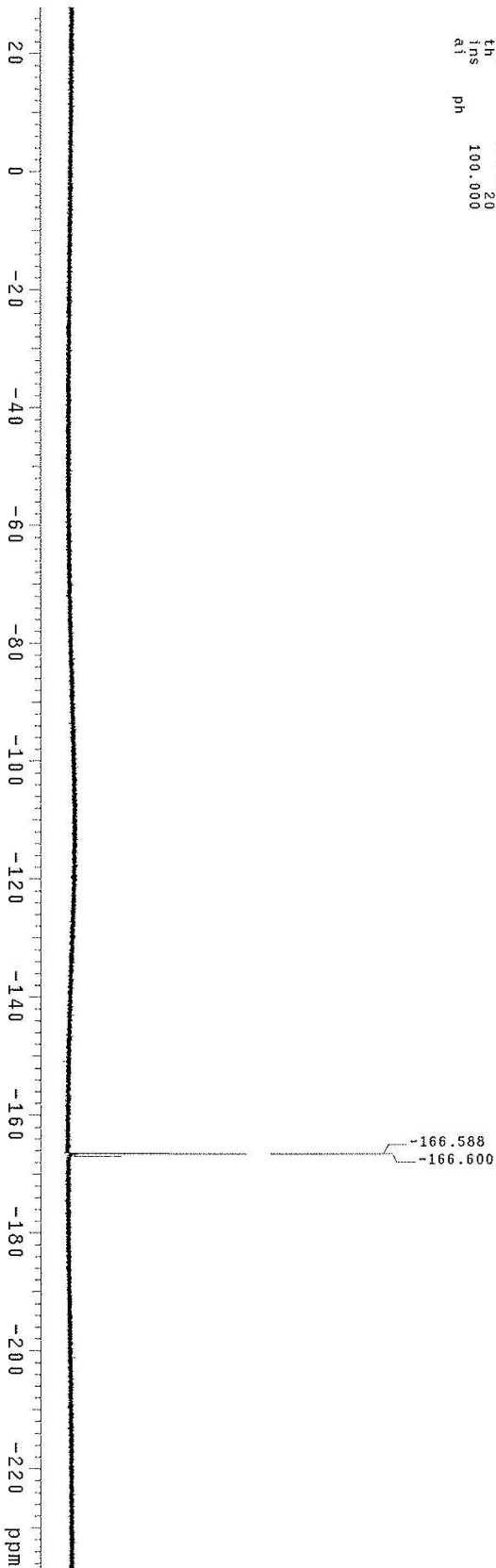
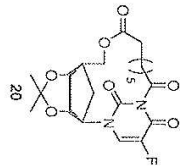
F19 STD

expi std1h

date	Nov 5 2012	dfreq	399.996
solvent	CDC13	dn	H1
title	ACQUISITION exp	dpwr	30
strq	376.332	doF	-208.0
th	F19	am	mm
at	0.840	amf	C
mp	12800	dseq	200
sw	100000.0	dres	1.0
td	51200	homo	n
DS	56	PROCESSING	n
tpwr	12.00	1b	0.34
pv	2.00	ufile	
tdf	350.2	prog	ft
cl	964	math	not used
gain	112	weff	f
atock	20	wexp	react
flags	20	wpl	procp1ot
in	n		
dn	n		
hs	y		

DISPLAY nm

SP	-89505.9
WD	100000.0
VS	7082
SC	0
WC	250
h2mm	400.00
ts	500.00
rfl	28802.5
rffp	-62703.4
th	20
ins	100.000
ai	ph



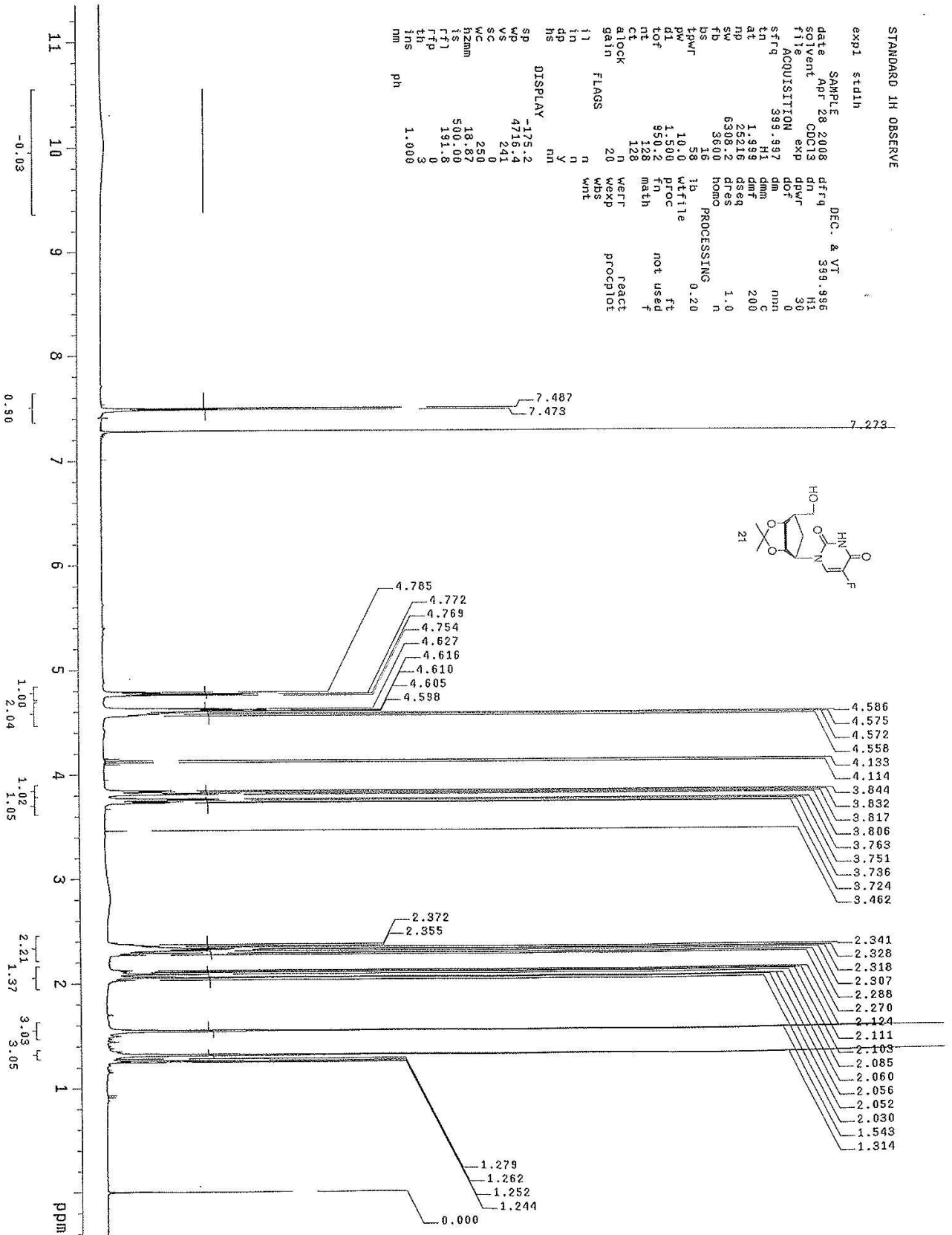
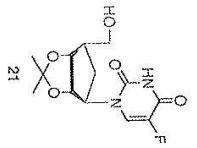
STANDARD 1H OBSERVE

```

exp1 stidh
SAMPLE
date Apr 28 2008
solvent CDCl3
file exp
sfrq 399.997
at 1.999
np 25216
sw 6398.2
fb 3600
bs 16
tprwf 58
pw 10.0
d1 1.500
lof 950.2
nt 128
ct 128
alock n
gain 20
flags n
ii n
in n
dp y
hs nm
DISPLAY
sp -175.2
wp 4716.4
vs 241
wc 250
h2mm 18.87
is 500.00
ftf 191.8
tth 0
ins 3
nm 1.000
  
```

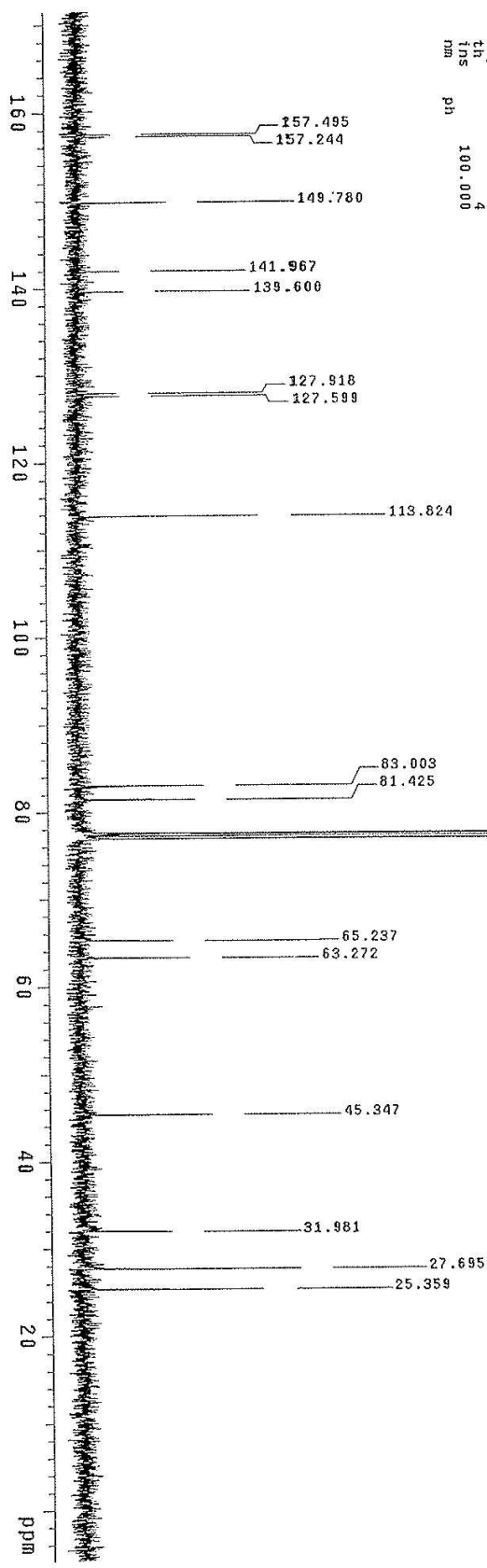
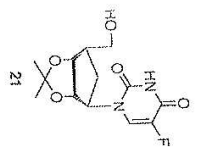
```

DEC. & VT
dfrq 399.996
dn H1
exp 30
dprf 0
dof mnm
dm c
dmm 200
dmf 1.0
dseq 1.0
dres n
homo n
PROCESSING
ib 0.20
wffile
proc ft
fn not used
math f
werr react
wexp procplot
wbs
wnt
  
```



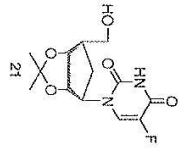
13C OBSERVE

expt statisc
SAMPLE Apr 28 2008 DEC. & VT 399.996
date CDD13 exp dn H1
solvent exp dpvr -200.0
file ACQUISITION dof 38
stfrq 100.568 dm YYY
tn C13 dmn W
at 1.199 dmt 9000
np 59958 dseq
sw 25000.0 dres 1.0
fd 13800 homo
bs 16 PROCESSING 1.00
tpwr 58 1b
pw 7.0 wftite
di 3.000 PROC ft
tof 0 fn not used f
nt 800 math
ct 720
atlock 50 werr react
gain 50 wexp procpot
11 n n WBS teststn
1n n n Wnt
dp y
hs nm
DISPLAY 2040.9
sp 2923.7
wp 85
vs 250
wc 11.85
h2mm 500.00
IS 10782.4
Tf1 7767.4
TfP 100.000
Tns
nm



F19 STD

expi std1h



SAMPLE DEC. & VI
 date Nov 5 2012 dfrq 399.998
 solvent CD3OD dn HI
 file C0500 dpwr 30
 ACQUISITION exp -208.0
 sfrq 376.333 dm mmp
 tn F19 dm mmp
 at 0.640 dmf C
 mp 128000 dseq 200
 sw 100000.0 dres 1.0
 fb 51200 homo n
 bs 16 PROCESSING
 tbwr 58 1b 0.34
 pw 12.0 wtfile
 dl 2.000 proc fi
 tof 950.2 fn not used
 nt 48 math f
 ct 48
 atock n weff react
 gain 20 wexp procp1ot
 wbs
 wnt

DISPLAY
 sp -89243.2
 vp 100000.0
 vs 3833
 sc 0
 wc 250
 hzmm 400.00
 rfi 500.00
 rfp 25380.3
 th -63862.9
 tns 100.000
 a) ph

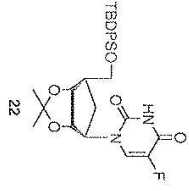


-169.664
 -169.680

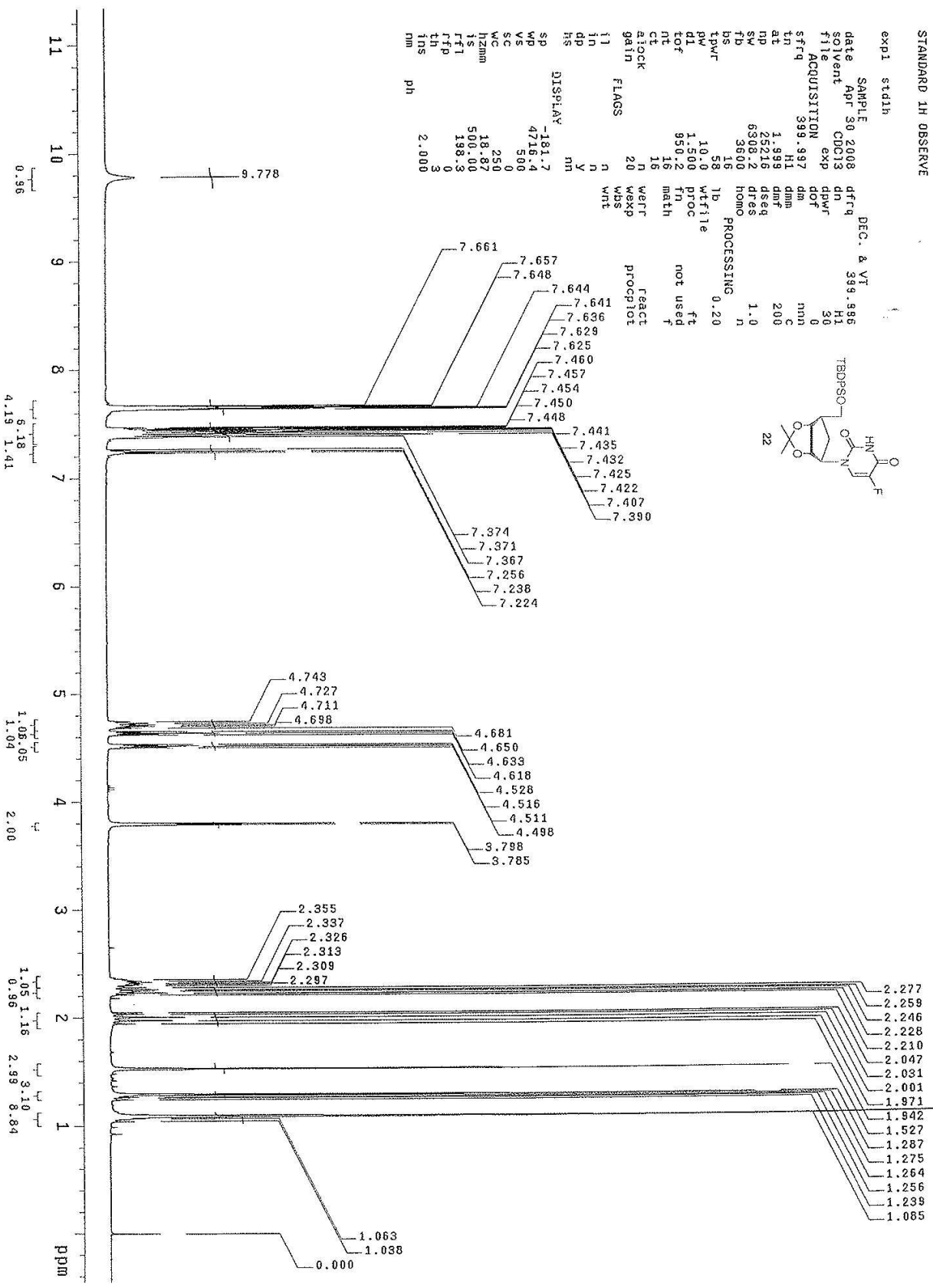
STANDARD 1H OBSERVE

expt stath

SAMPLE DEC. & VI
 date Apr 30 2008 dfrq 399.596
 solvent CDCl3 dn H1
 file exp dpwr 30
 ACQUISITION 0
 sffrq 399.997 dm nnn
 tn H1 dmm c
 at 1.999 dmf 200
 np 25216 dseq
 SW 6398.2 dres
 fb 3600 homo 1.0
 bs 16 PROCESSING
 tpwr 58 lb 0.20
 gw 10.0 wfile
 dl 1.500 proc ft
 tof 950.2 fn not used
 nt 16 math f
 ct 16
 aiocck n werr
 gain 20 wexp
 wbs
 wnt



DISPLAY	ph	react	procplot
-81.7			
4716.4			
580			
0			
250			
18.87			
509.00			
198.3			
0			
3			
2.000			



13C OSERVE

expt std13c

SAMPLE

date Apr 30 2008

solvent CDCl3

file

ACQUISITION

stf9

in

at

np

sw

fb

bs

tpwr

pw

di

tof

nt

ct

alock

gain

ii

in

dp

hs

sp

wp

vs

sc

wc

hzmh

is

rf1

lh

ns

nm

DEC. & VT

388.946

133.433

128.039

82.946

135.830

135.777

133.501

130.0

130.0

130.0

130.0

130.0

130.0

130.0

130.0

130.0

130.0

130.0

130.0

130.0

130.0

130.0

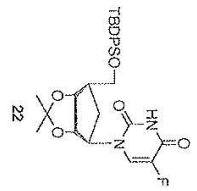
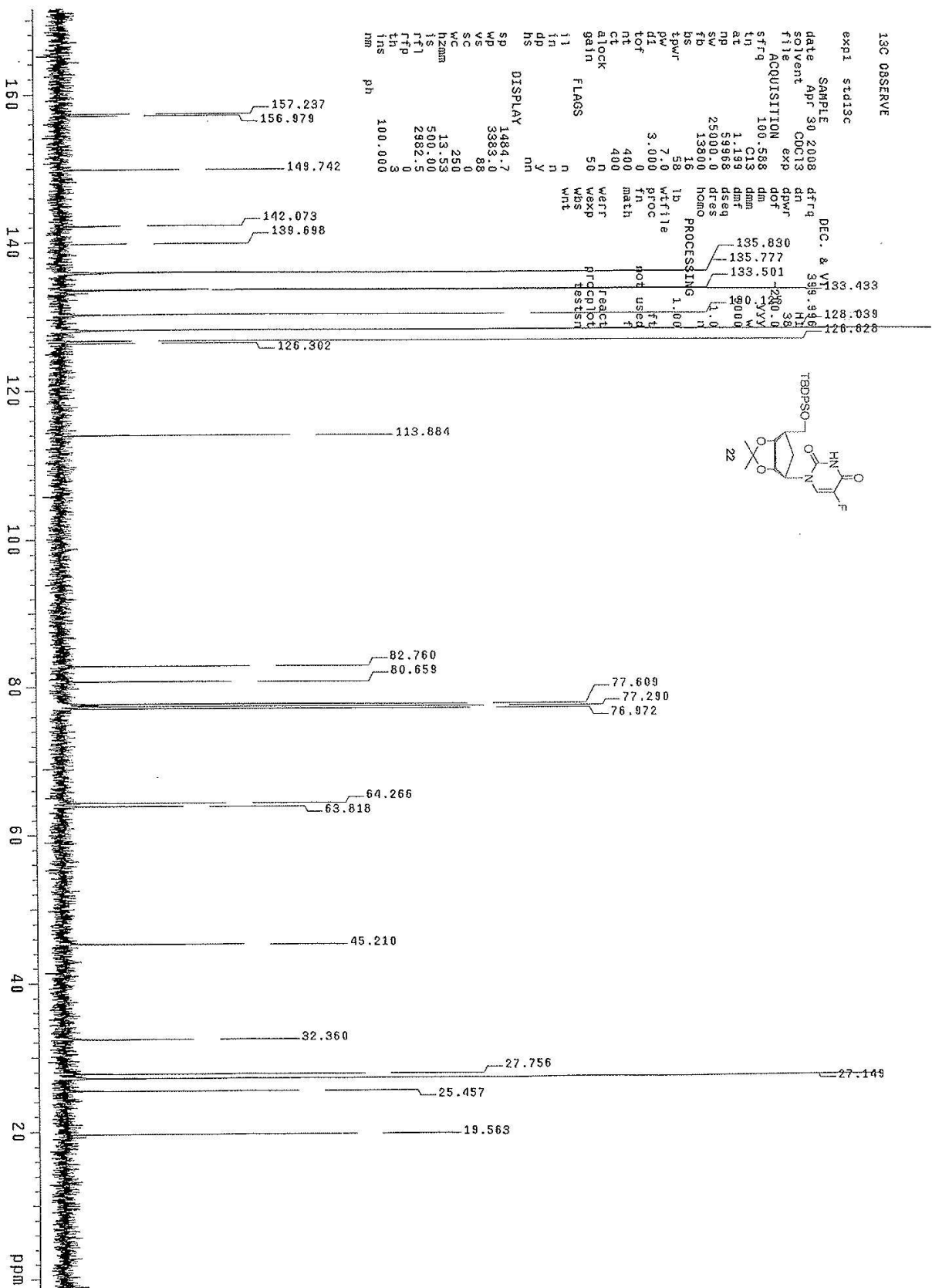
130.0

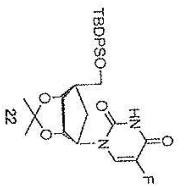
130.0

130.0

130.0

130.0





```

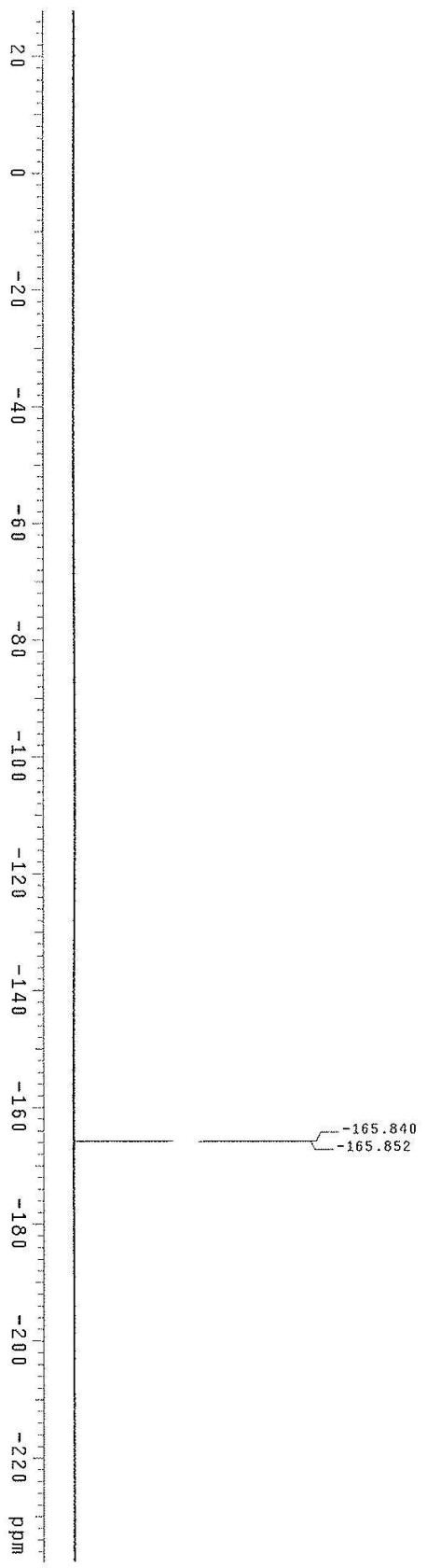
F19.STD
expi stdln
SAMPLE 5 2012 DEC. & VT
solvent NOV CDC13 dn 399.996
f1le ACQUISITION exp 30 H1
strq 378-392 gof -208.0
tpr 0 f13 dm mm
at 128940 dmf 200
sp 100000.0 dseq 1.0
fn 51216 files n
tpr 58 1b Homo PROCESSING 0.34
dt 1200 Wtfile
tof 550.2 proc ft
nt 126 math not used
ct 148 weff f
stock n weff React
gain 20 Wexp Wbs procpilot
ii n Wnt
in n
dn Y
bs n

```

```

DISPLAY
SP -89512.8 mh
WP 100000.0
VS 1691
SC 0
WC 250
h2mm 400.00
IS 500.00
rf1 27095.4
rfp -62417.4
th 5
ins 100.000
ai ph

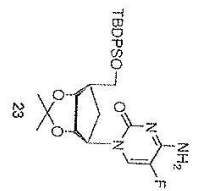
```



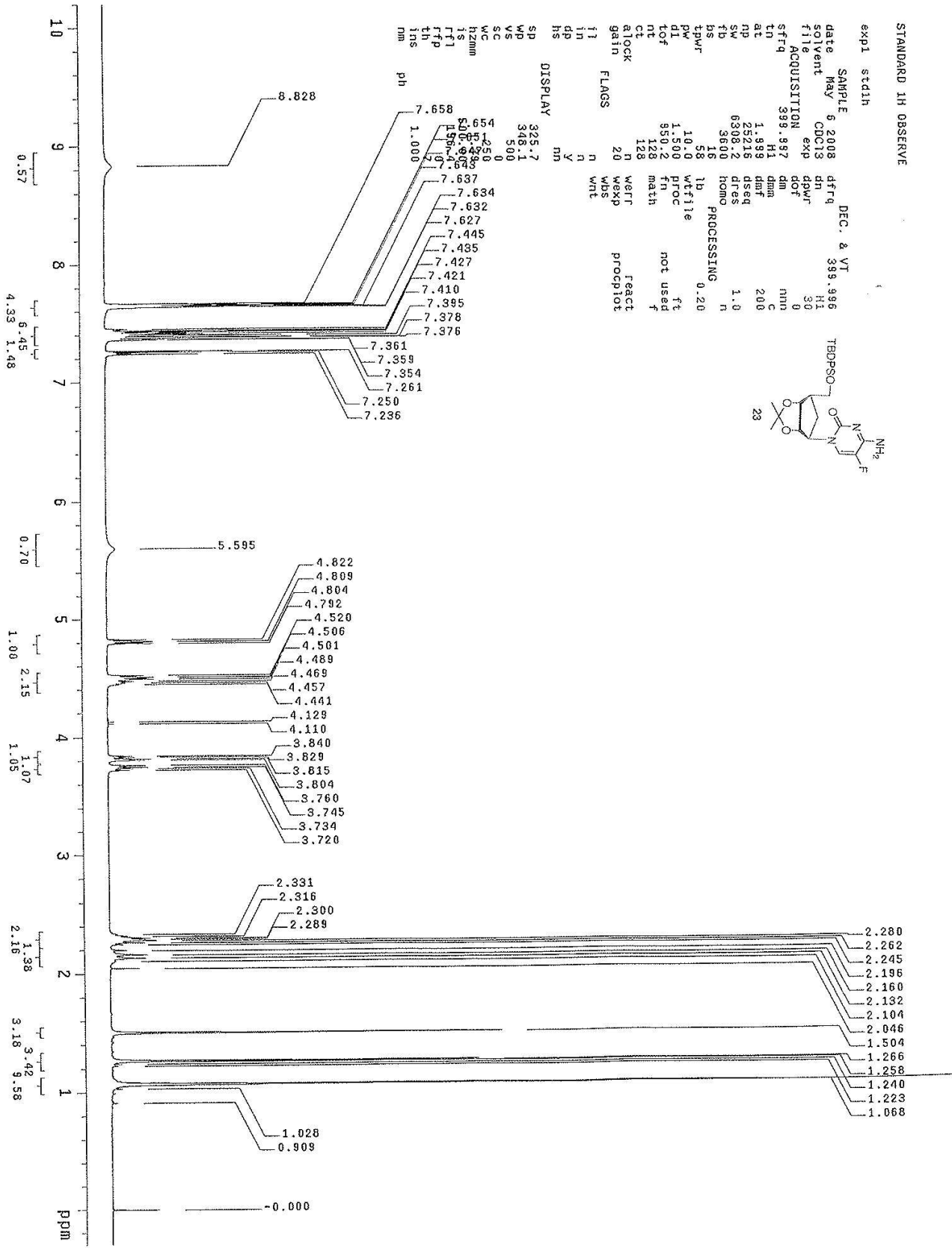
STANDARD 1H OBSERVE

exp1 std1h

SAMPLE 6 2008 DEC. & VT
 solvent May 6 2008 399.996
 file ODC13 dn H1
 ACQUISITION exp H1 30
 sfreq 399.997 dm 0
 tn H1 dmm nm
 at 1.999 dref c
 np 25216 dres 200
 sv 6308.2 dres 1.0
 fb 3600 homo n
 bs 16 PROCESSING 0.20
 tpwr 58 lb wtfile
 pl 10.0 vrfie ft
 dl 1.500 proc not used
 tof 850.2 fn
 nt 128 math f
 ct 128
 alock n warr react
 gain 20 wexp wds
 flags n wnt
 in n
 dp y
 hs mh

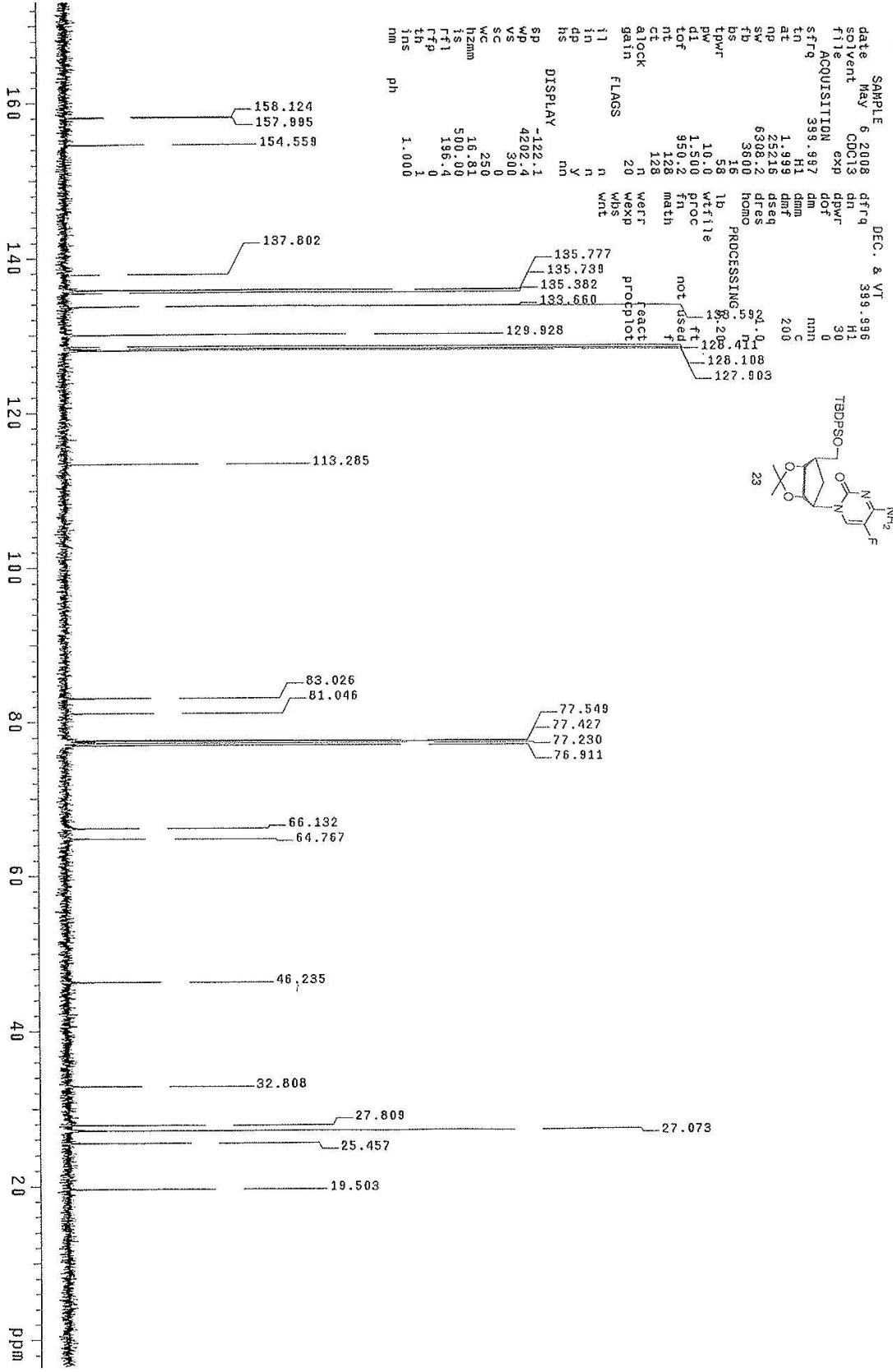
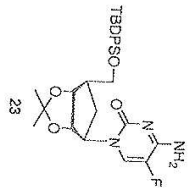


DISPLAY 325.7
 WD 348.1
 VS 500
 WC 0
 SC 0
 IS 500
 Hzmm 1250
 ffl 1500
 th 1500
 ins nm



STANDARD 1H OBSERVE

exp1 stain



SAMPLE 6 2008 DEC. & VI 399.996
 date May 6 2008
 solvent CDCl3
 file exp
 ACQUISITION 399.997
 sfrq H1
 tn H1
 at 1.999
 np 25216
 sw 6308.2
 fb 3600
 bs 16
 tpwr 58
 pw 10.0
 di 1.500
 tof 950.2
 nt 128
 ct 128
 alock n
 gain 20
 flags n
 i1 n
 in n
 dp y
 hs n
 DISPLAY -122.1
 sp 4202.4
 wp 300
 vs 0
 sc 250
 wc 16.81
 hzmm 500.99
 is 196.4
 rfp 0
 fh 1
 ins 1.000
 nm

DEC. & VI 399.996
 dr H1
 dbr 30
 dof 0
 dm nnn
 dmm c
 dmf 200
 dseq
 dres
 homo
 lb
 wfile
 proc
 fn
 math
 not used
 f
 react
 procpilot
 wbs
 wht

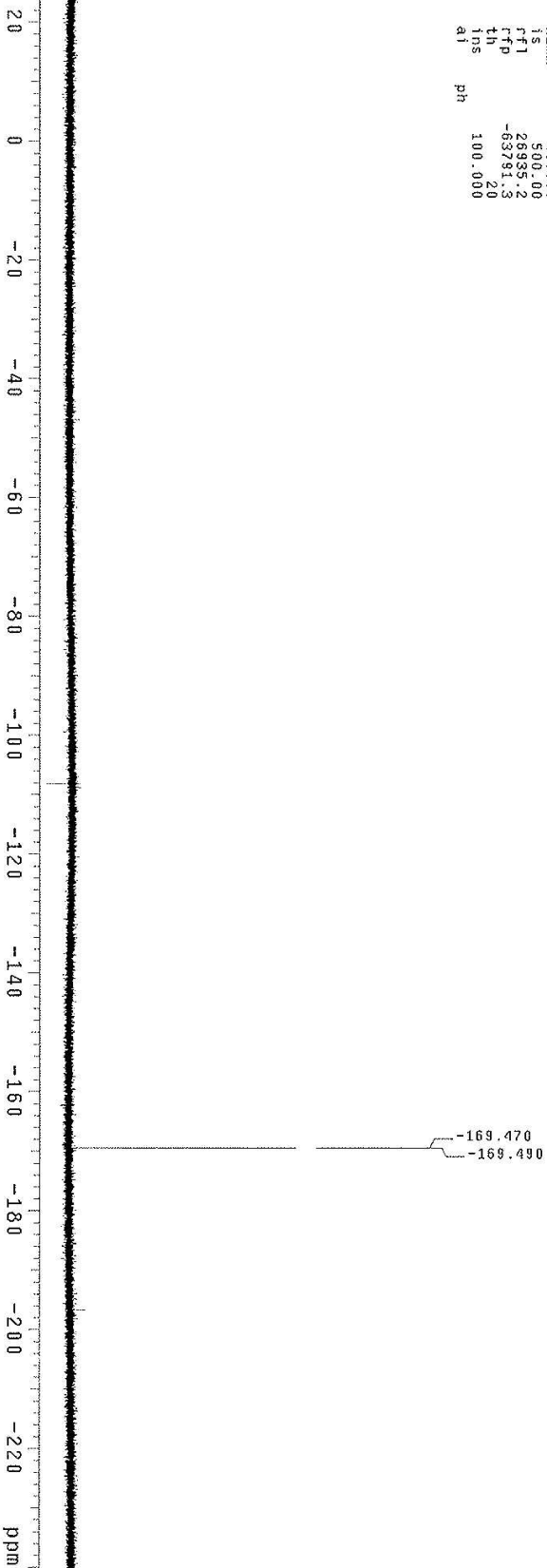
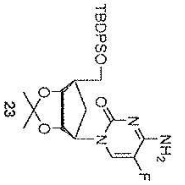
S/N: 0.1
 8.203
 128.411
 128.108
 127.903

F19 STD

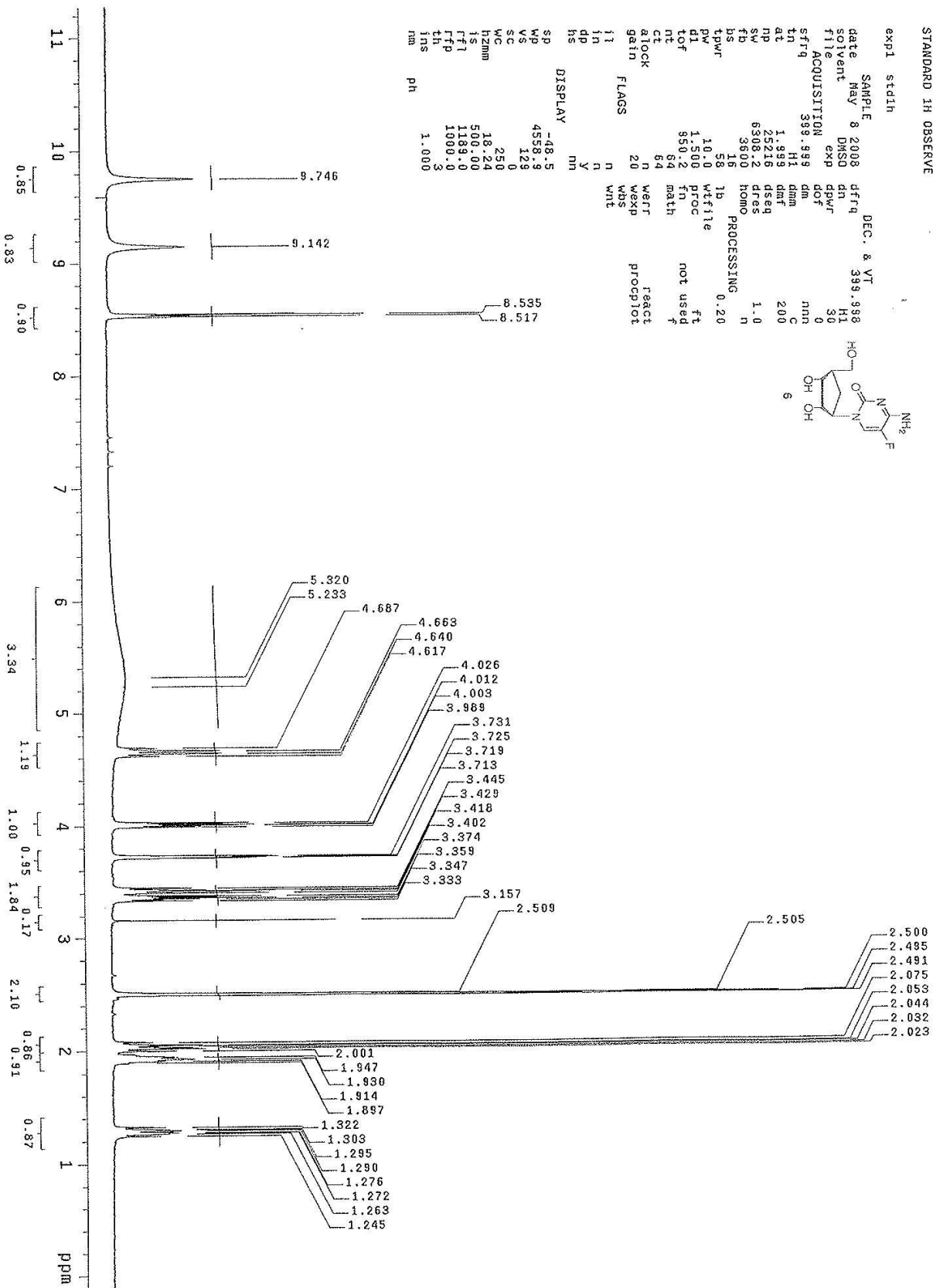
expi std.in

SAMPLE S_2012 DEC. & VT
date NOV 5 2012 dfrq 399.996
event cdc13 dn 30
f1 ACQUISITION exp dpr 3
sfrq 376.332 dm -208.0
tn F15 dmm mm
at 0.548 dmf C
na 128000 dseg 200
sw 100000.0 dres 1.0
fb 51200 homo PROCESSING
bs 16
tpwr 58 lb 0.34
pw 12.0 wfile
d1 2.000 proc ft
tof 950.2 fn not used
nt 120 math
ct 120
ajock n werr react
gain 2 wexp procplot
i1 n wnt
ia n
dp Y
hs mn

DISPLAY
SP -90726.6
WP 100000.0
VS 36061
SC 0
WC 250
h2mm 400.00
is 500.00
rf1 26935.2
rfp -63791.3
th 20
ins 100.000
aj ph



STANDARD 1H OBSERVE



13C NMR SPECTRUM

exp1 sid13c

SAMPLE

DEC. & VI

date May 8 2008 399.998

solvent DMSO exp H1

file exp dofw -200.0

ACQUISITION dofw 38

sfrq 100.589 dm yyy

tn C13 dnm v

at 1.19 dmf 9000

np 5988 dseq 1.0

sw 25000.0 dres homo

fb 13800 PROCESSING 1.00

bs 16 lb

tpwr 58 wifile

pw 7.0 proc ft

d1 3.000 fn not used

tof 0 math f

nt 12000

ct 12000

ALOCK N

gain 50

flags N

ii n

in n

dp y

hs nm

DISPLAY

sp -190.7

wp 16688.3

vs 225

sc 0

wc 250

hzmm 66.75

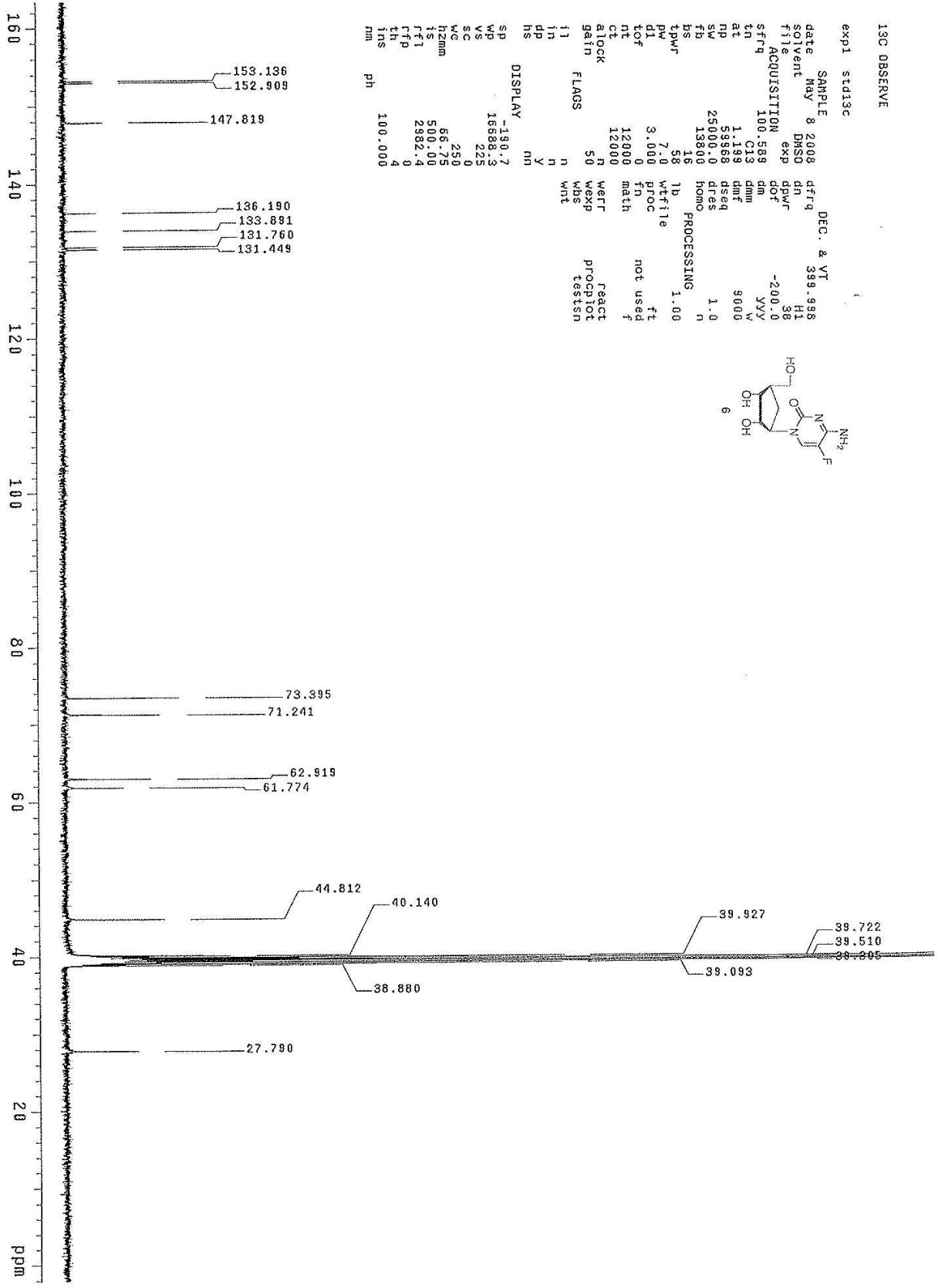
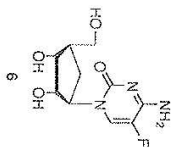
ts 500.00

rf1 2982.4

rfp 0

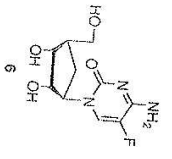
th 4

ins 100.000



F19 STD

expt stdIn



SAMPLE 5 2012 DEC. & VT
 date NOV 5 2012 dfrq 399.998
 s91e 0000 dph H4
 f11 ACQUISITION exp -208.0
 sfreq 376.333 dm rpp
 tn F19 ssm C
 at 0.640 dseg 208
 mp 128000 dres 1.0
 sw 100000.0 homo n
 fb 51200 PROCESSING 0.34
 bs 16
 t0wr 58 lb wtfile
 pw 12.0 proc ft
 d1 2.000 fn not used
 tof 950.2 math f
 nt 48
 ct 48
 r10ck n weff react
 gain 20 wexp wscp
 wbs
 wnt
 i1 n
 in n
 dp y
 hs

DISPLAY
 sp -89246.4
 wp 100000.0
 vs 3618
 sc 0
 wc 250
 hzmm 400.00
 fs 500.00
 rfi 24890.5
 rfb -64355.9
 th 20
 tns 100.000
 at ph

