

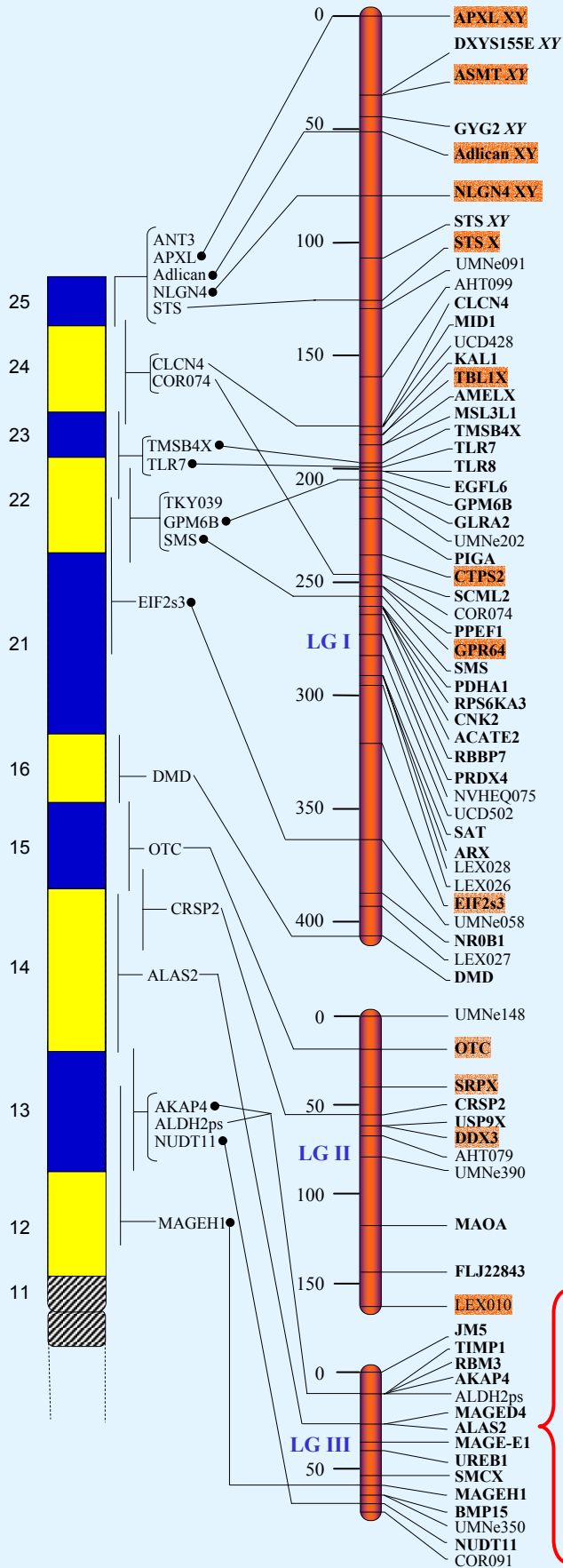
ECAXp

FISH

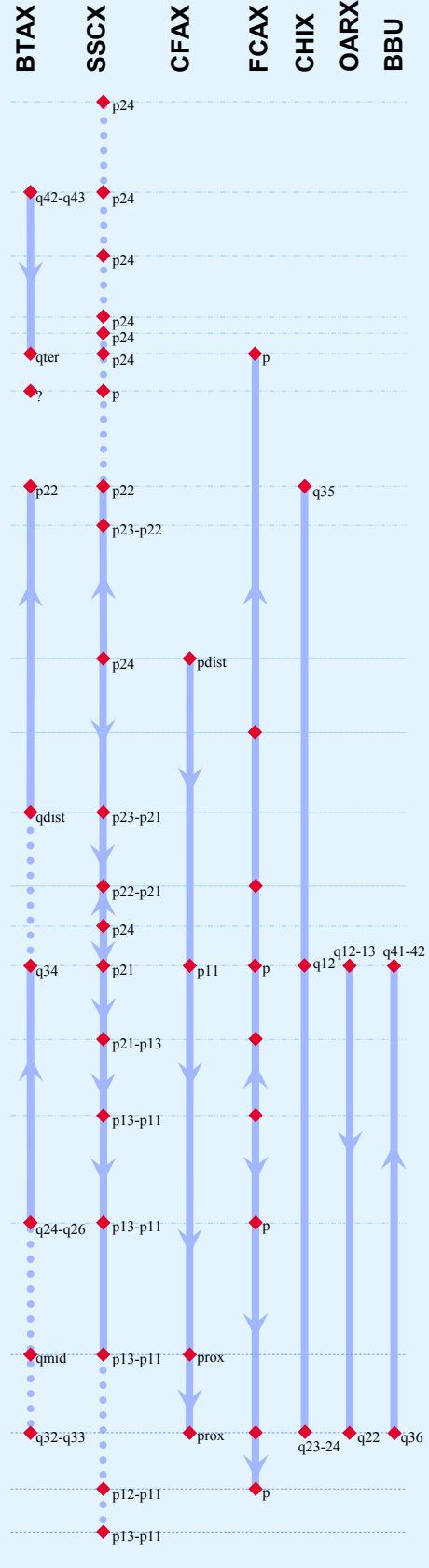
ECAXp RH

HSAXp
Mbps

MMUX
Mbps



9.1	APXL	140.9
1.1	ANT3	--
1.3	DXYS155E	--
1.3	ASMT	--
2.3	GYG2	--
2.8	Adlican	--
5.2	NLGN4	84.1
6.5	STS	--
9.5	CLCN4	MMU7
9.8	MID1	157.8
7.9	KAL1	--
8.8	TBL1X	67.2
10.6	AMELX	157.3
11.1	MSL3L1	156.7
12.3	TMSB4X	155.2
12.2	TLR7	155.3
12.2	TLR8	155.2
12.9	EGFL6	154.5
13.1	GPM6B	154.3
13.9	GLRA2	153.1
14.6	PIGA	152.4
15.9	CTPS2	150.9
17.6	SCML2	149.1
18.0	PPEF1	148.6
18.3	GPR64	148.4
21.3	SMS	145.4
18.7	PDHA1	148.1
19.5	RPS6KA3	147.2
20.7	CNK2	145.8
23.0	ACATE2	143.2
16.2	RBBP7	150.8
23.0	PRDX4	143.3
23.1	SAT	143.2
24.3	ARX	83.0
23.4	EIF2s3	83.9
29.6	NR0B1	75.9
30.4	DMD	74.8
37.2	OTC	8.8
37.0	SRPX	8.5
39.5	CRSP2	11.2
40.0	USP9X	11.7
40.2	DDX3	11.8
42.6	MAOA	15.1
43.0	FLJ22843	15.6
47.4	MG61	6.7
47.9	JMS	6.2
46.4	TIMP1	19.4
47.4	RBM3	6.7
48.8	AKAP4	5.6
50.7	MAGED4	138.5
54.0	ALAS2	138.2
50.7	MAGE-E1	95.0
52.5	UREB1	139.6
52.1	SMCX	139.9
54.4	MAGEH1	141.3
49.5	BMP15	4.9
50.1	NUDT11	4.8



centromere

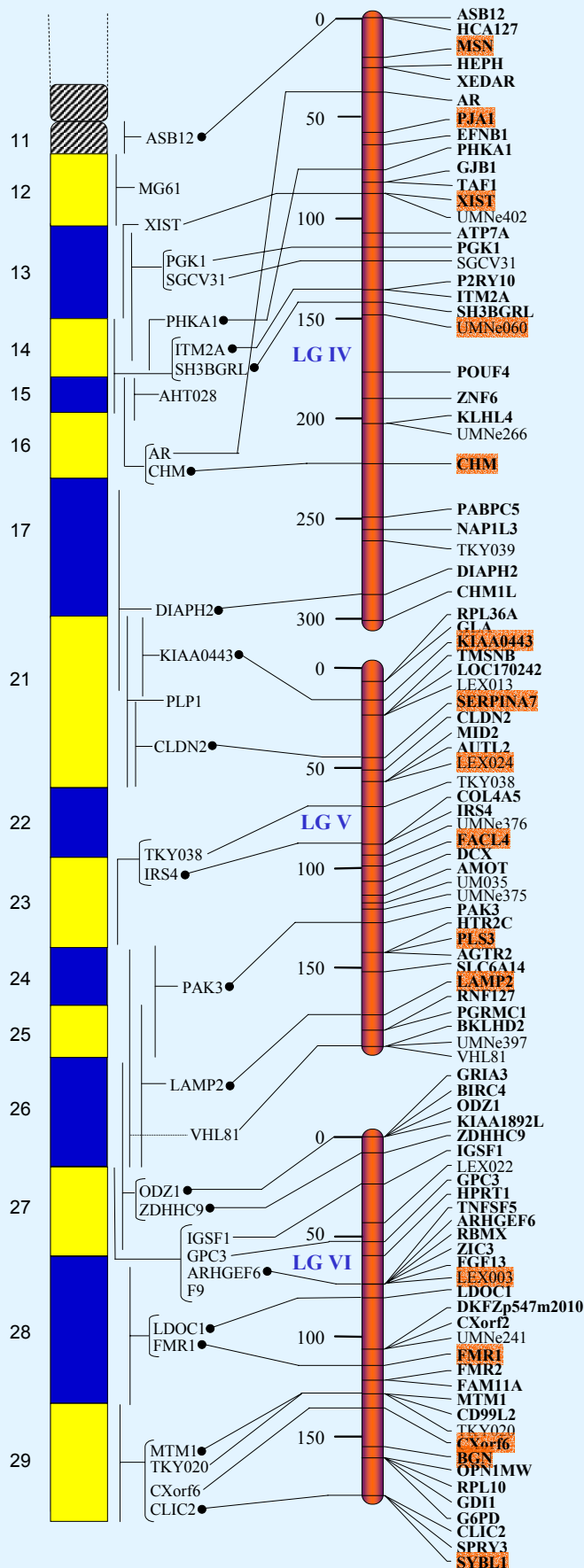
ECAXq

FISH

ECAXq RH

HSAXq

MMUX



HSAXq		MMUX	
Mbps		Mbps	
62.3	ASB12	85.1	ASB12
63.0	HCA127	85.3	HCA127
63.7	MSN	85.8	MSN
64.2	HEPH	86.1	HEPH
64.6	XEDAR	87.1	XEDAR
65.6	AR	87.9	AR
67.2	PIA1	89.3	PIA1
66.9	EFNB1	88.9	EFNB1
70.6	PHKA1	92.4	PHKA1
69.3	GJB1	91.2	GJB1
69.4	TAF1	91.4	TAF1
71.9	XIST	93.3	XIST
75.9	ATP7A	95.9	ATP7A
76.1	PGK1	96.0	PGK1
76.9	P2RY10	97.0	P2RY10
77.3	ITM2A	97.3	ITM2A
79.2	SH3BGRL	99.0	SH3BGRL
81.5	POUF4	100.8	POUF4
83.2	ZNF6	102.3	ZNF6
85.5	KLHL4	104.2	KLHL4
83.8	CHM	102.8	CHM
89.4	PABPC5	109.6	PABPC5
91.6	NAP1L3	112.0	NAP1L3
94.7	DIAPH2	118.1	DIAPH2
98.6	CHM1L	122.3	CHM1L
99.4	RPL36A	--	RPL36A
99.4	GLA	123.0	GLA
100.6	KIAA0443	124.3	KIAA0443
100.5	TMSNB	--	TMSNB
101.8	PLP1	118.6	PLP1
101.9	LOC170242	--	LOC170242
104.0	SERPINA7	--	SERPINA7
104.9	CLDN2	128.1	CLDN2
105.8	MID2	129.1	MID2
106.1	AUTL2	129.3	AUTL2
106.5	COL4A5	129.7	COL4A5
106.7	IRS4	129.9	IRS4
107.6	FACL4	130.5	FACL4
109.3	DCX	132.1	DCX
110.7	AMOT	133.7	AMOT
109.1	PAK3	131.7	PAK3
112.5	HTR2C	135.4	HTR2C
113.6	PLS3	65.5	PLS3
114.0	AGTR2	20.0	AGTR2
114.3	SLC6A14	20.2	SLC6A14
118.3	LAMP2	29.5	LAMP2
116.8	RNF127	27.6	RNF127
117.1	PGRMC1	27.9	PGRMC1
115.7	BKLHD2	21.8	BKLHD2
121.0	GRIA3	32.7	GRIA3
121.7	BIRC4	33.4	BIRC4
122.2	ODZ1	33.8	ODZ1
124.3	KIAA1892L	36.1	KIAA1892L
127.6	ZDHC9	39.4	ZDHC9
129.1	IGSF1	41.1	IGSF1
131.3	GPC3	43.5	GPC3
132.2	HPRT1	--	HPRT1
134.4	TNFSF5	46.8	TNFSF5
134.4	ARHGEF6	46.8	ARHGEF6
134.6	RBMX	47.0	RBMX
135.3	ZIC3	47.6	ZIC3
136.6	FGF13	48.7	FGF13
137.3	F9	49.6	F9
138.9	LDOC1	--	LDOC1
141.4	DKFZp547m2010	--	DKFZp547...
143.5	CXorf2	--	CXorf2
145.6	FMR1	58.2	FMR1
146.2	FMR2	59.2	FMR2
147.3	FAM11A	60.0	FAM11A
148.4	MTM1	60.8	MTM1
148.5	CD99L2	61.0	CD99L2
148.2	CXorf6	--	CXorf6
151.2	BGN	63.0	BGN
151.9	OPN1MW	63.7	OPN1MW
152.0	RPL10	63.8	RPL10
152.1	GDI1	63.9	GDI1
152.2	G6PD	64.0	G6PD
152.9	CLIC2	--	CLIC2
153.4	SPRY3	--	SPRY3
153.5	SYBL1	~75.1	SYBL1

