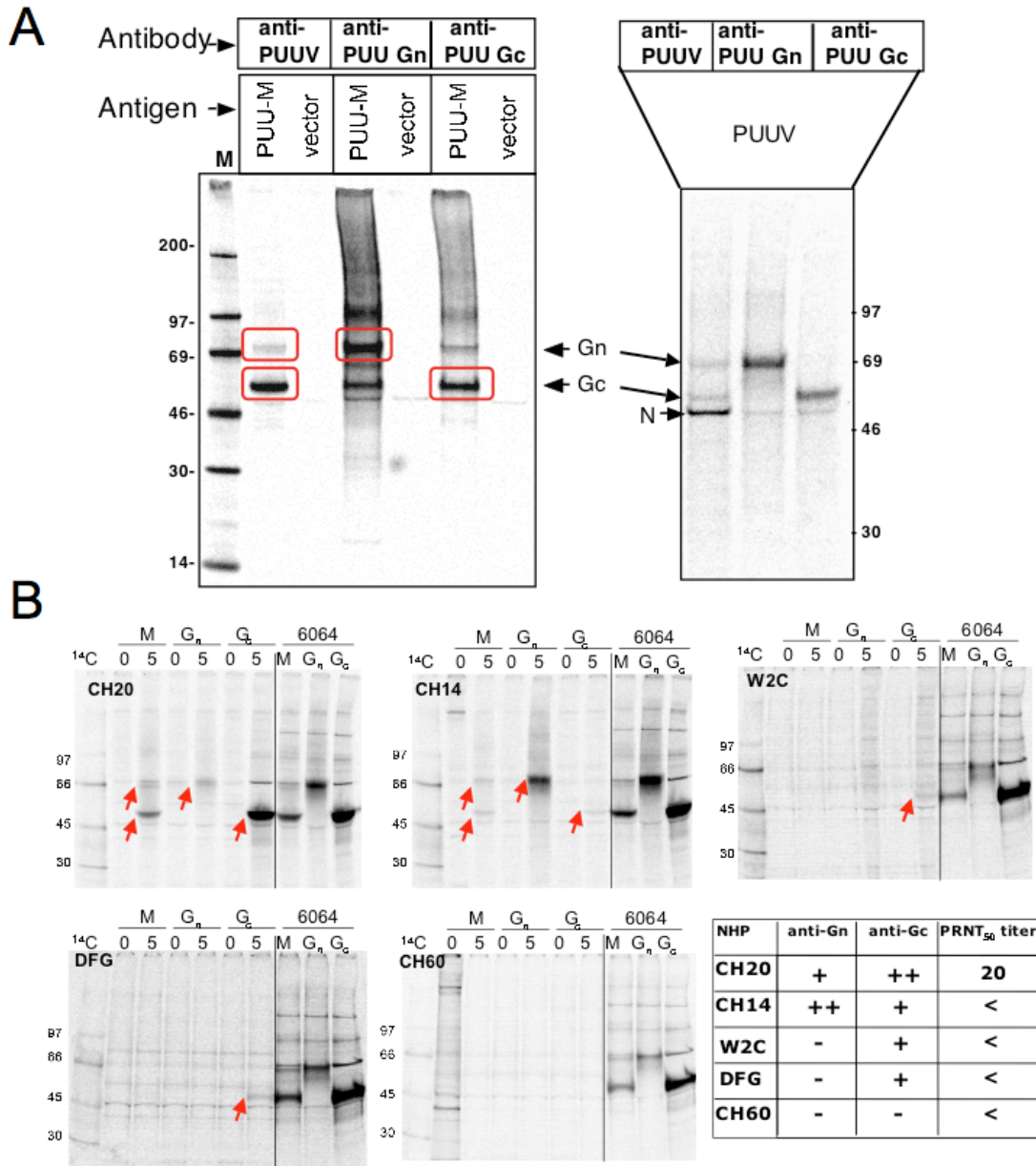


Supplemental Figure S1



**Suppl. Fig. 1. Pre-synthetic PUUV full-length M gene-based DNA vaccine.** A) Expression of PUUV Gn and Gc. The pWRG/PUU-M(x22), pWRG/PUU-Gn, pWRG/PUU-Gc plasmids or empty vector was used to transfect COS cells and the expressed proteins were detected by RIPA. Alternatively, cells were infected with PUUV, strain K27, to serve as positive controls. The antibodies used to detect the viral proteins were anti-PUUV polyclonal rabbit sera (anti-PUUV), anti-Gn rabbit sera (anti-PUU Gn), or anti-Gc rabbit sera (anti-PUU Gc). The position of Gn and Gc are shown with arrows and red boxes. In the case of PUUV infected cells, the N protein is also detected. B) Antibody responses in macaques receiving 5 vaccinations with pWRG/PUU-M(x22). Each gel represents RIPA results for a specific NHP (ID# CH20, CH14, W2C, DFG, CH60) with #6064 sera as a positive control. The table represents a summary of the RIPA and PRNT data, + indicates expression detected, ++ indicates a higher level of expression detected, < indicates PRNT50 titer <20.