

1  
2  
3  
4  
5  
6  
7  
8  
9  
10  
11  
12  
13  
14  
15  
16  
17  
18  
19  
20  
21  
22  
23  
24  
25  
26

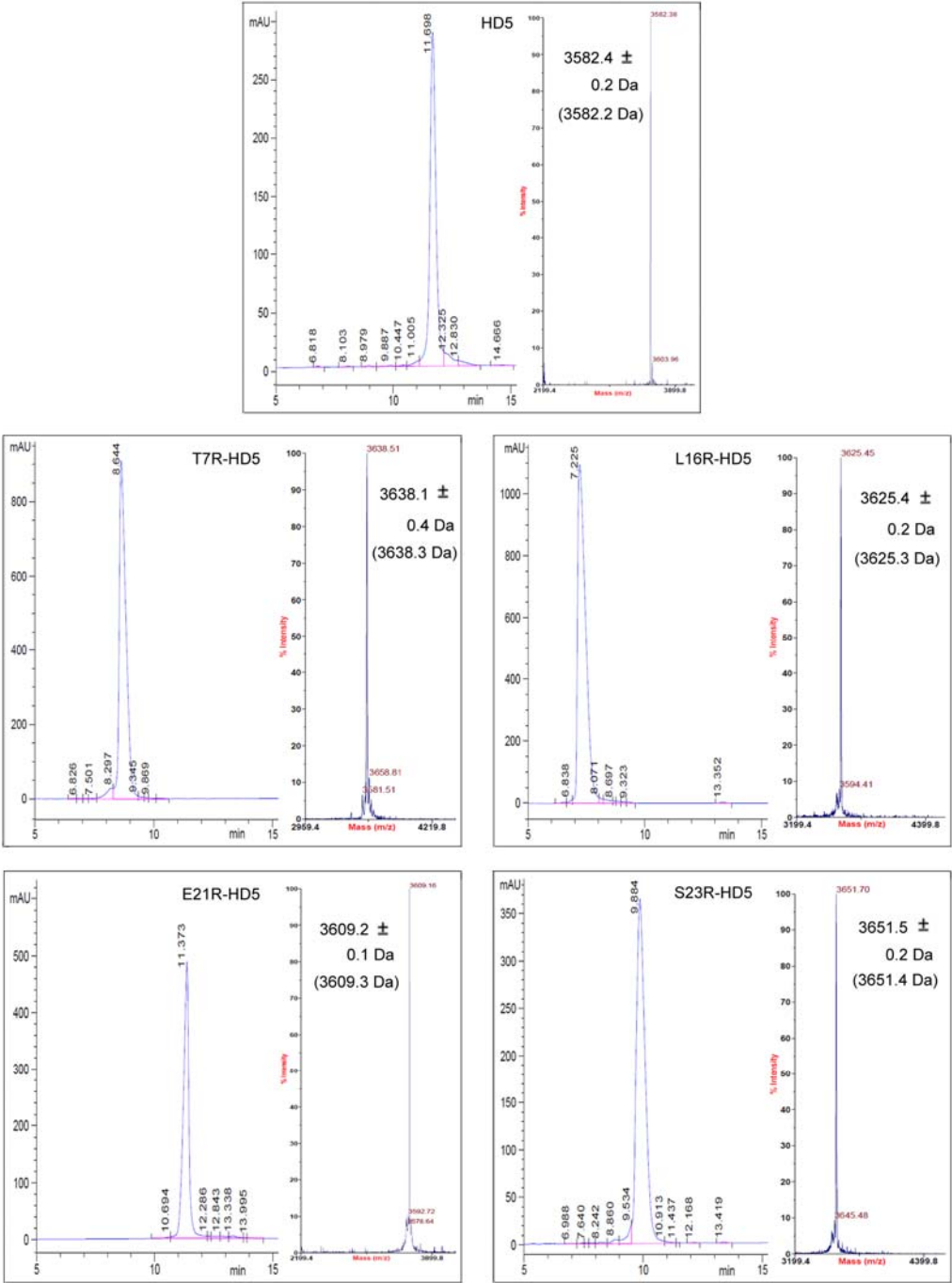


FIG S1 The five synthetic HD5 analogs analyzed by RP-HPLC and ESI-MS. The chromatographic data were obtained at 40°C on a C18 column (5 μm, 4.6×150 mm) applying a linear gradient of 10-60% buffer B (buffer A: water plus 0.1% trifluoroacetic acid; buffer B: acetonitrile plus 0.1% trifluoroacetic acid) at a flow rate of 1 ml/min over 30 min. The mass spectrometric data were acquired on an ESI-MS (Chiron Mimotopes, Victoria, Australia). The theoretic molecular masses in *parentheses* were calculated based on the average isotopic compositions of folded peptides.