

Supplemental Material to:

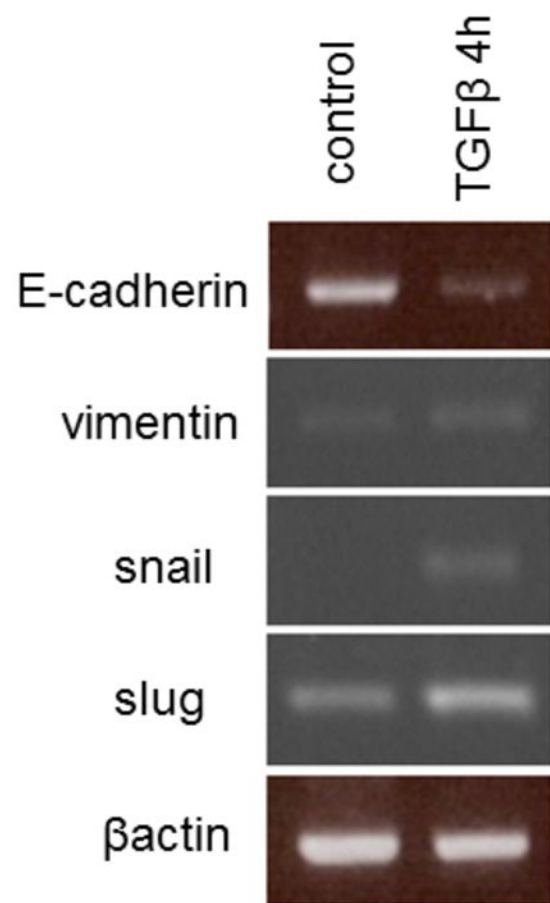
**Yoshimichi Tanaka, Yoshito Terai, Hiroshi Kawaguchi,
Satoe Fujiwara, Saha Yoo, Satoshi Tsunetoh, et al.**

**Prognostic impact of EMT (epithelial-mesenchymal-
transition)-related protein expression
in endometrial cancer**

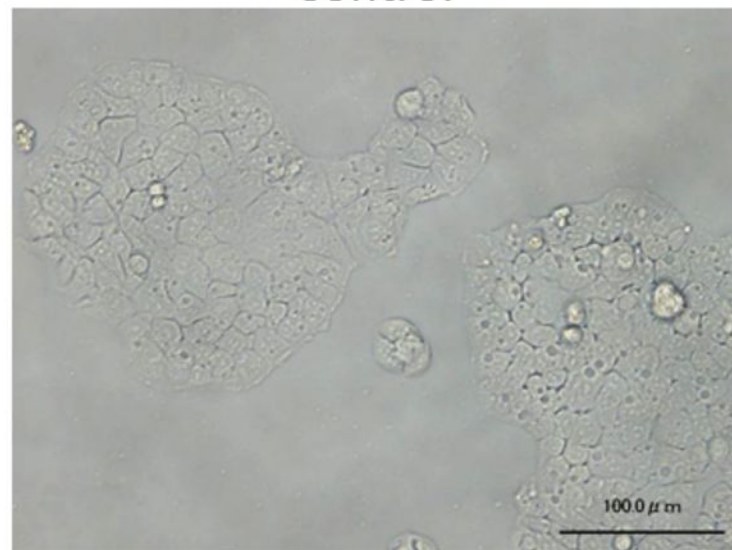
**Cancer Biology & Therapy 2012; 14(1)
<http://dx.doi.org/10.4161/cbt.22625>**

<http://www.landesbioscience.com/journals/cbt/article/22625/>

Figure s1



Control



TGF β 48hr

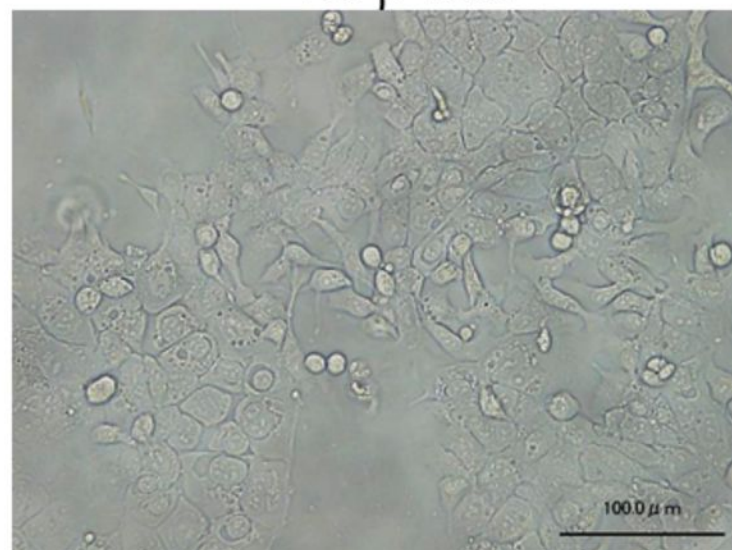
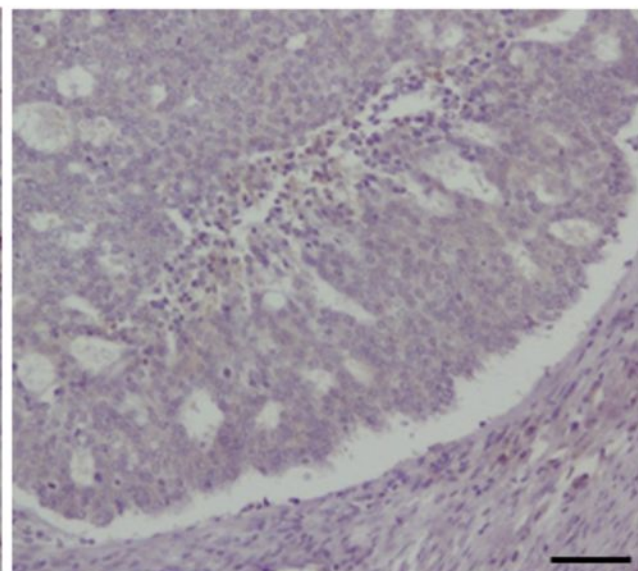
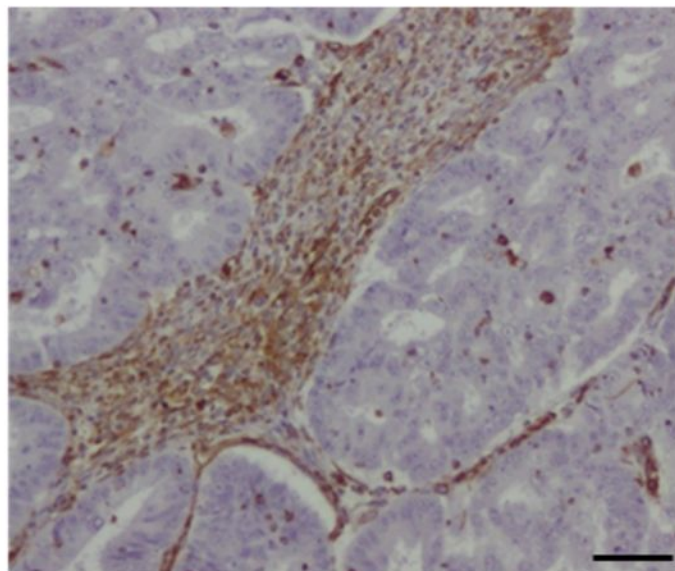


Figure s2

Vimentin

TWIST

Endometrioid
negative



Endometrioid
positive

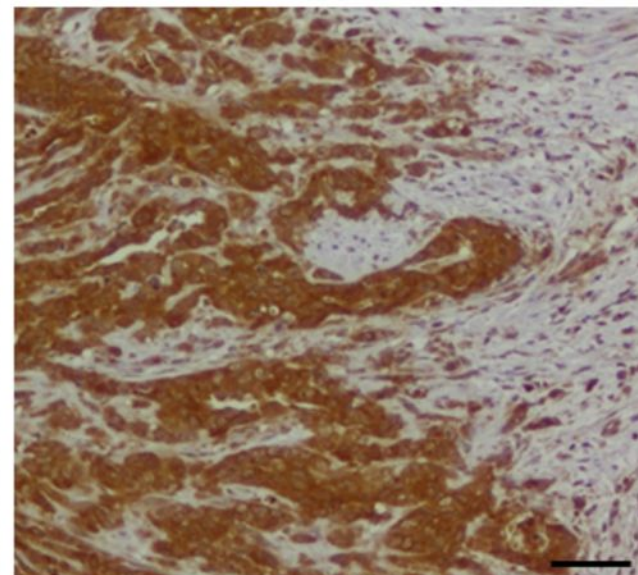
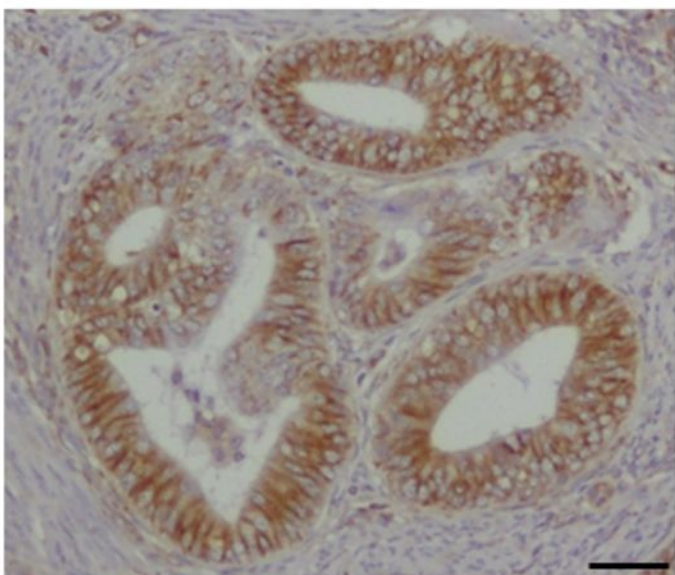


Table s1. Results of immunohistochemistry

	Vimentin			TWIST		
	negative(%)	positive(%)	P-value	negative(%)	positive(%)	P-value
Age			0.2626			0.8921
< 50	40(58.8)	28(41.2)		40(58.8)	28(41.2)	
≥ 50	189(66.1)	97(33.9)		165(57.7)	121(42.3)	
BMI			0.1855			0.2745
< 30	203(63.4)	117(36.6)		182(56.9)	138(43.1)	
≥ 30	26(76.4)	8(23.6)		23(67.6)	11(32.4)	
Histology			<0.0001			0.0018
AEH	4(23.5)	13(76.5)		13(76.5)	4(23.5)	
endometrioid G1	106(66.7)	53(33.3)		101(63.5)	58(36.5)	
endometrioid G2	37(75.5)	12(24.5)		31(63.3)	18(36.7)	
endometrioid G3	36(81.8)	8(18.2)		23(52.3)	21(47.7)	
adenocarcinoma	6(33.3)	12(66.7)		4(22.2)	14(77.8)	
serous	16(88.9)	2(10.2)		8(44.4)	10(55.6)	
clear	10(100.0)	0(0.0)		3(30.0)	7(70.0)	
carcinosarcoma	0(0.0)	22(100.0)		9(40.9)	13(59.1)	
others	14(82.4)	3(17.6)		13(76.5)	4(23.5)	
FIGO stage			0.0033			0.0130
0	4(23.5)	13(76.5)		13(76.5)	4(23.5)	
I	153(69.5)	67(30.5)		136(61.8)	84(38.2)	
II	14(66.7)	7(33.3)		13(61.9)	8(38.1)	
III	44(59.5)	30(40.5)		36(48.6)	38(51.4)	
IV	14(63.6)	8(36.4)		7(31.8)	15(68.2)	
Myometrial invasion			0.5456			0.0998
< 50%	163(65.7)	85(34.3)		151(60.9)	97(39.1)	
≥ 50%	66(62.3)	40(37.7)		54(50.9)	52(49.1)	
Peritoneal cytology			0.8757			0.0063
positive	33(63.5)	19(36.5)		21(40.4)	31(59.6)	
negative	196(64.9)	106(35.1)		184(60.9)	118(39.1)	
Lymph node metastasis			0.8507			0.5857
positive	23(67.6)	11(32.4)		18(52.9)	16(47.1)	

negative	206(64.4)	114(35.6)	187(58.4)	133(41.6)
----------	-----------	-----------	-----------	-----------
