

Fig. S1 Phylogenetic tree of CSF and blood derived HIV-1 *tat*.

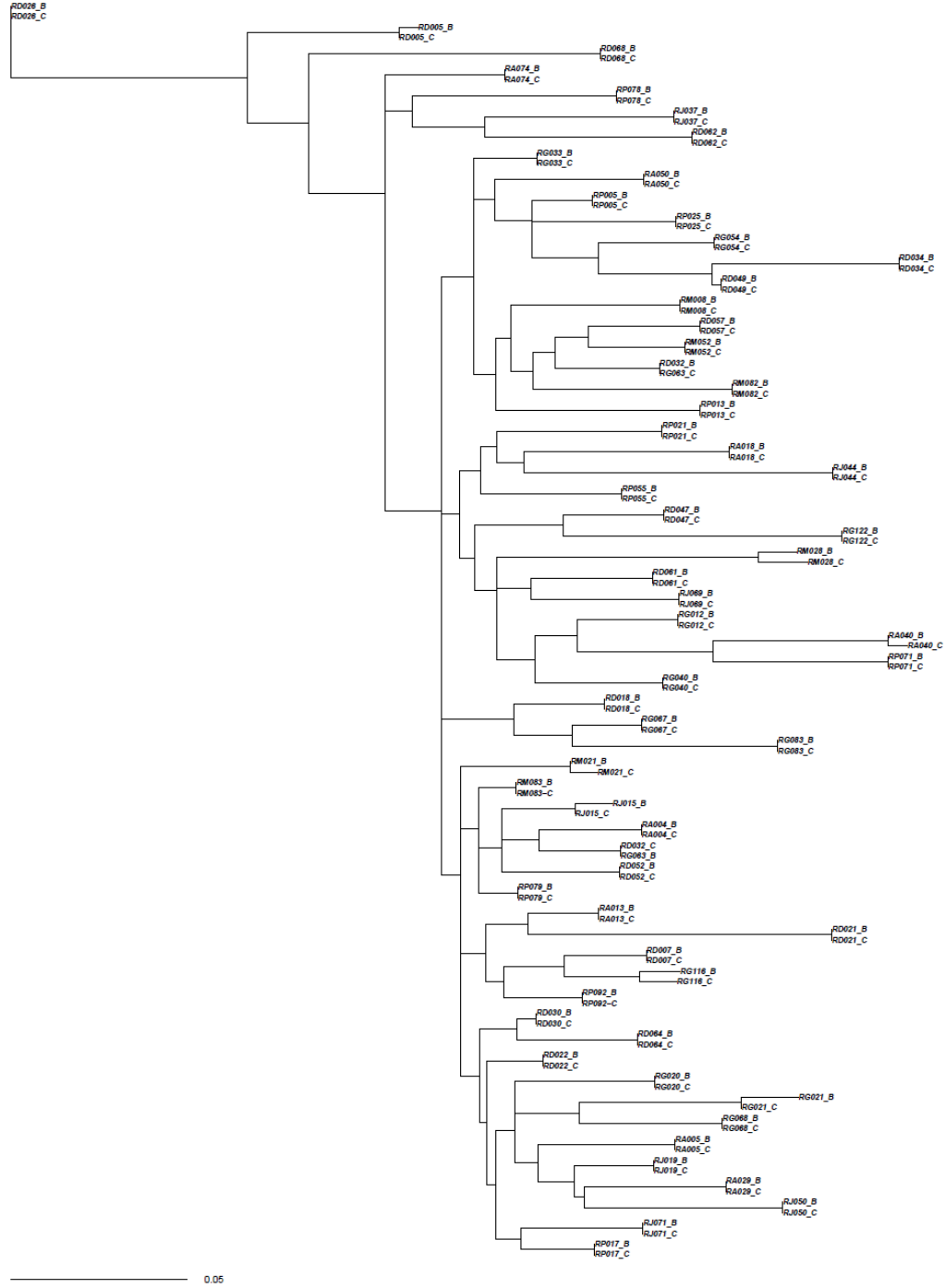
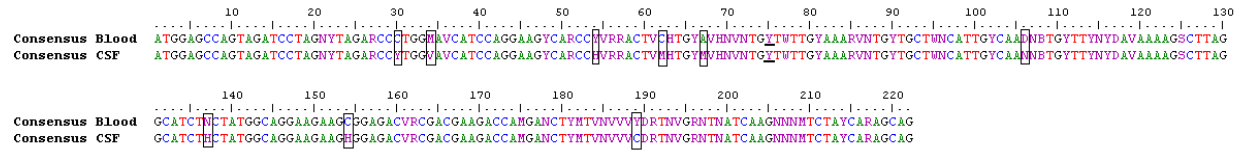


Fig. S2 Consensus *tat* sequences of CSF and blood.



Legend: Letters represent standard nucleotide codes. Characters with box represent positions different between CSF and blood. Underlined position represents the synonymous mutation found to characterize the signature difference between blood and CSF viruses.