

Figure S5

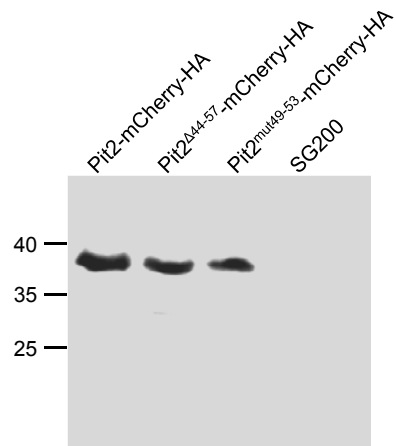


Figure S5: Western Blot analysis to test stability of mCherry-HA tagged Pit2-fusion-proteins expressed by *U. maydis* during plant infection. Protein extracts of *U. maydis* infected maize leaves were probed using anti-HA-antibodies. Expected sizes for Pit2-mCherry-HA: 38.8kDa, Pit2 Δ 44-57-mCherry-HA: 37kDa, Pit2^{mut49-53}-mCherry-HA: 38.4kDa. No signal was detected in samples from maize leaves that were infected with the *U. maydis* wild type strain SG200.