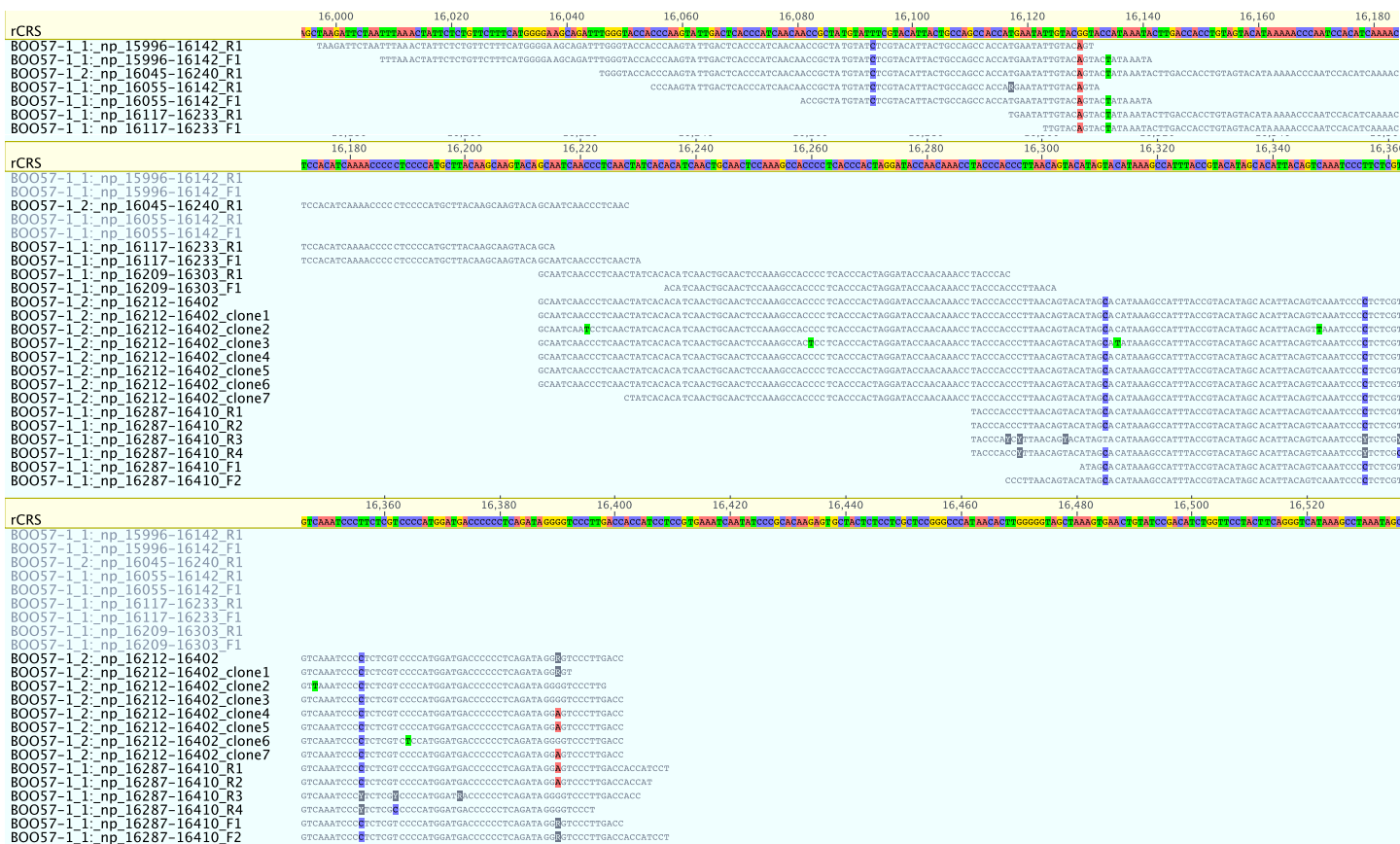


rCRS	16,000	16,020	16,040	16,060	16,080	16,100	16,120	16,140	16,160	16,1	
UZ0077_1_np_16055-16142_R1	AGC	AAG	ATC	AA	AA	ATC	CT	CT	CT	CT	CT
UZ0077_1_np_16055-16142_F1											
UZ0077_1_np_16055-16142_F2											
UZ0077_1_np_16055-16142_F3											
UZ0077_2_np_15996-16142_R1											
UZ0077_2_np_15996-16142_clone1r											
UZ0077_2_np_15996-16142_clone2r											
UZ0077_2_np_15996-16142_clone3r											
UZ0077_2_np_15996-16142_clone4r											
UZ0077_2_np_15996-16142_clone5r											
UZ0077_2_np_15996-16142_clone6r											
UZ0077_1_np_16117-16218_R1											
UZ0077_1_np_16117-16218_F1											
UZ0077_1_np_16117-16218_F2											
UZ0077_1_np_16117-16218_F3											
UZ0077_1_np_16117-16218_F4											
UZ0077_2_np_16117-16233_R1											
UZ0077_2_np_16117-16233_clone1r											
UZ0077_2_np_16117-16233_clone2r											
UZ0077_2_np_16117-16233_clone3r											
UZ0077_2_np_16117-16233_clone4r											
UZ0077_2_np_16117-16233_F1											
UZ0077_2_np_16117-16233_clone1_2											
UZ0077_2_np_16117-16233_clone3											
UZ0077_2_np_16117-16233_clone4											
UZ0077_2_np_16117-16233_clone5											
UZ0077_1_np_16117-16218_R1	CATCAAAACCCC										
UZ0077_1_np_16117-16218_R2	CATCAAAACCCC										
UZ0077_1_np_16117-16218_F1	CATCAAAACCCC										
UZ0077_1_np_16117-16218_F2	CATCAAAACCCC										
UZ0077_1_np_16117-16218_F3	CATCAAAACCCC										
UZ0077_1_np_16117-16218_F4	CATCAAAACCCC										
UZ0077_2_np_16117-16233_R1	CATCAAAACCCC										
UZ0077_2_np_16117-16233_clone1r	CATCAAAACCCC										
UZ0077_2_np_16117-16233_clone2r	CATCAAAACCCC										
UZ0077_2_np_16117-16233_clone3r	CATCAAAACCCC										
UZ0077_2_np_16117-16233_clone4r	CATCAAAACCCC										
UZ0077_2_np_16117-16233_F1	CATCAAAACCCC										
UZ0077_2_np_16117-16233_clone1_2	CATCAAAACCCC										
UZ0077_2_np_16117-16233_clone3	CATCAAAACCCC										
UZ0077_2_np_16117-16233_clone4	CATCAAAACCCC										
UZ0077_2_np_16117-16233_clone5	CATCAAAACCCC										
UZ0077_1_np_16209-16303_F1											
UZ0077_1_np_16209-16303_F2											
UZ0077_2_np_16209-16348_R1											
UZ0077_2_np_16209-16348_clone1r											
UZ0077_2_np_16209-16348_clone2r											
UZ0077_2_np_16209-16348_clone3r											
UZ0077_2_np_16209-16348_clone4r											
UZ0077_2_np_16209-16348_clone5r											
UZ0077_2_np_16209-16348_F1											
UZ0077_2_np_16209-16348_clone1											
UZ0077_2_np_16209-16348_clone2											
UZ0077_2_np_16209-16348_clone3											
UZ0077_2_np_16209-16348_clone4											
UZ0077_2_np_16209-16348_clone5											
UZ0077_2_np_16209-16348_clone6											
UZ0077_1_np_16287-16410_R1											
UZ0077_1_np_16287-16410_R2											
UZ0077_1_np_16287-16410_R3											
UZ0077_1_np_16287-16410_F1											
UZ0077_1_np_16287-16410_F2											
UZ0077_2_np_16287-16410_F3											
UZ0077_2_np_16287-16410_R1											
UZ0077_2_np_16287-16410_clone1r											
UZ0077_2_np_16287-16410_clone2r											
UZ0077_2_np_16287-16410_clone3r											
UZ0077_2_np_16287-16410_F1											
UZ0077_2_np_16287-16410_clone1											
UZ0077_2_np_16287-16410_clone2											
UZ0077_2_np_16287-16410_clone3											
UZ0077_2_np_16287-16410_clone4											
rCRS	16,360	16,380	16,400	16,420	16,440	16,460	16,480	16,500	16,520		
UZ0077_1_np_16287-16410_R1	AAATCCCTTC	CCCATGGATGACCC	CCCTCAGATAGGGG	CTTGACACC							
UZ0077_1_np_16287-16410_R2	AAATCCCTTC	CCCATGGATGACCC	CCCTCAGATAGGGG	CTTGACACC							
UZ0077_1_np_16287-16410_R3	AAATCCCTTC	CCCATGGATGACCC	CCCTCAGATAGGGG	CTTGACACC							
UZ0077_1_np_16287-16410_F1	AAATCCCTTC	CCCATGGATGACCC	CCCTCAGATAGGGG	CTTGACACC							
UZ0077_1_np_16287-16410_F2	AAATCCCTTC	CCCATGGATGACCC	CCCTCAGATAGGGG	CTTGACACC							
UZ0077_1_np_16287-16410_F3	AAATCCCTTC	CCCATGGATGACCC	CCCTCAGATAGGGG	CTTGACACC							
UZ0077_2_np_16287-16410_R1	AAATCCCTTC	CCCATGGATGACCC	CCCTCAGATAGGGG	CTTGACACC							
UZ0077_2_np_16287-16410_clone1r	AAATCCCTTC	CCCATGGATGACCC	CCCTCAGATAGGGG	CTTGACACC							
UZ0077_2_np_16287-16410_clone2r	AAATCCCTTC	CCCATGGATGACCC	CCCTCAGATAGGGG	CTTGACACC							
UZ0077_2_np_16287-16410_clone3r	AAATCCCTTC	CCCATGGATGACCC	CCCTCAGATAGGGG	CTTGACACC							
UZ0077_2_np_16287-16410_F1	AAATCCCTTC	CCCATGGATGACCC	CCCTCAGATAGGGG	CTTGACACC							
UZ0077_2_np_16287-16410_clone1	AAATCCCTTC	CCCATGGATGACCC	CCCTCAGATAGGGG	CTTGACACC							
UZ0077_2_np_16287-16410_clone2	AAATCCCTTC	CCCATGGATGACCC	CCCTCAGATAGGGG	CTTGACACC							
UZ0077_2_np_16287-16410_clone3	AAATCCCTTC	CCCATGGATGACCC	CCCTCAGATAGGGG	CTTGACACC							
UZ0077_2_np_16287-16410_clone4	AAATCCCTTC	CCCATGGATGACCC	CCCTCAGATAGGGG	CTTGACACC							

A- Direct sequences and clone sequences for Yuzhny Oleni Ostrov individual UZ0077



## B- Direct sequences and clone sequences for Bol'shoy Oleni Ostrov individual BOO57-1



## C- Direct sequences and clone sequences for Bol'shoy Oleni Ostrov individual BOO72-1





F- Direct sequences and clone sequences for Bol'shoy Oleni Ostrov individual BOO72-15

**Figure S3. Direct and clone sequences for six selected samples.** A. UZOO77. B. BOO57-1. C. BOO72-1. D. BOO72-4. E. BOO72-7. F. BOO72-15. “\_1” after the individual identification number signifies that the sequences have been obtained after DNA extraction and sequencing from a first sample at the Australian Centre for Ancient DNA. “\_2” after the individual identification number signifies that the sequences have been obtained after DNA extraction, cloning and sequencing from a second sample at the Institute of Anthropology, Johannes Gutenberg University of Mainz.