

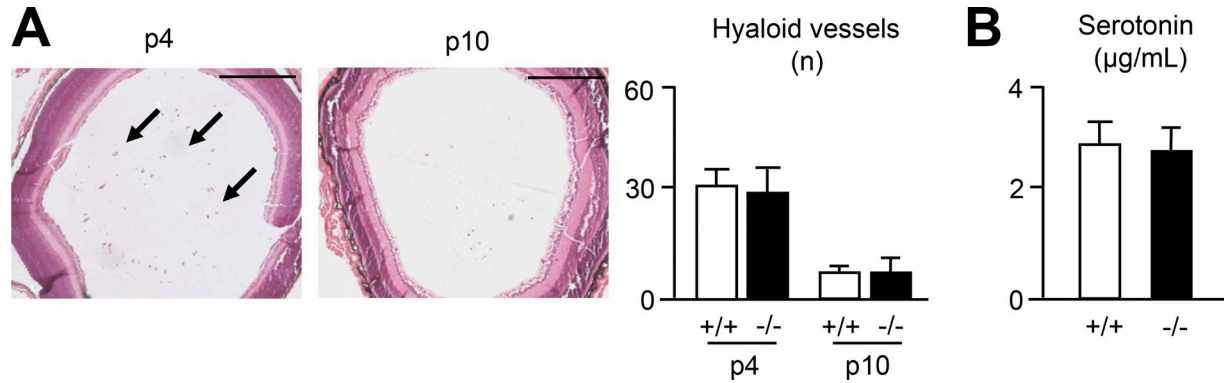
Albers et al., <http://www.jcb.org/cgi/content/full/jcb.201207142/DC1>

Figure S1. **Postnatal regression of hyaloid vessels and peripheral serotonin production are unaffected in *Fzd8*-deficient mice.** (A) Hematoxylin/eosin staining of eyeballs from 4-d-old (P4) and 10-d-old (P10) *Fzd8*-deficient mice. Quantification of hyaloid vessels is given on the right. Bars, 250 μ m. (B) Serotonin levels in the serum of 24-wk-old wild-type and *Fzd8*-deficient mice. All error bars represent mean \pm SD ($n = 6$). Asterisks indicate statistically significant differences between the two groups.

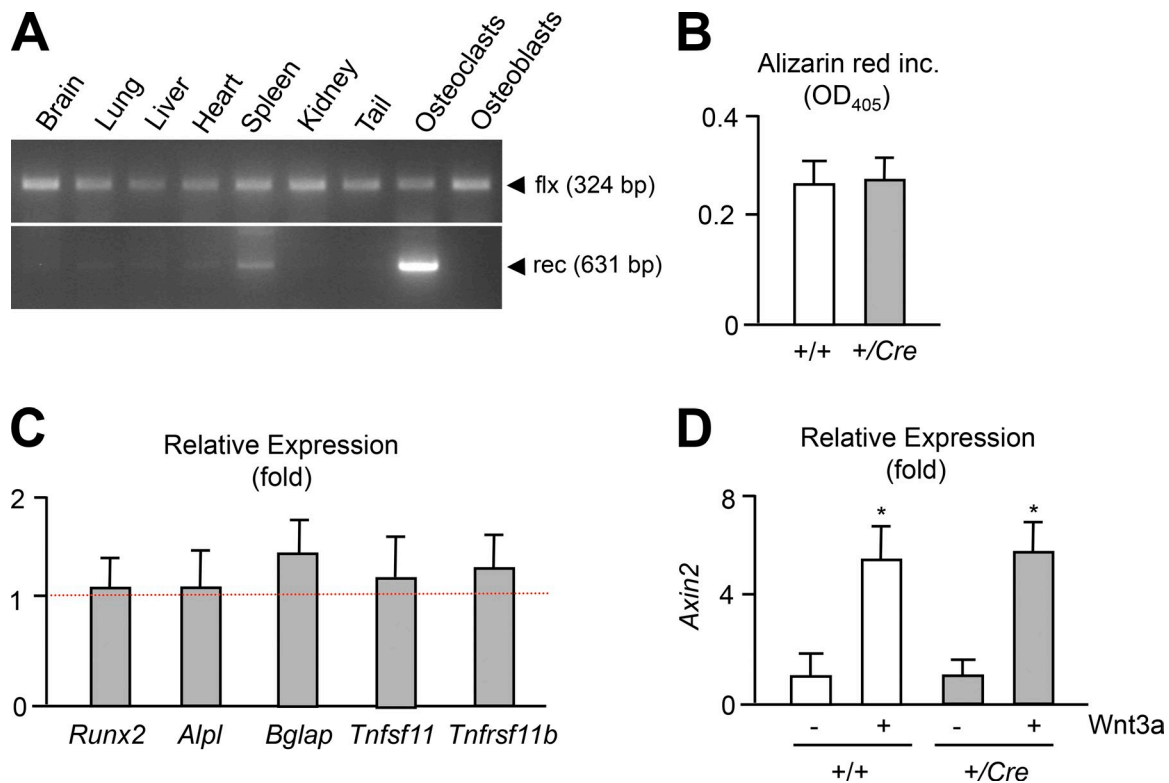


Figure S2. **β -catenin inactivation in the osteoclast lineage does not affect osteoblast differentiation and gene expression.** (A) Genomic PCR for the floxed or recombined *Catnb1* allele using DNA from various tissues, bone marrow-derived osteoclasts (day 7 of differentiation), and calvarial osteoblasts (day 15 of differentiation). (B) Quantification of alizarin red incorporation in primary osteoblasts from *Ctnnb1*^{fl/fl}/*LysM*^{+/+} and *Ctnnb1*^{fl/fl}/*LysM*^{+/cre} mice. Error bars represent mean \pm SD ($n = 4$). (C) qRT-PCR expression analysis of the indicated genes in *Ctnnb1*^{fl/fl}/*LysM*^{+/cre} osteoblasts relative to *Ctnnb1*^{fl/fl}/*LysM*^{+/+} cultures. Error bars represent mean \pm SD ($n = 4$). (D) qRT-PCR expression analysis for *Axin2* in osteoblasts after stimulation with 200 ng/ml Wnt3a for 6 h. Error bars represent mean \pm SD ($n = 4$). Asterisks indicate statistically significant differences compared with untreated controls.