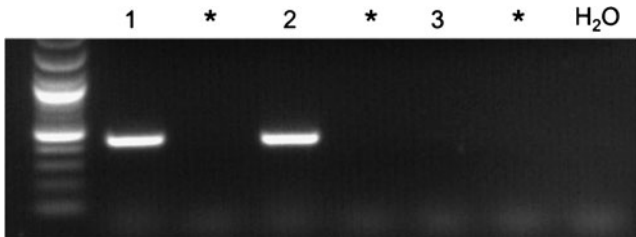


Supplementary Data



SUPPLEMENTARY FIG. S1. Reverse transcription-polymerase chain reaction analysis for GAPDH (450 bp) in human bone marrow-mesenchymal stem cells (BM-MSC) and their exosomes, treated or not with RNase A. Lane 1: hBM-MSC; lane 2: intact exosomes; lane 3: RNase A-treated exosomes. * indicates RT- samples.