

# **A comparative study of structures and structural transitions of secondary transporters with the LeuT fold**

- Online Resource -

*G. Jeschke*

Lab. Phys. Chem., ETH Zürich, Wolfgang-Pauli-Strasse 10,  
CH-8093 Zürich, Switzerland

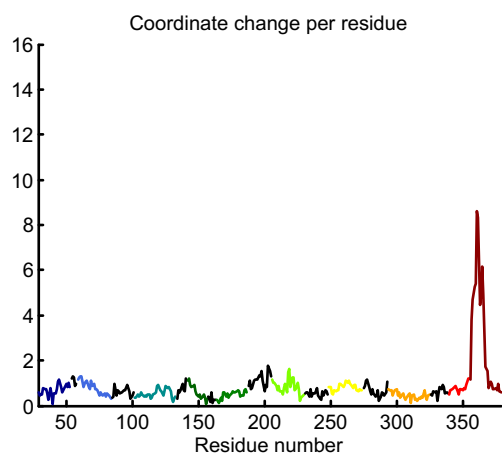
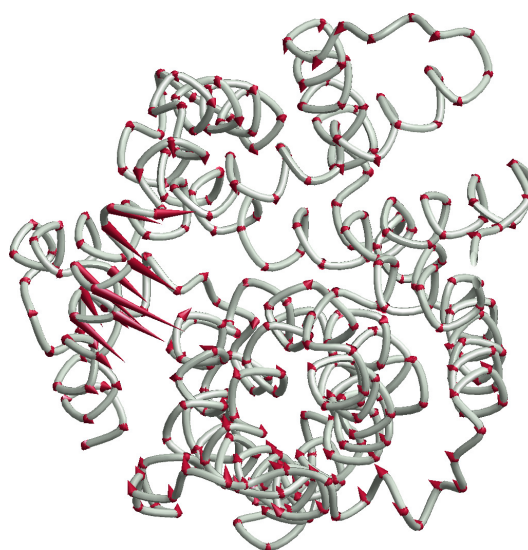
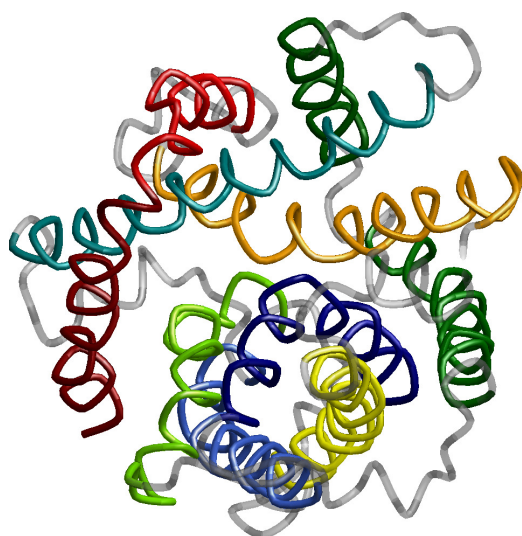
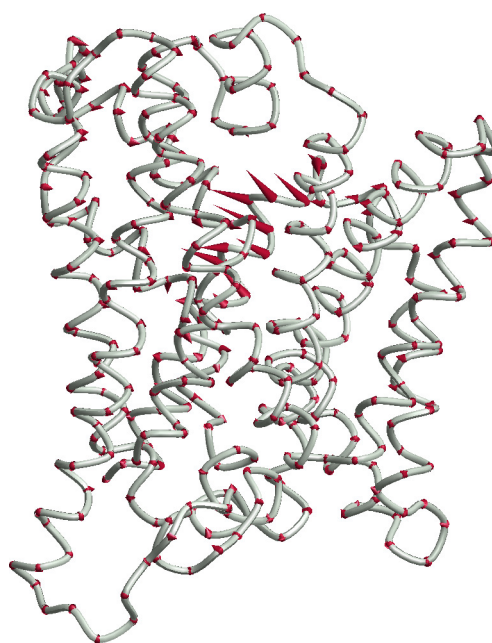
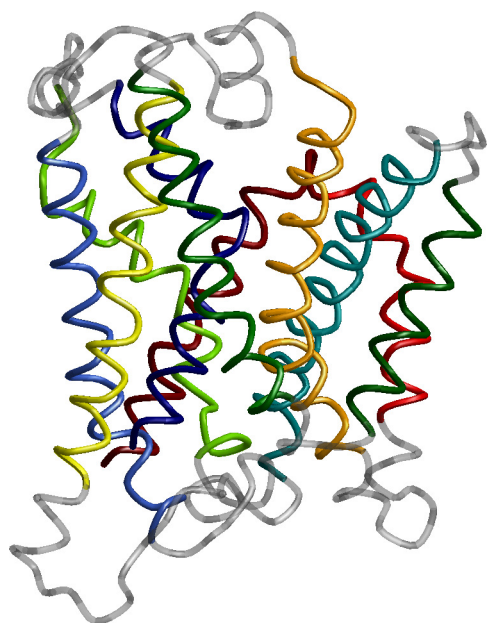
[gjeschke@ethz.ch](mailto:gjeschke@ethz.ch)

Visualization of structural transitions. Each page shows in the left column the ten-helix core with color coding as in Figure 1 of the paper with viewing directions along the lipid bilayer plane (top) and along the bilayer normal (middle). The right column visualizes the transition with the initial structure shown as a grey coil model and crimson cones pointing to C<sup>α</sup> atom coordinates in the final structure. The bottom plot in the left column shows the per residue coordinate shift of the C<sup>α</sup> atoms in units of Å.

2JLN → 2JLO

Ce → CSec

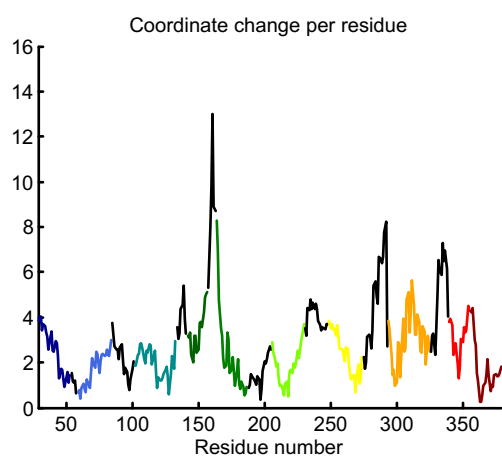
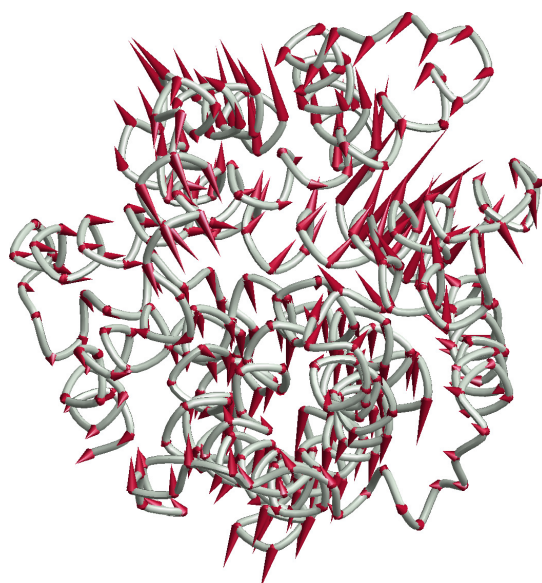
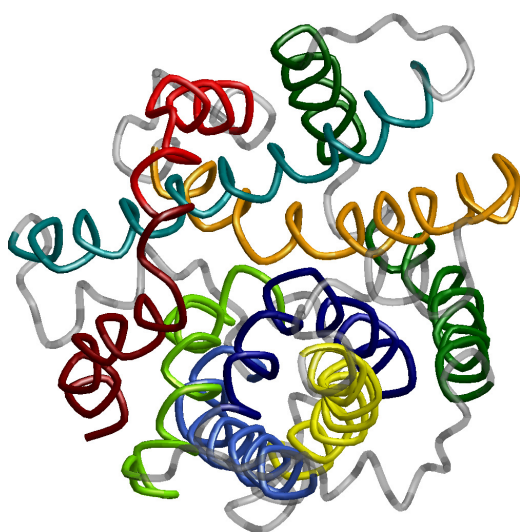
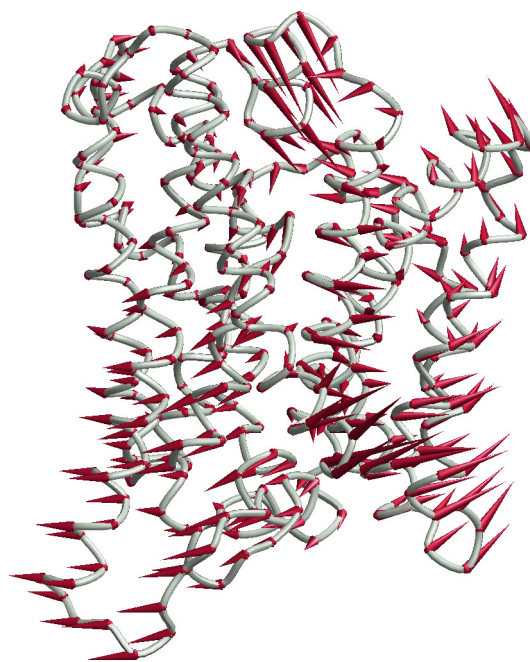
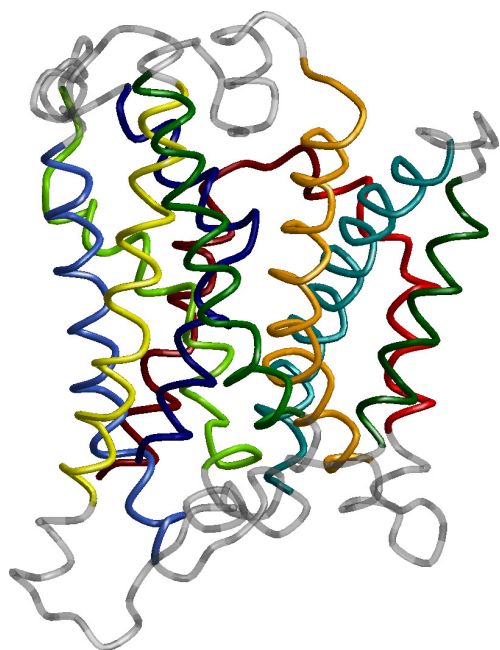
Mhp1



2JLO → 2X79

CSe → Ci

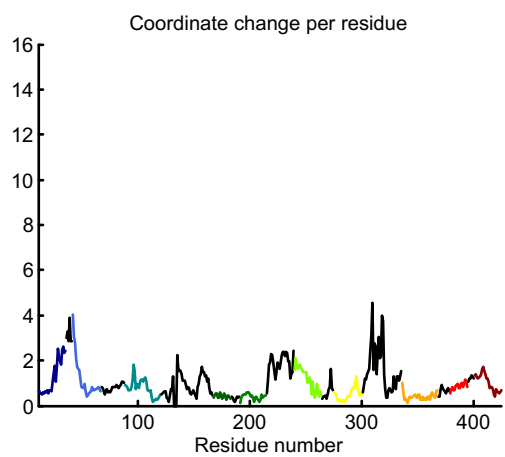
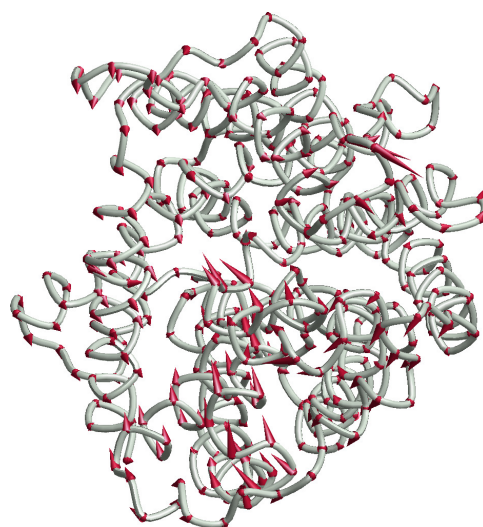
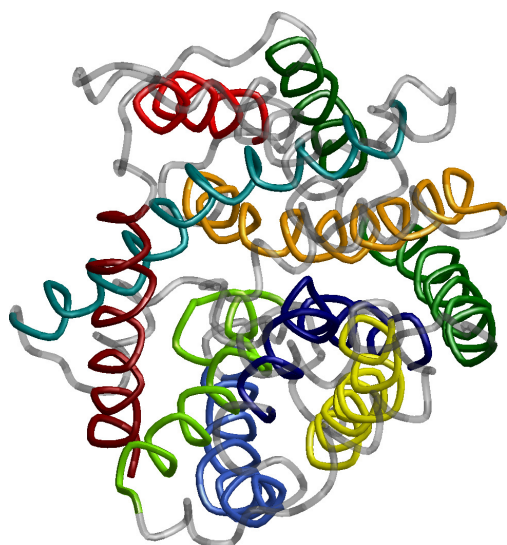
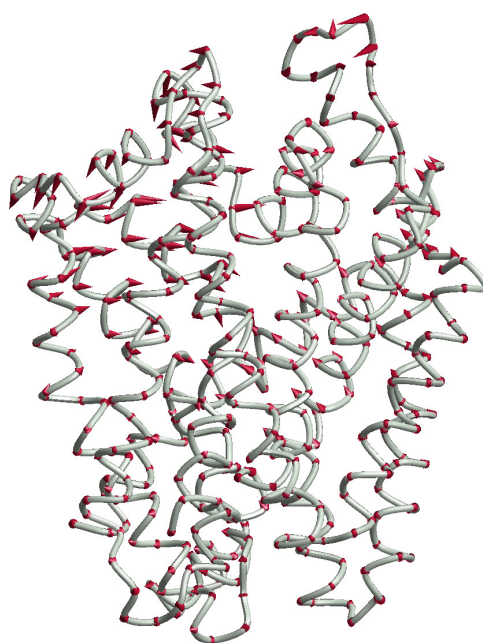
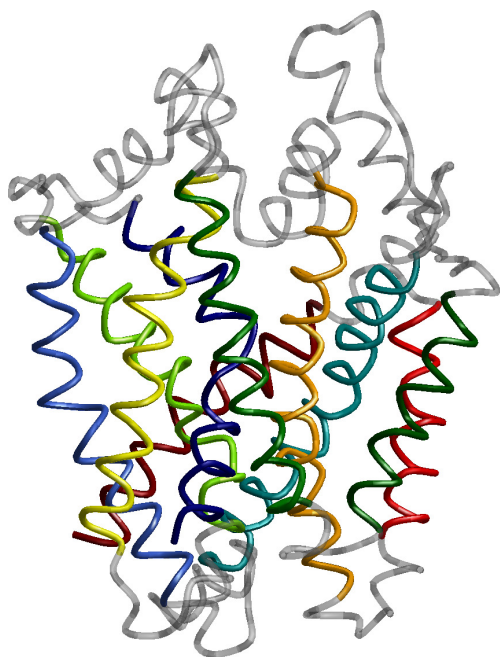
Mhp1



3F3A → 2A65

CSe → CSec

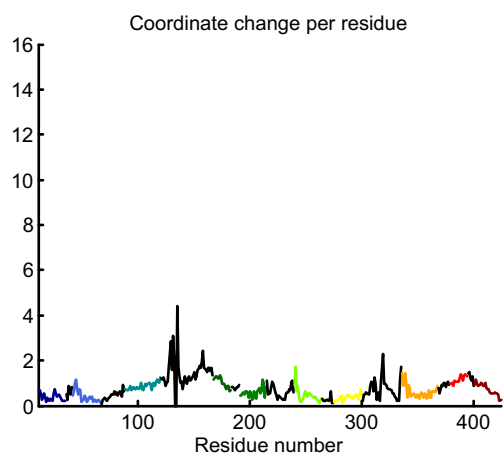
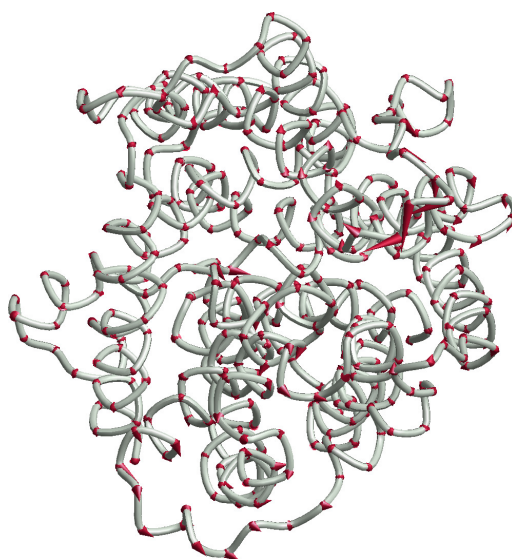
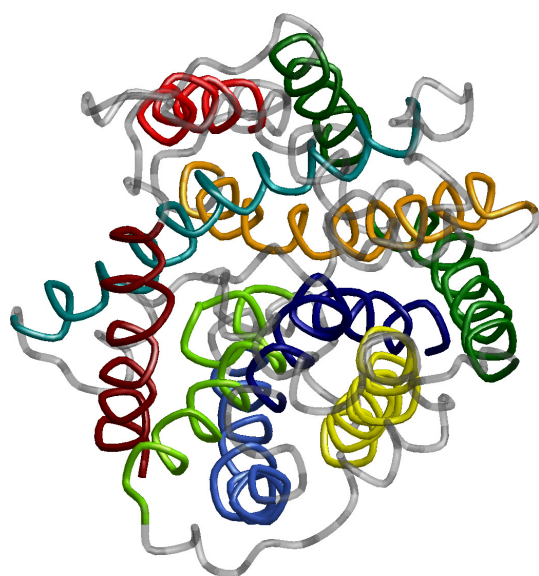
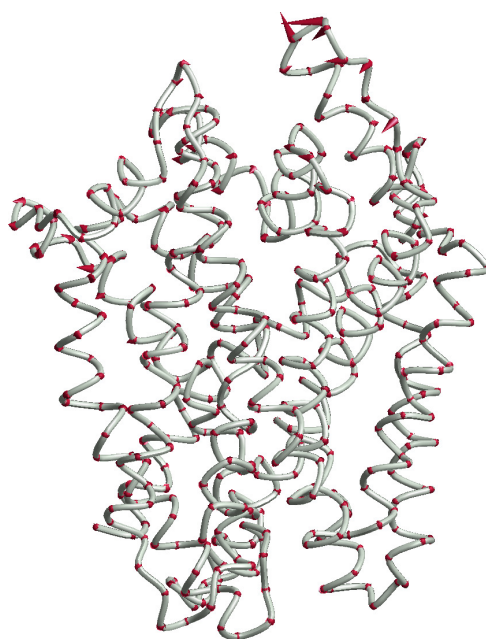
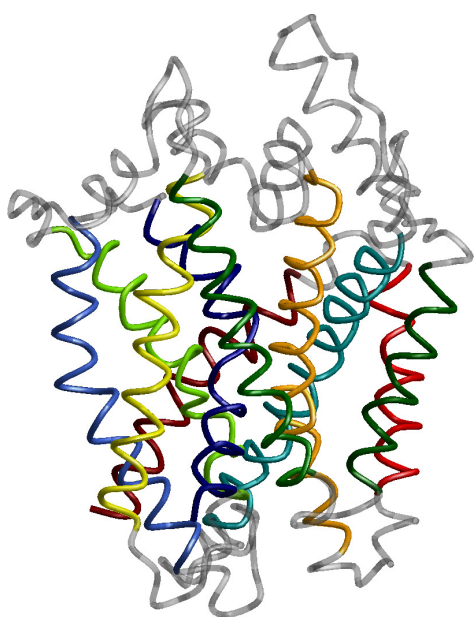
LeuT



2A65 → 3GJC

CSec → S2

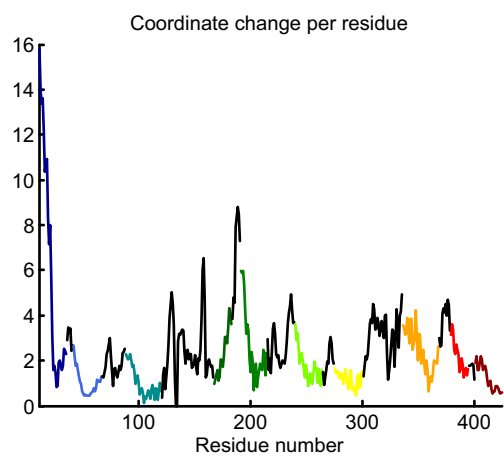
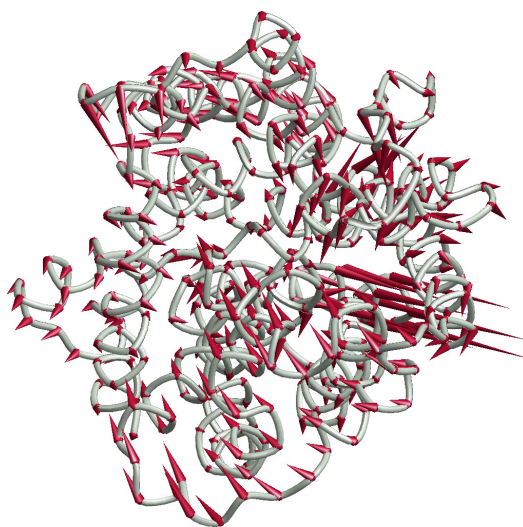
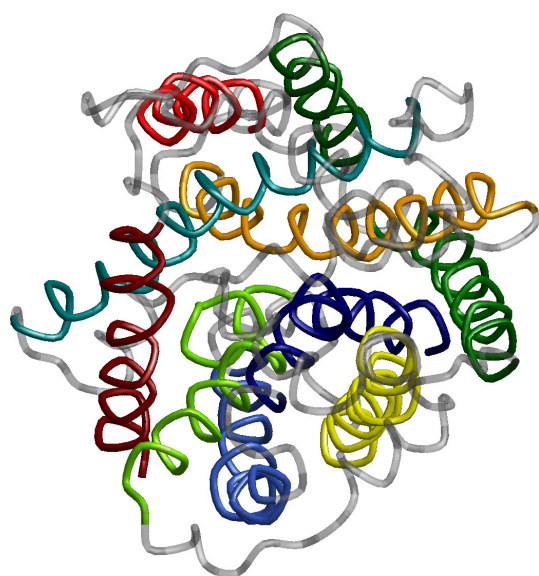
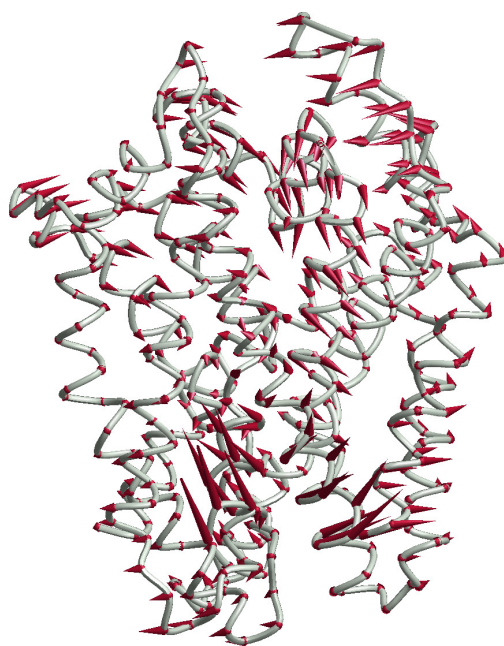
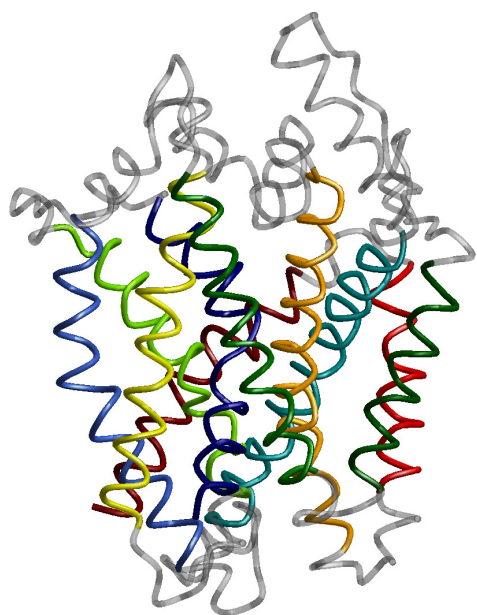
LeuT



2A65 → 3TT3

CSec → Ci

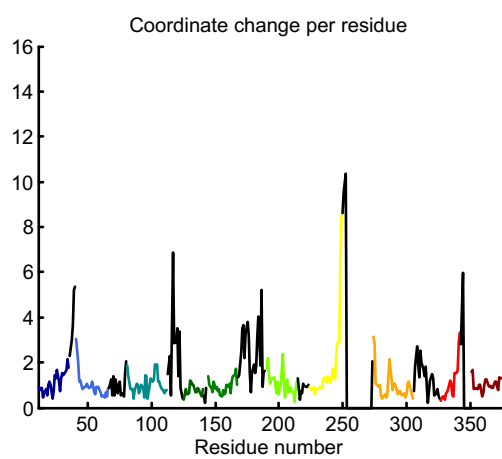
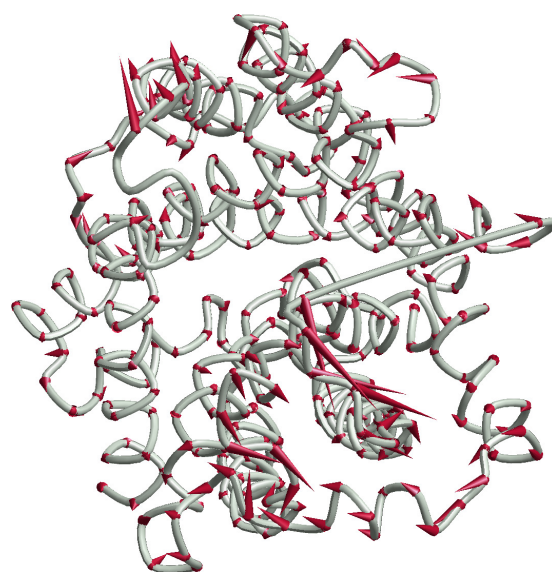
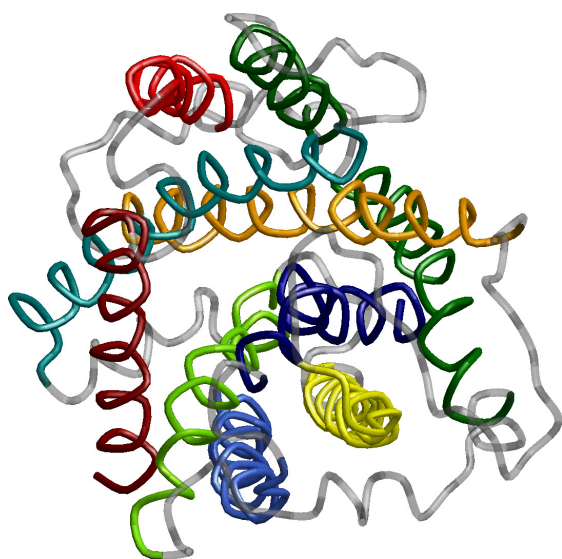
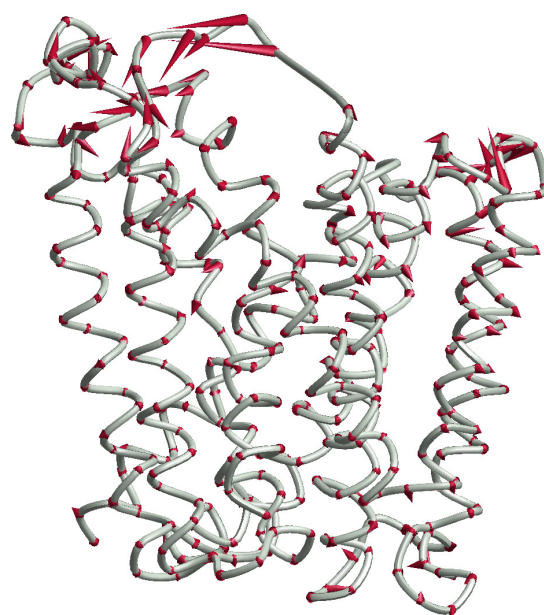
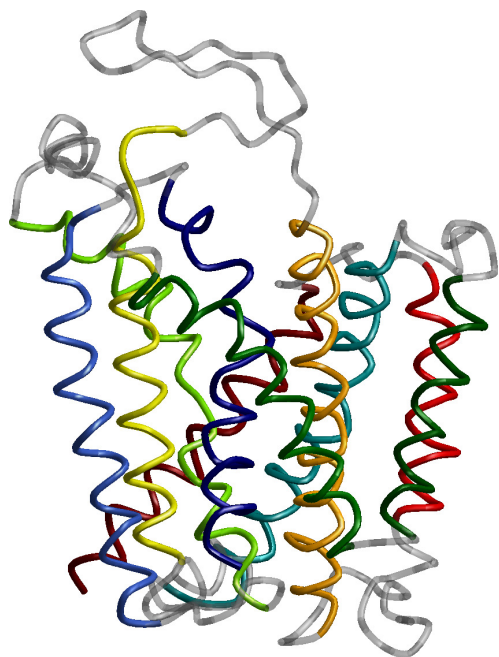
LeuT



3LRB → 3OB6

Ce → CSe

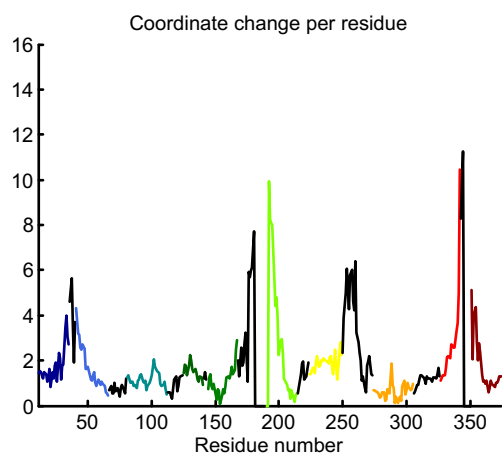
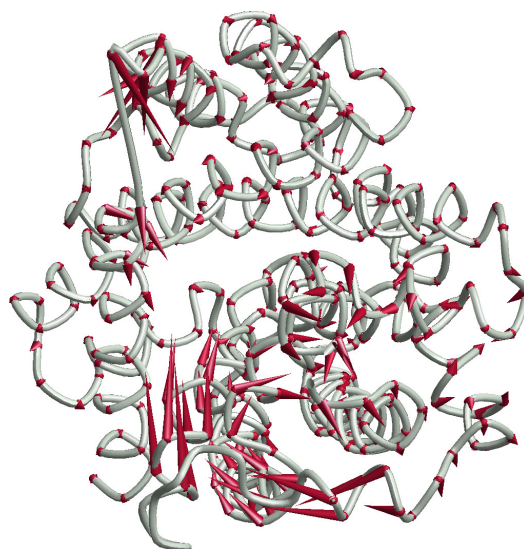
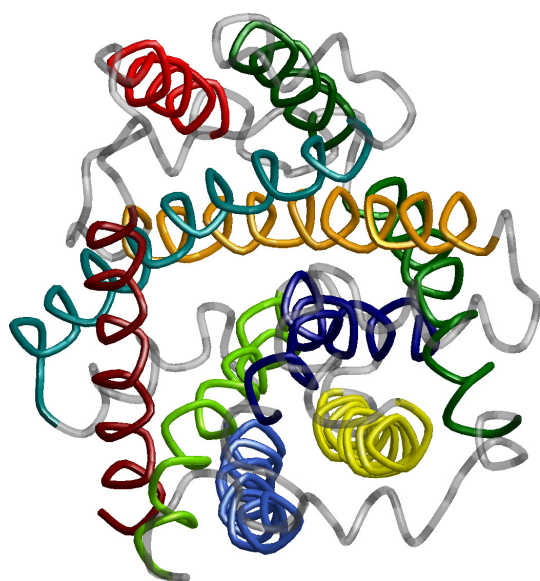
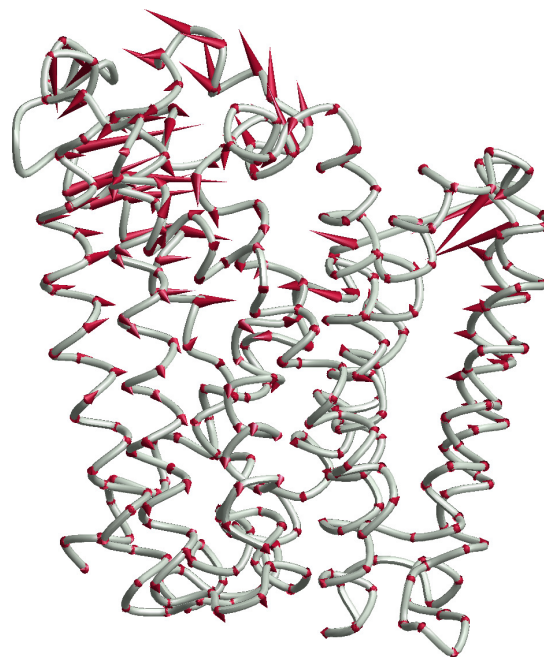
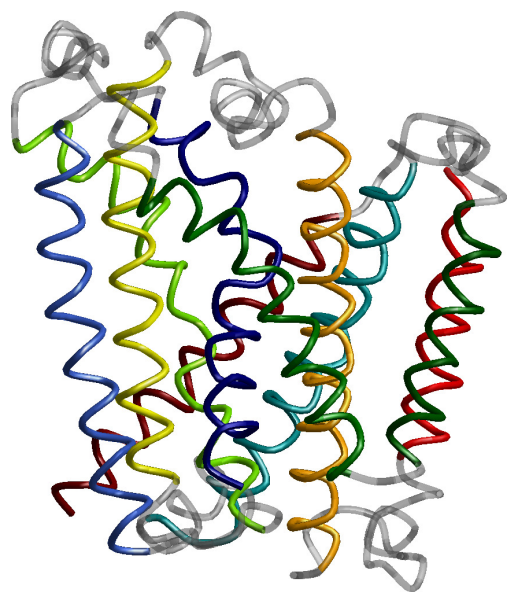
AdiC



3OB6 → 3L1L

CSe → CSec

AdiC

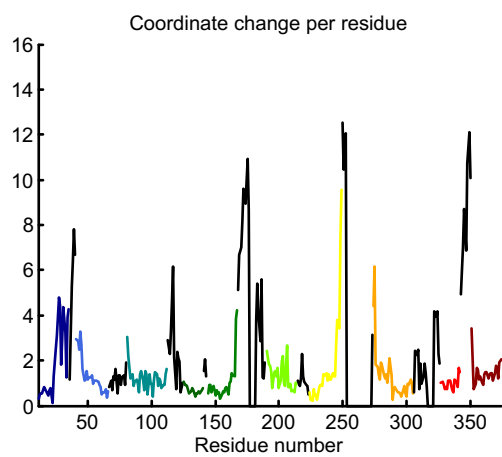
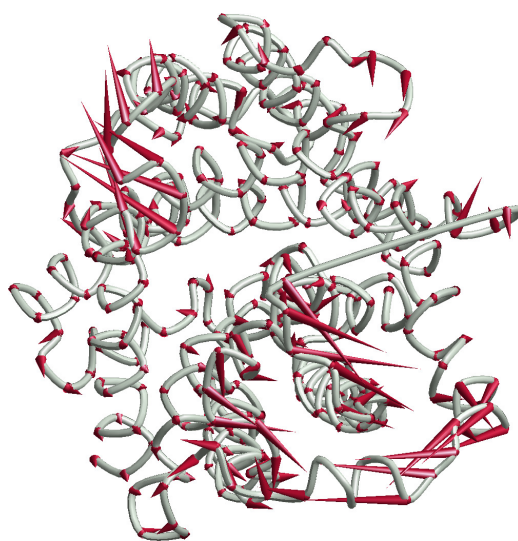
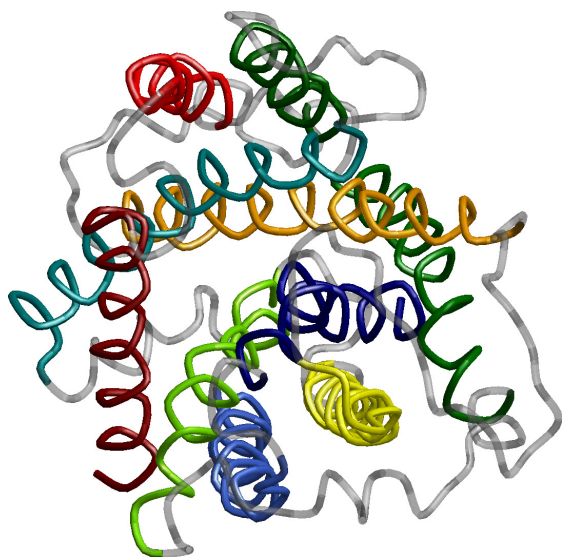
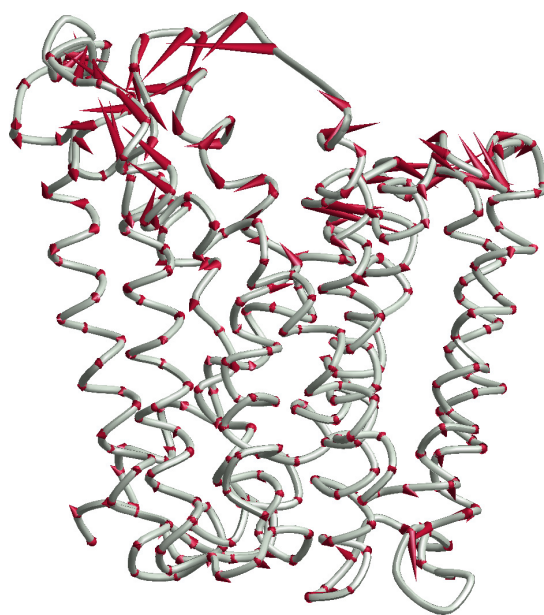
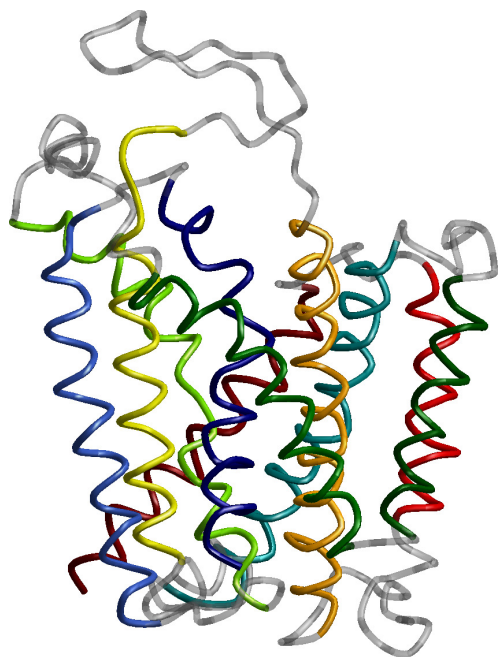




3LRB → 3NCY

Ce → Ce

AdiC



3DH4 → 2XQ2

CSic → Ci

vSGLT

