

Table W1. Characteristics of the NSCLC Patients and Lung Tissue Control Subjects.

	NSCLC Patients (<i>n</i> = 31)	Control Subjects (<i>n</i> = 10)
Age, median (range)	71 (52–79)	27 (16–69)
Male/female	28/3	9/1
Smoking status		
Smoker (%)	12 (38%)	6 (60%)
Former smoker (%)	16 (52%)	1 (10%)
Never smoker (%)	3 (10%)	3 (30%)
Histology of lung cancer cases		
AdC (%)	17 (55%)	
SCC (%)	10 (32%)	
Large cell carcinoma (%)	2 (6%)	
Other NSCLC [†] (%)	2 (6%)	
Stage of lung cancer cases [‡]		
IA	9 (29%)	
IB	9 (29%)	
IIA	4 (12%)	
IIB	3 (9.6%)	
IIIA	6 (19.4%)	

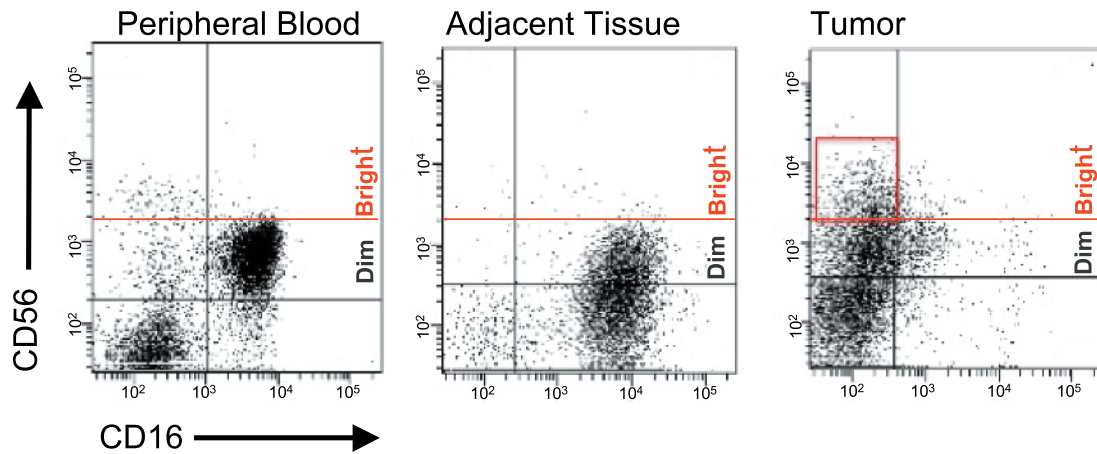


Figure W1. Representative phenotype of the CD3⁻CD56⁺CD16⁺ and CD3⁻CD56⁺CD16⁻ NK cell subsets as determined by flow cytometry in peripheral blood, adjacent lung tissues, and tumor tissues of an NSCLC patient (in this case, an adenocarcinoma) after gating on CD45 (Leucogate). Quadrants depicted are set on isotypic controls.