

SUPPLEMENTARY DATA

Supplementary Table 1. Unadjusted and Adjusted Odds Ratios for Retinopathy (defined as ETDRS score ≥ 20) by Ethnicity, Diagnosed Diabetes Status, and HbA1c% Category, Adults Aged ≥ 40 Years, NHANES 2005-2008

	No History of Diabetes			Diagnosed Diabetes	
	< 5.7%	5.7-6.4%	$\geq 6.5\%$	< 7.0%	$\geq 7.0\%$
Crude					
Non-Hispanic White	1.00 (ref)	1.67 (1.03-2.70)*	2.35 (0.87-6.31)	6.35 (4.72-8.53-6.14)*	24.31 (14.35-41.18)*
Non-Hispanic Black	1.00 (ref)	2.06 (0.85-4.97)	2.89 (1.09-7.65)*	5.30 (1.88-14.95)*	26.53 (11.06-63.61)*
Hispanic American	1.00 (ref)	1.64 (0.67-4.00)	5.44 (2.64-11.19)*	3.21 (1.30-7.90)*	13.67 (7.74-24.13)*
<i>p-for-interaction = 0.43</i>					
Age and sex-adjusted					
Non-Hispanic White	1.00 (ref)	1.55 (0.95-2.52)	2.02 (0.73-5.58)	5.76 (4.07-8.15)*	21.95 (12.98-37.10)*
Non-Hispanic Black	1.00 (ref)	1.92 (0.80-4.59)	2.57 (0.98-6.75)	4.49 (1.60-12.61)*	24.18 (10.51-55.61)*
Hispanic American	1.00 (ref)	1.60 (0.67-3.83)	5.40 (2.61-11.16)*	3.16 (1.19-8.34)*	14.79 (7.83-27.92)*
<i>p-for-interaction = 0.47</i>					
Multivariable* adjusted models					
Non-Hispanic White	1.00 (ref)	1.49 (0.89-2.49)	1.94 (0.66-5.73)	5.74 (3.74-8.80)*	22.77 (13.20-39.29)*
Non-Hispanic Black	1.00 (ref)	1.94 (0.82-4.59)	2.65 (0.94-7.52)	4.08 (1.36-12.18)*	4.08 (1.36-12.18)*
Hispanic American	1.00 (ref)	1.79 (0.73-4.38)	6.19 (2.81-13.62)*	3.43 (1.29-9.13)*	14.94 (6.98-31.96)*
<i>p-for-interaction = 0.44</i>					

* Adjusted for age, sex, body mass index (kg/m^2), hypertension status (yes; no based on self-report or measured blood pressure), history of coronary heart disease (yes; no), total cholesterol (mg/dL), education (<12 year; ≥ 12 years), income (poverty income ratio < 1; poverty income ratio ≥ 1), and smoking status (current; former; never)

SUPPLEMENTARY DATA

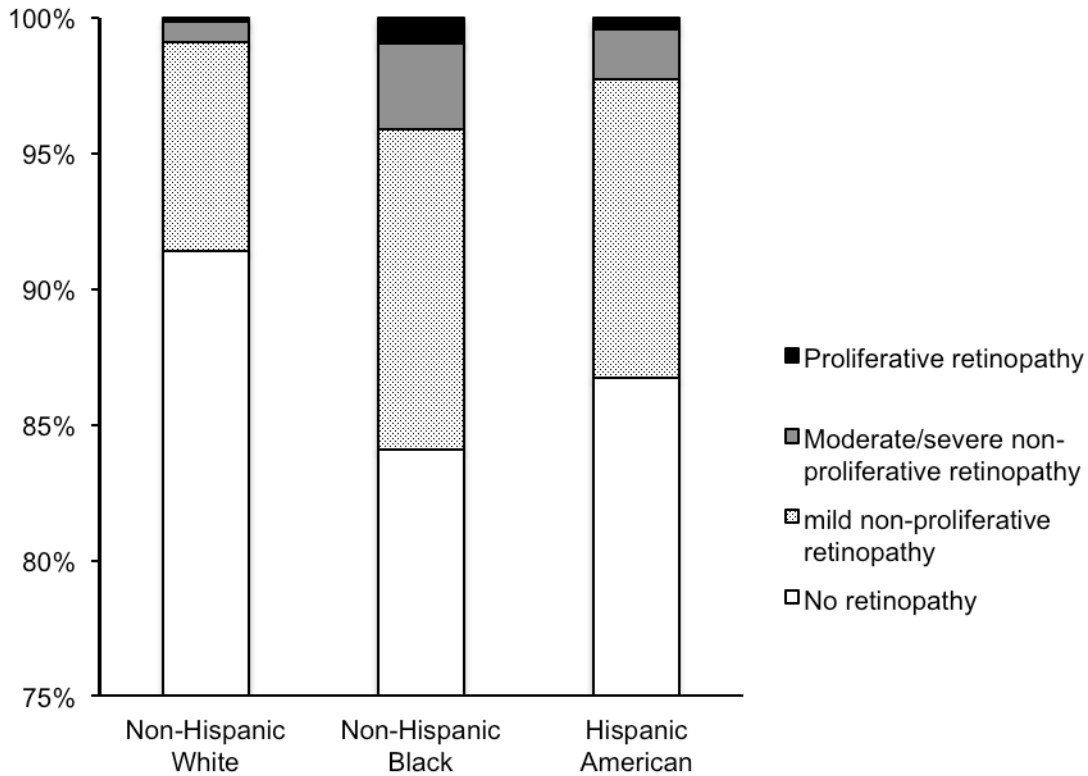
Supplementary Table 2. Odds Ratios Per 1-% Point HbA1c for Retinopathy (defined as ETDRS score ≥ 20) by Ethnicity and Diabetes Status, Adults Aged ≥ 40 Years, NHANES 2005-2008

	No History of Diabetes	Diagnosed Diabetes
Crude		
Non-Hispanic White	1.65 (1.25-2.17)	1.63 (1.34-1.97)
Non-Hispanic Black	1.41 (1.25-2.17)	1.38 (1.13-1.70)
Hispanic American	1.58 (1.26-1.82)	1.45 (1.14-1.83)
<i>p-for-interaction</i>	0.68	0.48
Age and sex-adjusted		
Non-Hispanic White	1.57 (1.18-2.09)	1.66 (1.38-1.99)
Non-Hispanic Black	1.41 (1.09-1.84)	1.42 (1.13-1.79)
Hispanic American	1.54 (1.22-1.96)	1.52 (1.17-1.98)
<i>p-for-interaction</i>	0.83	0.56
Multivariable* adjusted models		
Non-Hispanic White	1.53 (1.13-2.08)	1.73 (1.44-2.08)
Non-Hispanic Black	1.40 (1.08-1.81)	1.44 (1.12-1.86)
Hispanic American	1.58 (1.24-2.02)	1.53 (1.18-1.99)
<i>p-for-interaction</i>	0.77	0.51

*Adjusted for age, sex, body mass index (kg/m^2), hypertension status (yes; no based on self-reported or measured blood pressure), history of coronary heart disease (yes; no), total cholesterol (mg/dL), education (<12 year; ≥ 12 years), income (poverty income ratio < 1 ; poverty income ratio ≥ 1), and smoking status (current; former; never).

SUPPLEMENTARY DATA

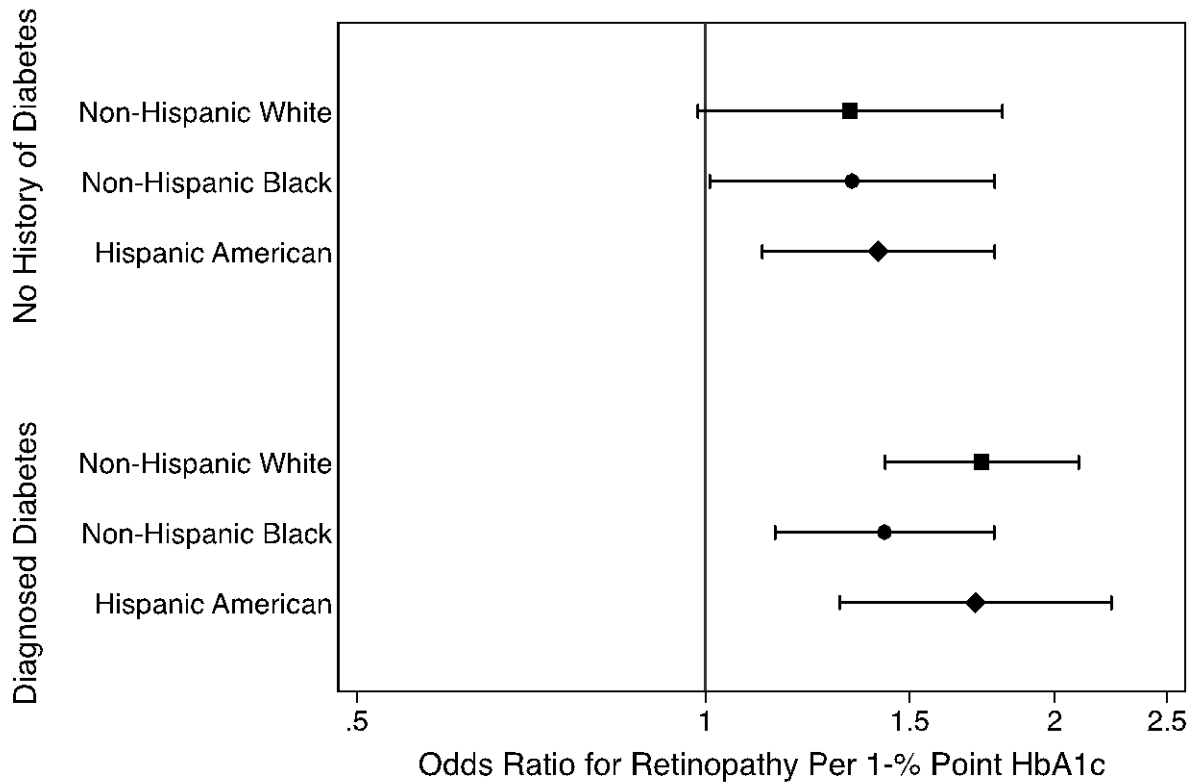
Supplementary Figure 1. Distribution of Retinopathy Severity Scores by Ethnicity, NHANES 2005-2008



Proportions are weighted to account for the complex survey design. Based on the EDTRS score, no retinopathy=levels 10-13; mild non-proliferative retinopathy=levels 14-31; moderate/severe non-proliferative retinopathy=levels 41-51; and proliferative retinopathy=levels 60-80.

SUPPLEMENTARY DATA

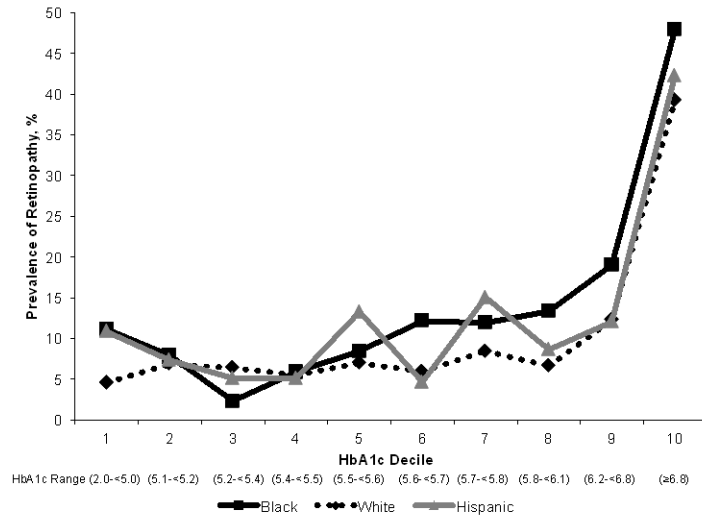
Supplementary Figure 2. Adjusted* Odds Ratios (95% CI) for Retinopathy Per 1-% Point Difference in HbA1c by Ethnic Group and Diabetes Status, Adults Aged ≥ 40 Years, NHANES 2005-2008



Weighted OR \pm SE and adjusted for age, sex, body mass index (kg/m^2), hypertension status (yes; no), history of coronary heart disease (yes; no), total cholesterol (mg/dL), education (<12 year; ≥ 12 years), income (poverty income ratio < 1 ; poverty income ratio ≥ 1), and smoking status (current; former; never).

SUPPLEMENTARY DATA

Supplementary Figure 3. Age-adjusted Prevalence of Any Retinopathy* by Ethnic Group and Decile of HbA1c%, Adults Aged ≥ 40 Years, U.S. 2005-2008



Retinopathy level was defined as an Early Treatment Diabetic Retinopathy Study level of 14 or greater. Estimates are weighted proportions and are age-standardized to the 2010 census population. Decile categories are based on the distribution of HbA1c in the study population.