

Supplemental Figure 1

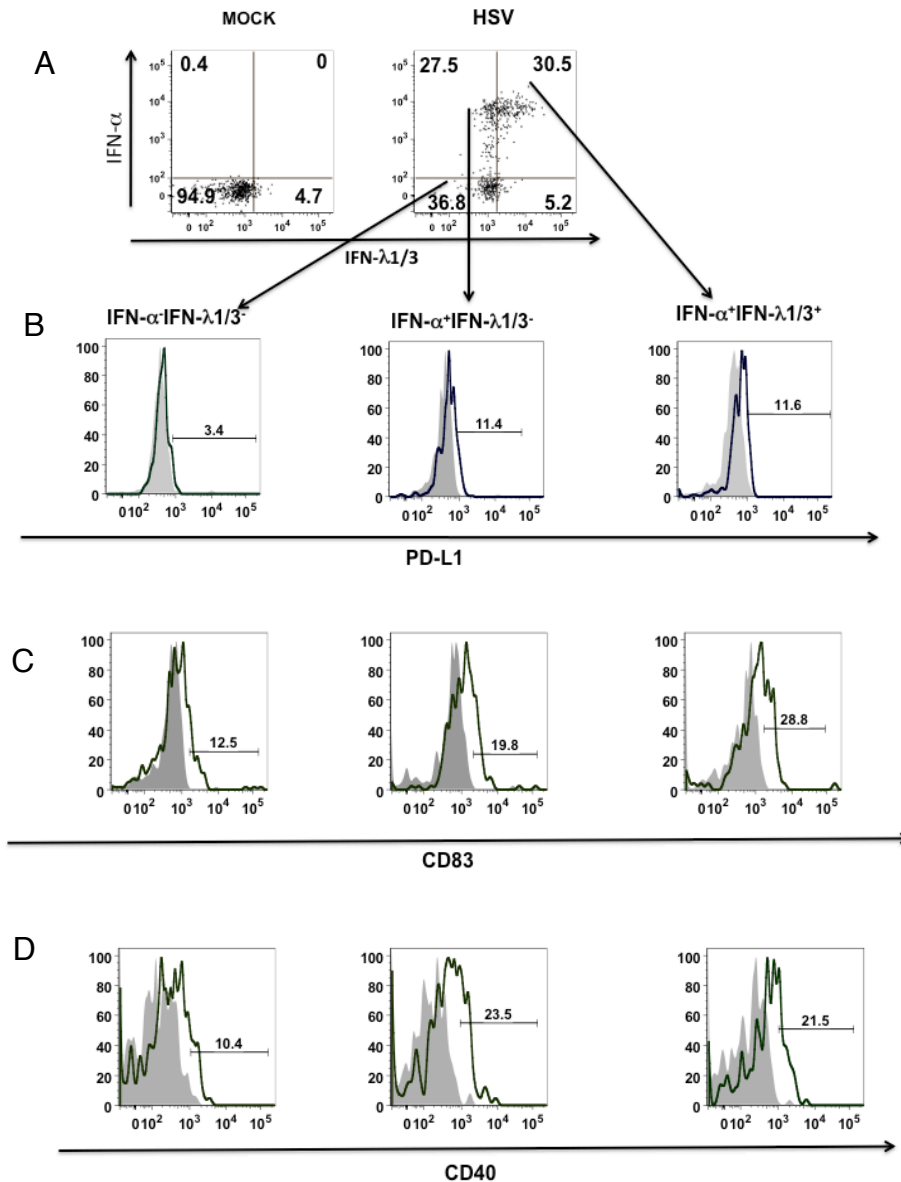


Figure 1. PBMC were stimulated with or without HSV-1 (MOI=1). After 7hr stimulation, the maturation phenotype of pDC in the IFN-α⁺ IFN-λ1/3⁺ double positive, double negative and IFN-α⁺ IFN-λ1/3⁻ single positive cells was examined by flow analysis. (A) Gating strategy for double positive pDC for both IFN-α⁺ IFN-λ1/3⁺ producing cells and other subpopulations. Expression of PD-L1 (B), CD83 (C) and CD40 (D) is shown for double negative (IFN-α⁻ IFN-λ1/3⁻), single positive (IFN-α⁺ IFN-λ1/3⁻) and double positive (IFN-α⁺ IFN-λ1/3⁺) pDC. Histogram overlays comparing isotype control (filled) and each marker (line). Data are representative of two independent experiments.

Supplemental Figure 2

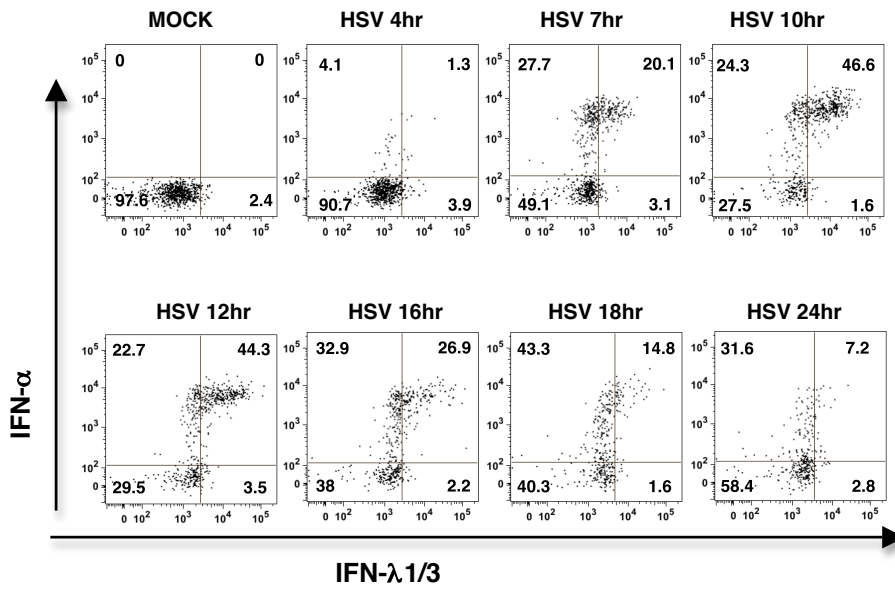


Figure 2. PBMC were stimulated with HSV at MOI=1. At the time points as indicated, the cells were collected and immediately surface stained with CD123-APC and BDCA2-FITC to identify the pDC population, then followed with intracellular staining for the detection of both IFN- α and IFN- λ 1/3 as described. Data are representative of two independent experiments.