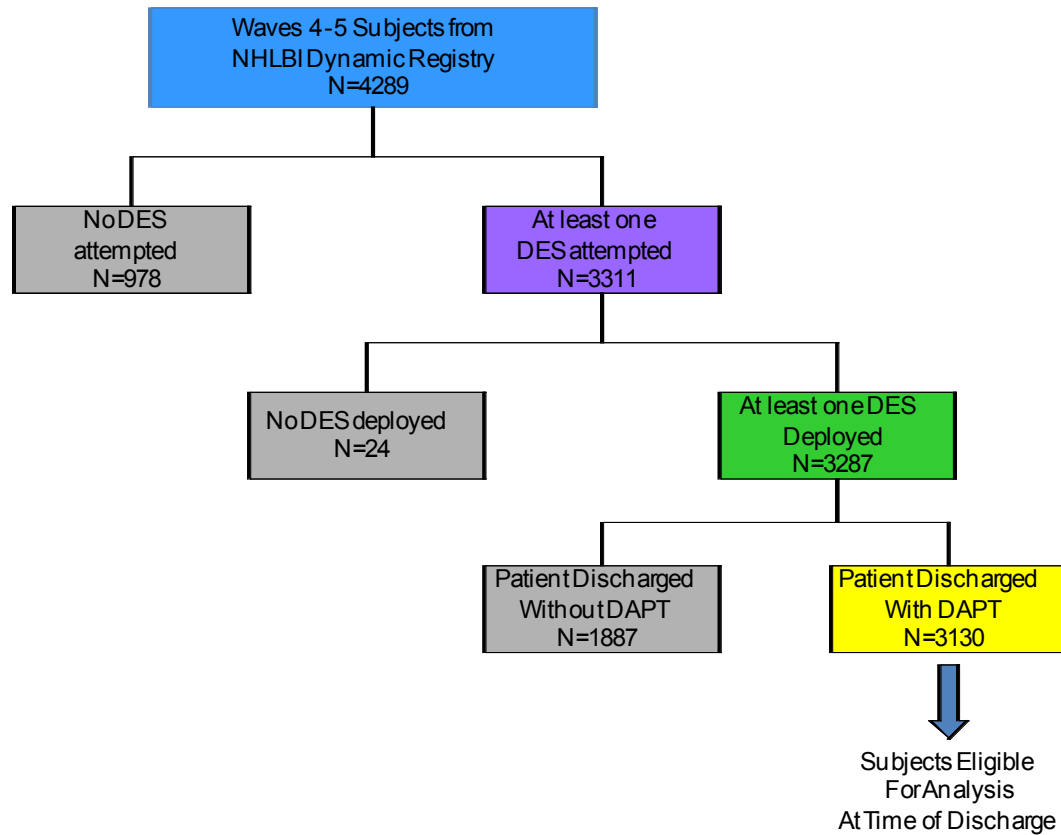


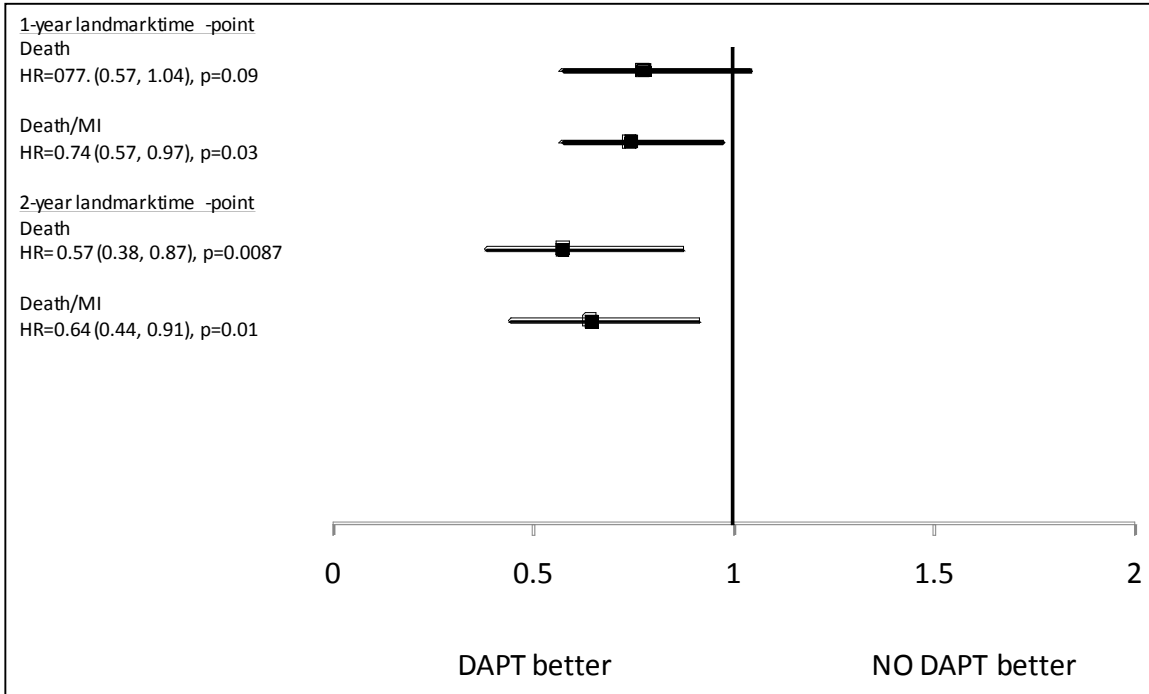
SUPPLEMENTAL MATERIAL

Supplemental Figure 1: Flow diagram representing subjects eligible for this analysis from NHLBI Dynamic Registry Waves 4-5 recruitment cohorts*



NHLBI, National Heart, Lung, Blood Institute; DAPT, Dual antiplatelet therapy defined as therapy with aspirin and clopidogrel; DES, Drug-eluting stent

Supplemental Figure 2: Propensity Adjusted Relative risk for Death and Death/MI with Dual Anti-platelet Therapy at 12- and 24-Month Landmark Time Points



HR, hazard ratio; MI, myocardial infarction; DAPT, dual anti-platelet therapy

Supplemental Table Ia: Reason for Discontinuation of Antiplatelet Medications in Wave
 5 Subjects who were Not on Dual Antiplatelet Therapy at 12 Month-Landmark Time
 Point.

12-Month Landmark Analysis	Aspirin & No Clopidogrel (N=200)	Clopidogrel & No Aspirin (N=32)	Neither Aspirin nor Clopidogrel (N=27)	
			No Aspirin	No Clopidogrel
Physician discontinued Medication(s), %	90.0	68.8	66.6	77.8
Patient Non-compliance, %	4.5	25.0	29.6	22.2
Unknown, %	5.5	6.3	3.7	0.0

Supplemental Table Ib: Reason for Discontinuation of Antiplatelet Medications in Wave
 5 Subjects who were Not on Dual Antiplatelet Therapy at 24 Month-Landmark Time
 Point.

24-Month Landmark	Aspirin & No Clopidogrel (N=336)	Clopidogrel & No Aspirin (N=44)	Neither Aspirin nor Clopidogrel (N=36)	
			No Aspirin	No Clopidogrel
Physician discontinued Medication(s), %	90.8	65.9	77.8	80.6
Patient Non-compliance, %	3.3	20.5	16.7	11.1
Unknown, %	6.0	13.6	5.6	8.3

Supplemental Table II: Subgroup Analysis of the Adjusted Relative Risk for Death and Myocardial Infarction for Dual Antiplatelet Therapy versus No Dual Antiplatelet at 12-Month and 24-Month Landmarks.

Death/MI AHR Rates for DAPT (vs No DAPT)	One Year Landmark				Two Year Landmark			
	N	AHR	95% CI	P value	N	AHR	95% CI	P Value
No Diabetes	1532	0.74	0.53, 1.03	0.07	1374	0.64	0.39, 1.05	0.08
Diabetes	624	0.82	0.52, 1.29	0.39	544	0.87	0.50, 1.51	0.63
GFR<60	549	0.62	0.43, 0.92	0.02	470	0.63	0.38, 1.05	0.08
GFR>=60	1538	0.77	0.53, 1.13	0.18	1386	0.55	0.32, 0.94	0.03
Age<60	838	0.92	0.52, 1.61	0.76	749	0.87	0.43, 1.77	0.70
Age 60-75	905	0.69	0.45, 1.04	0.08	809	0.64	0.37, 1.09	0.10
Age >75	413	0.68	0.43, 1.07	0.09	360	0.56	0.29, 1.09	0.09
Prior MI	497	1.13	0.66, 1.93	0.65	431	1.11	0.54, 2.28	0.77
No Prior MI	1659	0.66	0.48, 0.90	0.0084	1487	0.51	0.33, 0.79	0.002
Unstable Angina	707	0.90	0.55, 1.47	0.67	616	0.47	0.23, 0.95	0.04
Stable Angina	463	0.49	0.26, 0.93	0.03	417	1.17	0.48, 2.89	0.73
Acute MI	586	0.63	0.38, 1.05	0.08	522	0.65	0.33, 1.30	0.22
One Vessel CAD	806	1.30	0.76, 2.22	0.34	722	1.58	0.79, 3.15	0.19
Two Vessel CAD	708	0.60	0.37, 0.98	0.04	632	0.28	0.13, 0.59	0.0008
Three Vessel CAD	637	0.55	0.36, 0.82	0.0037	560	0.64	0.36, 1.11	0.11

Off label use	1034	0.69	0.48, 0.99	0.05	912	0.42	0.25, 0.70	0.0009
Pt received >1 DES	838	0.61	0.40, 0.94	0.02	745	0.31	0.17, 0.58	0.0002
Pt Received BMS and DES at Index PCI	109	0.55	0.19, 1.59	0.27	97	1.04	0.21, 5.21	0.96
Pt Received DES in prox LAD	346	0.57	0.28, 1.16	0.12	312	0.57	0.20, 1.64	0.30
Pt Received DES in Left Main	59	1.33	0.24, 7.55	0.75	---	---	---	---
Pt Received DES in a Bifurcation Lesion	273	0.45	0.23, 0.86	0.02	240	0.22	0.08, 0.61	0.0035

MI, myocardial infarction; AHR, adjusted hazard ratio; C.I., confidence interval; GFR, Glomerular filtration rate; MI, myocardial infarction; DES, drug-eluting stent; BMS, bare-metal stent; PCI, percutaneous coronary intervention; Prox LAD, proximal segment of the left anterior descending artery