

Supporting Information

Cytotoxic Alkaloids from the Whole Plants of *Zephyranthes candida*

Zengwei Luo,^{†,||} Fuqian Wang,^{†,||} Jinwen Zhang,[‡] Xingyao Li,[§] Mengke Zhang,[†] Xincai Hao,[†] Yongbo Xue,[†] Yan Li,[§] F. David Horgen,[⊥] Guangmin Yao,^{†,*} Yonghui Zhang^{†,*}

[†]Hubei Key Laboratory of Natural Medicinal Chemistry and Resource Evaluation, School of Pharmacy, Tongji Medical College, Huazhong University of Science and Technology, Wuhan 430030, People's Republic of China

[‡]Tongji Hospital Affiliated to Tongji Medical College, Huazhong University of Science and Technology, Wuhan 430030, People's Republic of China

[§]State Key Laboratory of Phytochemistry and Plant Resources in West China, Kunming Institute of Botany, Chinese Academy of Science, Kunming 650204, People's Republic of China

[⊥]Laboratory of Marine Biological Chemistry, Department of Natural Sciences, Hawaii Pacific University, Kaneohe, HI 96744, U.S.A.

List of Supporting Information

Figure S1. (+)-HR-ESI-MS spectrum of **1**

Figure S2. ¹H NMR spectrum of **1** in CD₃OD

Figure S3. ¹³C NMR spectrum of **1** in CD₃OD

Figure S4. DEPT 135 spectrum of **1** in CD₃OD

Figure S5. HSQC spectrum of **1** in CD₃OD

Figure S6. HMBC spectrum of **1** in CD₃OD

Figure S7. ¹H-¹H COSY spectrum of **1** in CD₃OD

Figure S8. NOESY spectrum of **1** in CD₃OD

Figure S9. CD spectrum of **1** in MeOH

Figure S10. (+)-HR-ESI-MS spectrum of **5**

Figure S11. ¹H NMR spectrum (400 MHz) of **5** in CD₃OD

Figure S12. ¹³C NMR spectrum (100 MHz) of **5** in CD₃OD

Figure S13. DEPT 135 spectrum (100 MHz) of **5** in CD₃OD

Figure S14. HSQC spectrum of **5** in CD₃OD

Figure S15. HMBC spectrum of **5** in CD₃OD

Figure S16. ¹H-¹H COSY spectrum of **5** in CD₃OD

Figure S17. NOESY spectrum of **5** in CD₃OD

Figure S18. (+)-HR-ESI-MS spectrum of **6**

* To whom correspondence should be addressed. (G.Y.) Tel: 86 15171484550. Fax: 86 27 83692762. E-mail: gyap@mail.hust.edu.cn. (Y.Z.) Tel: 86 27-83692311. Fax: 86 27 83692762. E-mail: zhangyh@mails.tjmu.edu.cn

Figure S19. ^1H NMR spectrum (400 MHz) of **6** in CD_3OD

Figure S20. ^{13}C NMR spectrum (100 MHz) of **6** in CD_3OD

Figure S21. DEPT 135 spectrum of **6** in CD_3OD

Figure S22. HSQC spectrum of **6** in CD_3OD

Figure S23. HMBC spectrum of **6** in CD_3OD

Figure S24. ^1H - ^1H COSY spectrum of **6** in CD_3OD

Figure S25. NOESY spectrum of **6** in CD_3OD

Figure S26. (+)-HR-ESI-MS spectrum of **7**

Figure S27. ^1H NMR spectrum (400 MHz) of **7** in CDCl_3

Figure S28. ^{13}C NMR spectrum (100 MHz) of **7** in CDCl_3

Figure S29. DEPT 135 spectrum of **7** in CDCl_3

Figure S30. HSQC spectrum of **7** in CDCl_3

Figure S31. HMBC spectrum of **7** in CDCl_3

Figure S32. ^1H - ^1H COSY spectrum of **7** in CDCl_3

Figure S33. (+)-HR-ESI-MS spectrum of **8**

Figure S34. ^1H NMR spectrum (400 MHz) of **8** in CDCl_3

Figure S35. ^{13}C NMR spectrum (100 MHz) of **8** in CDCl_3

Figure S36. DEPT 135 spectrum of **8** in CDCl_3

Figure S37. HSQC spectrum of **8** in CDCl_3

Figure S38. HMBC spectrum of **8** in CDCl_3

Figure S39. ^1H - ^1H COSY spectrum of **8** in CDCl_3

Figure S40. (+)-HR-ESI-MS spectrum of **9**

Figure S41. ^1H NMR spectrum (400 MHz) of **9** in CDCl_3

Figure S42. ^{13}C NMR spectrum (100 MHz) of **9** in CDCl_3

Figure S43. DEPT 135 spectrum of **9** in CDCl_3

Figure S44. HSQC spectrum of **9** in CDCl_3

Figure S45. HMBC spectrum of **9** in CDCl_3

Figure S46. ^1H - ^1H COSY spectrum of **9** in CDCl_3

Figure S47. (+)-HR-ESI-MS spectrum of **10**

Figure S48. ^1H NMR spectrum (400 MHz) of **10** in CDCl_3

Figure S49. ^{13}C NMR spectrum (100 MHz) of **10** in CDCl_3

Figure S50. DEPT 135 spectrum of **10** in CDCl_3

Figure S51. HSQC spectrum of **10** in CDCl_3

Figure S52. HMBC spectrum of **10** in CDCl_3

Figure S53. ^1H - ^1H COSY spectrum of **10** in CDCl_3

Figure S54. Crystal Cell packing of compound **1**

Figure S55. Crystal packing of compound **3** at 100 (2) K

Table S1. Cytotoxicity of Compounds 1–15 (IC_{50} in μM) Against Five Cancer Cell Lines and One Non-Cancerous Human Beas-2B Cell Line

Figure S1. HR-MS spectrum of **1**

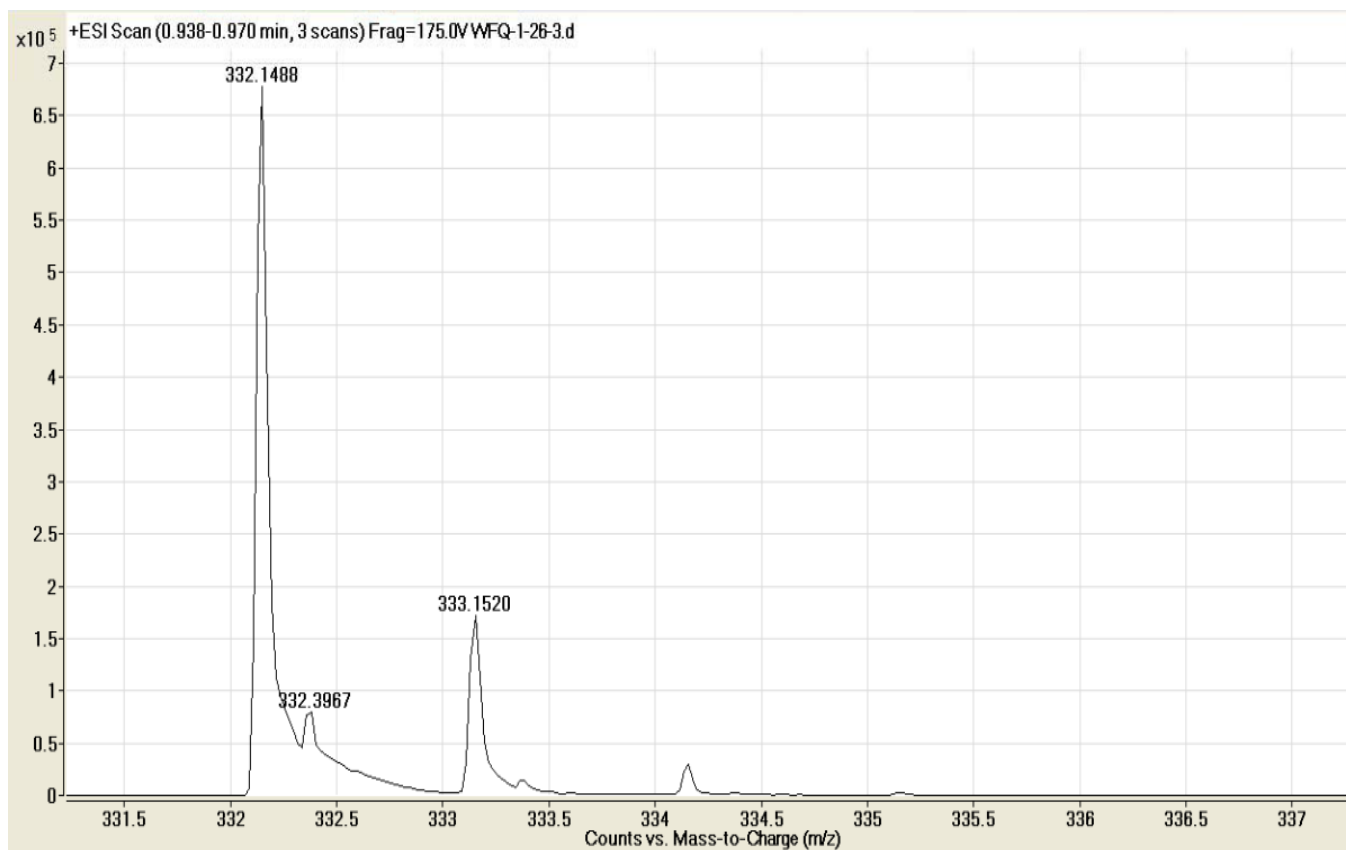


Figure S2. ¹H NMR spectrum (400 MHz) of **1** in CD₃OD

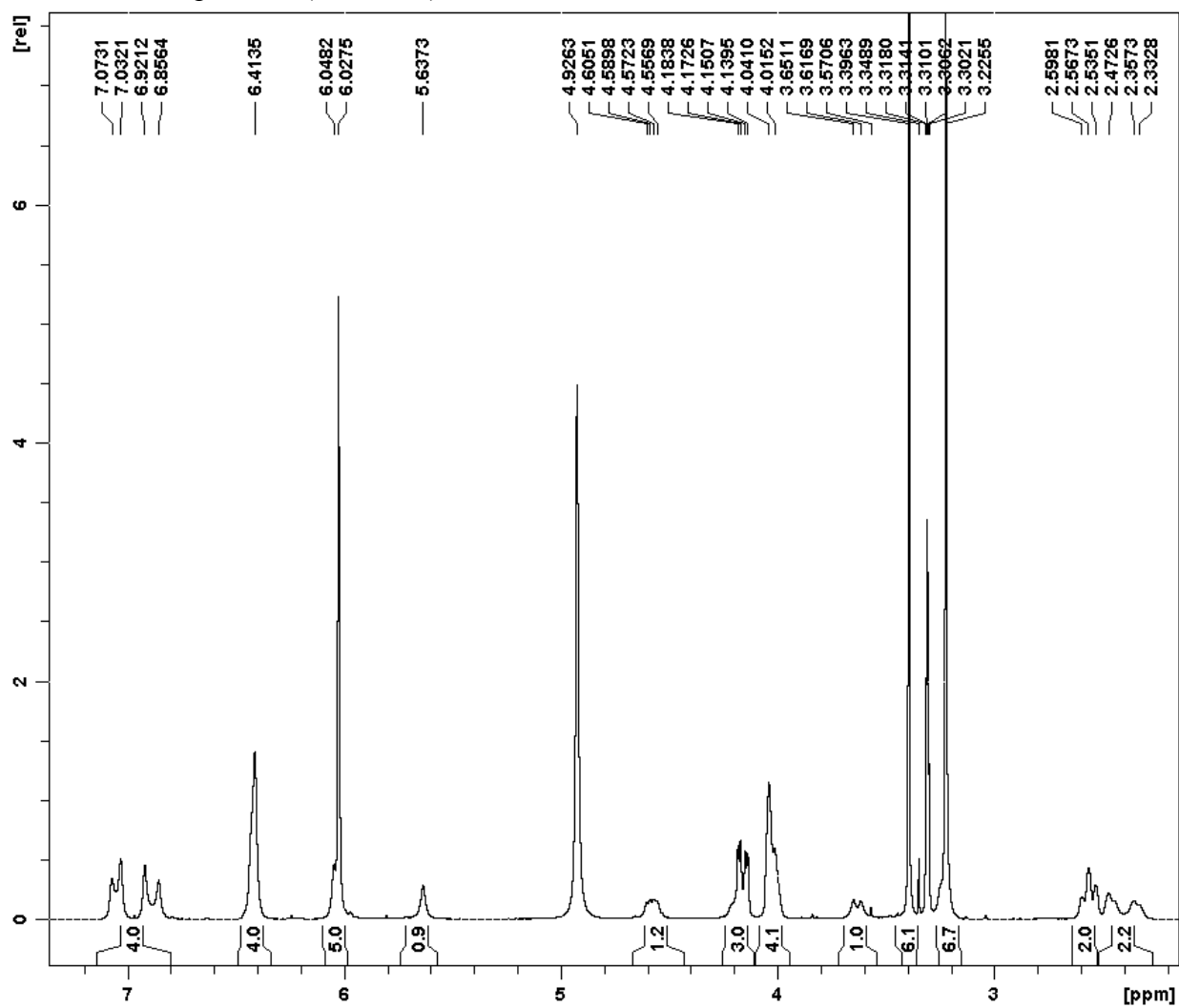


Figure S3. ^{13}C NMR spectrum (100 MHz) of **1** in CD_3OD

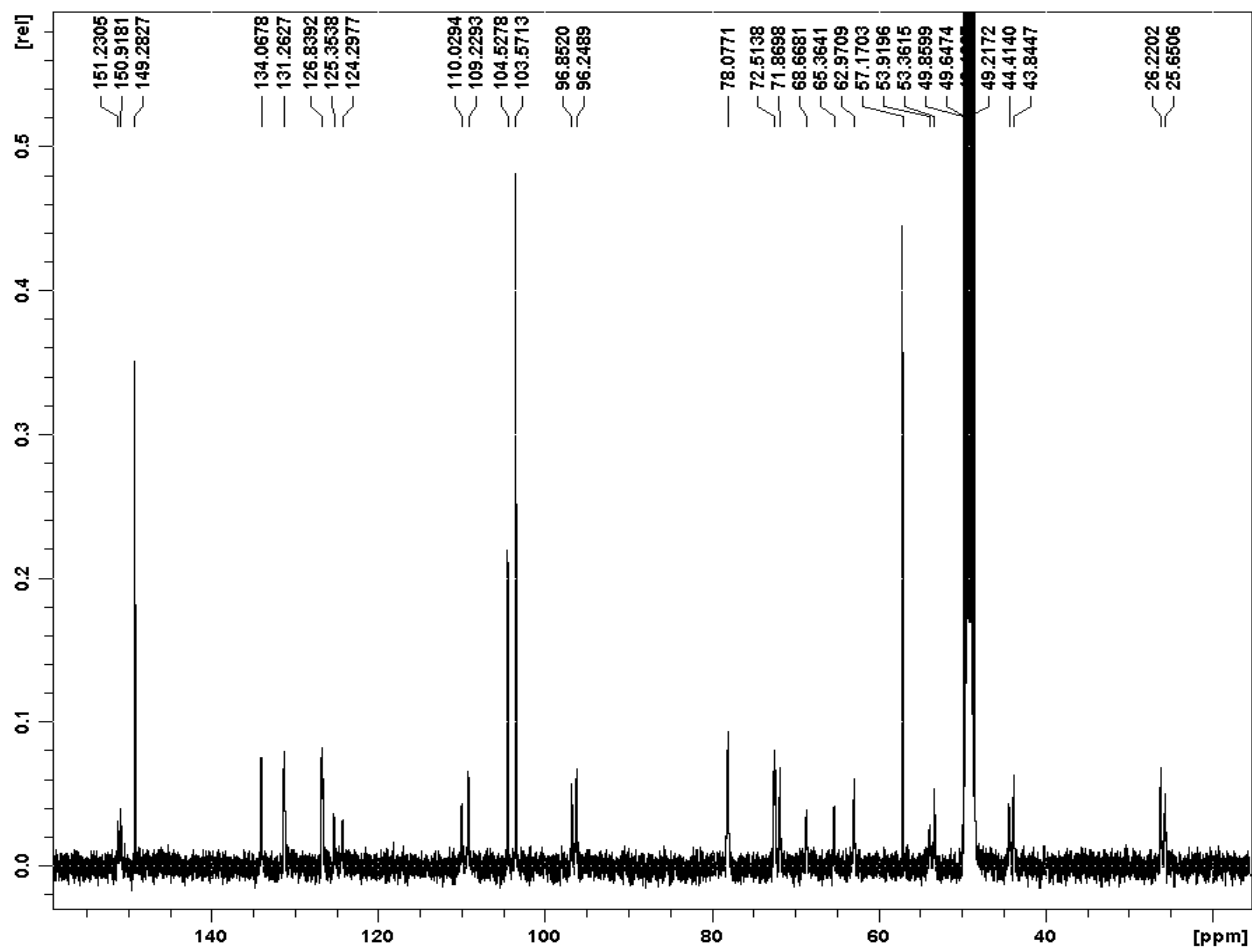


Figure S4. DEPT 135 spectrum (100 MHz) of **1** in CD_3OD

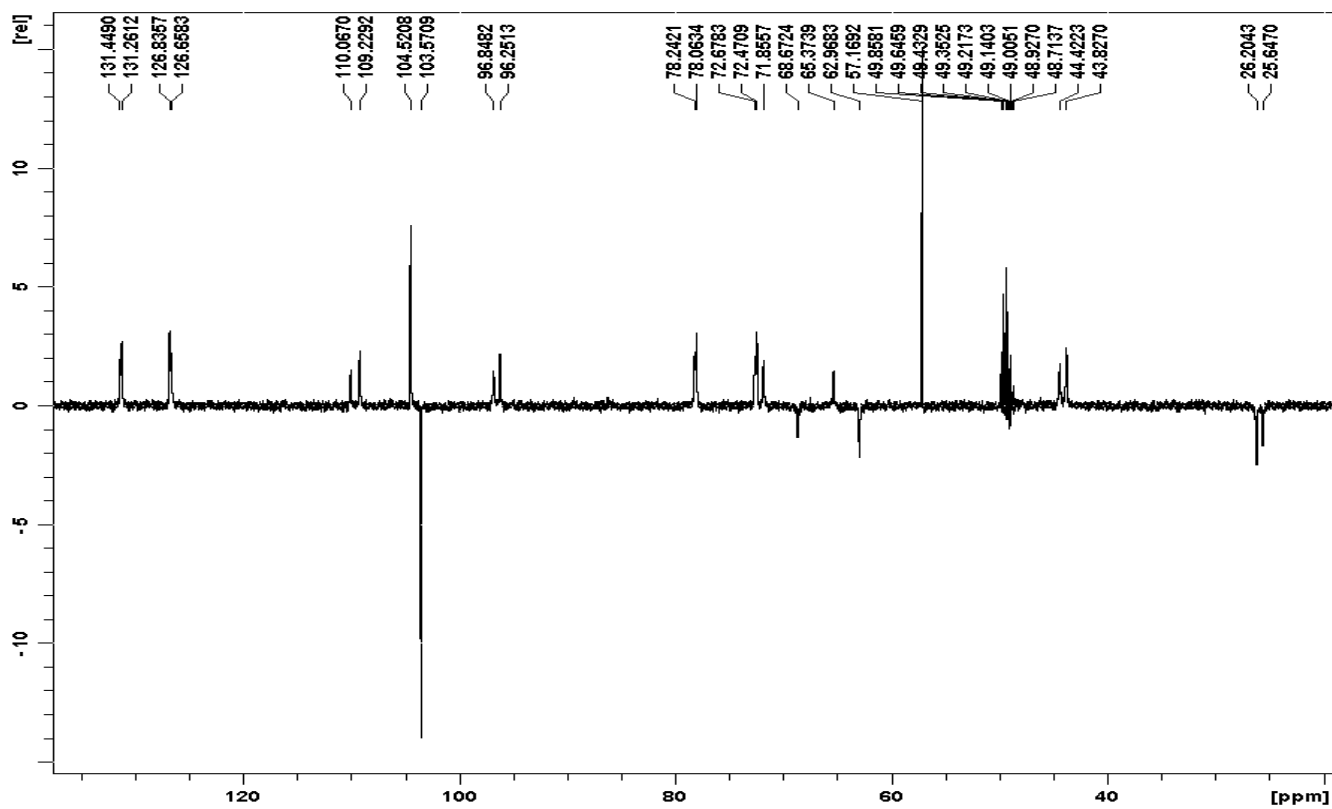


Figure S5. HSQC spectrum of **1** in CD₃OD

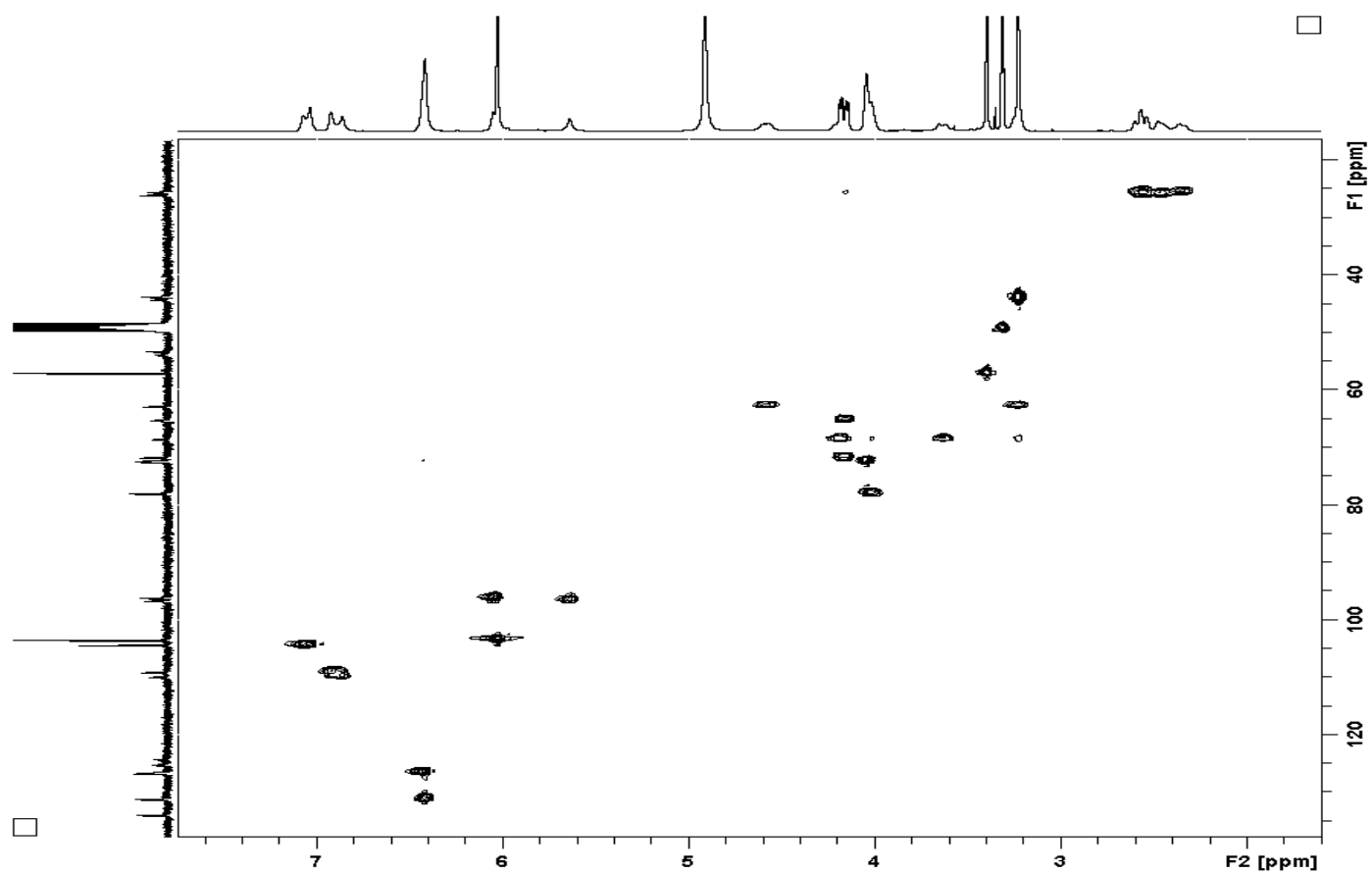


Figure S 6. HMBC spectrum of **1** in CD₃OD

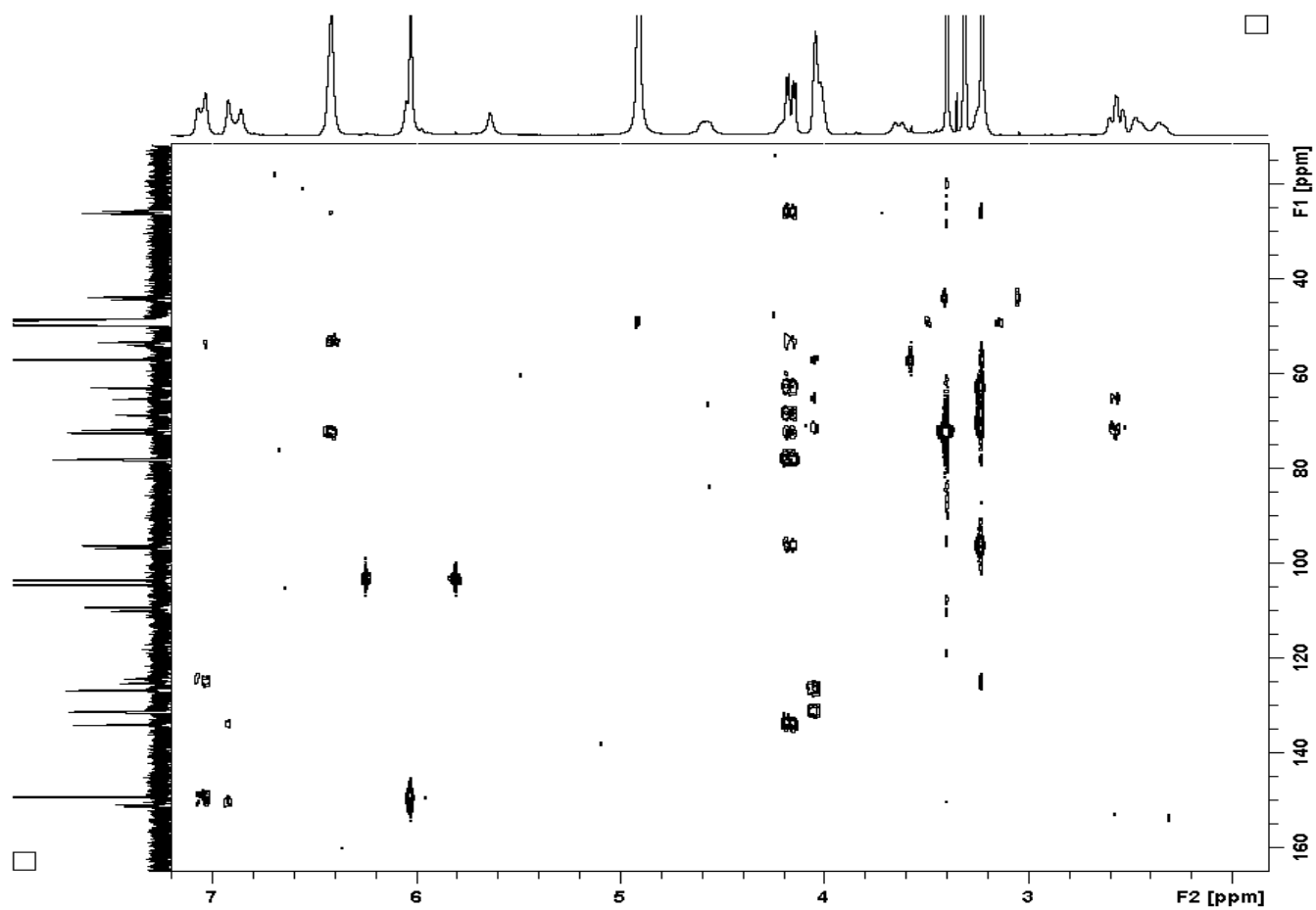


Figure S7. ^1H - ^1H COSY spectrum of **1** in CD_3OD

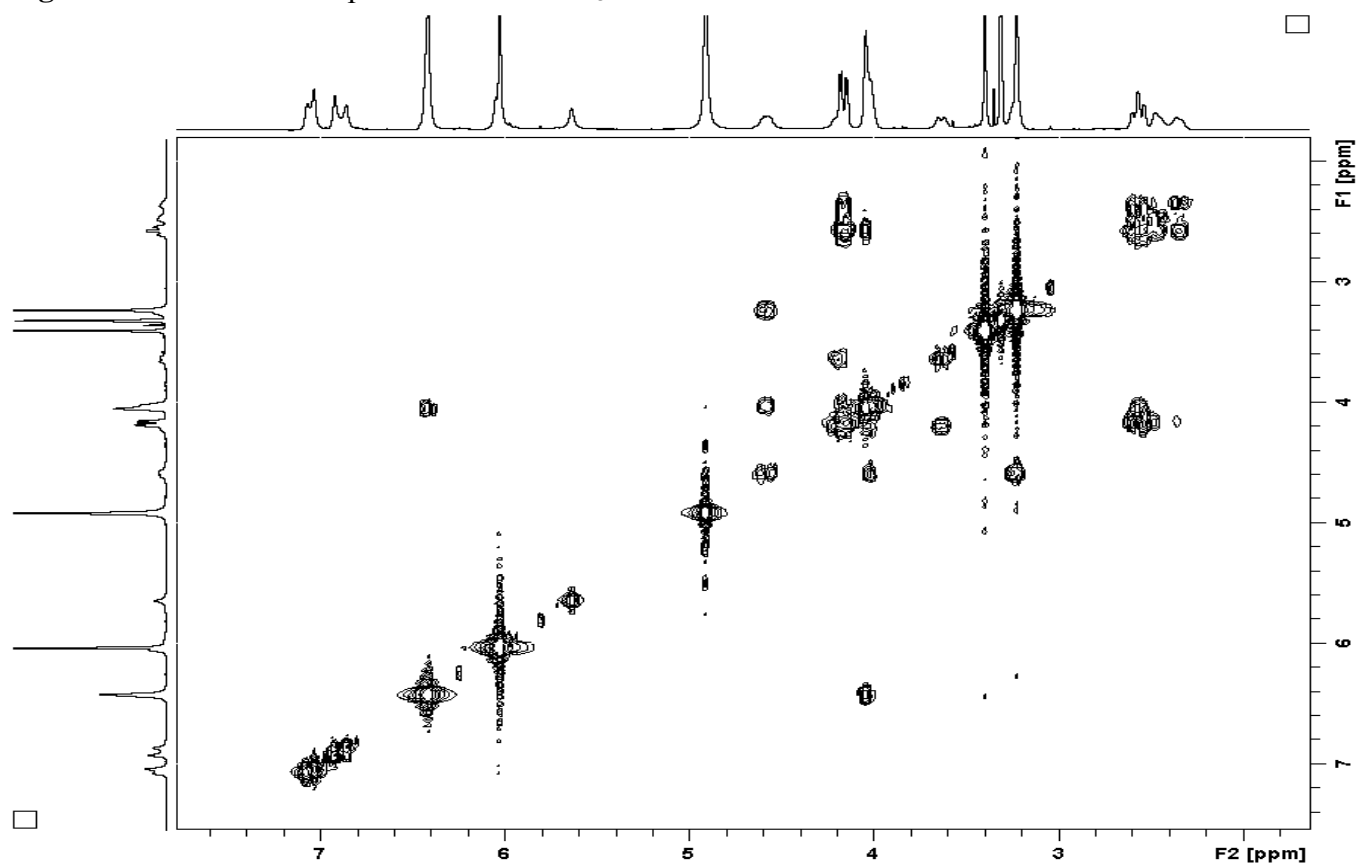


Figure S8. NOESY spectrum of **1** in CD_3OD

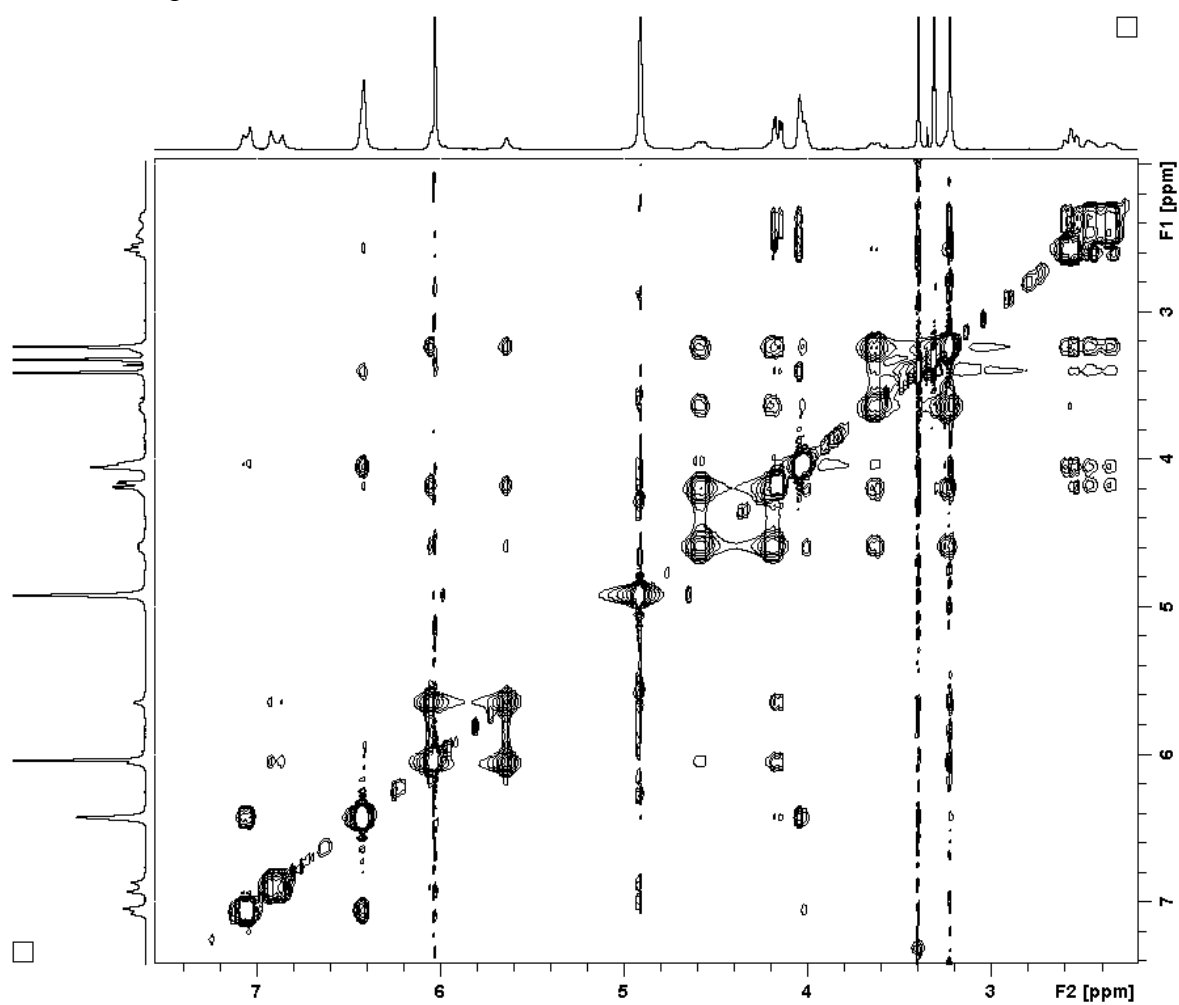


Figure S9. CD spectrum of **1** in MeOH

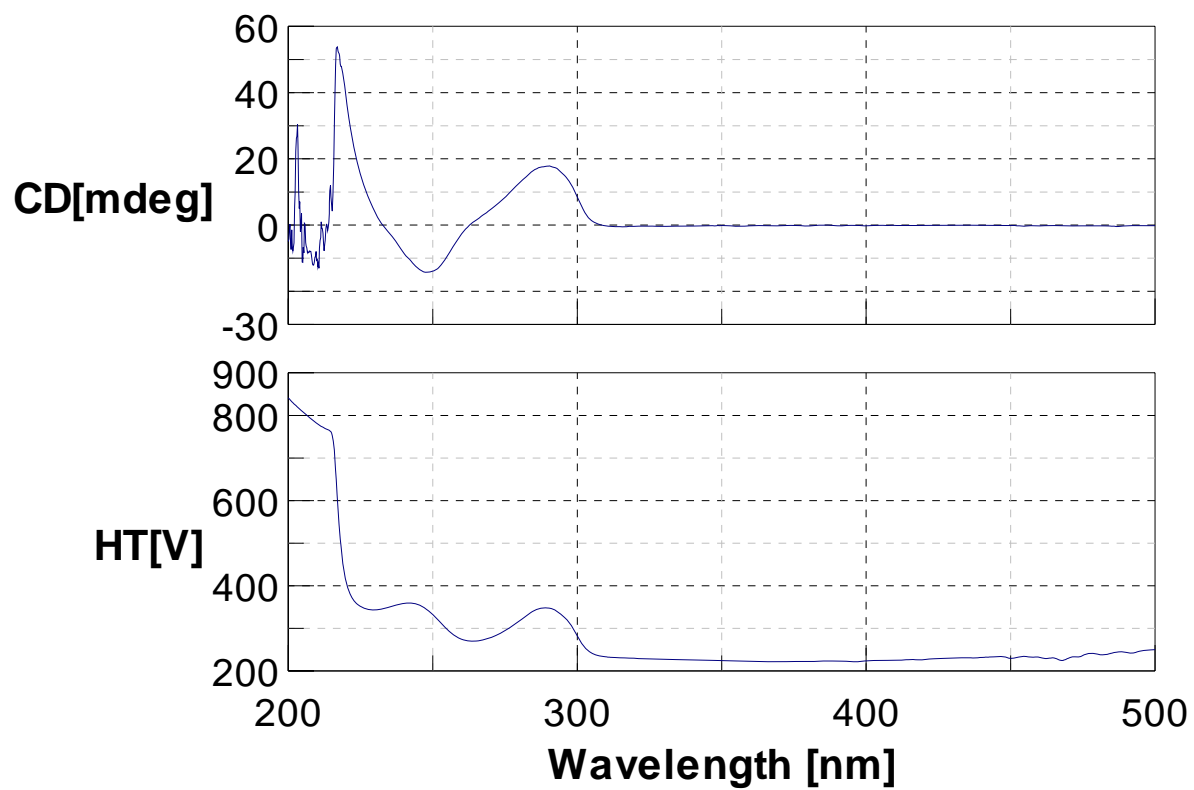


Figure S10. (+)-HR-ESI-MS spectrum of **5**

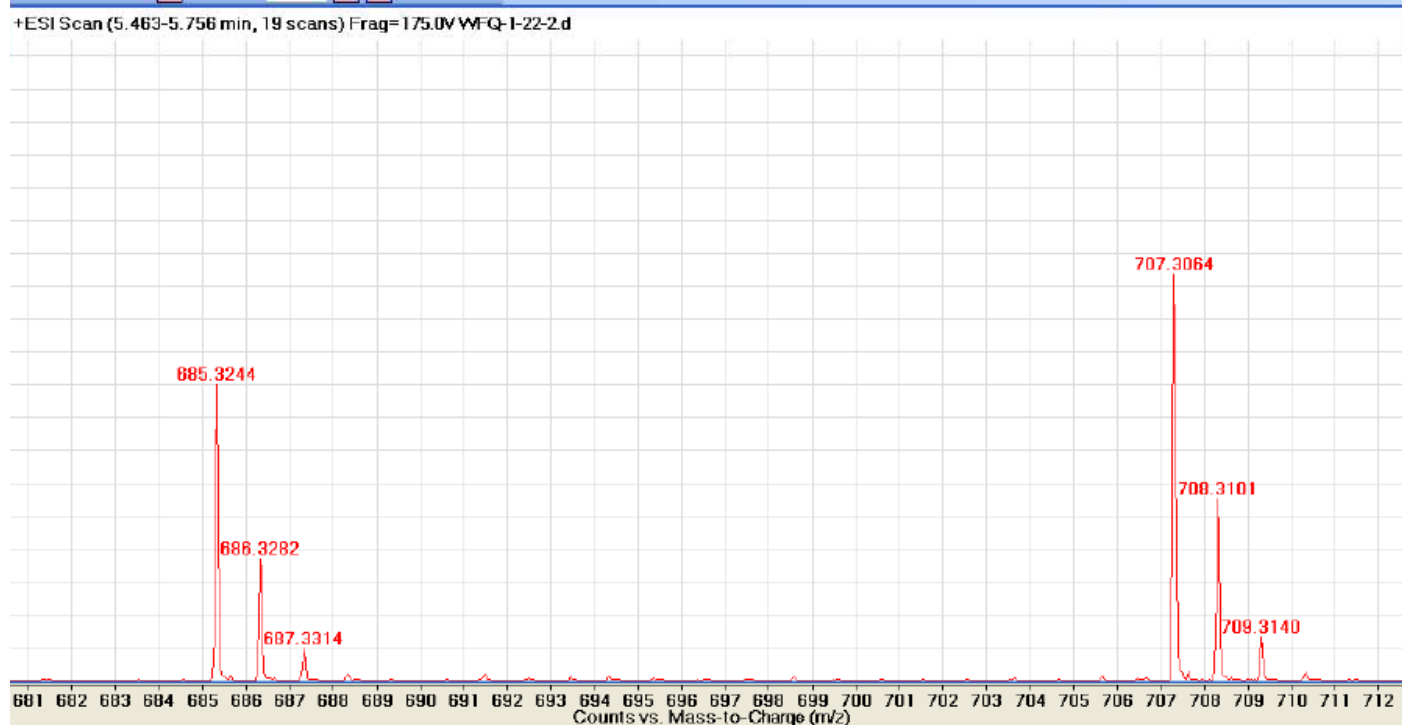
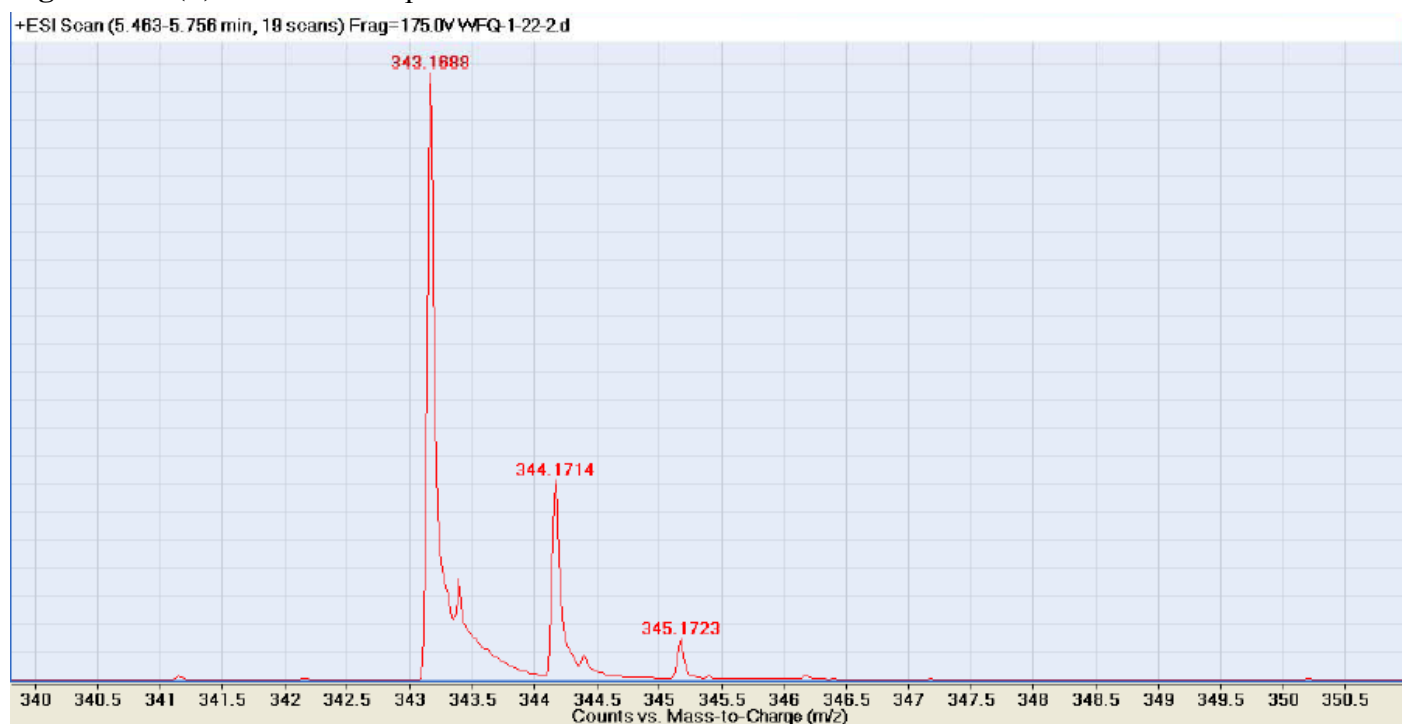


Figure S11. ^1H NMR spectrum (400 MHz) of **5** in CD_3OD

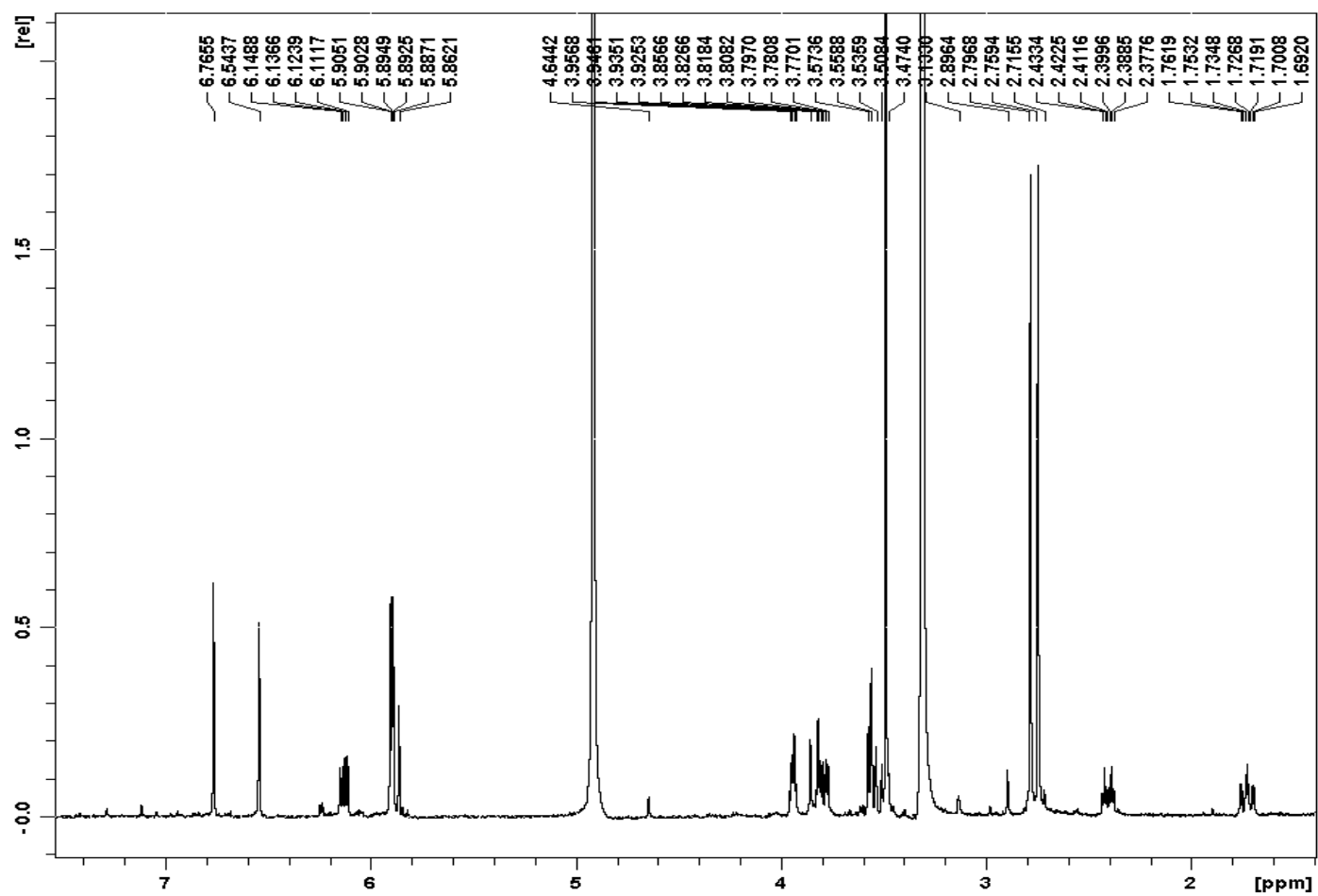


Figure S12. ^{13}C NMR spectrum (100 MHz) of **5** in CD_3OD

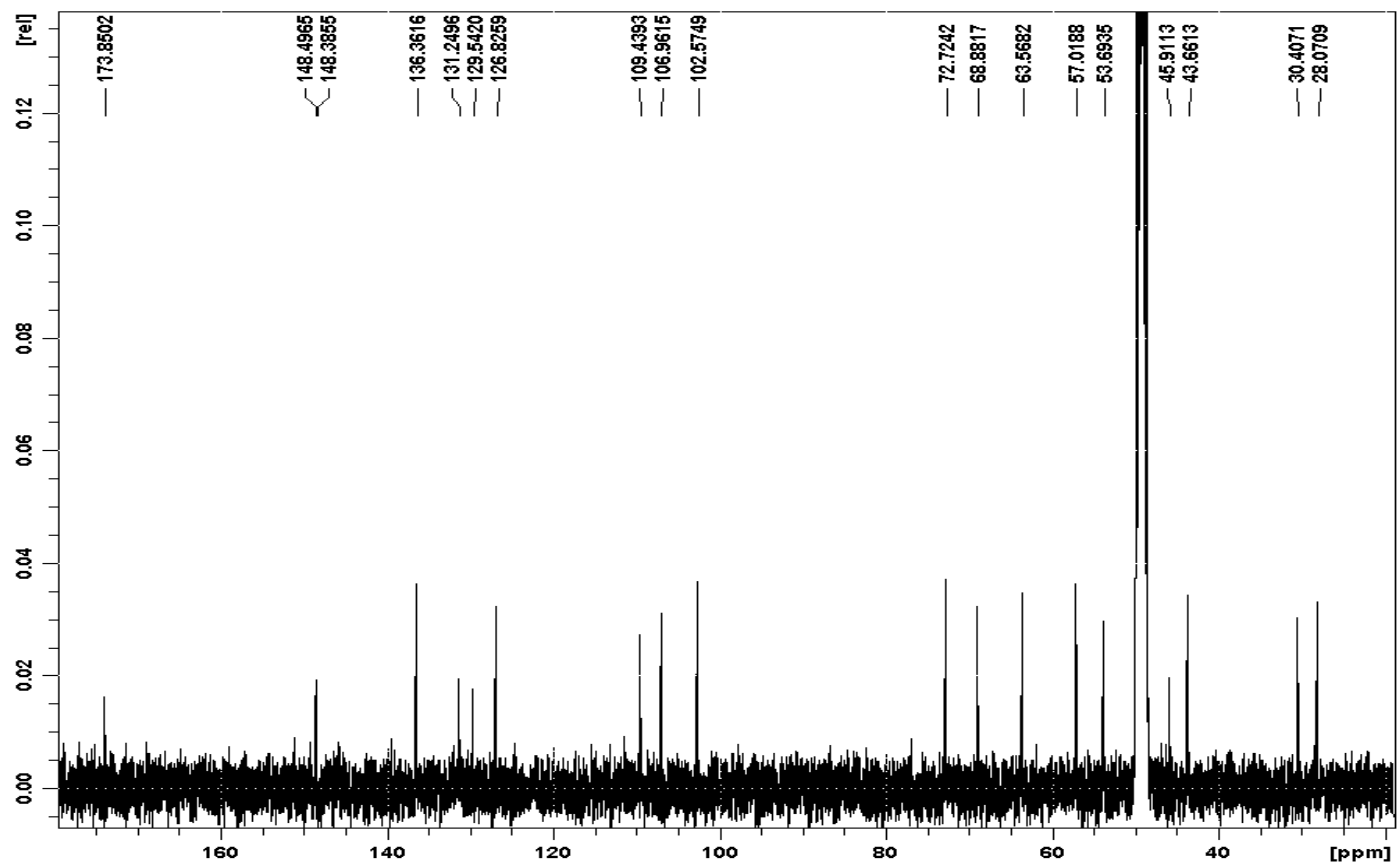


Figure S13. DEPT 135 spectrum (100 MHz) of **5** in CD₃OD

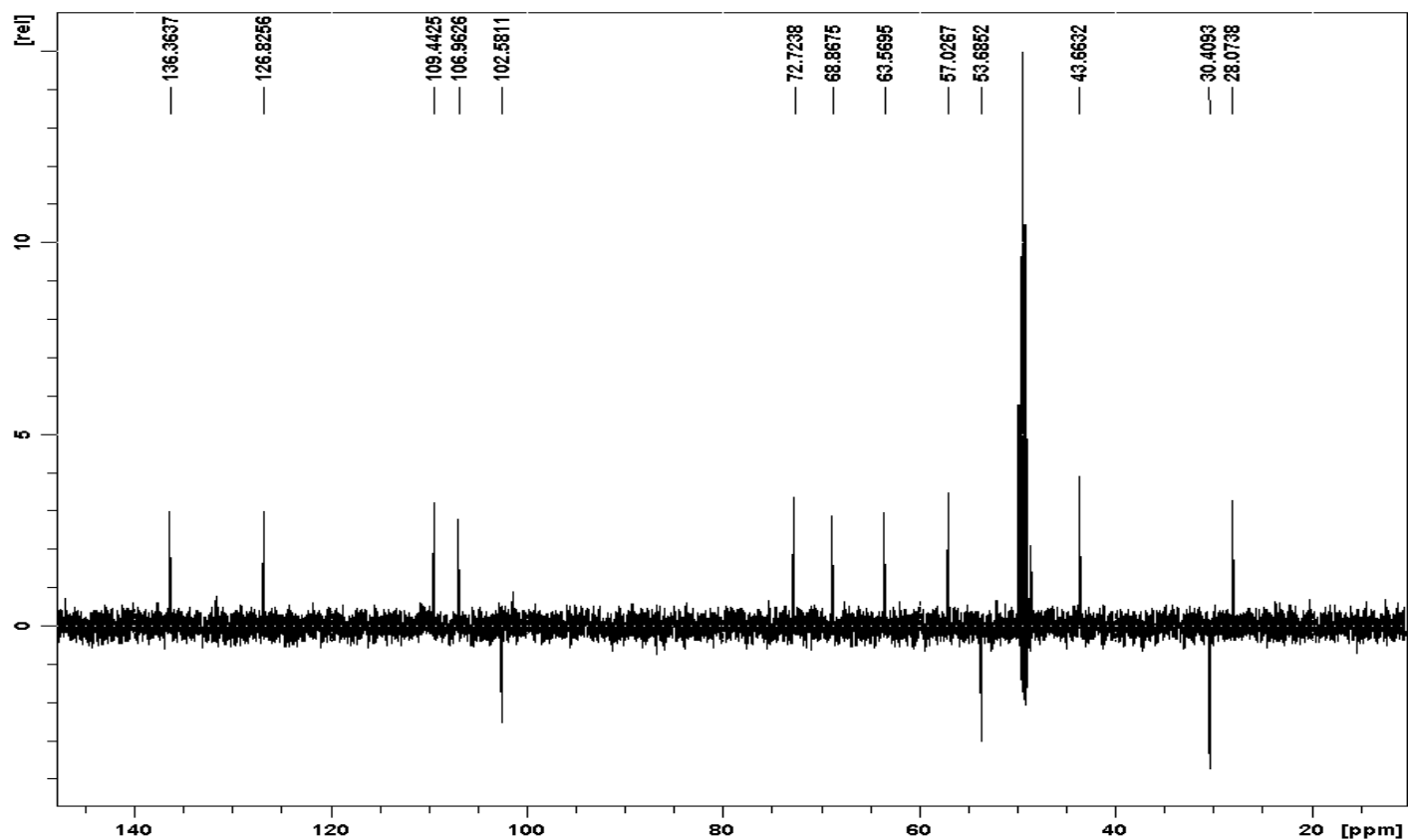


Figure S14. HSQC spectrum of **5** in CD₃OD

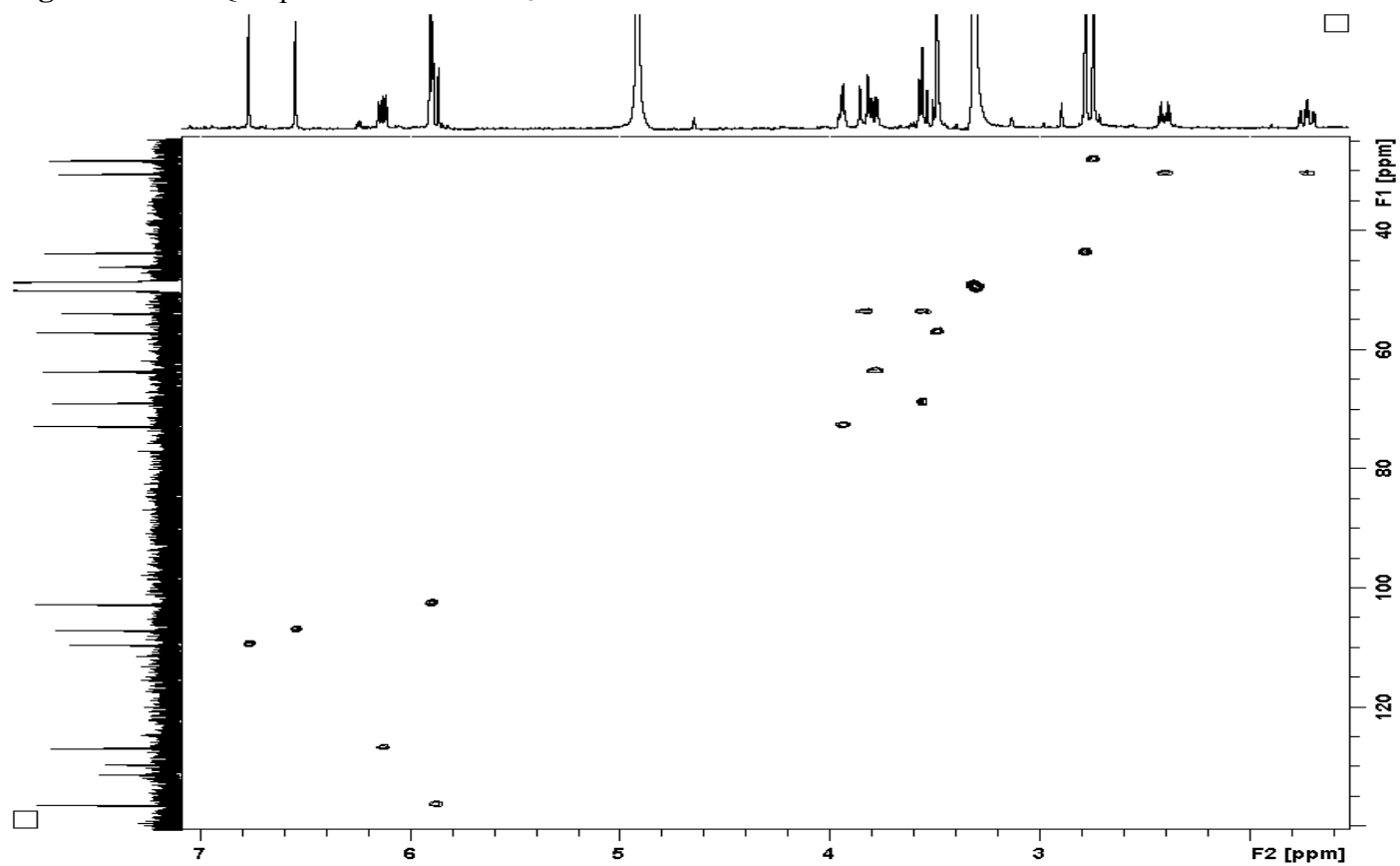


Figure S15. HMBC spectrum of **5** in CD₃OD

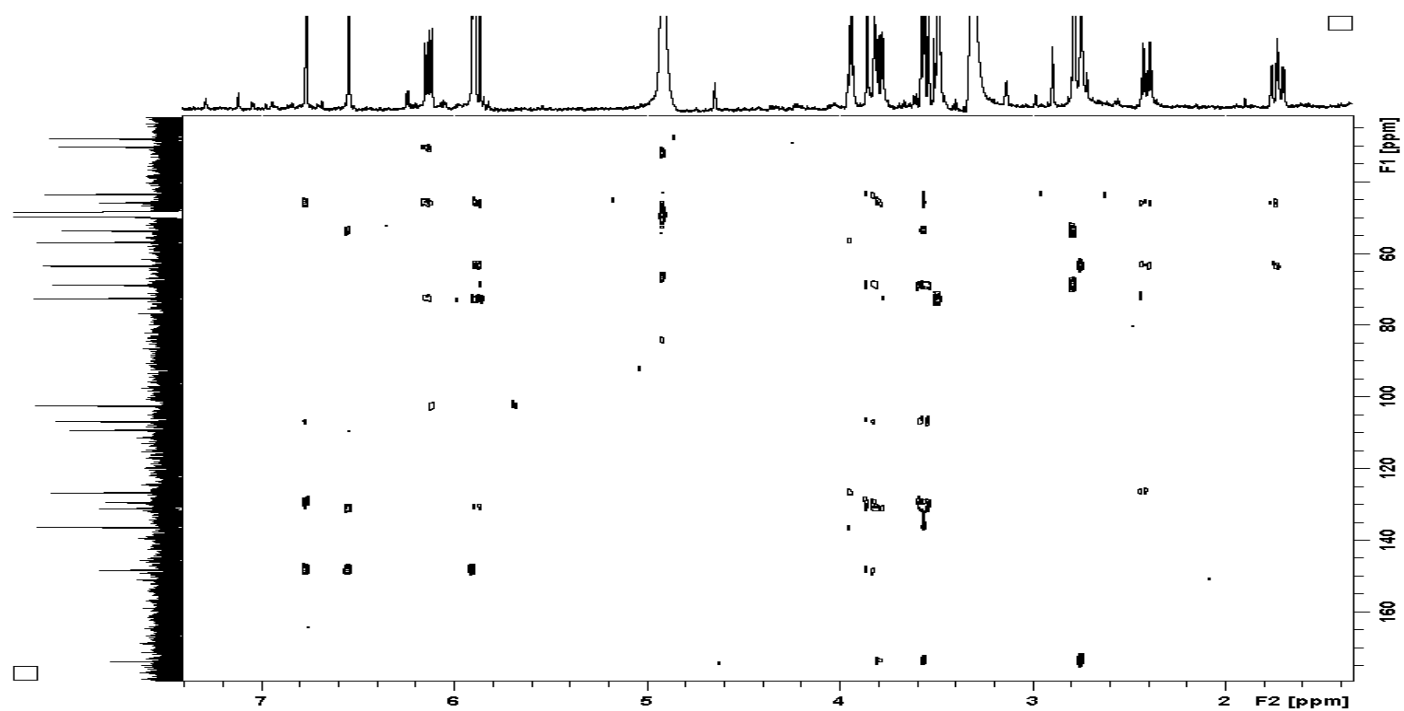


Figure S16. ¹H-¹H COSY spectrum of **5** in CD₃OD

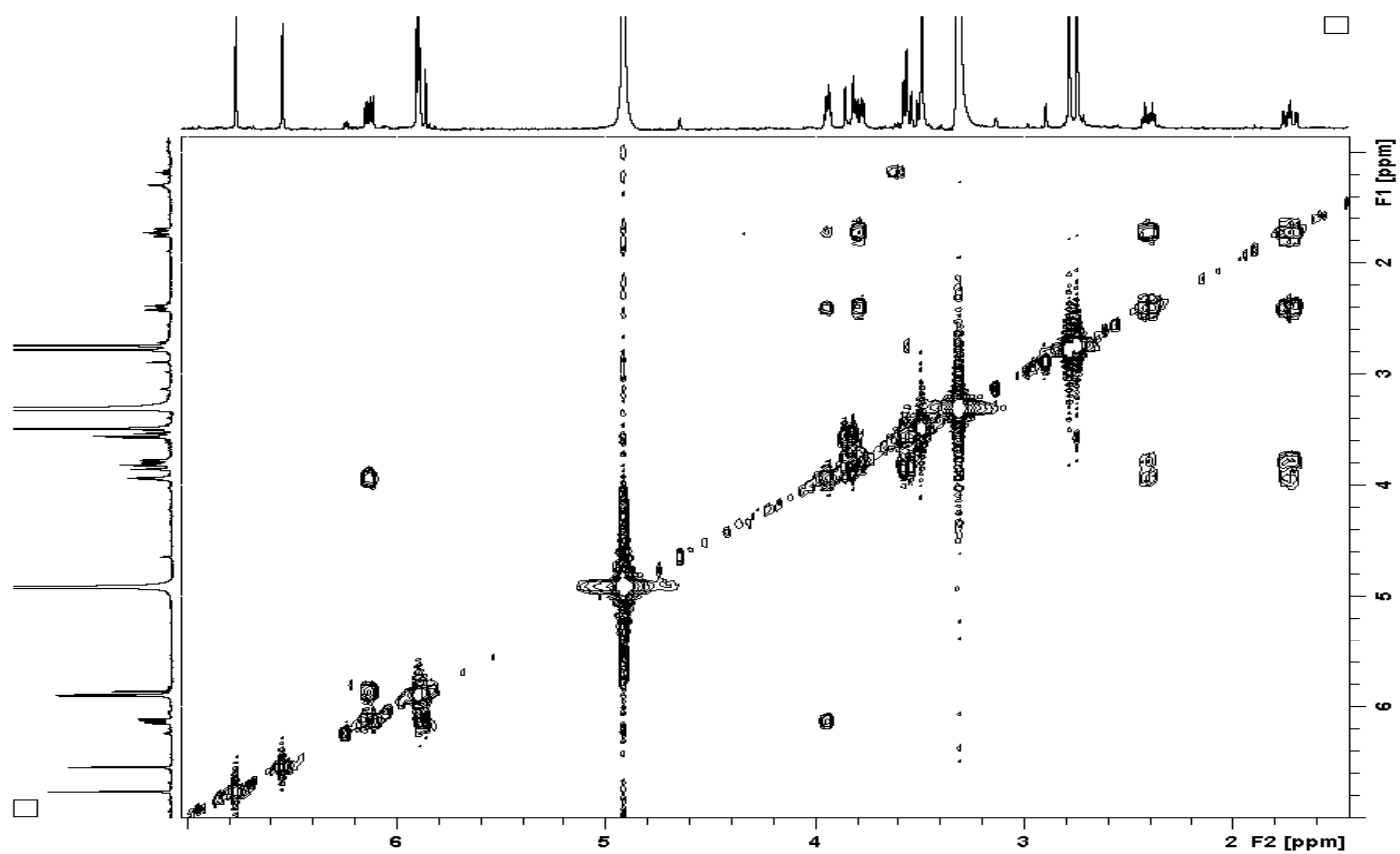


Figure S17. NOESY spectrum of **5** in CD₃OD

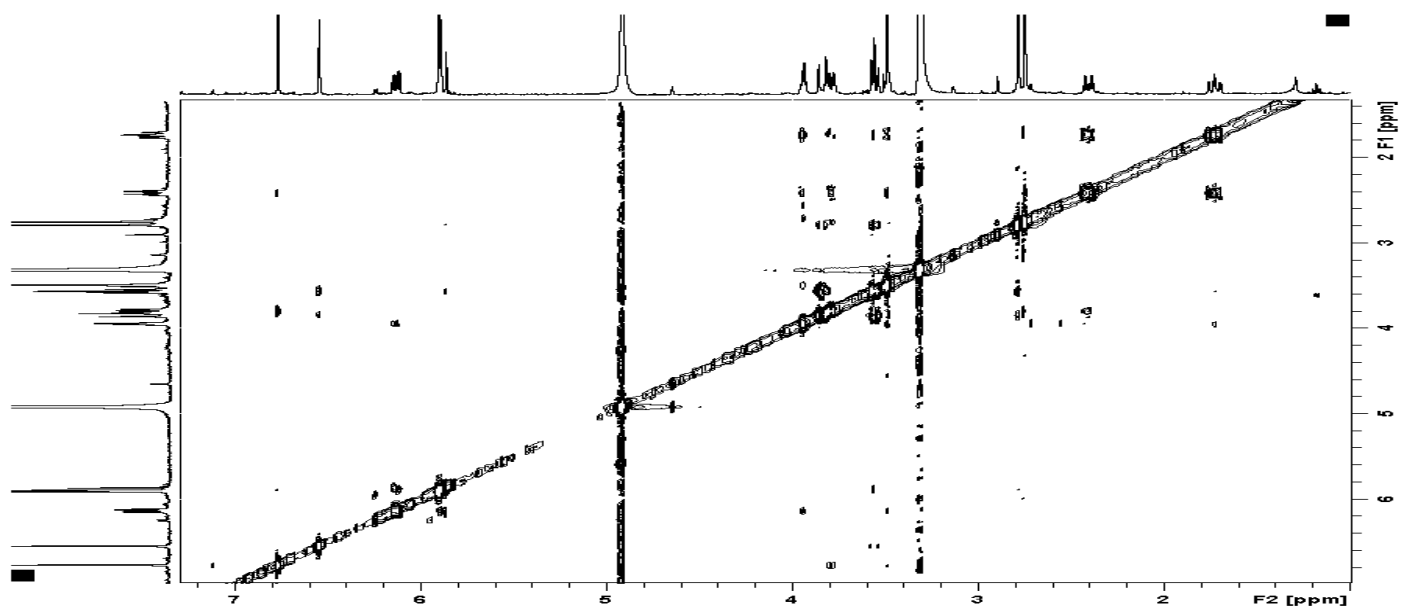


Figure S18. (+)-HR-ESI-MS spectrum of **6**

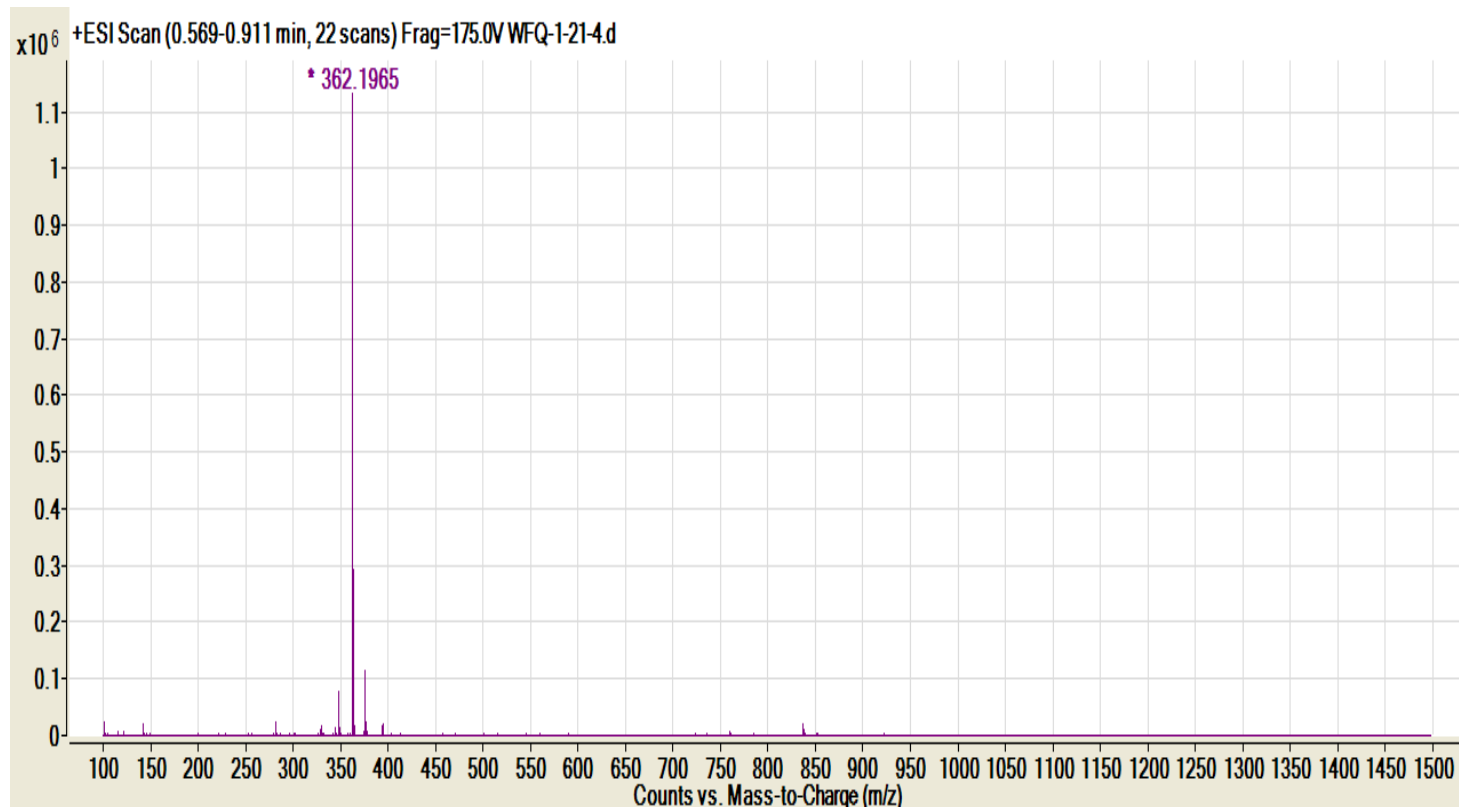


Figure S19. ¹H NMR spectrum (400 MHz) of **6** in CD₃OD

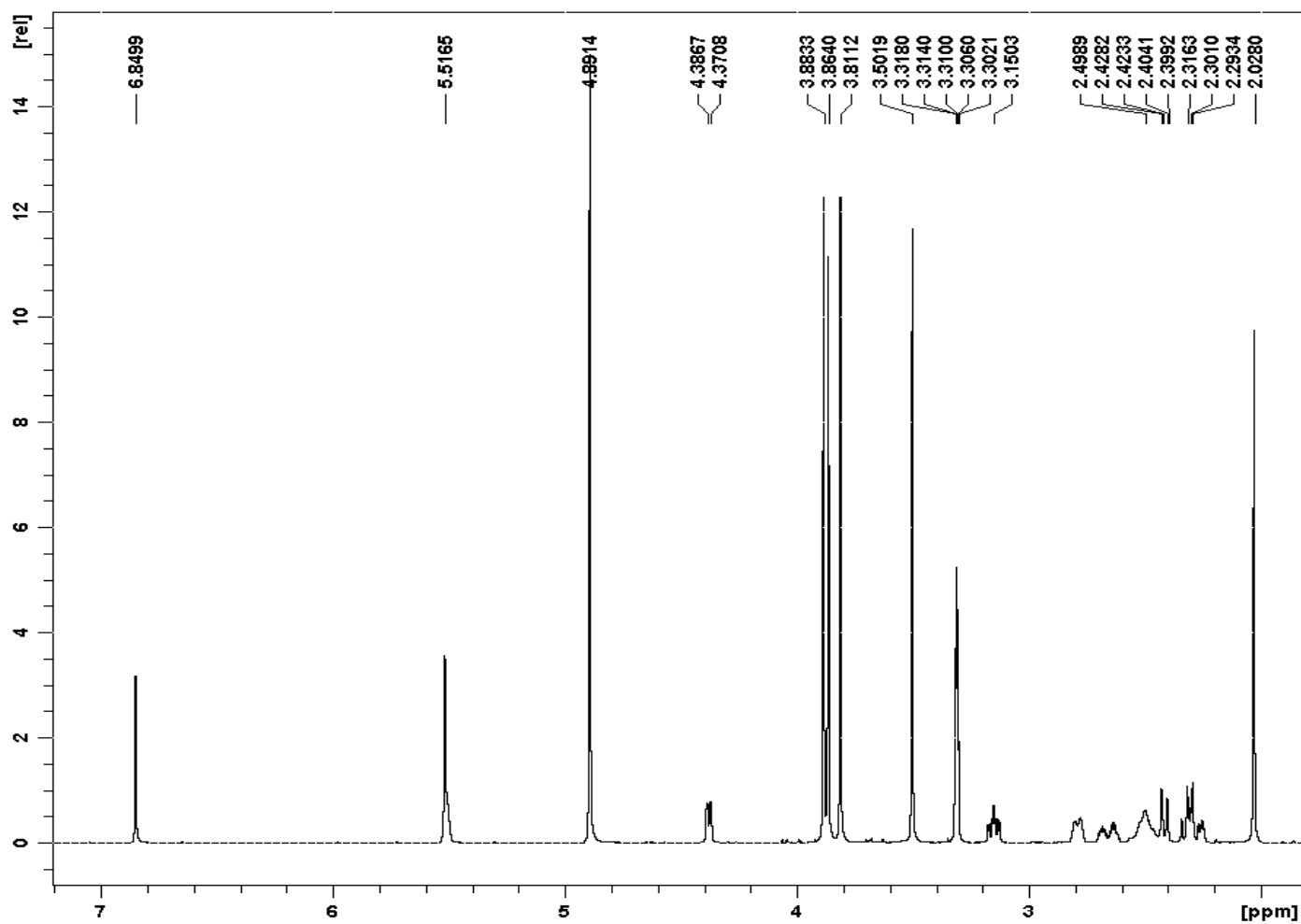


Figure S20. ^{13}C NMR spectrum (100 MHz) of **6** in CD_3OD

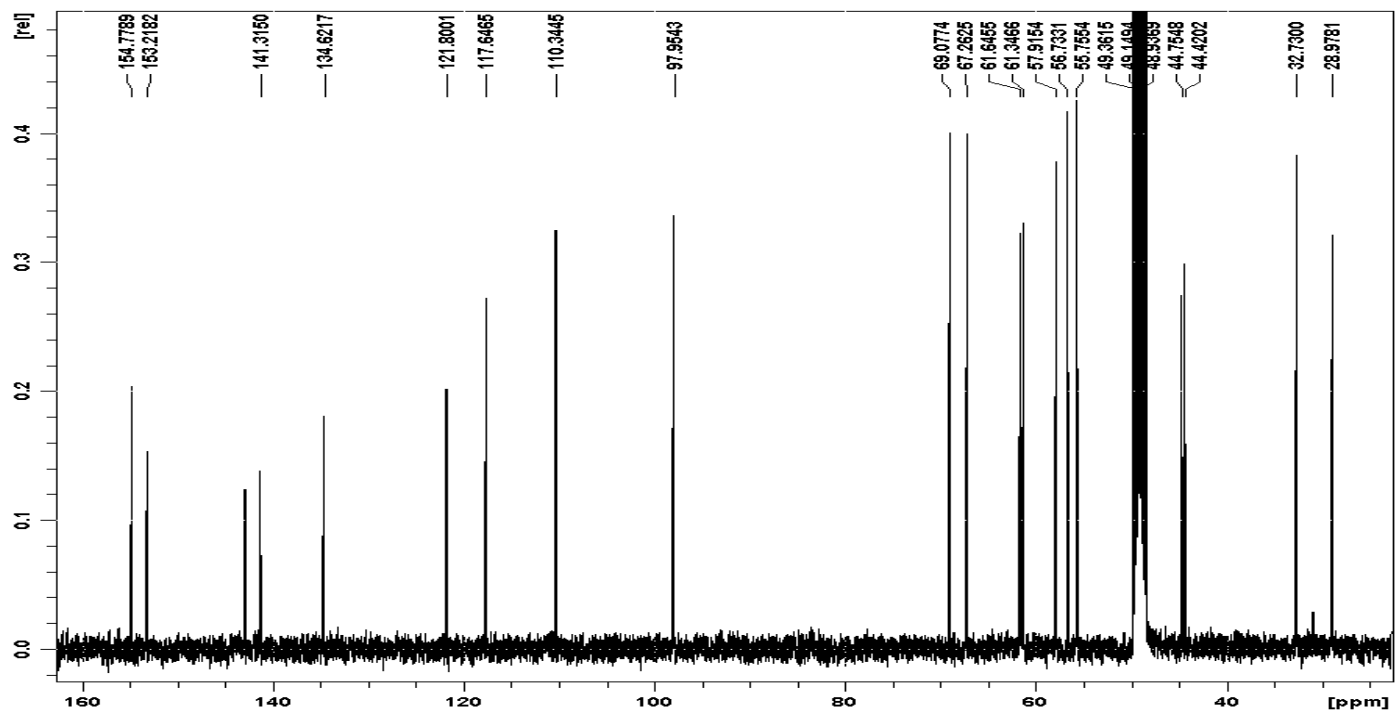


Figure S21. DEPT 135 spectrum of **6** in CD_3OD

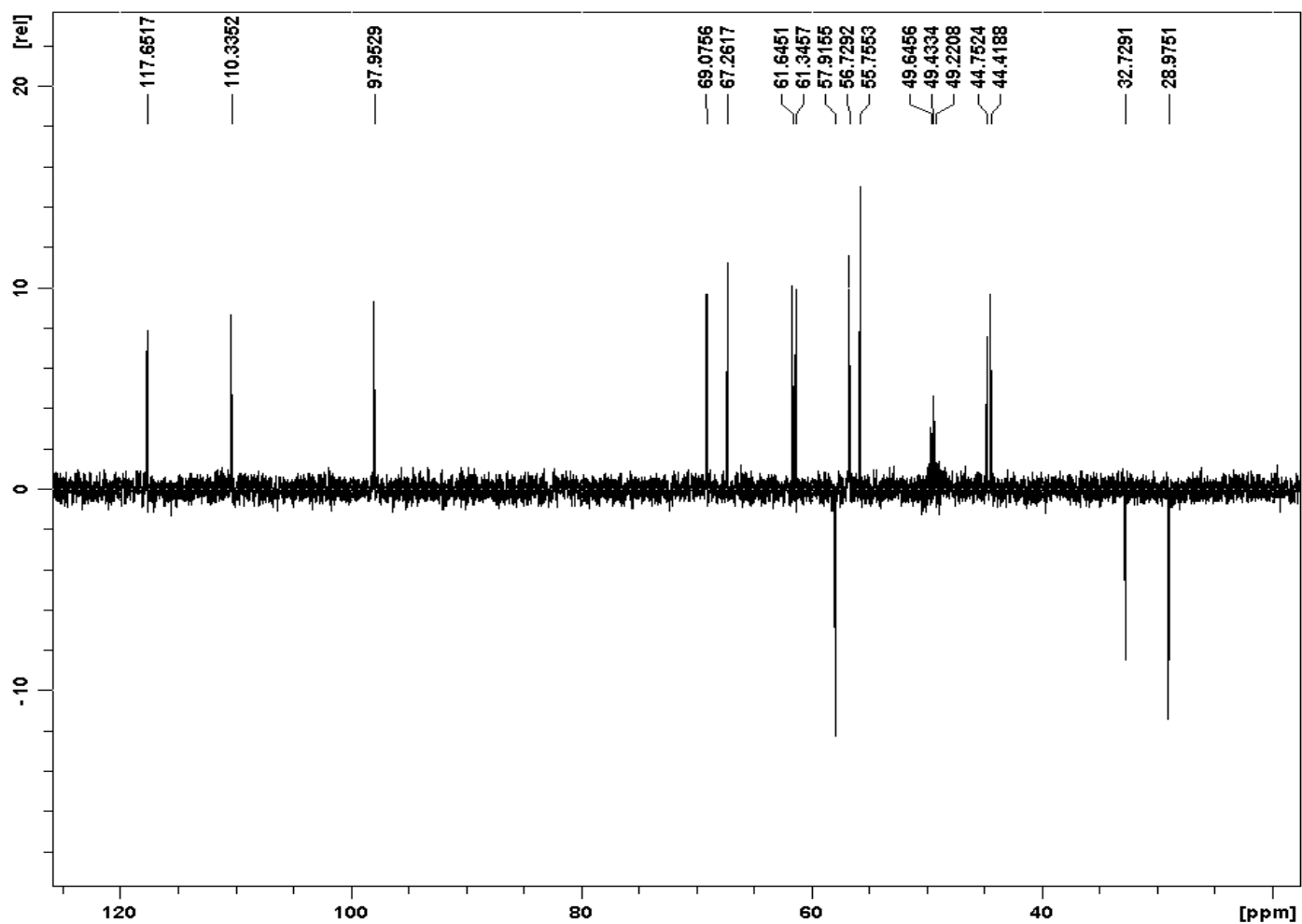


Figure S22. HSQC spectrum of **6** in CD₃OD

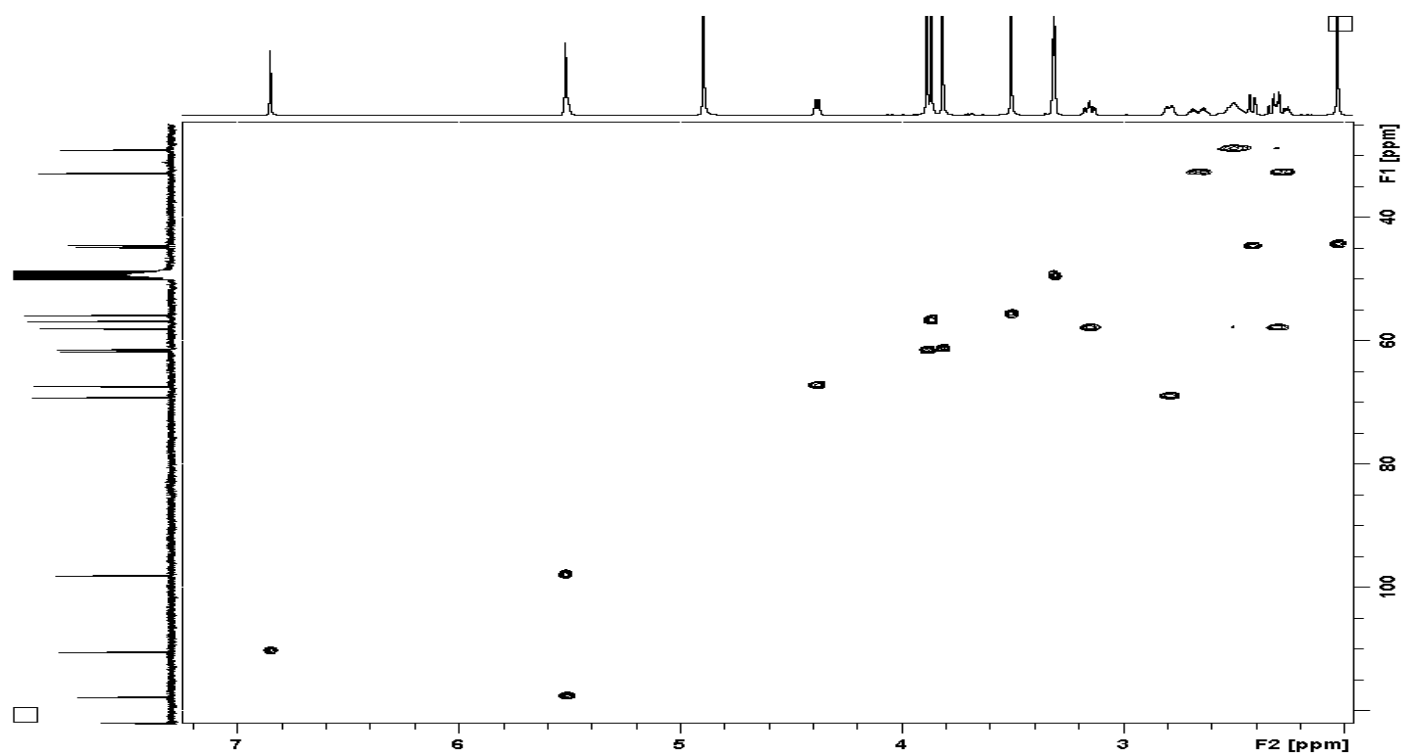


Figure S23. HMBC spectrum of **6** in CD₃OD

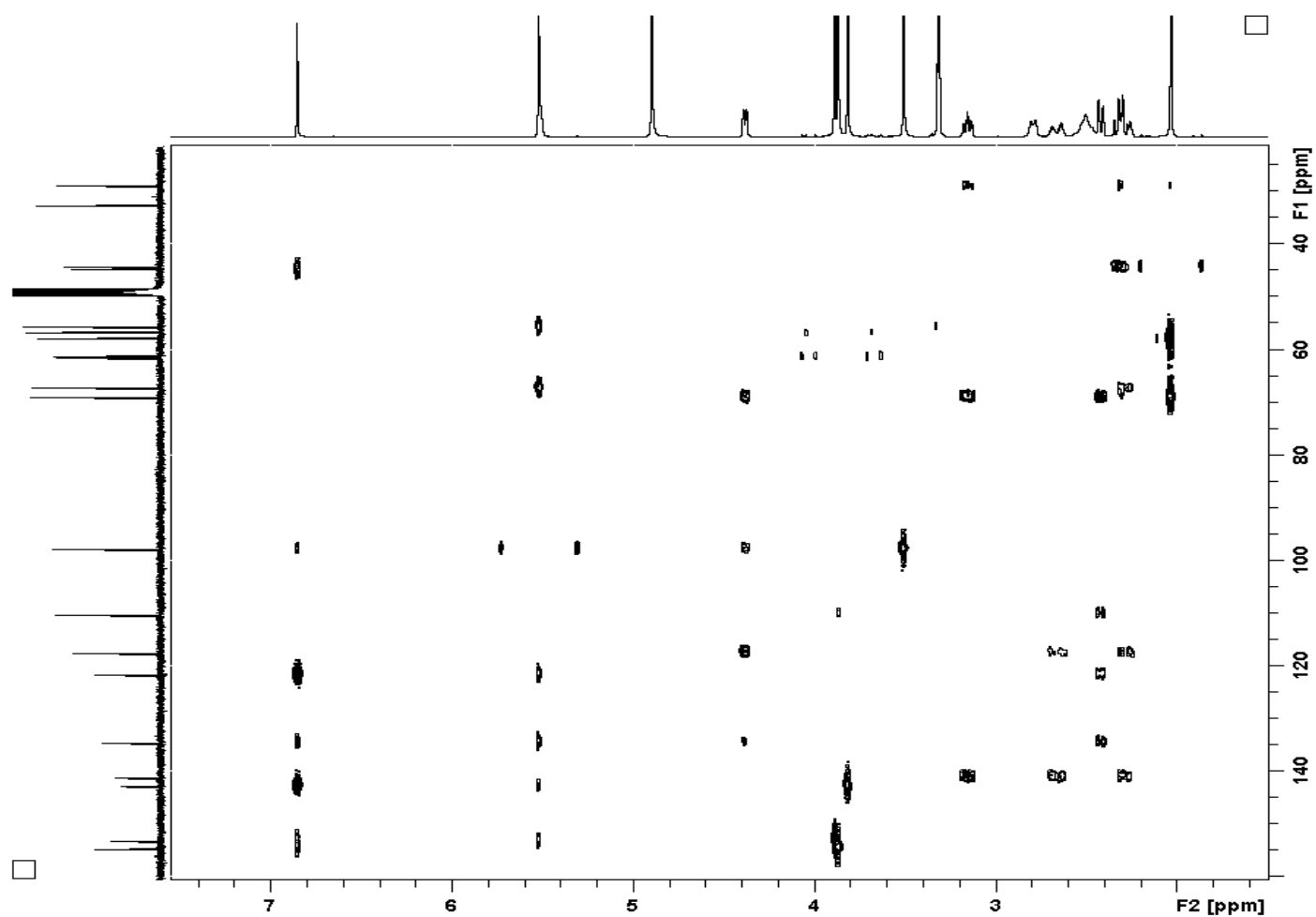


Figure S24 ^1H - ^1H COSY spectrum of **6** in CD_3OD

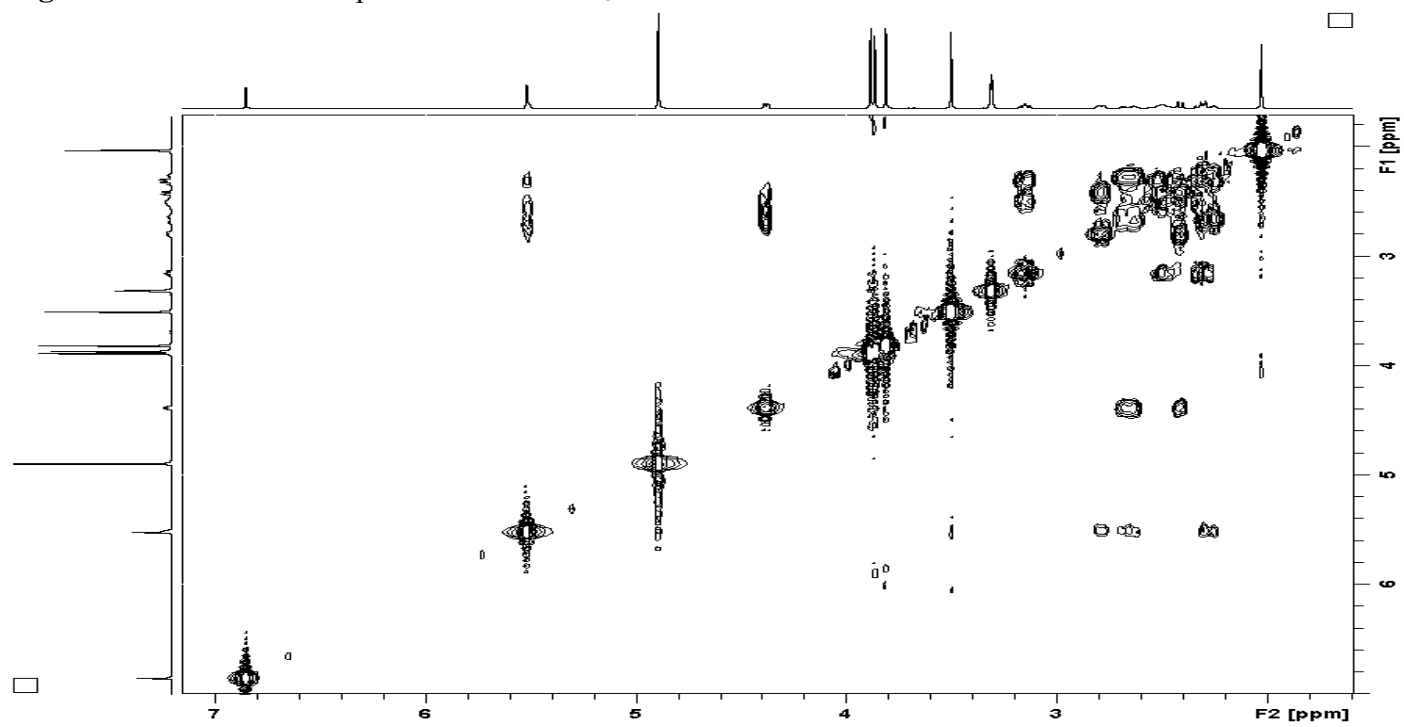


Figure S25. NOESY spectrum of **6** in CD_3OD

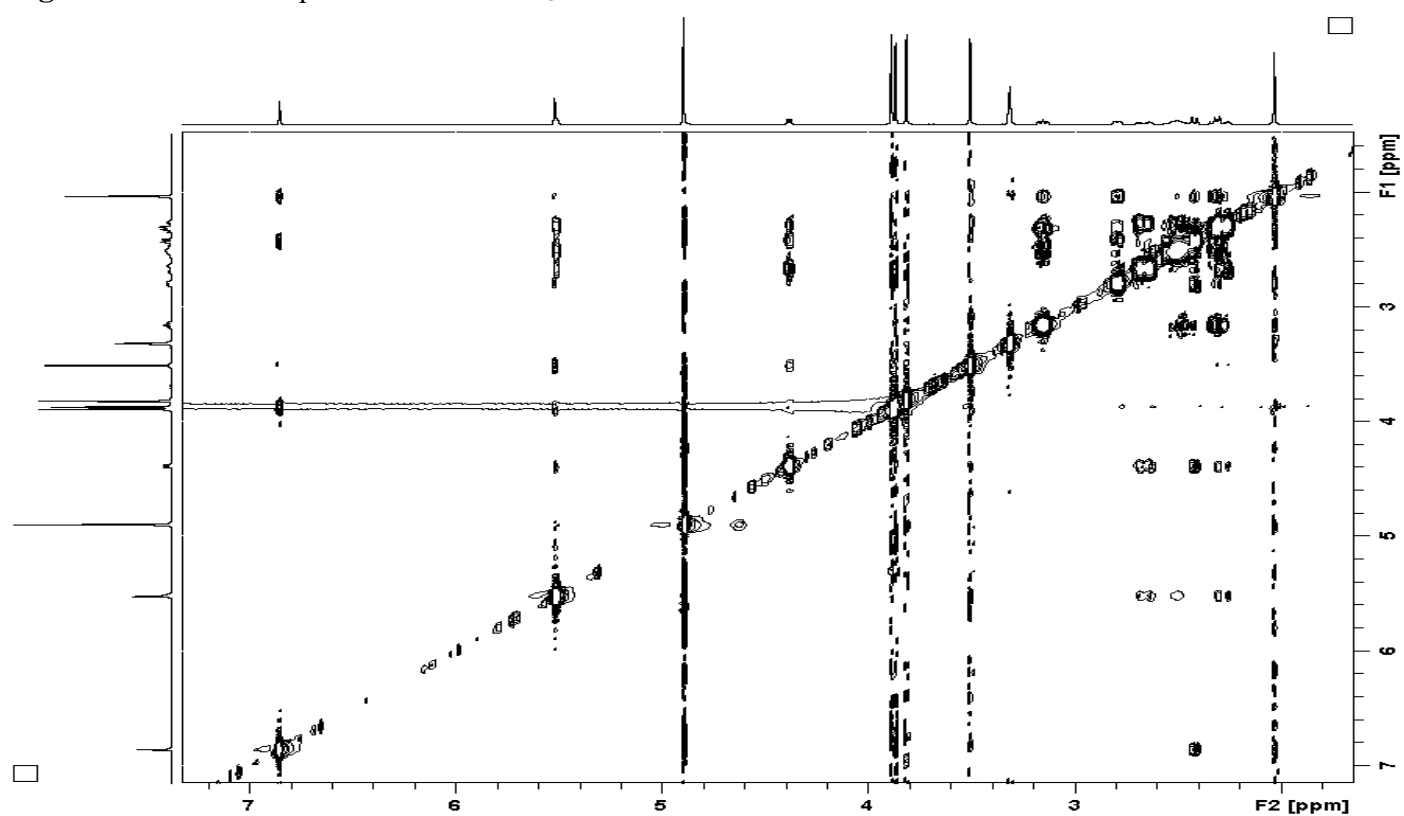


Figure S26. (+)-HR-ESI-MS spectrum of **7**

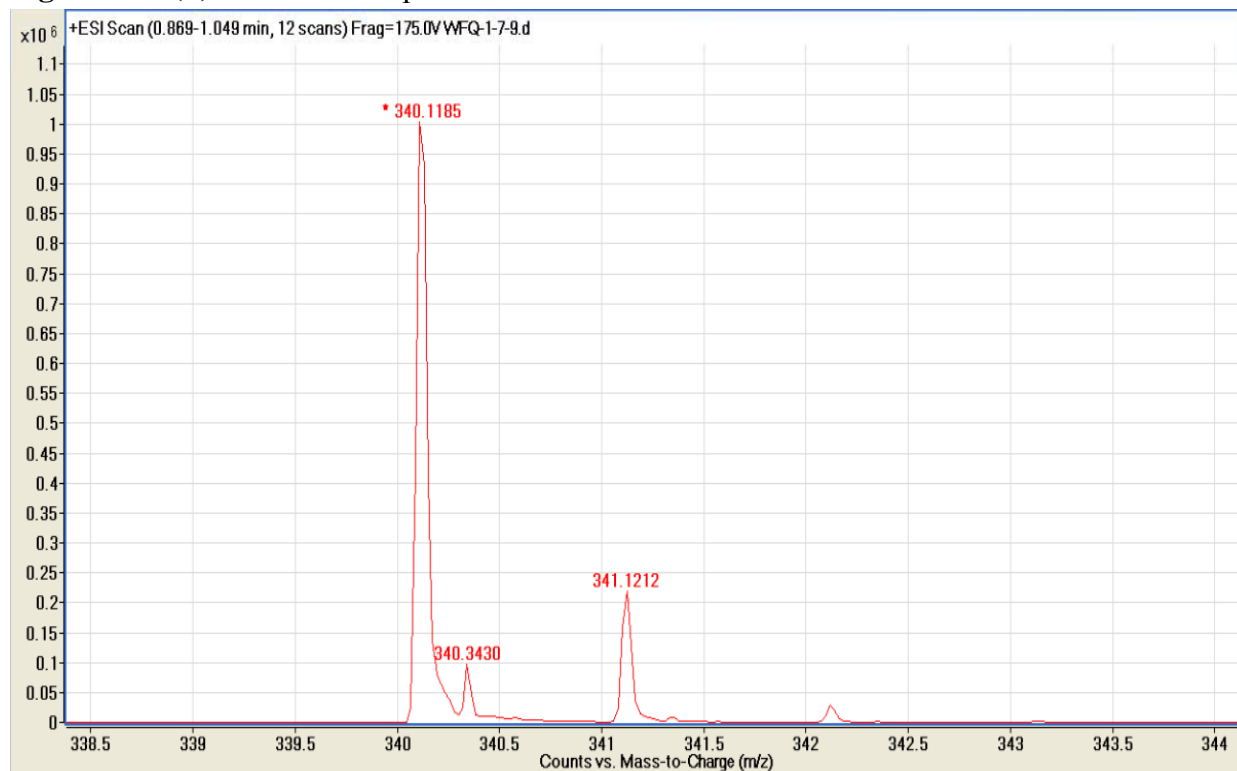


Figure S27. ^1H NMR spectrum (400 MHz) of **7** in CDCl_3

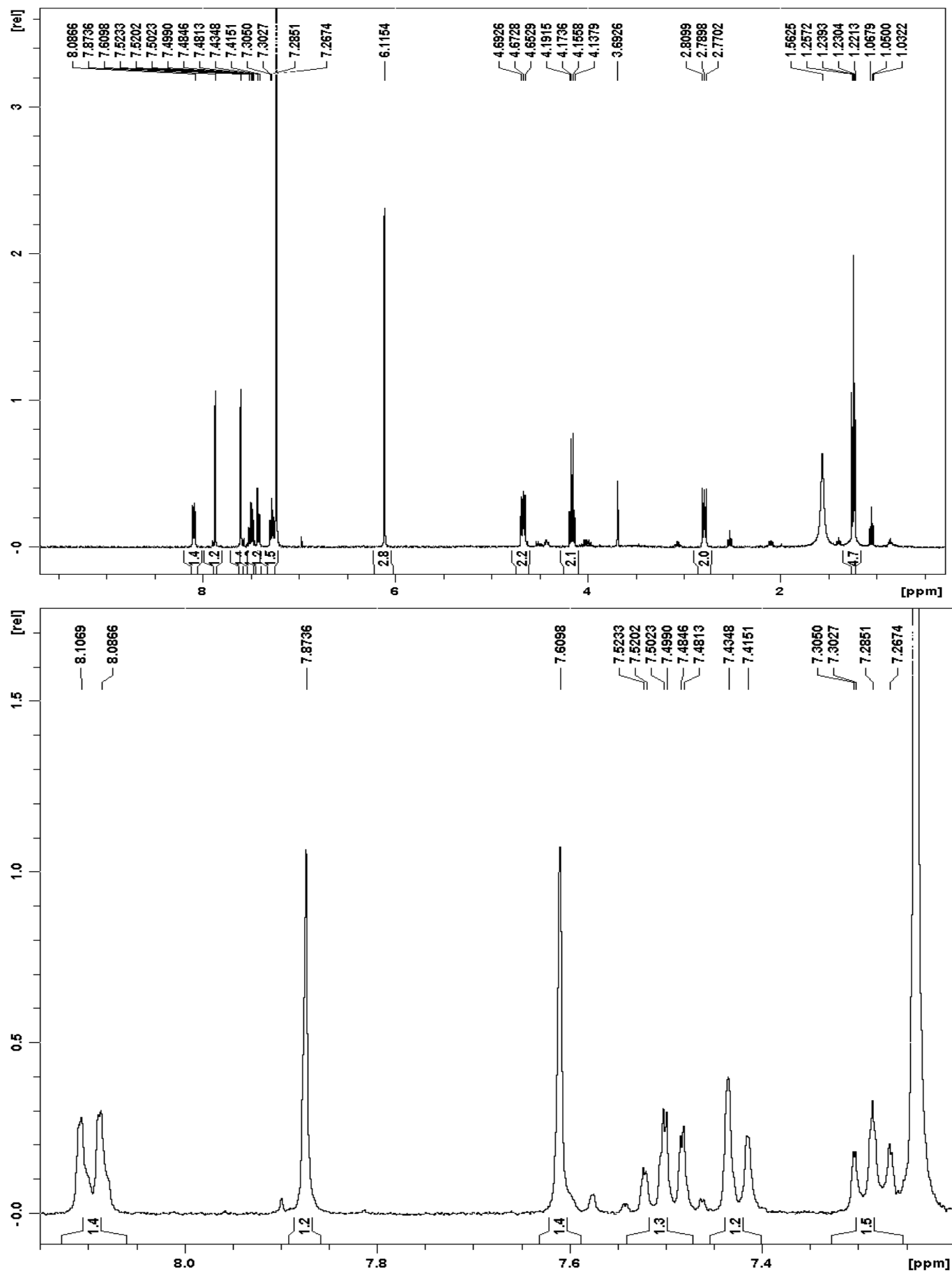


Figure S28. ^{13}C NMR spectrum (100 MHz) of **7** in CDCl_3

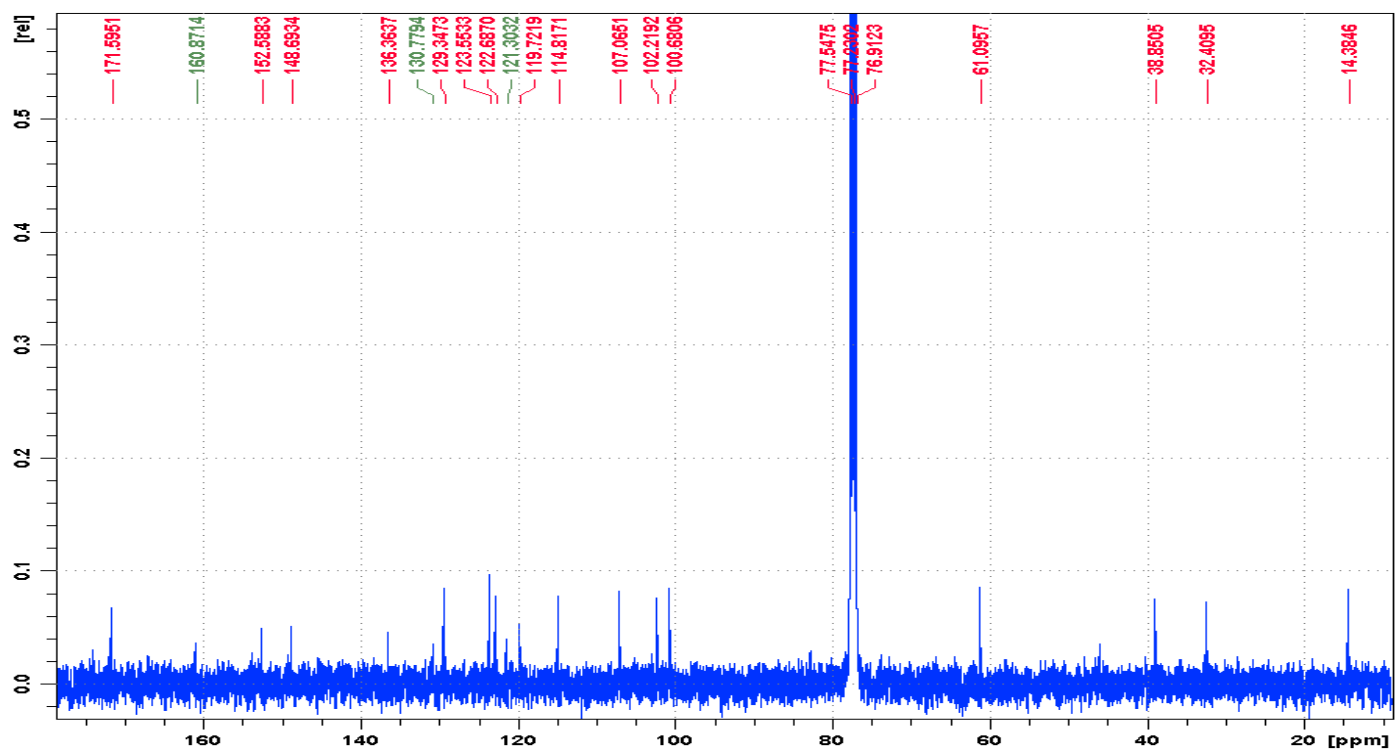


Figure S29. DEPT 135 spectrum of **7** in CDCl_3

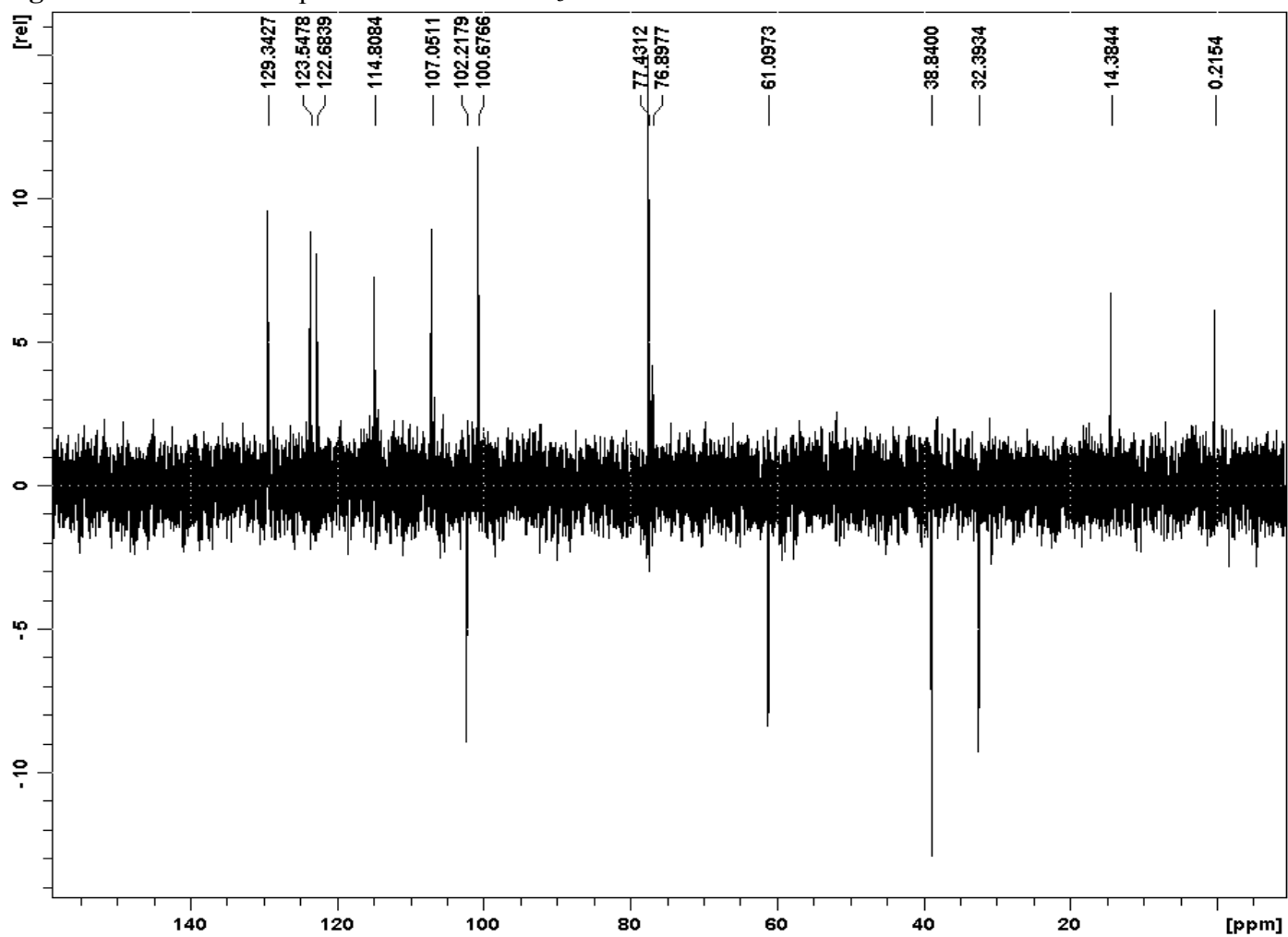


Figure S30. HSQC spectrum of **7** in CDCl₃

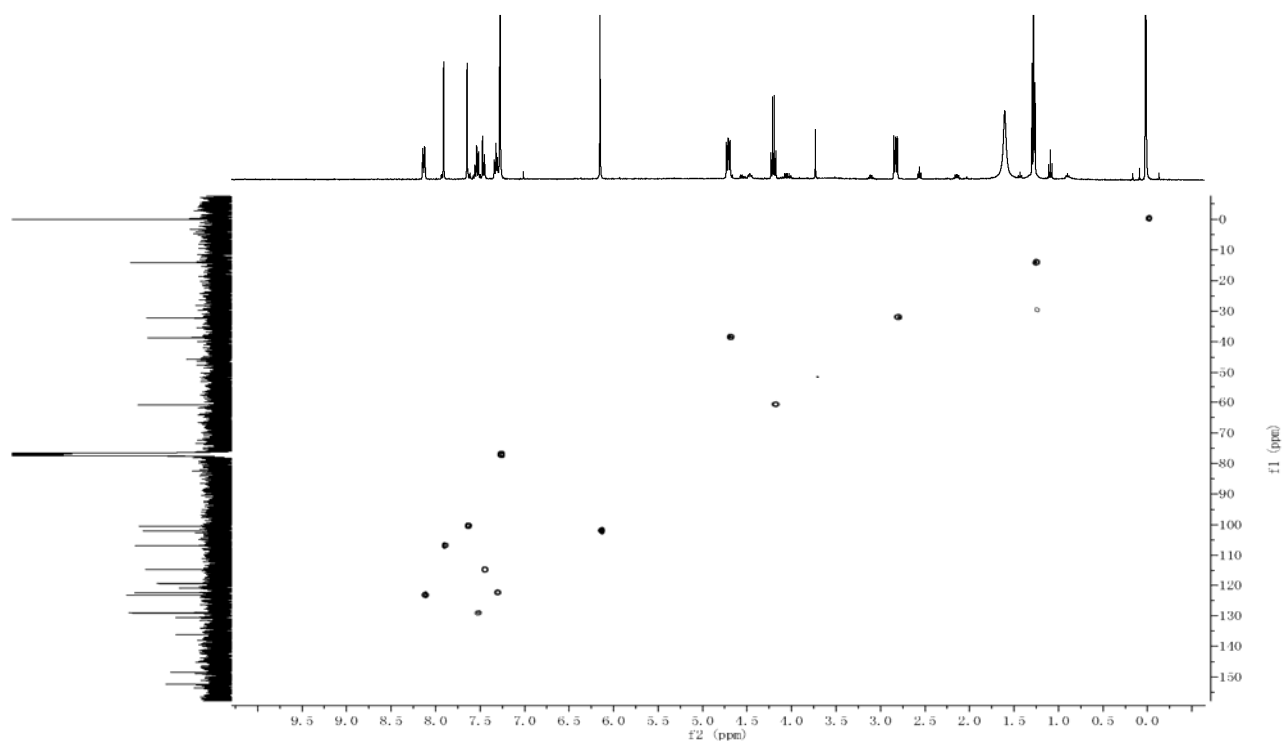


Figure S31. HMBC spectrum of **7** in CDCl₃D

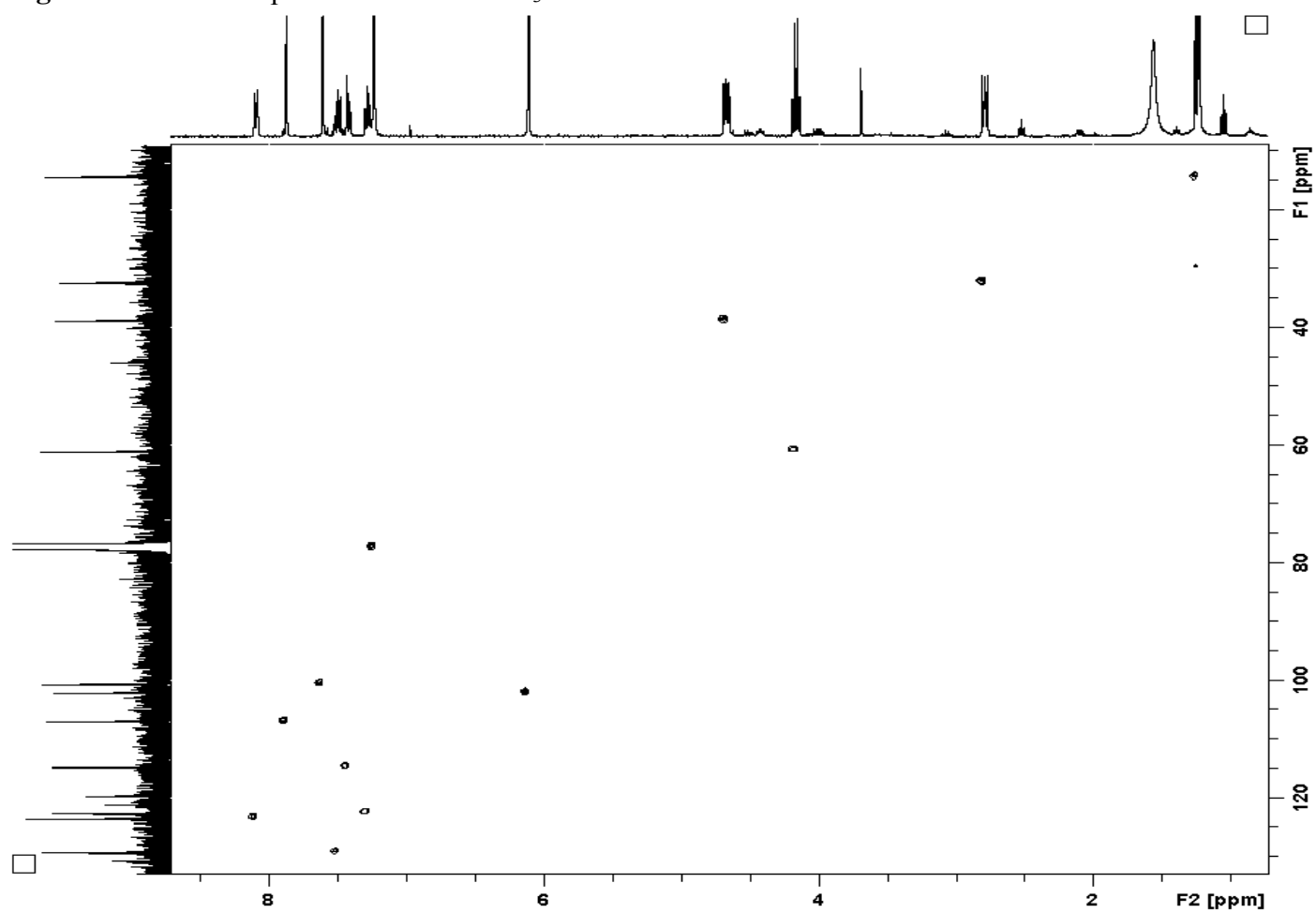


Figure S32. ^1H - ^1H COSY spectrum of 7 in CDCl_3

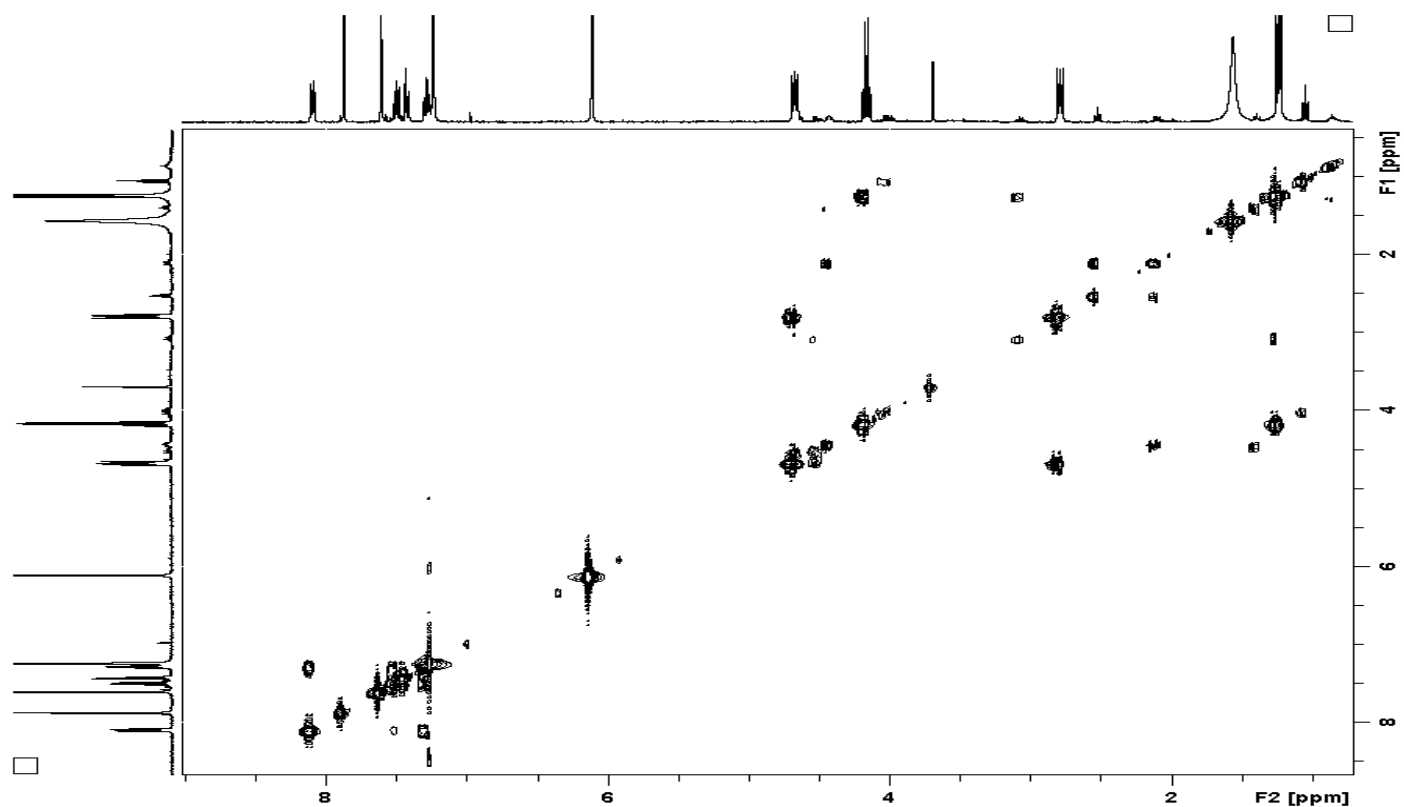


Figure S33. (+)-HR-ESI-MS spectrum of 8

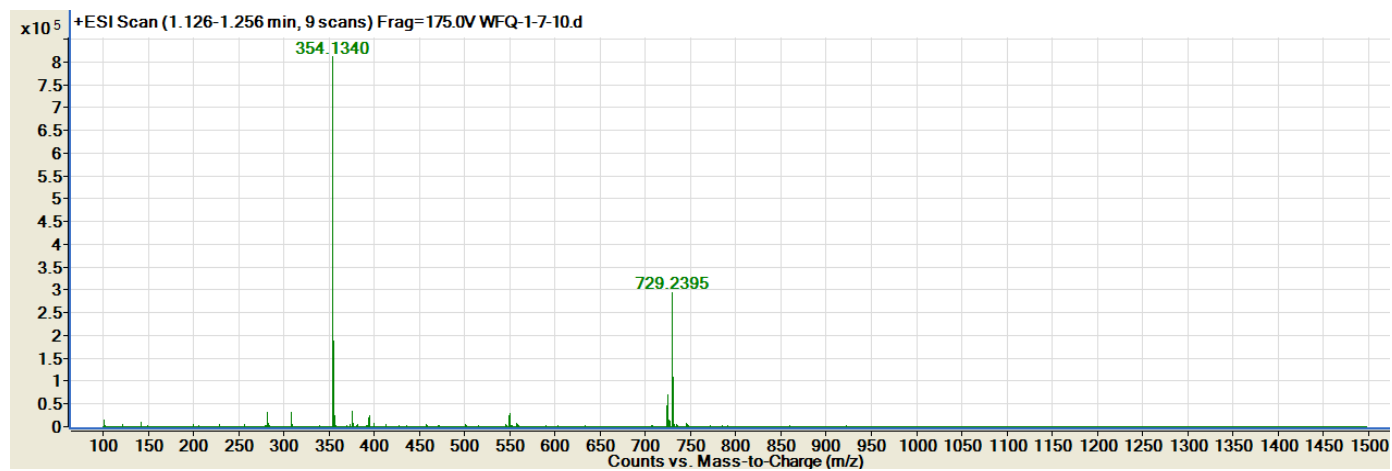


Figure S34. ^1H NMR spectrum (400 MHz) of **8** in CDCl_3

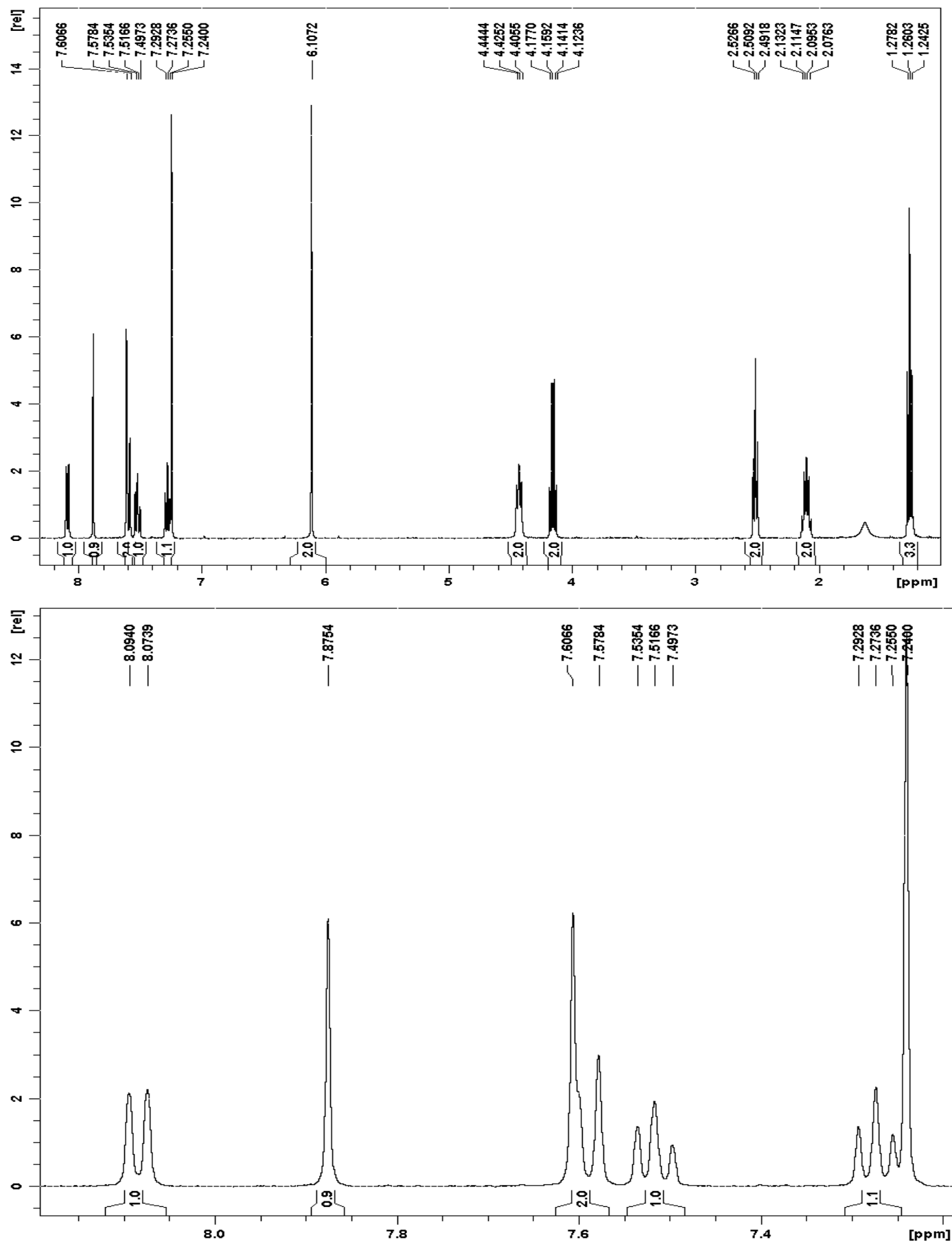


Figure S35. ^{13}C NMR spectrum (100 MHz) of **8** in CDCl_3

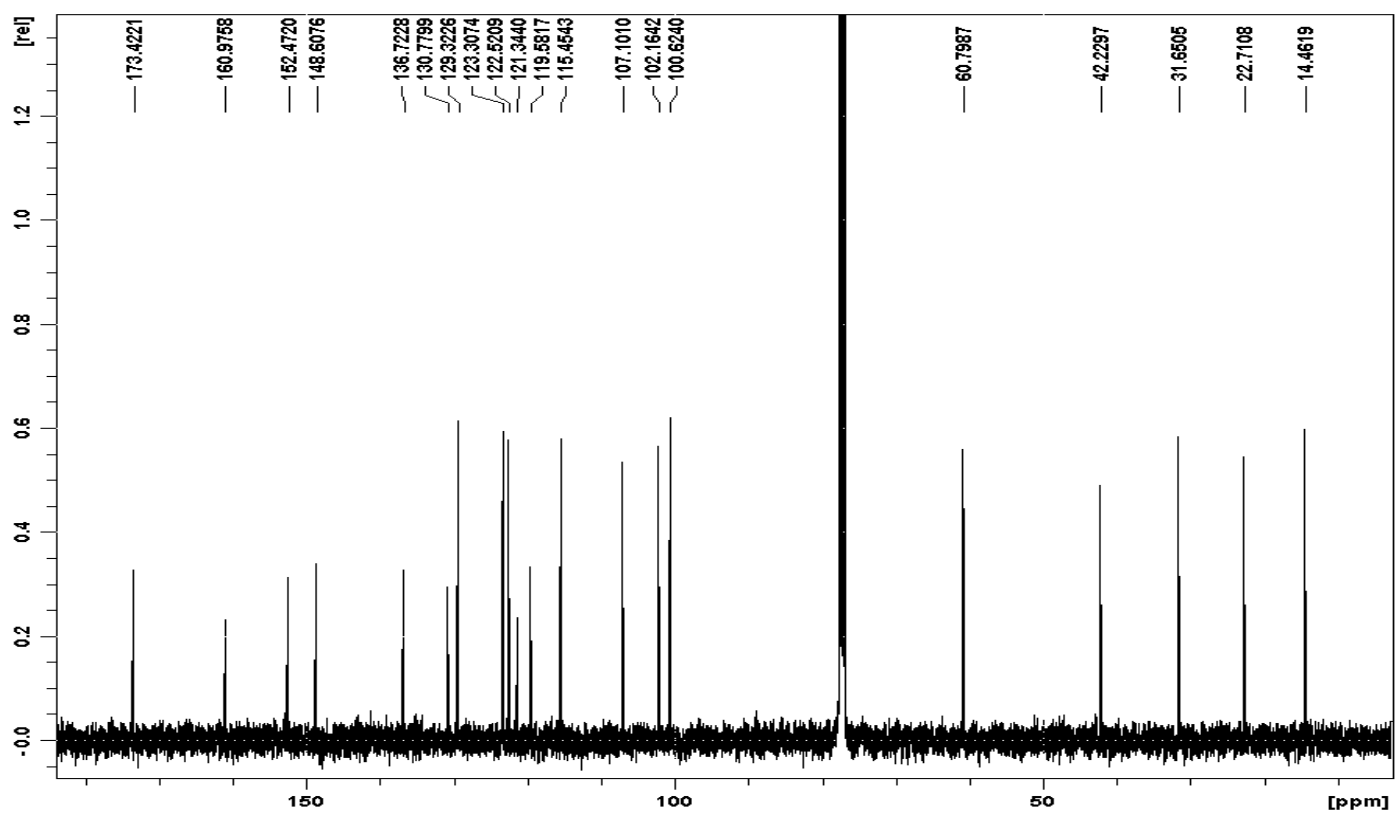


Figure S36. DEPT 135 spectrum of **8** in CDCl_3

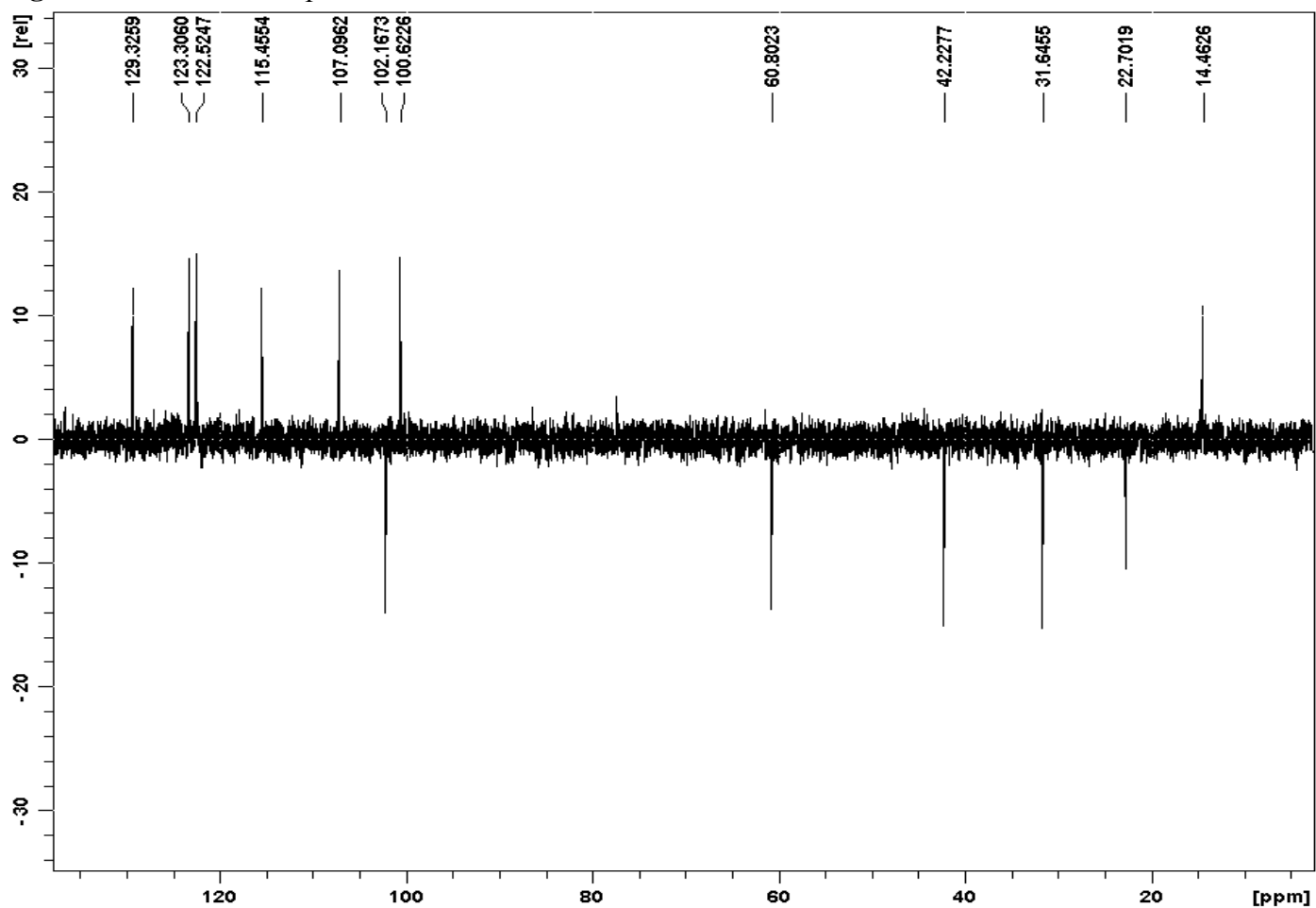


Figure S37. HSQC spectrum of **8** in CDCl₃

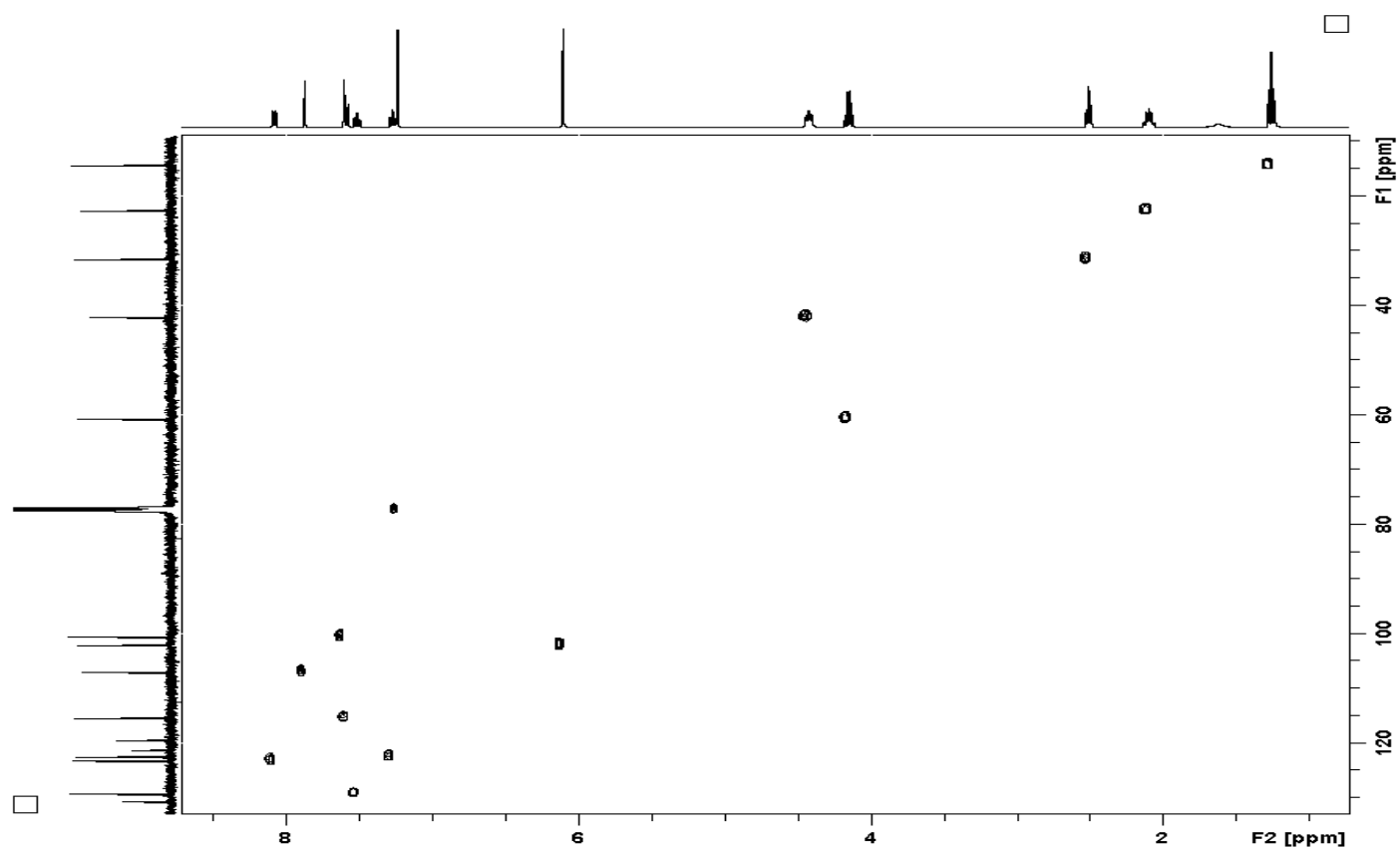


Figure S38. HMBC spectrum of **8** in CDCl₃

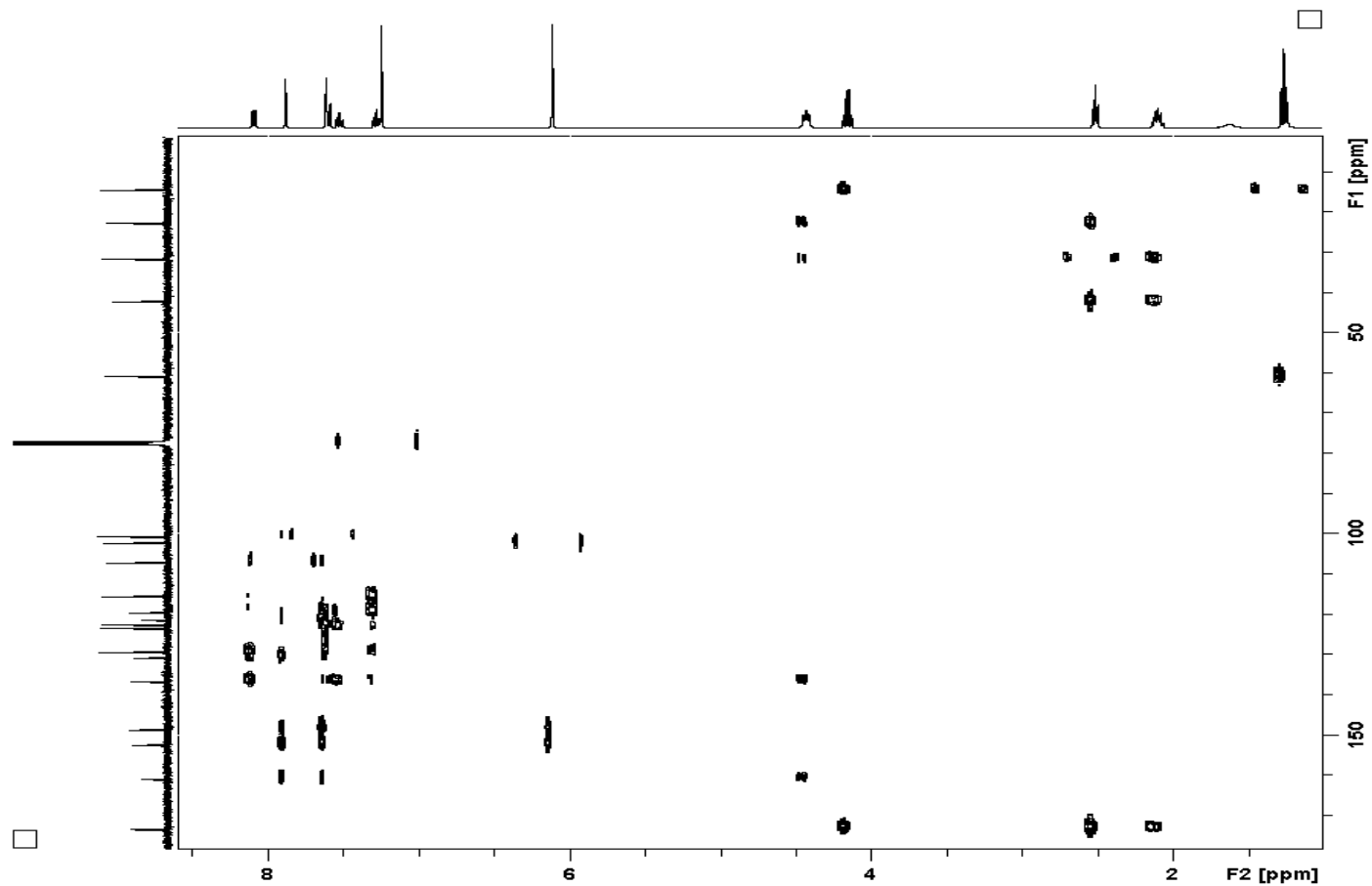


Figure S39. ^1H - ^1H COSY spectrum of **8** in CDCl_3

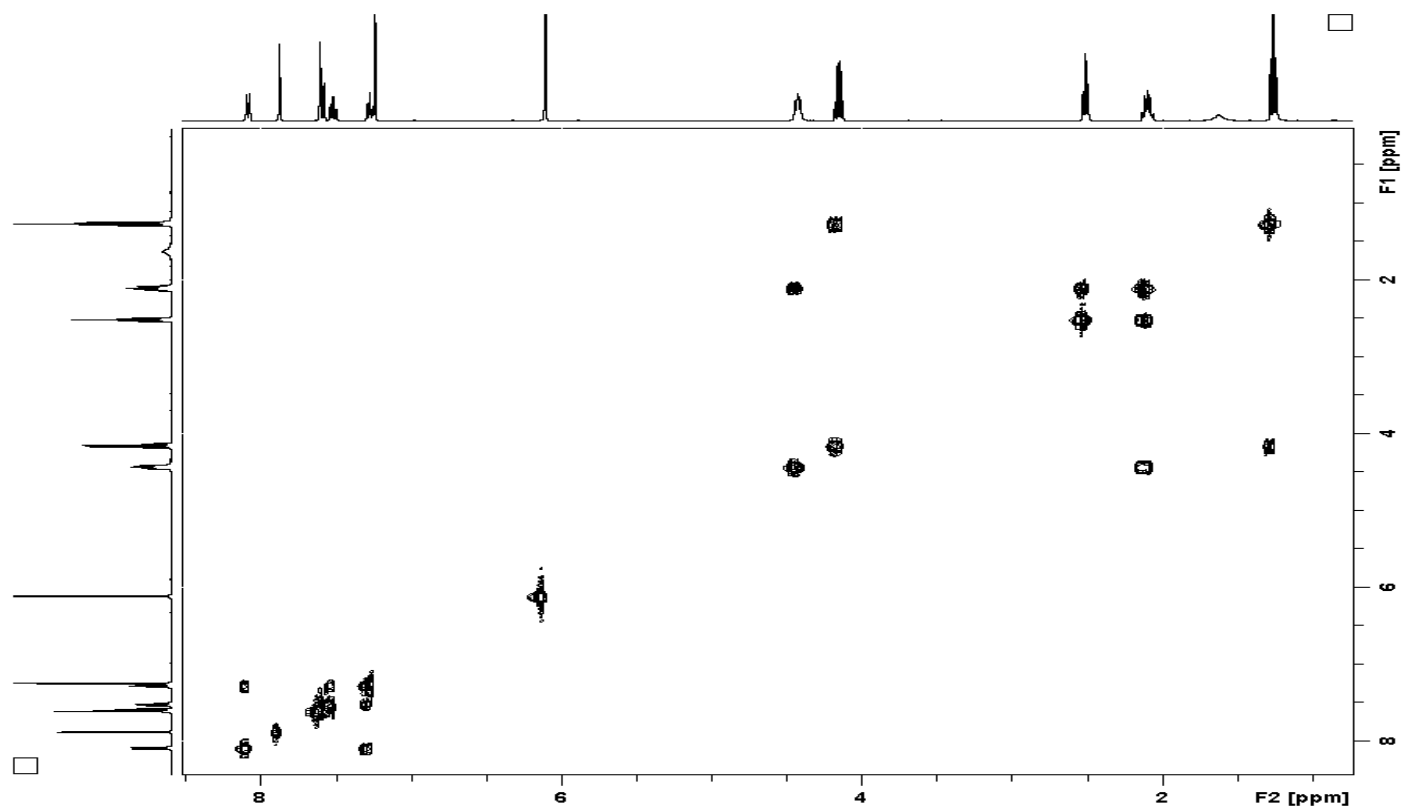


Figure S40. (+)-HR-ESI-MS spectrum of **9**

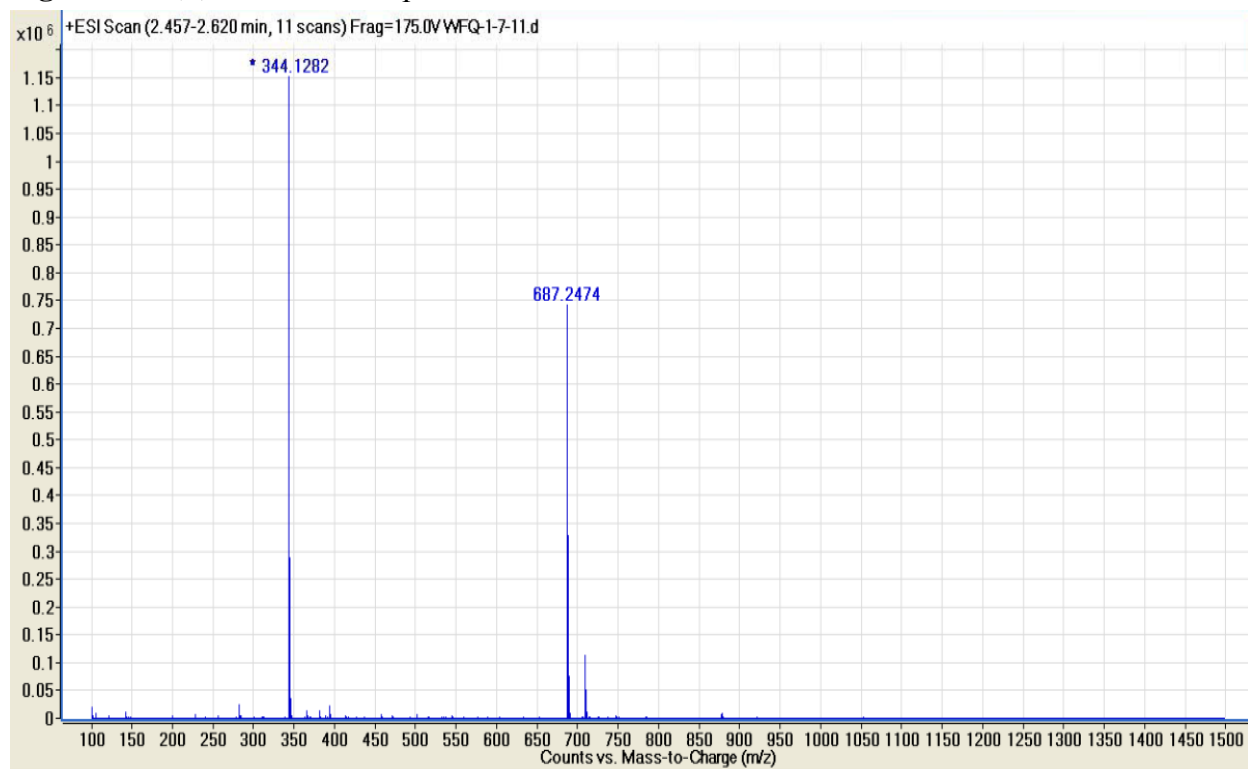


Figure S41. ¹H NMR spectrum (400 MHz) of **9** in CDCl₃

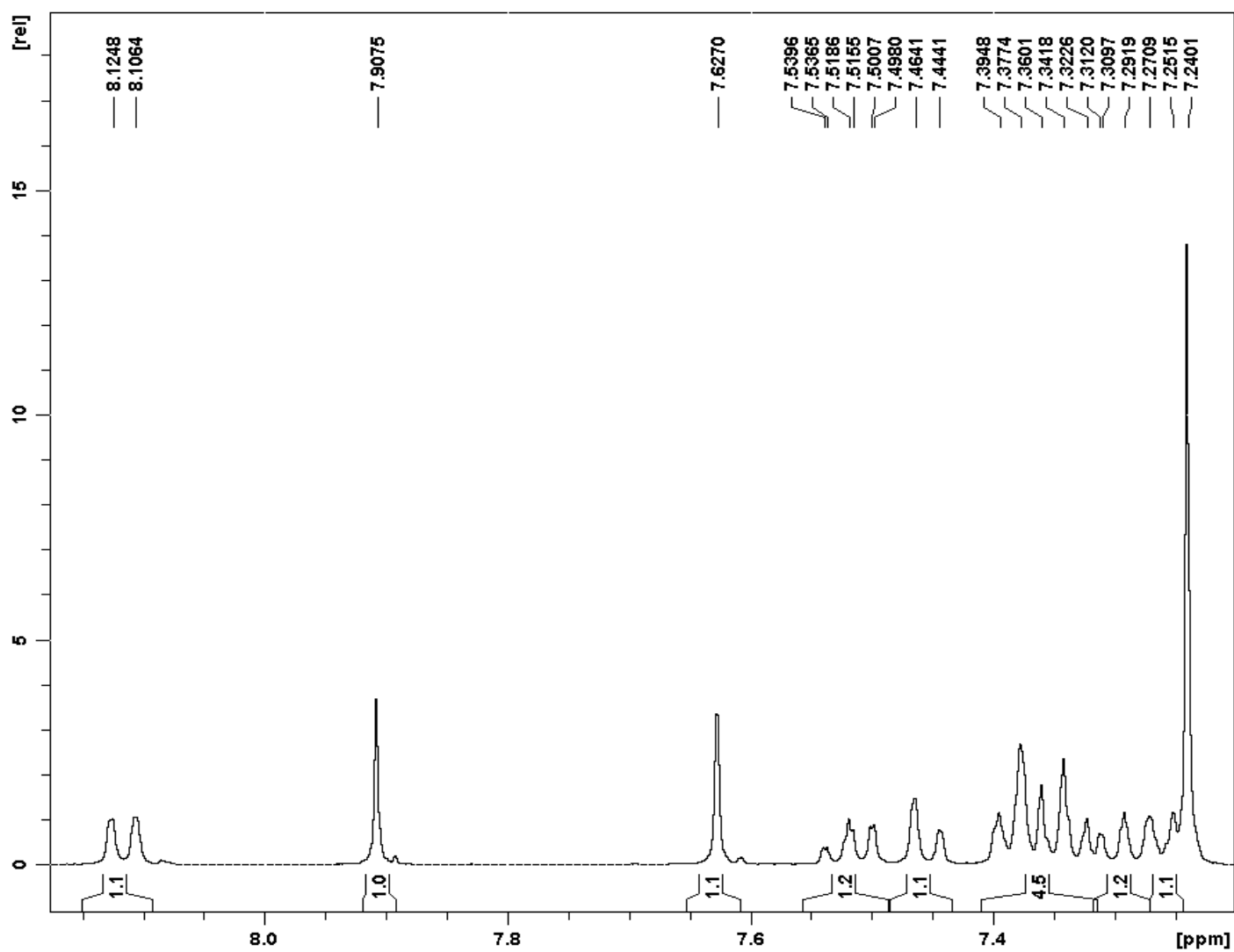
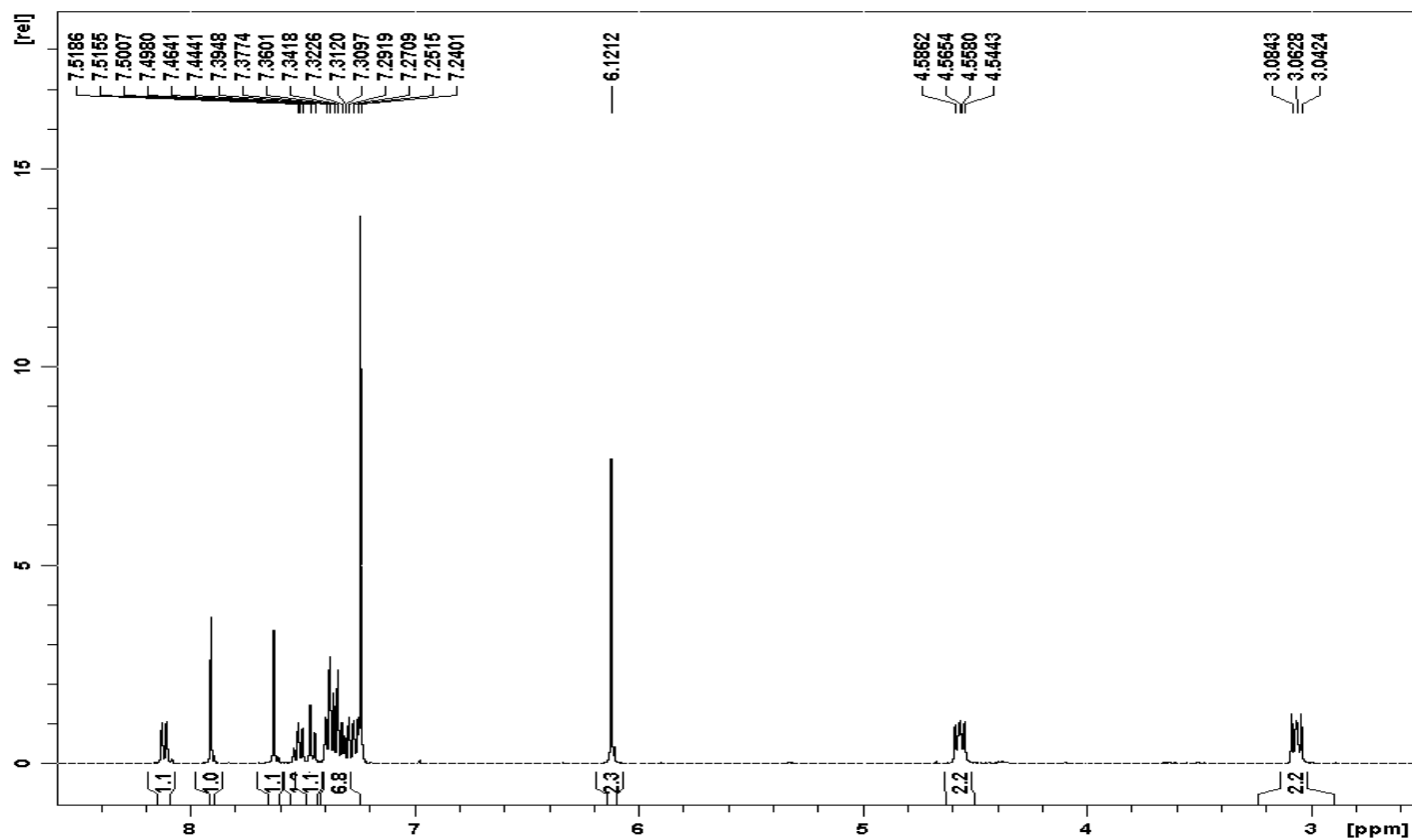


Figure S42. ^{13}C NMR spectrum (100 MHz) of **9** in CDCl_3

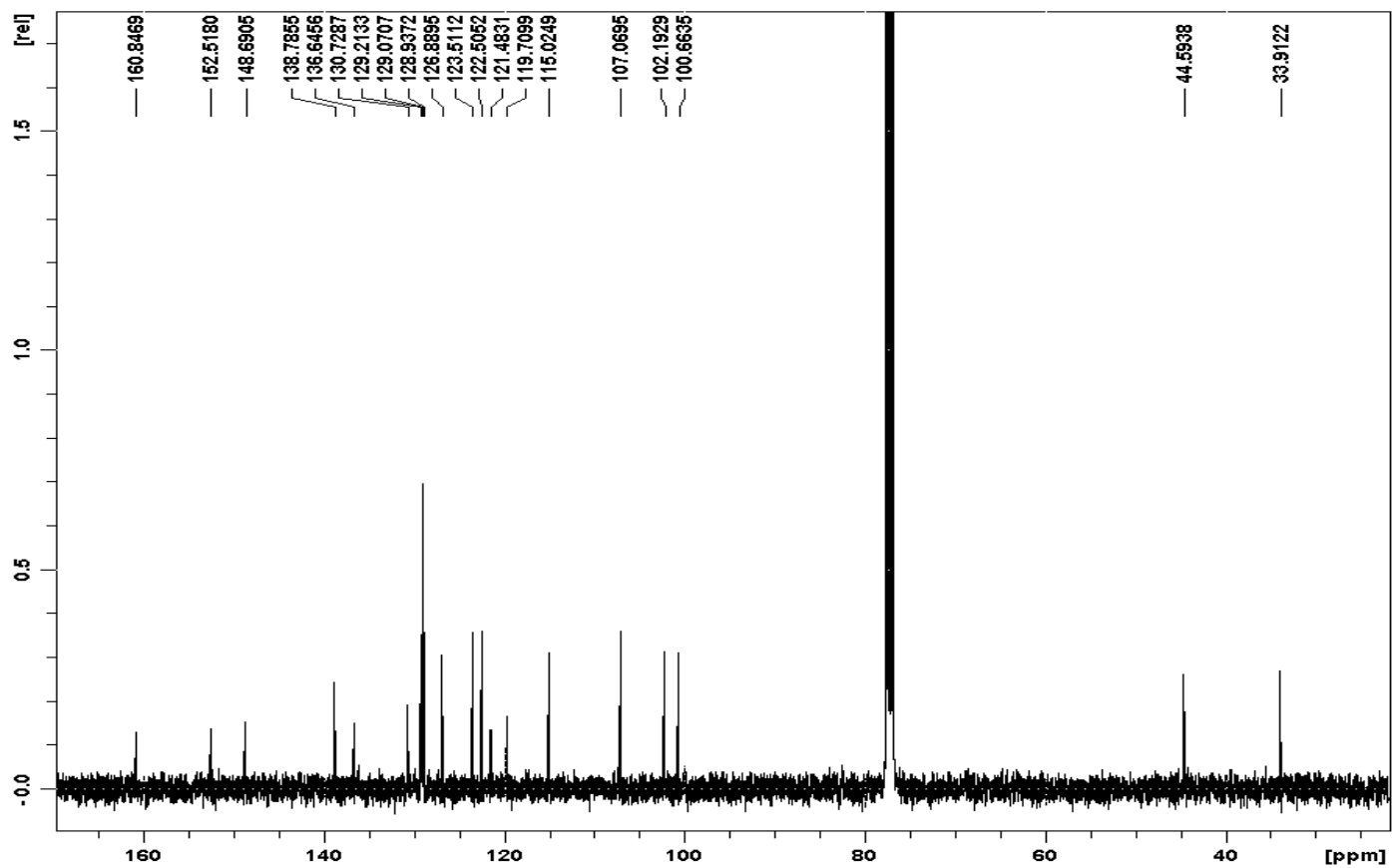


Figure S43. DEPT 135 spectrum of **9** in CDCl_3

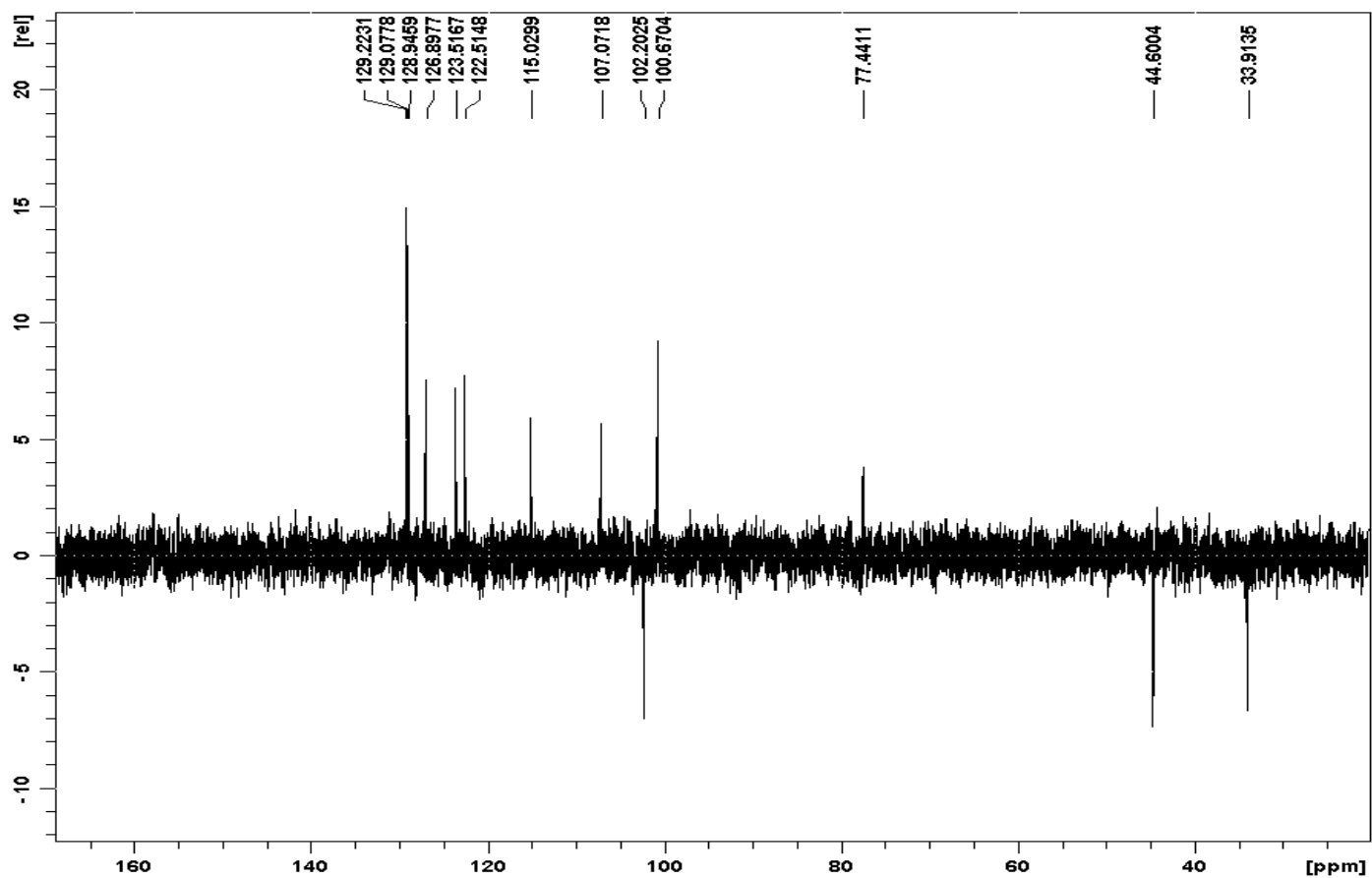


Figure S44. HSQC spectrum of **9** in CDCl₃

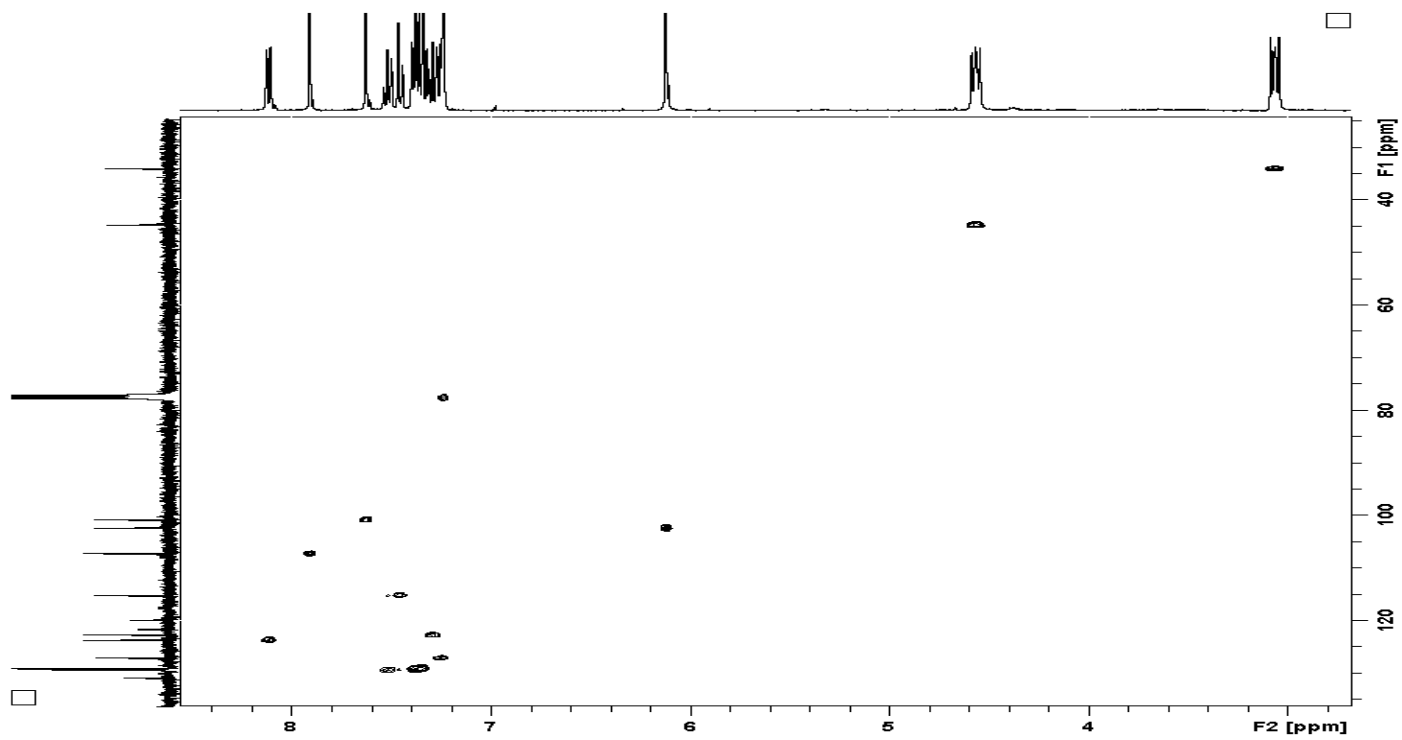


Figure S45. HMBC spectrum of **9** in CDCl₃

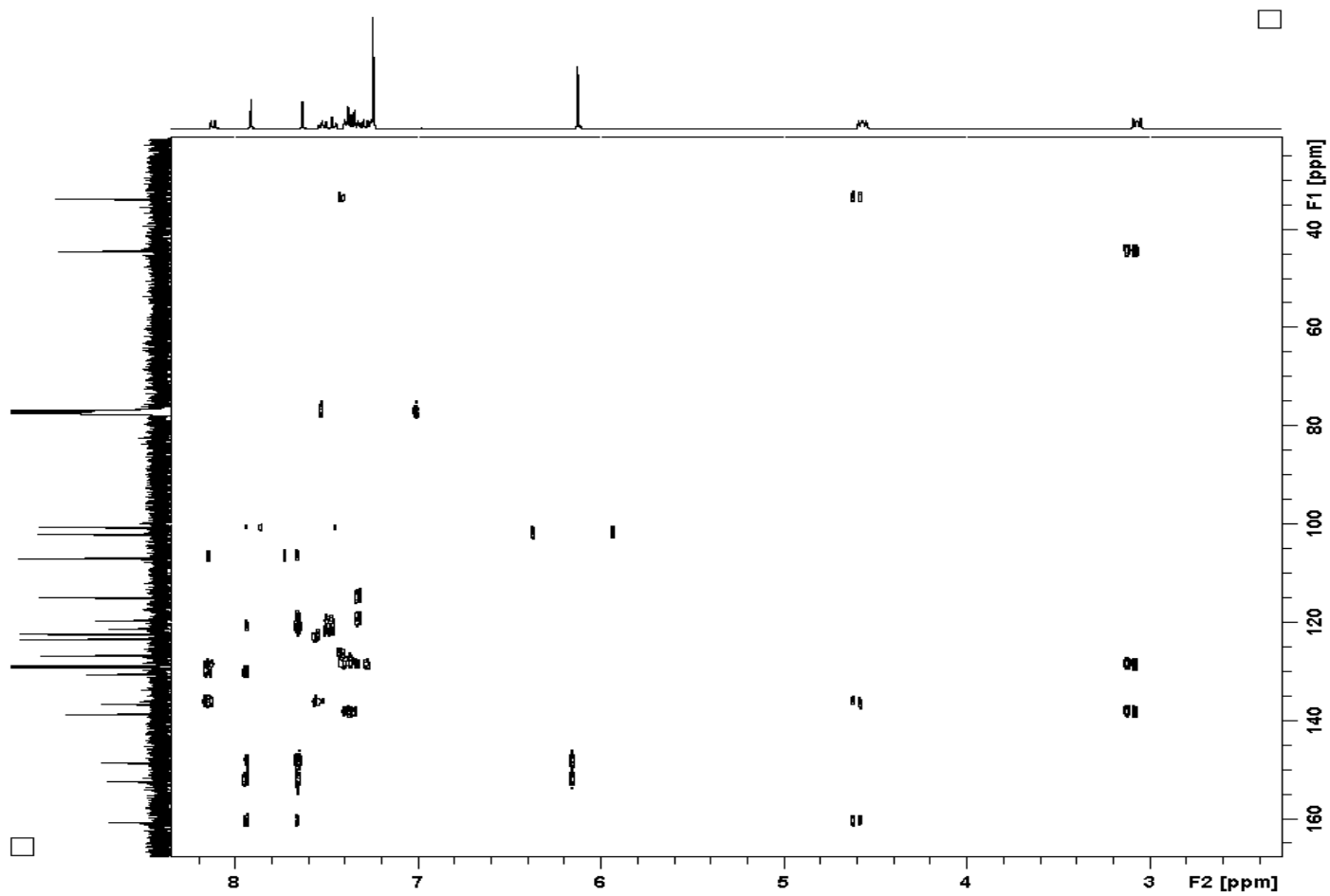


Figure S46. ^1H - ^1H COSY spectrum of **9** in CDCl_3

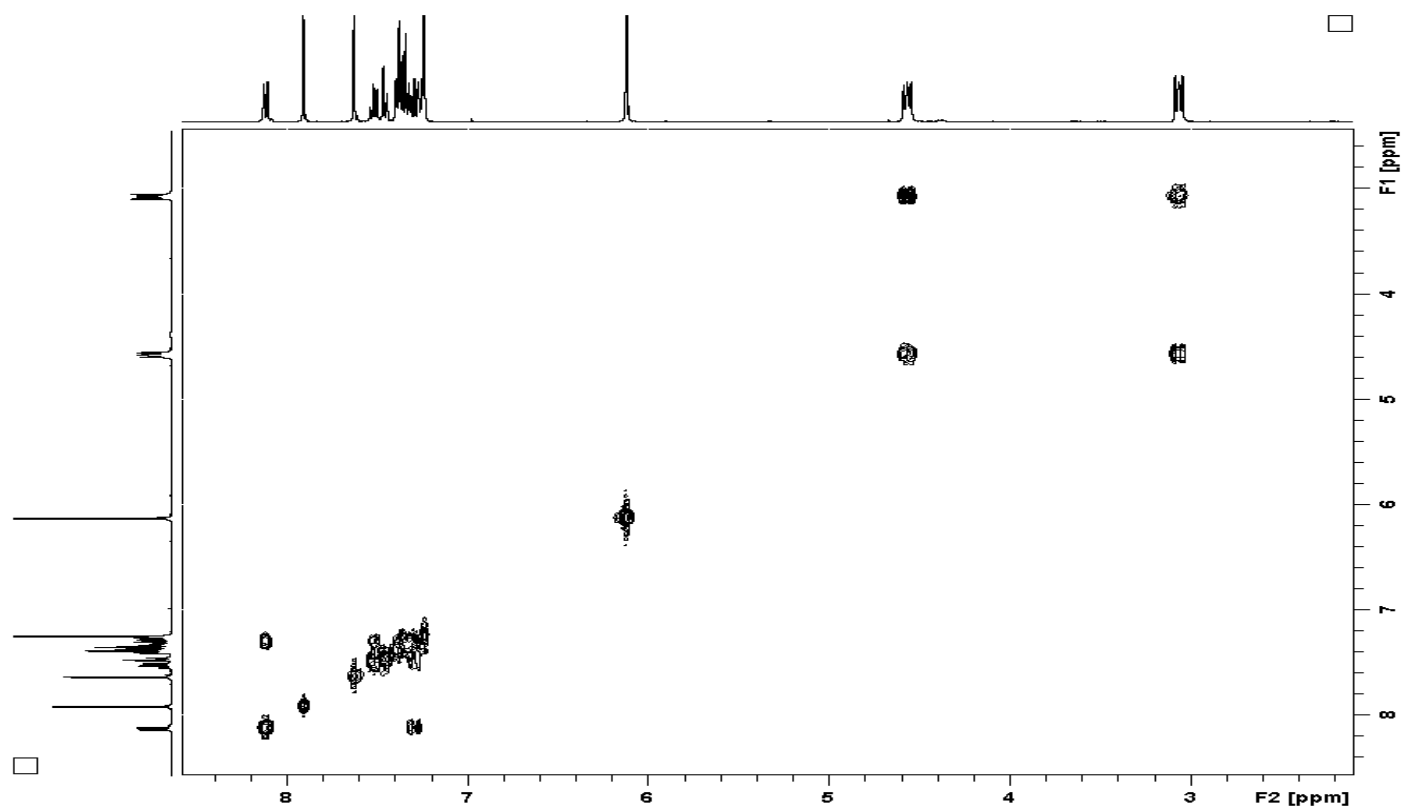


Figure S47. (+)-HR-ESI-MS spectrum of **10**

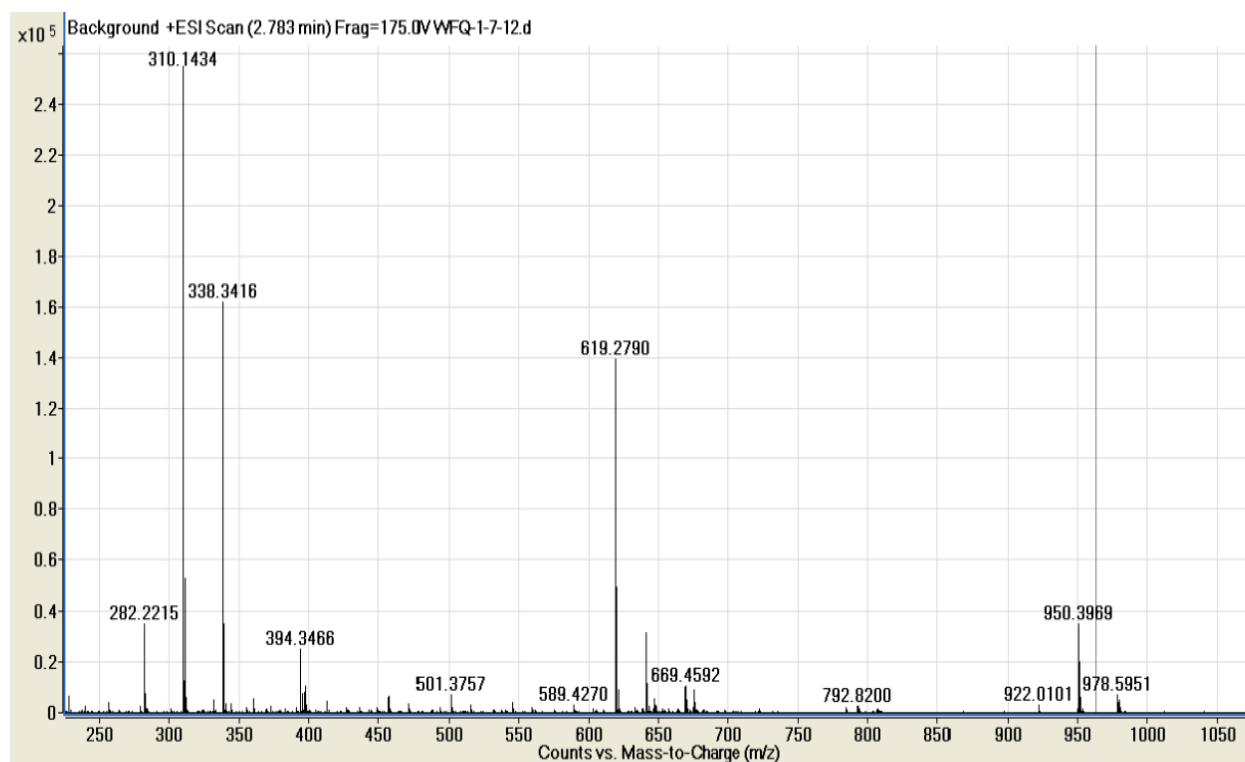


Figure S48. ^1H NMR spectrum (400 MHz) of **10** in CDCl_3

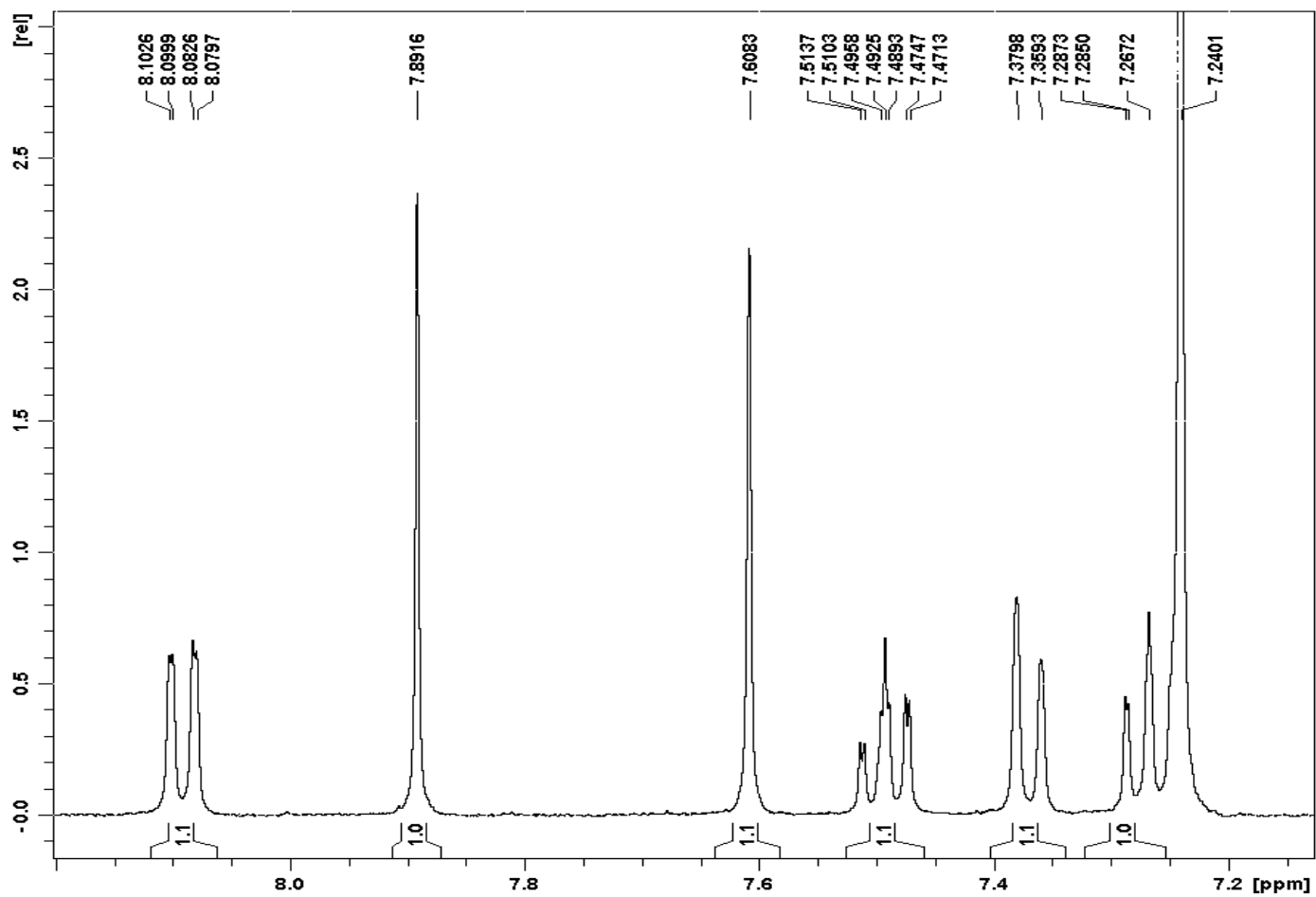
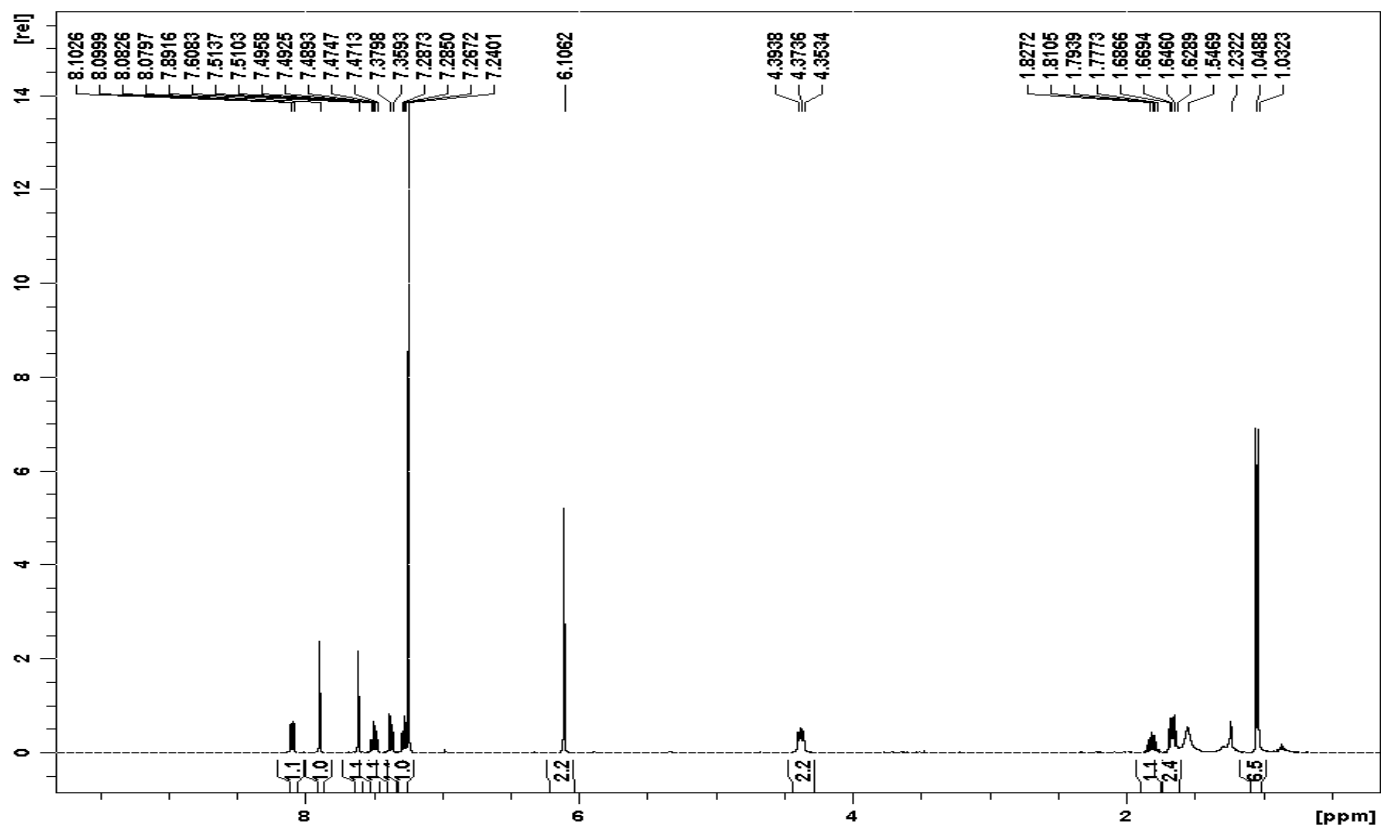


Figure S49. ^{13}C NMR spectrum (100 MHz) of **10** in CDCl_3

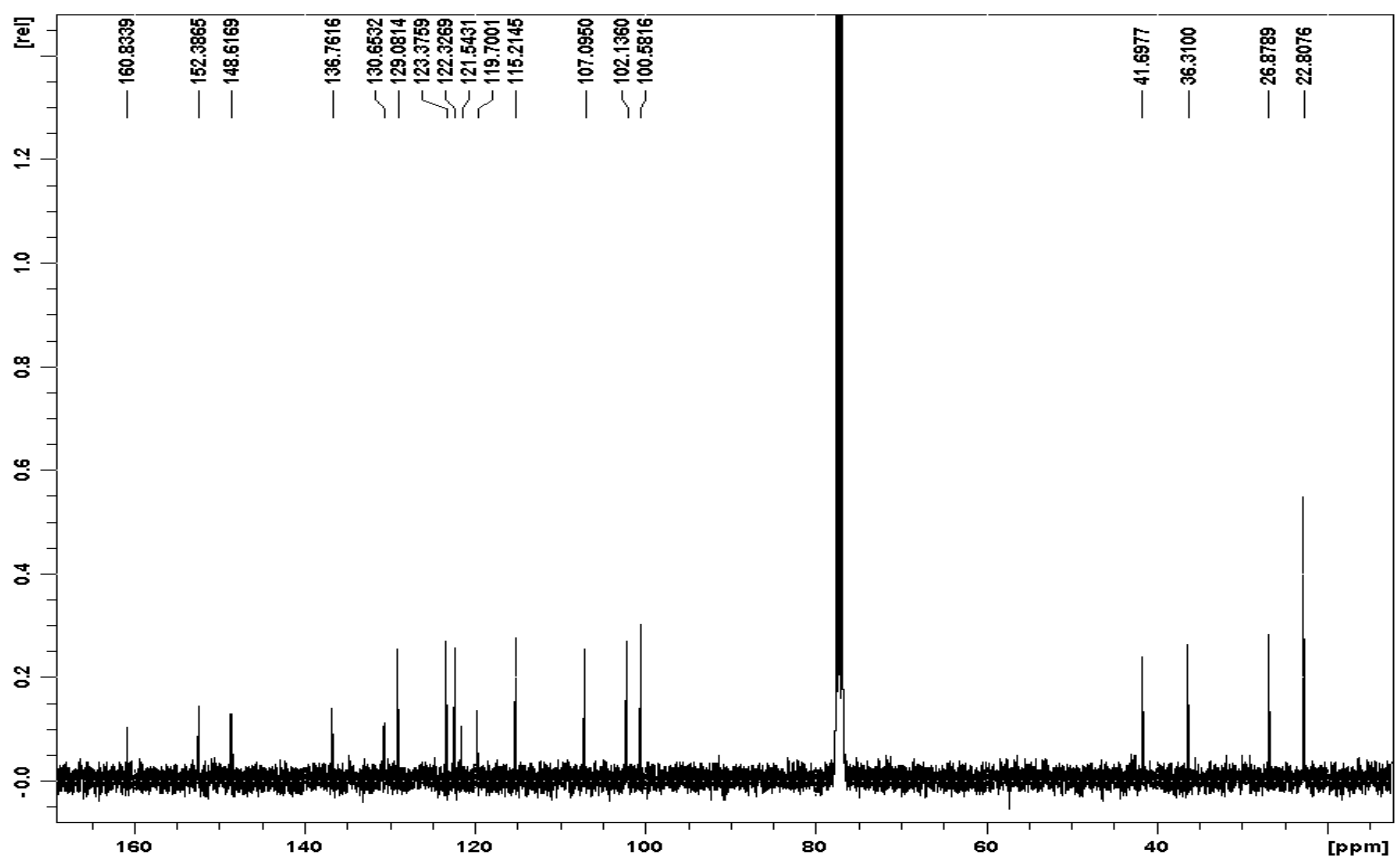


Figure S50. DEPT 135 spectrum of **10** in CDCl_3

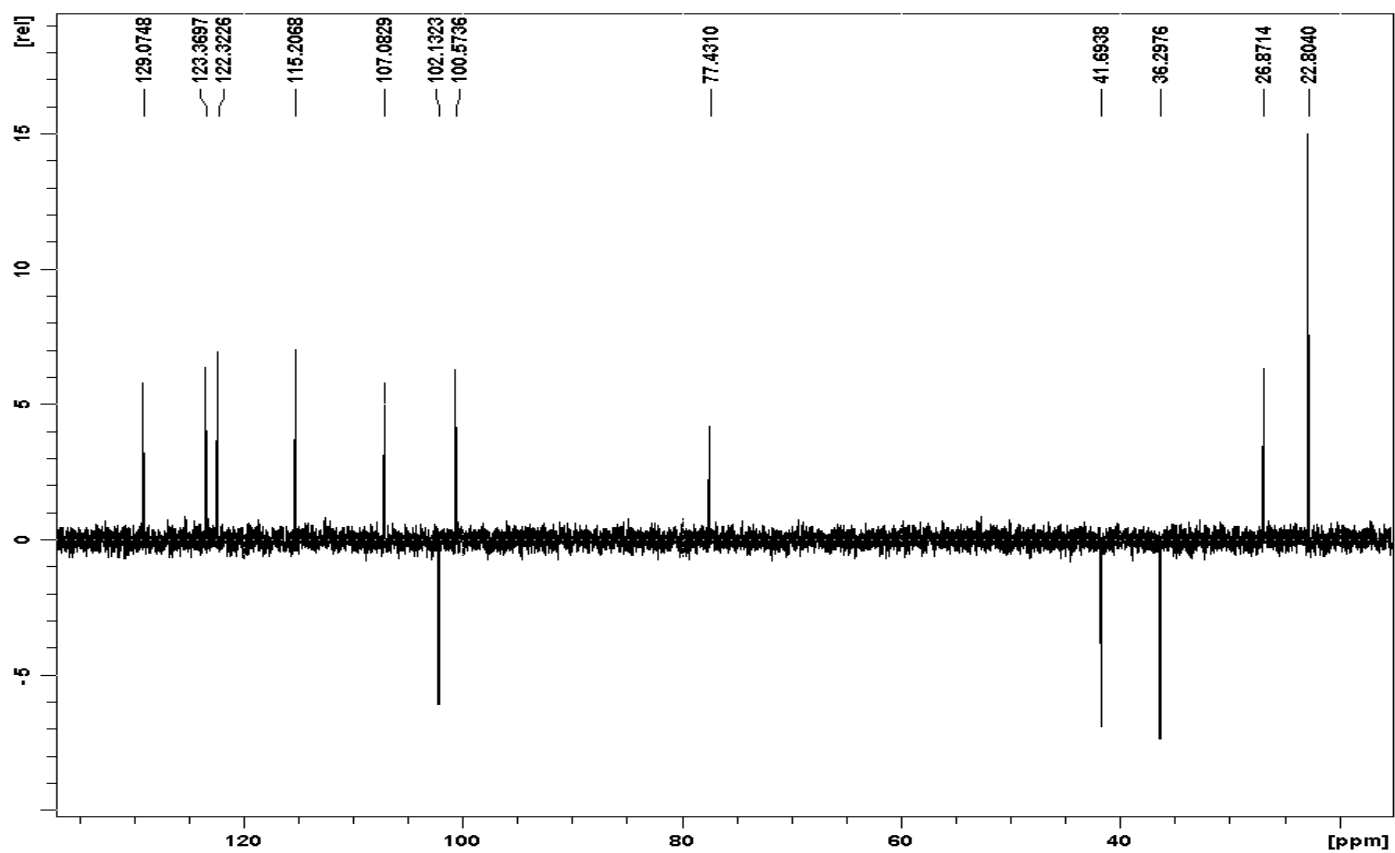


Figure S51. HSQC spectrum of **10** in CDCl₃

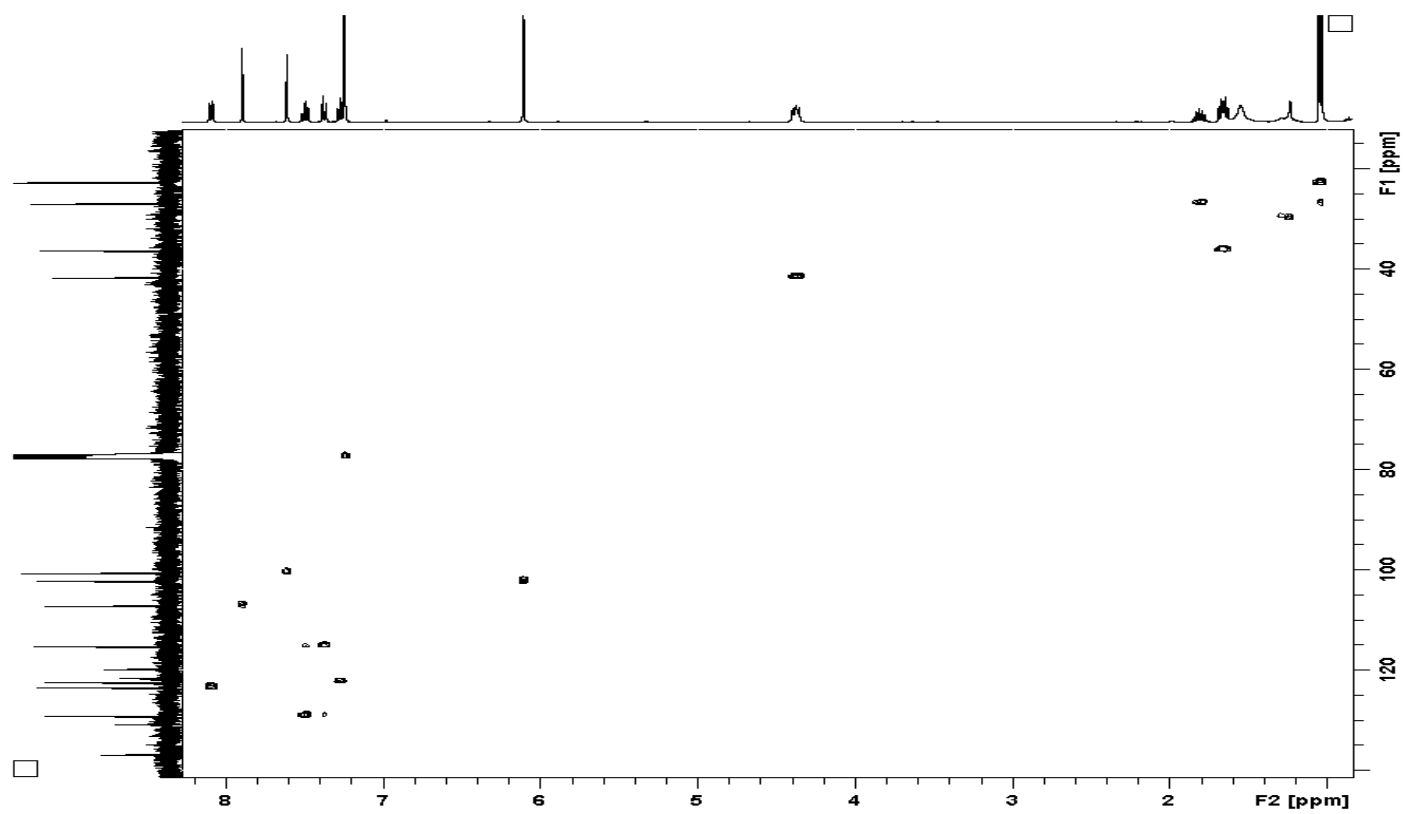


Figure S52. HMBC spectrum of **10** in CDCl₃

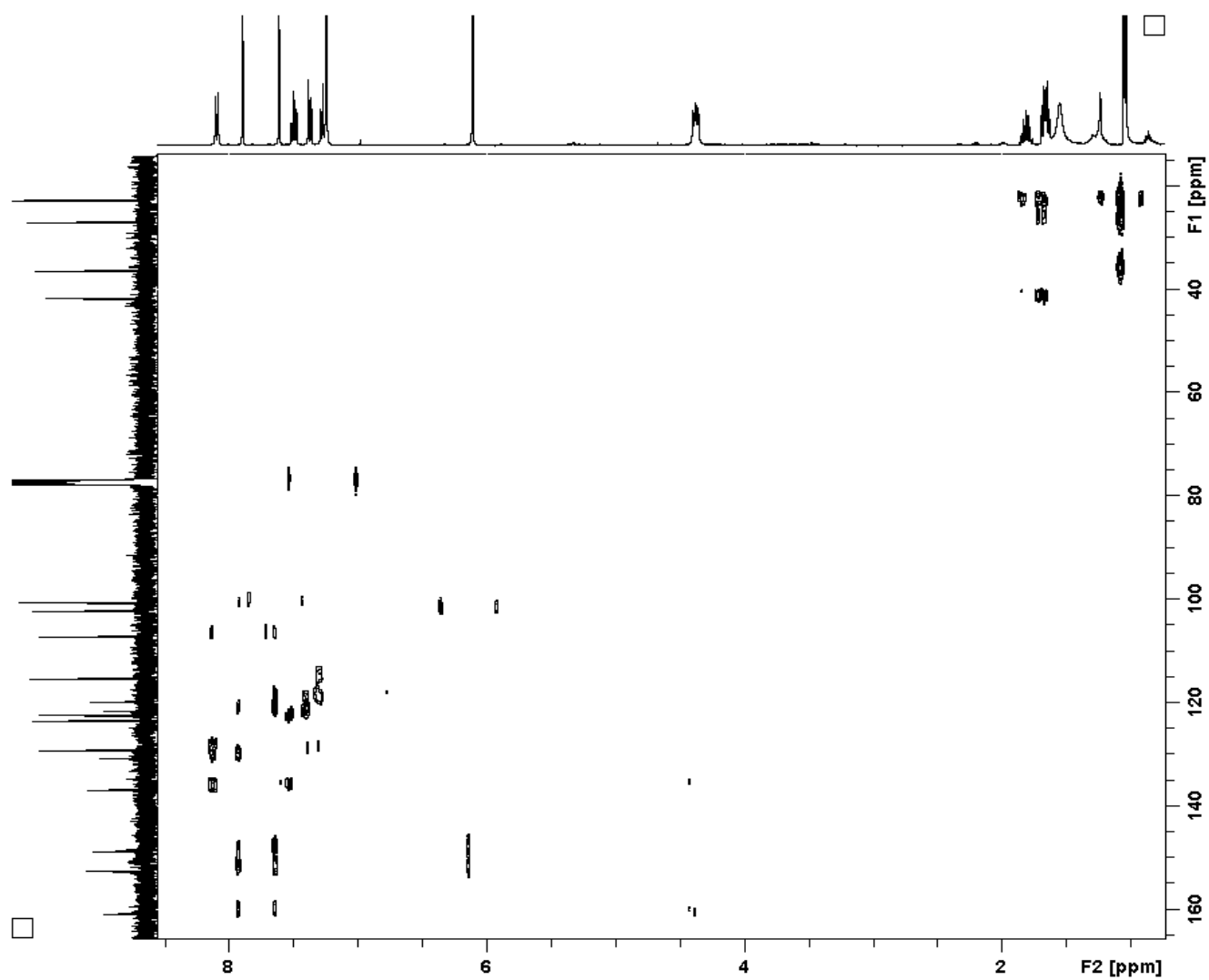


Figure S53. ^1H - ^1H COSY spectrum of **10** in CDCl_3

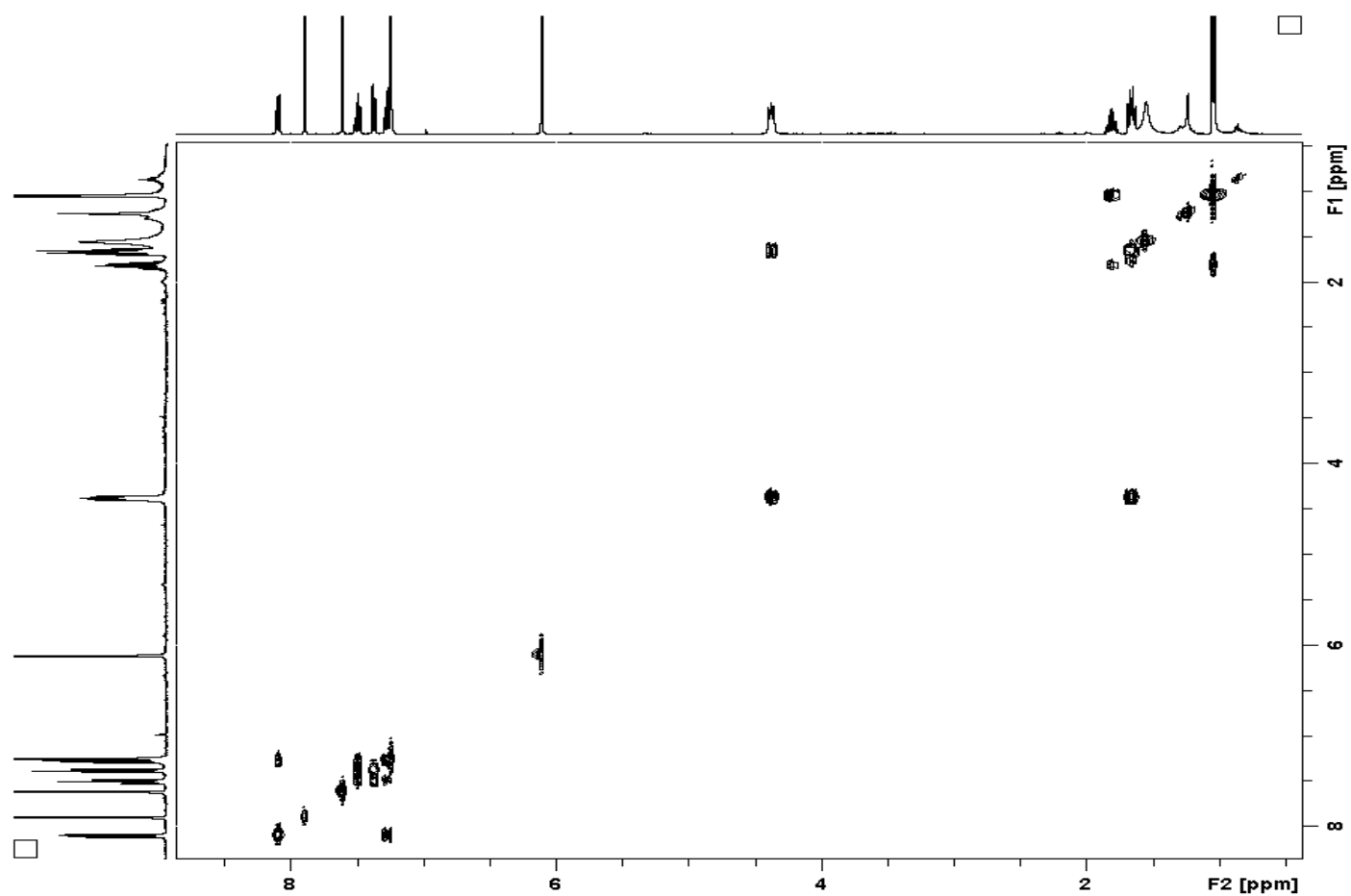


Figure S54. Crystal packing of compound **1**

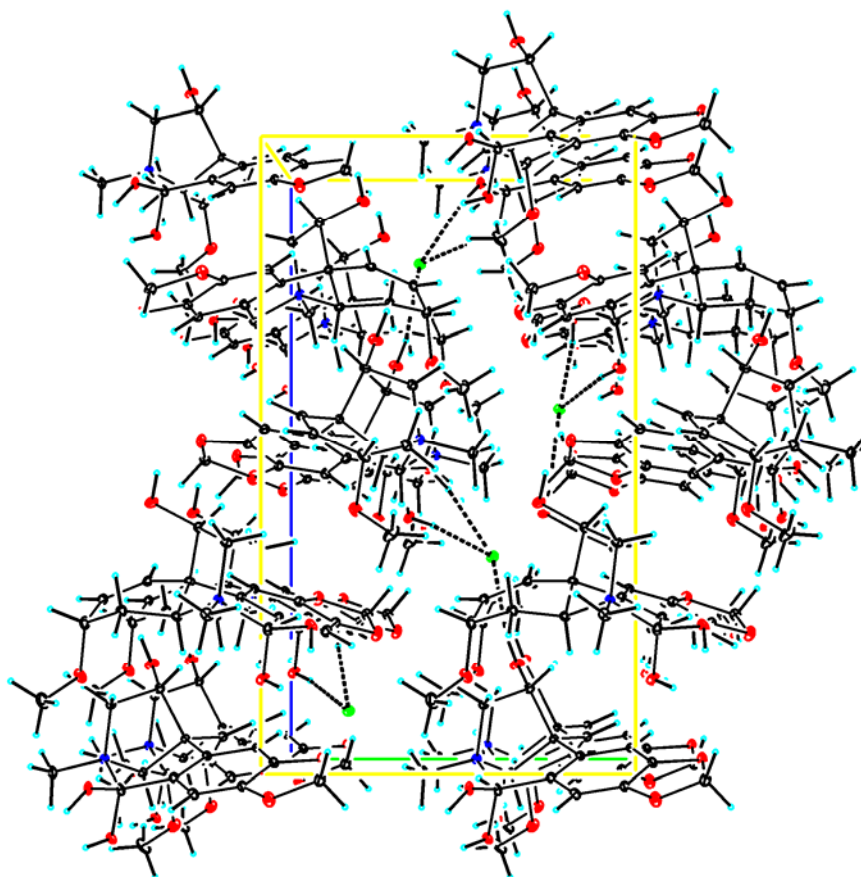


Figure S55. Crystal packing of compound **3** at 100 (2) K

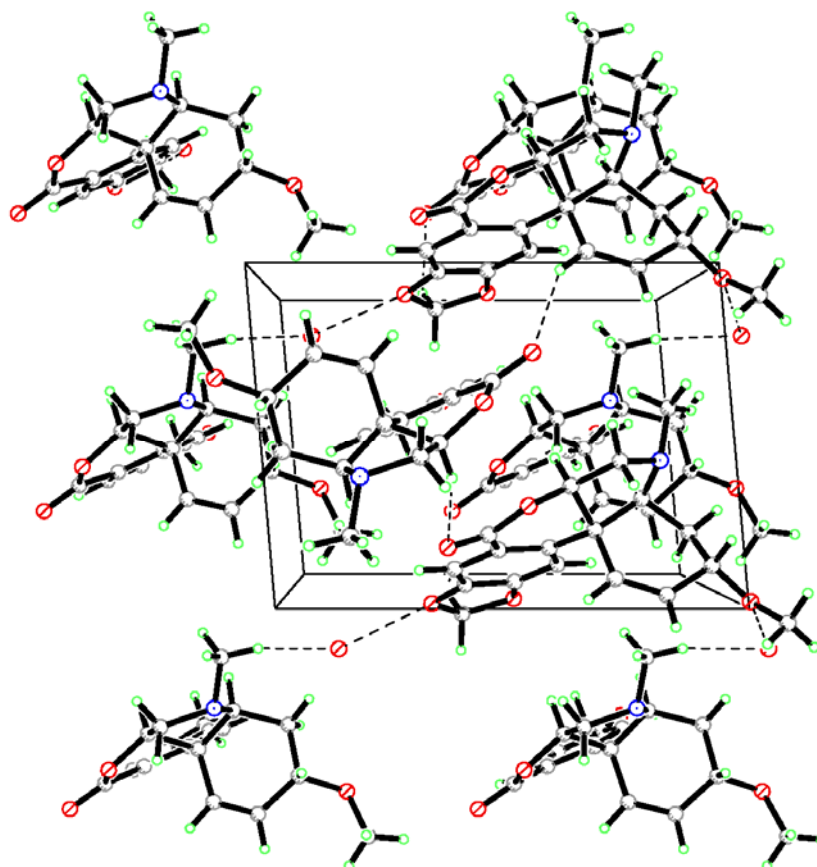


Table S1. Cytotoxicity of Compounds 1–15 (IC₅₀ in μ M) Against Five Cancer Cell Lines and One Non-Cancerous Human Beas-2B Cell Line^a

Compounds	HL-60	K562	A-549	HepG2	HT-29	Beas-2B	Highest index of selectivity
1	0.91	1.0	1.1	1.5	1.2	3.7	4.1
2	1.4	2.5	2.5	4.8	2.1	5.0	3.6
3	>40	>40	>40	>40	>40	N/A	
4	>40	>40	>40	>40	>40	N/A	
5	>40	>40	>40	>40	>40	N/A	
6	>40	>40	>40	>40	>40	N/A	
7	20	10	39	14	28	>40	>3.8
8	11	5.8	26	21	21	36	6.2
9	0.81	0.70	13	1.4	2.3	7.3	10
10	>40	>40	>40	>40	>40	N/A	
11	>40	>40	>40	>40	>40	N/A	
12	>40	>40	>40	>40	>40	N/A	
13	>40	>40	>40	>40	>40	N/A	
14	1.6	2.3	1.9	3.7	3.2	4.9	3.1
15	>40	>40	>40	>40	>40	N/A	
Positive control DDP	1.2	17	13	3.2	19	11	9.2
Positive control Taxol [®]	<0.008	<0.008	<0.008	<0.008	<0.008	0.88	110

^a N/A: not available. The “Highest index of selectivity” is the ratio of the IC₅₀ value for the Beas-2B cell line over the lowest cancer cell IC₅₀ value.