

FIG E1. **A**, Lymph node (left axilla) shows marked follicular lymphoid hyperplasia with prominent germinal centers (hematoxylin and eosin stain, original magnification $\times 20$). **B**, The same lymph node. A CD20 immunohistochemistry stain specific for B cells (Novocastra, Newcastle Upon Tyne, United Kingdom) shows dense staining (CD20 marker, immunohistochemical stain, original magnification $\times 20$).

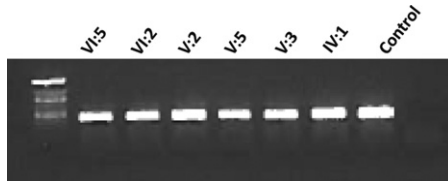


FIG E2. RT-PCR analysis shows no evidence of significant nonsense-mediated decay affecting the aberrant *LRBA* transcript in patients because it appears to have comparable abundance with the normal transcript seen in control subjects.