

FIG. S1. Stereoview showing the side chains of the charged residues that line the bigger pocket (pocket 2) at the bottom of the PE dimer.

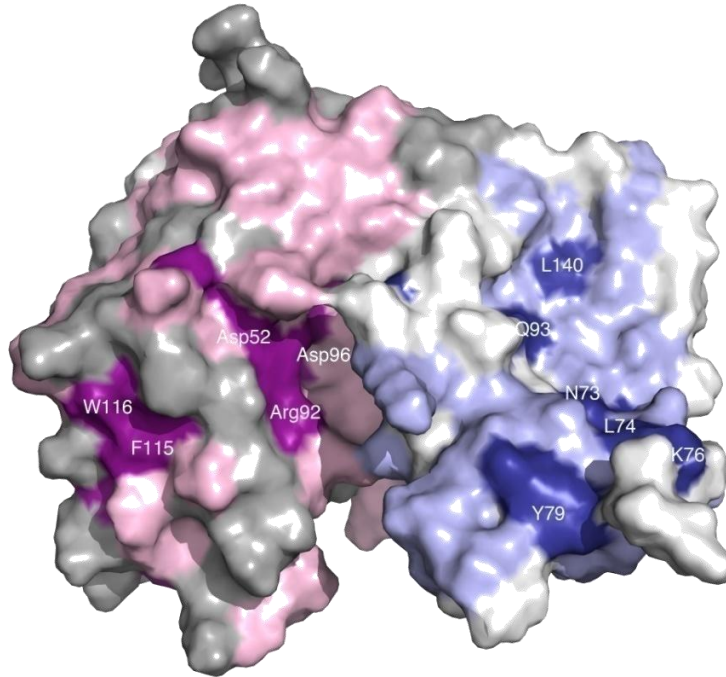


FIG. S2. Conserved residues at the surface of PE. Identical residues in the whole family of PE like proteins are shown in dark purple, homologous residues in pink, and finally non-conserved residues in white. Most of the conserved patches seem to be associated with regions that are important for the structure of the fold and are located in the core of the proteins. The two pockets that are found within the dimer of the protein are not themselves lined with conserved residues. However, in the wide funnel opening leading to the pocket at the bottom of the dimer there is a very conserved highly polar patch with central residues Asp52, Asp96 and Arg92. Some of these residues reside in the peptide 41 - 69 which has been implicated in Ln binding as described above.