

Figure S2: Assessment of 50% gel shifting activity of various *toxT* promoter mutants. The % of target shifted, as presented in Fig. S1, was plotted as a function of ToxR+ (TG129) membrane protein concentration. The binding curves were used to determine the concentrations of ToxR-containing membrane required for a 50% shift of each target. Data are split between two different binding curves for clarity, as having too many overlapping binding curves obscured the data.

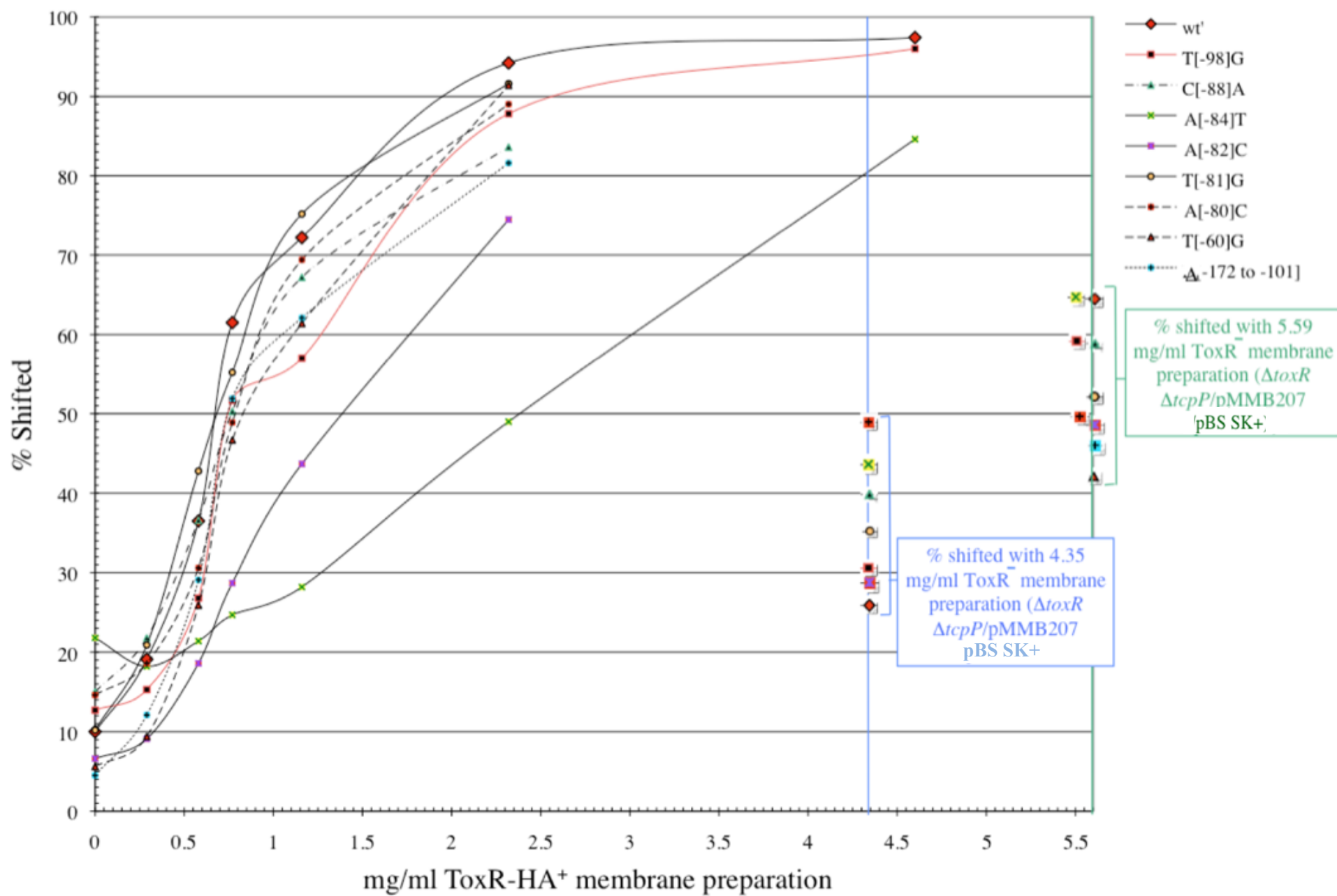


Figure S2: Continued