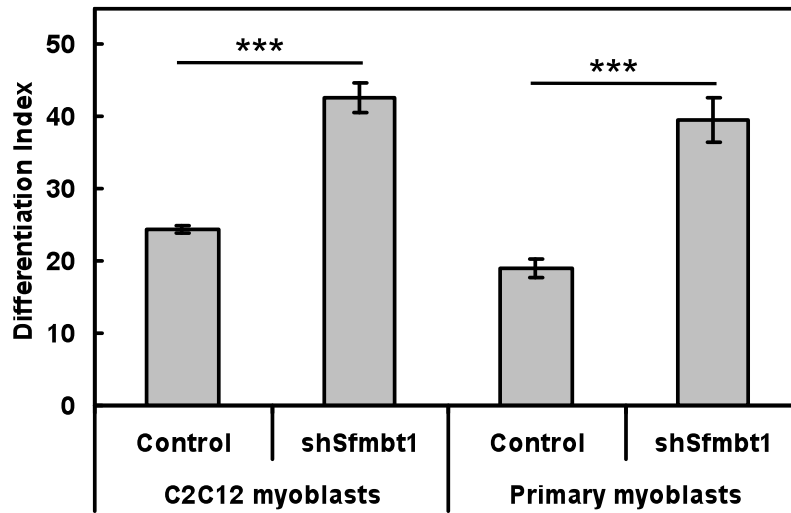


Supplementary Figure S1

LSD1/HDACs/CtBP Complex		MBT Family Proteins	
Name	No. Peptides	Name	No. Peptides
KDM1A (LSD1)	48	SFMBT1	46
RCOR1 (CoREST)	30	SFMBT2	2
RCOR2	12	L3MBTL3	34
RCOR3	19	L3MBTL4	1
PHF21A (BHC80)	27	Polycomb Repressive Complex	
HDAC1	25	Name	No. Peptides
HDAC2	15	PHC1	16
HMG20B (BRAFF35)	22	PHC2	6
HMG20A	12	PHC3	8
CTBP1	8	CBX2	6
CTBP2	11	CBX4	7
ZMYM2	38	CBX8	7
ZMYM3	8	RING1	3
ZNF217	22	RNF2 (RING2)	11
KIAA0182 (GSE1)	27	SCML2	14
GTF2I	5	BMI1	3
RREB1	25	RBBP7	1

Supplementary Figure S1. Identification of SFMBT1-associated proteins by mass spectrometric analysis. SFMBT1-associated proteins were identified by mass spectrometric analysis of the SFMBT1 protein complex isolated from nuclear extracts of FLAG-SFMBT1-expressing 293T cells with anti-FLAG (M2) agarose beads. The number of peptides for each protein was indicated.

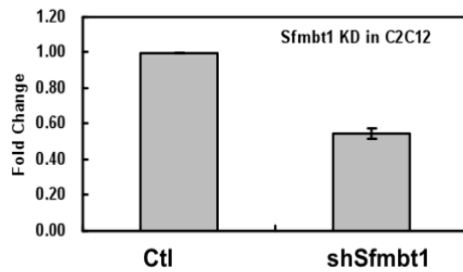
Supplementary Figure S2



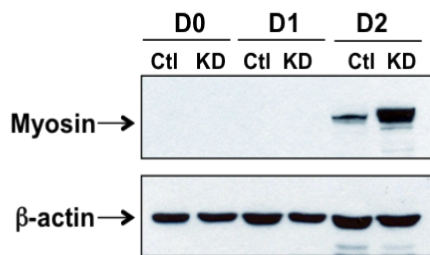
Supplementary Figure S2. Knockdown of Sfmbt1 in C2C12 and primary myoblasts promotes myogenic differentiation. Differentiation index was calculated as the percentage of Myosin-positive cells out of the total cells. n=4, ***p<0.001.

Supplementary Figure S3

A

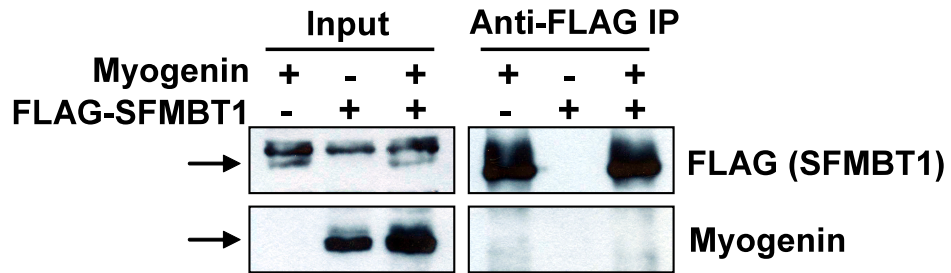


B



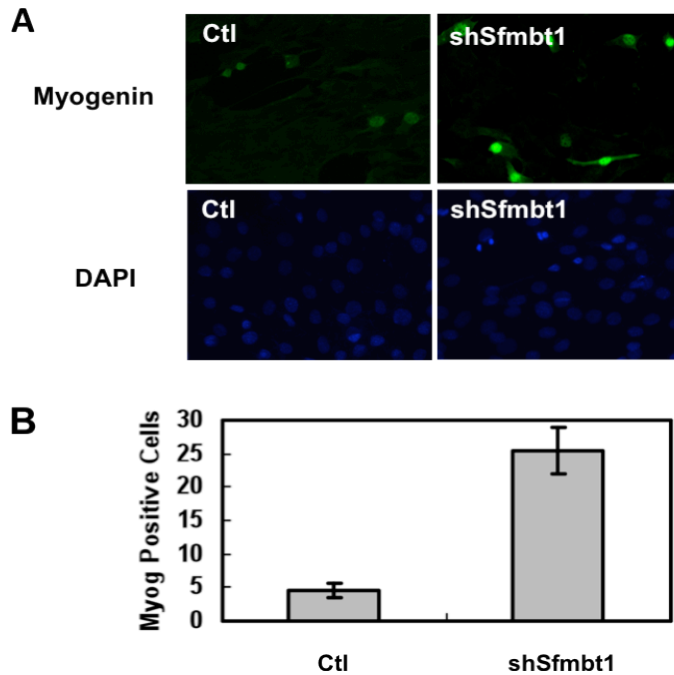
Supplementary Figure S3. Knockdown of Sfmtb1 with an independent shRNA lentiviral construct (G2) in C2C12 myoblasts also resulted in enhanced differentiation. (A) Real-time RT-PCR showed reduced expression level of Sfmtb1 in C2C12 knockdown cells (shSfmtb1) in comparison with the scramble shRNA control (Ctl). (B) Sfmtb1 knockdown C2C12 cells expressed increased level of the differentiation marker Myosin when induced differentiation.

Supplementary Figure S4



Supplementary Figure S4. SFMBT1 failed to co-IP with Myogenin. 293T cells were co-transfected with FLAG-SFMBT1 (pQCXIP-FLAG-SFMBT1) and Myogenin (pBabe-Myogenin) plasmids as indicated and the whole cell lysates were harvested 48 h after transfection. SFMBT1 IP was performed with anti-FLAG agaroses followed by Western blotting with indicated antibodies.

Supplementary Figure S5



Supplementary Figure S5. Sfmbt1 knockdown resulted in an increase in Myogenin-expressing cells. (A) C2C12 myoblasts transduced with shCtl and shSfmbt1 lentiviruses were induced to undergo myogenic differentiation for 24 h. The cells were then stained using anti-Myogenin antibodies (green) and counter-stained with DAPI to label nuclei (blue). (B) The average number of Myogenin-positive cells in each field was presented. At least three independent fields were counted.

Table S1. Primers used in this study were shown.

Primers for gene expression			
Genes	Forward primer	Reverse primer	Amplicon (bp)
Sfmbt1	AGTGTGGCCGATGTCGTGCG	GAGCAAAAGGGCCTGCCCCGT	99
Myog	GTCCAACCCAGGAGATCATT	GACGTAAGGGAGTGCAGATTGTG	70
P21	CGGTGGAACCTTGACTTCGT	CAGGGCAGAGGAAGTACTGG	159
Pax7	AGGACGACGAGGAAGGAGACA	TCATCCAGACGGTCCCTTT	100
Mef2c	ACTGGGAAACCCCAATCTTC	ATCAGACCGCCTGTGTTACC	111
Mylpf	CGGACCCGGAGGATGTG	TGGTGCCCTTCCCTTCTG	63
Myh3	CAATAAACTGCGGGCAAAGAC	CTTGCTCACTCCTCGCTTTCA	75
Gas2	ACTTCTGCCCCATCTCCTT	CTTGCAGGGAGGATCTTCAG	115
Tnnc2	AAGAGGAACTGGCTGAGTGCTT	GCTAGCTCCTCAGCATCAATGTAG	73
Gapdh	AACTTTGGGATTGTGGAAGG	ACACATTGGGGGTAGGAACA	222
Primers for CHIP			
Myog Pro	GAATCACATGTAATCCACTGGA	ACGCCAACTGCTGGGTGCCA	151
Primers for DNase I sensitivity assay			
Myog Pro	GAATCACATGTAATCCACTGGA	GCTCCATCAGGTCGGAAAAGGCTTG	201

Table S2. A list of genes showed up-regulated expression in Sfmbt1-knockdown C2C12 cells

probelD	Gene Symbol	Gene Title	Fold-change	p-value	^a MyoD Binding	^a Distance to TSS (bp)
1452651_a_at	Myl1	myosin, light polypeptide 1	7.20	0	Yes	-2065
1448371_at	Mylpf	myosin light chain, phosphorylatable, fast skeletal muscle	6.35	0	Yes	-1120
1427115_at	Myh3	myosin, heavy polypeptide 3, skeletal muscle, embryonic	5.18	0	Yes	-710
1427520_a_at	Myh1	myosin, heavy polypeptide 1, skeletal muscle, adult	4.48	0		
1417464_at	Tnnc2	troponin C2, fast	4.06	0	Yes	1877
1419391_at	Myog	myogenin	4.02	0	Yes	-17
1448201_at	Sfrp2	secreted frizzled-related protein 2	3.96	0		
1415927_at	Actc1	actin, alpha, cardiac muscle 1	3.96	0		
1427735_a_at	Acta1	actin, alpha 1, skeletal muscle	3.83	0	Yes	3610
1418370_at	Tnnc1	troponin C, cardiac/slow skeletal	3.80	0	Yes	-1612
1418095_at	Smpx	small muscle protein, X-linked	3.67	0		
1418072_at	Hist1h2bc	histone cluster 1, H2bc	3.62	0		
1450813_a_at	Tnni1	troponin I, skeletal, slow 1	3.31	0		
1422580_at	Myl4	myosin, light polypeptide 4	3.09	0	Yes	-164
1419606_a_at	Tnnt1	troponin T1, skeletal, slow	3.09	0		
1423606_at	Postn	periostin, osteoblast specific factor	2.74	0		
1423669_at	Col1a1	collagen, type I, alpha 1	2.71	0	Yes	1184
1455792_x_at	Ndn	necdin	2.54	0		
1416101_a_at	Hist1h1c	histone cluster 1, H1c	2.51	0	Yes	38
1418046_at	Nap1l2	nucleosome assembly protein 1-like 2	2.49	0	Yes	2541
1417185_at	Ly6a	lymphocyte antigen 6 complex, locus A	2.46	0	Yes	-1909
1447657_s_at	Synpo2l	synaptopodin 2-like	2.46	0	Yes	2538
1454673_at	Wasf2	WAS protein family, member 2	2.41	0	Yes	-660
1434070_at	Jag1	jagged 1	2.36	0		
1418209_a_at	Pfn2	profilin 2	2.35	0	Yes	-3581
1424780_a_at	Reep3	receptor accessory protein 3	2.26	0	Yes	3357
1426208_x_at	Plagl1	pleiomorphic adenoma gene-like 1	2.18	0		
1417399_at	Gas6	growth arrest specific 6	2.18	0		
1419123_a_at	Pdgfc	platelet-derived growth factor, C polypeptide	2.17	0	Yes	611
1433482_a_at	Fubp1	far upstream element (FUSE) binding protein 1	2.15	0	Yes	420
1421679_a_at	Cdkn1a	cyclin-dependent kinase inhibitor 1A (P21)	2.14	0.00392	Yes	2796
1419050_at	Tmem8c	transmembrane protein 8C	2.13	0		
1426015_s_at	Asph	aspartate-beta-hydroxylase	2.10	0	Yes	-4438
1419397_at	Pola1	polymerase (DNA directed), alpha 1	2.10	0		
1416612_at	Cyp1b1	cytochrome P450, family 1, subfamily b, polypeptide 1	2.10	0		
1452540_a_at	Gm11277	predicted gene 11277	2.09	0		
1422300_at	Nog	noggin	2.08	0	Yes	1033
1454838_s_at	Pkdcc	protein kinase domain containing, cytoplasmic	2.06	0		
1441667_s_at	Smyd1	SET and MYND domain containing 1	2.06	0		
1426555_at	Scpep1	serine carboxypeptidase 1	2.02	0		
1416034_at	Cd24a	CD24a antigen	2.01	0		
1418603_at	Avpr1a	arginine vasopressin receptor 1A	2.01	0	Yes	638
1428891_at	Parm1	prostate androgen-regulated mucin-like protein 1	2.01	0.00002	Yes	6
1435274_at	Spopl	speckle-type POZ protein-like	2.00	0.00003		
1417785_at	Pla1a	phospholipase A1 member A	1.99	0		
1452880_at	Znhit3	zinc finger, HIT type 3	1.99	0		
1433789_at	Snhg3	small nucleolar RNA host gene (non-protein coding) 3	1.98	0.00002	Yes	2861
1450112_a_at	Gas2	growth arrest specific 2	1.97	0	Yes	73
1416953_at	Ctgf	connective tissue growth factor	1.94	0	Yes	517
1425476_at	Col4a5	collagen, type IV, alpha 5	1.93	0.00001		
1444061_at	Prr9	proline rich 9	1.93	0		
1455966_s_at	Nudt21	nudix (nucleoside diphosphate linked moiety X)-type motif 21	1.92	0.01312		
1450387_s_at	Ak4	adenylate kinase 4	1.92	0		
1444494_at	Kbtbd10	kelch repeat and BTB (POZ) domain containing 10	1.92	0	Yes	-1485
1427256_at	Vcan	versican	1.90	0		
1436867_at	Srl	sarcalumenin	1.89	0.00001		
1419487_at	Mybph	myosin binding protein H	1.88	0	Yes	1000
1451341_s_at	Tmem189	transmembrane protein 189	1.87	0		
1451989_a_at	Mapre2	microtubule-associated protein, RP/EB family, member 2	1.87	0	Yes	89
1434499_a_at	Ldhb	lactate dehydrogenase B	1.86	0.00013		
1422644_at	Sh3bgr	SH3-binding domain glutamic acid-rich protein	1.85	0		

1435355_at	Neb	nebulin	1.85	0		
1450118_a_at	Tnnt3	troponin T3, skeletal, fast	1.84	0.00004	Yes	386
1416408_at	Acox1	acyl-Coenzyme A oxidase 1, palmitoyl	1.84	0	Yes	-3641
1450455_s_at	Akr1c12	aldo-keto reductase family 1, member C12	1.83	0.00002		
1434129_s_at	Lhfp12	lipoma HMGIC fusion partner-like 2	1.83	0	Yes	4773
1429459_at	Sema3d	sema domain, immunoglobulin domain (Ig), short basic domain, secreted, (semaphorin) 3D	1.83	0.00001	Yes	193
	1600012H06					
1428217_at	Rik	RIKEN cDNA 1600012H06 gene	1.82	0	Yes	-121
1449178_at	Pdlim3	PDZ and LIM domain 3	1.80	0	Yes	-184
1421664_a_at	Styx	serine/threonine/tyrosine interaction protein	1.79	0.00015	Yes	-80
1421571_a_at	Ly6c1	lymphocyte antigen 6 complex, locus C1	1.78	0		
1437288_at	Impad1	inositol monophosphatase domain containing 1	1.78	0.00002		
1428125_at	Atxn713b	ataxin 7-like 3B	1.77	0	Yes	3683
1416666_at	Serpine2	serine (or cysteine) peptidase inhibitor, clade E, member 2	1.77	0		
1460208_at	Fbn1	fibrillin 1	1.77	0	Yes	3461
1454752_at	Rbm24	RNA binding motif protein 24	1.77	0.00004	Yes	47
1416645_a_at	Afp	alpha fetoprotein	1.76	0		
1448664_a_at	Speg	SPEG complex locus	1.75	0.00007	Yes	-3728
1416498_at	Ppic	peptidylprolyl isomerase C	1.74	0		
1456035_at	Nxf3	nuclear RNA export factor 3	1.74	0.00002		
1452107_s_at	Npnt	nephronectin	1.73	0.00001		
1416680_at	Ube3a	ubiquitin protein ligase E3A	1.73	0.00113	Yes	198
1447977_x_at	Gm14430	predicted gene 14430	1.73	0.00001		
1449133_at	Sprr1a	small proline-rich protein 1A	1.73	0	Yes	2185
1439766_x_at	Vegfc	vascular endothelial growth factor C	1.72	0	Yes	240
1415897_a_at	Mgst1	microsomal glutathione S-transferase 1	1.72	0		
1428083_at	Neat1	nuclear paraspeckle assembly transcript 1 (non-protein coding)	1.72	0	Yes	141
1434549_at	Rab11a	RAB11a, member RAS oncogene family	1.72	0		
1451348_at	Depdc6	DEP domain containing 6	1.72	0.00003	Yes	207
1422606_at	C1qtnf3	C1q and tumor necrosis factor related protein 3	1.71	0	Yes	-48
1451475_at	Plxnd1	plexin D1	1.71	0	Yes	1036
1433676_at	Wnk1	WNK lysine deficient protein kinase 1	1.71	0		
	1110021L09					
1428795_at	Rik	RIKEN cDNA 1110021L09 gene	1.70	0		
1460430_at	Rap2c	RAP2C, member of RAS oncogene family	1.70	0		
	2610528A11					
1435639_at	Rik	RIKEN cDNA 2610528A11 gene	1.70	0.00001		
1449118_at	Dbt	dihydrolipoamide branched chain transacylase E2	1.69	0.00002	Yes	63
1436944_x_at	Pisd-ps1	phosphatidylserine decarboxylase, pseudogene 1	1.68	0	Yes	92
1433730_at	Elmod2	ELMO domain containing 2	1.68	0		
1436534_at	Trove2	TROVE domain family, member 2	1.68	0.00001		
1436935_x_at	Clns1a	chloride channel, nucleotide-sensitive, 1A	1.67	0		
1420642_a_at	Romo1	reactive oxygen species modulator 1	1.67	0.00001	Yes	323
1421027_a_at	Mef2c	myocyte enhancer factor 2C	1.67	0.0002	Yes	121
1450922_a_at	Tgfb2	transforming growth factor, beta 2	1.67	0		
1448152_at	Igf2	insulin-like growth factor 2	1.66	0		
1417644_at	Sspn	sarcospan	1.66	0.00001	Yes	117
1457435_x_at	Myom2	myomesin 2	1.65	0	Yes	2480
1448933_at	Pcdhb17	protocadherin beta 17	1.65	0.00001		
1434411_at	Col12a1	collagen, type XII, alpha 1	1.65	0		
	2010107H07					
1456204_at	Rik	RIKEN cDNA 2010107H07 gene	1.63	0		
1455184_at	Mobk1a	MOB1, Mps One Binder kinase activator-like 1A (yeast)	1.63	0		
1416911_a_at	Akirin1	akirin 1	1.63	0.00002		
1420858_at	Pkia	protein kinase inhibitor, alpha	1.63	0	Yes	38
1437845_x_at	Pofut2	protein O-fucosyltransferase 2	1.62	0		
	1110007C09					
1431359_a_at	Rik	RIKEN cDNA 1110007C09 gene	1.62	0		
1452237_at	Arfg1	ArfGAP with FG repeats 1	1.62	0	Yes	-91
1452893_s_at	Enho	energy homeostasis associated	1.62	0	Yes	3266
1422520_at	Nefm	neurofilament, medium polypeptide	1.62	0	Yes	4966
1418308_at	Hus1	Hus1 homolog (S. pombe)	1.61	0		
1420608_at	Rbm18	RNA binding motif protein 18	1.61	0		
1423287_at	Cbln1	cerebellin 1 precursor protein	1.61	0.00003	Yes	3698
1418304_at	Cdhr1	cadherin-related family member 1	1.61	0.00003		

1460656_a_at	Sft2d1	SFT2 domain containing 1	1.61	0		
1434552_at	Wdr77	WD repeat domain 77	1.61	0.00001		
1421858_at	Adam17	a disintegrin and metallopeptidase domain 17	1.61	0		
1449410_a_at	Gas5	growth arrest specific 5	1.60	0		
1451412_a_at	Ift20	intraflagellar transport 20 homolog (Chlamydomonas)	1.60	0.00055	Yes	-881
1426852_x_at	Nov	nephroblastoma overexpressed gene	1.60	0.00005		
1435524_at	Snhg8	small nucleolar RNA host gene 8	1.60	0.00002		
1418004_a_at	Tmem176b	transmembrane protein 176B asparagine-linked glycosylation 11 homolog (yeast, alpha-1,2-mannosyltransferase)	1.60	0.00011		
1434187_at	Alg11	1.60	0.00011	Yes	-167	
1448875_at	Zhx1	zinc fingers and homeoboxes 1	1.60	0.00001		
1418973_at	Blzf1	basic leucine zipper nuclear factor 1	1.59	0		
1448124_at	Gusb	glucuronidase, beta	1.59	0		
1453851_a_at	Gadd45g	growth arrest and DNA-damage-inducible 45 gamma	1.59	0	Yes	-48
1449929_at	Dyntl3	dynein light chain Tctex-type 3	1.59	0		
1425603_at	Tmem176a	transmembrane protein 176A	1.59	0.00017		
1436361_at	Vgll2	vestigial like 2 homolog (Drosophila)	1.59	0.00002	Yes	-6
1448961_at	Plscr2	phospholipid scramblase 2	1.58	0.00052		
1436387_at	Homer1	homer homolog 1 (Drosophila)	1.58	0	Yes	-894
1459981_s_at	Rsbm1	rosbin, round spermatid basic protein 1	1.58	0.00005	Yes	-228
1436210_at	Gk5	glycerol kinase 5 (putative)	1.58	0.00027		
1420875_at	Twf1	twinfilin, actin-binding protein, homolog 1 (Drosophila)	1.58	0	Yes	-2839
1419662_at	Ogn	osteoglycin	1.57	0.00004	Yes	-208
1436319_at	Sulf1	sulfatase 1	1.57	0.00005	Yes	-283
1447967_at	Tmem69	transmembrane protein 69	1.57	0.00221		
1437466_at	Alcam	activated leukocyte cell adhesion molecule	1.57	0.00001		
1460125_at	Ccdc141	coiled-coil domain containing 141	1.57	0.00074		
1428277_at	Otud6b	OTU domain containing 6B	1.56	0		
1416318_at	Serpnb1a	serine (or cysteine) peptidase inhibitor, clade B, member 1a	1.56	0		
1437409_s_at	Gpr126	G protein-coupled receptor 126	1.56	0.00001		
1424567_at	Tspan2	tetraspanin 2	1.56	0.00013	Yes	83
1427446_s_at	Ttn	titin	1.56	0.00005		
	2610306M01					
1452988_at	Rik	RIKEN cDNA 2610306M01 gene	1.56	0.0002	Yes	1093
1434479_at	Col5a1	collagen, type V, alpha 1	1.56	0	Yes	112
1440559_at	Hmga2-ps1	high mobility group AT-hook 2, pseudogene 1	1.56	0.00002		
1452352_at	Ctla2b	cytotoxic T lymphocyte-associated protein 2 beta	1.55	0.00166		
1459850_x_at	Glrb	glycine receptor, beta subunit	1.55	0.00003		
1416985_at	Sirpa	signal-regulatory protein alpha	1.55	0.00001		
1450625_at	Col5a2	collagen, type V, alpha 2	1.55	0.00001		
1439364_a_at	Mmp2	matrix metallopeptidase 2	1.55	0.00001		
1456739_x_at	Armxc2	armadillo repeat containing, X-linked 2	1.55	0.00004		
1416735_at	Asah1	N-acylsphingosine amidohydrolase 1	1.55	0		
1423110_at	Col1a2	collagen, type I, alpha 2	1.55	0	Yes	1791
1424289_at	Osgin2	oxidative stress induced growth inhibitor family member 2	1.55	0	Yes	-1317
	1110067D22					
1451313_a_at	Rik	RIKEN cDNA 1110067D22 gene	1.54	0.00002		
1455316_x_at	BC094435	cDNA sequence BC094435	1.54	0		
1448269_a_at	Klhl13	kelch-like 13 (Drosophila)	1.54	0.00022		
1435713_at	Mettl2	methyltransferase like 2	1.54	0.00004		
1439606_at	Katnal1	katanin p60 subunit A-like 1	1.53	0.00007		
1418417_at	Msc	musculin	1.53	0.00012	Yes	2139
1453304_s_at	Ly6e	lymphocyte antigen 6 complex, locus E	1.53	0.00001	Yes	557
1415863_at	Eif4g2	eukaryotic translation initiation factor 4, gamma 2	1.53	0.00001		
1423309_at	Tgoln1	trans-golgi network protein	1.53	0.00003		
1437016_x_at	Rap2c	RAP2C, member of RAS oncogene family	1.53	0		
1455070_at	Dcp2	DCP2 decapping enzyme homolog (S. cerevisiae)	1.53	0.00002		
1433887_at	Dnajc3	DnaJ (Hsp40) homolog, subfamily C, member 3	1.53	0.00001		
1417273_at	Pdk4	pyruvate dehydrogenase kinase, isoenzyme 4	1.53	0.00001		
1421217_a_at	Lgals9	lectin, galactose binding, soluble 9	1.53	0		
1455121_at	Lcor	ligand dependent nuclear receptor corepressor	1.52	0.00005		
1428103_at	Adam10	a disintegrin and metallopeptidase domain 10	1.52	0.00001	Yes	-327
1433864_at	Lrp12	low density lipoprotein-related protein 12	1.52	0.00008		
1428715_at	Gfpt1	glutamine fructose-6-phosphate transaminase 1	1.52	0		
1417675_a_at	Mdn1	midasin homolog (yeast)	1.52	0		
1422668_at	Serpnb9b	serine (or cysteine) peptidase inhibitor, clade B, member 9b	1.52	0	Yes	876

1441994_at	Pcdhb16	protocadherin beta 16	1.52	0.00025		
1416432_at	Pfkfb3	6-phosphofructo-2-kinase/fructose-2,6-biphosphatase 3	1.52	0.00001		
1452214_at	Skil	SKI-like	1.52	0	Yes	-607
1419220_at	Xirp1	xin actin-binding repeat containing 1	1.52	0.0009	Yes	-67
1448706_at	Tdp2	tyrosyl-DNA phosphodiesterase 2	1.52	0.00002		
1424215_at	Fundc1	FUN14 domain containing 1	1.51	0.00001		
1427306_at	Ryr1	ryanodine receptor 1, skeletal muscle	1.51	0.00072	Yes	-2371
1448593_at	Wisp1	WNT1 inducible signaling pathway protein 1	1.51	0.00509	Yes	223
1416427_at	Ccni	cyclin I	1.51	0.00002		
1442348_at	Katnal1	katanin p60 subunit A-like 1	1.51	0.00012		
1440815_x_at	Gm8267	predicted gene 8267	1.51	0.0002		
1433924_at	Peg3	paternally expressed 3	1.51	0.00001		
1433502_s_at	Tsr1	TSR1, 20S rRNA accumulation, homolog (yeast)	1.51	0.00002	Yes	-682
1441315_s_at	Slc19a2	solute carrier family 19 (thiamine transporter), member 2	1.51	0.00012		
1416907_at	Tsn	translin	1.51	0.00004		
1426570_a_at	Frk	fyn-related kinase	1.51	0.00088	Yes	-444
1457825_x_at	Tcn2	transcobalamin 2	1.51	0	Yes	-2388
1428899_at	Tmem182	transmembrane protein 182	1.51	0.00046		
1417254_at	Spata5	spermatogenesis associated 5	1.51	0.00035	Yes	-552
1436736_x_at	D0H4S114	DNA segment, human D4S114	1.50	0.00071		
1430034_at	Cct4	chaperonin containing Tcp1, subunit 4 (delta)	1.50	0.00003	Yes	-46
1448237_x_at	Ldhd	lactate dehydrogenase B	1.50	0.00001		

^a: MyoD binding analysis based on the MyoD ChIP-Seq data (SRA: SRX016191) in undifferentiated C2C12 myoblast [Cao Y. et.al. *Dev Cell*. 2010], genes with MyoD binding in promoter region (+/- 5000bp to TSS) are defined as direct MyoD targets

Table S3. A list of genes showed down-regulated expression in Sfbmt1-knockdown C2C12 cells

probeID	Gene Symbol	Gene Title	Fold-change	p-value
1418188_a_at	Malat1	metastasis associated lung adenocarcinoma transcript 1 (non-coding RNA)	-3.77	0.00018
1448747_at	Fbxo32	F-box protein 32	-3.34	0
1451020_at	Gsk3b	glycogen synthase kinase 3 beta	-3.33	0
1420908_at	Cd2ap	CD2-associated protein	-3.31	0
1448733_at	Bmi1	Bmi1 polycomb ring finger oncogene	-3.26	0
1437554_at	Plec	plectin	-3.24	0.00004
1453997_a_at	Nes	nestin	-3.17	0.00003
1425357_a_at	Grem1	gremlin 1	-2.85	0.00001
1416200_at	Il33	interleukin 33	-2.83	0
1451071_a_at	Atp1a1	ATPase, Na ⁺ /K ⁺ transporting, alpha 1 polypeptide	-2.82	0
1417403_at	Elovl6	ELOVL family member 6, elongation of long chain fatty acids (yeast)	-2.77	0
1419459_a_at	Magt1	magnesium transporter 1	-2.65	0
1450651_at	Myo10	myosin X	-2.54	0
1450051_at	Atrx	alpha thalassemia/mental retardation syndrome X-linked homolog (human)	-2.50	0.00013
1452670_at	Myl9	myosin, light polypeptide 9, regulatory	-2.49	0
1429434_at	Pik3ca	phosphatidylinositol 3-kinase, catalytic, alpha polypeptide	-2.47	0
1448525_a_at	Bnip3l	BCL2/adenovirus E1B interacting protein 3-like	-2.43	0
1457281_at	Dnajc21	DnaJ (Hsp40) homolog, subfamily C, member 21	-2.39	0
1436343_at	Chd4	chromodomain helicase DNA binding protein 4	-2.36	0.00002
1415802_at	Slc16a1	solute carrier family 16 (monocarboxylic acid transporters), member 1	-2.35	0
1439122_at	Ddx6	DEAD (Asp-Glu-Ala-Asp) box polypeptide 6	-2.34	0.00001
1436158_at	Eif4ebp2	eukaryotic translation initiation factor 4E binding protein 2	-2.27	0
1455102_at	Larp4	La ribonucleoprotein domain family, member 4	-2.24	0
1439037_at	Ddx17	DEAD (Asp-Glu-Ala-Asp) box polypeptide 17	-2.22	0
1458802_at	Hivp3	human immunodeficiency virus type I enhancer binding protein 3	-2.22	0
1450071_at	Ash1l	ash1 (absent, small, or homeotic)-like (Drosophila)	-2.19	0
1423154_at	BC005537	cDNA sequence BC005537	-2.18	0
1451100_a_at	Cdv3	carnitine deficiency-associated gene expressed in ventricle 3	-2.18	0
1458385_at	Hspa4l	heat shock protein 4 like	-2.17	0
1424572_a_at	H2afy	H2A histone family, member Y	-2.17	0
1458226_at	Flnb	filamin, beta	-2.15	0
1423501_at	Max	Max protein	-2.13	0.00018
1453504_at	Taf15	TAF15 RNA polymerase II, TATA box binding protein (TBP)-associated factor	-2.13	0
1429658_a_at	Smc2	structural maintenance of chromosomes 2	-2.12	0.00006
1438833_at	Casc5	cancer susceptibility candidate 5	-2.11	0.00393
1427488_a_at	Birc6	baculoviral IAP repeat-containing 6	-2.11	0.00017
1422894_at	Sfbmt1	Scm-like with four mbt domains 1	-2.11	0
1436188_a_at	Ndrp4	N-myc downstream regulated gene 4	-2.09	0
1450767_at	Nedd9	neural precursor cell expressed, developmentally down-regulated gene 9	-2.09	0
1427067_at	Rik	RIKEN cDNA 4933439F18 gene	-2.08	0
1417623_at	Slc12a2	solute carrier family 12, member 2	-2.06	0.00004
1423249_at	Nktr	natural killer tumor recognition sequence	-2.04	0.00042
1460729_at	Rock1	Rho-associated coiled-coil containing protein kinase 1	-2.04	0
1435265_at	98	hypothetical LOC100504698	-2.03	0
1431254_at	Kbtbd11	kelch repeat and BTB (POZ) domain containing 11	-2.02	0
1421431_at	Ptrf	polymerase I and transcript release factor	-2.02	0
1416555_at	Ei24	etoposide induced 2.4 mRNA	-2.02	0
1449311_at	Bach1	BTB and CNC homology 1	-2.02	0
1442367_at	Atp11c	ATPase, class VI, type 11C	-2.01	0.00002
1424768_at	Cald1	caldesmon 1	-2.01	0
1419055_a_at	Ptpn21	protein tyrosine phosphatase, non-receptor type 21	-2.00	0.00001
1438201_at	Pdp1	pyruvate dehydrogenase phosphatase catalytic subunit 1	-2.00	0
1441897_at	Rik	RIKEN cDNA B230120H23 gene	-2.00	0.00002
1417719_at	Sap30	sin3 associated polypeptide	-1.99	0
1426892_at	Utrn	utrophin	-1.99	0.00048
1422490_at	Bnip2	BCL2/adenovirus E1B interacting protein 2	-1.98	0
1456361_at	Afap1	actin filament associated protein 1	-1.98	0.00365
1451437_at	Zdhhc20	zinc finger, DHHC domain containing 20	-1.97	0.00002
1418043_at	Abcc5	ATP-binding cassette, sub-family C (CFTR/MRP), member 5	-1.97	0.00007
1454769_at	Tatdn2	TatD DNase domain containing 2	-1.95	0
1419037_at	Csnk2a1	casein kinase 2, alpha 1 polypeptide	-1.95	0.00741

1427414_at	Prkar2a	protein kinase, cAMP dependent regulatory, type II alpha	-1.94	0
1431395_a_at	Iqgap1	IQ motif containing GTPase activating protein 1	-1.94	0.00003
1451458_at	Tmem2	transmembrane protein 2	-1.93	0
	2410089E03			
1443691_at	Rik	RIKEN cDNA 2410089E03 gene	-1.93	0.00004
1452942_at	Tmem65	transmembrane protein 65	-1.93	0
1449292_at	Rb1cc1	RB1-inducible coiled-coil 1	-1.92	0.0004
1438160_x_at	Slco4a1	solute carrier organic anion transporter family, member 4a1	-1.92	0
1438686_at	Eif4g1	eukaryotic translation initiation factor 4, gamma 1	-1.92	0.00107
1424254_at	Ifitm1	interferon induced transmembrane protein 1	-1.90	0
1427267_at	Tnrc18	trinucleotide repeat containing 18	-1.90	0.00046
1416524_at	Spop	speckle-type POZ protein	-1.90	0
1424708_at	Tmed10	transmembrane emp24-like trafficking protein 10 (yeast)	-1.89	0
1455998_at	Zbed6	zinc finger, BED domain containing 6	-1.89	0.00027
		nucleus accumbens associated 1, BEN and BTB (POZ) domain containing		
1433140_a_at	Nacc1		-1.89	0
1416253_at	Cdkn2d	cyclin-dependent kinase inhibitor 2D (p19, inhibits CDK4)	-1.89	0
1416572_at	Mmp14	matrix metalloproteinase 14 (membrane-inserted)	-1.88	0.00001
		sema domain, seven thrombospondin repeats (type 1 and type 1-like), transmembrane domain (TM) and short cytoplasmic domain,		
1437422_at	Sema5a	(semaphorin) 5A	-1.88	0
1442802_x_at	Bat2	HLA-B associated transcript 2	-1.88	0.00002
1458447_at	Cenpf	centromere protein F	-1.88	0.00002
1436954_at	Wipf1	WAS/WASL interacting protein family, member 1	-1.87	0
1419728_at	Cxcl5	chemokine (C-X-C motif) ligand 5	-1.87	0.00004
1432164_a_at	Gcsh	glycine cleavage system protein H (aminomethyl carrier)	-1.87	0
1418573_a_at	Raly	hnRNP-associated with lethal yellow	-1.86	0.0002
1423241_a_at	Tfdp1	transcription factor Dp 1	-1.86	0
1460498_a_at	Dnajc5	DnaJ (Hsp40) homolog, subfamily C, member 5	-1.85	0.00002
1436223_at	Itgb8	integrin beta 8	-1.85	0
1435184_at	Npr3	natriuretic peptide receptor 3	-1.84	0
1452292_at	Ap2b1	adaptor-related protein complex 2, beta 1 subunit	-1.84	0.00109
1424025_at	BC013529	cDNA sequence BC013529	-1.84	0
		SWI/SNF related, matrix associated, actin dependent regulator of chromatin, subfamily a, member 5		
1424207_at	Smarca5		-1.83	0.00001
1423184_at	Itns2	intersectin 2	-1.83	0.00035
1432349_a_at	Sync	syncoilin	-1.81	0.00289
1438771_at	Brd1	bromodomain containing 1	-1.81	0.00041
1425166_at	Rbl1	retinoblastoma-like 1 (p107)	-1.81	0.00006
1421453_at	Jph2	junctophilin 2	-1.81	0
1422910_s_at	Smc6	structural maintenance of chromosomes 6	-1.80	0.00012
1443832_s_at	Sdpr	serum deprivation response	-1.79	0.00001
1429172_a_at	Ncapg	non-SMC condensin I complex, subunit G	-1.79	0.00001
1416154_at	Srp54a	signal recognition particle 54A	-1.78	0.00035
		elongation of very long chain fatty acids (FEN1/Elo2, SUR4/Elo3, yeast)-like 4		
1424306_at	Elovl4		-1.78	0
1438246_at	Csnk1g1	casein kinase 1, gamma 1	-1.78	0.00015
1419416_a_at	Rarg	retinoic acid receptor, gamma	-1.78	0
1450035_a_at	Prpf40a	PRP40 pre-mRNA processing factor 40 homolog A (yeast)	-1.78	0.00005
1430216_at	Zfp292	zinc finger protein 292	-1.78	0.00069
1415988_at	Hdlbp	high density lipoprotein (HDL) binding protein	-1.78	0
1436970_a_at	Pdgfrb	platelet derived growth factor receptor, beta polypeptide	-1.78	0
1431213_a_at	Gm3579	predicted gene 3579	-1.77	0
1418911_s_at	Acsl4	acyl-CoA synthetase long-chain family member 4	-1.77	0
1433960_at	Isg20l2	interferon stimulated exonuclease gene 20-like 2	-1.77	0
1449325_at	Fads2	fatty acid desaturase 2	-1.77	0
1421032_a_at	Dnajb12	DnaJ (Hsp40) homolog, subfamily B, member 12	-1.76	0.00004
1424077_at	Gdpd1	glycerophosphodiester phosphodiesterase domain containing 1	-1.76	0
1427688_a_at	Ptprs	protein tyrosine phosphatase, receptor type, S	-1.76	0
1427665_a_at	Nfic	nuclear factor I/C	-1.76	0.00376
1418127_a_at	Aifm1	apoptosis-inducing factor, mitochondrion-associated 1	-1.76	0
1433719_at	Slc9a9	solute carrier family 9 (sodium/hydrogen exchanger), member 9	-1.75	0
1429432_at	Bat2l2	HLA-B associated transcript 2-like 2	-1.75	0.00014
1441520_at	Aspm	asp (abnormal spindle)-like, microcephaly associated (Drosophila)	-1.75	0.00032
1449556_at	H2-T23	histocompatibility 2, T region locus 23	-1.75	0
	1110001A16			
1435755_at	Rik	RIKEN cDNA 1110001A16 gene	-1.75	0.00001
1422571_at	Thbs2	thrombospondin 2	-1.75	0
1417978_at	Eif4e3	eukaryotic translation initiation factor 4E member 3	-1.74	0.00001
1455034_at	Nr4a2	nuclear receptor subfamily 4, group A, member 2	-1.74	0.00002
1459869_x_at	Pdpr	pyruvate dehydrogenase phosphatase regulatory subunit	-1.73	0
1456110_at	Ankrd11	ankyrin repeat domain 11	-1.73	0.00058

1443923_at	Akap13	A kinase (PRKA) anchor protein 13	-1.73	0.00074
1444319_at	E2f8	E2F transcription factor 8	-1.73	0.00001
1427764_a_at	Tcf3	transcription factor 3	-1.73	0
1448623_at	Tmem123	transmembrane protein 123	-1.73	0
1425014_at	Nr2c2	nuclear receptor subfamily 2, group C, member 2	-1.72	0
1442072_at	Rik	RIKEN cDNA C230081A13 gene	-1.72	0.00001
1422313_a_at	Igfbp5	insulin-like growth factor binding protein 5	-1.72	0
1434601_at	Amigo2	adhesion molecule with Ig like domain 2	-1.72	0.00001
1456503_at	Nup214	nucleoporin 214	-1.71	0.00009
1452722_a_at	Cul5	cullin 5	-1.71	0.00009
1426255_at	Nefl	neurofilament, light polypeptide	-1.71	0
1418288_at	Lpin1	lipin 1	-1.71	0.00001
1429679_at	Lrrc17	leucine rich repeat containing 17	-1.71	0
1426933_at	Oxsr1	oxidative-stress responsive 1	-1.71	0
1434131_at	Rufy1	RUN and FYVE domain containing 1	-1.70	0
1426326_at	Zfp91	zinc finger protein 91	-1.70	0.00001
1416038_at	Snd1	staphylococcal nuclease and tudor domain containing 1	-1.70	0
1451793_at	Klhl24	kelch-like 24 (Drosophila)	-1.70	0.00008
1438798_at	Rik	RIKEN cDNA 4931406P16 gene	-1.69	0.00024
1451771_at	Tpcn1	two pore channel 1	-1.69	0.00003
1424024_at	Mcf2	multiple coagulation factor deficiency 2	-1.69	0
1448016_at	Sass6	spindle assembly 6 homolog (C. elegans)	-1.69	0
1429088_at	Lbh	limb-bud and heart	-1.69	0.00001
1450068_at	Baz1b	bromodomain adjacent to zinc finger domain, 1B	-1.69	0.002
1457009_at	Rhobtb3	Rho-related BTB domain containing 3	-1.68	0.00001
1444016_at	Anxa1	annexin A1	-1.68	0.00061
1451920_a_at	Rfc1	replication factor C (activator 1) 1	-1.68	0.00005
1437657_at	Scaper	S phase cyclin A-associated protein in the ER	-1.67	0.00006
1450378_at	Tapbp	TAP binding protein	-1.67	0.00001
1425481_at	Cnot6l	CCR4-NOT transcription complex, subunit 6-like	-1.67	0.00001
1438658_a_at	S1pr3	sphingosine-1-phosphate receptor 3	-1.67	0.0004
1455089_at	Gng12	guanine nucleotide binding protein (G protein), gamma 12	-1.67	0
1423886_at	Lamc1	laminin, gamma 1	-1.67	0.00008
1424350_s_at	Lpgat1	lysophosphatidylglycerol acyltransferase 1	-1.67	0.00008
1428174_x_at	Khsrp	KH-type splicing regulatory protein	-1.67	0
1451200_at	Kif1b	kinesin family member 1B	-1.67	0.00006
1418129_at	Dhcr24	24-dehydrocholesterol reductase	-1.66	0.00027
1422987_at	Ntn1	netrin 1	-1.66	0.00007
1415965_at	Scd1	stearoyl-Coenzyme A desaturase 1	-1.66	0.00001
1434441_at	ik	RIKEN cDNA 1110018J18 gene	-1.66	0
1438099_at	Trio	triple functional domain (PTPRF interacting)	-1.66	0.00003
1419497_at	Cdkn1b	cyclin-dependent kinase inhibitor 1B	-1.66	0.00005
1449405_at	Tns1	tensin 1	-1.65	0
1425991_a_at	Kank2	KN motif and ankyrin repeat domains 2	-1.65	0.00028
1434282_at	Ibtk	inhibitor of Bruton agammaglobulinemia tyrosine kinase	-1.65	0.00006
1417951_at	Eno3	enolase 3, beta muscle	-1.64	0
1419356_at	Klf7	Kruppel-like factor 7 (ubiquitous)	-1.64	0.00001
1422748_at	Zeb2	zinc finger E-box binding homeobox 2	-1.64	0.00062
1421411_at	Pstpip2	proline-serine-threonine phosphatase-interacting protein 2	-1.63	0
1426235_a_at	Glul	glutamate-ammonia ligase (glutamine synthetase)	-1.63	0.00034
1450953_at	Ciao1	cytosolic iron-sulfur protein assembly 1 homolog (S. cerevisiae)	-1.63	0
1439040_at	Cenpe	centromere protein E	-1.63	0.00321
1448710_at	Cxcr4	chemokine (C-X-C motif) receptor 4	-1.63	0
1444058_at	Dzip3	DAZ interacting protein 3, zinc finger	-1.63	0.00077
1455884_at	Dpp9	dipeptidylpeptidase 9	-1.63	0.00001
1440857_at	Cad	carbamoyl-phosphate synthetase 2, aspartate transcarbamylase, and dihydroorotase	-1.63	0
1449512_a_at	Zfx	zinc finger protein X-linked	-1.63	0.0115
1434149_at	Tcf4	transcription factor 4	-1.63	0.00001
1429385_at	Dcaf7	DDB1 and CUL4 associated factor 7	-1.63	0.00005
1423520_at	Lmnb1	lamin B1	-1.63	0.00001
1456341_a_at	Klf9	Kruppel-like factor 9	-1.63	0.0019
1453295_at	Asxl2	additional sex combs like 2 (Drosophila)	-1.62	0.00222
1417161_at	Cdk2ap2	CDK2-associated protein 2	-1.62	0
1419277_at	Usp48	ubiquitin specific peptidase 48	-1.62	0.00025
1422170_at	Slc5a3	solute carrier family 5 (inositol transporters), member 3	-1.62	0.00007
1433571_at	Serinc5	serine incorporator 5	-1.62	0.00001
1416516_at	Fscn1	fascin homolog 1, actin bundling protein (Strongylocentrotus purpuratus)	-1.62	0.00004

		cysteine and histidine-rich domain (CHORD)-containing, zinc-binding protein 1	-1.62	0
1460645_at	Chordc1	ubiquitin specific peptidase 7	-1.61	0.00038
1437118_at	Usp7	phorbol-12-myristate-13-acetate-induced protein 1	-1.61	0.00003
1418203_at	Pmaip1	PDZ and LIM domain 5	-1.61	0
1450786_x_at	Pdlim5	calcineurin binding protein 1	-1.61	0.00067
1437794_at	Cabin1	ST3 beta-galactoside alpha-2,3-sialyltransferase 1	-1.61	0
1418946_at	St3gal1	topoisomerase (DNA) II beta	-1.61	0.00001
1448458_at	Top2b	bromodomain PHD finger transcription factor	-1.61	0.00223
1427311_at	Bptf	coiled-coil domain containing 109A	-1.61	0.00004
1442031_at	Ccdc109a	translocated promoter region	-1.61	0.00057
1456112_at	Tpr	ArfGAP with SH# domain, ankyrin repeat and PH domain 1	-1.61	0.00005
1425573_a_at	Asap1	carbonyl reductase 2	-1.61	0
1418509_at	Cbr2	hect (homologous to the E6-AP (UBE3A) carboxyl terminus) domain and RCC1 (CHC1)-like domain (RLD) 1	-1.60	0.01036
1440437_at	Herc1	structural maintenance of chromosomes 1A	-1.60	0.00008
1417831_at	Smc1a	MyoD family inhibitor domain containing	-1.60	0.00002
1427040_at	Mdfic	transmembrane protein 48	-1.60	0
1460353_at	Tmem48	junction-mediating and regulatory protein	-1.60	0.00043
1451878_a_at	Jmy	ethanolamine kinase 1	-1.60	0.00057
1430996_at	Etnk1	avian musculoaponeurotic fibrosarcoma (v-maf) AS42 oncogene homolog	-1.60	0.00002
1456060_at	Maf	lysine (K)-specific demethylase 5A	-1.60	0.00334
1452360_a_at	Kdm5a	growth arrest specific 1	-1.60	0.00004
1448494_at	Gas1	SLIT-ROBO Rho GTPase activating protein 3	-1.60	0.0003
1425741_at	Srgap3	Musashi homolog 2 (Drosophila)	-1.60	0.00003
1421230_a_at	Msi2	dual-specificity tyrosine-(Y)-phosphorylation regulated kinase 2	-1.59	0
1428637_at	Dyrk2	leucine-rich repeat kinase 1	-1.59	0.00008
1437330_at	Lrrk1	lamin B2	-1.59	0.00041
1451849_a_at	LmnB2	chromobox homolog 5 (Drosophila HP1a)	-1.59	0.00012
1421933_at	Cbx5	Rap guanine nucleotide exchange factor (GEF) 1	-1.59	0.00018
1421146_at	Rapgef1	amyloid beta precursor protein (cytoplasmic tail) binding protein 2	-1.59	0.00007
1434039_at	Appbp2	ArfGAP with coiled-coil, ankyrin repeat and PH domains 2	-1.59	0.00001
1433561_at	Acap2	zinc finger protein 664	-1.59	0.00003
1437047_at	Zfp664	regulation of nuclear pre-mRNA domain containing 2	-1.59	0.0002
1431425_a_at	Rprd2	heterogeneous nuclear ribonucleoprotein A/B	-1.59	0.00976
1426114_at	Hnrrnpab	ubiquitin specific peptidase 1	-1.58	0.00006
1423674_at	Usp1	serine/arginine repetitive matrix 2	-1.58	0.00039
1427902_at	Srrm2	CREB binding protein	-1.58	0.00952
1459804_at	Crebbp	toll-like receptor 4	-1.58	0.00186
1442827_at	Tlr4	ankyrin repeat and BTB (POZ) domain containing 2	-1.58	0.00039
1433453_a_at	Abtb2	dedicator of cytokinesis 5	-1.58	0.00001
1439129_at	Dock5	ankyrin repeat and SOCs box-containing 5	-1.58	0
1449356_at	Asb5	vacuolar protein sorting 13B (yeast)	-1.58	0.00124
1430801_at	Vps13b	Rho GTPase activating protein 18	-1.58	0
1431133_at	Arhgap18	mediator complex subunit 13	-1.58	0.00455
1436904_at	Med13	zinc finger, CCHC domain containing 24	-1.57	0.00001
1428432_at	Zcchc24	sarcolemma associated protein	-1.57	0.00065
1426458_at	Slmap	zinc finger protein 617	-1.57	0.00002
1449546_a_at	Zfp617	upstream binding transcription factor, RNA polymerase I	-1.57	0.00004
1460304_a_at	Ubtf	fragile X mental retardation syndrome 1 homolog	-1.57	0.00008
1426086_a_at	Fmr1	mitochondrial carrier homolog 2 (C. elegans)	-1.57	0.00012
1430969_at	Mtch2	thioredoxin reductase 1	-1.57	0.00017
1424487_x_at	Txnrd1	solute carrier organic anion transporter family, member 3a1	-1.57	0
1418030_at	Slco3a1	thymopoietin	-1.57	0.00024
1426020_at	Tmpo	D17H6S56E-5	-1.57	0.00001
1417821_at	5	DNA segment, Chr 17, human D6S56E 5	-1.57	0.00476
1420973_at	Arid5b	AT rich interactive domain 5B (MRF1-like)	-1.57	0.00017
1444295_at	Neo1	neogenin	-1.56	0.00025
1452180_at	Phf17	PHD finger protein 17	-1.56	0.00001
1422340_a_at	Actg2	actin, gamma 2, smooth muscle, enteric	-1.56	0.00046
1456088_at	Xiap	X-linked inhibitor of apoptosis	-1.56	0.00036
1429362_a_at	Sf3b2	splicing factor 3b, subunit 2	-1.56	0.00004
1418890_a_at	Rab3d	RAB3D, member RAS oncogene family	-1.56	0
1456533_at	Dpy19l1	dpy-19-like 1 (C. elegans)	-1.56	0.00001
1454289_at	Zhx3	zinc fingers and homeoboxes 3	-1.56	0.00029
1423015_at	Kirrel	kin of IRRE like (Drosophila)	-1.55	0
1427992_a_at	Rab12	RAB12, member RAS oncogene family	-1.55	0.00007
1450255_at	Arhgap31	Rho GTPase activating protein 31	-1.55	0.00002
1427884_at	Col3a1	collagen, type III, alpha 1	-1.55	0.02103
1426755_at	Ckap4	cytoskeleton-associated protein 4	-1.55	

1451287_s_at	Aif1	allograft inflammatory factor 1-like	-1.55	0.00002
1437864_at	Adipor2	adiponectin receptor 2	-1.55	0.00069
1455960_at	Megf9	multiple EGF-like-domains 9	-1.54	0.00002
1426686_s_at	Map3k3	mitogen-activated protein kinase kinase kinase 3	-1.54	0
1436356_at	Samd4	sterile alpha motif domain containing 4	-1.54	0.00004
1423756_s_at	Igfbp4	insulin-like growth factor binding protein 4	-1.54	0.00003
1427353_at	Clasp1	CLIP associating protein 1	-1.54	0.00002
1419099_x_at	Stom	stomatin	-1.54	0.00002
1439555_at	Rlf	rearranged L-myc fusion sequence	-1.54	0.00088
1428971_at	Ccny	cyclin Y	-1.54	0.00003
1452038_at	Capza1	capping protein (actin filament) muscle Z-line, alpha 1	-1.54	0
	6330406I15R			
1426937_at	ik	RIKEN cDNA 6330406I15 gene	-1.54	0.00001
1416625_at	Serping1	serine (or cysteine) peptidase inhibitor, clade G, member 1	-1.53	0.00016
1449042_at	Ctcf	CCCTC-binding factor	-1.53	0.00634
1452703_at	Ahcyl2	S-adenosylhomocysteine hydrolase-like 2	-1.53	0.00002
1418514_at	Mtf2	metal response element binding transcription factor 2	-1.53	0.00001
1421319_at	Ptgfrn	prostaglandin F2 receptor negative regulator	-1.53	0.0001
	4932438A13			
1458401_at	Rik	RIKEN cDNA 4932438A13 gene	-1.53	0.00002
1429517_at	Zfyve20	zinc finger, FYVE domain containing 20	-1.53	0.00033
1434877_at	Nptx1	neuronal pentraxin 1	-1.53	0.00002
1440868_at	Gabpb2	GA repeat binding protein, beta 2	-1.53	0.00089
1456488_at	Wdr33	WD repeat domain 33	-1.53	0.00046
1451411_at	Gprc5b	G protein-coupled receptor, family C, group 5, member B	-1.53	0.00006
	LOC1005048			
1444281_at	41	hypothetical LOC100504841	-1.53	0.00261
1440397_at	Cacna2d1	calcium channel, voltage-dependent, alpha2/delta subunit 1	-1.53	0.00099
1426744_at	Srebf2	sterol regulatory element binding factor 2	-1.52	0.00013
1418731_at	Rlim	ring finger protein, LIM domain interacting	-1.52	0.00002
1438046_at	AU019823	expressed sequence AU019823	-1.52	0.00008
1451045_at	Syt13	synaptotagmin XIII	-1.52	0.00007
1424216_a_at	Papola	poly (A) polymerase alpha	-1.52	0.00027
1426259_at	Pank3	pantothenate kinase 3	-1.52	0.00276
1453582_at	Chka	choline kinase alpha	-1.52	0.00012
1443868_at	Atp13a3	ATPase type 13A3	-1.52	0.00005
1450629_at	Lima1	LIM domain and actin binding 1	-1.51	0.00042
1448008_at	Ankhd1	ankyrin repeat and KH domain containing 1	-1.51	0.00028
		SWI/SNF related, matrix associated, actin dependent regulator of		
1423417_at	Smarcc1	chromatin, subfamily c, member 1	-1.51	0.00024
1427918_a_at	Rhoq	ras homolog gene family, member Q	-1.51	0
1438773_at	Steap2	six transmembrane epithelial antigen of prostate 2	-1.51	0.00003
	1810030O07			
1433867_at	Rik	RIKEN cDNA 1810030O07 gene	-1.51	0
1427279_at	Clip4	CAP-GLY domain containing linker protein family, member 4	-1.51	0.00002
1423505_at	Tagln	transgelin	-1.51	0.00004
1451747_a_at	Atg12	autophagy-related 12 (yeast)	-1.51	0.00001
1422032_a_at	Zfand6	zinc finger, AN1-type domain 6	-1.51	0.00001
1438032_at	Lrch1	leucine-rich repeats and calponin homology (CH) domain containing 1	-1.51	0.00016
1425592_at	Tnpo2	transportin 2 (importin 3, karyopherin beta 2b)	-1.50	0.00004
1419502_at	Ghdc	GH3 domain containing	-1.50	0.00001
1450377_at	Thbs1	thrombospondin 1	-1.50	0.00005