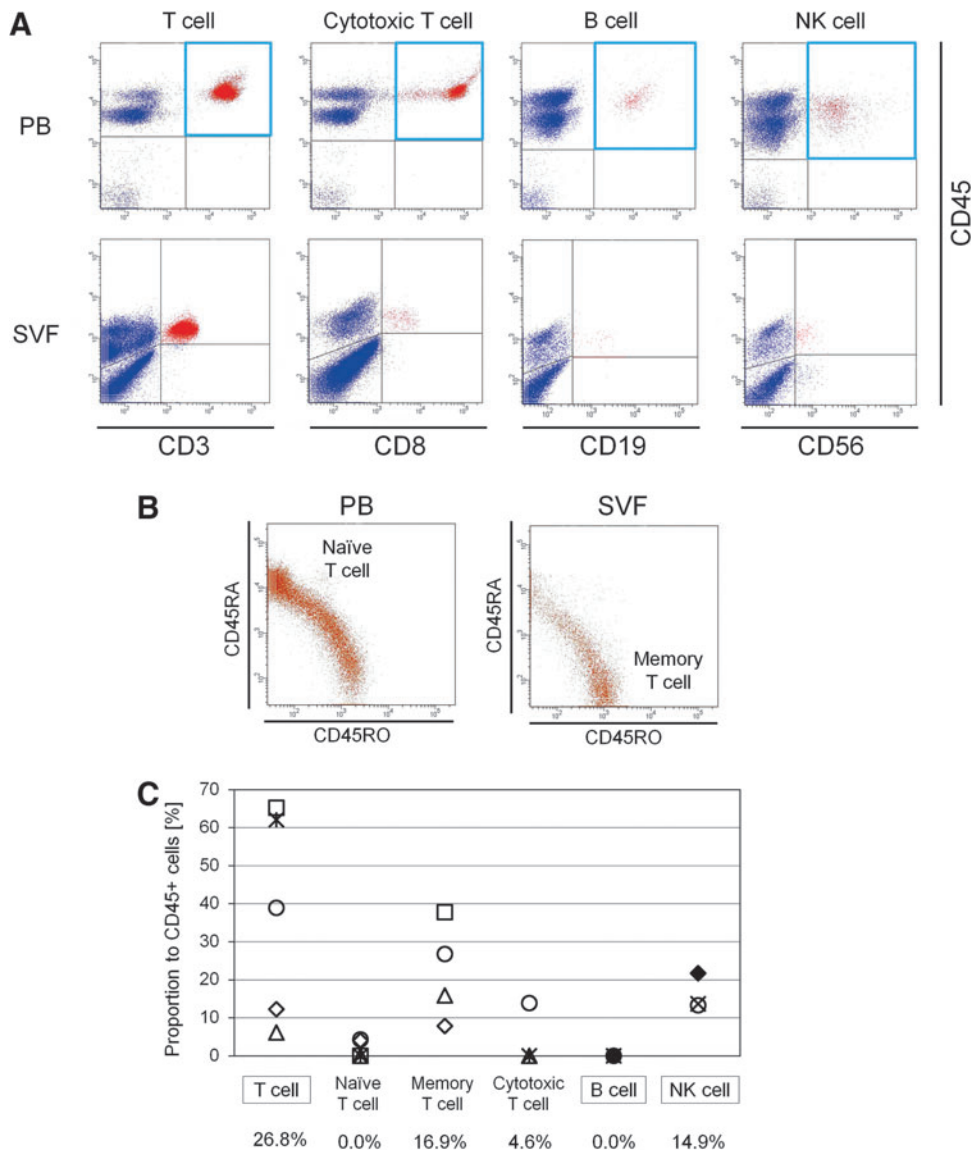


Supplementary Data



SUPPLEMENTARY FIG. S1. Cellular composition of adipose tissue (AT)-resident lymphocytes. **(A)** Flow cytometric analysis of lymphocytes in peripheral blood (PB) and stromal vascular fraction (SVF) from aspirated AT of nonobese human. Cells were stained for CD45 and one of the following surface markers, CD3 (T cells), CD8 (cytotoxic T cells), CD19 (B cells), or CD56 (NK cells). **(B)** Flow cytometric analysis for CD45RA and CD45RO revealed that PB predominantly contains naïve T cells (CD45RA⁺), although SVF contains many memory T cells (CD45RO⁺), suggesting that memory T cells are a main AT-resident lymphocyte population. **(C)** Cellular composition of each lymphocyte population residing in intact AT was calculated for a rough estimation. T cells, predominantly memory T cells, constitute more than half of AT-resident lymphocytes and the rest are mostly composed of NK cells, but it was suggested that B lymphocytes do not reside in AT.