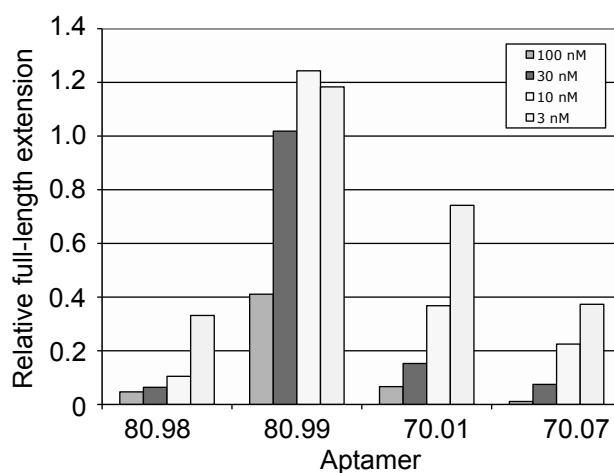


## Supplementary Figure S2

a



b

BEST (32)		VERY GOOD (31)		MODEST (22)		POOR (11)	
70.05	F1Pk	<sup>a</sup> 70.01	(6/5)AL	70.02	1,2	70.03	F1Pk
70.08	F2Pk	70.07	F2Pk	70.04	1,2		
70.12	F1Pk	70.17	F1Pk	70.06	F1Pk	80.01	F1Pk
70.13	F2Pk	70.24	1,2	70.14	1,2	80.10	other
70.16	F1Pk	70.31	F1Pk	70.15	F1Pk	80.13	other
70.21	1,2	70.42	F1Pk	70.18	F1Pk	80.16	other
70.22	F2Pk	70.52	1,2	70.19	other	80.28	other
70.26	F1Pk	70.54	F1Pk	70.27	1,2	80.68	F2Pk
70.28	F2Pk	70.59	1,2	70.41	F1Pk	80.70	other
70.29	F2Pk	70.65	F2Pk	70.75	1,2	80.71	other
70.32	F1Pk	70.67	F1Pk			80.97	F2Pk
70.44	1,2	70.68	F1Pk	80.02	1,2	80.101	other
70.53a	1,2	70.69	1,2	80.05	1,2		
70.60	other	70.70	F1Pk	80.09	F2Pk		
70.76a	F1Pk	70.71	F2Pk	80.18	1,2		
70.78	1,2	70.77	1,2	80.32	F2Pk		
				80.57	F1Pk		
80.02	1,2	80.33	other	80.61	other		
80.08	1,2	80.60	other	<sup>b</sup> 80.66	F2Pk*		
80.17	1,2	80.63	other	80.67	F1Pk		
80.35	F1Pk	80.73	F2Pk	80.69	F1Pk		
80.46	F1Pk	80.74	F2Pk	80.88	other		
80.54	1,2	80.75	1,2	80.99	other		
<sup>c</sup> 80.55	F2Pk*	80.77	other				
80.62	F2Pk	80.78	F1Pk				
80.64	F1Pk	80.79	other				
80.80	1,2	80.82	1,2				
80.85	1,2	80.86	1,2				
80.89	F1Pk	80.87	F2Pk				
80.93	other	80.90	1,2				
80.102	1,2	80.96	F1Pk				
80.103	other	80.98	F2Pk				
80.104	F2Pk						
80.105	1,2						
80.111	other						