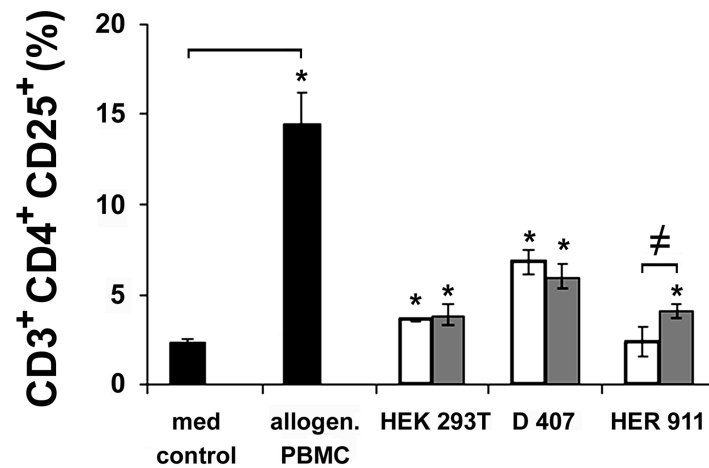
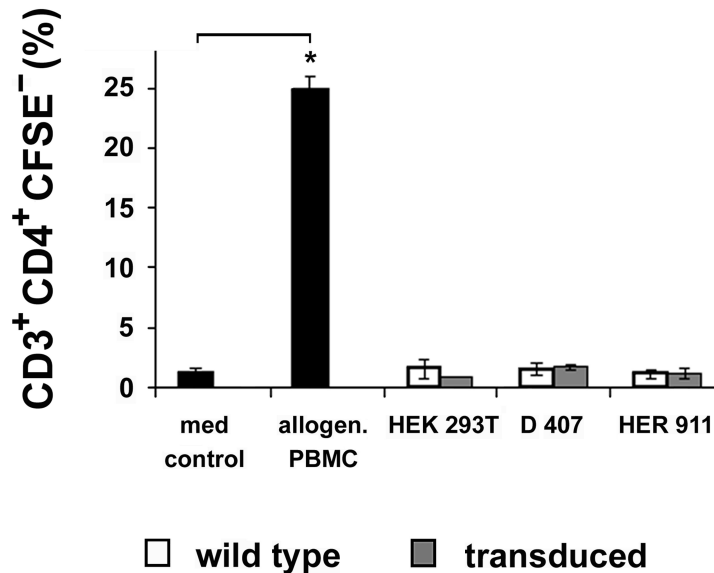


a ACTIVATION



b PROLIFERATION



Supplementary figure S2: Allogeneic immune responses to wt and transduced cells mediated by MHC class II. CSFE-labeled PBMCs were incubated with medium alone, or co-cultured with control allogeneic PBMCs, wt or transduced cells. (a) Activation of CD3⁺CD4⁺ T cells as determined by the expression of CD25. (b) Proliferation of CD3⁺CD4⁺ T cells as evaluated by determining the percentages of dividing T cells. Results are expressed as mean values \pm SD for three independent experiments each performed in triplicate at different times of culture (*p<0.05). Note: Control allogeneic PBMCs triggered large responses both in terms of activation and proliferation, as expected (positive control).