

Supplementary Figure Legends

Figure S1. Optimization of Sn-Fc pre-complexes binding to human RBCs. Sn-Fc complexed with goat anti-human IgG Fc specific at ratios of 10:1, 5:1, 2.5:1 and 1.25:1. Histograms demonstrate the binding of Sn-Fc pre-complexes to human RBCs. Sialidase treated RBCs were used as a negative control (red histogram).

Figure S2. IFN- α induces the expression of Sn on bone marrow-derived macrophages (BMDM). BMDM from wild-type mice were enriched with M-CSF for 7 days and then were either stimulated with IFN- α (black histogram) or left untreated (dotted histogram) for 3 days. Expression of Sn was analysed using biotinylated anti-Sn antibodies followed by secondary antibody, staining with secondary antibody only was used as a control (solid grey histogram).

Figure S3. Expression of apoptosis markers based on SnL status. A, Bcl-2 mRNA expression in SnL⁺ and SnL⁻ enriched CD4⁺ T cells. Surface expression of Fas (B) and FasL (C) in SnL⁺ and SnL⁻ CD4⁺ T cells. Solid grey histograms represent isotype controls; black line histograms represent SnL⁺ and dashed line histograms SnL⁻ CD4⁺ T cells, respectively.

Figure S1

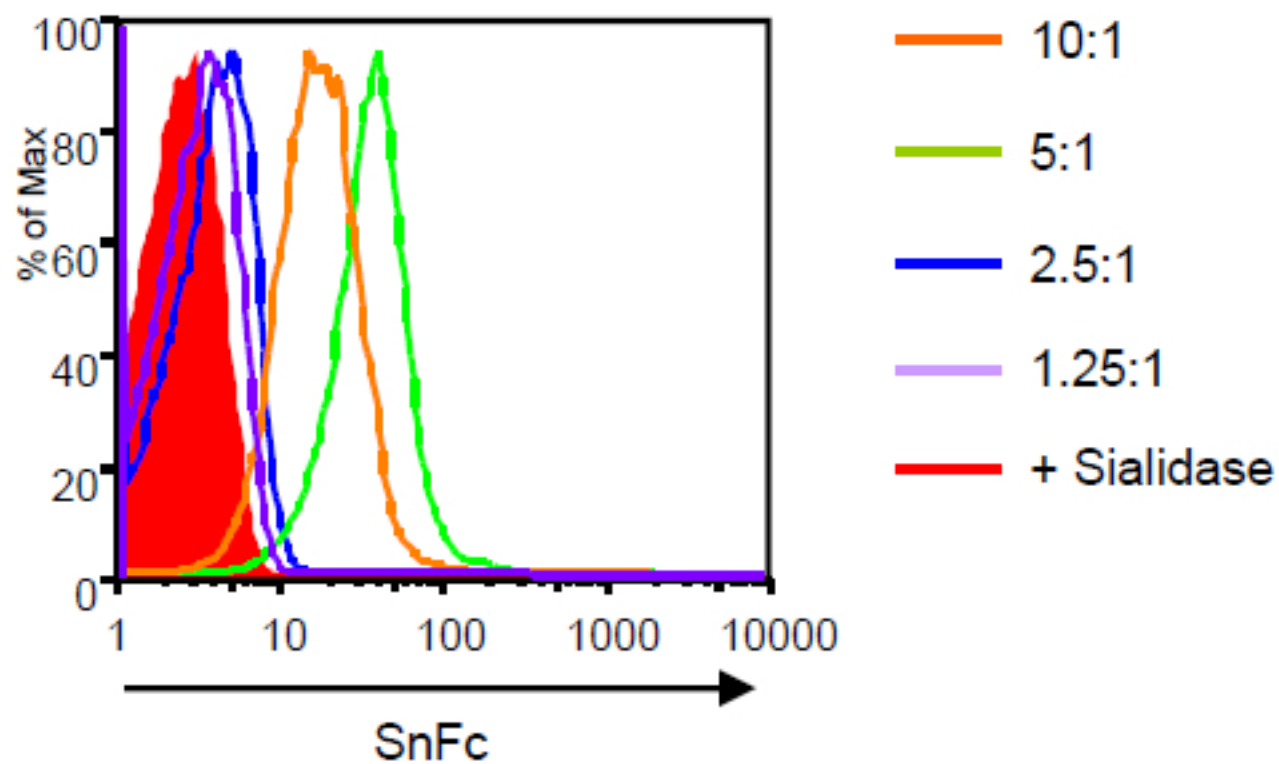


Figure S2

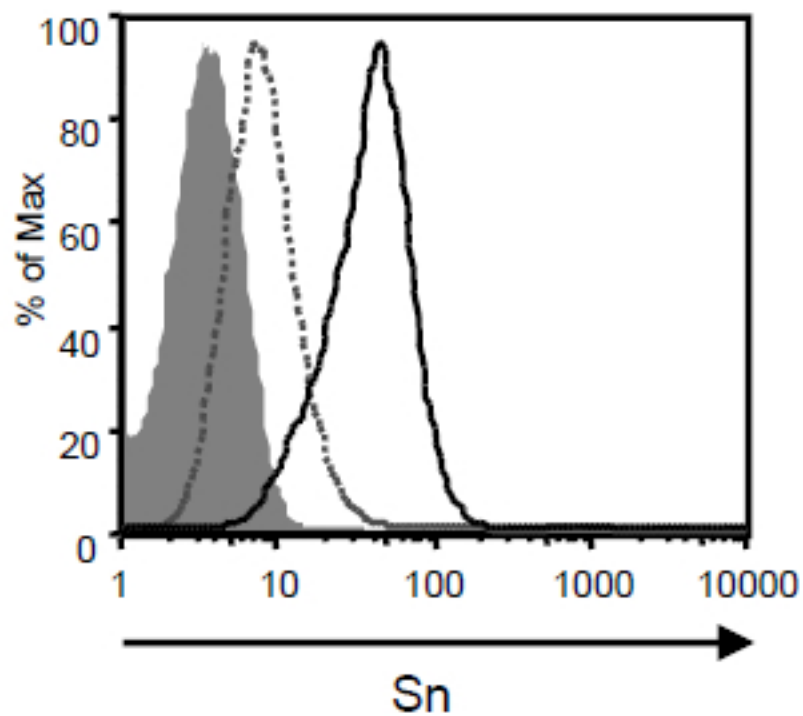


Figure S3

