

Supporting Information

Li et al. 10.1073/pnas.1300881110

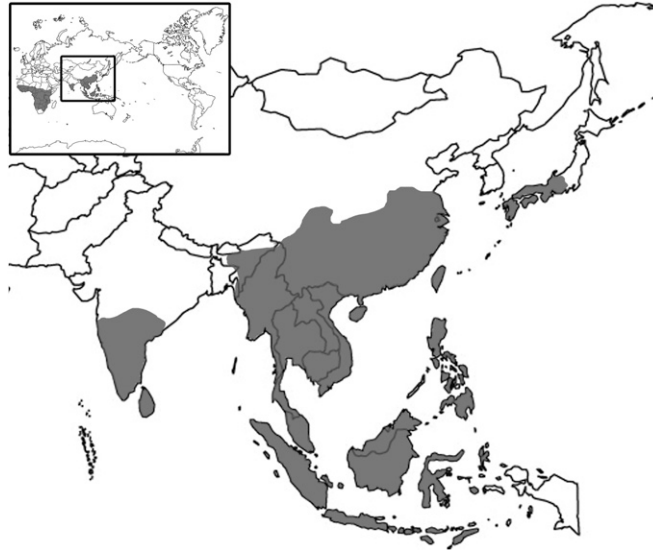


Fig. S1. Map with the current distribution of Rhacophoridae.

Table S1. Samples, with sampling site, museum voucher nos., and GenBank accession nos. of corresponding sequences

[Table S1](#)

Table S2. Divergence times in million years before present and biogeographic reconstructions for nodes

[Table S2](#)

Table S3. Comparison of different temporal dispersal models using Lagrange, indicating that dispersal between the Indian subcontinent and Eurasia most likely occurred after 35 Ma, but before 25 Ma

[Table S3](#)